

TRACT "L1"
DOC 2014-007314 P.C.R.
(NOT A PART)

APN 510-71-015E
GLENWILDE HOMEOWNERS
ASSOCIATION
ZONING: CR-3

LUCERA LN.

APN 510-71-015E
GLENWILDE HOMEOWNERS
ASSOCIATION
ZONING: CR-3

APN 512-42-7260
OUR LADY OF GRACE ROMAN CATHOLIC
PARISH-MARICOPA
ZONING: CR-3

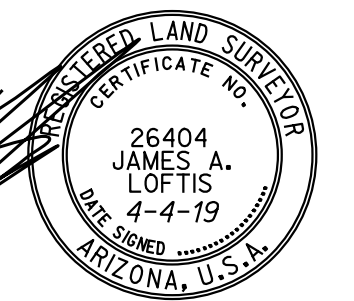
TRACT "D"
DOC 2016-044010 P.C.R.
(NOT A PART)

LOT 3
(NOT A PART)

SMITH FARMS PARCEL 7
FEE NO. 2005-067558
ZONING: CR-3

APN 512-39-627B
DESERT PASSAGE COMMUNITY
ASSOCIATION
ZONING: CR-3

APN 512-39-6280
KB HOME PHOENIX INC
ZONING: CR-3



SCALE: 1"= 50'
0' 25' 50' 100'

LEGEND:

●	BRASS CAP - AS NOTED	R/W	RIGHT-OF-WAY
○	FOUND/SET MONUMENT - AS NOTED	DKT.	DOCKET
—	SUBDIVISION BOUNDARY	DOC.	DOCUMENT
---	MONUMENT LINE	RLS	REGISTERED LAND SURVEYOR
---	EXISTING R/W LINE	A.P.N.	ASSESSOR PARCEL NUMBER
---	ADJACENT PARCEL LINE	(M)	MEASURED
---	EXISTING EASEMENT LINE	(R)	RECORD PER FEE NO. 2016-044010 P.C.R.
---	PROPOSED EASEMENT LINE	(R1)	RECORD PER FEE NO. 2009-117628 & 2011-093070 P.C.R.
---	TIE LINE	(C)	CALCULATED
P.C.R.	PINAL COUNTY RECORDER	FD.	FOUND
P.U.E.	PUBLIC UTILITY EASEMENT	W.E.	WATERLINE EASEMENT DEDICATED PER THIS PLAT
V.N.A.E.	VEHICULAR NO ACCESS EASEMENT	W.S.E.	WATERLINE AND SEWER LINE EASEMENT DEDICATED PER THIS PLAT

SMITH FARMS PARCEL 1
PLAT MAP CABINET F, SLIDE 080
ZONING: CR-3

CURVE	DELTA	RADIUS	LENGTH	BEARING	DISTANCE
C1	34°41'26"	25.00'	15.14'	N50°09'15"W	14.91'

LINE	BEARING	DISTANCE
L1	S00°00'15"E	16.00'
L2	N90°00'00"W	112.56'
L3	N00°00'00"W	16.00'
L4	N90°00'00"E	112.56'
L5	N90°00'00"W	242.00'
L6	S00°00'00"E	6.76'
L7	N90°00'00"E	6.00'
L8	N00°00'00"W	6.76'
L9	N90°00'00"W	418.00'
L10	S00°00'00"E	21.67'
L11	N90°00'00"E	17.13'
L12	S00°00'00"E	6.00'
L13	N90°00'00"W	17.13'
L14	S00°00'00"E	108.31'
L15	N90°00'00"W	81.46'
L16	N22°30'29"E	36.28'
L17	S63°53'16"E	36.81'
L18	N00°00'00"W	9.63'
L19	N90°00'00"E	16.00'
L20	S00°00'00"E	11.49'

LINE	BEARING	DISTANCE
L21	N90°00'00"E	4.96'
L22	N00°00'00"W	135.98'
L23	N90°00'00"E	229.61'
L24	N00°00'00"W	9.50'
L25	N90°00'00"E	16.00'
L26	S00°00'00"E	9.50'
L27	N90°00'00"E	373.74'
L28	N00°00'00"W	10.23'
L29	N90°00'00"E	16.00'
L30	S00°00'00"E	10.23'
L31	N90°00'00"E	55.65'
L32	S00°00'00"E	25.00'
L33	S00°00'00"E	63.58'
L34	N90°00'00"E	21.50'
L35	S00°00'00"E	16.00'
L36	N90°00'00"W	21.50'
L37	S00°00'00"E	338.00'
L38	N90°00'00"W	394.00'
L39	N00°00'00"W	281.60'
L40	N90°00'00"E	16.00'

LINE	BEARING	DISTANCE
L41	S00°00'00"E	196.77'
L42	N90°00'00"E	6.75'
L43	S00°00'00"E	6.00'
L44	N90°00'00"W	6.75'
L45	S00°00'00"E	24.83'
L46	N90°00'00"E	10.50'
L47	S00°00'00"E	16.00'
L48	N90°00'00"W	10.50'
L49	S00°00'00"E	22.00'
L50	N00°00'00"E	197.50'
L51	N00°00'00"W	9.50'
L52	N90°00'00"E	16.00'
L53	S00°00'00"E	9.50'
L54	N90°00'00"E	149.50'
L55	N00°00'00"W	22.00'
L56	N90°00'00"W	20.50'
L57	N00°00'00"W	16.00'
L58	N90°00'00"E	20.50'
L59	N00°00'00"W	28.32'
L60	N90°00'00"W	16.75'

LINE	BEARING	DISTANCE
L61	N00°00'00"W	6.00'
L62	N90°00'00"E	16.75'
L63	N00°00'00"W	329.26'
L64	N90°00'00"E	16.00'

SW COR. SEC. 25
HOLE IN CONC.
(MONUMENT MISSING)

FINAL PLAT
FOR
HERITAGE CHARTER SCHOOL

3eengineering
planning civil engineering surveying

3 ENGINEERING, LLC
6370 E THOMAS ROAD
SUITE # 200
SCOTTSDALE, ARIZONA 85251
PHONE: (480) 334-4387
FAX: (480) 493-3230
WWW.3ENGINEERING.COM

DRAWN BY: R. HANNEN

PROJECT NO.
1692

DATE: 04/04/19

SHEET NO.
FP02
2 of 2