



**Area Transportation Plan  
Implementation Support –  
Access Management  
(Presented To Council  
On February 5, 2019)**

**City Council Regular Meeting**  
February 19, 2019



# Overview

- Purpose
- Process
- Findings
- Ongoing efforts
- Next Steps



# Access Management - Purpose

- Provide guidance for the connectivity of collector and local facilities to the arterial and parkway facilities identified in the ATP
- Develop Access Management Guidelines for use by City staff
- Initial efforts focus on incorporated area for proof of concept before expanding to entire planning area



# Access Management - Process

- Draft Citywide access management guidance
  - Frequency of access
  - Access spacing
  - Traffic control
- Area specific guidance
  - Definition and categorization of area type by level of existing development
  - MAG buildout modeling to determine anticipated trip activity
  - Correlation of resulting forecasted trip levels by TAZ to number of required collector facilities
  - Comparison of forecasted collector volumes to MUTCD traffic signal warrants

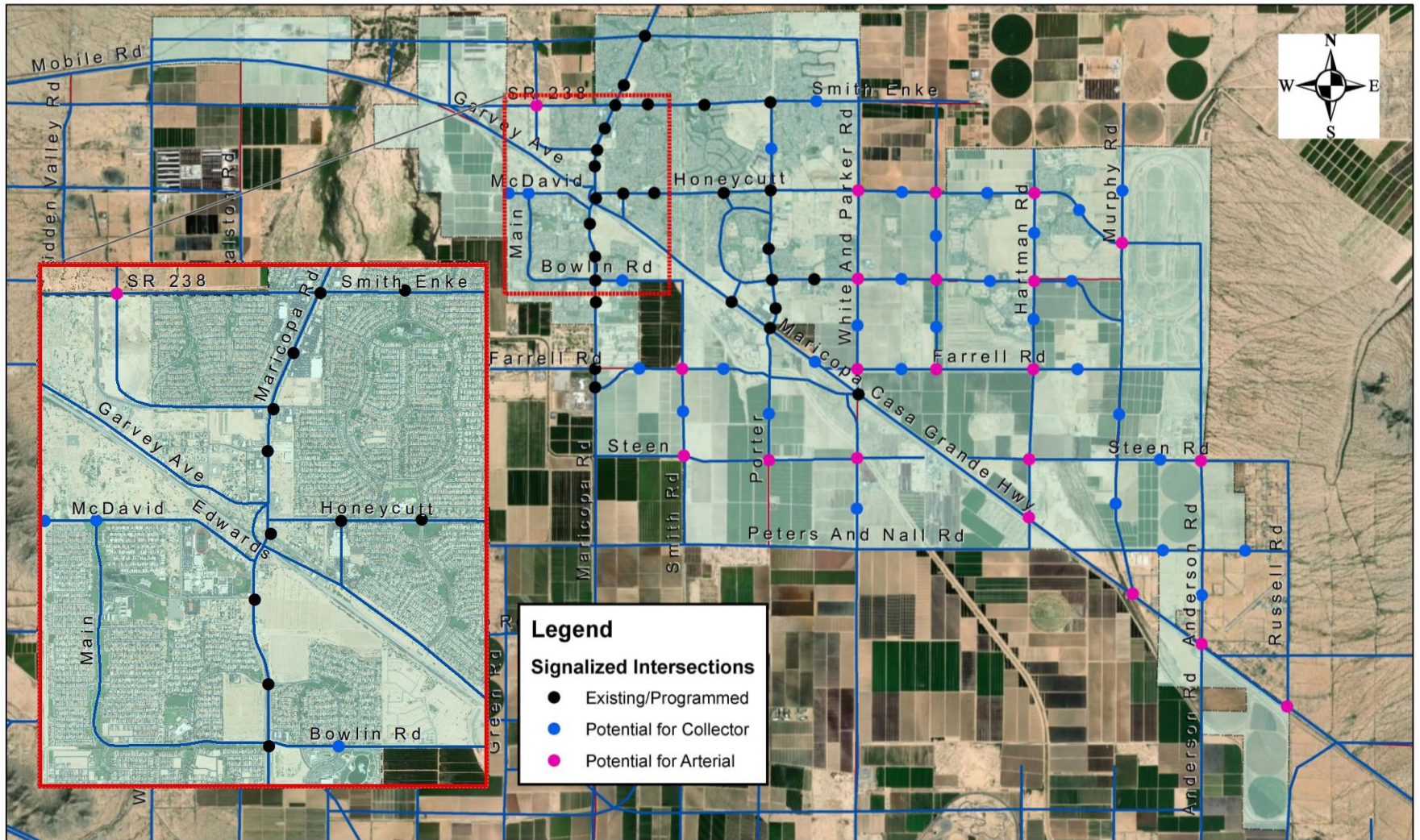


# Access Management - Findings

- Remaining development in the incorporated area can be adequately served by collector facilities with spacing of no less than  $\frac{1}{4}$  mile (consistent with access management guidelines)
- Anticipated need for traffic signals at only  $\frac{1}{2}$  mile and mile intersections – **with few exceptions** (consistent with access management guidelines)



# Access Management - Findings



# Access Management – Ongoing Efforts

- Support for specific character area outreach by City staff
- Coordination with concurrent City effort to update Design Guidelines, with specific focus on Traffic Impact Analysis requirements



# Contact Information

David R. Maestas, MPA  
Transportation Policy Manager

Tel: 520-316-6948  
David.maestas@maricopa-az.gov