



February 5, 2018
Revised May 9, 2018

Mr. Ross Renner
City of Maricopa Public Works
CIP Project Manager
39700 W. Civic Center Plaza
Maricopa, AZ 85138
Ross.renner@maricopa-az.gov

SUBJECT: Edison Road – Warranty and Additional Drainage Improvements

Following are three proposals to mitigate drainage scour and improve high volume drainage flows at three locations along Edison/Loma Roads. **The City's total cost participation shall be \$13,873.32** as detailed in the pricing tables below.

BASIN NO. 1 TO PIPED CULVERT INLET (EXHIBIT A): The City's cost participation is \$0.00. Achen-Gardner and EPS Group will share the cost.

Item	Description	Quantity	Units	Unit Price	Bid Total
BASIN NO. 1 TO PIPED CULVERT INLET (EXHIBIT A)					
01	MOBILIZATION	1.00	LS	\$1,005.00	\$1,005.00
02	RIP RAP	61.25	TN	\$35.00	\$2,143.75
03	FILTER FABRIC	1.00	LS	\$240.00	\$240.00
04	EXCAVATION, GRADING, INSTALL RIP RAP & FILTER FABRIC	1.00	LS	\$10,432.00	\$10,432.00
					\$-
	SUBTOTAL				\$13,820.75
	Overhead (7.5%) and Profit (2.5%)		%	10%	\$ 1,382.08
	Insurance (1.75%)		%	1.75%	\$ 266.05
	Bond (1.0%)		%	1.00%	\$ 154.69
	Sales Tax (6.63%)		%	6.63%	\$ 1,035.84
	TOTAL				\$ 16,659.41

BASIN NO. 5 MDWID SPILLWAY BASIN: Includes approximately 80 feet of ditch behind walk, installing a 12' wide x 4' deep cut-off wall at the top of the basin, 28' x 12' wide rip rap spillway, 12' wide x 2' deep cut-off wall at the bottom of the slope in the basin. **The City's cost participation is \$12,029.80.**

Item	Description	Quantity	Units	Unit Price	Bid Total
BASIN NO. 5 (MDWID SPILLWAY BASIN)					
01	MOBILIZATION	1.00	LS	\$1,005.00	\$1,005.00
02	ADOT CLASS S 3000	5.00	CY	\$100.00	\$500.00
03	RIP RAP	40.00	TN	\$35.00	\$1,400.00
04	FILTER FABRIC	1.00	LS	\$120.00	\$120.00
05	EXCAVATION, GRADING, INSTALL RIP RAP & FILTER FABRIC	1.00	LS	\$6,955.00	\$6,955.00
					\$-
	SUBTOTAL				\$9,980.00
	Overhead (7.5%) and Profit (2.5%)		%	10%	\$ 998.00
	Insurance (1.75%)		%	1.75%	\$ 192.12
	Bond (1.0%)		%	1.00%	\$ 111.70
	Sales Tax (6.63%)		%	6.63%	\$ 747.98
	TOTAL				\$ 12,029.80

BOX CULVERT INLET (WARRANTY & ADDITIONAL TURNDOWN (EXHIBIT B): The City's cost participation shall be **\$1,843.52**. Achen-Gardner's subcontractor is performing the warranty work for repair of the initial 2' depth based on the contract unit pricing. The City requested additional 2' depth of rip/rap includes the additional excavation and labor, equipment, and materials to place the additional material from the 2' depth to the 4' overall depth.

Item	Description	Quantity	Units	Unit Price	Bid Total
BOX CULVERT INLET (WARRANTY & ADDITIONAL TURNDOWN) (EXHIBIT B)					
01	SUBCONTRACTOR MOBILIZATION	1.00	LS	\$300.00	\$300.00
02	SUBCONTRACTOR WARRANTY CREDIT (MOBILIZATION)	1.00	LS	\$(150.00)	\$(150.00)
03	SUBCONTRACTOR GROUTED RIP RAP 4' DEPTH	360.00	CY	\$10.96	\$3,945.60
04	SUBCONTRACTOR WARRANTY CREDIT 2' GROUTED RIP RAP	180.00	CY	\$(5.76)	\$(1,036.80)
					\$-
	Subtotal				\$3,058.80
	Overhead (7.5%) and Profit (2.5%)		%	10%	\$ 305.88
	Insurance (1.75%)		%	1.75%	\$ 58.88
	Bond (1.0%)		%	1.00%	\$ 34.24
	Sales Tax (6.63%)		%	6.63%	\$ 229.25
	TOTAL				\$ 3,687.05

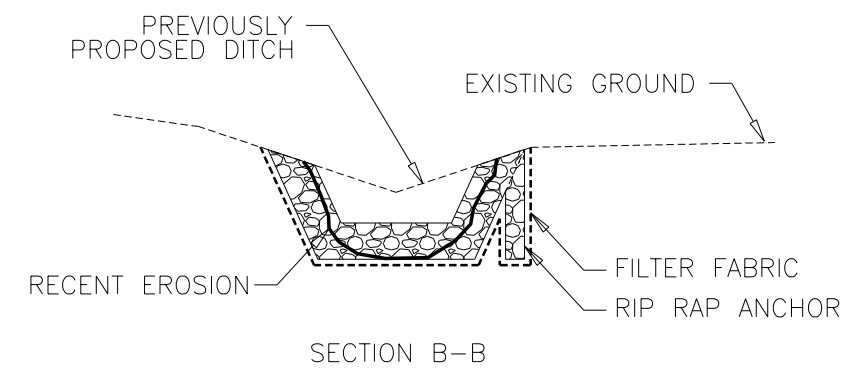
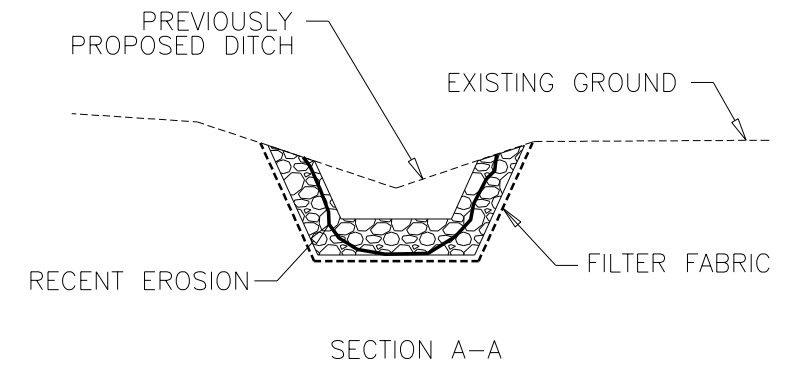
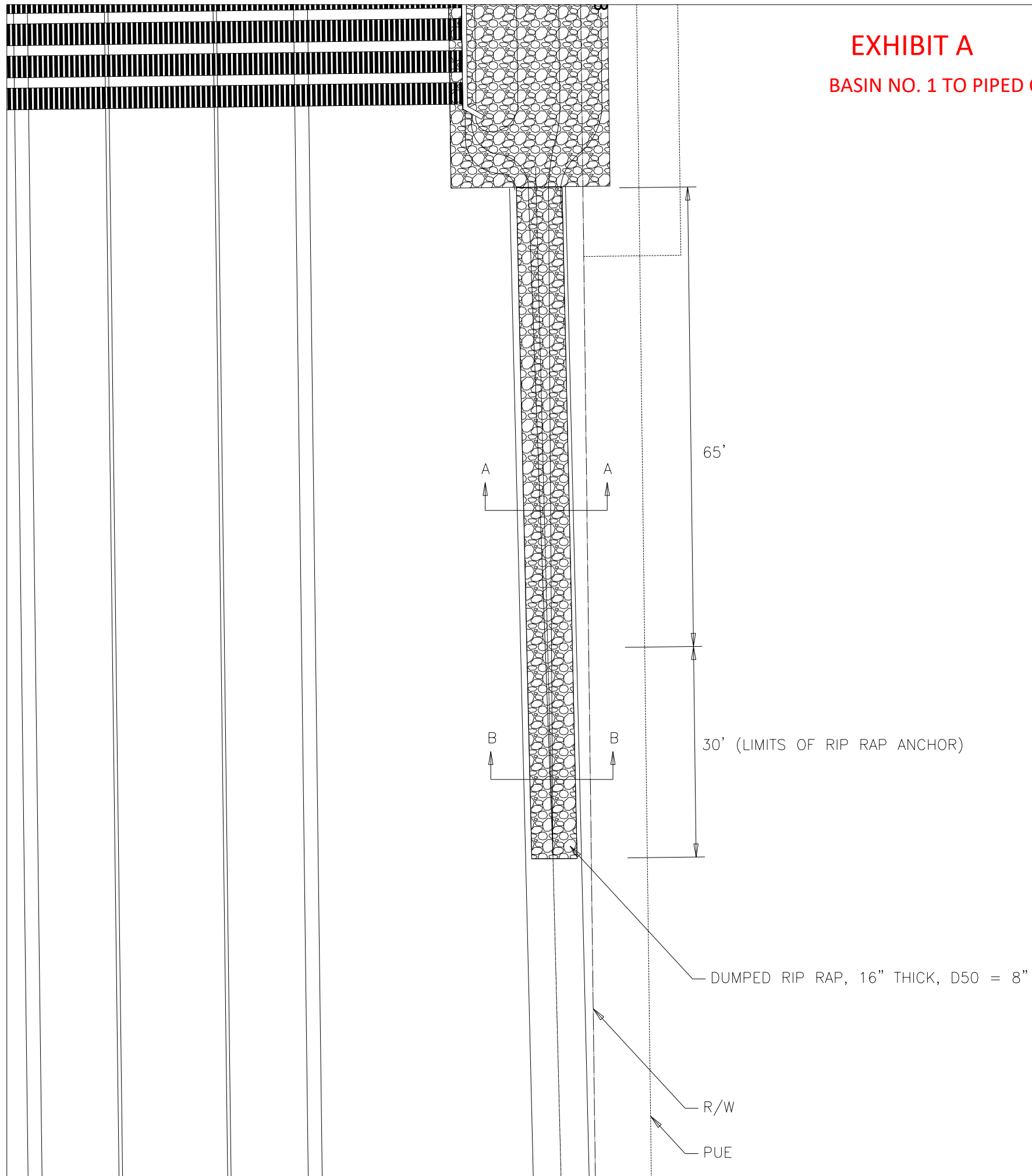
Should you have any questions and/or comments, please feel free to contact me at (480) 403-9398 or e-mail chall@achen.com.

Sincerely;

ACHEN-GARDNER CONSTRUCTION, LLC

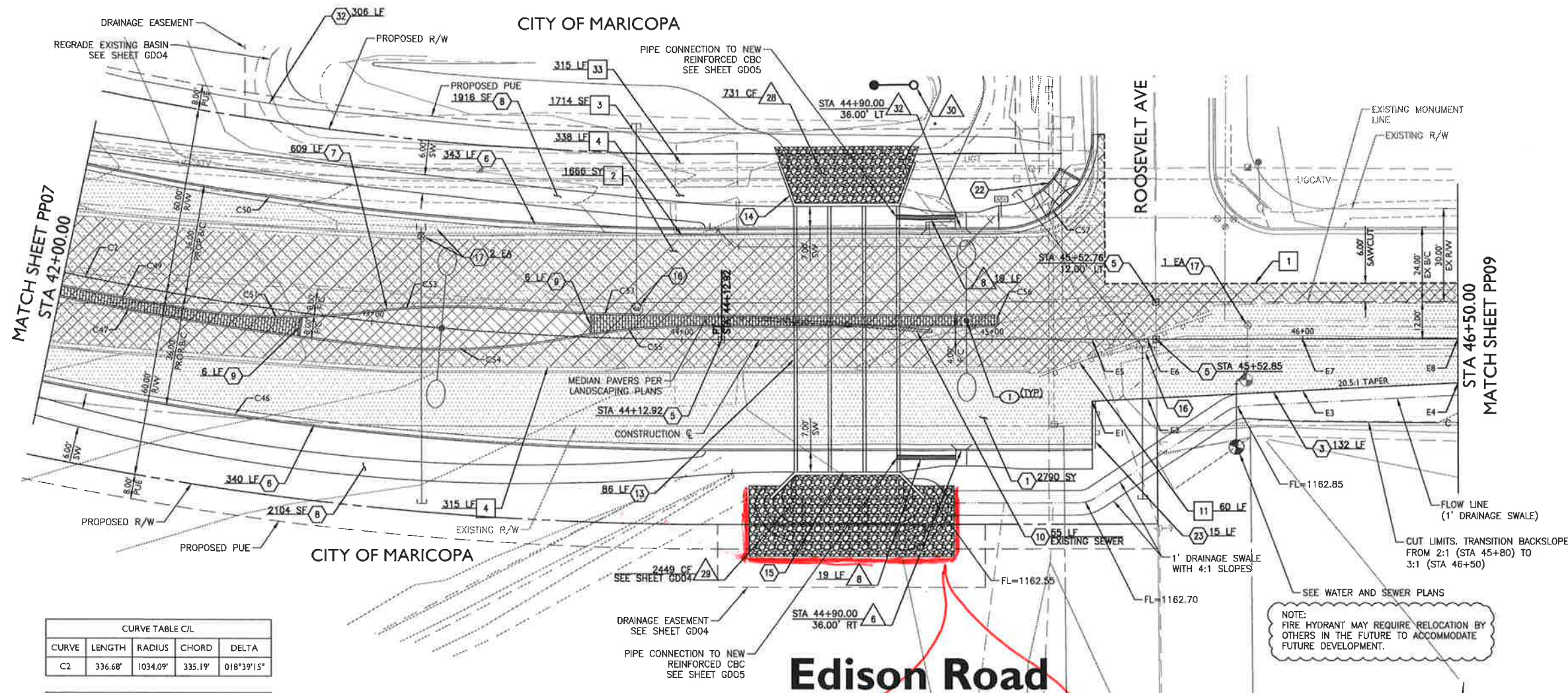
Christie Hall, Project Manager
Attachments

EXHIBIT A
BASIN NO. 1 TO PIPED CULVERT INLET



APPROXIMATE QUANTITIES:	
DUMPED RIP RAP:	35 CY
FILTER FABRIC:	86 SY

EXHIBIT B



CURVE TABLE C/L				
CURVE	LENGTH	RADIUS	CHORD	DELTA
C2	336.68'	1034.09'	335.19'	018°39'15"

CURVE TABLE B/C				
CURVE	LENGTH	RADIUS	CHORD	DELTA
C46	289.50'	1069.60'	288.62'	015°30'29"
C47	162.54'	1041.57'	162.37'	008°56'27"
C49	98.00'	1038.59'	97.96'	005°24'23"
C50	273.55'	998.40'	272.69'	015°41'53"
C51	61.98'	207.56'	61.75'	017°06'33"
C52	41.08'	216.96'	41.02'	010°44'56"
C53	72.61'	1039.81'	72.60'	004°00'04"
C54	61.90'	211.33'	61.68'	016°46'59"
C55	43.31'	211.33'	43.24'	011°44'33"
C56	4.71'	1.50'	3.00'	180°00'00"
C57	47.34'	30.00'	42.58'	090°25'11"

POINT TABLE				
POINT	STATION	OFFSET	ELEVATION	DESCRIPTION
E1	45+32.22	20.00' R	1163.75	EOP, BEGIN TAPER
E2	45+50.00	19.13' R	1163.82	EOP
E3	46+00.00	16.69' R	1163.88	EOP
E4	46+50.00	14.25' R	1164.00	EOP
E5	45+32.22	0.00' R	1164.15	C/L
E6	45+50.00	0.00' R	1164.20	C/L
E7	46+00.00	0.00' R	1164.21	C/L
E8	46+50.00	0.00' R	1164.28	C/L

Edison Road

Additional work:
+ 2 feet (depth) to
turndown x 12" wide

Warranty: Install
2' turndown per plan
sheet 32 (GDO4) (12" wide)
Fill voids with
concrete

ROADWAY CONSTRUCTION NOTES		
1	Prepare Subgrade and install 6.5" AC Pavement over 7" ABC per Structural Section #1	2790 SY
3	Thickened Edge of Pavement per MAG Detail 201 Type "A"	132 LF
5	Survey Marker (MAG Detail 120 Type "A")	3 EA
6	6" Vertical Curb and Gutter per MAG Detail 220-1, Type "A"	683 LF
7	6" Single Curb per MAG Detail 222, Type "A"	809 LF
8	Sidewalk per MAG Detail 230 (6')	4020 SF
9	Median Concrete Band. See Landscape Plans	12 LF
10	Concrete Encasement per MAG Detail 404	55 LF
13	Triple Barrel Box Culvert (10' X 3') per Sheets DT04 and GDO4	86 LF
14	Outlet Wingalls and Modified Concrete Headwall per Sheet DT05	1 EA
Structures shall include Safety Roll per MAG Detail 145 (Type 1 Post Installation)		
15	Inlet Wingalls and Modified Concrete Headwall per Sheet DT05	1 EA
Structures shall include Safety Roll per MAG Detail 145 (Type 1 Post Installation)		
18	Adjust Manhole to Grade per MAG Detail 422	2 EA
17	Adjust Valve Box and Cover to Grade per MAG Detail 391-1 Type "c"	3 EA
22	Sidewalk Ramp per MAG Detail 235-2 (Modified) with Detectable Warning per COM Requirements. See Sheet DT03.	1 EA
23	Barricade per MAG Detail 130 Type "A"	15 LF
32	Dry Utility Joint Trench and Conduits. See Detail Sheet DT03	306 LF

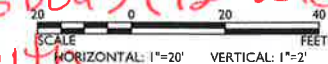
DRAINAGE CONSTRUCTION NOTES		
6	Curb Opening Catch Basin per MAG Detail 530	1 EA
8	15" RGRCP Class IV Storm Drain Pipe	19 LF
28	Grouted Riprap, 6"-8" Cobbles, 12" Thick	731 CF
29	Grouted Riprap, 6"-8" Cobbles, 18" Thick	2449 CF
30	Drywell per Detail Sheet DT03	1 EA
32	Catch Basin per City of Phoenix Detail P1589-1	1 EA
Wing Length = 10'		

REMOVAL NOTES		
1	Sawcut AC Pavement, Tack and Match Existing Pavement	NPI
2	Remove Pavement Section	1666 SY
3	Remove Concrete (Sidewalk, Driveway, Apron)	1714 SF
4	Remove Concrete Curb and Gutter	853 LF
11	Remove Barricade	60 LF
33	Remove Existing Duct Bank (After Proposed Duct Bank has been installed and energized) per Plans by ED3.	315 LF
Maintain Existing Electrical Service to Fire Station and Public Works Facility		

ELECTRICAL NOTES		
1	Proposed Streetlight - See Plans by Wright Engineering	

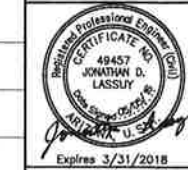
PAVEMENT LEGEND

	6.5" AC PAVEMENT ON 7" ABC
	REMOVE PAVEMENT SECTION



ADDENDUM 1: 05/05/2016

SEE SHEET PP08A AND POINT TABLE FOR ROADWAY PROFILE



CITY OF MARICOPA



EDISON ROAD INDUSTRIAL PARK

PLAN & PROFILE SHEET