

MARICOPA MUNICIPAL COURT

project consultants

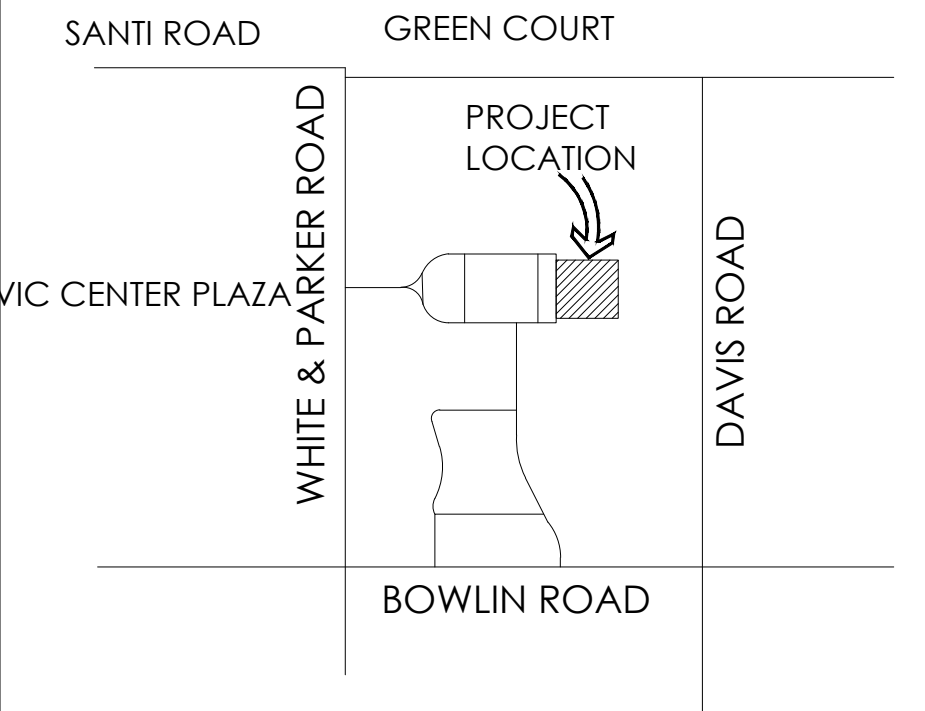
architecture:	landscape architecture:
DFDG 4545 E MCKINLEY ST PHOENIX, ARIZONA 85008 CONTACT: BYRON CLINE PHONE: 602.954.9060 EMAIL: bcline@dfdg.com	DESIGN ETHIC, LLC 7525 EAST 6TH AVENUE SCOTTSDALE, ARIZONA 85251 PROJECT CONTACT: BRANDON PAUL PHONE: 480.225.7077 EMAIL: bpaul@designethic.net
civil engineering:	
KBELL ENGINEERING, LLC 1355 NORTH 86TH PLACE MESA, ARIZONA 85207 CONTACT: KELLY BELL PHONE: 602.980.8246 EMAIL: kbell@kbelleng.com	

city of maricopa maintenance notes

1. INDIVIDUAL PROPERTY OWNERS, AND/OR PROPERTY OWNERS ASSOCIATION SHALL PROPERLY MAINTAIN ALL LANDSCAPE MATERIALS AND LANDSCAPED AREAS, INCLUDING THAT WITHIN THE PUBLIC RIGHTS-OF-WAY ADJACENT TO THE DEVELOPMENT, IN ACCORDANCE WITH THE APPROVED LANDSCAPE PLAN, EXCEPT IN AND ALONG PUBLIC RIGHTS-OF-WAYAND EASEMENTS WHERE THE CITY OF MARICOPA HAS AGREED TO PROVIDE MAINTENANCE PER SUBDIVISION ORDINANCE, SEC. 14-6-5.
2. REPLACEMENT OF DEAD TREES ALONG ARTERIAL AND COLLECTOR STREETS SHALL BE BY THE INDIVIDUAL PROPERTY OWNERS OR THE HOMEOWNERS ASSOCIATION AND SHALL BE COMPLETED WITHIN THREE (3) MONTHS FROM THE DATE THAT THE ASSOCIATION OR PROPERTY OWNER IS NOTIFIED BY THE CITY.PER SUBDIVISION ORDINANCE, SEC.14-6-5

sheet index

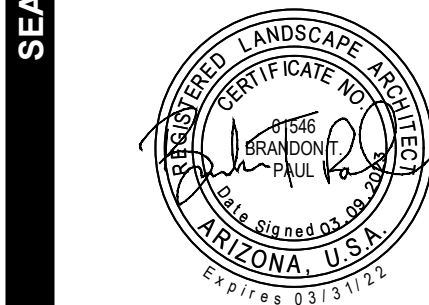
SHEET	TITLE
L0.01	COVER SHEET & NOTES
L2.01	PLANTING PLAN



vicinity map



DFDG
Architecture
4545 E. McKinley St. Phoenix, AZ 85008
602.954.9060 www.dfdg.com



Owner
City of Maricopa

Contractor
Caliente Construction Inc.

Architect
DFDG Architecture

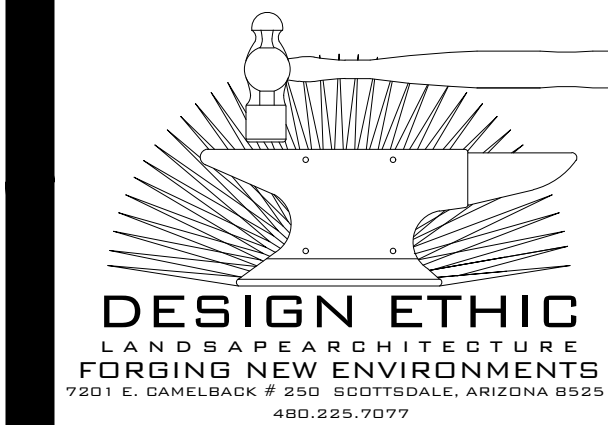
Structural Engineer
CTS Structural Engineers

MPE Engineer
Energy Systems Design ,Inc (ESD)
Civil Engineer
KBel Engineering LLC

Landscape Architect
Design Ethic

DOCUMENT COPYRIGHT 2022
ISSUE
SITE PLAN SUBMITTAL - 03.09.2023

REVISIONS

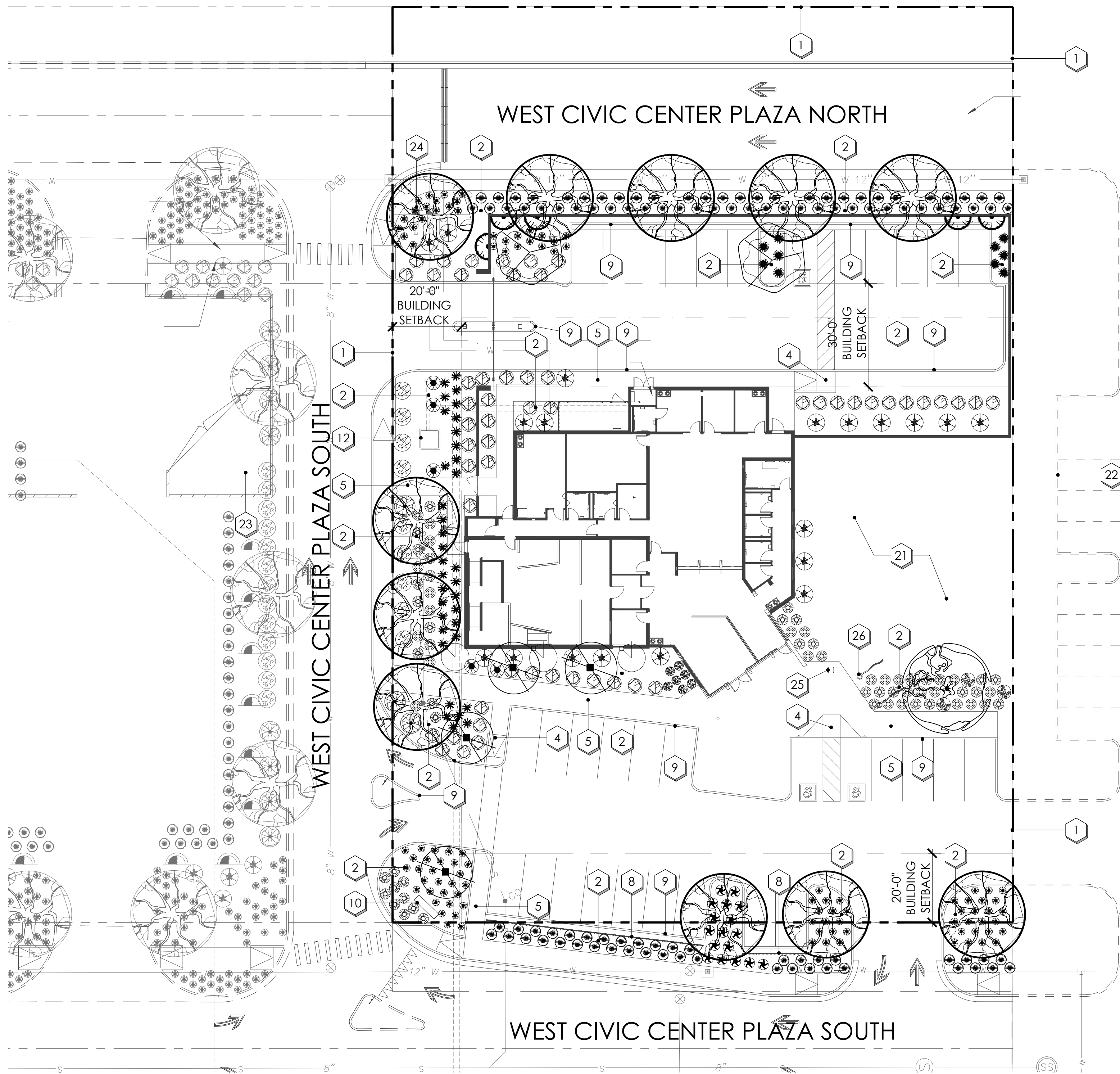


Maricopa Municipal Court

COVER SHEET & NOTES

L0.01
1 OF 2

39600 West Civic Center Plaza
Maricopa, AZ 85138
22-032
DESIGN ETHIC PROJECT NUMBER



planting key notes

- 1

PROPERTY LINE / RIGHT OF WAY LINE
- 2

DECOMPOSED GRANITE IN ALL PLANTING AREAS
- 3

SIGHT VISIBILITY TRIANGLE, MAXIMUM MATURE PLANT MATERIAL HEIGHT IN THE SIGHT VISIBILITY TRIANGLES IS 24 INCHES
- 4

ACCESSIBLE RAMP. SEE CIVIL ENG. PLANS.
- 5

(VERIFY WIDTH) SIDEWALK.
- 6

FIRE HYDRANT -3'-0" CLEAR OF ALL PLANT MATERIAL
- 7

FIRE LINE BACKFLOW PREVENTOR - SCREEN MAINTAIN 3' ACCESS & CLEARANCE PER MAG STANDARD DETAIL 362.
- 8

(VERIFY HEIGHT) SCREEN WALL. SEE ARCH. PLANS.
- 9

CURB. SEE CIVIL ENG. PLANS.
- 10

MONUMENT SIGN. SEE ARCH. PLANS.
- 11

SITE LIGHTING. SEE ARCH. PLANS.
- 12

PROPOSED TRANSFORMER LOCATION. MAINTAIN 3' ACCESS & CLEARANCE AROUND ALL EDGES. ALLOW FOR 12' CLEAR OPERATIONAL AREA IMMEDIATELY IN FRONT OF TRANSFORMER.
- 13

STORMWATER RETENTION. SEE CIVIL ENG. PLANS.
- 14

DRAINAGE STRUCTURE. SEE CIVIL ENG. PLANS.
- 15

RIP RAP. SEE CIVIL ENG. PLANS.
- 16

LANDSCAPE WATER METER.
- 17

CONCRETE HEADER. SEE SHEET L, DETAIL.
- 18

EXISTING POWER POLE.
- 19

OVER HEAD ELECTRIC LINE(O.H.E.).
- 20

P.U.E. SEE CIVIL ENG. PLANS.
- 21

FUTURE BUILDING PAD. DG FOR DUST CONTROL. INSTALL DECOMPOSED GRANITE FOR DUST CONTROL.
- 22

FUTURE DEVELOPMENT. INSTALL DECOMPOSED GRANITE FOR DUST CONTROL.
- 23

EXISTING TRASH ENCLOSURE. SEE ARCHITECT'S SITE PLAN.
- 24

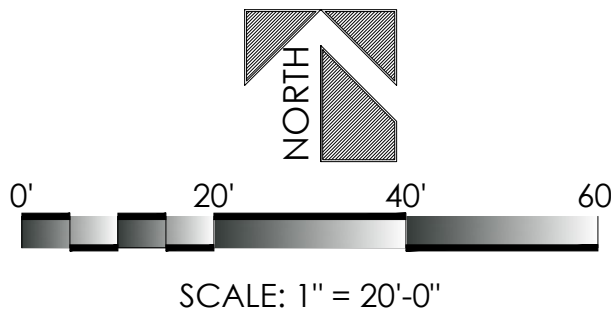
LANDSCAPE WATER METER.
- 25

BIKE RACK, SEE ARCH. PLANS.
- 26

FLAG POLES. SEE ARCH. PLANS.

plant legend

botanical name common name	emitters	size	qty	comments
trees				
CHILOPSIS LINEARIS 'LUCRETIA HAMILTON' DESERT WILLOW	(6 @ 1.0 GPH)	24" BOX	4	5.0H., 3.0W., 1.0CAL. STAKE IN PLACE
OLNEYA TESOTA IRONWOOD	(5 @ 1.0 GPH)	36" BOX	1	H., W., CAL. STAKE IN PLACE
PARKINSONIA PRAECOX PALO BREA	(5 @ 1.0 GPH)	24" BOX	2	5.0H., 3.0W., 1.0CAL. STAKE IN PLACE
PROSOPIS CHILENSIS 'THORNLESS'	(5 @ 1.0 GPH)	24" BOX	11	5.0H., 6.0W., 1.25CAL. STAKE IN PLACE
shrubs				
CALLIANDRA ERIOPHYLLA PINK FAIRY DUSTER	(1 @ 1.0 GPH)	5 GAL.	5	PLANT AT 4' O.C.
JUSTICIA CALIFORNICA CHUPAROSA	(1 @ 1.0 GPH)	5 GAL.	54	PLANT AT 4' O.C.
RUELLIA BRITTONIANA MEXICAN PETUNIA	(1 @ 1.0 GPH)	5 GAL.	101	PLANT AT 4' O.C.
TECOMA STANS YELLOW BELLS	(1 @ 1.0 GPH)	5 GAL.	3	PLANT AT 7' O.C.
CAESALPINIA GILLIESII YELLOW BIRD OF PARADISE	(1 @ 1.0 GPH)	5 GAL.	3	PLANT AT 6' O.C.
accents				
ALOE BARBADENSIS ALOE VERA		5 GAL.	17	PLANT AT 4' O.C.
ASCLEPIAS SUBULATA DESERT MILKWEED		5 GAL.	35	PLANT AT 3' O.C.
CEREUS PERUVIANUS PERUVIAN CACTUS		5 GAL.	4	PLANT AT 3' O.C.
DASYLIRION QUADRANGULATUM MEXICAN GRASS TREE		5 GAL.	19	PLANT AT 5' O.C.
HESPERALOE PARVIFLORA RED YUCCA		5 GAL.	10	PLANT AT 3' O.C.
HESPERALOE PARVIFLORA 'PERPA' BRAKELIGHTS RED YUCCA		5 GAL.	100	PLANT AT 3' O.C.
NOLINA MICROCARPA BEAR GRASS		5 GAL.	9	PLANT AT 3' O.C.
PEDILANTHUS MACROCARPUS SLIPPER PLANT		5 GAL.	7	PLANT AT 3' O.C.
YUCCA RUPICOLA TWISTED LEAF YUCCA		5 GAL.	66	PLANT AT 5' O.C.
vines				
CAMPIS RADICANS TRUMPET VINE		5 GAL.	5	TRAIN TO WALL
inerts				
3/4" SCREENED DECOMPOSED GRANITE MATCH EXISTING		3/4" SCREENED	13,971 S.F.	2" MINIMUM IN ALL PLANTERS



Owner
City of Maricopa

Contractor
Caliente Construction Inc.

Architect
DFDG Architecture

Structural Engineer
CTS Structural Engineers

MPE Engineer
Energy Systems Design ,Inc
(ESD)

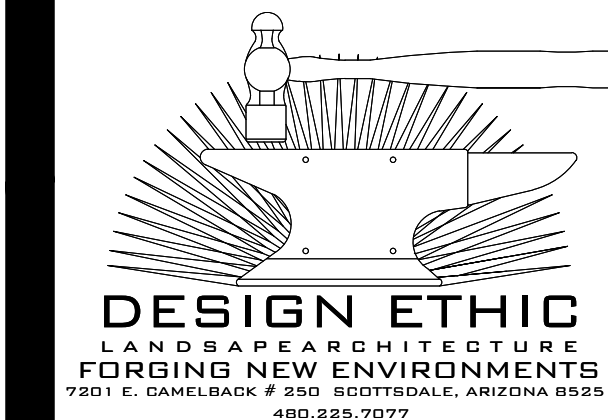
Civil Engineer
KBell Engineering LLC

Landscape Architect
Design Ethic

DOCUMENT COPYRIGHT 2022

ISSUE
SITE PLAN SUBMITTAL - 03.09.2023

REVISIONS



Maricopa Municipal Court

PLANTING PLAN