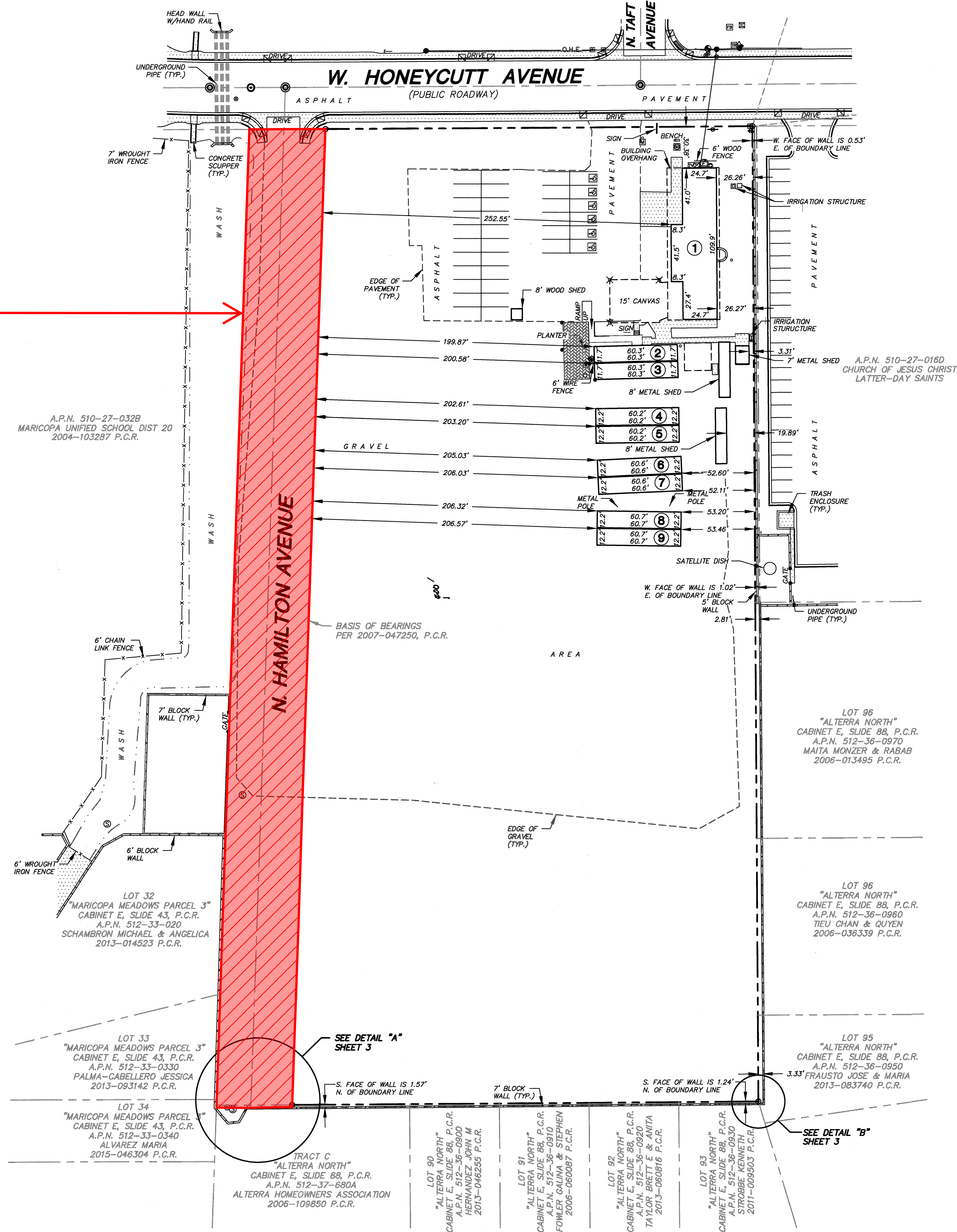
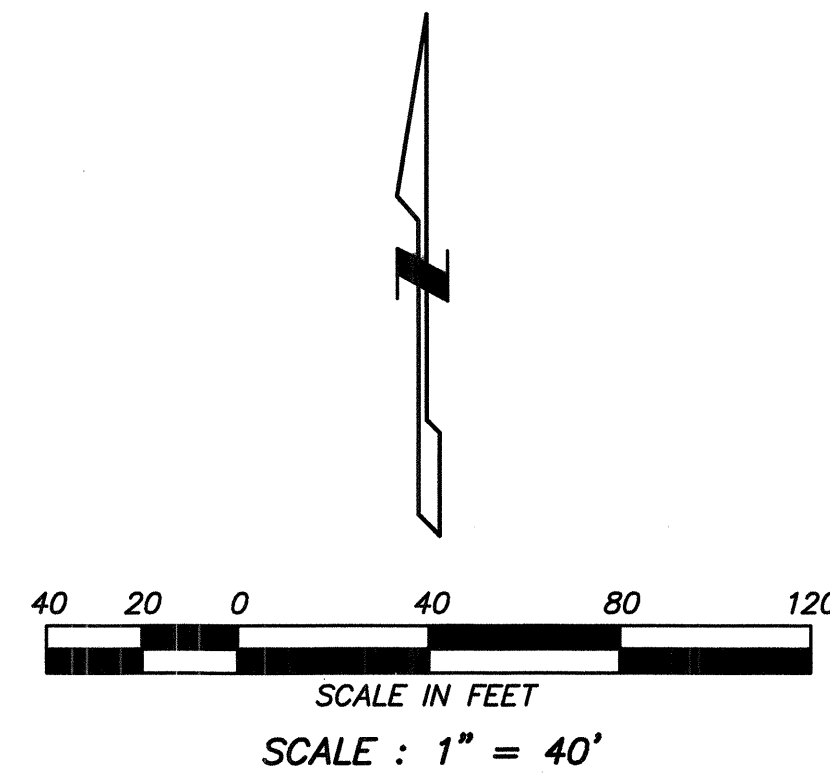


N. Hamilton Ave. Abandonment – Location Exhibit



Right of Way to be abandoned.



BUILDING TABLE 45295 W. HONEYCUTT AVENUE			
BUILDING	TYPE	HEIGHT	SQ. FEET
1	ONE STORY BRICK	14'±	3,057
2	ONE STORY WOOD	14'±	708
3	ONE STORY WOOD	14'±	727
4	ONE STORY WOOD	12'±	736
5	ONE STORY WOOD	12'±	736
6	ONE STORY WOOD	12'±	742
7	ONE STORY WOOD	12'±	742
8	ONE STORY WOOD	12'±	743
9	ONE STORY WOOD	12'±	743

- LEGEND**
- BOUNDARY LINE
 - CENTER LINE OR MONUMENT LINE
 - CONCRETE SURFACE
 - BRICK SURFACE
 - 24 INCH VERTICAL CURB & GUTTER
 - 6 INCH CONCRETE CURB
 - INDICATES DRIVEWAY (MEANS OF ACCESS)
 - WALL
 - FENCE
 - GATE
 - OVERHEAD ELECTRIC LINE
 - FOUND 1/2" CAPPED REBAR STAMPED 38001
 - FOUND 3" CITY OF MARICOPA BRASS CAP FLUSH
 - CALCULATED POSITION NO MONUMENT FOUND OR SET (UNLESS OTHERWISE NOTED)
 - SCHEDULE B ITEM
 - BACK FLOW PREVENTER
 - CABLE TELEVISION RISER
 - DOWN GUY
 - ELECTRIC BOX
 - ELECTRIC CABINET
 - ELECTRIC METER
 - ELECTRIC PANEL
 - FIBER OPTIC JUNCTION BOX
 - FIRE HYDRANT
 - FIRE ASSEMBLY
 - GAS MARKER
 - GUARD POST OR GATE POST
 - GAS VALVE
 - HANDICAPPED SPACE
 - LIGHT POLE
 - MAIL BOX
 - METAL COVER (RECTANGULAR)
 - POWER POLE
 - POWER POLE W/ UNDERGROUND ELECTRIC
 - SEWER CLEAN OUT
 - SEWER MANHOLE
 - SEWER MARKER
 - SPRINKLER HOOK-UP (FIRE DEPARTMENT)
 - STUB OUT
 - TELEPHONE RISER
 - WATER METER
 - WATER VALVE
 - ASSESSORS PARCEL NUMBER
 - PINAL COUNTY RECORDS
 - RIGHT OF WAY
 - BOOK
 - PAGE
 - (TYP.)
 - RECORD PER DESCRIPTION
 - MEASURED

NOTE: ALL LINE & CURVE TABLE AND BOUNDARY INFORMATION SEE SHEET NO. 3

