

CURVE TABLE					
CURVE	LENGTH	RADIUS	DELTA	CHORD	CHORD BRG
C1	5.03'	25.00'	11°32'13"	5.03'	S06°29'35"E
C2	39.27'	25.00'	90°00'00"	35.36'	N45°43'29"W
C3	39.27'	25.00'	90°00'00"	35.36'	N44°16'31"E
C4	39.27'	25.00'	90°00'00"	35.36'	S44°16'31"W
C5	39.27'	25.00'	90°00'00"	35.36'	N45°43'29"W
C6	16.65'	55.00'	17°20'29"	16.58'	S80°36'16"W
C7	16.65'	55.00'	17°20'29"	16.58'	N07°56'46"E
C8	39.27'	25.00'	90°00'00"	35.36'	S45°43'29"E
C9	119.69'	55.00'	124°40'58"	97.43'	S45°43'29"E
C10	39.27'	25.00'	90°00'00"	35.36'	S44°16'31"W
C11	39.27'	25.00'	90°00'00"	35.36'	S45°43'29"E
C12	39.27'	25.00'	90°00'00"	35.36'	N45°43'29"W
C13	39.27'	25.00'	90°00'00"	35.36'	N44°16'31"E
C14	16.65'	55.00'	17°20'30"	16.58'	S07°56'45"W
C15	16.65'	55.00'	17°20'29"	16.58'	N80°36'16"E
C16	39.27'	25.00'	90°00'00"	35.36'	N45°43'29"W
C17	119.69'	55.00'	124°40'58"	97.43'	N45°43'29"W
C18	39.27'	25.00'	90°00'00"	35.36'	S44°16'31"W
C19	16.65'	55.00'	17°20'30"	16.58'	S82°03'15"E
C20	16.65'	55.00'	17°20'29"	16.58'	N09°23'44"W
C21	119.69'	55.00'	124°40'58"	97.43'	S44°16'31"W

LOT AREA TABLE		
LOT #	AREA (SF)	AREA (AC)
743	4,600	0.1056
744	4,600	0.1056
745	4,600	0.1056
746	4,600	0.1056
747	4,600	0.1056
748	4,600	0.1056
749	4,600	0.1056
750	4,600	0.1056
751	4,576	0.1051
752	4,576	0.1051
753	4,565	0.1048
754	4,489	0.1031
755	4,576	0.1051
756	4,600	0.1056
757	4,600	0.1056
758	4,600	0.1056
759	4,600	0.1056
760	4,600	0.1056
761	4,600	0.1056
762	4,600	0.1056
763	4,600	0.1056
764	4,600	0.1056
765	4,600	0.1056
766	4,600	0.1056
767	4,600	0.1056

LOT AREA TABLE		
LOT #	AREA (SF)	AREA (AC)
768	4,600	0.1056
769	4,600	0.1056
770	4,600	0.1056
771	4,600	0.1056
772	4,600	0.1056
773	4,576	0.1051
774	4,576	0.1051
775	4,600	0.1056
776	4,600	0.1056
777	4,600	0.1056
778	4,600	0.1056
779	4,600	0.1056
780	4,600	0.1056
781	4,600	0.1056
782	4,600	0.1056
783	4,600	0.1056
784	4,600	0.1056
785	4,600	0.1056
786	4,600	0.1056
787	4,600	0.1056
788	4,600	0.1056
789	4,600	0.1056
790	4,600	0.1056
791	4,600	0.1056
792	4,576	0.1051

LOT AREA TABLE		
LOT #	AREA (SF)	AREA (AC)
793	4,576	0.1051
794	4,600	0.1056
795	4,600	0.1056
796	4,600	0.1056
797	4,600	0.1056
798	4,600	0.1056
799	4,600	0.1056
800	4,600	0.1056
801	4,600	0.1056
802	4,600	0.1056
803	4,600	0.1056
804	4,600	0.1056
805	4,600	0.1056
806	4,600	0.1056
807	4,600	0.1056
808	4,600	0.1056
809	4,600	0.1056
810	4,600	0.1056
811	4,576	0.1051
812	4,576	0.1051
813	4,600	0.1056
814	4,600	0.1056
815	4,600	0.1056
816	4,600	0.1056
817	4,600	0.1056

LOT AREA TABLE		
LOT #	AREA (SF)	AREA (AC)
818	4,600	0.1056
819	4,600	0.1056
820	4,600	0.1056
821	4,600	0.1056
822	4,600	0.1056
823	4,600	0.1056
824	4,600	0.1056
825	4,600	0.1056
826	4,600	0.1056
827	4,600	0.1056
828	4,600	0.1056
829	4,600	0.1056
830	4,576	0.1051
831	4,620	0.1061
832	4,501	0.1033
833	4,600	0.1056
834	4,600	0.1056
835	4,600	0.1056
836	4,600	0.1056
837	4,600	0.1056
838	4,600	0.1056
839	4,600	0.1056
840	4,600	0.1056
841	4,600	0.1056
842	4,600	0.1056

LOT AREA TABLE		
LOT #	AREA (SF)	AREA (AC)
843	4,600	0.1056
844	4,486	0.1030
845	4,663	0.1070
846	4,477	0.1028
847	4,542	0.1043
848	4,600	0.1056
849	4,600	0.1056
850	4,600	0.1056
851	4,600	0.1056
852	4,600	0.1056
853	4,600	0.1056
854	4,600	0.1056
855	4,600	0.1056
856	4,600	0.1056
857	4,600	0.1056
858	4,600	0.1056
859	4,600	0.1056
860	4,600	0.1056
861	4,600	0.1056
862	4,600	0.1056
863	4,600	0.1056
864	4,600	0.1056
865	4,583	0.1052
866	6,335	0.1454
867	11,636	0.2671

LOT AREA TABLE		
LOT #	AREA (SF)	AREA (AC)
868	8,467	0.1944
869	4,514	0.1036
870	4,600	0.1056
871	4,600	0.1056
872	4,600	0.1056
873	4,600	0.1056
874	4,600	0.1056
875	4,600	0.1056
876	4,600	0.1056
877	4,600	0.1056
878	4,600	0.1056
879	4,600	0.1056
880	4,619	0.1060
881	4,600	0.1056
882	4,600	0.1056
883	4,599	0.1056

LINE TABLE		
LINE	BEARING	LENGTH
L1	S89°16'31"W	165.00'
L2	S00°43'29"E	75.56'
L3	N00°43'29"W	45.24'
L4	N48°19'44"E	11.20'
L5	N47°43'46"W	13.36'
L6	N31°01'59"W	14.50'

LEGAL DESCRIPTION

A PORTION OF THE WEST HALF OF SECTION 20, TOWNSHIP 4 SOUTH, RANGE 3 EAST, OF THE GILA AND SALT RIVER MERIDIAN, PINAL COUNTY, ARIZONA, MORE PARTICULARLY DESCRIBED AS FOLLOWS:

BEGINNING AT A GLO BRASS CAP AT THE WEST QUARTER CORNER OF SAID SECTION 20, FROM WHICH A GLO BRASS CAP AT THE NORTHWEST CORNER OF SAID SECTION 20, BEARS NORTH 00 DEGREES 41 MINUTES 18 SECONDS WEST, 2,640.37 FEET;

THENCE ALONG THE WEST LINE OF THE NORTHWEST QUARTER OF SAID SECTION 20, NORTH 0 DEGREES 41 MINUTES 18 SECONDS WEST, 794.76 FEET;

THENCE NORTH 89 DEGREES 16 MINUTES 31 SECONDS EAST, 1,464.50 FEET;

THENCE SOUTH 0 DEGREES 43 MINUTES 29 SECONDS EAST, 764.44 FEET;

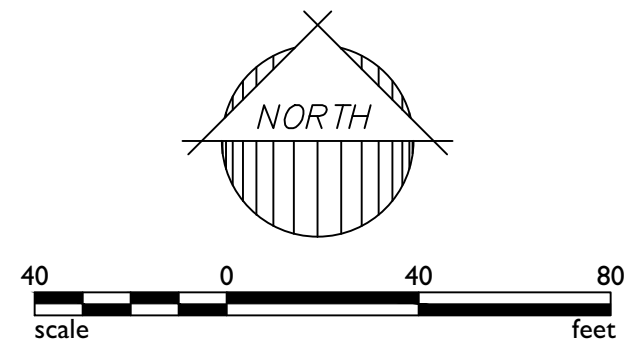
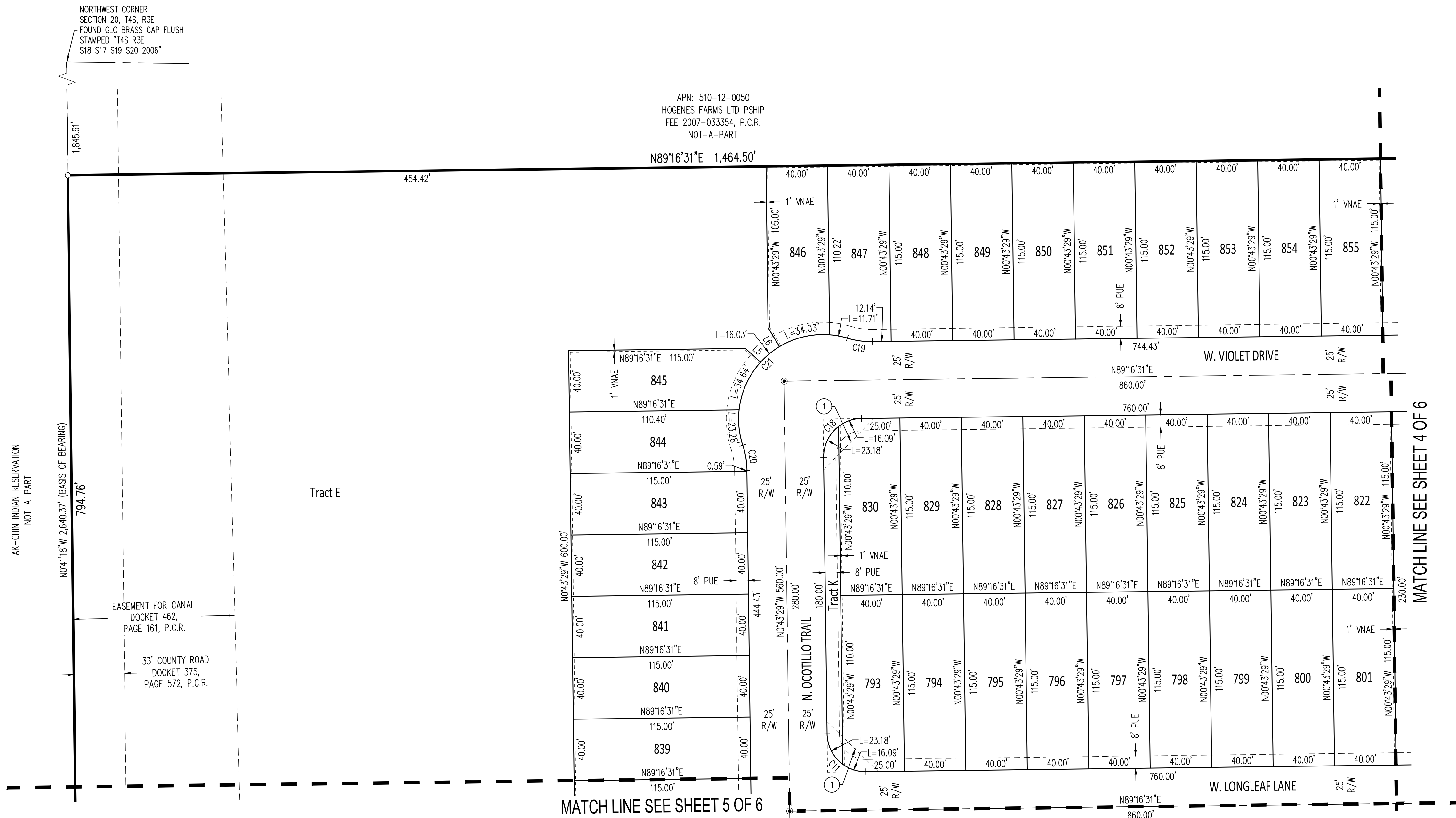
THENCE SOUTH 89 DEGREES 16 MINUTES 31 SECONDS WEST, 165.00 FEET;

THENCE SOUTH 0 DEGREES 43 MINUTES 29 SECONDS EAST, 75.56 FEET;

THENCE SOUTH 89 DEGREES 16 MINUTES 31 SECONDS WEST, 1,300.00 FEET;

THENCE NORTH 0 DEGREES 43 MINUTES 29 SECONDS WEST, 45.24 FEET TO THE POINT OF BEGINNING.

Revisions:		



1130 N. Alma School Rd, Suite 120
Mesa, AZ 85201
T:480.502.2250 | F:480.835.1799
www.epsgroupinc.com

Project:

"Hogenes Farms - Parcel 6"
MARICOPA, ARIZONA

Revisions:

No.	Description	By	Date

Call at least two full working days
before you begin excavation.

800-854-8000
In Maricopa County: (602)263-1100

Drawn by: A.G.
Reviewed by: G.H.

Job No.

19-0292

FP02

Sheet No.

2
of 6

