



Exhibit "A"
SP DUNN/AK CHIN LLC
Farrell Road Temporary Construction Easements

Job No. 19-1504

October 11, 2021

TEMPORARY CONSTRUCTION EASEMENT #1

A portion of the Northwest Quarter of Section 3, Township 5 South, Range 3 East of the Gila and Salt River Meridian, Pinal County, Arizona, and more particularly described as follows:

COMMENCING at a 3" ADOT Highway Department brass cap in hand hole at the West Quarter corner of said Section 3, from which a stem of brass cap at the Northwest corner of said Section 3, which bears North 0 degrees 38 minutes 14 seconds East, a distance of 2611.77 feet therefrom;

thence along the west line of said Northwest Quarter, North 0 degrees 38 minutes 14 seconds East, 1280.93 feet to a point on said west line;

thence, departing said west line South 89 degrees 49 minutes 25 seconds East, 149.23 feet;

thence North 0 degrees 40 minutes 14 seconds East, 131.45 feet to the **POINT OF BEGINNING**;

thence North 0 degrees 42 minutes 51 seconds East, 61.83 feet;

thence South 89 degrees 17 minutes 09 seconds East, 40.31 feet;

thence South 0 degrees 10 minutes 35 seconds West, 16.87 feet;

thence South 89 degrees 49 minutes 25 seconds East, 455.57 feet;

thence South 44 degrees 49 minutes 25 seconds East, 101.03 feet to the beginning of a non-tangent curve, concave Northwest, from which the radius point bears North 2 degrees 51 minutes 29 seconds West a distance of 1848.00 feet;

thence Northeasterly 557.54 feet along the arc of said curve through a central angle of 17 degrees 17 minutes 10 seconds;



thence on a non-tangent line North 0 degrees 19 minutes 51 seconds West, 86.54 feet;

thence North 68 degrees 32 minutes 02 seconds East, 43.35 feet;

thence North 4 degrees 49 minutes 06 seconds East, 18.05 feet;

thence North 0 degrees 13 minutes 16 seconds West, 282.77 feet;

thence South 89 degrees 48 minutes 45 seconds East, 553.35 feet;

thence North 55 degrees 06 minutes 18 seconds East, 358.49 feet;

thence North 74 degrees 03 minutes 36 seconds East, 104.67 feet;

thence North 55 degrees 06 minutes 18 seconds East, 117.03 feet to the beginning of a curve, concave Southeast, having a radius of 2568.50 feet;

thence Northeasterly 263.48 feet along the arc of said curve through a central angle of 5 degrees 52 minutes 39 seconds;

thence on a non-tangent line North 28 degrees 38 minutes 49 seconds West, 16.67 feet;

thence North 62 degrees 13 minutes 03 seconds East, 55.61 feet;

thence South 27 degrees 46 minutes 57 seconds East, 49.57 feet to the beginning of a non-tangent curve, concave Southeast, from which the radius point bears South 27 degrees 46 minutes 57 seconds East a distance of 2535.00 feet;

thence Southwesterly 314.69 feet along the arc of said curve through a central angle of 7 degrees 06 minutes 45 seconds;

thence on a non-tangent line South 34 degrees 53 minutes 42 seconds East, 10.00 feet;

thence South 55 degrees 06 minutes 18 seconds West, 221.50 feet;

thence North 34 degrees 53 minutes 42 seconds West, 44.00 feet;

thence South 55 degrees 06 minutes 18 seconds West, 291.00 feet;



thence South 34 degrees 53 minutes 42 seconds East, 44.00 feet;

thence South 55 degrees 06 minutes 18 seconds West, 307.95 feet to the beginning of a curve, concave Northwest, having a radius of 1875.00 feet;

thence Southwesterly 116.13 feet along the arc of said curve through a central angle of 3 degrees 32 minutes 55 seconds;

thence on a non-tangent line North 31 degrees 20 minutes 47 seconds West, 61.00 feet to the beginning of a non-tangent curve, concave Northwest, from which the radius point bears North 31 degrees 20 minutes 47 seconds West a distance of 1814.00 feet;

thence Southwesterly 289.82 feet along the arc of said curve through a central angle of 9 degrees 09 minutes 15 seconds;

thence on a non-tangent line South 22 degrees 43 minutes 45 seconds East, 61.00 feet to the beginning of a non-tangent curve, concave Northwest, from which the radius point bears North 22 degrees 12 minutes 35 seconds West a distance of 1875.00 feet;

thence Southwesterly 717.59 feet along the arc of said curve through a central angle of 21 degrees 55 minutes 40 seconds;

thence on a non-tangent line North 0 degrees 10 minutes 35 seconds East, 75.00 feet to the beginning of a non-tangent curve, concave Northerly, from which the radius point bears North 0 degrees 18 minutes 03 seconds West a distance of 1800.00 feet;

thence Westerly 15.00 feet along the arc of said curve through a central angle of 0 degrees 28 minutes 39 seconds;

thence North 89 degrees 49 minutes 25 seconds West, 315.00 feet;

thence South 0 degrees 02 minutes 23 seconds West, 75.00 feet;

thence North 89 degrees 49 minutes 25 seconds West, 57.03 feet;

thence North, 56.49 feet;

thence North 89 degrees 51 minutes 00 seconds West, 98.04 feet to the **POINT OF BEGINNING.**



Said portion of land containing 217,066 square feet, or 4.9832 acres, more or less, and being subject to any easements, restrictions, and/or rights-of-ways of record or otherwise.

This description shown hereon is not to be used to violate subdivision regulations of the State, Country and/or Municipality, or any other land division restrictions.

TEMPORARY CONSTRUCTION EASEMENT #2

A portion of the Northwest Quarter of Section 3, Township 5 South, Range 3 East of the Gila and Salt River Meridian, Pinal County, Arizona, and more particularly described as follows:

COMMENCING at a 3" ADOT Highway Department brass cap in hand hole at the West Quarter corner of said Section 3, from which a stem of brass cap at the Northwest corner of said Section 3, which bears North 0 degrees 38 minutes 14 seconds East, a distance of 2611.77 feet therefrom;

thence along the west line of said Northwest Quarter, North 0 degrees 38 minutes 14 seconds East, 1280.93 feet to a point on said west line;

thence, departing said west line South 89 degrees 49 minutes 25 seconds East, 149.23 feet;

thence South 0 degrees 40 minutes 14 seconds West, 88.58 feet to the **POINT OF BEGINNING**;

thence South 89 degrees 52 minutes 12 seconds East, 86.95 feet;

thence North 0 degrees 07 minutes 23 seconds East, 13.50 feet;

thence South 89 degrees 48 minutes 57 seconds East, 68.83 feet;

thence South 0 degrees 00 minutes 00 seconds East, 65.99 feet;

thence South 89 degrees 49 minutes 25 seconds East, 315.99 feet to the beginning of a non-tangent curve, concave Northerly, from which the radius point bears North 0 degrees 08 minutes 08 seconds East a distance of 2569.85 feet;

thence Easterly 16.00 feet along the arc of said curve through a central angle of 0 degrees 21 minutes 24 seconds;



thence on a non-tangent line North 0 degrees 10 minutes 35 seconds East, 66.00 feet to the beginning of a non-tangent curve, concave Northwest, from which the radius point bears North 0 degrees 16 minutes 34 seconds West a distance of 2025.00 feet;

thence Northeasterly 977.25 feet along the arc of said curve through a central angle of 27 degrees 39 minutes 02 seconds;

thence on a non-tangent line South 28 degrees 36 minutes 21 seconds East, 56.00 feet to the beginning of a non-tangent curve, concave Northwest, from which the radius point bears North 27 degrees 56 minutes 42 seconds West a distance of 2081.00 feet;

thence Northeasterly 261.44 feet along the arc of said curve through a central angle of 7 degrees 11 minutes 53 seconds;

thence on a non-tangent line North 34 degrees 28 minutes 56 seconds West, 55.98 feet;

thence North 55 degrees 06 minutes 18 seconds East, 359.54 feet;

thence South 34 degrees 53 minutes 42 seconds East, 48.00 feet;

thence North 55 degrees 06 minutes 18 seconds East, 234.00 feet;

thence North 34 degrees 53 minutes 42 seconds West, 48.00 feet;

thence North 55 degrees 06 minutes 18 seconds East, 217.50 feet;

thence South 34 degrees 53 minutes 42 seconds East, 17.00 feet to the beginning of a non-tangent curve, concave Southeast, from which the radius point bears South 34 degrees 53 minutes 42 seconds East a distance of 2358.00 feet;

thence Northeasterly 199.57 feet along the arc of said curve through a central angle of 4 degrees 50 minutes 57 seconds;

thence on a non-tangent line South 0 degrees 06 minutes 22 seconds West, 31.29 feet to the beginning of a non-tangent curve, concave Southeast, from which the radius point bears South 30 degrees 25 minutes 56 seconds East a distance of 2331.00 feet;



thence Southwesterly 46.15 feet along the arc of said curve through a central angle of 1 degrees 08 minutes 04 seconds;

thence on a non-tangent line South 31 degrees 33 minutes 59 seconds East, 23.00 feet;

thence South 57 degrees 45 minutes 11 seconds West, 54.82 feet;

thence North 32 degrees 25 minutes 17 seconds West, 23.00 feet to the beginning of a non-tangent curve, concave Southeast, from which the radius point bears South 32 degrees 55 minutes 20 seconds East a distance of 2331.00 feet;

thence Southwesterly 263.82 feet along the arc of said curve through a central angle of 6 degrees 29 minutes 05 seconds;

thence on a non-tangent line South 10 degrees 06 minutes 18 seconds West, 32.21 feet;

thence South 55 degrees 06 minutes 18 seconds West, 256.78 feet;

thence North 79 degrees 53 minutes 42 seconds West, 66.47 feet;

thence South 55 degrees 06 minutes 18 seconds West, 234.50 feet;

thence South 10 degrees 31 minutes 04 seconds West, 78.20 feet to the beginning of a non-tangent curve, concave Northwest, from which the radius point bears North 35 degrees 27 minutes 13 seconds West a distance of 2104.00 feet;

thence Southwesterly 287.13 feet along the arc of said curve through a central angle of 7 degrees 49 minutes 09 seconds;

thence on a non-tangent line North 73 degrees 36 minutes 21 seconds West, 80.28 feet to the beginning of a non-tangent curve, concave Northwest, from which the radius point bears North 26 degrees 01 minutes 41 seconds West a distance of 2052.00 feet;

thence Southwesterly 230.73 feet along the arc of said curve through a central angle of 6 degrees 26 minutes 33 seconds;

thence on a non-tangent line South 19 degrees 36 minutes 31 seconds East, 17.76 feet;



thence South 70 degrees 23 minutes 29 seconds West, 57.50 feet;

thence North 17 degrees 59 minutes 41 seconds West, 18.58 feet to the beginning of a non-tangent curve, concave Northwest, from which the radius point bears North 17 degrees 59 minutes 41 seconds West a distance of 2052.00 feet;

thence Southwesterly 556.24 feet along the arc of said curve through a central angle of 15 degrees 31 minutes 52 seconds;

thence on a non-tangent line South 45 degrees 10 minutes 35 seconds West, 94.98 feet;

thence North 89 degrees 49 minutes 25 seconds West, 459.42 feet;

thence South 0 degrees 11 minutes 54 seconds West, 16.81 feet;

thence North 89 degrees 19 minutes 46 seconds West, 40.71 feet;

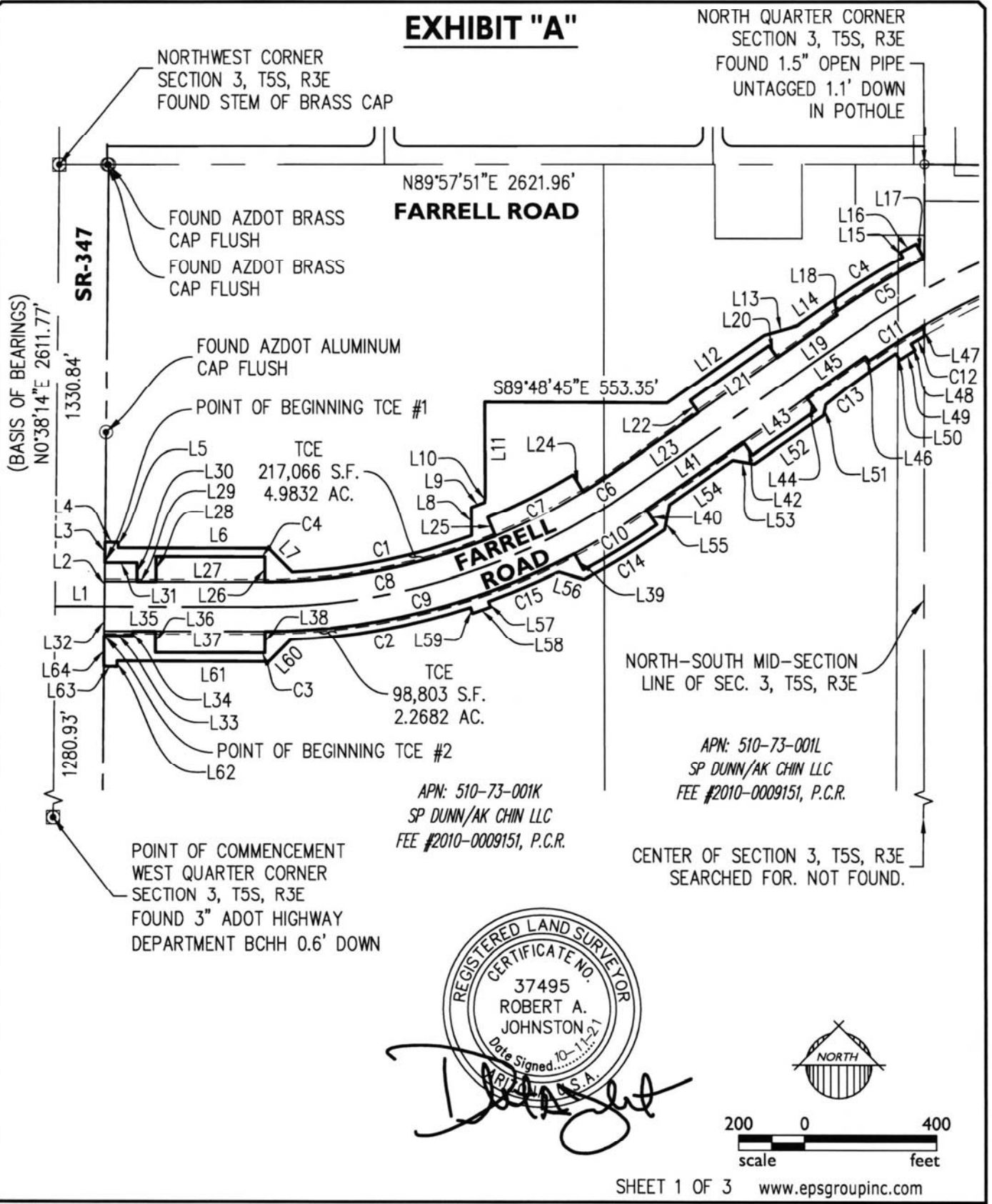
thence North 0 degrees 40 minutes 14 seconds East, 94.87 feet to the **POINT OF BEGINNING**.

Said portion of land containing 98,803 square feet, or 2.2682 acres, more or less, and being subject to any easements, restrictions, and/or rights-of-ways of record or otherwise.

This description shown hereon is not to be used to violate subdivision regulations of the State, Country and/or Municipality, or any other land division restrictions.



EXHIBIT "A"



19-1504

EXHIBIT A

SP DUNN/AK CHIN LLC APN 510-73-001K & 510-73-001L
FARRELL ROAD TEMPORARY CONSTRUCTION EASEMENTS



EXHIBIT "A"

LINE TABLE		
LINE	BEARING	LENGTH
L1	S89°49'25"E	149.23'
L2	N00°40'14"E	131.45'
L3	N00°42'51"E	61.83'
L4	S89°17'09"E	40.31'
L5	S00°10'35"W	16.87'
L6	S89°49'25"E	455.57'
L7	S44°49'25"E	101.03'
L8	N00°19'51"W	86.54'
L9	N68°32'02"E	43.35'
L10	N04°49'06"E	18.05'
L11	N00°13'16"W	282.77'
L12	N55°06'18"E	358.49'
L13	N74°03'36"E	104.67'
L14	N55°06'18"E	117.03'
L15	N28°38'49"W	16.67'
L16	N62°13'03"E	55.61'
L17	S27°46'57"E	49.57'
L18	S34°53'42"E	10.00'
L19	S55°06'18"W	221.50'
L20	N34°53'42"W	44.00'
L21	S55°06'18"W	291.00'
L22	S34°53'42"E	44.00'
L23	S55°06'18"W	307.95'
L24	N31°20'47"W	61.00'

LINE TABLE		
LINE	BEARING	LENGTH
L25	S22°43'45"E	61.00'
L26	N00°10'35"E	75.00'
L27	N89°49'25"W	315.00'
L28	S00°02'23"W	75.00'
L29	N89°49'25"W	57.03'
L30	N00°00'00"W	56.49'
L31	N89°51'00"W	98.04'
L32	S00°40'14"W	88.58'
L33	S89°52'12"E	86.95'
L34	N00°07'23"E	13.50'
L35	S89°48'57"E	68.83'
L36	S00°00'00"E	65.99'
L37	S89°49'25"E	315.99'
L38	N00°10'35"E	66.00'
L39	S28°36'21"E	56.00'
L40	N34°28'56"W	55.98'
L41	N55°06'18"E	359.54'
L42	S34°53'42"E	48.00'
L43	N55°06'18"E	234.00'
L44	N34°53'42"W	48.00'
L45	N55°06'18"E	217.50'
L46	S34°53'42"E	17.00'
L47	S00°06'22"W	31.29'
L48	S31°33'59"E	23.00'

LINE TABLE		
LINE	BEARING	LENGTH
L49	S57°45'11"W	54.82'
L50	N32°25'17"W	23.00'
L51	S10°06'18"W	32.21'
L52	S55°06'18"W	256.78'
L53	N79°53'42"W	66.47'
L54	S55°06'18"W	234.50'
L55	S10°31'04"W	78.20'
L56	N73°36'21"W	80.28'
L57	S19°36'31"E	17.76'
L58	S70°23'29"W	57.50'
L59	N17°59'41"W	18.58'
L60	S45°10'35"W	94.98'
L61	N89°49'25"W	459.42'
L62	S00°11'54"W	16.81'
L63	N89°19'46"W	40.71'
L64	N00°40'14"E	94.87'



SHEET 2 OF 3 www.epsgroupinc.com

19-1504

EXHIBIT A

SP DUNN/AK CHIN LLC APN 510-73-001K & 510-73-001L
FARRELL ROAD DRAINAGE EASEMENTS



EXHIBIT "A"

CURVE TABLE					
CURVE	LENGTH	RADIUS	DELTA	CHORD	CHORD BRG
C1	557.54'	1848.00'	17°17'10"	555.43'	N78°29'56"E
C2	556.24'	2052.00'	15°31'52"	554.53'	N79°46'16"E
C3	16.00'	2569.85'	0°21'24"	16.00'	N89°57'26"E
C4	15.00'	1800.00'	0°28'39"	15.00'	N89°56'16"E
C5	314.69'	2535.00'	7°06'45"	314.48'	S58°39'41"W
C6	116.13'	1875.00'	3°32'55"	116.11'	N56°52'46"E
C7	289.82'	1814.00'	9°09'15"	289.51'	N63°13'51"E
C8	717.59'	1875.00'	21°55'40"	713.22'	N78°45'15"E
C9	977.25'	2025.00'	27°39'02"	967.79'	N75°53'55"E
C10	261.44'	2081.00'	7°11'53"	261.27'	N58°27'22"E
C11	199.57'	2358.00'	4°50'57"	199.51'	S57°31'47"W
C12	46.15'	2331.00'	1°08'04"	46.15'	S59°00'03"W
C13	263.82'	2331.00'	6°29'05"	263.68'	S53°50'07"W
C14	287.13'	2104.00'	7°49'09"	286.91'	N58°27'22"E
C15	230.73'	2052.00'	6°26'33"	230.61'	N67°11'35"E



SHEET 3 OF 3 www.epsgroupinc.com

19-1504

EXHIBIT A

SP DUNN/AK CHIN LLC APN 510-73-001K & 510-73-001L
FARRELL ROAD DRAINAGE EASEMENTS

