

PHOTOMETRIC NOTES

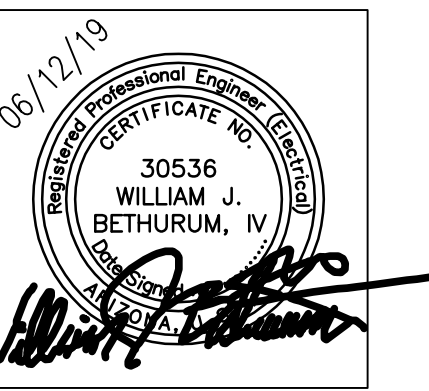
A. THE PHOTOMETRIC DATA ON THIS SHEET HAS BEEN REVIEWED BY THE ENGINEER FOR COMPLIANCE WITH APPLICABLE LIGHTING CODES. THE CALCULATIONS ARE PERFORMED BY LIGHTING SUPPLIER AND THE ENGINEER'S REVIEW IS NOT A GUARANTEE OF PERFORMANCE. SUBSTITUTIONS TO ANY FIXTURE WILL REQUIRE UPDATED PHOTOMETRICS WHICH WILL BE THE RESPONSIBILITY OF THE CONTRACTOR. THE FIXTURE SCHEDULE SHOWN ON THIS SHEET IS FOR CALCULATION PURPOSES ONLY. DO NOT USE AS A BILL-OF-MATERIAL. REFER TO THE PROJECT FIXTURE SCHEDULE.



swan  
architects, inc.

architecture  
planning  
historic preservation

833 N. 5th Ave.  
Phoenix, AZ  
85003  
Tel: 602-264-3083  
Fax: 602-274-7658



PHOTOMETRIC SITE PLAN  
PINAL COUNTY ADMINISTRATION COMPLEX  
IN THE CITY OF MARICOPA  
19955 N. WINSLOW AVENUE  
MARICOPA, ARIZONA 85239

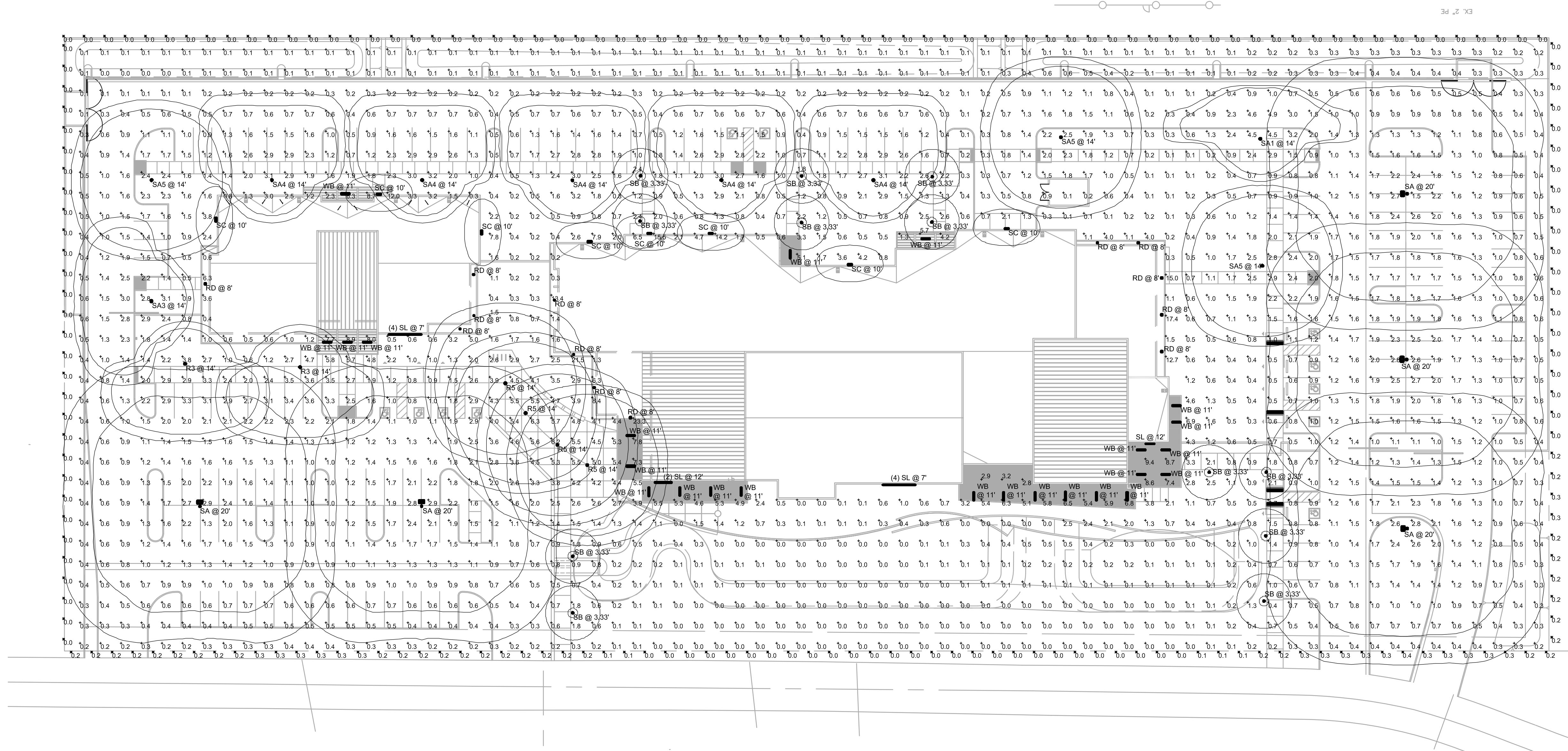
drawing:  
project:

date: June 12, 2019  
drawn: ETS  
checked: WB  
rev:

project number(s):

sheet:

E1.1



1 PHOTOMETRIC SITE PLAN  
SCALE: 1/8"=1'-0"

Symbol	Label	Quantity	Manufacturer	Catalog Number	Description	Lamp	Number Lamps	Filename	Lumens Per Lamp	Light Loss Factor	Wattage
○	R3	2	SELUX	EXRL-14-R3-5G700-30-XX-UN	FULL CUT OFF ROUND LED LIGHT COLUMN WITH TYPE 3 OPTICS, MOUNTED @ 14' AFG	3000K LED	1	EXRL-X-R3-5G140-30-XX-UNV.ies	9496.004	0.54	64
○	R5	4	SELUX	EXRL-14-R55-5G700-30-XX-UN	FULL CUT OFF ROUND LED LIGHT COLUMN WITH TYPE 5 SQUARE OPTICS, MOUNTED @ 14' AFG	3000K LED	1	EXRL-X-R55-5G140-30-XX-UNV.ies	10015.22	0.54	64
□	RD	13	GOTHAM	EVO SQ 30/10 4AR LSS MVOLT GZ10	1000LM 80 CRI 3000K MWD GOTHAM EVO 4" SQUARE DOWNLIGHT SEMI SPECULAR REFLECTOR	3000K LED	1	EVO_SQ_35_10_4AR_LS S.ies	1230.668	0.91	12.92
□	SA	5	LITHONIA	DSX0 LED P7 30K T5W MVOLT / SSS 22.5" WITH 2.5" BASE	DSX0 LED P7 30K T5W MVOLT	3000K LED	1	DSX0_LED_P7_30K_T5W_MVOLT.ies	17575.18	0.91	166
□	SA1	1	LITHONIA	DSX0 LED P7 30K MVOLT / SSS 12.5" WITH 2.5" BASE	DSX0 LED P7 30K MVOLT	3000K LED	1	DSX0_LED_P7_30K_MVOLT.ies	7000	0.91	71
□	SA3	1	LITHONIA	DSX0 LED P7 30K MVOLT / SSS 12.5" WITH 2.5" BASE	DSX0 LED P7 30K MVOLT	3000K LED	1	DSX0_LED_P7_30K_MVOLT.ies	7000	0.91	71
□	SA4	5	LITHONIA	DSX0 LED P7 30K MVOLT / SSS 12.5" WITH 2.5" BASE	DSX0 LED P7 30K MVOLT	3000K LED	1	DSX0_LED_P7_30K_MVOLT.ies	7000	0.91	71
□	SA5	3	LITHONIA	DSX0 LED P7 30K MVOLT / SSS 12.5" WITH 2.5" BASE	DSX0 LED P7 30K MVOLT	3000K LED	1	DSX0_LED_P7_30K_MVOLT.ies	7000	0.91	71
○	SB	12	BEGA	99 570 K3	ROUND LED BOLLARD WITH 360° SYMMETRIC DISTRIBUTION, MOUNTED @ 39" AFG	3000K LED	1	99570.ies	746	0.91	17
□	SC	8	BEGA	33 242	Wall Mount area light	3000K LED	1	33242.IES	1890.725	0.91	22.9
	SL	11	ECOSENSE	L50-E-48"-06-30-80-MULT-120	IP66 RATED WET LOCATION LINEAR COVE LIGHT WITH 120° BEAM	3000K LED	16	L50-I-12-06-30-80-MULT-120.ies	24	0.91	24
	WB	24	AXIS	WBWLED-500-80-30-W4-XX-UNV-DP-1	AXIS LIGHTING WET BEAM DIRECT LED LUMINAIRE WITH WHITE REFLECTOR AND WHITE TRANSLUCENT LENS	3000K LED	1	WBWLED-500-80-35-S.ies	1983.32	0.91	22

Statistics						
Description	Symbol	Avg	Max	Min	Max/Min	Avg/Min
PROPERTY LINE	✕	0.1 fc	0.4 fc	0.0 fc	N/A	N/A
SITE	+	1.3 fc	23.3 fc	0.0 fc	N/A	N/A

**VoltaUS**  
CONSULTING  
2633 E. Indian School Rd., Ste. 210, Phoenix, AZ 85016  
Tel. (480) 659-0511, VoltaUS.com

**APPLIED ENGINEERING**  
2800 S. RURAL RD. SUITE 101  
TEMPE, AZ 85282 (480) 968 3070  
JOB NUMBER 18-077

THIS DRAWING CONTAINS DATA AND INFORMATION WHICH IS THE PROPERTY OF VOLTAUS. THIS DRAWING IS RECEIVED BY CONFORMANCE AND THE SPECIFIC CONTENTS MAY NOT BE COPIED OR DISCLOSED WITHOUT PRIOR WRITTEN CONSENT OF VOLTAUS. WHEN THIS DRAWING IS DIGITALLY SIGNED AND TRANSMITTED IN ELECTRONIC FORM, THE DRAWING CONTAINS A DIGITAL SIGNATURE IN COMPLIANCE WITH A.R.S. 41 & 44 AND ARIZONA TECHNICAL BOARD OF REGISTRATION. ELECTRONIC COPIES OF CERTIFIED DOCUMENTS ARE STORED WITH VOLTAUS TO PREVENT UNAUTHORIZED MODIFICATIONS.

VUS\_P01\_800419\_6.11.19



LED bollard - 360° distribution BEGA

Application: LED bollard with sheared 360° light distribution. This luminaire is designed to provide rotationally symmetrical illumination of ground surfaces.


Type: BEGA Product: Project: Modified:

Materials: Luminaire housing and base constructed of die-cast and extruded marine grade, copper free (6.03% copper content) A300 aluminum alloy. Reflector made of pure anodized aluminum. High temperature silicone gasket. Mechanically captive stainless steel fastener.

Electrical: 120-277VAC. Minimum start temperature: -30°C. LED module wattage: 14.4W. System wattage: 20.0W. Color rendering index: Ra90. Luminaire lumens: 746 lumens (5000K). Lifetime at Ta=15°C: 53,000 h (L70).

LED color temperature: 4000K, 4500K, 5000K, 5500K, 6000K, 6500K. BEGA can supply you with suitable LED replacement modules for up to 20 years after the purchase of LED luminaires - see website for details.

Finish: All BEGA standard finishes are matte, textured polyester powder coat with minimum 3 mil thickness.



LED bollard - 360° distribution. 99.570, 14.4W, 65% 50%, 79.417.

BEGA 1000 BEGA Way, Carpinteria, CA 93013 (805) 684-0533. info@bega-us.com. BEGA reserves the right of lighting products and the associated technologies, luminaire data on this sheet is subject to change at the discretion of BEGA North America.

④ FIXTURE TYPE 'SB'  
NO SCALE

D-Series Size 0 LED Area Luminaire


Specifications: EPA: 0.95 ft² (0.09 m²), Length: 26" (660 mm), Width: 13" (330 mm), Height: 3" (76 mm), Weight: 16 lbs (7.2 kg).

Introduction: The modern styling of the D-Series is striking yet unobtrusive - making a bold, progressive statement even as it blends seamlessly with its environment.

Ordering Information: EXAMPLE: DSKO LED P6 40K T3M MVOLT SPA NL2AIRZ PIRHW DDBXD.

Series	LEDs	Color temperature	Distribution	Voltage	Mounting	Shipped included
DSK0 LED	P1, P4, P7	300K, 4000K, 5000K	T15, T25, T35, T55	120V, 277V	MAV1, MAV2, MAV3, MAV4	SMA, SMA, SMA, SMA, SMA

Capable Luminaire: A+ Capable luminaire indicated by this color background.



③ FIXTURE TYPES 'SA', 'SA1', 'SA3', 'SA4', 'SA5'  
NO SCALE

gotham

4" Evo® Square Downlight

Optical System: Self-flanged or flangeless semi-specular, matte-diffuse finishing trim. Patented Bouncing Ray™ optical design (U.S. Patent No. 5,800,050).

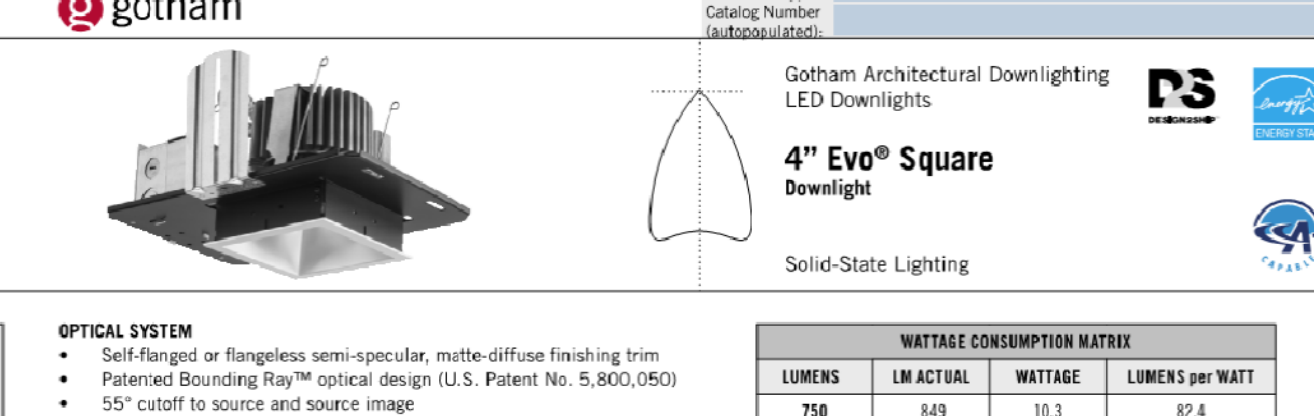
Mechanical System: 16-gauge galvanized steel construction; maximum 1-1/4" ceiling thickness. Telescopic mounting bars maximum of 24" and minimum of 15", included. 4" vertical adjustment.

Electrical System: Fully serviceable and upgradeable lensed LED light engine. 70% lumen maintenance at 60,000 hours.

Capable Luminaire: This item is an A+ capable luminaire, which has been designed and tested to provide consistent color appearance and light-to-bee control compatibility with simple commissioning.

Warranty: 5-year limited warranty. Complete warranty terms located at: www.capablebrands.com/customerresources/terms-and-conditions.html

LUMENS	LM ACTUAL	WATTAGE	LUMENS PER WATT
750	640	18.3	82.4
1000	1180	22.8	92.9
1500	1550	27.3	87.2
2000	2100	23.5	89.6
2500	2570	29.9	86.1
3000	3110	36.9	84.3



② FIXTURE TYPE 'RD'  
NO SCALE

selux

Exelie LED

Order Code: [Blank]

Nominal Overall Ht.	08 ft.	09 ft.	10 ft.	11 ft.	12 ft.	13 ft.	14 ft.
15 ft.	16 ft.	17 ft.	18 ft.	19 ft.	20 ft.		

Optic: R1 Type I, R2 Type II, R3 Type III, R4 Type IV, R5R Type V, R5S Type V Square.

Light Engine: SG350, SG530, SG700, SG105, SG140.

Finish: WH White, BK Black, BL Brushed, BZ Bronze, SV Silver, SP Specy P Premium Color.

Voltage: 120, 208, 240, 277, UNV, 347, 480.


Options: DM, HL50, HS, REC, REC2, REC3, MS, PC.

Product Modifications: [Blank]

Approvals: [Blank]

Date: [Blank]

SELUX CORPORATION © 2019, P.O. BOX 1402, 800-750-8927. www.selux.com. SELUX is a registered party to the best practices, maintenance and safety to change without notice, specifications or materials that our brands will not after the function of the product.



① FIXTURE TYPES 'R3', 'R5'  
NO SCALE

Wet BEAM4 LED WALL MOUNT

Project: Type: Notes:

Performance per linear foot at 3500K:

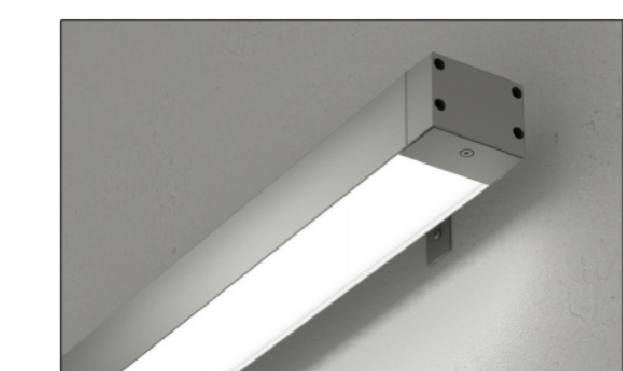
NOMINAL LUMEN OUTPUT	WATTAGE	EFFICACY
500 lm/ft	4.75 W/ft	104 lm/W
750 lm/ft	8.3 W/ft	90 lm/W

Ordering Guide: PRODUCT ID, NOM LUMENS/FT, CRI, COLOR TEMP, SHIELDING, LENGTH (FT).

FINISH	VOLTAGE	DRIVER	CIRCUITS	BATTERY (OPTIONAL)
AP aluminum paint	120-277V	DP dimming 0-100% Triac	1 circuit, 2 circuits	B# battery pack (optional)

Other optional: F, BE, BK, C. IC controls optional: OS# occupancy sensor, EN, WCA. Customer optional: C, N.

Axis Lighting Inc. 837 North Sprink Street, Suite 500, Los Angeles, CA 90012. 310.496.6255.



⑦ FIXTURE TYPE 'WB'  
NO SCALE

ECOSENSE TROV EXTERIOR | LSO COVE

Overview: Specifications - Ordering. DATE, PROJECT, FINISH, TYPE.

The LSO includes patented optical design that delivers the widest range of beam angle options for precise cove, wall, grazing, wall washing or line of light applications.

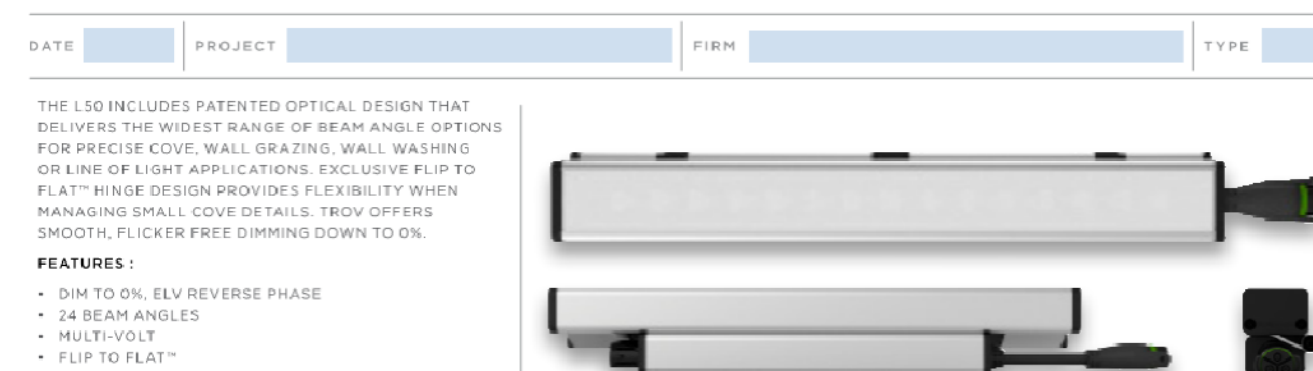
Performance:

WATTS	OPTIC	LUMEN OUTPUT	EFFICACY
2W	120°	95 lm/ft (31 lm/m)	48 lm/W

Electrical: 2W/120V (0.017A), 4W/120V (0.033A), 6W/120V (0.050A), 8W/120V (0.067A), 10W/120V (0.083A), 12W/120V (0.100A).

Power Factor: 0.95. CREATIVE VOLTAGE DRIVER. STARTUP TEMPERATURE: -40°F TO 122°F (-40°C TO 50°C). OPERATING TEMPERATURE: -40°F TO 122°F (-40°C TO 50°C). STORAGE TEMPERATURE: -40°F TO 176°F (-40°C TO 80°C).

Axis Lighting Inc. 837 North Sprink Street, Suite 500, Los Angeles, CA 90012. 310.496.6255.



⑥ FIXTURE TYPE 'SL'  
NO SCALE

Wall luminaires with directed light

Housing: One piece die-cast aluminum supplied with universal mounting bracket for direct attachment to 3/16" or 4" octagonal wiring box.

Enclosure: One piece die-cast aluminum cover frame secured by captive socket head, stainless steel screws threaded into stainless steel inserts.

Electrical: 17.0W LED luminaire, 22.0 total system watts, -30°C start temperature.

Finish: All BEGA standard finishes are polyester powder coat with minimum 3 mil thickness.

Weight: lbs.

Luminaire Lumens: 1883

BEGA 1000 BEGA Way, Carpinteria, CA 93013 (805) 684-0533. www.bega-us.com.



⑤ FIXTURE TYPE 'SC'  
NO SCALE

VoltaUS CONSULTING

2633 E. Indian School Rd., Ste. 210, Phoenix, AZ 85016. Tel: (480) 659-0511, VoltaUS.com

THIS DRAWING CONTAINS DATA AND INFORMATION WHICH IS THE PROPERTY OF VOLTAUS. THIS DRAWING IS REPRODUCED IN CONFORMANCE AND THE SPECIFIC CONTENTS MAY BE REVISED OR DISCLOSED WITHOUT PRIOR WRITTEN CONSENT OF VOLTAUS WHEN THE DRAWING IS DIGITALLY SCANNED AND TRANSMITTED IN ELECTRONIC FORM. THE DRAWING CONTAINS A GRAPHIC ISOMETRIC IN CONFORMANCE WITH A.R.S. 41 & 44 AND AN ARIZONA TECHNICAL BOARD OF REGISTRATION. ELECTRONIC COPIES OF CERTIFIED DOCUMENTS ARE FORWARDED WITH THIS DRAWING TO PREVENT UNAUTHORIZED MODIFICATIONS.

APPLIED ENGINEERING

2800 S. RURAL RD., SUITE 101 TEMPE, AZ 85282 (480) 868 3070

JOB NUMBER 18-077

sheet: E1.2

swan architects, inc.

architecture planning historic preservation

833 N. 5th Ave. Phoenix, AZ 85003

Tel: 602-264-3083 Fax: 602-274-7658

Professional Engineer License 30536 WILLIAM J. BETHURUM, IV

SEAL EXPIRES: 09/30/20

drawing: SITE LIGHTING CUTSHEETS

project: PINAL COUNTY ADMINISTRATION COMPLEX IN THE CITY OF MARICOPA 19955 N. WINSLOW AVENUE MARICOPA, ARIZONA 85239

date: June 12, 2019

drawn: ETS

checked: WB

rev:

project number(s):