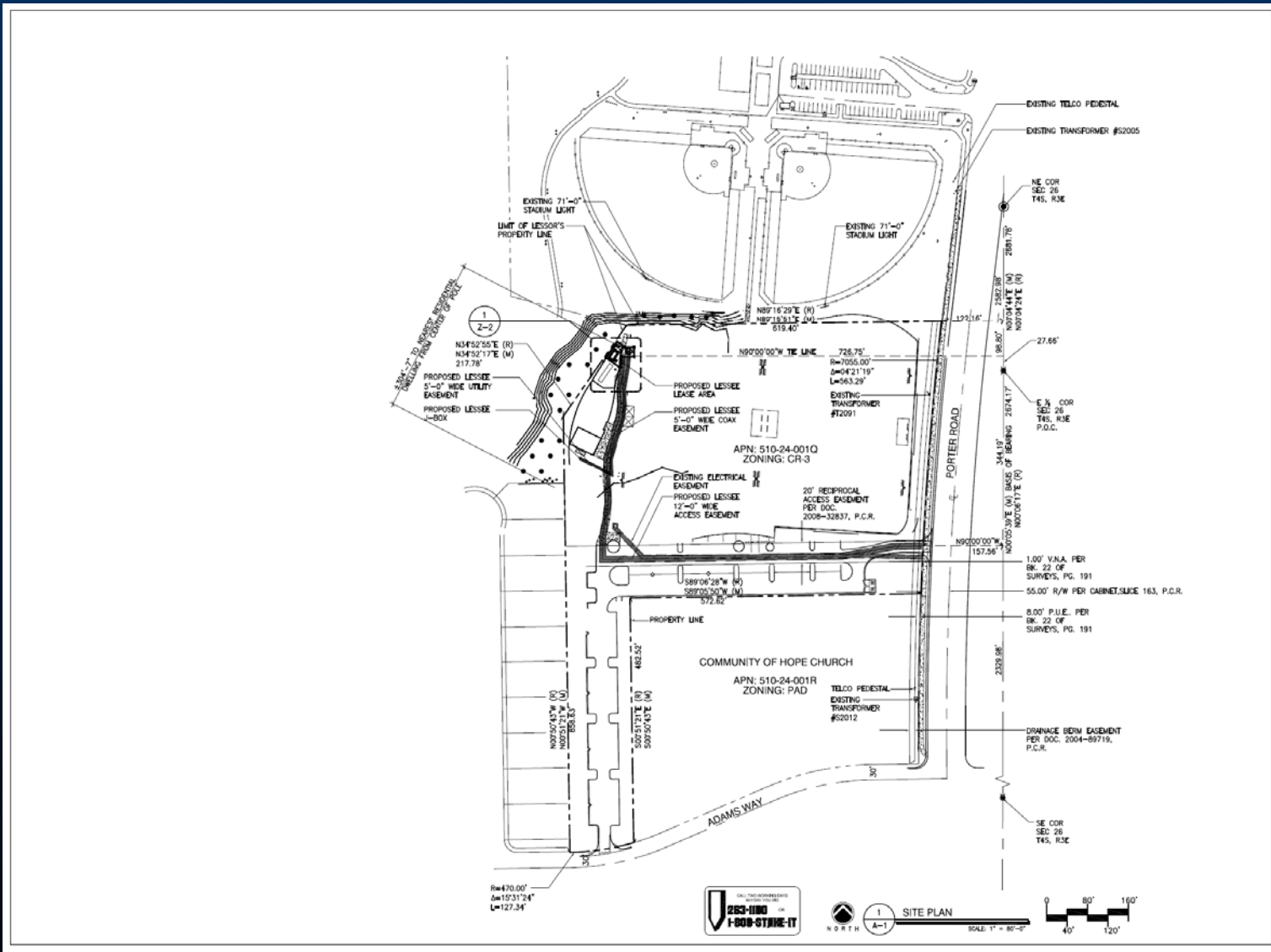




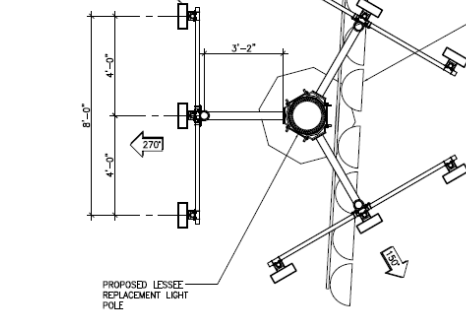
**Conditional Use Permit
12-02
Verizon Wireless Antenna**







PROPOSED LESSEE ANTENNAS - (3) SECTORS WITH (5) ANTENNAS PER SECTOR.

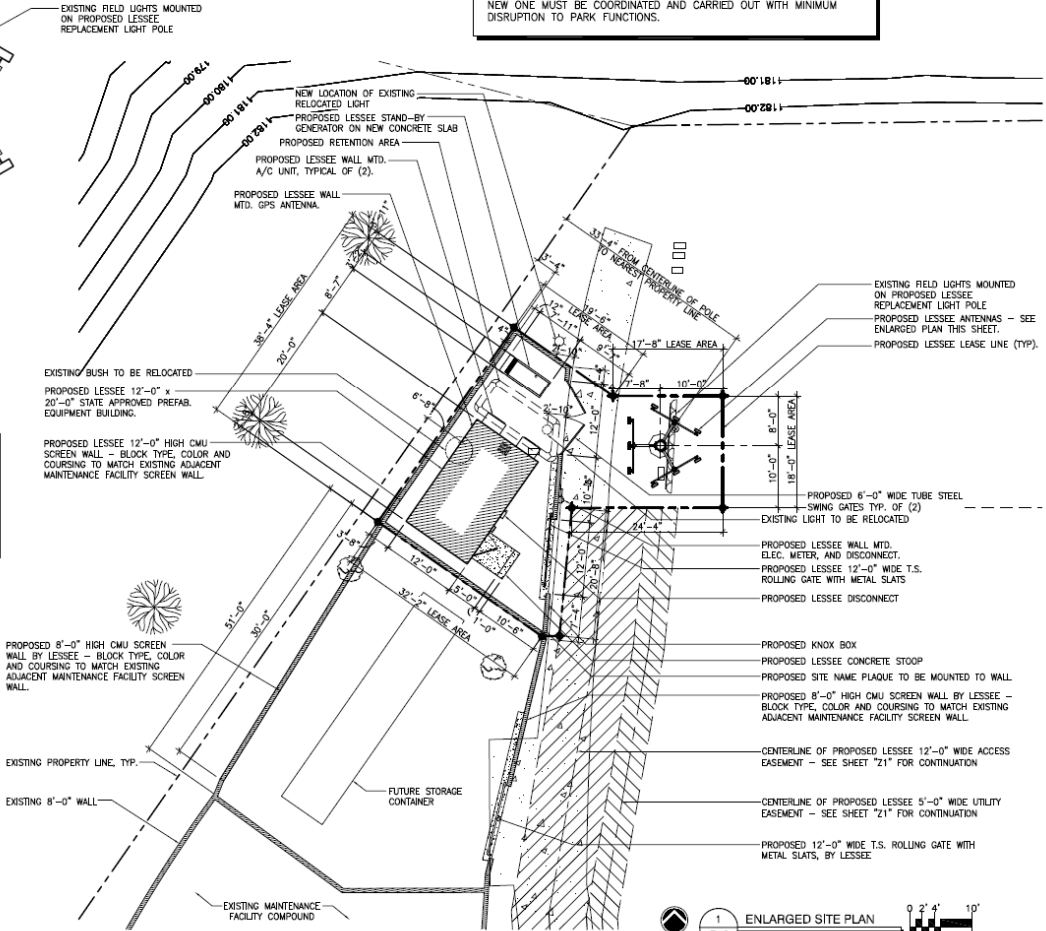


3 ENLARGED ANTENNA PLAN
A-2 SCALE 1/8" = 1'-0"

COAXIAL CABLE TABLE					
SECTOR	AZIMUTH	LENGTH	NO.	SIZE	TYPE
ALPHA	30°	+/- 105'-0"	(4)	7/8"	AVAS-50
BETA	150°	+/- 105'-0"	(4)	7/8"	AVAS-50
GAMMA	270°	+/- 105'-0"	(4)	7/8"	AVAS-50

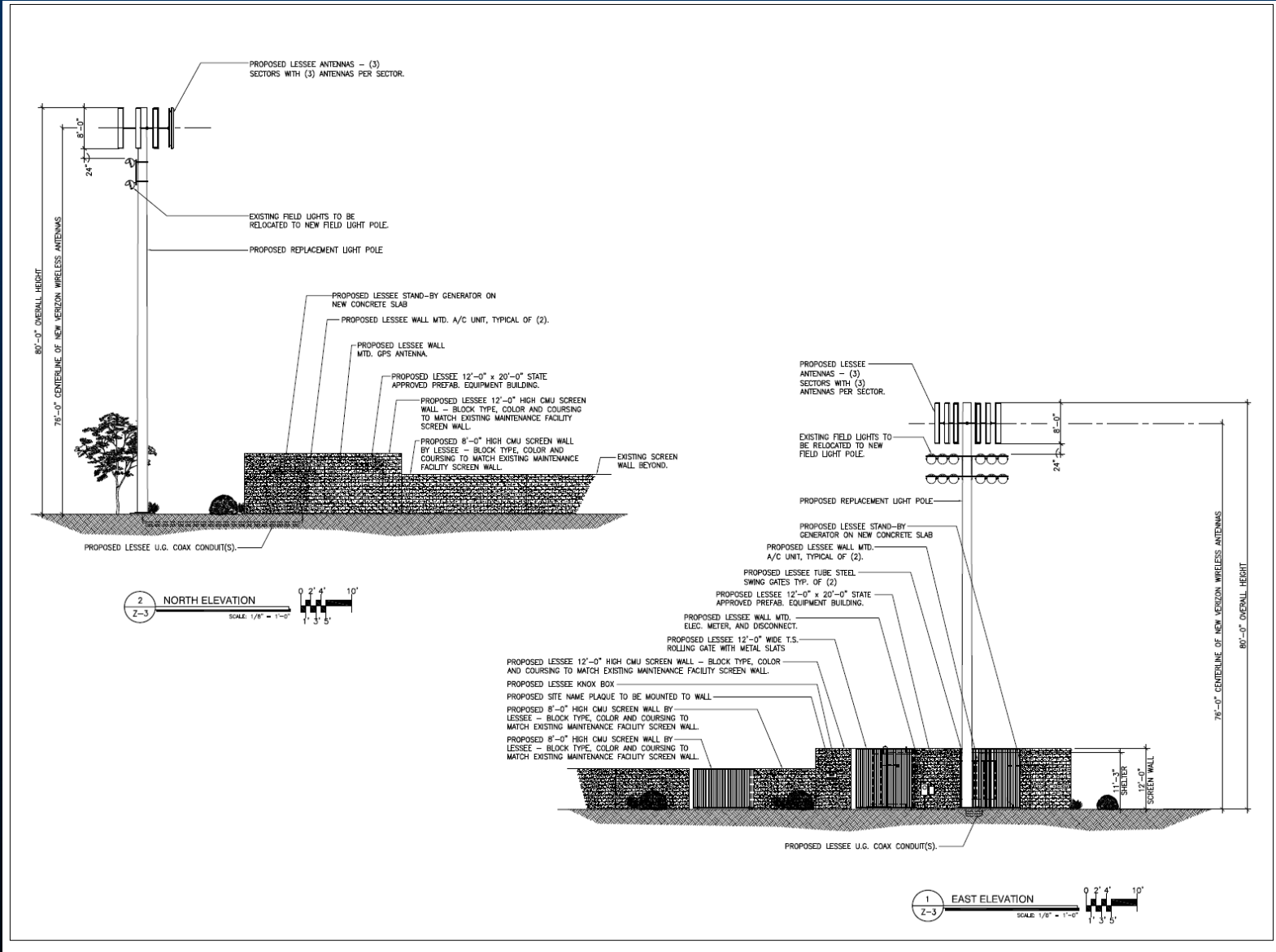
RETENTION CALCULATIONS	
$V_{RETD} = 7200 \cdot C \cdot I \cdot A$	
C = WEIGHTED RUNOFF COEFFICIENT	
I = RAINFALL INTENSITY (IN/HR)	
A = TOTAL AREA (ACRES)	
$V_{RETD} = 7200 \cdot (0.75) \cdot (1.20) \cdot (0.023)$	
$V_{RETD} = 149 \text{ cu ft}$	
$V_{PROVIDED} = 11 \cdot 17 \cdot 0.833 = 156 \text{ cu ft}$	

NOTES:
 • BALL FIELD LIGHTS TO BE MOUNTED AT SAME HEIGHT AS EXISTING BALL FIELD LIGHTS
 • ANY DAMAGE TO THE PAK SIDEWALK, IRRIGATION/SPRINKLER SYSTEMS, ETC. IS THE SOLE RESPONSIBILITY OF VERIZON WIRELESS AND MUST BE REPAIRED TO THE SATISFACTION OF CITY OF MARICOPA'S BUILDING INSPECTOR AND PARK SUPERVISOR.
 • VERIZON WIRELESS MUST PROVIDE REMOVAL AND CAPPING OF IRRIGATION LINES.
 • VERIZON WIRELESS MUST PROVIDE REMOVAL OR RELOCATION OF LANDSCAPING.
 • THE WORK TO REMOVE THE EXISTING POLE AND REPLACE IT WITH THE NEW ONE MUST BE COORDINATED AND CARRIED OUT WITH MINIMUM DISRUPTION TO PARK FUNCTIONS.



1 ENLARGED SITE PLAN
Z-2 SCALE 1/8" = 1'-0"







- BEFORE -



Verizon Wireless – AZ5 Glennwilde Groves

18800 N. Porter Road
Maricopa, AZ 85139





NEW LESSEE ANTENNAS MOUNTED
TO REPLACEMENT LIGHTPOLE

- AFTER -



Verizon Wireless – AZ5 Glennwilde Groves

18800 N. Porter Road
Maricopa, AZ 85139

