

MATERIAL/COLOR SCHEDULE

MATERIALS

1. ANODIZED ALUMINUM STOREFRONT FRAME WITH 1" INSULATED LOW-E, CLEAR GLAZING
2. INTEGRAL COLOR E.I.F.S. - FINE SAND TEXTURE
3. HOLLOW METAL DOOR AND FRAME - PAINTED
4. THIN BRICK
5. METAL AWNING
6. STEEL COLUMN - PAINTED
7. STEEL BEAM - PAINTED
8. FUTURE TENANT SIGNAGE UNDER SEPARATE PERMIT AND SUBMITTAL
9. 22 GA PRE-FINISHED METAL CAP FLASHING
10. AUTOMATIC DRIVE-THRU WINDOW
11. STEEL SIGN LEDGE
12. LIGHT FIXTURE - BLACK
13. STANDING SEAM METAL ROOF
14. CORRUGATED METAL
15. REFINED WOOD STONE
16. INTEGRAL COLOR E.I.F.S. CAP - FINE SAND TEXTURE
17. PROPOSED GRAPHIC / MURAL
18. HVAC EQUIPMENT BEYOND SHOWN DASHED
19. ROOF LINE BEYOND SHOWN DASHED

COLORS

by Sherwin Williams (or Equal):

- A. SW 7069 - "IRON ORE"
B. SW 7003 - "TOQUE WHITE"
C. SW 7018 - "DOVETAIL"
D. SW 6071 - "POPULAR GRAY"

by Coronado Stone (or Equal):

- G. REFINED WOODSTONE
"ANTIQUE WHITE"

by Western States Metal Roofing (or Equal):

- E. "SLATE GRAY"

Aluminum Storefront:

- H. "DARK BRONZE ANODIZED"

by Endicott (or Equal):

- F. MODULAR - "SIENNA IRONSPOT"

MATERIAL X
FINISH X



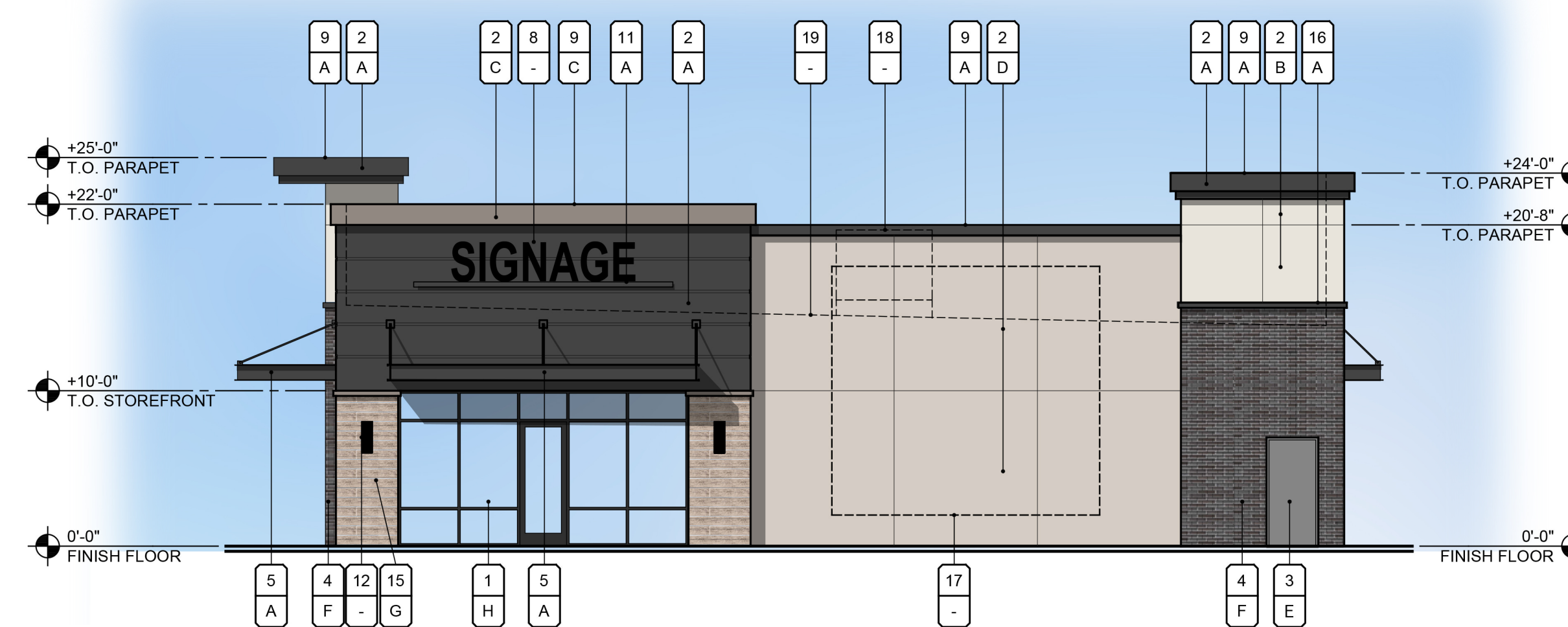
1 WEST ELEVATION

SCALE: 1/8" = 1'-0"



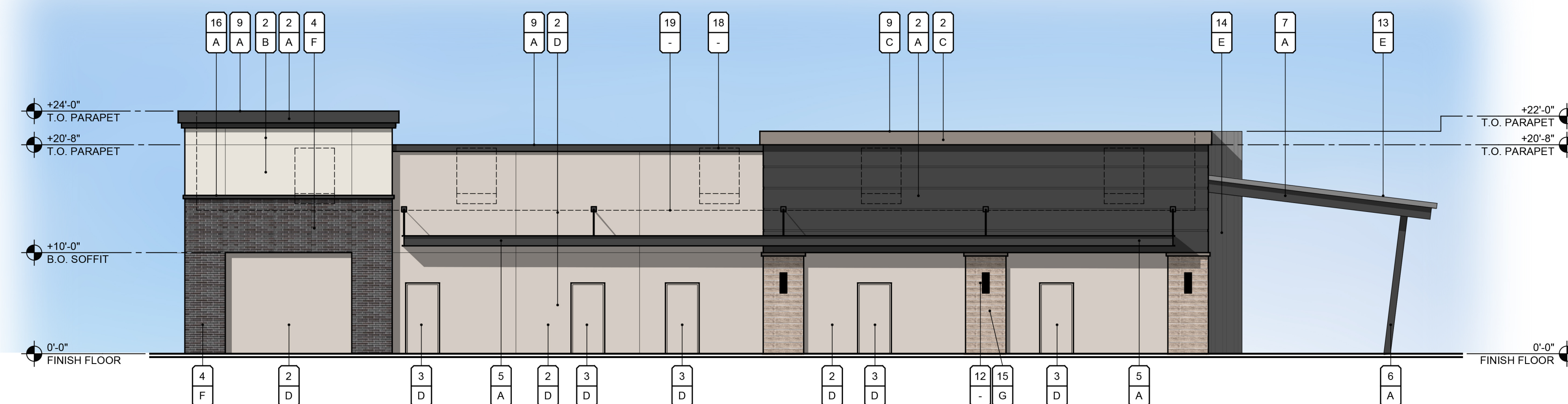
2 NORTH ELEVATION

SCALE: 1/8" = 1'-0"



4 SOUTH ELEVATION

SCALE: 1/8" = 1'-0"



3 EAST ELEVATION

SCALE: 1/8" = 1'-0"

Legacy on Porter
Shops A Exterior Elevations
NEC Maricopa - Porter Road and Casa Grande Hwy.
City of Maricopa, AZ

06.20.2025
PROJECT NO. 24112



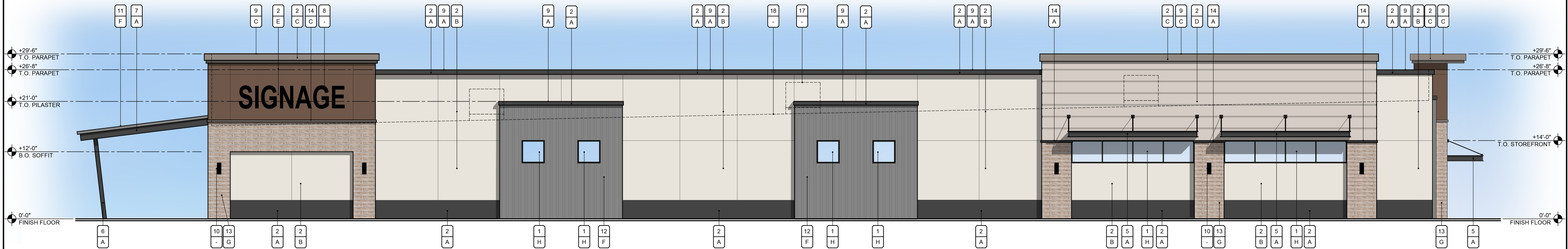
UPWARD
ARCHITECTS

1155 W. Rio Salado Parkway, Suite B-101
Tempe, AZ 85281
Ph 602.753.5222 www.upwardarchitects.com



1 SOUTH ELEVATION
SCALE: 1/8" = 1'-0"

MATERIAL/COLOR SCHEDULE											
COLORS	MATERIALS										
by Sherwin Williams (or Equal): A. SW 7069 - "IRON ORE" B. SW 7003 - "TOQUE WHITE" C. SW 7018 - "DOVETAIL" D. SW 6071 - "POPULAR GRAY"	by Western States Metal Roofing (or Equal): F. "SLATE GRAY"	1. ANODIZED ALUMINUM STOREFRONT FRAME WITH 1" INSULATED LOW-E, CLEAR GLAZING 2. INTEGRAL COLOR E.I.F.S. - FINE SAND TEXTURE 3. HOLLOW METAL DOOR AND FRAME - PAINTED 4. OVERHEAD ROLL-UP DOOR 5. METAL AWNING 6. STEEL COLUMN - PAINTED 7. STEEL BEAM - PAINTED 8. FUTURE TENANT SIGNAGE UNDER SEPARATE PERMIT AND SUBMITTAL 9. 22 GA PRE-FINISHED METAL CAP FLASHING 10. LIGHT FIXTURE - BLACK 11. STANDING SEAM METAL ROOF 12. CORRUGATED METAL 13. REFINED WOOD STONE 14. INTEGRAL COLOR E.I.F.S. CAP - FINE SAND TEXTURE 15. AUTOMATIC SLIDING DOORS 16. GUARDRAIL 17. HVAC EQUIPMENT BEYOND SHOWN DASHED 18. ROOF LINE BEYOND SHOWN DASHED									
by Dunn Edwards (or Equal): E. DE6077 - "DEEP BROWN"	by Coronado Stone (or Equal): G. REFINED WOOD STONE "ANTIQUE WHITE" Aluminum Storefront: H. "DARK BRONZE ANODIZED"										
<table><tr><td>A.</td><td>B.</td><td>C.</td></tr><tr><td>D.</td><td>E.</td><td>F.</td></tr><tr><td>G.</td><td>H.</td><td></td></tr></table>			A.	B.	C.	D.	E.	F.	G.	H.	
A.	B.	C.									
D.	E.	F.									
G.	H.										



2 WEST ELEVATION
SCALE: 1/8" = 1'-0"

Legacy on Porter
Major A Exterior Elevations
NEC Maricopa - Porter Road and Casa Grande Hwy.
City of Maricopa, AZ

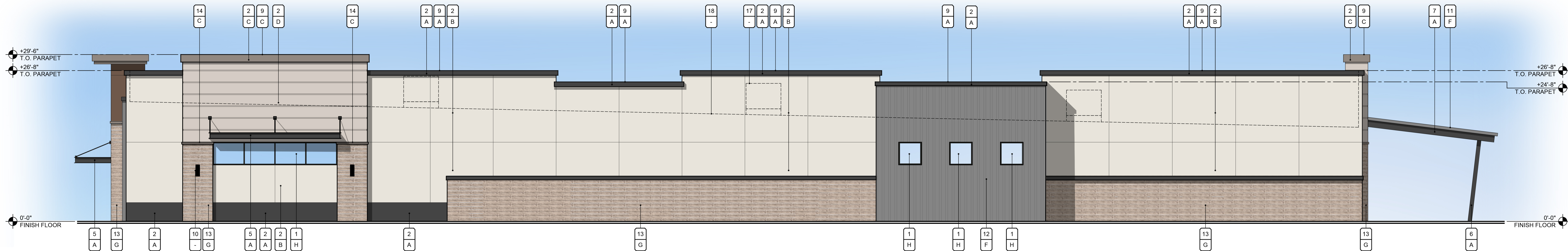
04.08.2025
PROJECT NO. 24112



UPWARD
ARCHITECTS
1155 W. Rio Salado Parkway, Suite B-101
Tempe, AZ 85281
Ph 602.753.5222 www.upwardarchitects.com



3 NORTH ELEVATION
SCALE: 1/8" = 1'-0"



4 EAST ELEVATION
SCALE: 1/8" = 1'-0"

MATERIAL/COLOR SCHEDULE

COLORS

by Sherwin Williams (or Equal):
A. SW 7069 - "IRON ORE"
B. SW 7003 - "TOQUE WHITE"
C. SW 7018 - "DOVETAIL"
D. SW 6071 - "POPULAR GRAY"

by Dunn Edwards (or Equal):
E. DE6077 - "DEEP BROWN"

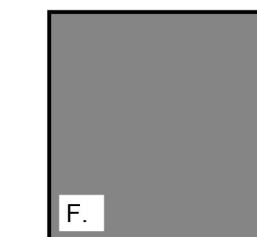
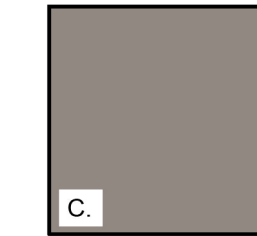
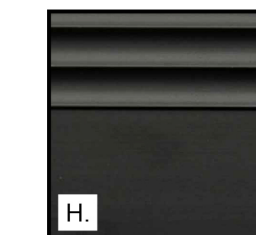
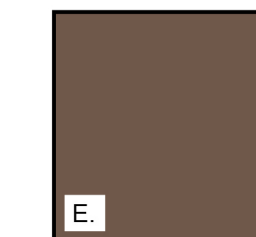
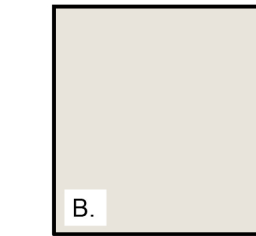
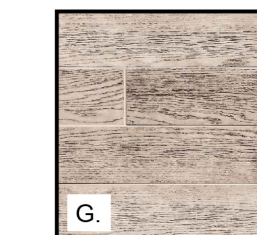
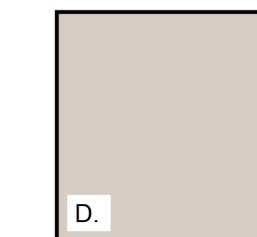
by Western States Metal Roofing (or Equal):
F. "SLATE GRAY"

by Coronado Stone (or Equal):
G. "ANTIQUÉ WHITE"

Aluminum Storefront:
H. "DARK BRONZE ANODIZED"

MATERIALS

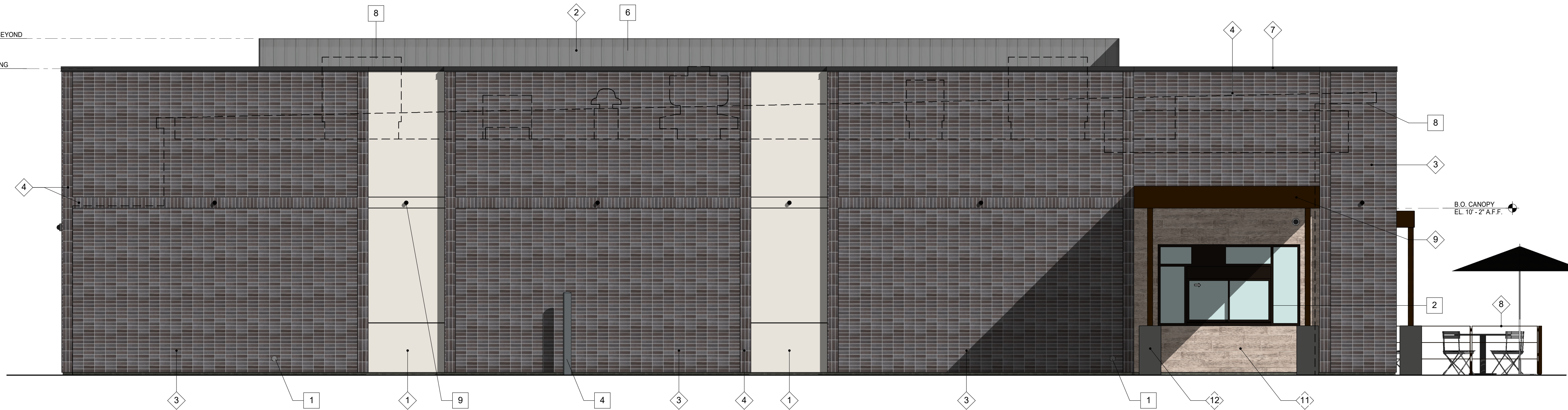
1. ANODIZED ALUMINUM STOREFRONT FRAME WITH 1" INSULATED LOW-E, CLEAR GLAZING
2. INTEGRAL COLOR E.I.F.S. - FINE SAND TEXTURE
3. HOLLOW METAL DOOR AND FRAME - PAINTED
4. OVERHEAD ROLL-UP DOOR
5. METAL AWNING
6. STEEL COLUMN - PAINTED
7. STEEL BEAM - PAINTED
8. FUTURE TENANT SIGNAGE UNDER SEPARATE PERMIT AND SUBMITTAL
9. 22 GA PRE-FINISHED METAL CAP FLASHING
10. LIGHT FIXTURE - BLACK
11. STANDING SEAM METAL ROOF
12. CORRUGATED METAL
13. REFINED WOOD STONE
14. INTEGRAL COLOR E.I.F.S. CAP - FINE SAND TEXTURE
15. AUTOMATIC SLIDING DOORS
16. GUARDRAIL
17. HVAC EQUIPMENT BEYOND SHOWN DASHED
18. ROOF LINE BEYOND SHOWN DASHED



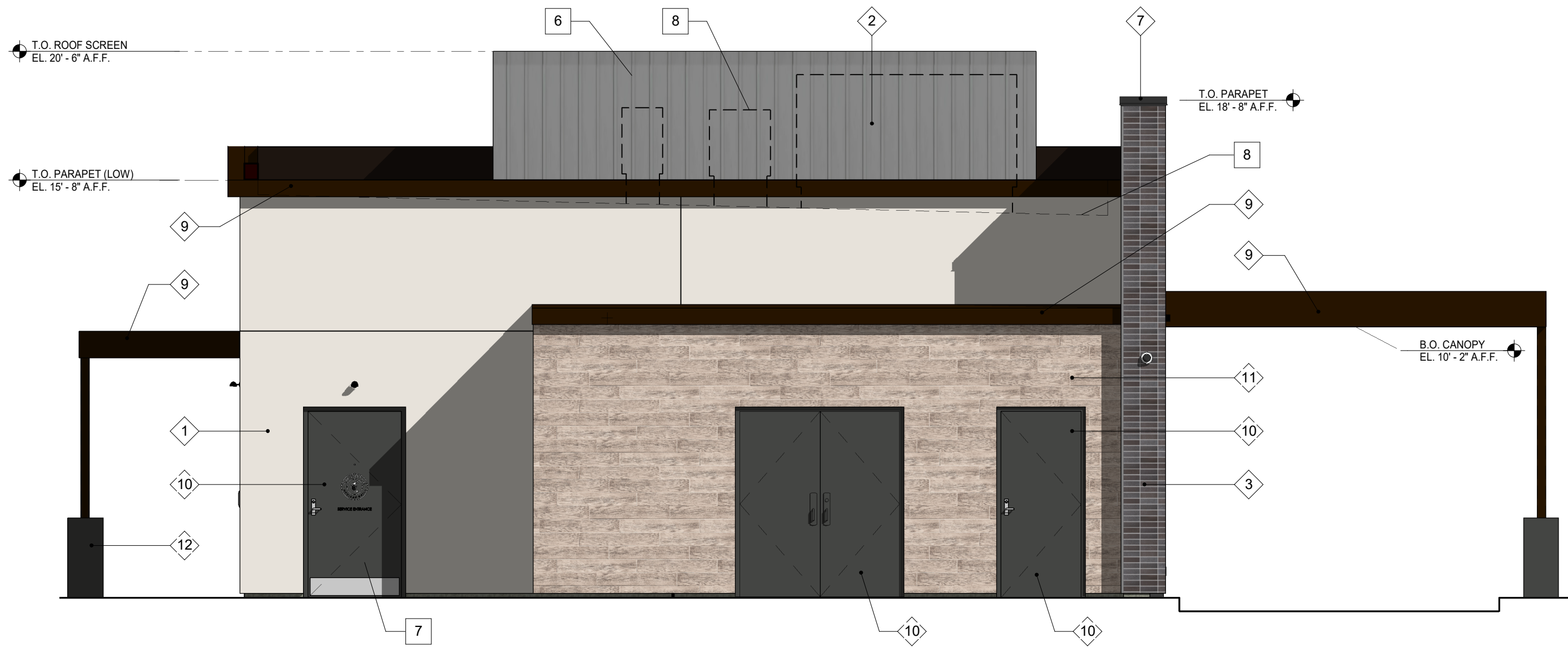
MATERIAL X
FINISH X



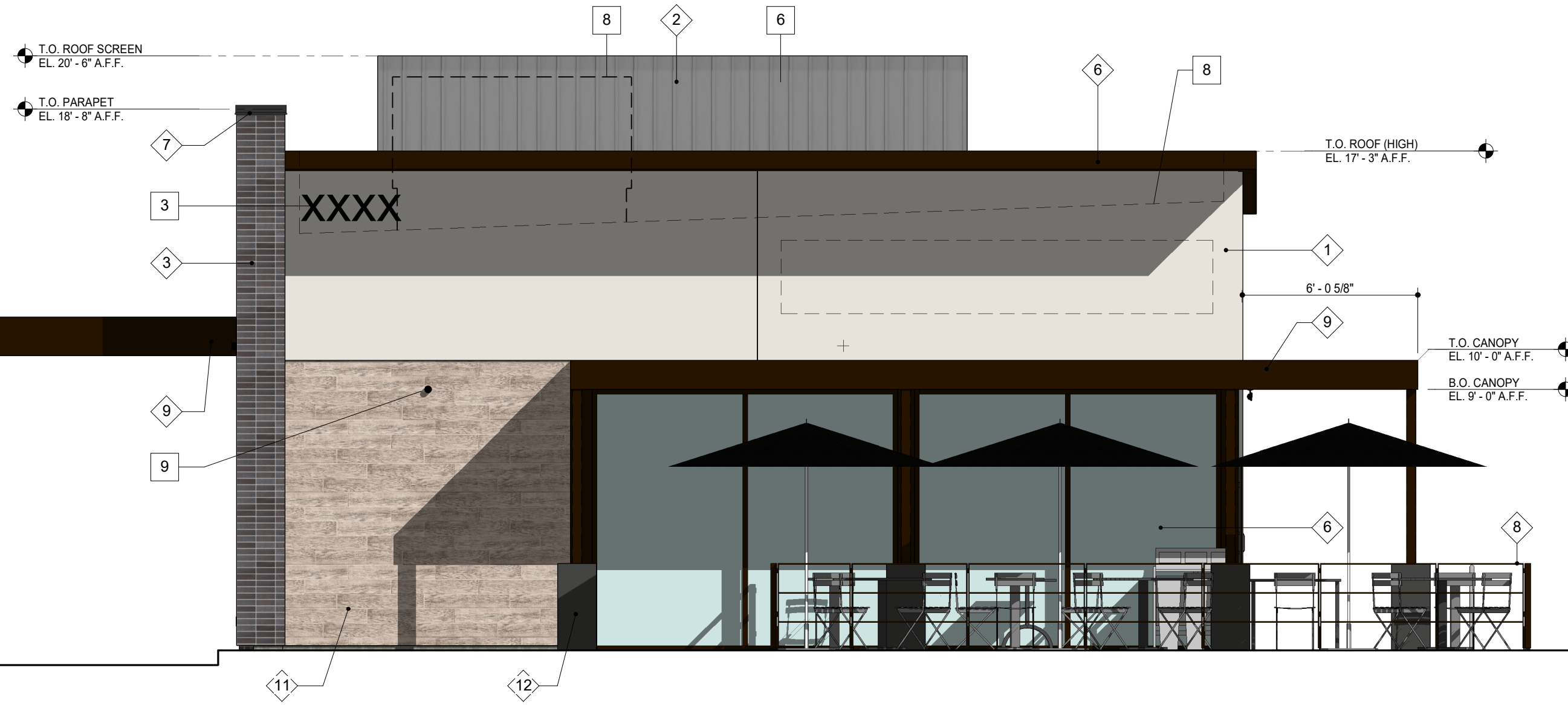
3 SOUTH ELEVATION
1/4" = 1'-0"



2 NORTH ELEVATION
1/4" = 1'-0"



4 EAST ELEVATION
1/4" = 1'-0"



1 WEST ELEVATION
1/4" = 1'-0"

GENERAL NOTES

- SIGNAGE IS SHOWN ONLY FOR PLACEMENT, SCALE & DESIGN INTENT. ALL SIGNAGE SHALL BE REVIEWED UNDER SEPARATE PERMIT.
 - EXTERIOR SIGNAGE PROVIDED BY TSV AND INSTALLED BY TSV. GC TO MAKE FINAL CONNECTION.
 - GC TO ADD REQUIRED BLOCKING FOR SIGNAGE. EXTERIOR SIGNAGE BY TENANT SIGN VENDOR UNDER SEPARATE PERMIT.
 - ENSURE THAT ALL STOREFRONT HAS CONTINUOUS, CLEAN SEALANT AROUND THE INTERIOR AND EXTERIOR PERIMETER BETWEEN THE STOREFRONT AND THE EXTERIOR WALL FINISHES.

COLOR / MATERIAL LEGEND

SYMBOL	ITEM / MATERIAL	MANUFACTURER / COLOR
1	EIFS	SW 7003 - "TOQUE WHITE"
2	CORRUGATED METAL	WESTERN STATES METAL, SLATE GRAY
3	THIN BRICK	ENDICOTT STACK BOND "SIENNA IRONSPOT"
4	THIN BRICK	ENDICOTT VERTICAL STACK BOND "SIENNA IRONSPOT"
5	ALUMINUM STOREFRONT	KAWNEER DARK BRONZE
6	PREFINISHED BREAK METAL	KAWNEER DARK BRONZE
7	PREFINISHED METAL CAP FLASHING	SW 7069 "IRON ORE"
8	RAILING	BLACK
9	METAL CANOPY	ARCHITECTURAL FABRICATIONS DARK BRONZE
10	HOLLOW METAL DOOR & FRAME	SW 7069 "IRON ORE"
11	STONE VENEER	CORONADO STONE REFINED WOODSTONE "ANTIQUE WHITE"
12	CONCRETE COLUMN BASE	INTEGRATED COLOR TO MATCH SW 7069 "IRON ORE"

KEYED NOTES

- STAINLESS STEEL OVERFLOW DOWNSPOUT WITH COVER, RE: PLUMBING DRAWINGS
- DARK BRONZE ALUMINUM PASS-THRU WINDOW WITH INTEGRATED INTERIOR AIR CURTAIN, RE: ELECTRICAL DRAWINGS
- 10" VINYL ADDRESS LETTERS. LOCATION TO BE SPECIFIED BY FIRE MARSHAL
- STEEL BOLLARD, PAINT PER COLOR 10 IN COLOR/MATERIAL LEGEND, RE: CIVIL DRAWINGS
- GAS SERVICE, SEE PLUMBING DRAWINGS FOR ACTUAL LOCATION, PAINT METER & ALL VISIBLE PIPING PER COLOR 1 IN THE COLOR/MATERIAL LEGEND IF ALLOWED BY UTILITY COMPANY
- ROOF SCREEN, TO BE TALLER THAN THE TALLEST PIECE OF EQUIPMENT.
- HOLLOW METAL SERVICE DOOR & FRAME, PAINT PER COLOR 10 IN COLOR/MATERIAL LEGEND
- LINE OF ROOF AND MECHANICAL EQUIPMENT ON THE ROOF.
- WALL SCOFF, RE: ELECTRICAL DRAWINGS

DUNGAN
DESIGN
GROUP

8826 Santa Fe Drive Suite 304
Overland Park, KS 66212
913-341-2466



COPYRIGHT 2025
THIS DRAWING IS AN INSTRUMENT OF SERVICE
AND AS SUCH REMAINS THE PROPERTY OF
CHIPOTLE MEXICAN GRILL, INC. PERMISSION FOR
USE OF THIS DOCUMENT IS LIMITED AND CAN BE
EXTENDED ONLY BY WRITTEN AGREEMENT WITH
CHIPOTLE MEXICAN GRILL, INC.

Legacy on Porter

17547 N. Porter Rd.
City of Maricopa, AZ

Issue Record:

Revisions:

Project No.

01780

Exterior Elevations

A300