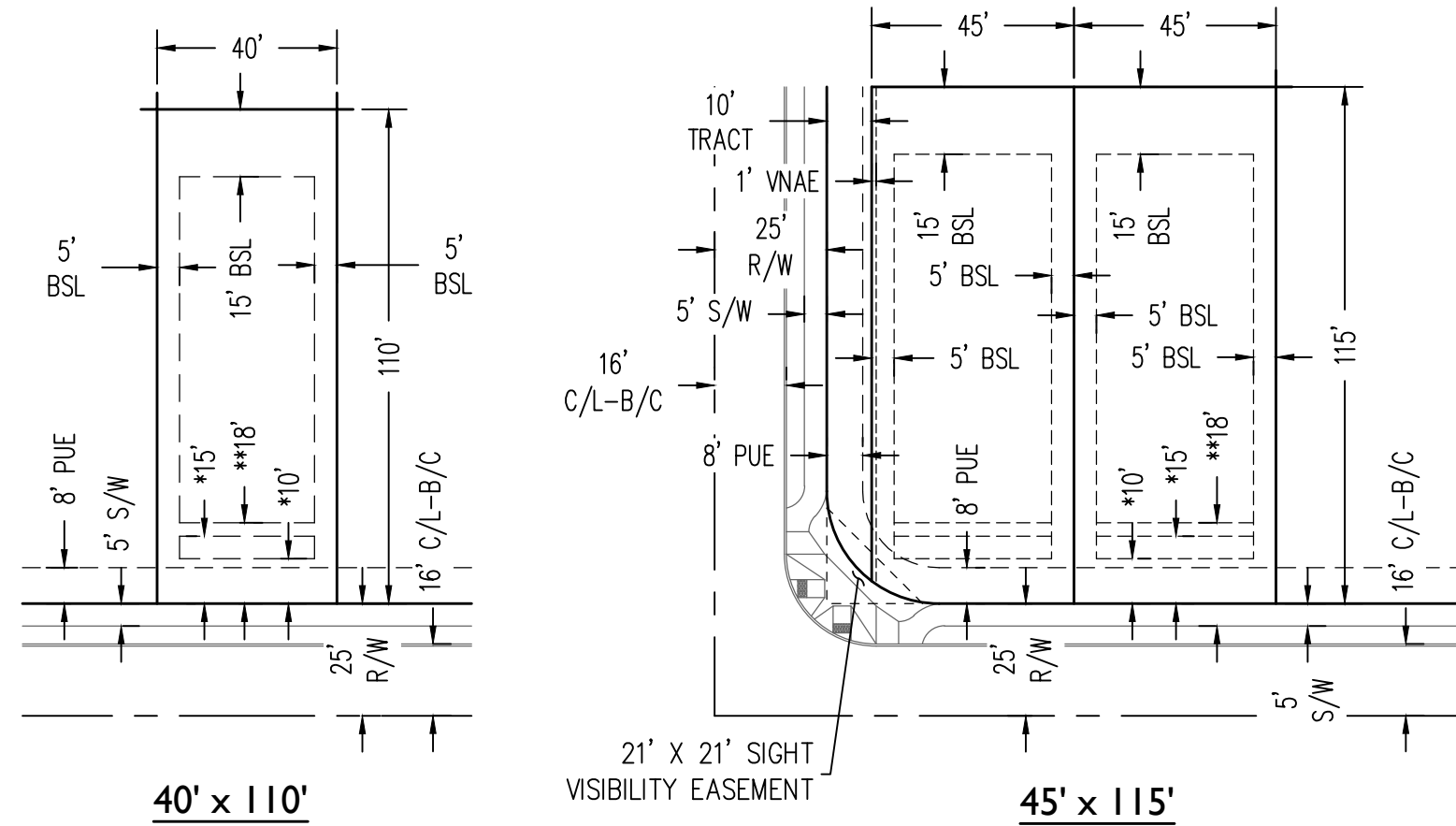


TRACT USE TABLE			
TRACT	USE	AREA (SF)	AREA (AC)
Tract A	LANDSCAPE, OPEN SPACE, RETENTION, WAPA EASEMENT AND PUBLIC UTILITY EASEMENT	282,108	6.4763
Tract B	LANDSCAPE, OPEN SPACE AND PUBLIC UTILITY EASEMENT	21,295	0.4889
Tract C	LANDSCAPE, OPEN SPACE, RETENTION, ACCESSIBLE OPEN SPACE AND PUBLIC UTILITY EASEMENT	51,114	1.1734
Tract D	LANDSCAPE, OPEN SPACE, RETENTION AND PUBLIC UTILITY EASEMENT	43,662	1.0023
Tract E	LANDSCAPE, OPEN SPACE AND PUBLIC UTILITY EASEMENT	1,103	0.0253
Tract F	LANDSCAPE, OPEN SPACE AND PUBLIC UTILITY EASEMENT	1,103	0.0253
Tract G	LANDSCAPE, OPEN SPACE AND PUBLIC UTILITY EASEMENT	1,051	0.0241
Tract H	LANDSCAPE, OPEN SPACE, RETENTION, AMENITY AND PUBLIC UTILITY EASEMENT	75,043	1.7227
Tract I	LANDSCAPE AND MEDIAN	3,632	0.0834

LINE TABLE			LINE TABLE			LINE TABLE		
LINE	BEARING	LENGTH	LINE	BEARING	LENGTH	LINE	BEARING	LENGTH
L1	S00°01'46"W	55.00'	L22	N71°39'59"W	41.16'	L43	N80°19'59"W	39.10'
L2	S00°00'00"E	19.96'	L23	S86°18'04"W	60.01'	L44	N83°27'10"W	36.95'
L3	S00°00'00"E	45.45'	L24	N18°19'30"W	60.01'	L45	N86°26'01"W	39.92'
L4	S01°54'48"W	38.15'	L25	N18°14'21"W	29.57'	L46	N86°26'01"W	40.00'
L5	S05°29'53"W	43.99'	L26	N21°45'22"W	48.64'	L47	N89°51'49"W	24.02'
L6	S09°20'49"W	43.99'	L27	N25°35'40"W	39.10'	L48	N28°07'17"W	37.71'
L7	S13°09'41"W	43.21'	L28	N29°00'57"W	39.10'	L49	S51°31'32"E	25.55'
L8	S18°06'53"W	70.00'	L29	N32°26'13"W	39.10'	L50	S51°31'32"E	43.52'
L9	S23°06'08"W	43.99'	L30	N35°51'29"W	39.10'	L51	N53°17'29"E	54.63'
L10	S26°57'04"W	43.99'	L31	N39°16'45"W	39.10'	L52	N53°17'29"E	27.34'
L11	S30°48'00"W	43.99'	L32	N42°42'01"W	39.10'	L53	N90°00'00"E	40.00'
L12	S34°38'57"W	43.99'	L33	N46°07'17"W	39.10'	L54	N90°00'00"E	40.00'
L13	S38°29'53"W	43.99'	L34	N49°32'34"W	39.10'	L55	N90°00'00"E	40.00'
L14	S42°20'49"W	43.99'	L35	N52°57'50"W	39.10'	L56	N90°00'00"E	40.00'
L15	S46°11'45"W	43.99'	L36	N56°23'06"W	39.10'	L57	N90°00'00"E	40.00'
L16	S49°09'18"W	23.66'	L37	N59°48'22"W	39.10'	L58	N42°53'09"W	18.98'
L17	S57°49'34"W	51.10'	L38	N63°13'38"W	39.10'	L59	N03°33'59"E	25.00'
L18	S53°17'29"W	104.04'	L39	N66°38'54"W	39.10'	L60	N86°26'01"W	22.94'
L19	S36°42'31"E	119.76'	L40	N70°04'10"W	39.10'	L61	N36°42'31"W	10.00'
L20	S83°35'28"E	22.28'	L41	N73°29'27"W	39.10'	L62	S18°06'53"W	10.00'
L21	S30°35'01"E	84.63'	L42	N76°54'43"W	39.10'	L63	S18°06'53"W	10.00'

(DEVELOPMENT STANDARDS RS-5)
TYPICAL LOT
NOT TO SCALE



NOTES:

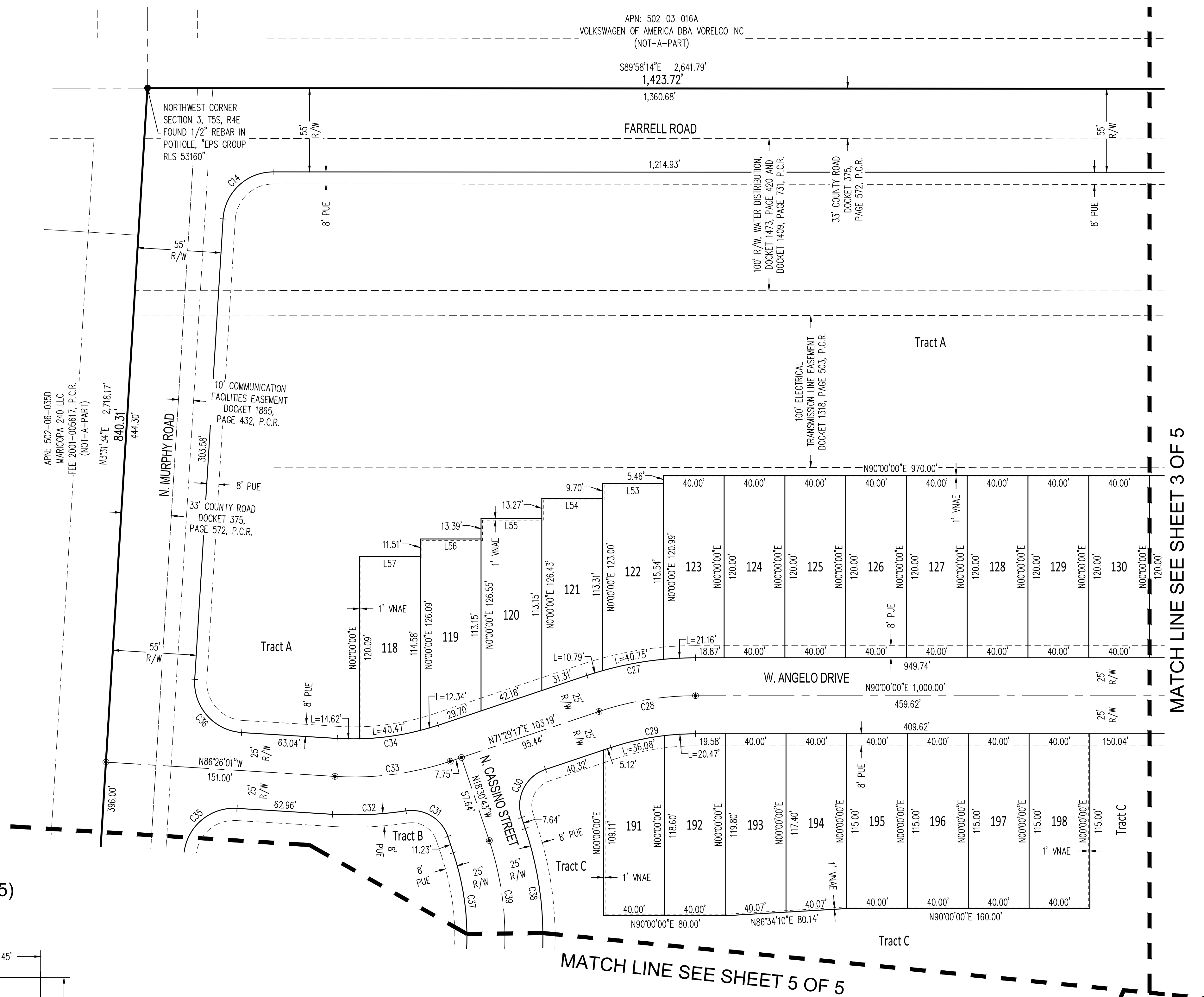
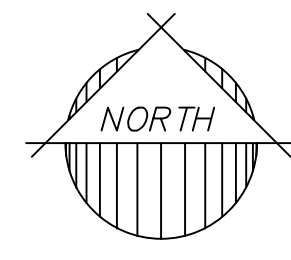
- * FOR RS-5 DISTRICTS, LIVEABLE AREAS AND SIDE ENTRY GARAGES MAY HAVE A MINIMUM SETBACK OF 10 FEET FROM THE PROPERTY LINE.
- ** FOR RS-5 DISTRICTS, STREET FACING GARAGE ENTRANCES SHALL BE NO LESS THAN A DISTANCE OF 18 FEET TO THE NEAREST SIDEWALK OR TO THE BACK OF CURB, WHEN A SIDEWALK IS NOT PROVIDED.

LEGEND

- FOUND SECTION CORNER (AS NOTED)
- FOUND MONUMENT (AS NOTED)
- SUBDIVISION CORNER, SET 1/2" REBAR W/ CAP (LS 53160) UNLESS OTHERWISE NOTED
- CENTERLINE MONUMENT TO BE SET UPON COMPLETION OF CONSTRUCTION
- P.C.R. PINAL COUNTY RECORDS
- APN: ASSESSORS PARCEL NUMBER
- PUE PUBLIC UTILITIES EASEMENT
- R/W RIGHT-OF-WAY
- VNAE VEHICULAR NON-ACCESS EASEMENT

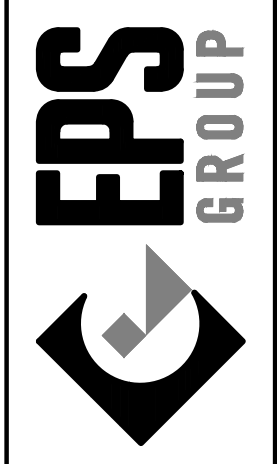
SIGHT VISIBILITY TRIANGLE EASEMENT
NOT TO SCALE

- *A = 21' X 21' FOR LOCAL INTERSECTION
- *B = 33' X 33' FOR INTERSECTIONS WITH COLLECTOR TO COLLECTOR AND COLLECTOR TO ARTERIAL ROADS



Oct 18, 2023 2:52pm C:\Users\agross\appdata\local\Temp\MapPublish_122448\21-0389 - Phase 2 - Plat.dwg

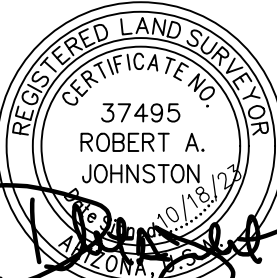
1130 N. Alma School Rd, Suite 120
Mesa, AZ 85201
T:480.503.2350 | F:480.835.1799
www.epsgroupinc.com



"Elena Trails Phase 2"
Final Plat

Revisions:	

Drawn by: A.G.
Reviewed by: R.J.

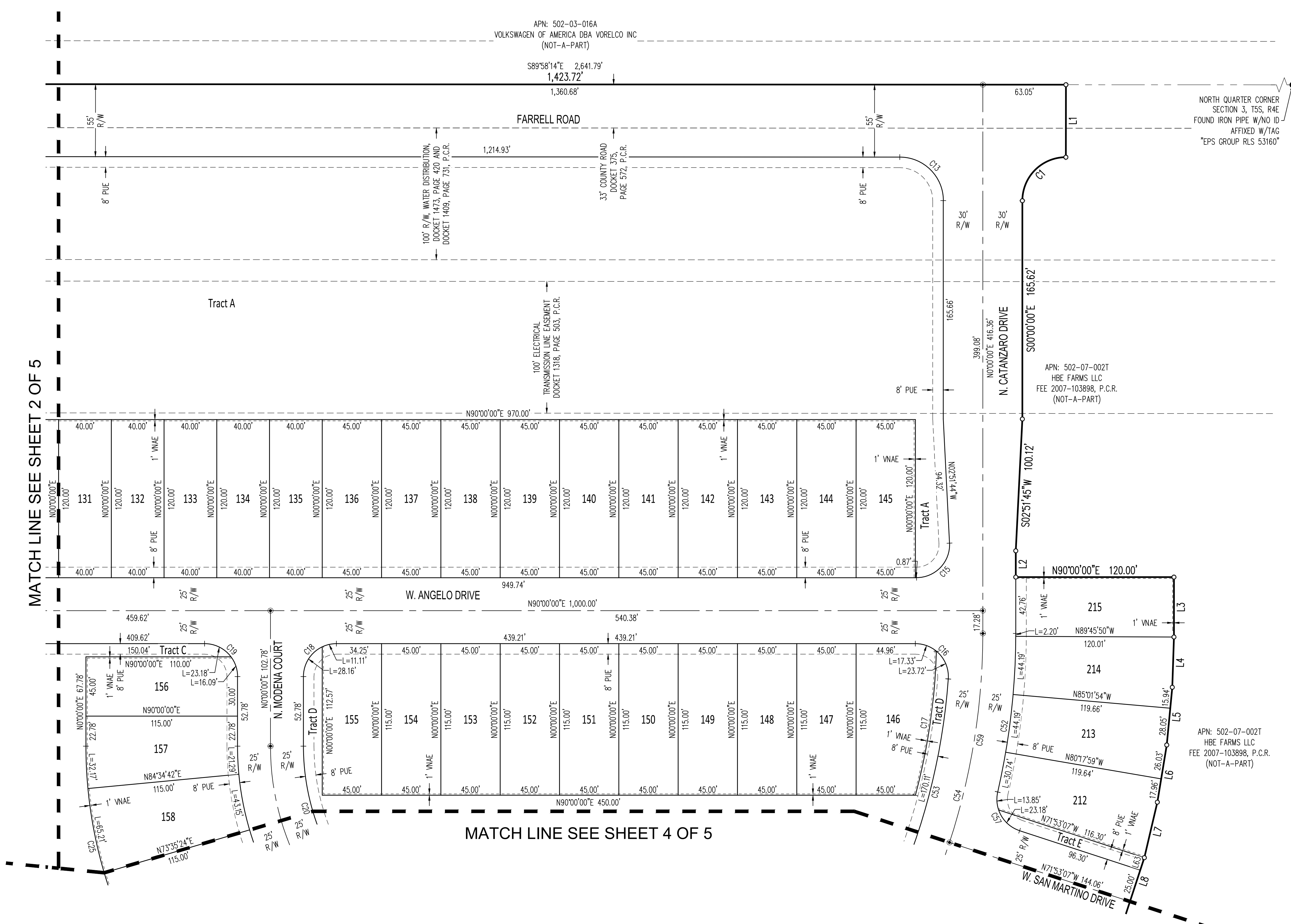


Job No.
21-0389

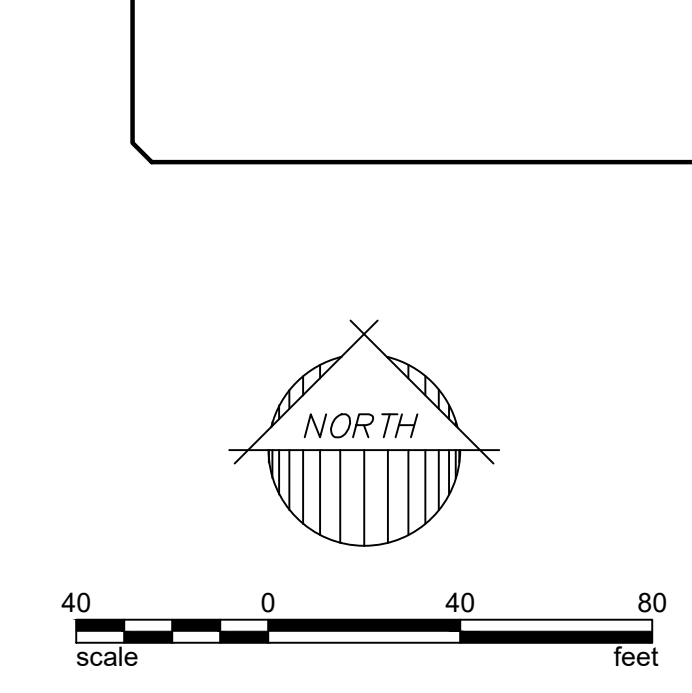
Sheet No.
2 of 5

C:\Users\agross\appdata\local\temp\appdata\local\temp\Publsh_122449\21-0389 - Phase 2 - Plat.dwg

MATCH LINE SEE SHEET 2 OF 5



MATCH LINE SEE SHEET 4 OF 5



LEGEND

- FOUND SECTION CORNER (AS NOTED)
- FOUND MONUMENT (AS NOTED)
- SUBDIVISION CORNER, SET 1/2" REBAR W/ CAP (LS 53160) UNLESS OTHERWISE NOTED
- CENTERLINE MONUMENT TO BE SET UPON COMPLETION OF CONSTRUCTION
- P.C.R. PINAL COUNTY RECORDS
- APN: ASSESSORS PARCEL NUMBER
- PUE PUBLIC UTILITIES EASEMENT
- R/W RIGHT-OF-WAY
- VNAE VEHICULAR NON-ACCESS EASEMENT

LOT AREA TABLE			LOT AREA TABLE			LOT AREA TABLE			LOT AREA TABLE			LOT AREA TABLE			LOT AREA TABLE			LOT AREA TABLE			LOT AREA TABLE			LOT AREA TABLE			LOT AREA TABLE			LOT AREA TABLE			LOT AREA TABLE			LOT AREA TABLE			LOT AREA TABLE			LOT AREA TABLE			LOT AREA TABLE		
LOT #	AREA (SF)	AREA (AC)	LOT #	AREA (SF)	AREA (AC)	LOT #	AREA (SF)	AREA (AC)	LOT #	AREA (SF)	AREA (AC)	LOT #	AREA (SF)	AREA (AC)	LOT #	AREA (SF)	AREA (AC)	LOT #	AREA (SF)	AREA (AC)	LOT #	AREA (SF)	AREA (AC)	LOT #	AREA (SF)	AREA (AC)	LOT #	AREA (SF)	AREA (AC)	LOT #	AREA (SF)	AREA (AC)	LOT #	AREA (SF)	AREA (AC)	LOT #	AREA (SF)	AREA (AC)	LOT #	AREA (SF)	AREA (AC)						
88	5,129	0.1177	98	5,131	0.1178	108	4,891	0.1123	118	4,725	0.1085	128	4,800	0.1102	138	5,400	0.1240	148	5,175	0.1188	158	6,231	0.1430	168	5,750	0.1320	178	4,866	0.1117	188	4,862	0.1116	198	4,600	0.1056	208	5,885	0.1351									
89	5,136	0.1179	99	5,131	0.1178	109	4,800	0.1102	119	4,792	0.1100	129	4,800	0.1102	139	5,400	0.1240	149	5,175	0.1188	159	6,231	0.1430	169	5,373	0.1233	179	4,956	0.1138	189	4,862	0.1116	199	5,175	0.1188	209	5,883	0.1351									
90	5,131	0.1178	100	5,131	0.1178	110	4,800	0.1102	120	4,794	0.1101	130	4,800	0.1102	140	5,400	0.1240	150	5,175	0.1188	160	6,281	0.1442	170	5,175	0.1188	180	5,445	0.1250	190	4,688	0.1076	200	5,175	0.1188	210	5,883	0.1350									
91	5,131	0.1178	101	5,131	0.1178	111	4,800	0.1102	121	4,790	0.1100	131	4,800	0.1102	141	5,400	0.1240	151	5,175	0.1188	161	6,574	0.1509	171	5,175	0.1188	181	4,862	0.1116	191	4,586	0.1053	201	5,175	0.1188	211	6,253	0.1435									
92	5,131	0.1178	102	5,131	0.1178	112	4,800	0.1102	122	4,746	0.1089	132	4,800	0.1102	142	5,400	0.1240	152	5,175	0.1188	162	12,072	0.2771	172	5,175	0.1188	182	4,862	0.1116	192	4,784	0.1098	202	5,175	0.1188	212	6,253	0.1435									
93	5,131	0.1178	103	5,131	0.1178	113	4,859	0.1116	123	4,807	0.1104	133	4,800	0.1102	143	5,400	0.1240	153	5,175	0.1188	163	8,864	0.2035	173	5,607	0.1287	183	4,862	0.1116	193	4,744	0.1089	203	5,175	0.1188	213	5,883	0.1350									
94	5,131	0.1178	104	5,131	0.1178	114	4,646	0.1067	124	4,800	0.1102	134	4,800	0.1102	144	5,400	0.1240	154	5,175	0.1188	164	5,653	0.1298	174	5,078	0.1166	184	4,862	0.1116	194	4,648	0.1067	204	5,175	0.1188	214	5,887	0.1351									
95	5,131	0.1178	105	5,131	0.1178	115	4,450	0.1022	125	4,800	0.1102	135	4,800	0.1102	145	5,400	0.1240	155	5,166	0.1186	165	5,750	0.1320	175	4,866	0.1117	185	4,862	0.1116	195	4,600	0.1056	205	5,585	0.1282	215	5,425	0.1245									
96	5,131	0.1178	106	5,131	0.1178	116	4,819	0.1106	126	4,800	0.1102	136	5,400	0.1240	146	6,345	0.1457	156	5,151	0.1183	166	5,750	0.1320	176	4,875	0.1119	186	4,862	0.1116	196	4,600	0.1056	206	5,887	0.1351												
97	5,131	0.1178	107	5,127	0.1177	117	4,776	0.1096	127	4,800	0.1102	137	5,400	0.1240	147	5,175	0.1188	157	5,694	0.1307	167	5,750	0.1320	177	4,866	0.1117	187	4,862	0.1116	197	4,600	0.1056	207	5,884	0.1351												

1130 N. Alma School Rd, Suite 120
Mesa, AZ 85201
T:480.503.2250 | F:480.835.1799
www.epsgroupinc.com

EPS GROUP

"Elena Trails Phase I"
Final Plat

Project: _____
Revisions: _____

Drawn by: A.G.
Reviewed by: R.J.

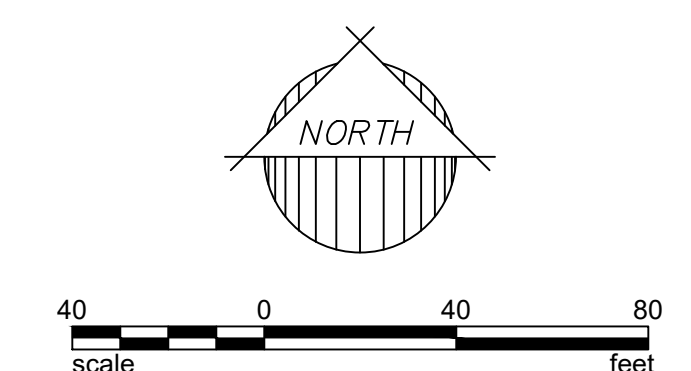
REGISTERED LAND SURVEYOR
37495
ROBERT A. JOHNSTON
AZ 14321

Job No.
21-0389

Sheet No.
3
of 5

Oct 18, 2023 2:52pm C:\Users\agross\appdata\local\Temp\ApPublish_12248\21-0389 - Phase 2 - Plat.dwg

MATCH LINE SEE SHEET 3 OF 5



LEGEND

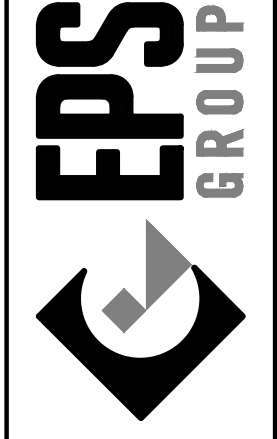
- Found Section Corner (AS NOTED)
Found Monument (AS NOTED)
Subdivision Corner, Set 1/2" Rebar w/ Cap (LS 53160) Unless Otherwise Noted
Centerline Monument to be Set Upon Completion of Construction
P.C.R. PINAL COUNTY RECORDS
APN: ASSESSORS PARCEL NUMBER
PUE PUBLIC UTILITIES EASEMENT
R/W RIGHT-OF-WAY
VNAE VEHICULAR NON-ACCESS EASEMENT

CURVE TABLE with columns: CURVE, LENGTH, RADIUS, DELTA, CHORD, CHORD BRG. Lists curves C1 through C23.

CURVE TABLE with columns: CURVE, LENGTH, RADIUS, DELTA, CHORD, CHORD BRG. Lists curves C24 through C46.

CURVE TABLE with columns: CURVE, LENGTH, RADIUS, DELTA, CHORD, CHORD BRG. Lists curves C47 through C68.

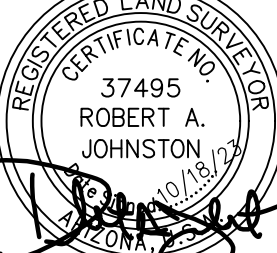
1130 N. Alma School Rd, Suite 120
Mesa, AZ 85201
T:480.503.2260 | F:480.835.1799
www.epsgroupinc.com



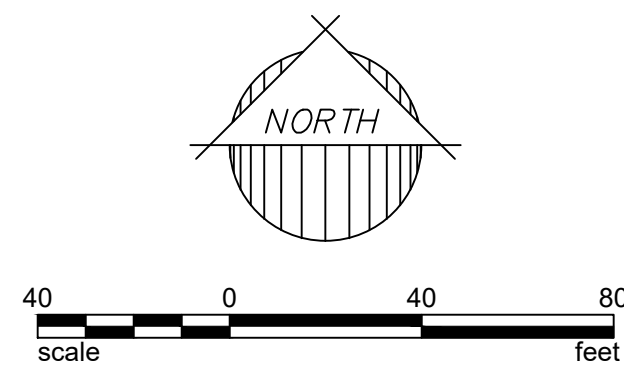
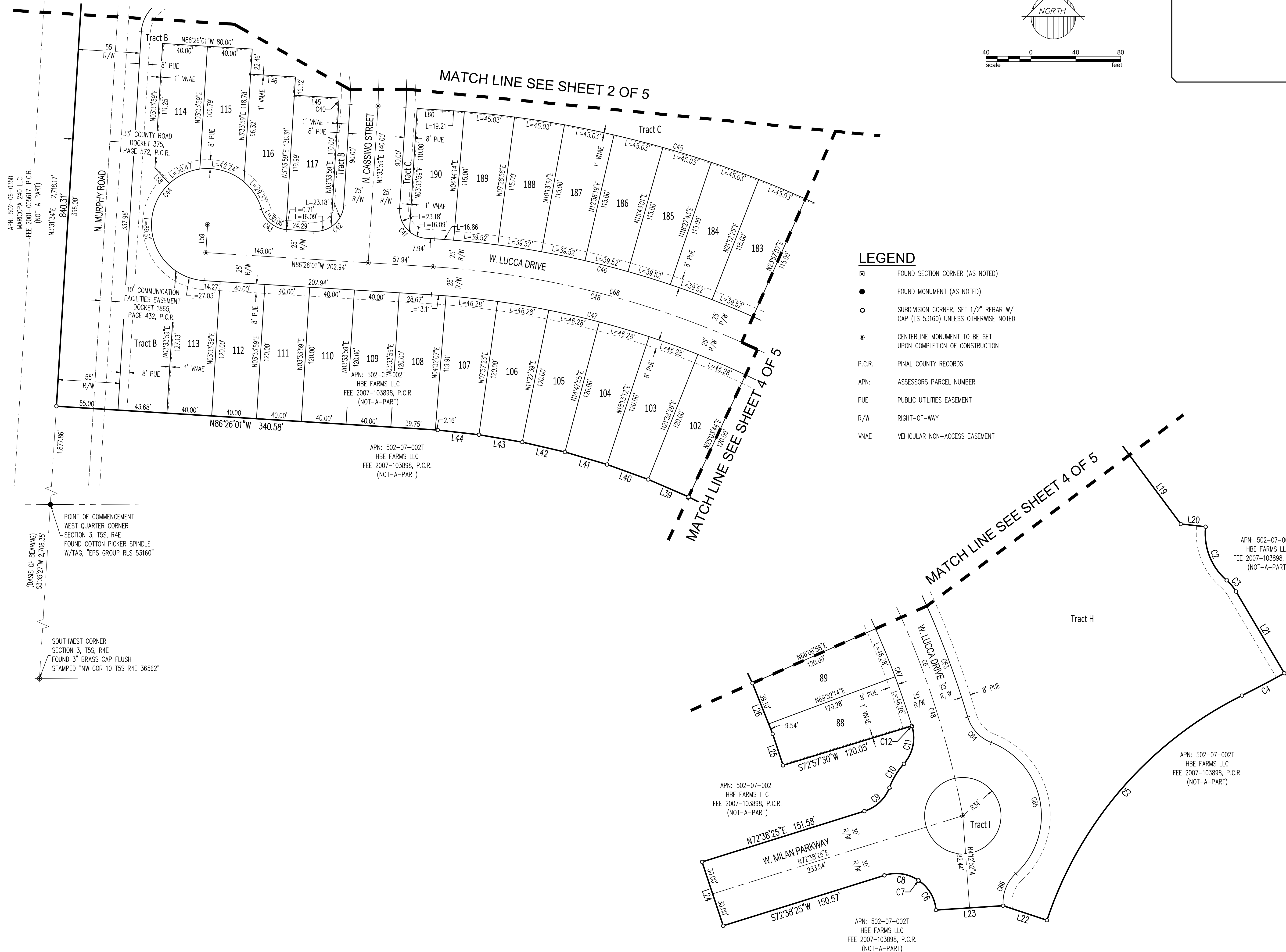
"Elena Trails Phase I"
Final Plat

Revisions table with columns for revision number, description, and date.

Drawn by: A.G.
Reviewed by: R.J.



Job No. 21-0389



- LEGEND**
- FOUND SECTION CORNER (AS NOTED)
 - FOUND MONUMENT (AS NOTED)
 - SUBDIVISION CORNER, SET 1/2" REBAR W/ CAP (LS 53160) UNLESS OTHERWISE NOTED
 - ⊙ CENTERLINE MONUMENT TO BE SET UPON COMPLETION OF CONSTRUCTION
 - P.C.R. PINAL COUNTY RECORDS
 - APN: ASSESSORS PARCEL NUMBER
 - PUE PUBLIC UTILITIES EASEMENT
 - R/W RIGHT-OF-WAY
 - VNAE VEHICULAR NON-ACCESS EASEMENT

POINT OF COMMENCEMENT
WEST QUARTER CORNER
SECTION 3, T5S, R4E
FOUND COTTON PICKER SPINDLE
W/ TAG, *EPS GROUP RLS 53160*

SOUTHWEST CORNER
SECTION 3, T5S, R4E
FOUND 3" BRASS CAP FLUSH
STAMPED "NW COR 10 T5S R4E 36562"

1130 N. Alma School Rd, Suite 120
Mesa, AZ 85201
T:480.503.2350 | F:480.531.1799
www.epsgroupinc.com

EPS GROUP

"Elena Trails Phase I"
Final Plat

Project:

Revisions:

Drawn by: A.G.
Reviewed by: R.J.

REGISTERED LAND SURVEYOR
37495
ROBERT A. JOHNSTON
AZ 2018-000103

Job No.
21-0389

Sheet No.
5 of 5