

Exhibit E - Elevations



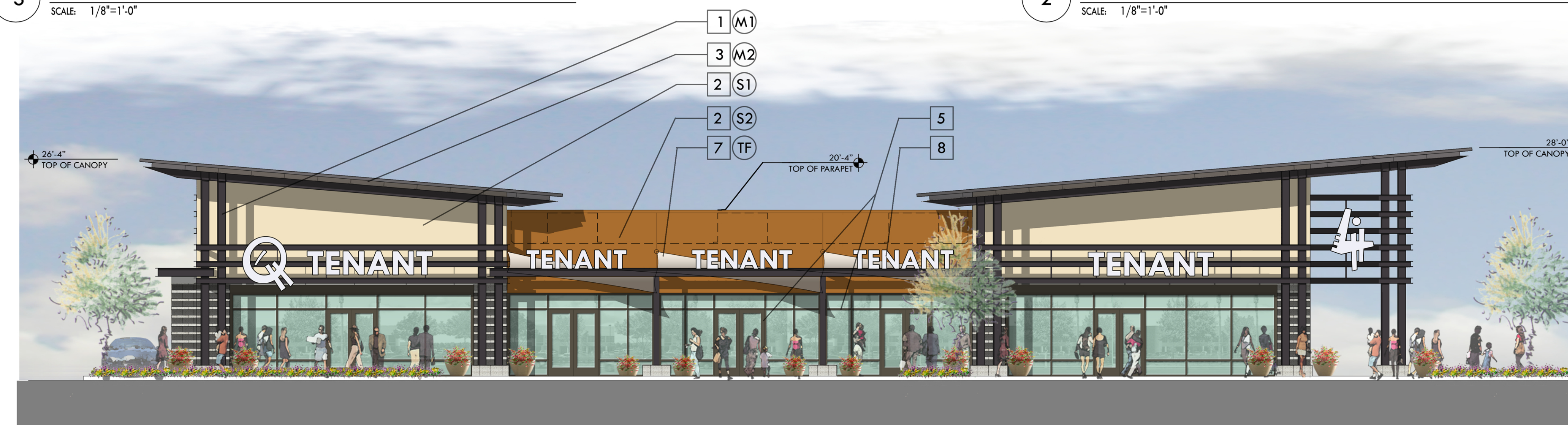
3 South Elevation

SCALE: 1/8"=1'-0"



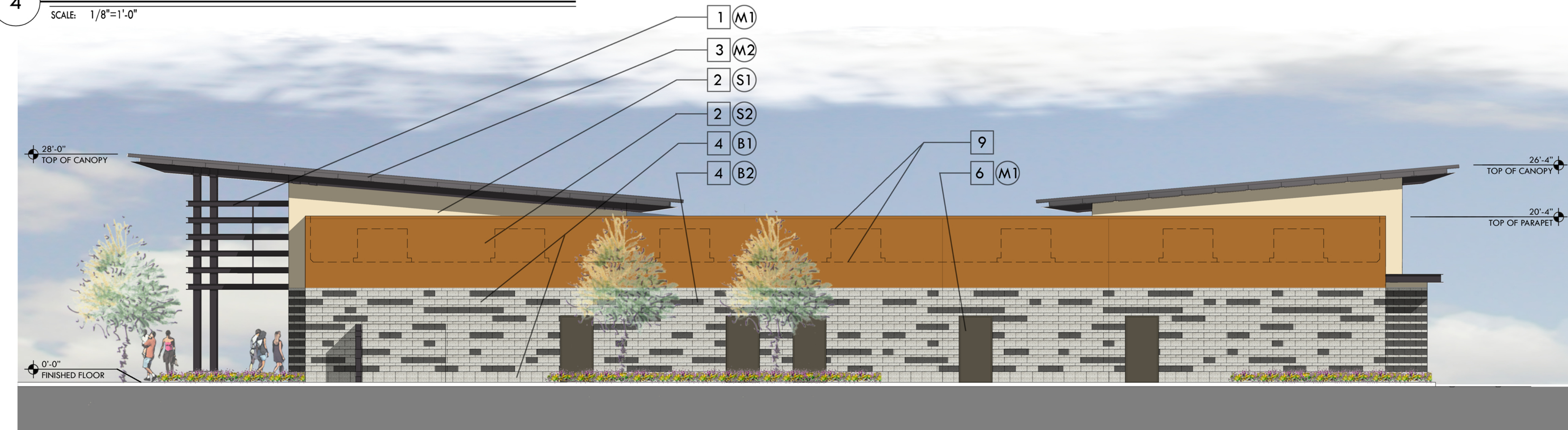
2 North Elevation

SCALE: 1/8"=1'-0"



4 West Elevation

SCALE: 1/8"=1'-0"



5 East Elevation

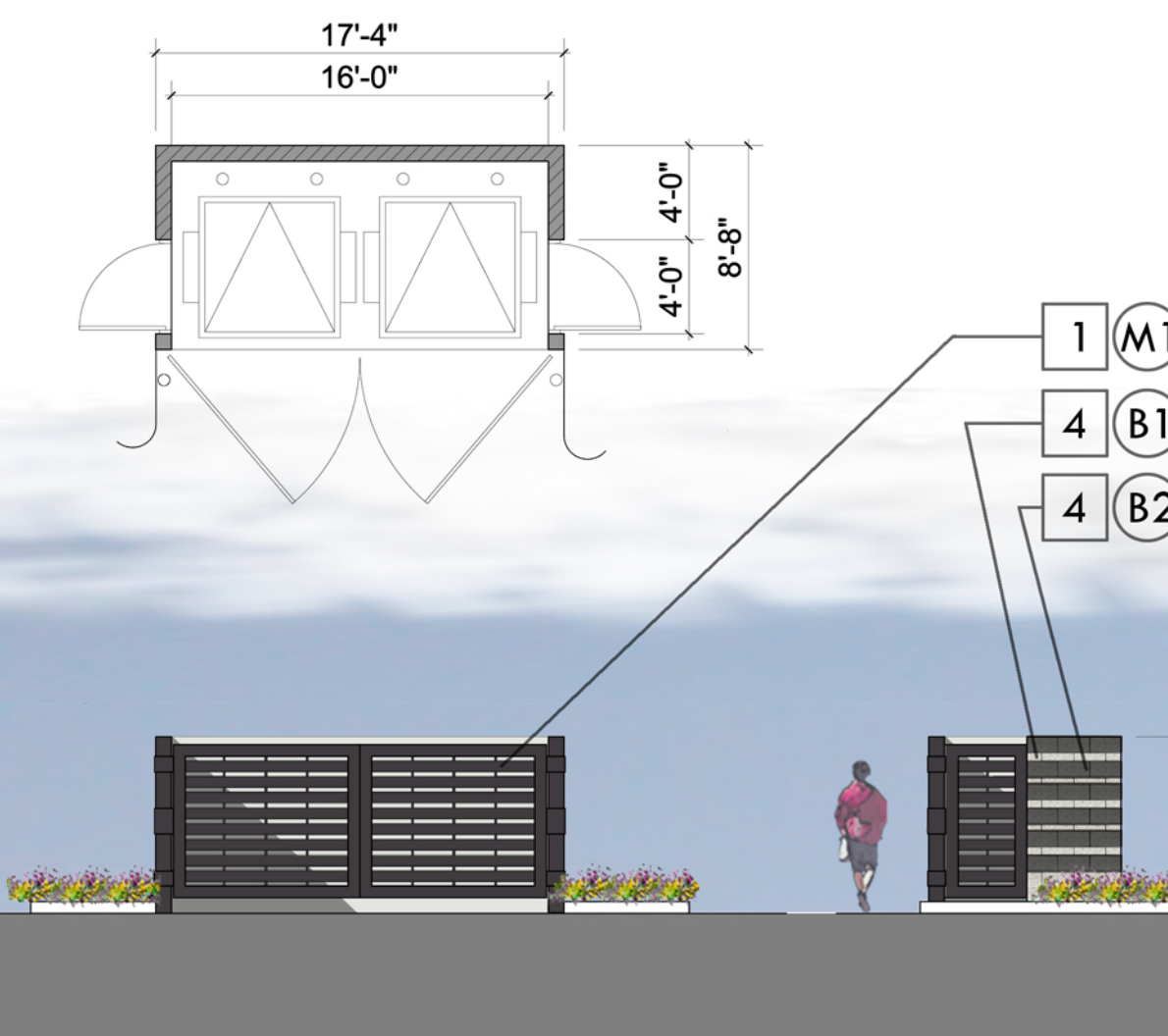
SCALE: 1/8"=1'-0"

Keynotes

1. Painted steel channels and wide flange columns
2. Colored synthetic stucco wall finish
3. Pre-finished metal roofing and fascia
4. Exposed CMU, stain finish
5. Aluminum storefront system - dark bronze finish
6. Hollow metal door and frame
7. Tensioned fabric shades - UV resistant material - natural
8. Tenant signage per separate permit
9. Roofline beyond with approximate mechanical equip. locations



Material and Color Samples



1 Trash Enclosure, Typ

SCALE: 1/4"=1'-0"



MARICOPA STATION
Maricopa, Arizona

Date: April 30, 2014

Revisions:

This drawing is not to be used or reproduced without the consent of Suite 6 Architecture + Planning, Inc. The designs, images, and concepts on this drawing are the property of Suite 6 Architecture + Planning, Inc.

PROGRESS PRINT
NOT FOR
CONSTRUCTION

Preliminary Elevations

Sheet **A3.0**



SOUTHWEST ELEVATION

KEY NOTES:

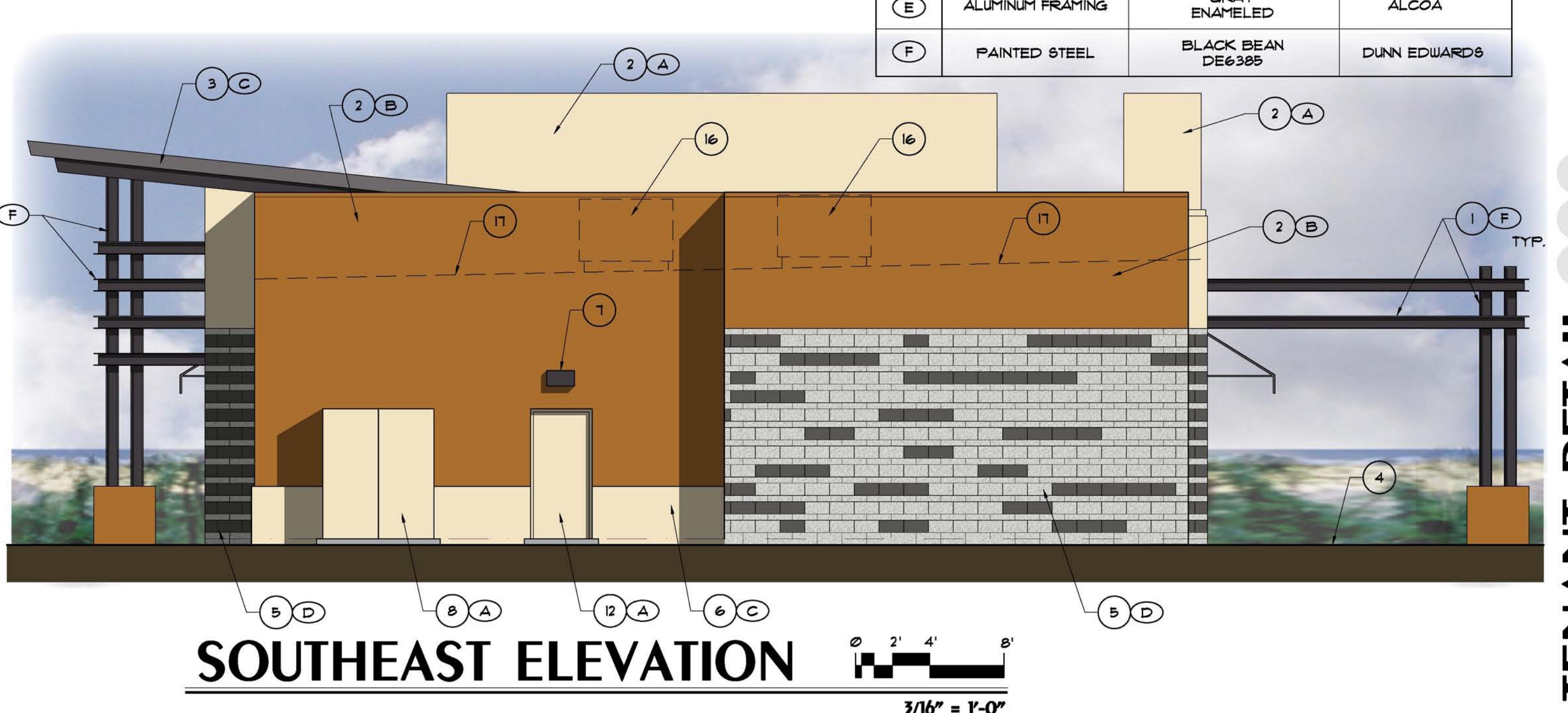
1. PAINTED STEEL CHANNELS AND WIDE-FLANGE COLUMNS AS FRAMES
2. COLORED E.I.F.S. STUCCO WALL FINISH
3. PREFINISHED METAL ROOFING AND FASCIA
4. FINISH GRADE
5. CMU VENEER WAINSCOT TO GRADE
6. 2x FURRING WAINSCOT WITH STUCCO FINISH
7. LIGHT FIXTURE - WHITE ENAMELED FINISH
8. ELECTRICAL SERVICE ENTRANCE SECTION - PAINT TO MATCH WALL
9. CONCRETE SIDEWALK
10. ADDRESS NUMBERS - 12" HIGH, BLACK METAL, 2' STROKE C.O.M. DET. FPD905.1
11. STOREFRONT SYSTEM
12. HOLLOW METAL DOOR - PAINT TO MATCH WALL
13. TENANT SIGN BACKLIT PER SEPARATE PERMIT
14. PREFINISHED METAL SOFFIT
15. VINYL FABRIC OVER METAL FRAMED AWNING
16. ALL ROOF MOUNTED EQUIPMENT SHALL BE SCREENED BY ROOF PARAPET
17. APPROXIMATE ROOF LINE BEHIND PARAPET

MATERIAL AND COLOR SCHEDULE

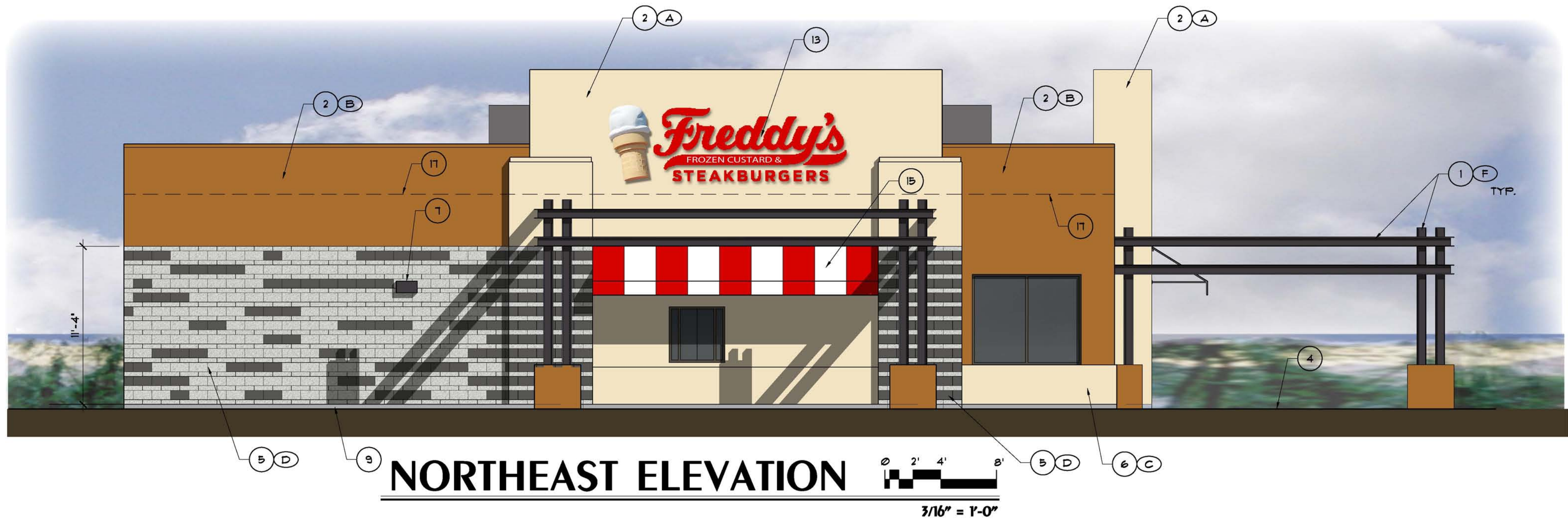
| SYMBOL | MATERIAL | COLOR | MANUFACTURER |
|--------|-------------------------------------|--|--------------|
| (A) | PAINTED E.I.F.S. STUCCO | BURNISHED CREAM DE5365 | DUNN EDWARDS |
| (B) | PAINTED E.I.F.S. STUCCO | SEDONA AT SUNSET DE5212 | DUNN EDWARDS |
| (C) | PRE-FINISHED METAL ROOFING/FASCIA | LOOKING GLASS DE6316 | DUNN EDWARDS |
| (D) | PAINTED CMU MATCH PATTERNS AS SHOWN | ASH GRAY DECTB1 WEATHERED BROWN DECTB6 | DUNN EDWARDS |
| (E) | ALUMINUM FRAMING | GRAY ENAMELED | ALCOA |
| (F) | PAINTED STEEL | BLACK BEAN DE6385 | DUNN EDWARDS |



NORTHWEST ELEVATION



SOUTHEAST ELEVATION



NORTHEAST ELEVATION