



U.S. Department of the Interior
Bureau of Land Management

Lower Sonoran Field Office





Travel Management

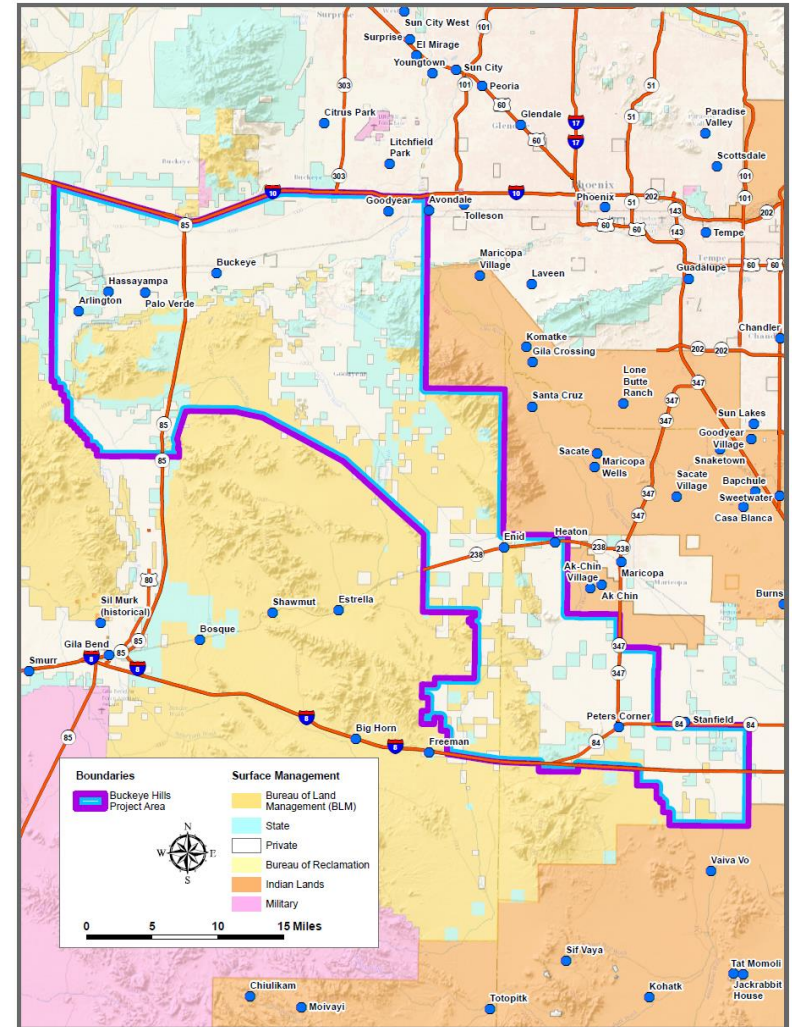
Buckeye Hills / Rainbow Valley Area

Complete

- Public meetings held
- Route Evaluations
- Develop Draft Environmental Assessment

Next Steps

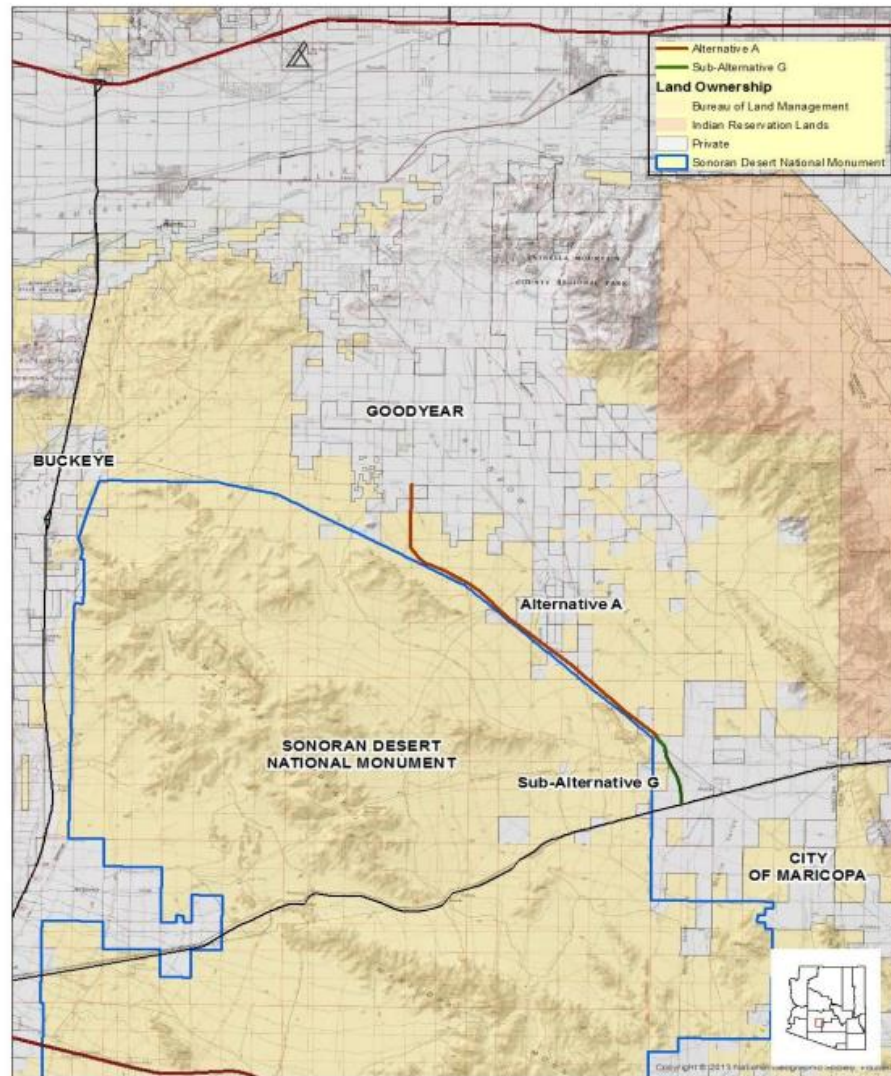
- Develop Final Environmental Assessment
- Issue decision
- Implement plan





Sonoran Valley Parkway Project

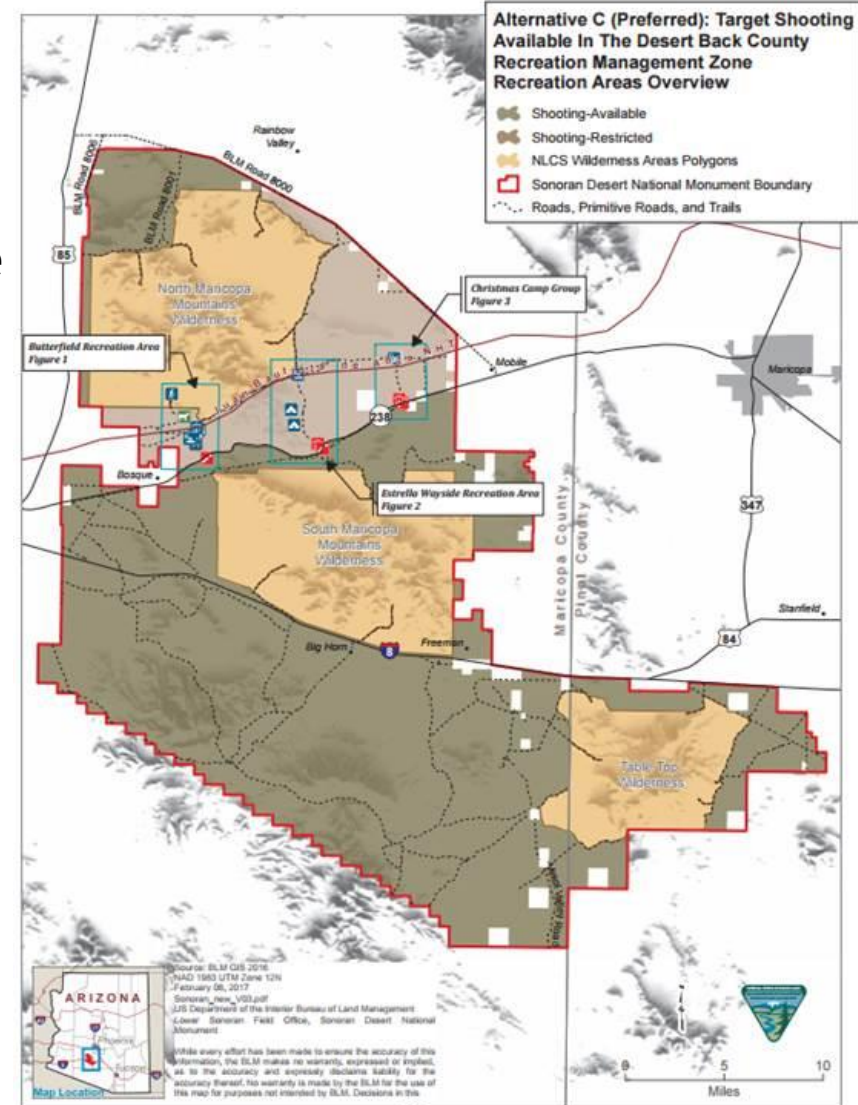
- Briefing the FEIS to DOI
 - Federal Registry Notice (FRN)
- Publish FRN for public review
- Issue a Record of Decision

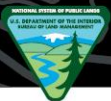




Sonoran Desert National Monument

- Completing the Land Health Evaluation and Compatibility Analysis to satisfy the US District Court decision
- MCDOT MC238 Corridor Improvement Study
- Juan Bautista de Anza Recreation Management Zone Recreation Plan
 - Butterfield Recreation Area
 - Estrella Recreation Area
 - Christmas Camp





Sonoran Desert National Monument Butterfield Recreation Area

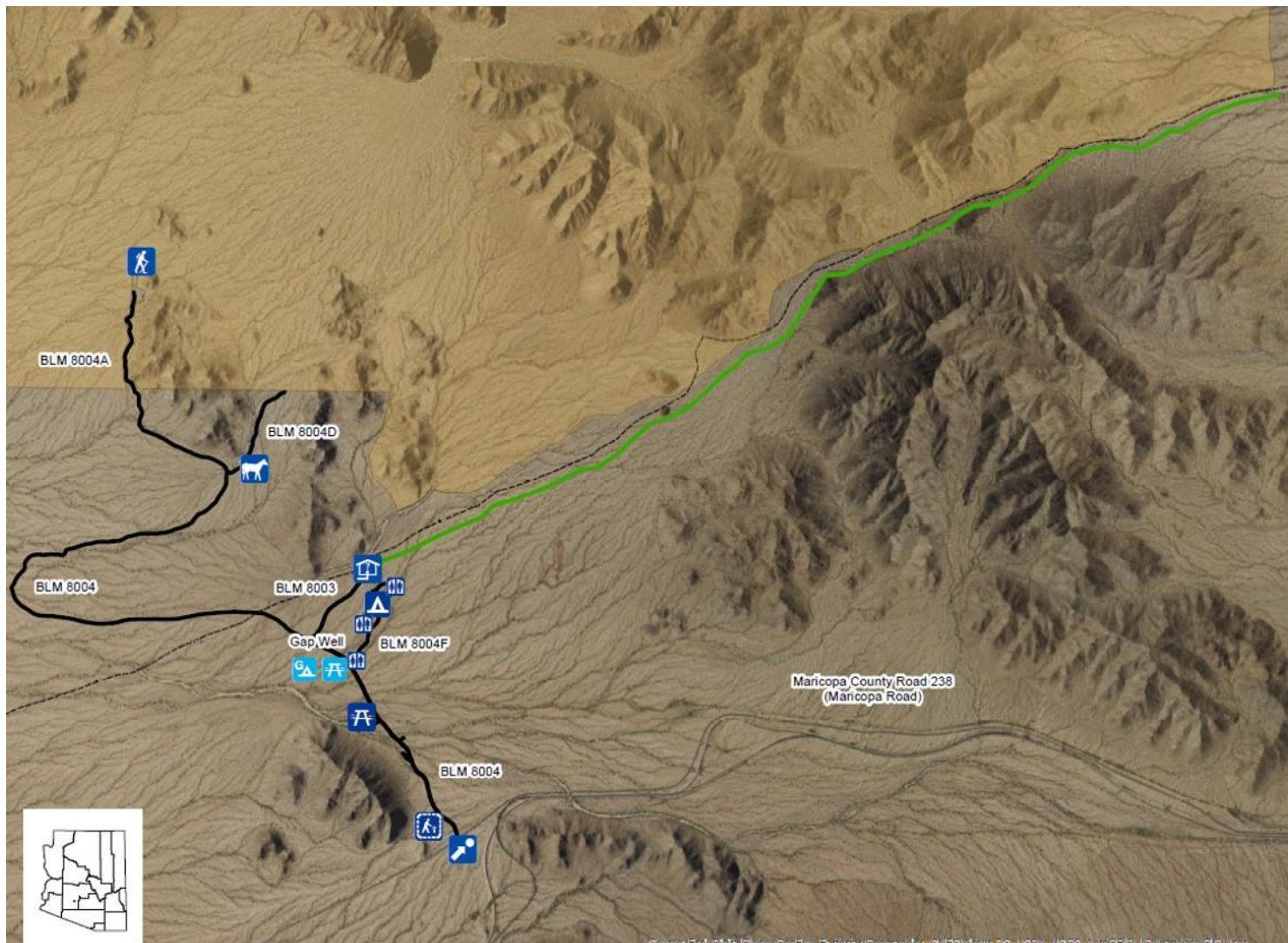


Figure 3 - Proposed
Butterfield Recreation Area
SCALE 1:83,270

- "Gap Well" Group Camp Area
- Campground
- Equestrian Facility
- Portal/Entrance Sign
- Trailhead and Picnic Tables
- Day Use Area
- Interpretive Trail
- Brittlebush Trailhead
- Vault Toilets
- Anza National Historic Trail
- Proposed Non-Motorized Trail
- Recreation Area Roads
- North Maricopa Wilderness Area



SCALE 1:83,270

Map Prepared by
Brian L. Buttazoni on
December 30, 2016

BLM 100 foot contour interval modified from USGS 10m DEM
PLUS lines are from BLM GCDR layer
Certain Routes are from ADOT and others are from BLM CTLF layer
Certain Hydro Features extracted From USGS 7.5min DRG Images
UTM 12N, NAD83





Sonoran Desert National Monument Estrella Recreation Area



Figure 4 - Proposed
Estrella-Wayside
Recreation Areas
SCALE 1:25,545

- Portal/Entrance Sign
- Visitor Information
- Primitive Campsites
- "Wayside" Group Camp Area
- Proposed Non-Motorized Trail
- Anza National Historic Trail
- Recreation Area Roads

SCALE 1:25,545

Map Prepared by
Brian L. Buttazoni on
December 30, 2016

BLM 100 foot contour interval modeled from USGS 10m DEM
PLUS lines are from BLM GCD8 layer
Certain Routes are from ADOT and others are from BLM CTRF layer
Certain Hydro Features extracted from USGS 7.5m D83 Images
UTM 12N, NAD83





Sonoran Desert National Monument Christmas Camp



Figure 5 - Proposed
Christmas Camp Group Area

SCALE 1:18,000

-  Portal/Entrance Sign
-  Visitor Information
-  "Christmas Camp" Group Area
-  Recreation Area Roads
-  Anza National Historic Trail



SCALE 1:18,000

Map Prepared by
Brian L. Buttazoni on
December 30, 2016

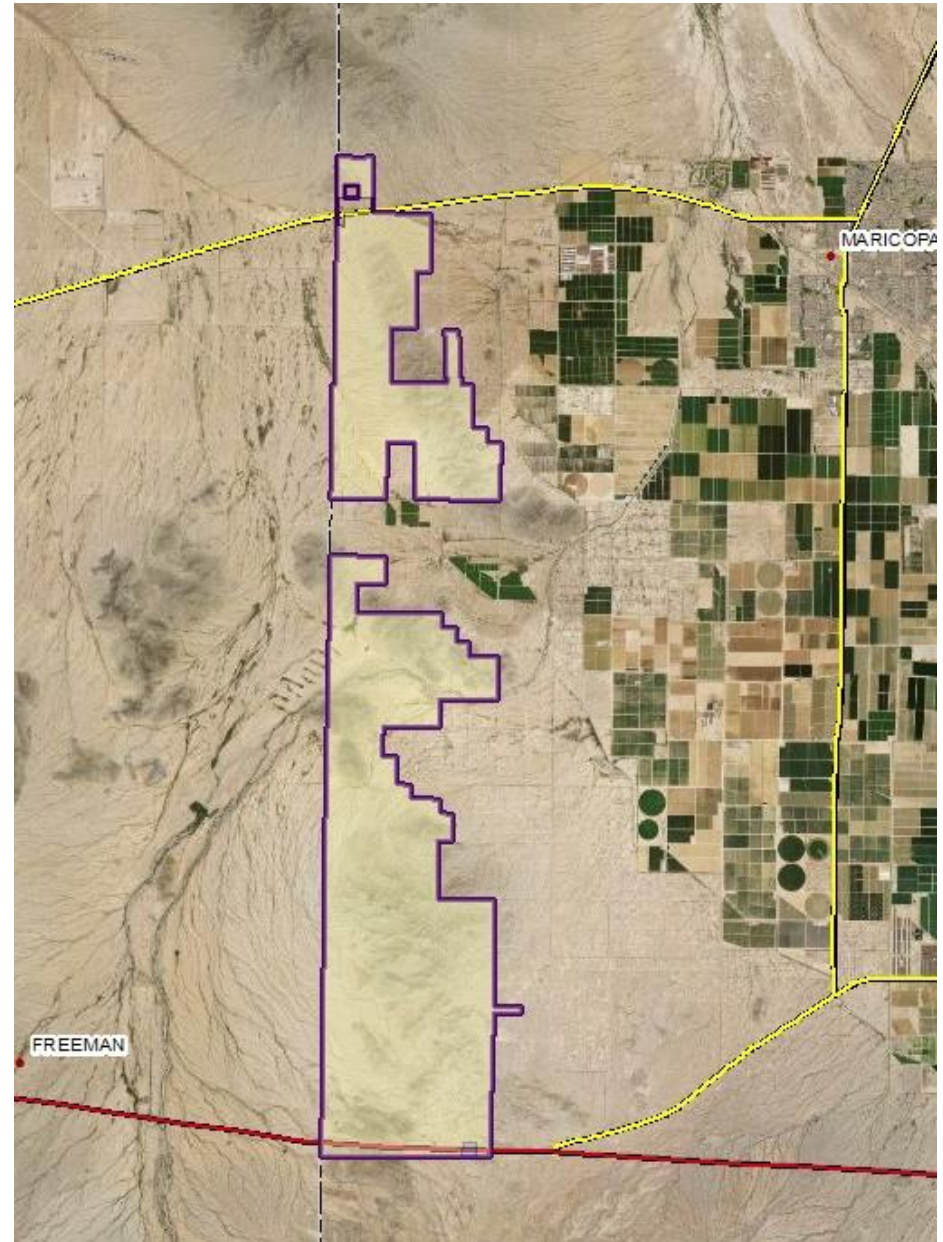
BLM 100 foot contour interval modified from USGS 10m DEM
PLSS lines are from BLM GCSB layer
Certain Routes are from ADOT and others are from BLM OTLF layer
Certain Hydro Features extracted from USGS 7.5min DEM Images
UTM 12N, NAD83





Pinal County Palo Verde Project

- Received and application
- Currently reviewing compatibility with Lower Sonoran Resource Management Plan





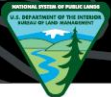
Phoenix District Office - Points of Contact

Mr. Leon Thomas, *District Manager*
Phoenix District Office
623-580-5600

Mariela Castaneda, *Public Affairs Specialist*
Phoenix District Office
623-580-5520

Edward Kender, *Field Manager*
Lower Sonoran Field Office
Phoenix District
623-580-5616

Wayne Monger, *Sonoran Desert Monument Manager*
Lower Sonoran Field Office
Phoenix District
623-580-5683



U.S. Department of the Interior
Bureau of Land Management

Questions

