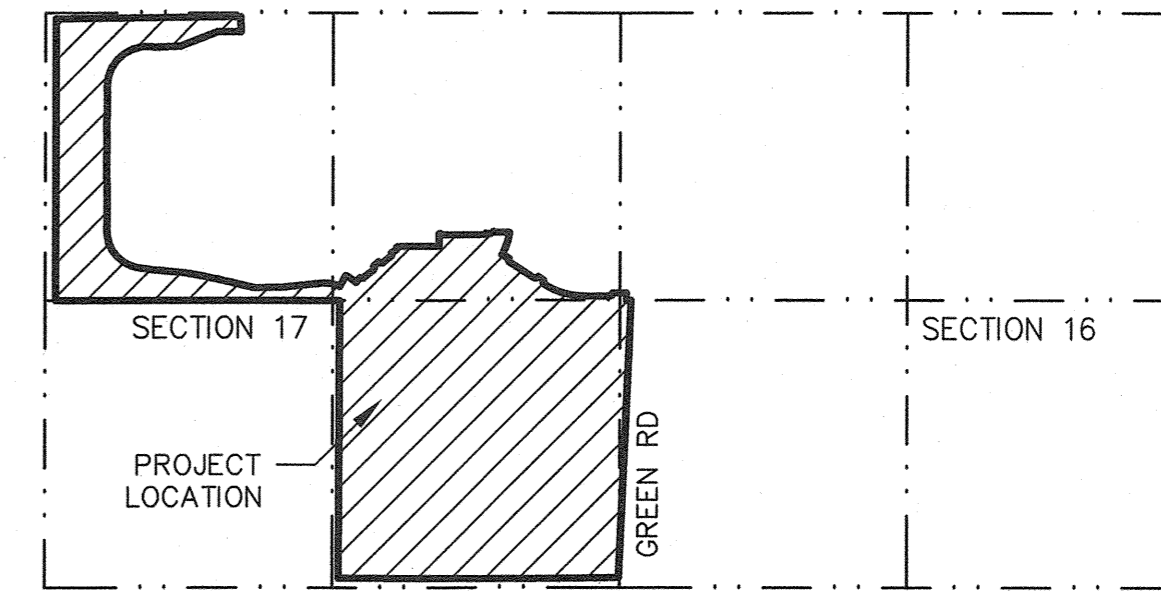
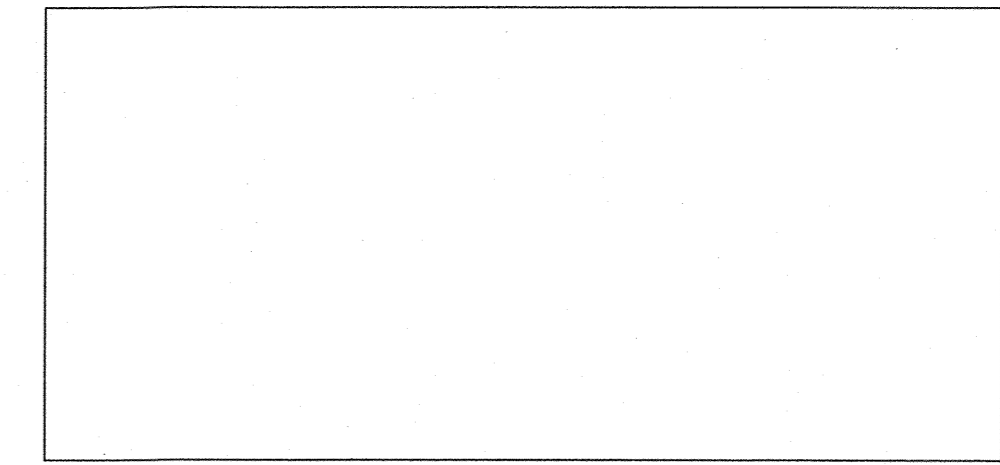


**RE-PLAT OF
BLOCK PLAT OF MOONLIGHT "PHASE 1"
AS RECORDED PER FEE NO. 2023-063952, PCR
ALSO DESCRIBED AS PARCELS N-1, N-2, O-1 & O-2
LOCATED WITHIN A PORTION OF SECTION 16 & 17,
TOWNSHIP 4 SOUTH, RANGE 3 EAST,
OF THE GILA AND SALT RIVER MERIDIAN,
CITY OF MARICOPA, PINAL COUNTY, ARIZONA**



VICINITY MAP
SECTIONS 16 & 17, T.4S., R.3E.

OWNER/DEVELOPER
FORESTAR (USA) REAL ESTATE GROUP INC
1661 E. CAMELBACK ROAD, SUITE 330
PHOENIX, ARIZONA 85016
PHONE: (480) 801-2419
CONTACT: SILVIA RICO

ENGINEER
ATWELL, LLC
4700 E. SOUTHERN AVE.
MESA, ARIZONA 85206
PHONE: (480) 218-8831
CONTACT: MICHAEL J. PARK PE
CONTACT: JAMES G. SPRING PLS

NOTES

- CONSTRUCTION WITHIN UTILITY EASEMENTS SHALL BE LIMITED TO UTILITIES, FENCES AND DRIVEWAYS.
- NO STRUCTURES OR VEGETATION OF ANY KIND THAT WOULD IMPEDE THE FLOW OF WATER THROUGH THE EASEMENTS MAY BE CONSTRUCTED, PLANTED OR ALLOWED TO GROW WITHIN DRAINAGE EASEMENTS.
- ONLY GROUND COVER AND BUSHES ARE ALLOWED TO BE PLANTED WITHIN EASEMENTS DEDICATED FOR THE EXCLUSIVE USE OF WATER, SANITARY SEWER, RECLAIMED WATER OR ANY COMBINATION THEREOF. NO TREES ARE ALLOWED.
- VISIBILITY EASEMENT RESTRICTIONS: ANY OBJECT, WALL, STRUCTURE, MOUND, OR LANDSCAPING (MATURE) OVER 24" IN HEIGHT IS NOT ALLOWED WITHIN THE VISIBILITY EASEMENT.
- ALL TRACTS THAT WILL NOT BE DEDICATED TO THE CITY OF MARICOPA AND ALL COMMON PROPERTY SHALL BE IMPROVED IN ACCORDANCE WITH PLANS APPROVED BY THE CITY OF MARICOPA AND SHALL BE CONVEYED BY WARRANTY (OR SPECIAL WARRANTY) DEED TO THE 'HOME OWNERS' ASSOCIATION. THE HOMEOWNERS' ASSOCIATION SHALL BE RESPONSIBLE FOR THE MAINTENANCE OF THE COMMON PROPERTY.
- ALL WORK WITHIN PUBLIC RIGHTS-OF-WAY REQUIRE PERMITS FROM AND INSPECTIONS BY THE CITY OF MARICOPA.
- ALL TRENCH WORK WITHIN PUBLIC UTILITY EASEMENTS ADJACENT TO PUBLIC RIGHTS-OF-WAY REQUIRE PERMITS FROM AND INSPECTIONS BY THE CITY OF MARICOPA.
- ON ALL LOTS THE OWNER AND/OR DEVELOPER SHALL ENSURE THAT RESIDENTIAL DWELLINGS CAN FIT WITHIN THE BUILDING SETBACKS INCLUDING BAY WINDOWS, FIREPLACES, PORCHES, COVERED PATIOS, ETC.
- THIS SUBDIVISION IS SUBJECT TO THE REQUIREMENTS OF THE INTERNATIONAL FIRE CODE, AS ADOPTED BY THE CITY OF MARICOPA AND ADMINISTERED BY THE CITY OF MARICOPA BUILDING SAFETY DEPARTMENT.
- TRACT, LOT AND PARCEL MONUMENTATION TO BE SET AT COMPLETION OF STREET PAVING.

SURVEYOR'S NOTE

- PURPOSE OF THIS RE-PLAT IS TO CREATE THE FOLLOWING PARCELS & TRACTS:
* N-1, N-2, O-1 & O-2,
* TRACTS 1, 2 & 3 FOR COMMUNITY MONUMENT.

BASIS OF BEARING

BASIS OF BEARING IS ALONG THE WEST LINE OF THE NORTHWEST OF SECTION 17, T.4S., R.3E. BEING N00°11'45"W WITH A DISTANCE OF 2652.89 FEET.

APPROVALS

APPROVED: _____ DATE _____
DEVELOPMENT SERVICES DIRECTOR
CITY OF MARICOPA, ARIZONA

APPROVED: _____ DATE _____
CITY ENGINEER
CITY OF MARICOPA, ARIZONA

APPROVED BY THE COUNCIL OF THE CITY OF MARICOPA,
ARIZONA, THIS _____ DAY OF _____ 2024.

BY: _____ MAYOR _____ DATE _____

ATTEST: _____ CITY CLERK _____ DATE _____

AREA TABLE

AREA TABLE		
"RIGHT OF WAY"	AREA SQ FT	AREA ACRES
EAGLES LANDING PLACE	106,912	2.45
GREEN ROAD	273,857	6.29
MOONLIGHT DRIVE	234,789	5.39
NIGHTINGALE DRIVE	79,366	1.82
SATURN DRIVE	98,755	2.27
NEPTUNE DRIVE	34,081	0.78
SR238	4,768	0.11
"TOTAL"	832,528	19.11

"PARCELS"		
PARCEL	AREA SQ FT	AREA ACRES
PARCEL A	1,865,466	42.83
PARCEL B	1,456,087	33.43
PARCEL K1	1,823,934	41.87
PARCEL K2	771,661	17.71
PARCEL N-1	2,464,886	56.58
PARCEL N-2	199,813	4.59
PARCEL O-1	203,558	4.67
PARCEL O-2	77,995	1.79
PARCEL P	181,903	4.18
"TOTAL"	9,045,303	207.65

"TRACT"			USAGES	
TRACT	AREA SQ FT	AREA ACRES		
TRACT A	8,349	0.19	COMMON AREA, OPEN SPACE, LANDSCAPE & DRAINAGE	
TRACT B	26,442	0.61	COMMON AREA, OPEN SPACE, LANDSCAPE & DRAINAGE	
TRACT C	70,766	1.61	COMMON AREA, OPEN SPACE, LANDSCAPE & DRAINAGE	
TRACT D	6,688	0.17	COMMON AREA, OPEN SPACE, LANDSCAPE & DRAINAGE	
MONUMENT TRACT 1	7,404	0.17	MONUMENT & LANDSCAPE	
MONUMENT TRACT 2	7,035	0.16	MONUMENT & LANDSCAPE	
MONUMENT TRACT 3	9,857	0.23	MONUMENT & LANDSCAPE	
"TOTAL"	136,541	3.13		

"LIFT STATION"		
	AREA SQ FT	AREA ACRES
"TOTAL"	19,556	0.45
"TOTAL"	10,033,928	230.35

LAND USE TABLE

GROSS ACREAGE	230.35 ACRES
AREA OF PUBLIC STREETS	19.11 ACRES
NET ACREAGE	211.24 ACRES
AREA OF TRACTS	3.13 ACRES
AREA OF PARCELS	207.65 ACRES
TOTAL NUMBER OF PARCELS	9 PARCELS

ASSURED WATER STATEMENT

THE ARIZONA DEPARTMENT OF WATER RESOURCES HAS GRANTED A DESIGNATION ASSURED WATER SUPPLY, DWR FILE NO. 86-402008.0001, FOR THE SUBDIVISION IN ACCORDANCE WITH SECTION 45-576, OF THE ARIZONA REVISED STATUTES (ARS).

SANITARY SEWER

GLOBAL WATER - PALO VERDE UTILITIES, LLC AGREED TO SERVE THIS SUBDIVISION, AND HAS NOT AGREED TO ALLOW THE SUBDIVISION TO USE AN ALTERNATIVE SEWER DISPOSAL METHOD.

ASSURANCE STATEMENT

ASSURANCE IN THE FORM OF A PERFORMANCE BOND, ISSUED FROM ARCH INSURANCE IN THE AMOUNT OF \$2,353,132.56 HAS BEEN DEPOSITED WITH THE CITY ENGINEER TO GUARANTEE CONSTRUCTION OF THE REQUIRED SUBDIVISION IMPROVEMENTS.

LAND SURVEYOR'S CERTIFICATION

I HEREBY CERTIFY THAT I AM REGISTERED PROFESSIONAL LAND SURVEYOR IN THE STATE OF ARIZONA; THAT THIS PLAT HEREON HAS BEEN PREPARED FROM A SURVEY PERFORMED BY ME OR UNDER MY DIRECT SUPERVISION DURING THE MONTH OF AUGUST, 2024, THAT THE SURVEY IS TRUE AND ACCURATELY REPRESENTS THE PROPERTY DESCRIBED HEREON. I FURTHER CERTIFY THAT ALL MONUMENTS EXIST OR WILL BE SET AS SHOWN, THAT ALL LOT CORNERS ARE SET OR WILL BE SET, IN ACCORDANCE WITH THE LATEST ADAPTED "ARIZONA BOUNDARY SURVEY MINIMUM STANDARDS"; AND THAT SAID MONUMENTS ARE SUFFICIENT TO ENABLE THE SURVEY TO BE RETRACED.

JAMES G. SPRING, PLS 22282
ATWELL, LLC
4700 E. SOUTHERN AVE.
MESA, ARIZONA 85206
PHONE: (480) 218-8831



DEDICATION

STATE OF ARIZONA)
COUNTY OF PINAL) SS

KNOW ALL PERSONS BY THESE PRESENTS:

FORESTAR (USA) REAL ESTATE GROUP INC, HAS SUBDIVIDED UNDER THE NAME OF "RE-PLAT OF BLOCK PLAT OF MOONLIGHT "PHASE 1" AS RECORDED PER FEE NO. 2023-063952, PCR" ALSO DESCRIBED AS PARCEL N-1, N-2, O-1 & O-2 LOCATED WITHIN A PORTION OF SECTION 16 & 17, TOWNSHIP 4 SOUTH, RANGE 3 EAST OF THE GILA AND SALT RIVER MERIDIAN, CITY OF MARICOPA, PINAL COUNTY ARIZONA, AS SHOWN PLATTED HEREON AND HEREBY DECLARES THIS PLAT SETS FORTH THE LOCATION AND GIVES THE DIMENSIONS OF THE PARCEL, TRACTS, STREETS, AND EASEMENTS CONSTITUTING SAME AND THAT SAID PARCELS, TRACTS AND STREETS SHALL BE KNOWN BY THE NUMBER, LETTER OR NAME GIVEN EACH RESPECTIVELY.

OWNER HEREBY DEDICATES AND CONVEYS TO THE CITY OF MARICOPA, IN FEE ALL REAL PROPERTY DESIGNATED ON THIS PLAT AS "RIGHT OF WAY" OR R/W FOR USE AS PUBLIC RIGHT OF WAY.

EASEMENTS ARE DEDICATED AS SHOWN ON THIS PLAT

CHANNEL MAINTENANCE: MOONLIGHT SHADOW COMMUNITY MASTER ASSOCIATION SHALL MAINTAIN THE FLOODPLAIN CHANNELS AND IMPROVEMENTS LOCATED THEREON WITHIN THE MOONLIGHT COMMUNITY. IMPROVEMENTS LOCATED THEREON, SHALL BE MAINTAINED IN GOOD CONDITION AND REPAIR AT ALL TIMES.

NO OWNER, RESIDENT OR OTHER PERSON SHALL CONSTRUCT OR INSTALL ANY IMPROVEMENTS WITHIN THE CHANNEL EASEMENT OR ALTER, MODIFY OR REMOVE ANY IMPROVEMENTS SITUATED ON THE CHANNEL EASEMENTS. NO OWNER, RESIDENT OR OTHER PERSON SHALL OBSTRUCT OR INTERFERE WITH THE ASSOCIATION IN THE PERFORMANCE OF THE ASSOCIATION'S MANAGEMENT, OPERATION OR MAINTENANCE OF THE CHANNEL EASEMENTS.

NO OWNER, RESIDENT OR OTHER PERSON SHALL PLACE LITTER INCLUDING GARBAGE, LANDSCAPE DEBRIS AND ALL OTHER FORMS OF REFUSE AND OTHER MATERIALS ON THE CHANNEL EASEMENT. NO OWNER, RESIDENT OR OTHER PERSON IS PERMITTED TO USE NON-AUTHORIZED VEHICLES WITHIN THE EASEMENT. NO OWNER, RESIDENT OR OTHER PERSON SHALL CAUSE ANY DISTURBANCE INCLUDING THE SLOPES WITHOUT THE PERMISSION OF THE CITY AND THE ASSOCIATION.

HOMEOWNERS ASSOCIATION WILL ASSUME RESPONSIBILITY FOR THE MONTHLY OPERATING AND MAINTENANCE COSTS FOR ALL STREETLIGHTS WITHIN THE DEVELOPMENT AND ADJACENT ARTERIALS.

THE MAINTENANCE OF LANDSCAPING WITHIN THE PUBLIC RIGHT-OF-WAY TO BACK OF CURB SHALL BE THE RESPONSIBILITY OF THE ADJUTING PROPERTY OWNER.

TRACTS DESIGNATED AS PARCEL N-1, PARCEL O-1, PARCEL O-2, TRACTS A THROUGH D AND MONUMENT TRACTS 1 THROUGH 3 ARE HEREBY DECLARED AS COMMON AREA TO BE OWNED AND MAINTAINED BY THE HOMEOWNERS' ASSOCIATION.

IN WITNESS WHEREOF:

FORESTAR (USA) REAL ESTATE GROUP INC, HAS HEREUNTO CAUSED ITS NAME TO BE AFFIXED AND HAS EXECUTED THIS SUBDIVISION PLAT BY THE SIGNATURES OF THE UNDERSIGNED DULY AUTHORIZED THIS _____ DAY OF _____ 2024.

OWNER: FORESTAR (USA) REAL ESTATE GROUP INC

BY: _____

NAME: _____

TITLE: _____

ACKNOWLEDGMENT

STATE OF ARIZONA)
COUNTY OF PINAL) SS

ON THIS _____ DAY OF _____ 2024, BEFORE ME, THE UNDERSIGNED, PERSONALLY

APPEARED _____ WHO ACKNOWLEDGES THAT HE/SHE EXECUTED THE FOREGOING INSTRUMENT FOR THE PURPOSES CONTAINED THEREIN.

IN WITNESS WHEREOF I HEREBY SET MY HAND AND OFFICIAL SEAL.

NOTARY PUBLIC _____ DATE _____

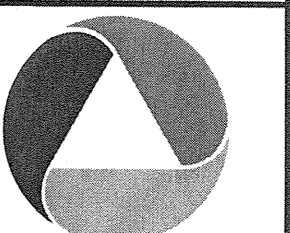
MY COMMISSION EXPIRES: _____

SHEET INDEX

DESCRIPTION	SHEET NO
COVER SHEET	1
KEY MAP	2
LEGAL DESCRIPTION	3
PLAT SHEETS	4 - 14

LEGEND

—————	SUBDIVISION BOUNDARY
—————	RIGHT OF WAY LINE
—————	EXISTING RIGHT OF WAY LINE
—————	CENTERLINE
-----	PUBLIC UTILITY EASEMENT
-----	VEHICULAR NON-ACCESS EASEMENT
-----	8' PUBLIC UTILITY EASEMENT DEDICATED BY SEPARATE INSTRUMENT
-----	20' FORCE MAIN SEWER EASEMENT DEDICATED BY SEPARATE INSTRUMENT
-----	SECTION LINE
▲	SUBDIVISION CORNER TO BE SET
○	FOUND MONUMENT AS NOTED
◎	CENTERLINE MONUMENT (BRASS CAP)
R/W	RIGHT-OF-WAY
*R/W	RIGHT OF WAY DEDICATED BY SEPARATE INSTRUMENT
PUE	PUBLIC UTILITY EASEMENT
VNAE	VEHICULAR NON-ACCESS EASEMENT
①	21'x21' SIGHT VISIBILITY EASEMENT
②	33'x33' SIGHT VISIBILITY EASEMENT
D	DELTA
C1	CURVE TABLE NUMBER
L1	LINE TABLE NUMBER



COPYRIGHT © 2023 ATWELL LLC. NO REPRODUCTION SHALL BE MADE WITHOUT THE PRIOR WRITTEN CONSENT OF ATWELL LLC.

K:\20020292 - ANGLIN DAIRY\DWG\SURVEY\BLOCK PLAT\BLOCK PLAT REVISED 06-08-2023\20020292.MXD 12:39 PM 06/08/2023 12:40 PM

USA TR FOR AK-CHIN
INDIAN COMM OF MARICOPA
APN 510-12-002B

N0011'45"W 2652.89'

N00'46'02"W 2641.15'

33' ROADWAY ESMT PER
DKT 375, PG 574, P.C.R.

NORTHWEST CORNER SECTION 17, T.4S., R.3E.
FND BRASS CAP STAMPED US DEPT OF THE INTERIOR
ALSO BEING THE "POINT OF BEGINNING"

NORTH QUARTER CORNER SECTION 17, T.4S., R.3E.
FND BRASS CAP STAMPED US DEPT OF THE INTERIOR

NO MANS LAND
"NO ALLOWABLE ENCROACHMENT"

CULTURAL TIE POINT
FND 1/2" REBAR NO CAP OR TAG

1737.32'
"MOONLIGHT"
PARCEL N-1

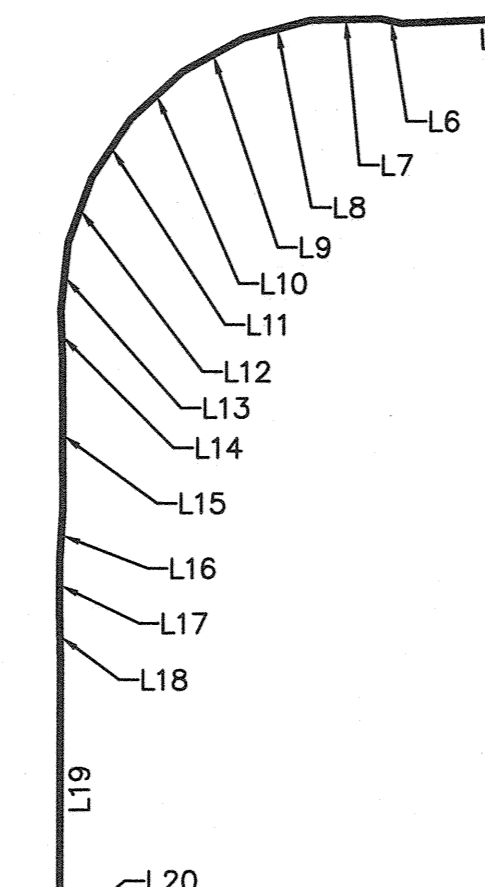
N89°15'44"E 2683.60'

946.27'

N89°12'12"E 2633.97'

N88°10'50"E
221.96'

NORTHEAST CORNER SECTION 17, T.4S., R.3E.
FND BRASS CAP ILLEGIBLE



"MOONLIGHT"
PARCEL N-1

"MOONLIGHT"
PARCEL N-1

WEST QUARTER CORNER SECTION 17, T.4S.,
R.3E. FND BRASS CAP ILLEGIBLE

ANGEL INVESTORS LLC
APN 510-15-002F

CITY OF MARICOPA
APN 510-15-002G

SOUTHWEST CORNER SECTION 17, T.4S., R.3E.
FND GENERAL LAND OFFICE MONUMENT

N89°58'05"W 2638.03'
SR238-SMITH ENKE RD

LINE TABLE			LINE TABLE			LINE TABLE			LINE TABLE			LINE TABLE		
LINE #	DIRECTION	LENGTH	LINE #	DIRECTION	LENGTH	LINE #	DIRECTION	LENGTH	LINE #	DIRECTION	LENGTH	LINE #	DIRECTION	LENGTH
L1	S01°12'14"E	141.53'	L18	S00°52'13"E	68.70'	L35	S84°30'35"E	53.27'	L52	S75°07'44"E	42.86'	L69	S51°46'40"E	16.25'
L2	S89°53'22"W	55.20'	L19	S00°02'32"E	329.39'	L36	S84°30'59"E	50.00'	L53	S66°56'12"E	42.86'	L70	N89°49'30"E	119.95'
L3	S89°48'59"W	160.38'	L20	S00°11'01"E	50.00'	L37	S84°30'35"E	200.00'	L54	N27°09'33"E	120.00'	L71	S81°47'19"E	18.08'
L4	S69°02'50"W	376.01'	L21	S00°46'19"E	50.00'	L38	S80°16'58"E	48.81'	L55	N42°50'14"E	60.00'	L72	S62°45'20"E	70.00'
L5	S87°43'54"W	246.58'	L22	S04°09'40"E	50.12'	L39	S79°57'43"E	150.00'	L56	N51°34'39"E	113.58'	L73	S57°55'51"E	267.40'
L6	N77°39'02"W	27.87'	L23	S00°11'01"E	350.00'	L40	S75°23'17"E	50.16'	L57	N46°45'01"E	60.87'	L74	S57°55'51"E	60.00'
L7	S88°53'29"W	90.94'	L24	S01°07'05"W	50.01'	L41	S79°57'43"E	50.00'	L58	N51°34'39"E	92.95'	L75	S57°55'51"E	15.66'
L8	S75°03'52"W	90.94'	L25	S03°04'58"E	65.70'	L42	S76°58'08"E	366.24'	L59	N58°00'06"E	60.01'	L76	N89°49'30"E	149.86'
L9	S61°14'15"W	90.94'	L26	S14°15'44"E	70.93'	L43	N89°48'59"E	90.00'	L60	N06°10'14"W	23.31'	L77	N00°10'30"W	18.00'
L10	S47°24'38"W	90.94'	L27	S25°30'54"E	70.93'	L44	N84°44'12"E	45.18'	L61	N83°49'46"E	45.00'	L78	N56°02'30"E	147.15'
L11	S33°35'01"W	90.94'	L28	S36°46'03"E	70.93'	L45	N89°48'59"E	115.85'	L62	N86°51'53"E	41.42'	L79	N89°49'30"E	12.84'
L12	S19°45'24"W	90.94'	L29	S48°01'12"E	70.93'	L46	N83°28'10"E	29.82'	L63	N89°49'30"E	315.00'	L80	S00°10'30"E	69.82'
L13	S05°55'47"W	89.42'	L30	S59°16'21"E	70.93'	L47	N83°44'47"E	46.72'	L64	N00°08'52"W	120.00'	L81	N89°49'30"E	70.00'
L14	S02°25'44"E	65.05'	L31	S70°31'30"E	70.93'	L48	N83°57'22"E	270.00'	L65	N89°49'30"E	13.96'	L82	S00°10'30"E	68.78'
L15	S00°11'01"E	195.00'	L32	S81°28'05"E	62.21'	L49	N83°58'06"E	45.00'	L66	S00°10'30"E	13.00'	L83	N89°48'59"E	103.31'
L16	S03°20'05"W	65.12'	L33	S83°33'44"E	50.01'	L50	N88°29'52"E	42.74'	L67	N89°49'30"E	423.96'			
L17	S00°10'51"E	65.00'	L34	S82°43'34"E	50.00'	L51	S83°19'15"E	42.86'	L68	N00°10'30"W	13.00'			

CURVE TABLE			
CURVE #	LENGTH	RADIUS	DELTA
C1	114.93'	420.00'	015°40'41"
C2	35.46'	25.00'	081°15'35"
C3	44.78'	30.00'	085°31'06"
C4	49.91'	30.00'	095°18'50"
C5	36.47'	25.00'	083°34'33"
C6	11.25'	41.00'	015°43'32"
C7	69.88'	59.00'	067°51'48"
C8	223.52'	672.86'	019°02'00"
C9	44.60'	30.00'	085°10'32"
C10	47.12'	30.00'	090°00'00"
C11	47.12'	30.00'	090°00'00"
C12	362.98'	645.00'	032°14'38"

ANGEL INVESTORS LLC
APN 510-15-002C

CITY OF MARICOPA
APN 510-15-002D

RIGHT OF WAY-PROP COR
SECTION 17, T.4S., R.3E.
FND 1/2" REBAR NO CAP AFFIXED

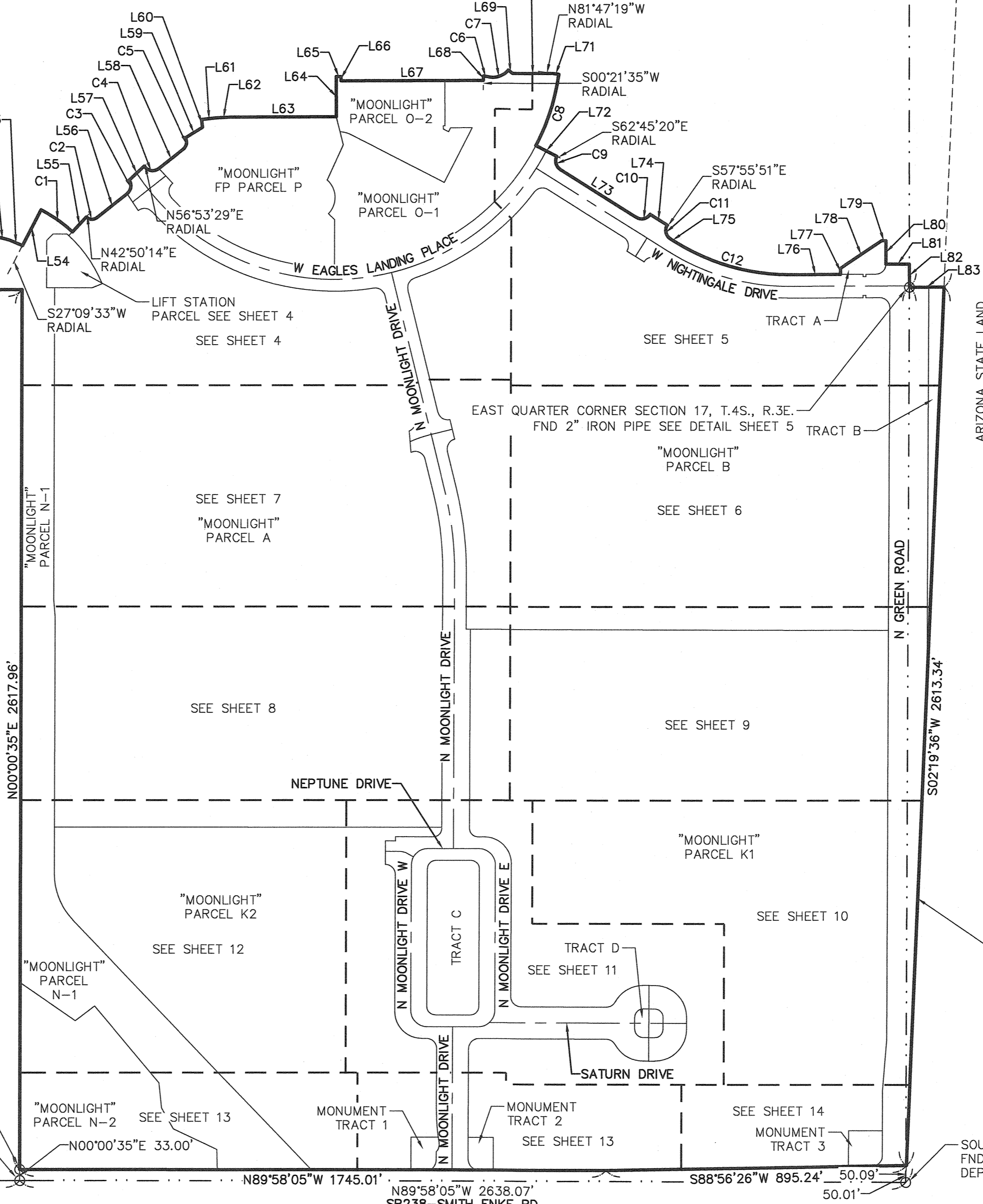
SOUTH QUARTER CORNER
SECTION 17, T.4S., R.3E.
FND 2" IRON PIPE

N00°00'35"E 2617.96'

N00°00'35"E 33.00'

N89°58'05"W 1745.01'

SR238-SMITH ENKE RD



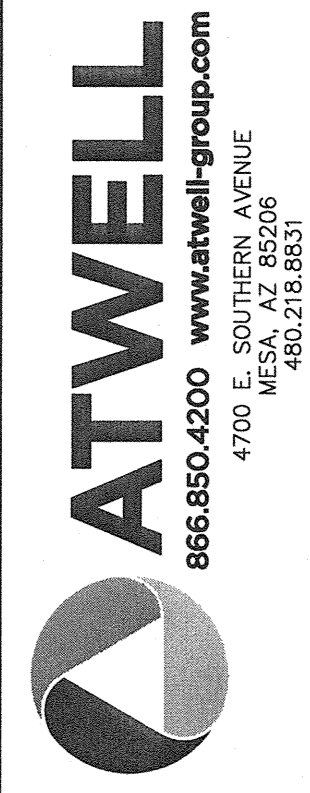
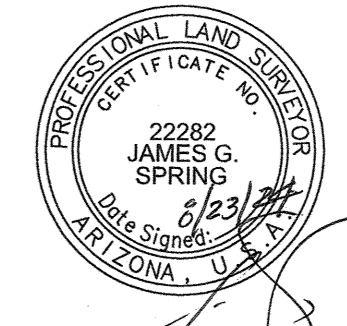
N89°58'05"W 2638.07'
SR238-SMITH ENKE RD

S88°56'26"W 895.24'

SOUTHEAST CORNER SECTION 17, T.4S., R.3E.
FND BRASS CAP IN HANDHOLE STAMPED AZ
DEPT TRANSPORTATION SEE DETAIL SHEET 10

CULTURAL LINE AS DESCRIBED IN
BK 1, PG 174, P.C.R.

CULTURAL LINE AS DESCRIBED IN
BK 1, PG 174, P.C.R.

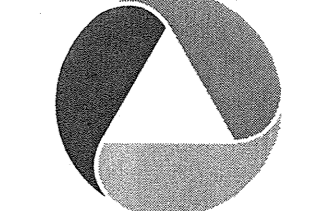


COUNTY: PINAL
SECTIONS: 16 & 17
TOWNSHIP: 4 SOUTH
RANGE: 3 EAST

RE-PLAT
MOONLIGHT "PHASE 1"
RECORDED PER FEE
NO. 2023-063952, PCR
CITY OF MARICOPA, ARIZONA

AUGUST 2024

REVISIONS:



PM. J. SPRING
DR. R. GILES
JOB NO.
20020292

SCALE 0 125 250
1" = 250 FEET

20020292 MOONLIGHT RE-PLAT OF BLOCK PLATING

SHEET NO.
2 OF 14

K:\20002092 - ANGLIN DAIRY\DWG\SURVEY\BLOCK PLAT\BLOCK PLAT RE-PLAT OF BLOCK PLAT.DWG SAVEDATE:8/23/2024 12:39 PM PLOTDATE:8/23/2024 12:40 PM COPYRIGHT © 2023 ATWELL LLC. NO REPRODUCTION SHALL BE MADE WITHOUT THE PRIOR WRITTEN CONSENT OF ATWELL LLC

LEGAL DESCRIPTION

LOCATED WITHIN A PORTION OF SECTION 27, TOWNSHIP 4 SOUTH, RANGE 3 EAST OF THE GILA AND SALT RIVER BASE AND MERIDIAN, PINAL COUNTY, ARIZONA,

MORE PARTICULARLY DESCRIBED AS FOLLOWS:

BEGINNING AT A FOUND BRASS CAP STAMPED US DEPT OF THE INTERIOR, ACCEPTED AS THE NORTHWEST CORNER OF SECTION 27, TOWNSHIP 4 SOUTH, RANGE 3 EAST,

THENCE, ALONG THE NORTH LINE OF SAID SECTION 27, N89°15'44"E A DISTANCE OF 1737.32 FEET;

THENCE, LEAVING THE NORTH LINE OF SAID SECTION 27, S01°12'14"E A DISTANCE OF 141.53 FEET;

THENCE, S89°53'22"W A DISTANCE OF 55.20 FEET;

THENCE, S89°48'59"W A DISTANCE OF 160.38 FEET;

THENCE, S69°02'50"W A DISTANCE OF 376.01 FEET;

THENCE, S87°43'54"W A DISTANCE OF 246.58 FEET;

THENCE, N77°39'02"W A DISTANCE OF 27.87 FEET;

THENCE, S88°53'29"W A DISTANCE OF 90.94 FEET;

THENCE, S75°03'52"W A DISTANCE OF 90.94 FEET;

THENCE, S61°14'15"W A DISTANCE OF 90.94 FEET;

THENCE, S47°24'38"W A DISTANCE OF 90.94 FEET;

THENCE, S33°35'01"W A DISTANCE OF 90.94 FEET;

THENCE, S19°45'24"W A DISTANCE OF 90.94 FEET;

THENCE, S05°55'47"W A DISTANCE OF 89.42 FEET;

THENCE, S02°25'44"E A DISTANCE OF 65.05 FEET;

THENCE, S00°11'01"E A DISTANCE OF 195.00 FEET;

THENCE, S03°20'05"W A DISTANCE OF 65.12 FEET;

THENCE, S00°10'51"E A DISTANCE OF 65.00 FEET;

THENCE, S00°52'13"E A DISTANCE OF 68.70 FEET;

THENCE, S00°02'32"E A DISTANCE OF 329.39 FEET;

THENCE, S00°11'01"E A DISTANCE OF 50.00 FEET;

THENCE, S00°46'19"E A DISTANCE OF 50.00 FEET;

THENCE, S04°09'40"E A DISTANCE OF 50.12 FEET;

THENCE, S00°11'01"E A DISTANCE OF 350.00 FEET;

THENCE, S01°07'05"W A DISTANCE OF 50.01 FEET;

THENCE, S03°04'58"E A DISTANCE OF 65.70 FEET;

THENCE, S14°15'44"E A DISTANCE OF 70.93 FEET;

THENCE, S25°30'54"E A DISTANCE OF 70.93 FEET;

THENCE, S36°46'03"E A DISTANCE OF 70.93 FEET;

THENCE, S48°01'12"E A DISTANCE OF 70.93 FEET;

THENCE, S59°16'21"E A DISTANCE OF 70.93 FEET;

THENCE, S70°31'30"E A DISTANCE OF 70.93 FEET;

THENCE, S81°28'05"E A DISTANCE OF 62.21 FEET;

THENCE, S83°33'44"E A DISTANCE OF 50.01 FEET;

THENCE, S82°43'34"E A DISTANCE OF 50.00 FEET;

THENCE, S84°30'35"E A DISTANCE OF 53.27 FEET;

THENCE, S84°30'59"E A DISTANCE OF 50.00 FEET;

THENCE, S84°30'35"E A DISTANCE OF 200.00 FEET;

THENCE, S80°16'58"E A DISTANCE OF 48.81 FEET;

THENCE, S79°57'43"E A DISTANCE OF 150.00 FEET;

THENCE, S75°23'17"E A DISTANCE OF 50.16 FEET;

THENCE, S79°57'43"E A DISTANCE OF 50.00 FEET;

LEGAL DESCRIPTION

THENCE, S76°58'08"E A DISTANCE OF 366.24 FEET;

THENCE, N89°48'59"E A DISTANCE OF 90.00 FEET;

THENCE, N84°44'12"E A DISTANCE OF 45.18 FEET;

THENCE, N89°48'59"E A DISTANCE OF 115.85 FEET;

THENCE, N83°28'10"E A DISTANCE OF 29.82 FEET;

THENCE, N83°44'47"E A DISTANCE OF 46.72 FEET;

THENCE, N83°57'22"E A DISTANCE OF 270.00 FEET;

THENCE, N83°58'06"E A DISTANCE OF 45.00 FEET;

THENCE, N88°29'52"E A DISTANCE OF 42.74 FEET;

THENCE, S83°19'15"E A DISTANCE OF 42.86 FEET;

THENCE, S75°07'44"E A DISTANCE OF 42.86 FEET;

THENCE, S66°56'12"E A DISTANCE OF 42.86 FEET;

THENCE, N27°09'33"E A DISTANCE OF 120.00 FEET TO THE BEGINNING OF A NON-TANGENT CURVE CONCAVE TO THE RIGHT;

THENCE, SOUTHEASTERLY ALONG SAID CURVE AN ARC LENGTH OF 114.93 FEET, WITH A RADIUS OF 420.00 FEET AND THE RADIAL BEARING OF S27°09'33"W AND A CENTRAL ANGLE OF 15°40'41";

THENCE, N42°50'14"E A DISTANCE OF 60.00 FEET TO THE BEGINNING OF A NON-TANGENT CURVE CONCAVE TO THE LEFT;

THENCE, EASTERLY ALONG SAID CURVE AN ARC LENGTH OF 35.46 FEET, WITH A RADIUS OF 25.00 FEET AND THE RADIAL BEARING OF N42°50'14"E AND A CENTRAL ANGLE OF 81°15'35";

THENCE, N51°34'39"E A DISTANCE OF 113.58 FEET TO THE BEGINNING OF A TANGENT CURVE CONCAVE TO THE LEFT;

THENCE, NORTHERLY ALONG SAID CURVE AN ARC LENGTH OF 44.78 FEET, WITH A RADIUS OF 30.00 FEET AND A CENTRAL ANGLE OF 85°31'06";

THENCE, N46°45'01"E A DISTANCE OF 60.87 FEET TO THE BEGINNING OF A NON-TANGENT CURVE CONCAVE TO THE LEFT;

THENCE, EASTERLY ALONG SAID CURVE AN ARC LENGTH OF 49.91 FEET, WITH A RADIUS OF 30.00 FEET AND THE RADIAL BEARING OF N56°53'29"E AND A CENTRAL ANGLE OF 95°18'50";

THENCE, N51°34'39"E A DISTANCE OF 92.95 FEET TO THE BEGINNING OF A TANGENT CURVE CONCAVE TO THE LEFT;

THENCE, NORTHERLY ALONG SAID CURVE AN ARC LENGTH OF 36.47 FEET, WITH A RADIUS OF 25.00 FEET AND A CENTRAL ANGLE OF 83°34'33";

THENCE, N58°00'06"E A DISTANCE OF 60.01 FEET;

THENCE, N06°10'14"W A DISTANCE OF 23.31 FEET;

THENCE, N83°49'46"E A DISTANCE OF 45.00 FEET;

THENCE, N86°51'53"E A DISTANCE OF 41.42 FEET;

THENCE, N89°49'30"E A DISTANCE OF 315.00 FEET;

THENCE, N00°08'52"W A DISTANCE OF 120.00 FEET;

THENCE, N89°49'30"E A DISTANCE OF 13.96 FEET;

THENCE, S00°10'30"E A DISTANCE OF 13.00 FEET;

THENCE, N89°49'30"E A DISTANCE OF 423.96 FEET;

THENCE, N00°10'30"W A DISTANCE OF 13.00 FEET TO THE BEGINNING OF A NON-TANGENT CURVE CONCAVE TO THE RIGHT;

THENCE, EASTERLY ALONG SAID CURVE AN ARC LENGTH OF 11.25 FEET, WITH A RADIUS OF 41.00 FEET AND THE RADIAL BEARING OF S00°21'35"W AND A CENTRAL ANGLE OF 15°43'32" TO THE BEGINNING OF A REVERSE CURVE CONCAVE TO THE LEFT;

THENCE, EASTERLY ALONG SAID CURVE AN ARC LENGTH OF 69.88 FEET, WITH A RADIUS OF 59.00 FEET AND A CENTRAL ANGLE OF 67°51'48";

THENCE, S51°46'40"E A DISTANCE OF 16.25 FEET;

THENCE, N89°49'30"E A DISTANCE OF 119.95 FEET;

THENCE, S81°47'19"E A DISTANCE OF 18.08 FEET TO THE BEGINNING OF A NON-TANGENT CURVE CONCAVE TO THE RIGHT;

THENCE, SOUTHERLY ALONG SAID CURVE AN ARC LENGTH OF 223.52 FEET, WITH A RADIUS OF 672.86 FEET AND THE RADIAL BEARING OF N81°47'19"W AND A CENTRAL ANGLE OF 19°02'00";

LEGAL DESCRIPTION

THENCE, S62°45'20"E A DISTANCE OF 70.00 FEET TO THE BEGINNING OF A NON-TANGENT CURVE CONCAVE TO THE LEFT;

THENCE, SOUTHERLY ALONG SAID CURVE AN ARC LENGTH OF 44.60 FEET, WITH A RADIUS OF 30.00 FEET AND THE RADIAL BEARING OF S62°45'20"E AND A CENTRAL ANGLE OF 85°10'32";

THENCE, S57°55'51"E A DISTANCE OF 267.40 FEET TO THE BEGINNING OF A TANGENT CURVE CONCAVE TO THE LEFT;

THENCE, EASTERLY ALONG SAID CURVE AN ARC LENGTH OF 47.12 FEET, WITH A RADIUS OF 30.00 FEET AND A CENTRAL ANGLE OF 90°00'00";

THENCE, S57°55'51"E A DISTANCE OF 60.00 FEET TO THE BEGINNING OF A NON-TANGENT CURVE CONCAVE TO THE LEFT;

THENCE, SOUTHERLY ALONG SAID CURVE AN ARC LENGTH OF 47.12 FEET, WITH A RADIUS OF 30.00 FEET AND THE RADIAL BEARING OF S57°55'51"E AND A CENTRAL ANGLE OF 90°00'00";

THENCE, S57°55'51"E A DISTANCE OF 15.66 FEET TO THE BEGINNING OF A TANGENT CURVE CONCAVE TO THE LEFT;

THENCE, EASTERLY ALONG SAID CURVE AN ARC LENGTH OF 362.98 FEET, WITH A RADIUS OF 645.00 FEET AND A CENTRAL ANGLE OF 32°14'38";

THENCE, N89°49'30"E A DISTANCE OF 149.86 FEET;

THENCE, N00°10'30"W A DISTANCE OF 18.00 FEET;

THENCE, N56°02'30"E A DISTANCE OF 147.15 FEET;

THENCE, N89°49'30"E A DISTANCE OF 12.84 FEET;

THENCE, S00°10'30"E A DISTANCE OF 69.82 FEET;

THENCE, N89°49'30"E A DISTANCE OF 70.00 FEET;

THENCE, S00°10'30"E A DISTANCE OF 68.78 FEET;

THENCE, N89°48'59"E A DISTANCE OF 103.31 FEET;

THENCE, S02°19'36"W A DISTANCE OF 2613.34 FEET;

THENCE, S88°56'26"W A DISTANCE OF 895.24 FEET;

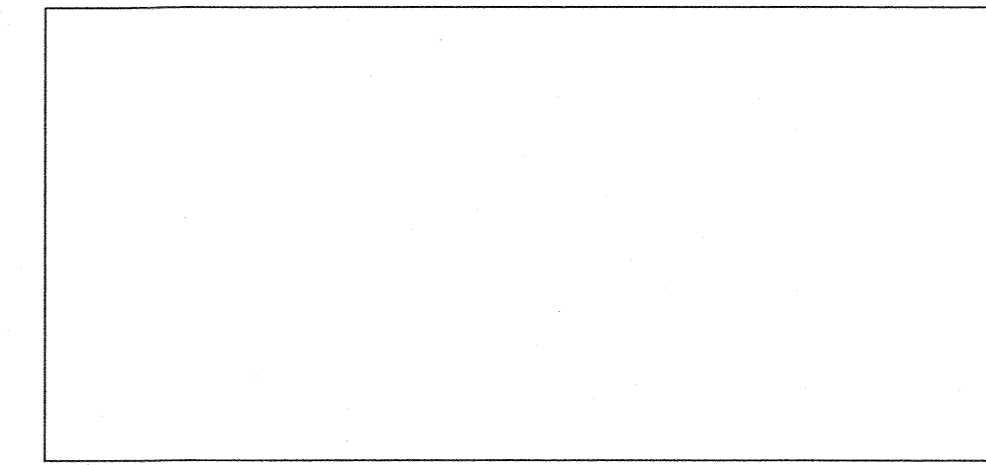
THENCE, N89°58'05"W A DISTANCE OF 1745.01 FEET;

THENCE, N00°00'35"E A DISTANCE OF 2617.96 FEET;

THENCE, S89°48'59"W A DISTANCE OF 2673.86 FEET;

THENCE, N00°11'45"W A DISTANCE OF 2652.89 FEET;

THENCE, N89°15'44"E A DISTANCE OF 1737.32 FEET TO THE POINT OF BEGINNING.

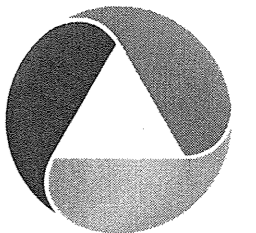


COUNTY: PINAL
SECTIONS: 16 & 17
TOWNSHIP: 4 SOUTH
RANGE: 3 EAST

RE-PLAT
MOONLIGHT "PHASE 1"
RECORDED PER FEE
NO. 2023-063952, PCR
CITY OF MARICOPA, ARIZONA

AUGUST 2024

REVISIONS:



PM. J. SPRING

DR. R. GILES

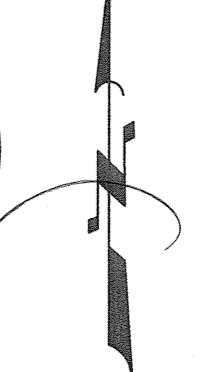
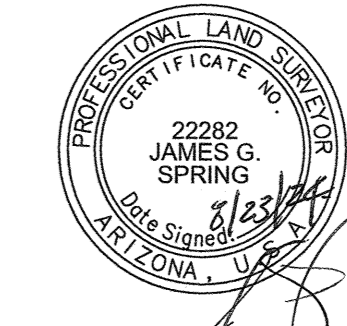
JOB NO.
20002092

N.T.S.

20002092 MOONLIGHT RE-PLAT OF BLOCK PLATING

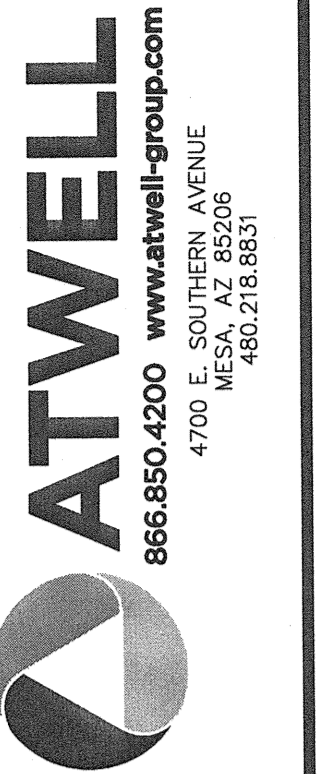
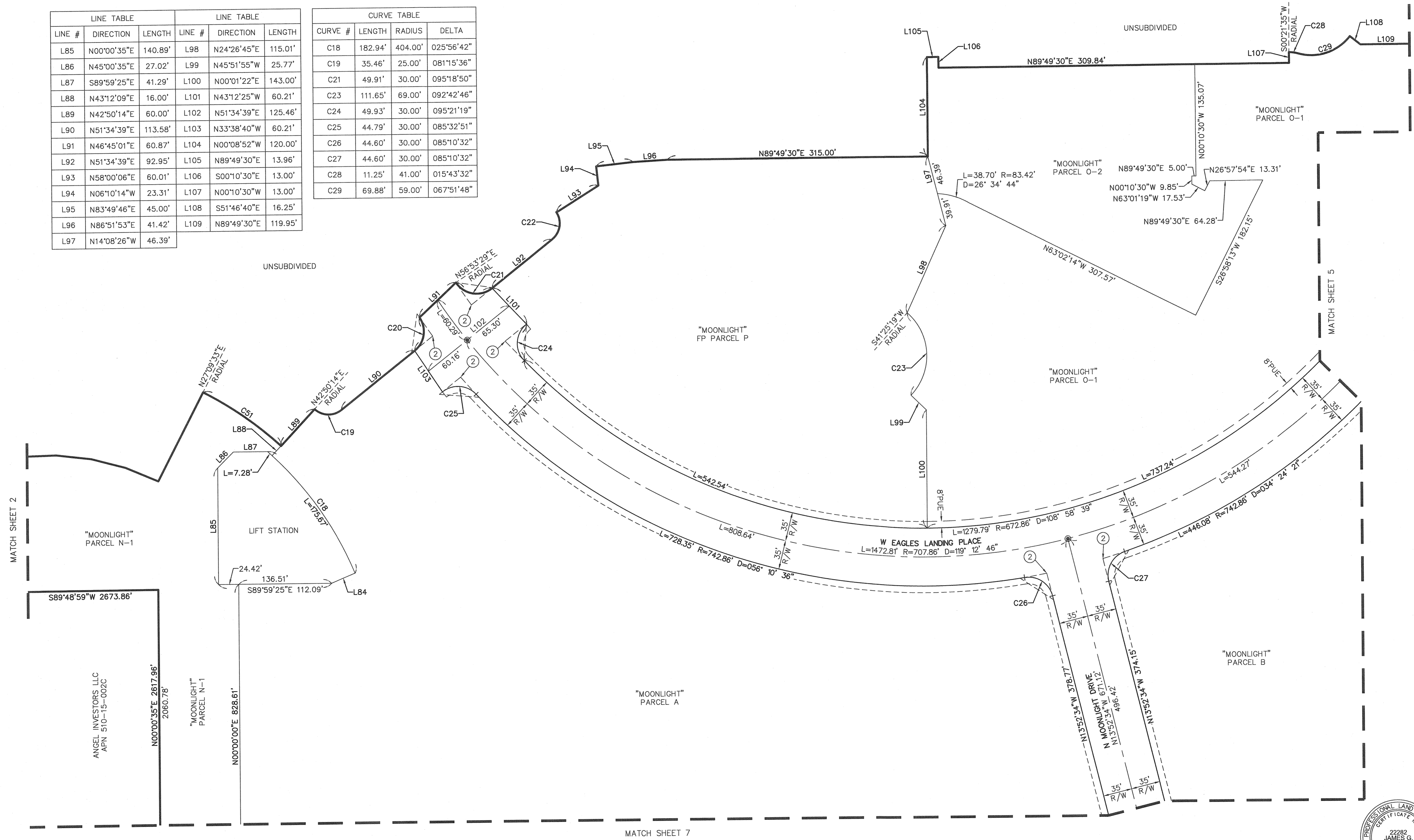
SHEET NO.

3 OF 14



LINE TABLE			LINE TABLE		
LINE #	DIRECTION	LENGTH	LINE #	DIRECTION	LENGTH
L85	N00°00'35"E	140.89'	L98	N24°26'45"E	115.01'
L86	N45°00'35"E	27.02'	L99	N45°51'55"W	25.77'
L87	S89°59'25"E	41.29'	L100	N00°01'22"E	143.00'
L88	N43°12'09"E	16.00'	L101	N43°12'25"W	60.21'
L89	N42°50'14"E	60.00'	L102	N51°34'39"E	125.46'
L90	N51°34'39"E	113.58'	L103	N33°38'40"W	60.21'
L91	N46°45'01"E	60.87'	L104	N00°08'52"W	120.00'
L92	N51°34'39"E	92.95'	L105	N89°49'30"E	13.96'
L93	N58°00'06"E	60.01'	L106	S00°10'30"E	13.00'
L94	N06°10'14"W	23.31'	L107	N00°10'30"W	13.00'
L95	N83°49'46"E	45.00'	L108	S51°46'40"E	16.25'
L96	N86°51'53"E	41.42'	L109	N89°49'30"E	119.95'
L97	N14°08'26"W	46.39'			

CURVE TABLE			
CURVE #	LENGTH	RADIUS	DELTA
C18	182.94'	404.00'	025°56'42"
C19	35.46'	25.00'	081°15'36"
C21	49.91'	30.00'	095°18'50"
C23	111.65'	69.00'	092°42'46"
C24	49.93'	30.00'	095°21'19"
C25	44.79'	30.00'	085°32'51"
C26	44.60'	30.00'	085°10'32"
C27	44.60'	30.00'	085°10'32"
C28	11.25'	41.00'	015°43'32"
C29	69.88'	59.00'	067°51'48"

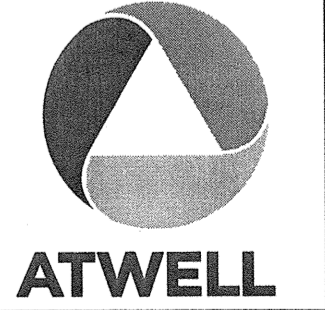


COUNTY: PINAL
 SECTIONS: 16 & 17
 TOWNSHIP: 4 SOUTH
 RANGE: 3 EAST

RE-PLAT
 MOONLIGHT "PHASE 1"
 RECORDED PER FEE
 NO. 2023-063952, PCR
 CITY OF MARICOPA, ARIZONA

AUGUST 2024

REVISIONS:



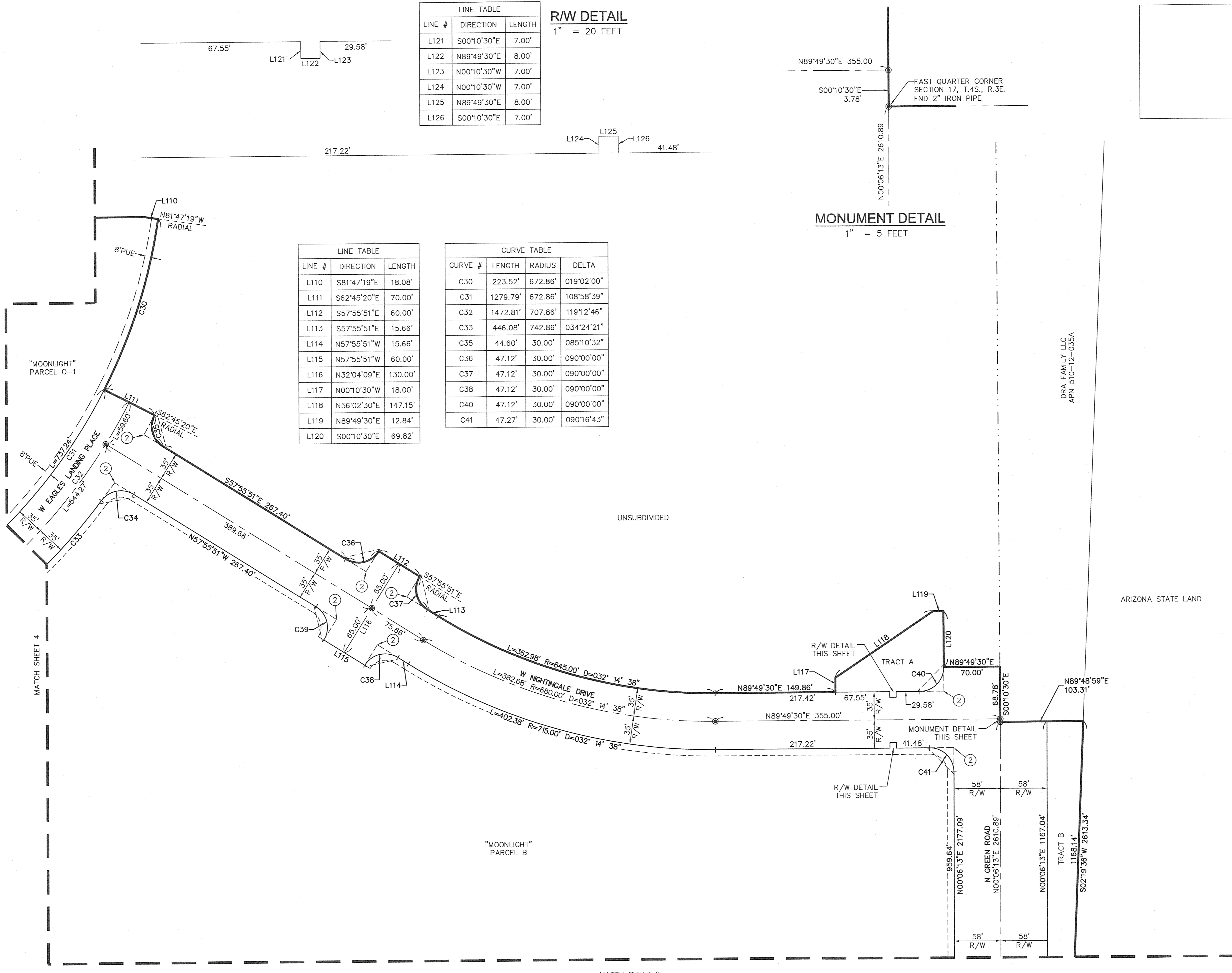
PM. J. SPRING
 DR. R. GILES
 JOB NO.
 20002092

SCALE 0 30 60
 1" = 60 FEET

20002092 MOONLIGHT RE-PLAT OF BLOCK PLATING

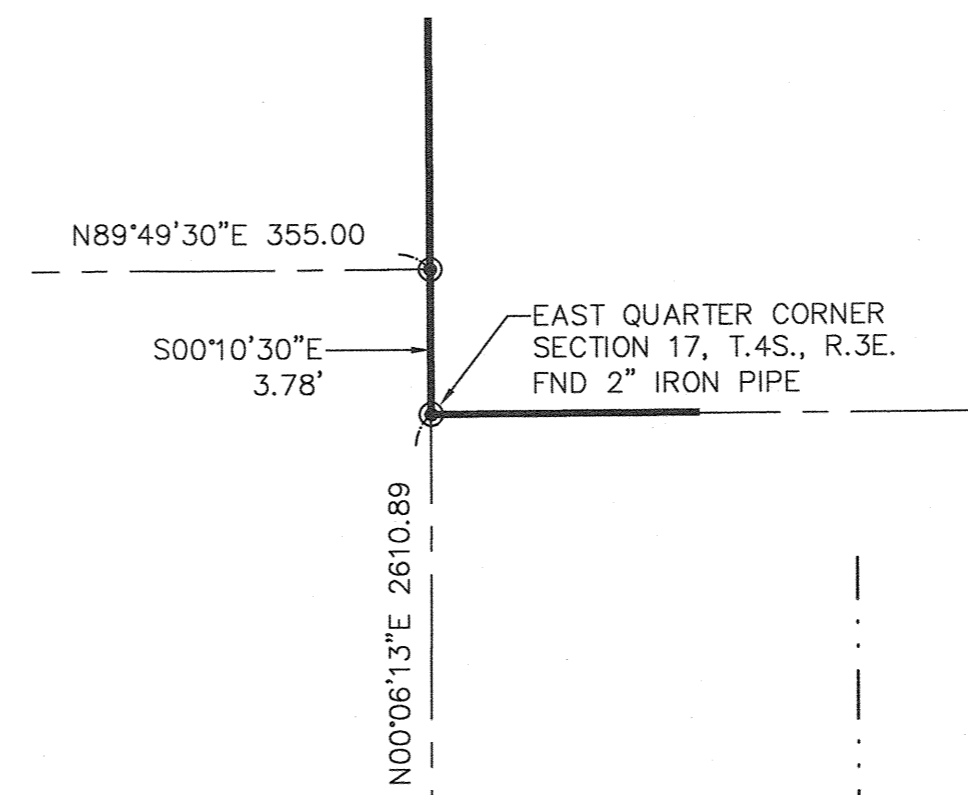
SHEET NO.
 4 OF 14

K:\20002092 - ANGLIN DAIRY\DMG SURVEY\BLOCK PLAT\BLOCK PLAT\BLOCK RE-PLAT OF BLOCK PLAT.DWG. DATE: 8/23/2024 12:39 PM. FILED: 8/23/2024 12:41 PM. COPYRIGHT © 2023 ATWELL LLC. NO REPRODUCTION SHALL BE MADE WITHOUT THE PRIOR WRITTEN CONSENT OF ATWELL LLC.



LINE TABLE		
LINE #	DIRECTION	LENGTH
L121	S00°10'30"E	7.00'
L122	N89°49'30"E	8.00'
L123	N00°10'30"W	7.00'
L124	N00°10'30"W	7.00'
L125	N89°49'30"E	8.00'
L126	S00°10'30"E	7.00'

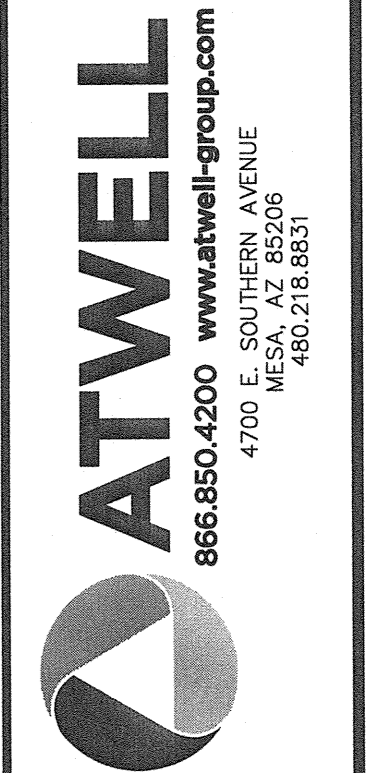
R/W DETAIL
1" = 20 FEET



MONUMENT DETAIL
1" = 5 FEET

LINE TABLE		
LINE #	DIRECTION	LENGTH
L110	S81°47'19"E	18.08'
L111	S62°45'20"E	70.00'
L112	S57°55'51"E	60.00'
L113	S57°55'51"E	15.66'
L114	N57°55'51"W	15.66'
L115	N57°55'51"W	60.00'
L116	N32°04'09"E	130.00'
L117	N00°10'30"W	18.00'
L118	N56°02'30"E	147.15'
L119	N89°49'30"E	12.84'
L120	S00°10'30"E	69.82'

CURVE TABLE			
CURVE #	LENGTH	RADIUS	DELTA
C30	223.52'	672.86'	019°02'00"
C31	1279.79'	672.86'	108°58'39"
C32	1472.81'	707.86'	119°12'46"
C33	446.08'	742.86'	034°24'21"
C35	44.60'	30.00'	085°10'32"
C36	47.12'	30.00'	090°00'00"
C37	47.12'	30.00'	090°00'00"
C38	47.12'	30.00'	090°00'00"
C40	47.12'	30.00'	090°00'00"
C41	47.27'	30.00'	090°16'43"

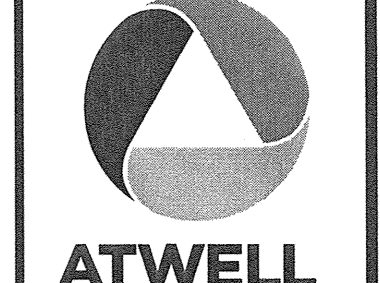


COUNTY: PINAL
SECTIONS: 16 & 17
TOWNSHIP: 4 SOUTH
RANGE: 3 EAST

RE-PLAT
MOONLIGHT "PHASE 1"
RECORDED PER FEE
NO. 2023-063952, PCR
CITY OF MARICOPA, ARIZONA

AUGUST 2024

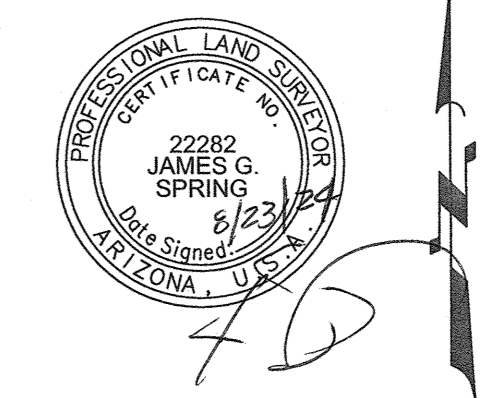
REVISIONS:



PM. J. SPRING
DR. R. GILES
JOB NO.
20002092

SCALE 0 30 60
1" = 60 FEET

20002092 MOONLIGHT RE-PLAT OF BLOCK PLATING
SHEET NO.
5 OF 14



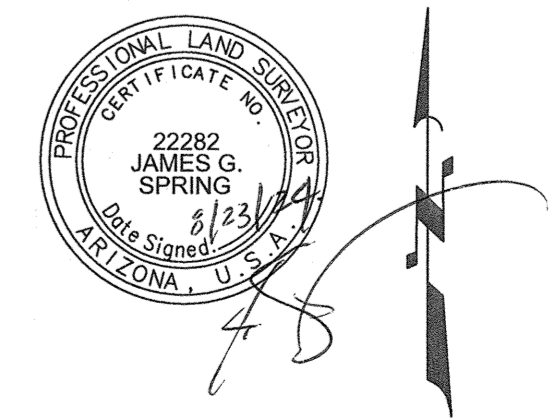
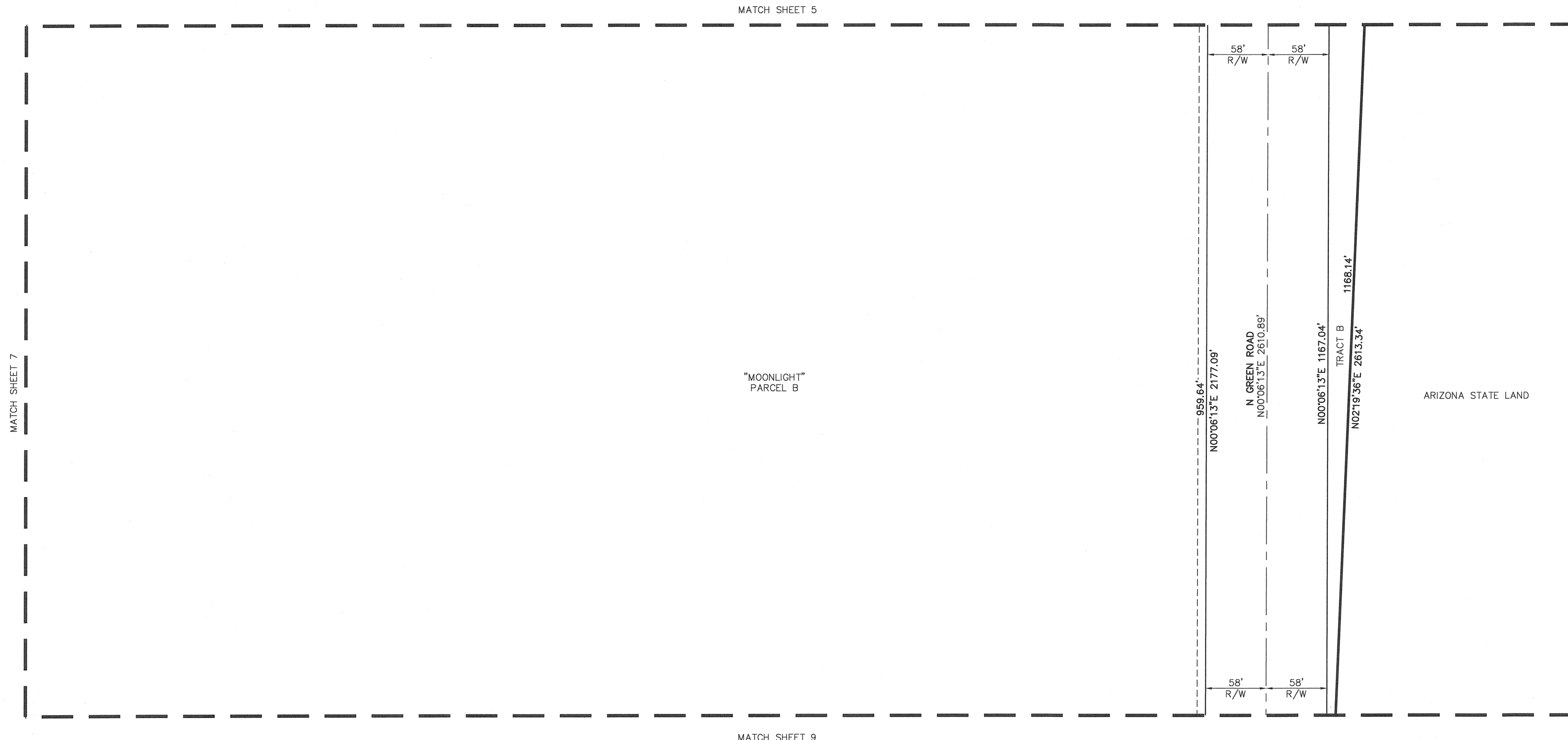
DRA FAMILY LLC
APN 510-12-035A

ARIZONA STATE LAND

MATCH SHEET 6

MATCH SHEET 4

K:\20020922 - ANGLIN DAIRY\DWG\SURVEY\BLOCK PLAT\BLOCK PLAT REVISED 06-09-2023\20002092 MOONLIGHT RE-PLAT OF BLOCK PLAT.DWG SAVDATE:8/23/2024 12:39 PM PLOTDATE:8/23/2024 12:41 PM COPYRIGHT © 2023 ATWELL LLC NO REPRODUCTION SHALL BE MADE WITHOUT THE PRIOR WRITTEN CONSENT OF ATWELL LLC

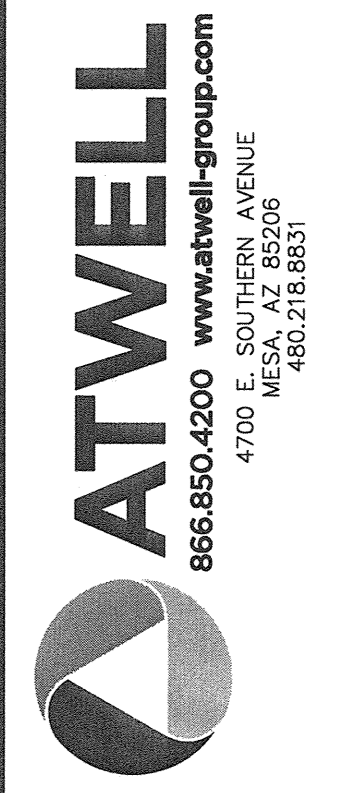
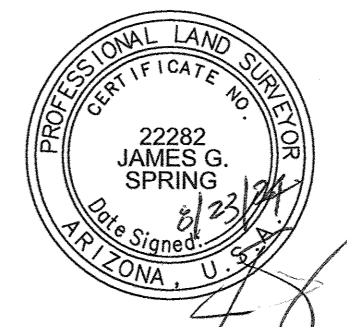
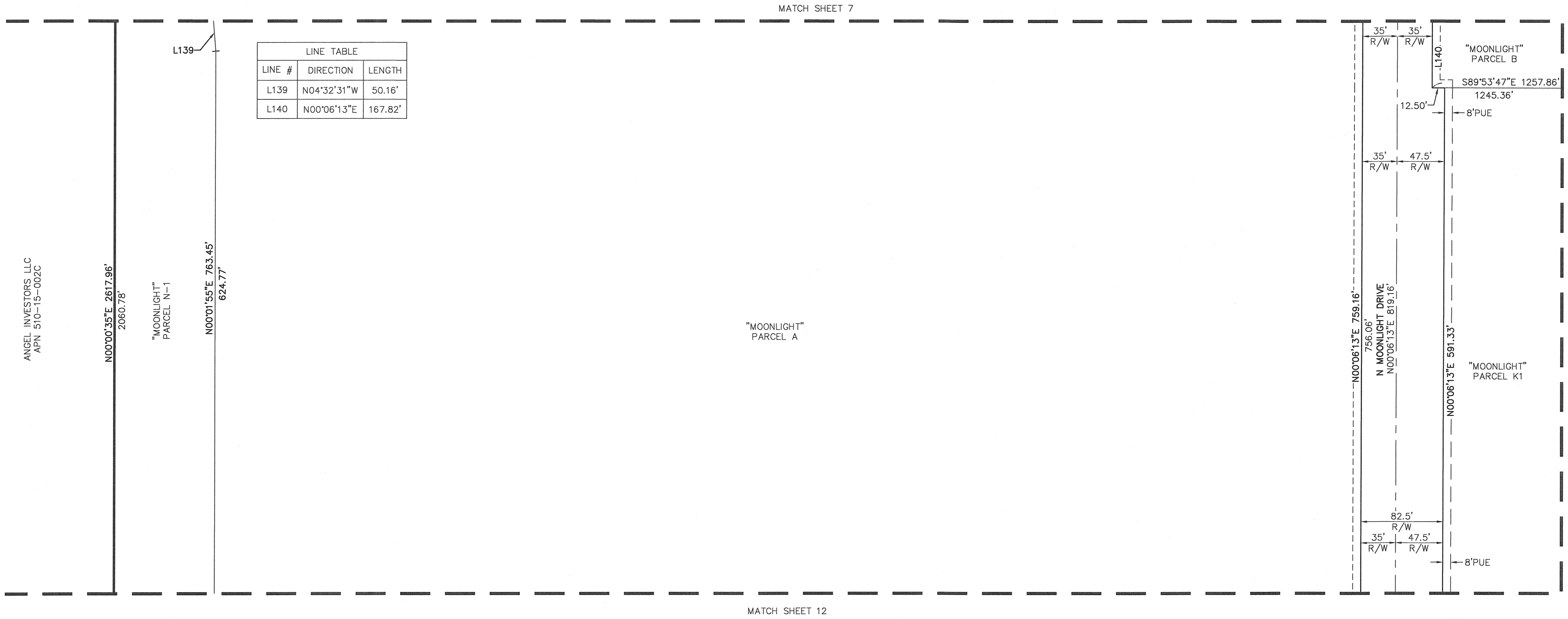




ATWELL
866.850.4200 www.atwell-group.com
4700 E. SOUTHERN AVENUE
MESA, AZ 85206
480.216.8531

<p>RE-PLAT</p> <p>MOONLIGHT "PHASE 1"</p> <p>RECORDED PER FEE</p> <p>NO. 2023-063952, PCR</p> <p><small>CITY OF MARICOPA, ARIZONA</small></p>	<p>COUNTY: PINAL</p> <p>SECTIONS: 16 & 17</p> <p>TOWNSHIP: 4 SOUTH</p> <p>RANGE: 3 EAST</p>
<p>AUGUST 2024</p>	
<p>REVISIONS:</p>	
 <p>ATWELL</p>	
<p>PM. J. SPRING</p> <p>DR. R. GILES</p> <p>JOB NO. 20002092</p>	
<p>SCALE 0 30 60</p> <p>1" = 60 FEET</p>	
<p>20002092 MOONLIGHT RE-PLAT OF BLOCK PLATING</p> <p>SHEET NO.</p> <p>6 OF 14</p>	

K:\20020922 - ANGLIN DAIRY\DWG\SURVEY\BLOCK PLAT\BLOCK PLAT\BLOCK PLAT RE-PLAT OF BLOCK PLAT.DWG SAVEDATE:8/23/2024 12:39 PM PLOTDATE:8/23/2024 12:41 PM COPYRIGHT © 2023 ATWELL LLC. NO REPRODUCTION SHALL BE MADE WITHOUT THE PRIOR WRITTEN CONSENT OF ATWELL LLC.

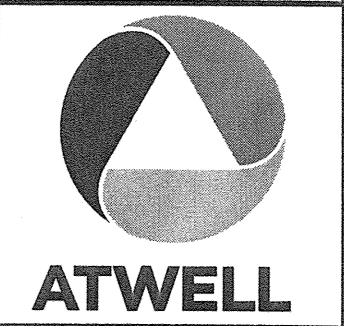


COUNTY: PINAL
 SECTIONS: 16 & 17
 TOWNSHIP: 4 SOUTH
 RANGE: 3 EAST

RE-PLAT
MOONLIGHT "PHASE 1"
RECORDED PER FEE
NO. 2023-063952, PCR
 CITY OF MARICOPA, ARIZONA

AUGUST 2024

REVISIONS:

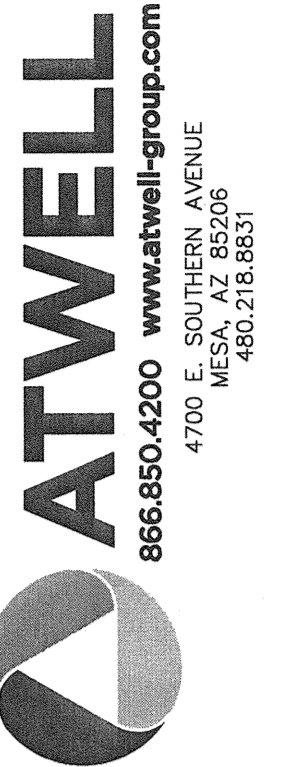
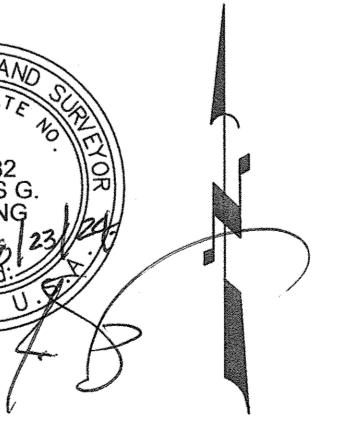
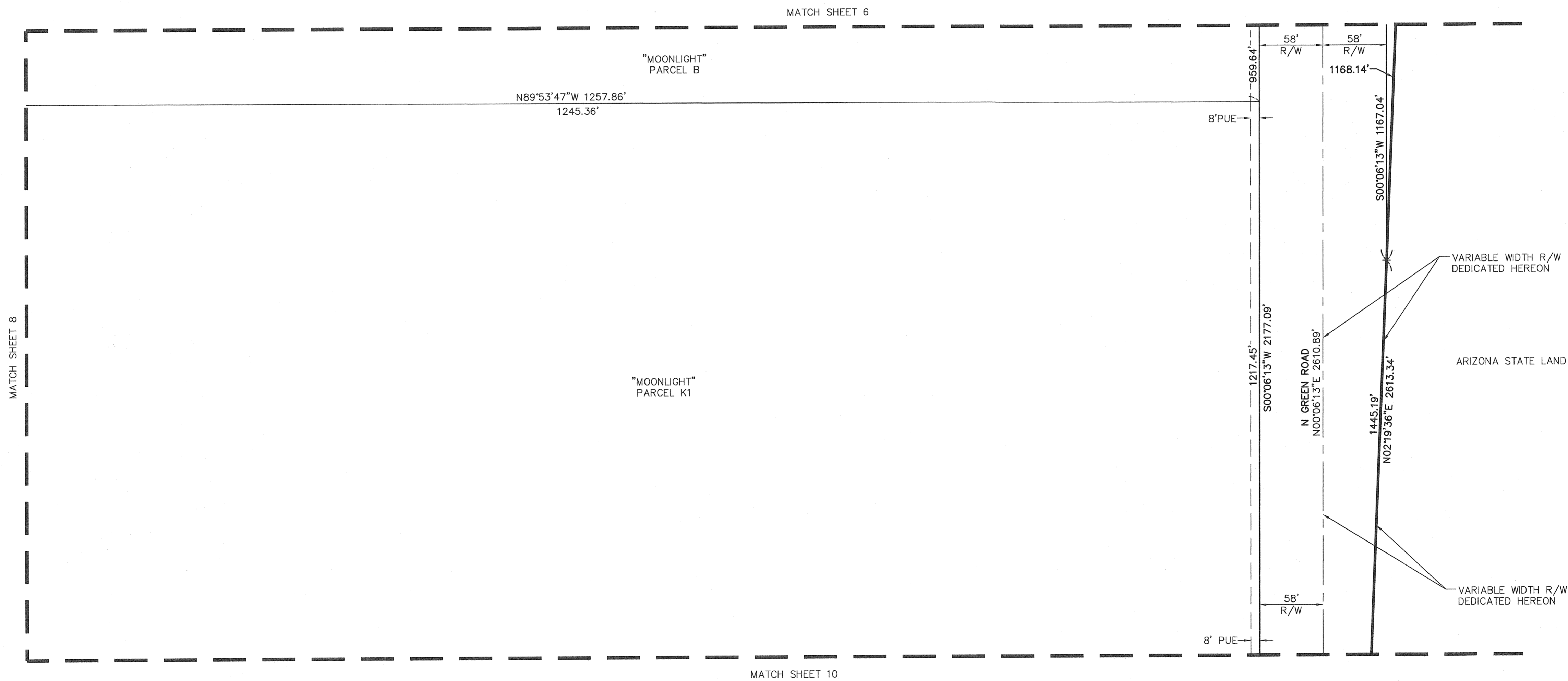


PM. J. SPRING
 DR. R. GILES
 JOB NO.
 20002092

SCALE 0 30 60
 1" = 60 FEET

20002092 MOONLIGHT RE-PLAT OF BLOCK PLATING

SHEET NO.
8 OF 14

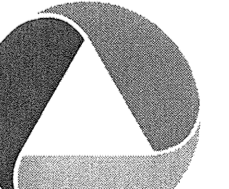


COUNTY: PINAL
 SECTIONS: 16 & 17
 TOWNSHIP: 4 SOUTH
 RANGE: 3 EAST

RE-PLAT
 MOONLIGHT "PHASE 1"
 RECORDED PER FEE
 NO. 2023-063952, PCR
 CITY OF MARICOPA, ARIZONA

AUGUST 2024

REVISIONS:



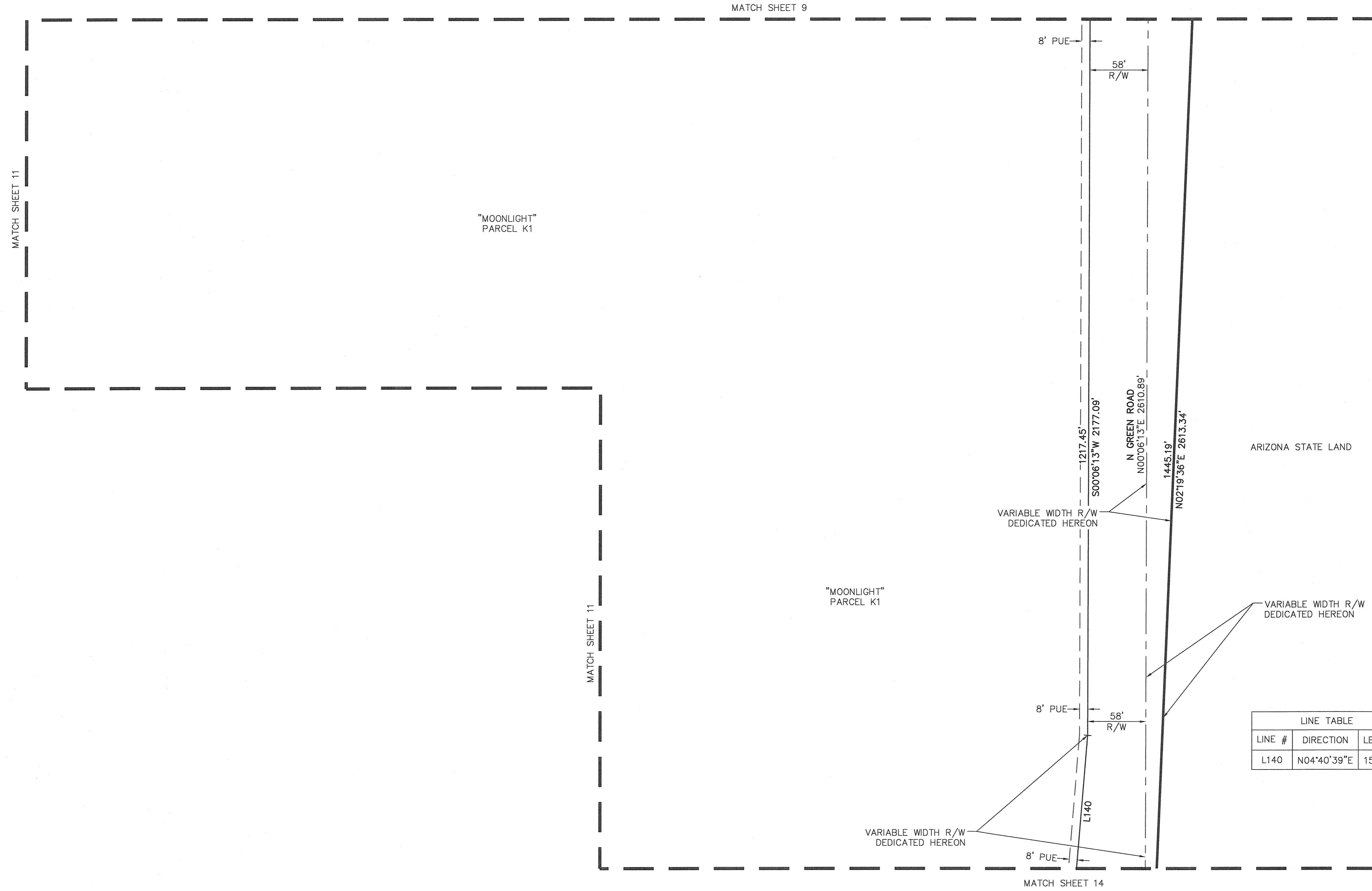
PM. J. SPRING
 DR. R. GILES
 JOB NO.
 20002092

SCALE 0 30 60
 1" = 60 FEET

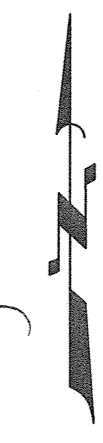
20002092 MOONLIGHT RE-PLAT OF BLOCK PLATING

SHEET NO.
 9 OF 14

K:\20002092 - ANGLIN DAIRY\DWG\SURVEY\BLOCK PLAT\BLOCK PLAT REVISED 06-09-2023\20002092 MOONLIGHT RE-PLAT OF BLOCK PLAT.DWG SAVEDATE:8/23/2024 12:39 PM PLOTDATE:8/23/2024 12:41 PM COPYRIGHT © 2023 ATWELL LLC. NO REPRODUCTION SHALL BE MADE WITHOUT THE PRIOR WRITTEN CONSENT OF ATWELL LLC



LINE TABLE		
LINE #	DIRECTION	LENGTH
L140	N04°40'39"E	150.48'



ATWELL
866.850.4200 www.atwell-group.com
4700 E. SOUTHERN AVENUE
MESA, AZ 85206
480.216.8337

COUNTY: PINAL
SECTIONS: 16 & 17
TOWNSHIP: 4 SOUTH
RANGE: 3 EAST

RE-PLAT
MOONLIGHT "PHASE 1"
RECORDED PER FEE
NO. 2023-063952, PCR
CITY OF MARICOPA, ARIZONA

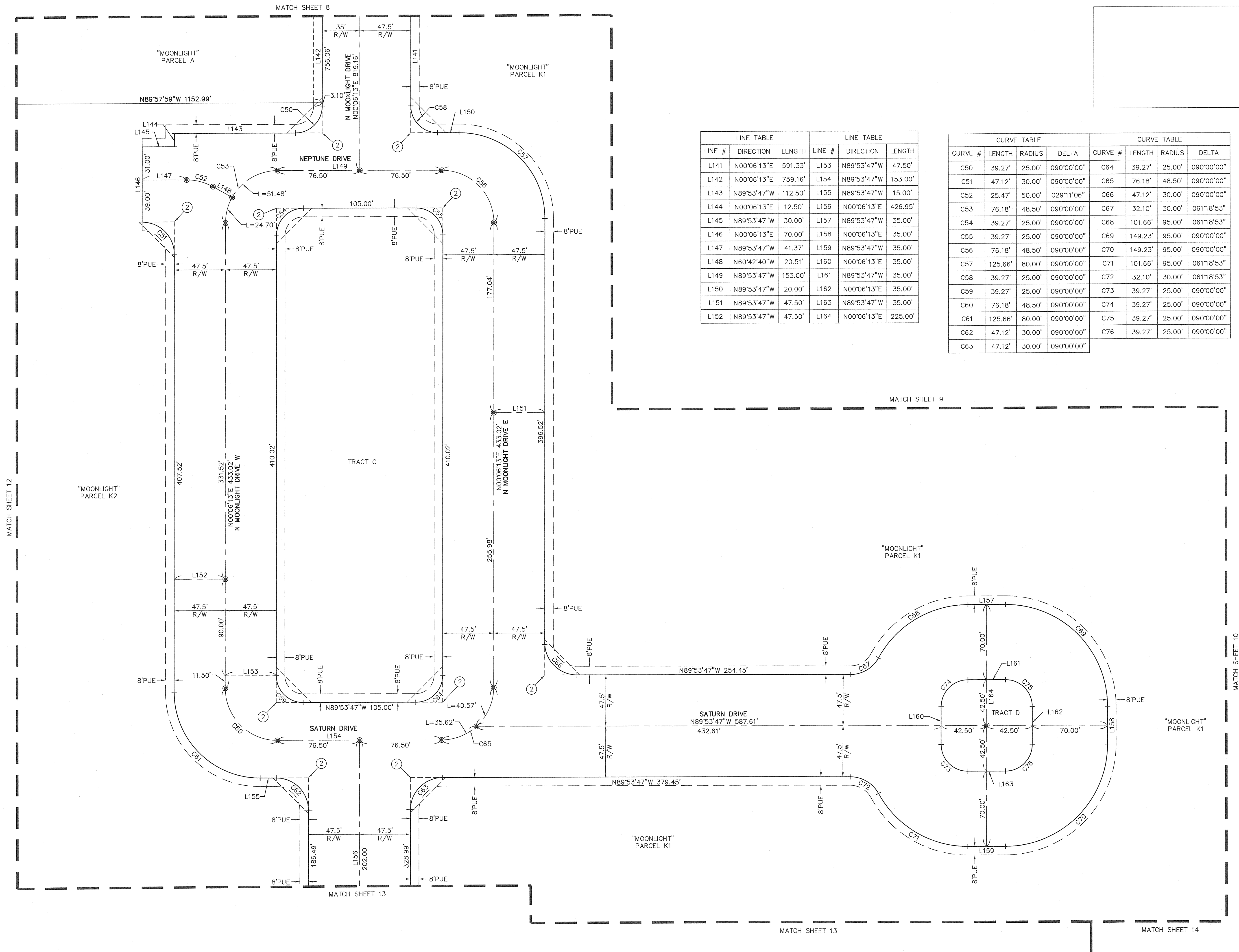
AUGUST 2024

REVISIONS:

ATWELL
P.M. J. SPRING
DR. R. GILES
JOB NO.
20002092
SCALE 0 30 60
1" = 60 FEET

20002092 MOONLIGHT RE-PLAT OF BLOCK PLATING
SHEET NO.
10 OF 14

K:\2002092 - ANGIN DAIRY\DWG\SURVEY\BLOCK PLAT\BLOCK PLAT REVISED 06-09-2023\20002092 MOONLIGHT RE-PLAT OF BLOCK PLATING SAVEDATE:8/23/2024 12:39 PM PLOTDATE:8/23/2024 12:41 PM COPYRIGHT © 2023 ATWELL LLC NO REPRODUCTION SHALL BE MADE WITHOUT THE PRIOR WRITTEN CONSENT OF ATWELL LLC



LINE TABLE			LINE TABLE		
LINE #	DIRECTION	LENGTH	LINE #	DIRECTION	LENGTH
L141	N00°06'13"E	591.33'	L153	N89°53'47"W	47.50'
L142	N00°06'13"E	759.16'	L154	N89°53'47"W	153.00'
L143	N89°53'47"W	112.50'	L155	N89°53'47"W	15.00'
L144	N00°06'13"E	12.50'	L156	N00°06'13"E	426.95'
L145	N89°53'47"W	30.00'	L157	N89°53'47"W	35.00'
L146	N00°06'13"E	70.00'	L158	N00°06'13"E	35.00'
L147	N89°53'47"W	41.37'	L159	N89°53'47"W	35.00'
L148	N60°42'40"W	20.51'	L160	N00°06'13"E	35.00'
L149	N89°53'47"W	153.00'	L161	N89°53'47"W	35.00'
L150	N89°53'47"W	20.00'	L162	N00°06'13"E	35.00'
L151	N89°53'47"W	47.50'	L163	N89°53'47"W	35.00'
L152	N89°53'47"W	47.50'	L164	N00°06'13"E	225.00'

CURVE TABLE				CURVE TABLE			
CURVE #	LENGTH	RADIUS	DELTA	CURVE #	LENGTH	RADIUS	DELTA
C50	39.27'	25.00'	090°00'00"	C64	39.27'	25.00'	090°00'00"
C51	47.12'	30.00'	090°00'00"	C65	76.18'	48.50'	090°00'00"
C52	25.47'	50.00'	029°11'06"	C66	47.12'	30.00'	090°00'00"
C53	76.18'	48.50'	090°00'00"	C67	32.10'	30.00'	061°18'53"
C54	39.27'	25.00'	090°00'00"	C68	101.66'	95.00'	061°18'53"
C55	39.27'	25.00'	090°00'00"	C69	149.23'	95.00'	090°00'00"
C56	76.18'	48.50'	090°00'00"	C70	149.23'	95.00'	090°00'00"
C57	125.66'	80.00'	090°00'00"	C71	101.66'	95.00'	061°18'53"
C58	39.27'	25.00'	090°00'00"	C72	32.10'	30.00'	061°18'53"
C59	39.27'	25.00'	090°00'00"	C73	39.27'	25.00'	090°00'00"
C60	76.18'	48.50'	090°00'00"	C74	39.27'	25.00'	090°00'00"
C61	125.66'	80.00'	090°00'00"	C75	39.27'	25.00'	090°00'00"
C62	47.12'	30.00'	090°00'00"	C76	39.27'	25.00'	090°00'00"
C63	47.12'	30.00'	090°00'00"				

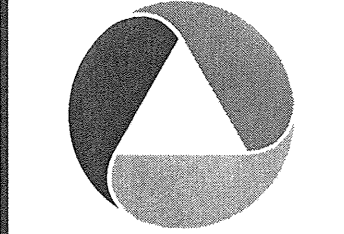


COUNTY: PINAL
 SECTIONS: 16 & 17
 TOWNSHIP: 4 SOUTH
 RANGE: 3 EAST

RE-PLAT
MOONLIGHT "PHASE 1"
RECORDED PER FEE
NO. 2023-063952, PCR
 CITY OF MARICOPA, ARIZONA

AUGUST 2024

REVISIONS:

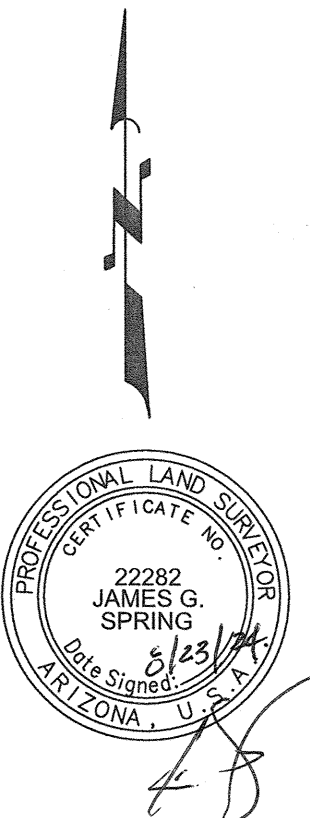


PM. J. SPRING
 DR. R. GILES
 JOB NO. 20002092

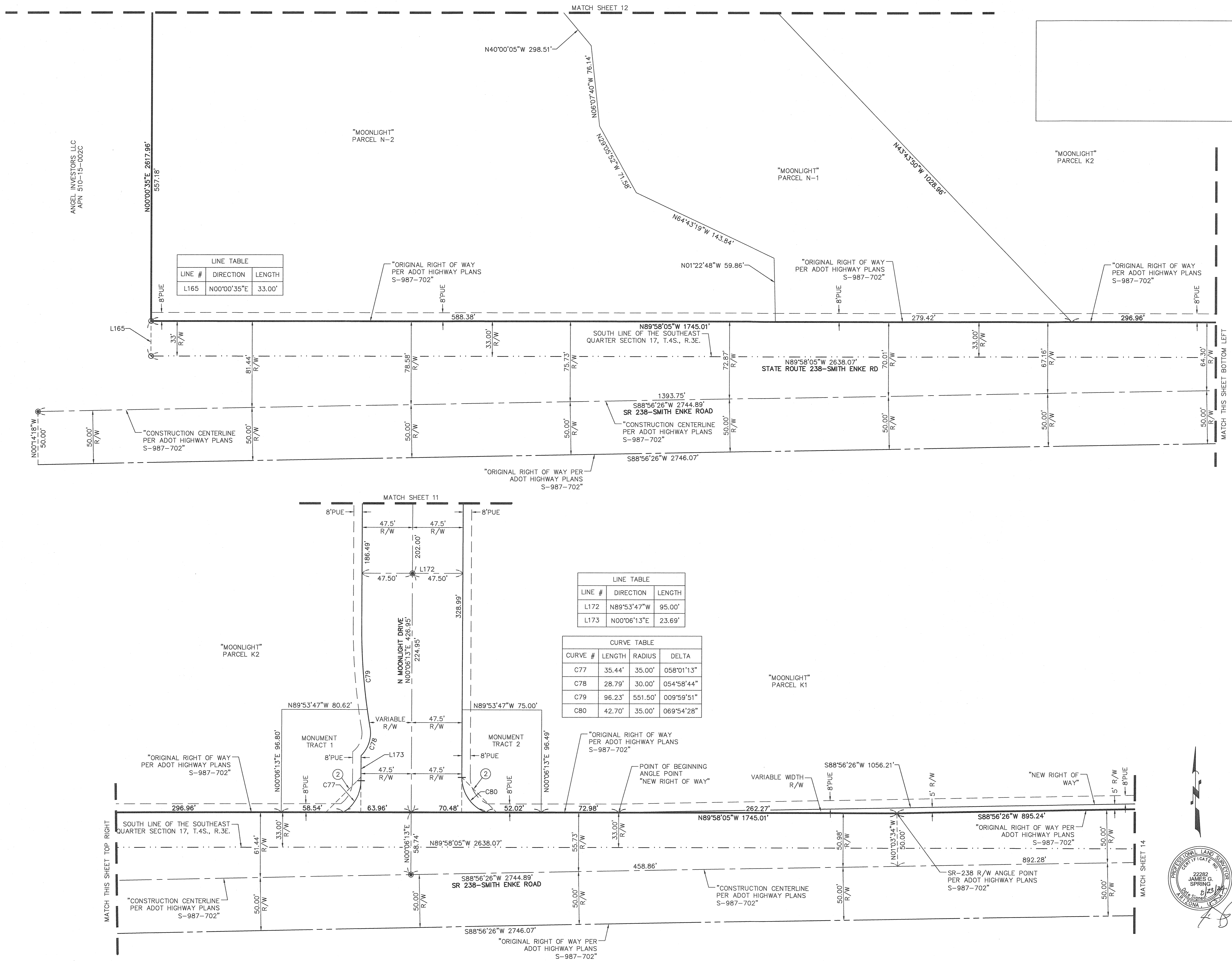
SCALE 0 20 40
 1" = 40 FEET

20002092 MOONLIGHT RE-PLAT OF BLOCK PLATING

SHEET NO. 11 OF 14



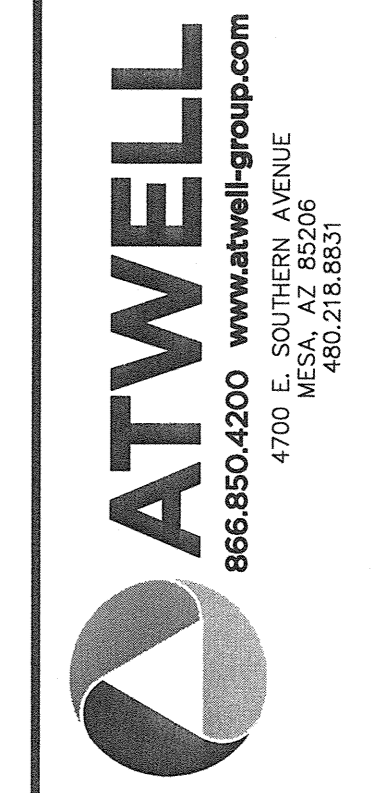
K:\20020292 - ANGLIN DAIRY\DWG\SURVEY\BLOCK PLAT\BLOCK PLAT RE-PLAT OF BLOCK PLAT.DWG SAVEDATE:8/23/2024 12:39 PM PLOTDATE:8/23/2024 12:41 PM
 COPYRIGHT © 2023 ATWELL LLC. NO REPRODUCTION SHALL BE MADE WITHOUT THE PRIOR WRITTEN CONSENT OF ATWELL LLC



LINE TABLE		
LINE #	DIRECTION	LENGTH
L165	N00°00'35"E	33.00'

LINE TABLE		
LINE #	DIRECTION	LENGTH
L172	N89°53'47"W	95.00'
L173	N00°06'13"E	23.69'

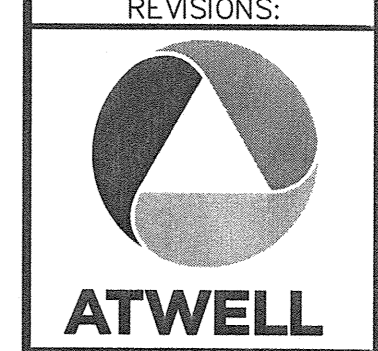
CURVE TABLE			
CURVE #	LENGTH	RADIUS	DELTA
C77	35.44'	35.00'	058°01'13"
C78	28.79'	30.00'	054°58'44"
C79	96.23'	551.50'	009°59'51"
C80	42.70'	35.00'	069°54'28"



COUNTY: PINAL
 SECTIONS: 16 & 17
 TOWNSHIP: 4 SOUTH
 RANGE: 3 EAST

RE-PLAT
 MOONLIGHT "PHASE 1"
 RECORDED PER FEE
 NO. 2023-063952, PCR
 CITY OF MARICOPA, ARIZONA

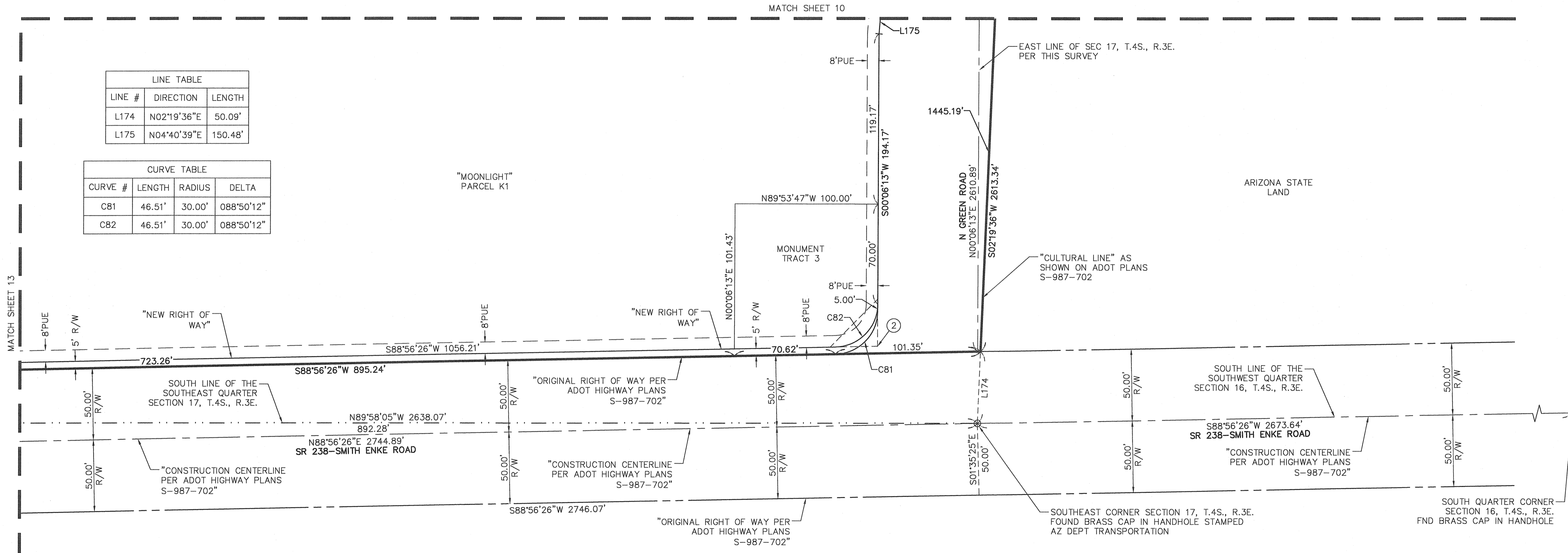
AUGUST 2024



PM. J. SPRING
 DR. R. GILES
 JOB NO.
 20020292

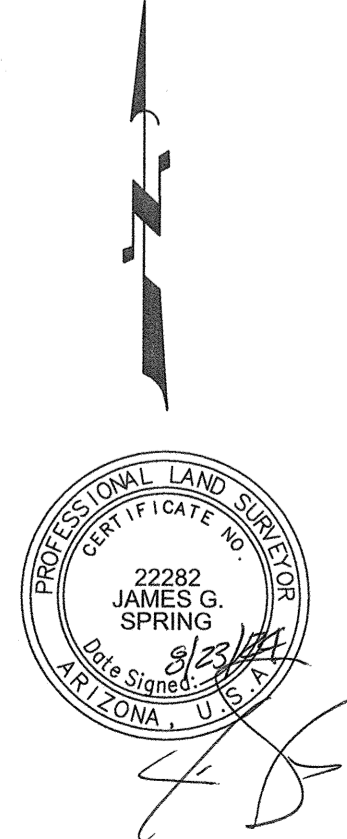
SCALE 0 20 40
 1" = 40 FEET
 SHEET NO.
 13 OF 14

K:\20002092 - ANGLIN DAIRY\DWG\SURVEY\BLOCK PLAT\BLOCK RE-PLAT OF BLOCK PLAT.DWG SAVEDATE:8/23/2024 12:39 PM PLOTDATE:8/23/2024 12:41 PM COPYRIGHT © 2023 ATWELL LLC. NO REPRODUCTION SHALL BE MADE WITHOUT THE PRIOR WRITTEN CONSENT OF ATWELL LLC.



LINE TABLE		
LINE #	DIRECTION	LENGTH
L174	N02°19'36\"E	50.09'
L175	N04°40'39\"E	150.48'

CURVE TABLE			
CURVE #	LENGTH	RADIUS	DELTA
C81	46.51'	30.00'	088°50'12\"
C82	46.51'	30.00'	088°50'12\"





ATWELL
 866.850.4200 www.atwell-group.com
 4700 E. SOUTHERN AVENUE
 PHOENIX, AZ 85036
 480.218.8831

COUNTY: PINAL
 SECTIONS: 16 & 17
 TOWNSHIP: 4 SOUTH
 RANGE: 3 EAST

RE-PLAT
MOONLIGHT "PHASE 1"
RECORDED PER FEE
NO. 2023-063952, PCR
 CITY OF MARICOPA, ARIZONA

AUGUST 2024

REVISIONS:



ATWELL
 PM. J. SPRING
 DR. R. GILES
 JOB NO.
 20002092

SCALE 0 20 40
 1" = 40 FEET

20002092 MOONLIGHT RE-PLAT OF BLOCK PLATING

SHEET NO.
14 OF 14