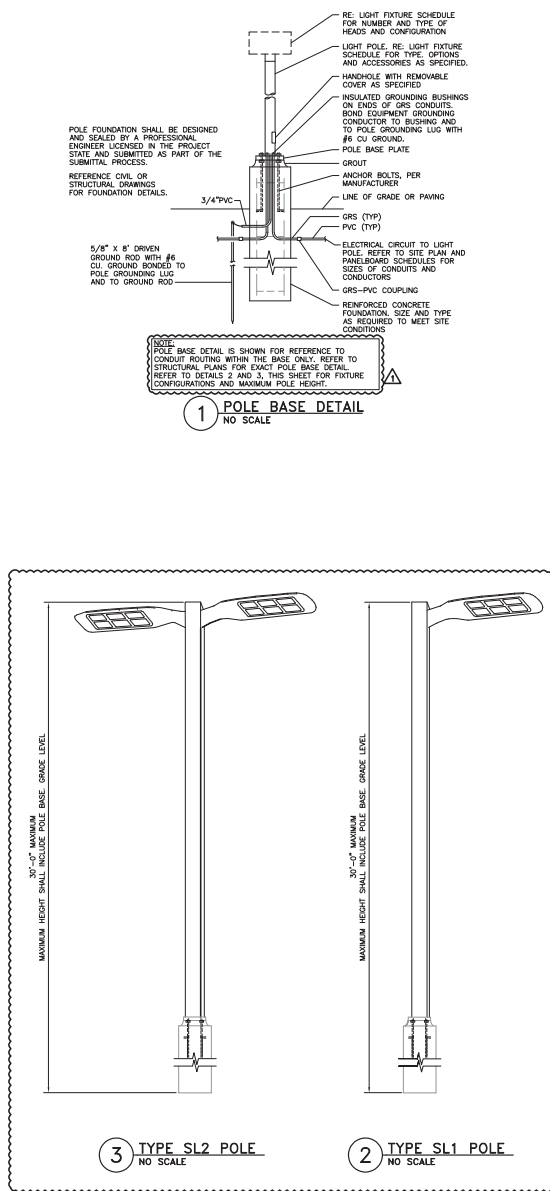


TYPE	MANUFACTURER/MODEL #	EXTERIOR LIGHT FIXTURE SCHEDULE				DESCRIPTION
		LAMPS	INPUT WATTS	INPUT VA	OUTPUT WATTS	
BL1	PRISMA ARCHITECTURAL #074424-504	F3787R/835/VECO 82 CR, 3500K 2200 LUMENS 20,000 HOURS	277	36	38	NOMINAL 3" 0" TALL X 10" ROUND GRADE MOUNTED BOLLARD WITH ROUND DOME TOP. COPPER FINISH. DE-CAST ALUMINUM HOUSING AND TWIN WHITE FINISHED EXTRUDED ALUMINUM COLUMNS. TEMPERED GLASS DIFFUSER, POLYMER GASKET WITH ALUMINUM REFLECTOR AND CLEAR PLEXIGLAS INTERIOR PANEL. FIXTURE SHALL BE MET LISTED TO UL 159. SHALL BE COMPLIANT. PROVIDE WITH UNIVERSAL VOLTAGE, IFF, PROGRAMMABLE-HARD START, NORMAL BALLAST FACTOR. <10RTHD. UL LISTED FOR WET LOCATIONS. MATE FINISH. NORMAL BALLAST FACTOR. <10RTHD. UL LISTED FOR WET LOCATIONS. MATE FINISH.
DL2	GOTHAM LIGHTING #ALD-30-22-88-277-TW OR APPROVED EQUIVALENT BY FOCAL POINT OR APPROVED EQUIVALENT BY PATHWAY LIGHTING	WHITE LED ARRAY 85 CR, 3000K 2200 LUMENS 50,000 HOURS (L70)	277	44	44	NOMINAL 8" RECESSED NEW CONSTRUCTION LED DOWNLIGHT. DE-CAST ALUMINUM SELF FLANGED HOUSING. SEMI SPECULAR REFLECTOR WITH INTEGRAL LED MIRROR CHAMBER SHIELDS DIRECT VIEW OF LEDS. DIRECT VIEW OF LEDS IS NOT ACCEPTABLE. 16-PAINTED GALVANIZED STEEL MOUNTING BARS, WITH 4" VERTICAL ADJUSTMENT. INTEGRAL HIGH EFFICIENCY LED DRIVER, >3000, 0-10V DIMMING, 5 YEAR WARRANTY. WHITE PAINTED FLANGE. NOMINAL 4" RECESSED NEW CONSTRUCTION LED DOWNLIGHT. DE-CAST ALUMINUM SELF FLANGED HOUSING. SEMI SPECULAR REFLECTOR WITH INTEGRAL LED MIRROR CHAMBER SHIELDS DIRECT VIEW OF LEDS. DIRECT VIEW OF LEDS IS NOT ACCEPTABLE. 16-GAUGE GALVANIZED STEEL MOUNTING BARS, WITH 4" VERTICAL ADJUSTMENT. INTEGRAL HIGH EFFICIENCY LED DRIVER, >3000, 0-10V DIMMING, 5 YEAR WARRANTY. WHITE PAINTED FLANGE.
DL3	GOTHAM LIGHTING #ALD-30-10-4-48-277-TW OR APPROVED EQUIVALENT BY FOCAL POINT OR APPROVED EQUIVALENT BY PATHWAY LIGHTING	WHITE LED ARRAY 85 CR, 3000K 1000 LUMENS 50,000 HOURS (L70)	277	22	22	GRADE MOUNTED LED LANDSCAPE FIXTURE WITH GROUND STAKE FOR MOUNTING. FIXTURE SHALL BE PROVIDED WITH GRADE MOUNTED LED DRIVER. COORDINATE FINISH WITH ARCHITECT PRIOR TO ORDERING. FINAL FINISH TO BE COORDINATE WITH ARCHITECT AND LANDSCAPE INSTALLER.
GL1	BLI LIGHTING #FC-LED-122-MI-VV-12-44-MOES-5K DRIVER #P29M-025-VV-MI-CPC OR APPROVED EQUIVALENT BY WINDOW LIGHTING OR APPROVED EQUIVALENT BY VISTA LIGHTING	WHITE LED ARRAY 85 CR, 3000K 1000 LUMENS 50,000 HOURS (L70)	12/277	25	25	GRADE MOUNTED LED LANDSCAPE FIXTURE WITH GROUND STAKE FOR MOUNTING. FIXTURE SHALL BE PROVIDED WITH GRADE MOUNTED LED DRIVER. COORDINATE FINISH WITH ARCHITECT PRIOR TO ORDERING. FINAL FINISH TO BE COORDINATE WITH ARCHITECT AND LANDSCAPE INSTALLER.
ML2	CALIFORNIA ACCENT LIGHTING #ALS200T-LFF-SP-BK-MED3-OK-80D-38/44-MC-1-EF-NET OR APPROVED EQUIVALENT BY TIVOLI	WHITE LED ARRAY 85 CR, 3000K 1000 LUMENS 50,000 HOURS (L70)	12/277	3.0W/171	3.0W/171	LED STRIP ARRAY TO BE INSTALLED IN LIP OF CONCRETE BENCH. COORDINATE MOUNTING DETAILS WITH ARCHITECTURAL PLANS. VERIFY ON PLAN EXACT LENGTH OF EACH FIXTURE RUN. CONTRACTOR SHALL FURNISH AND INSTALL REARTE MOUNTED LED DRIVERS AS REQUIRED. GROUP MULTIPLE FIXTURES INTO A SINGLE DRIVER WHERE EVER APPLICABLE.
RL1-8	PRUDENTIAL LIGHTING #PA3-STD-15-88-SAL-TW-01-SC-UNV-K7 OR APPROVED EQUIVALENT BY COOPER NED-RAY OR APPROVED EQUIVALENT BY ALERA LIGHTING	F21W/15/835/ECO 85 CR, 3000K 2100 LUMENS 36,000 HOURS	277	81	84	NOMINAL 8" LONG X 4" WIDE RECESSED CONTINUOUS STAGED ROW. FIXTURE SHALL HAVE DE-FORMED 20 GAUGE STEEL HOUSING WITH SMP-IN SATIN ACRYLIC LENS WITH WHITE FINISH. FURNISH WITH UNIVERSAL VOLTAGE, IFF, PROGRAMMABLE-HARD START, NORMAL BALLAST FACTOR. <10RTHD. UL LISTED FOR DAMP LOCATIONS. FURNISH WITH MATE FINISH. FURNISH WITH UNIVERSAL VOLTAGE, IFF, PROGRAMMABLE-HARD START, NORMAL BALLAST FACTOR. <10RTHD. UL LISTED FOR DAMP LOCATIONS.
RL1-12	PRUDENTIAL LIGHTING #PA3-STD-15-812-SAL-TW-01-SC-UNV-K7 OR APPROVED EQUIVALENT BY COOPER NED-RAY OR APPROVED EQUIVALENT BY ALERA LIGHTING	F21W/15/835/ECO 85 CR, 3000K 2100 LUMENS 36,000 HOURS	277	127	132	NOMINAL 12" LONG X 4" WIDE RECESSED CONTINUOUS STAGED ROW. FIXTURE SHALL HAVE DE-FORMED 20 GAUGE STEEL HOUSING WITH SMP-IN SATIN ACRYLIC LENS WITH WHITE FINISH. FURNISH WITH UNIVERSAL VOLTAGE, IFF, PROGRAMMABLE-HARD START, NORMAL BALLAST FACTOR. <10RTHD. UL LISTED FOR DAMP LOCATIONS. FURNISH WITH MATE FINISH. FURNISH WITH UNIVERSAL VOLTAGE, IFF, PROGRAMMABLE-HARD START, NORMAL BALLAST FACTOR. <10RTHD. UL LISTED FOR DAMP LOCATIONS.
RL1-20	PRUDENTIAL LIGHTING #PA3-STD-15-820-SAL-TW-01-SC-UNV-K7 OR APPROVED EQUIVALENT BY COOPER NED-RAY OR APPROVED EQUIVALENT BY ALERA LIGHTING	F21W/15/835/ECO 85 CR, 3000K 2100 LUMENS 36,000 HOURS	277	201	208	NOMINAL 20" LONG X 4" WIDE RECESSED CONTINUOUS STAGED ROW. FIXTURE SHALL HAVE DE-FORMED 20 GAUGE STEEL HOUSING WITH SMP-IN SATIN ACRYLIC LENS WITH WHITE FINISH. FURNISH WITH UNIVERSAL VOLTAGE, IFF, PROGRAMMABLE-HARD START, NORMAL BALLAST FACTOR. <10RTHD. UL LISTED FOR DAMP LOCATIONS. FURNISH WITH MATE FINISH. FURNISH WITH UNIVERSAL VOLTAGE, IFF, PROGRAMMABLE-HARD START, NORMAL BALLAST FACTOR. <10RTHD. UL LISTED FOR DAMP LOCATIONS.
RL2-8	PRUDENTIAL LIGHTING #PA4-STD-15-88-SAL-CC-D1-SC-UNV-WM OR APPROVED EQUIVALENT BY COOPER NED-RAY OR APPROVED EQUIVALENT BY ALERA LIGHTING	F21W/15/835/ECO 85 CR, 3000K 2100 LUMENS 36,000 HOURS	277	81	84	NOMINAL 8" LONG X 8" WIDE RECESSED CONTINUOUS STAGED ROW. FIXTURE SHALL HAVE DE-FORMED 20 GAUGE STEEL HOUSING WITH SMP-IN SATIN ACRYLIC LENS WITH WHITE FINISH. FURNISH WITH UNIVERSAL VOLTAGE, IFF, PROGRAMMABLE-HARD START, NORMAL BALLAST FACTOR. <10RTHD. UL LISTED FOR DAMP LOCATIONS. FURNISH WITH MATE FINISH. FURNISH WITH UNIVERSAL VOLTAGE, IFF, PROGRAMMABLE-HARD START, NORMAL BALLAST FACTOR. <10RTHD. UL LISTED FOR DAMP LOCATIONS. FURNISH WITH MATE FINISH. FURNISH WITH UNIVERSAL VOLTAGE, IFF, PROGRAMMABLE-HARD START, NORMAL BALLAST FACTOR. <10RTHD. UL LISTED FOR DAMP LOCATIONS.
RL2-12	PRUDENTIAL LIGHTING #PA4-STD-15-812-SAL-TW-01-SC-UNV-WM OR APPROVED EQUIVALENT BY COOPER NED-RAY OR APPROVED EQUIVALENT BY ALERA LIGHTING	F21W/15/835/ECO 85 CR, 3000K 2100 LUMENS 36,000 HOURS	277	127	132	NOMINAL 12" LONG X 8" WIDE RECESSED CONTINUOUS STAGED ROW. FIXTURE SHALL HAVE DE-FORMED 20 GAUGE STEEL HOUSING WITH SMP-IN SATIN ACRYLIC LENS WITH WHITE FINISH. FURNISH WITH UNIVERSAL VOLTAGE, IFF, PROGRAMMABLE-HARD START, NORMAL BALLAST FACTOR. <10RTHD. UL LISTED FOR DAMP LOCATIONS. FURNISH WITH MATE FINISH. FURNISH WITH UNIVERSAL VOLTAGE, IFF, PROGRAMMABLE-HARD START, NORMAL BALLAST FACTOR. <10RTHD. UL LISTED FOR DAMP LOCATIONS. FURNISH WITH MATE FINISH. FURNISH WITH UNIVERSAL VOLTAGE, IFF, PROGRAMMABLE-HARD START, NORMAL BALLAST FACTOR. <10RTHD. UL LISTED FOR DAMP LOCATIONS.
RL2-20	PRUDENTIAL LIGHTING #PA4-STD-15-820-SAL-TW-01-SC-UNV-WM OR APPROVED EQUIVALENT BY COOPER NED-RAY OR APPROVED EQUIVALENT BY ALERA LIGHTING	F21W/15/835/ECO 85 CR, 3000K 2100 LUMENS 36,000 HOURS	277	201	208	NOMINAL 20" LONG X 8" WIDE RECESSED CONTINUOUS STAGED ROW. FIXTURE SHALL HAVE DE-FORMED 20 GAUGE STEEL HOUSING WITH SMP-IN SATIN ACRYLIC LENS WITH WHITE FINISH. FURNISH WITH UNIVERSAL VOLTAGE, IFF, PROGRAMMABLE-HARD START, NORMAL BALLAST FACTOR. <10RTHD. UL LISTED FOR DAMP LOCATIONS. FURNISH WITH MATE FINISH. FURNISH WITH UNIVERSAL VOLTAGE, IFF, PROGRAMMABLE-HARD START, NORMAL BALLAST FACTOR. <10RTHD. UL LISTED FOR DAMP LOCATIONS. FURNISH WITH MATE FINISH. FURNISH WITH UNIVERSAL VOLTAGE, IFF, PROGRAMMABLE-HARD START, NORMAL BALLAST FACTOR. <10RTHD. UL LISTED FOR DAMP LOCATIONS.
RL3	PRUDENTIAL LIGHTING #PA4-STD-04-04-SAL-TW-01-SC-UNV-0488 OR APPROVED EQUIVALENT BY COOPER NED-RAY OR APPROVED EQUIVALENT BY ALERA LIGHTING	F28W/15/835/ECO 85 CR, 3000K 2900 LUMENS 36,000 HOURS	27	33	34	NOMINAL 4" LONG X 4" WIDE PENDANT MOUNTED LINEAR FLUORESCENT. FIXTURE SHALL HAVE DE-FORMED 20 GAUGE STEEL HOUSING WITH SMP-IN SATIN ACRYLIC LENS WITH WHITE FINISH. FURNISH WITH UNIVERSAL VOLTAGE, IFF, PROGRAMMABLE-HARD START, NORMAL BALLAST FACTOR. <10RTHD. UL LISTED FOR DAMP LOCATIONS. FURNISH WITH 48" AIRCRAFT CABLE AND FIELD ADJUST TO BE MOUNTED SO THAT BOTTOM OF FIXTURE IS 9'-0" AFF.
SL1	LITHONIA LIGHTING - D SERIES SIZE 2 #E2D LED-1-1208530/40K-FT-277-SP-5F-DWVD LITHONIA LIGHTING - STANDARD STEEL POLE #SS-30-0.0X0.0-188-0428S-DNA MOUNTING - SINGLE (FIXTURE 180 CONNECTION)	120 LED ARRAY 4000K 18,843 LUMENS 67 CR 25,000HRS @ 92LM/F	277	210	211	NOMINAL 40" LONG X 15" WIDE LOW PROFILE CAST ALUMINUM SITE LIGHT FIXTURE. FIXTURE SHALL BE PROVIDED WITH 30" STEEL SQUARE POLE MOUNT ON A CONCRETE BASE. DRIVER SHALL BE A 27V ELECTRONIC DRIVER, 520MA DRIVE CURRENT WITH GREATER THAN A 90% POWER FACTOR AND GREATER THAN 200 THD. FIXTURE SHALL BE PROVIDED WITH INTEGRAL LOW SURGE SUPPRESSION PROTECTION STANDARD. ELECTRICAL CONNECTION HOUSING SHALL BE INTERNAL TO FIXTURE. WEATHER TIGHT AND EASILY ACCESSIBLE FOR QUICK CONNECTION. FIXTURE SHALL BE UL LISTED FOR WET LOCATIONS. FIXTURE AND POLE FINISH SHALL BE NATURAL ALUMINUM. FIXTURE SHALL BE MOUNTED AS A SINGLE FIXTURE BUT SHALL PATTERNS SHALL BE FOR 2 FIXTURES AT 180 DEGREES FOR THE ADDITION OF FIXTURE. PROVIDE ALL NECESSARY MOUNTING BRACKETS AS REQUIRED FOR A COMPLETE INSTALLATION. REFER TO STRUCTURE PLANS FOR POLE BASE DETAILS AND DIMENSIONS. ADJUST POLE HEIGHT TO ENSURE FIXTURE DOES NOT EXCEED 30'-0" ABOVE GRADE MAXIMUM.
SL2	LITHONIA LIGHTING - D SERIES SIZE 2 #2 - DSX2 LED-1-1208530/40K-9FS-277-SP-5F-DWVD LITHONIA LIGHTING - STANDARD STEEL POLE #SS-30-0.0X0.0-188-0428S-DNA MOUNTING - DOUBLE	240 LED ARRAY 4000K 18,843 LUMENS 67 CR 25,000HRS @ 92LM/F	277	420	422	NOMINAL 40" LONG X 15" WIDE LOW PROFILE CAST ALUMINUM SITE LIGHT FIXTURE. FIXTURE SHALL BE PROVIDED WITH 30" STEEL SQUARE POLE MOUNT ON A CONCRETE BASE. DRIVER SHALL BE A 27V ELECTRONIC DRIVER, 520MA DRIVE CURRENT WITH GREATER THAN A 90% POWER FACTOR AND GREATER THAN 200 THD. FIXTURE SHALL BE PROVIDED WITH INTEGRAL LOW SURGE SUPPRESSION PROTECTION STANDARD. ELECTRICAL CONNECTION HOUSING SHALL BE INTERNAL TO FIXTURE. WEATHER TIGHT AND EASILY ACCESSIBLE FOR QUICK CONNECTION. FIXTURE SHALL BE UL LISTED FOR WET LOCATIONS. FIXTURE AND POLE FINISH SHALL BE NATURAL ALUMINUM. FIXTURE SHALL BE MOUNTED AS A DOUBLE (BACK TO BACK) FIXTURE. PROVIDE ALL NECESSARY MOUNTING BRACKETS AS REQUIRED FOR A COMPLETE INSTALLATION. REFER TO STRUCTURE PLANS FOR POLE BASE DETAILS AND DIMENSIONS. ADJUST POLE HEIGHT TO ENSURE FIXTURE DOES NOT EXCEED 30'-0" ABOVE GRADE MAXIMUM.
WP1	LITHONIA LIGHTING #FST LED-3-10470/40K-583-MOUL-0080D OR APPROVED EQUIVALENT BY MCGRAW / EDISON OR APPROVED EQUIVALENT BY NUMEROUS	20 LED ARRAY 4000K 4028 LUMENS, 70 CR	277	47	47	NOMINAL 16" X 16" LED WALL SCONCE. FIXTURE SHALL BE SURFACE MOUNTED TO FACE OF MASONRY WALL WITH BOTTOM OF FIXTURE MOUNTED 9'-0" ABOVE FINISHED GRADE. FINISH SHALL BE DARK BRONZE.



**NOTE:** THIS IS A MASTER LEGEND AND NOT ALL SYMBOLS ABBREVIATIONS, ETC. ARE NECESSARILY LISTED ON THE DRAWINGS.

### ELECTRICAL SYMBOLS

**LIGHTING**

- Light fixture symbol: SEE LIGHT FIXTURE SCHEDULE
- Light fixture with night light symbol: LIGHT FIXTURE WITH NIGHT LIGHT
- Emergency light fixture symbol: EMERGENCY LIGHT FIXTURE WITH EMERGENCY LIGHTING BATTERY PACK OR CONNECTED TO EMERGENCY SOURCE
- Light fixture with dual ballasts symbol: LIGHT FIXTURE WITH DUAL BALLASTS CIRCUITED SEPARATELY. (DIMMING IMPLIES EMERGENCY LIGHT FIXTURES)
- Lighting track symbol: LIGHTING TRACK WITH LIGHT FIXTURE TYPES AS INDICATED
- Mirror lighting symbol: MIRROR LIGHTING
- Site lighting symbol: SITE LIGHTING FIXTURE
- Exit sign symbol: EXIT SIGN - CEILING / WALL MOUNTED, ARROWS AS INDICATED
- Emergency battery pack symbol: EMERGENCY BATTERY PACK LIGHT FIXTURE - CEILING/WALL MOUNTED
- Evaluation assist symbol: AREA (AREA FOR EVALUATION ASSISTANCE) SIGN - CEILING/WALL MOUNTED, ARROWS AS INDICATED

**SECURITY**

- GPU & monitor symbol: GPU & MONITOR (ELEVATION) WITH PERIPHERAL DEVICES
- GPU & monitor (pan view) symbol: GPU & MONITOR (PAN VIEW) WITH PERIPHERAL DEVICES
- Closed circuit TV symbol: CLOSED CIRCUIT TELEVISION
- CCTV (pan tilt zoom) symbol: CCTV (PAN TILT ZOOM)
- Request to exit button symbol: REQUEST TO EXIT BUTTON
- Electric door lock symbol: ELECTRIC DOOR LOCK
- Panic button symbol: PANIC BUTTON (D= DESK W= WALL F= FLOOR)
- Card reader symbol: CARD READER
- Door monitor symbol: DOOR MONITOR
- Glass break symbol: GLASS BREAK
- Key pad symbol: KEY PAD
- Motion detector symbol: MOTION DETECTOR
- Watch tour symbol: WATCH TOUR

**STANDARD MOUNTING HEIGHTS (FT., APL UNLESS NOTED OTHERWISE)**

ADJUSTABLE APPLIANCES (CENTERLINE)	64"
ALARMS	48"
ANNUNCIATOR PANELS	48"
CLOCK OUTLETS (CENTERLINE)	84"
CONTROLS (CENTERLINE)	48"
EXIT SIGNS (WALL MOUNTED, BOTTOM)	60"
FIRE ALARM ANNUNCIATOR PANEL (DISPLAY)	120"
FIRE ALARM BELL (EXTERIOR)	60"
FIRE ALARM CONTROL PANEL/JAM (DISPLAY)	60"
INTERCOM (AREA ONLY)	36"
INTERCOMS	48"
PANELS/PANELBOARDS (TOP)	72"
PULL STATIONS (HANDLE)	28"
PHOTOCOPIERS (CENTERLINE)	144"
RECEPTACLES (CENTERLINE)	18"
RECEPTACLES (EXTERIOR)	24"
RECEPTACLES (GARAGES)	28"
RECEPTACLES IN EQUIPMENT ROOMS	48"
REMOTE INDICATING LIGHT (EQUIPMENT ROOMS)	48"
REMOTE INDICATING LIGHT (FINISHED AREAS)	CEILING
SAFETY SWITCHES	48"
SWITCHES	48"
SWITCHES (CENTERLINE)	48"
TELEPHONES (PUBLIC)	1 @ 48", 1 @ 36"
TELEPHONE DATA OUTLETS (CENTERLINE)	18"
TELEPHONE TERMINAL BOARD (BOTTOM)	6"
TELEVISION OUTLETS	48"
VISIBLE APPLIANCES (CENTERLINE)	64"

ARCHITEKTION

464 S Farmer Ave., Suite 101  
Tempe AZ, 85281  
T 480.304.4837  
F 480.304.4038  
www.architekton.com

**HENDERSON ENGINEERS**  
7330 NORTH 16TH STREET, SUITE 1110  
PHOENIX, AZ 85024  
TEL 480.254.5259 FAX 480.254.5201  
www.henderson-engineers.com  
159001231 1/04/2016  
42 CONSTRUCTION PERMITS  
ISSUED 04/20/13

**MULTI-GENERATIONAL CENTER AND AQUATICS FACILITY**  
City of Maricopa

No Description | Date  
ORR COMMENTS 08/01/12

PERMIT SET  
07/27/2012

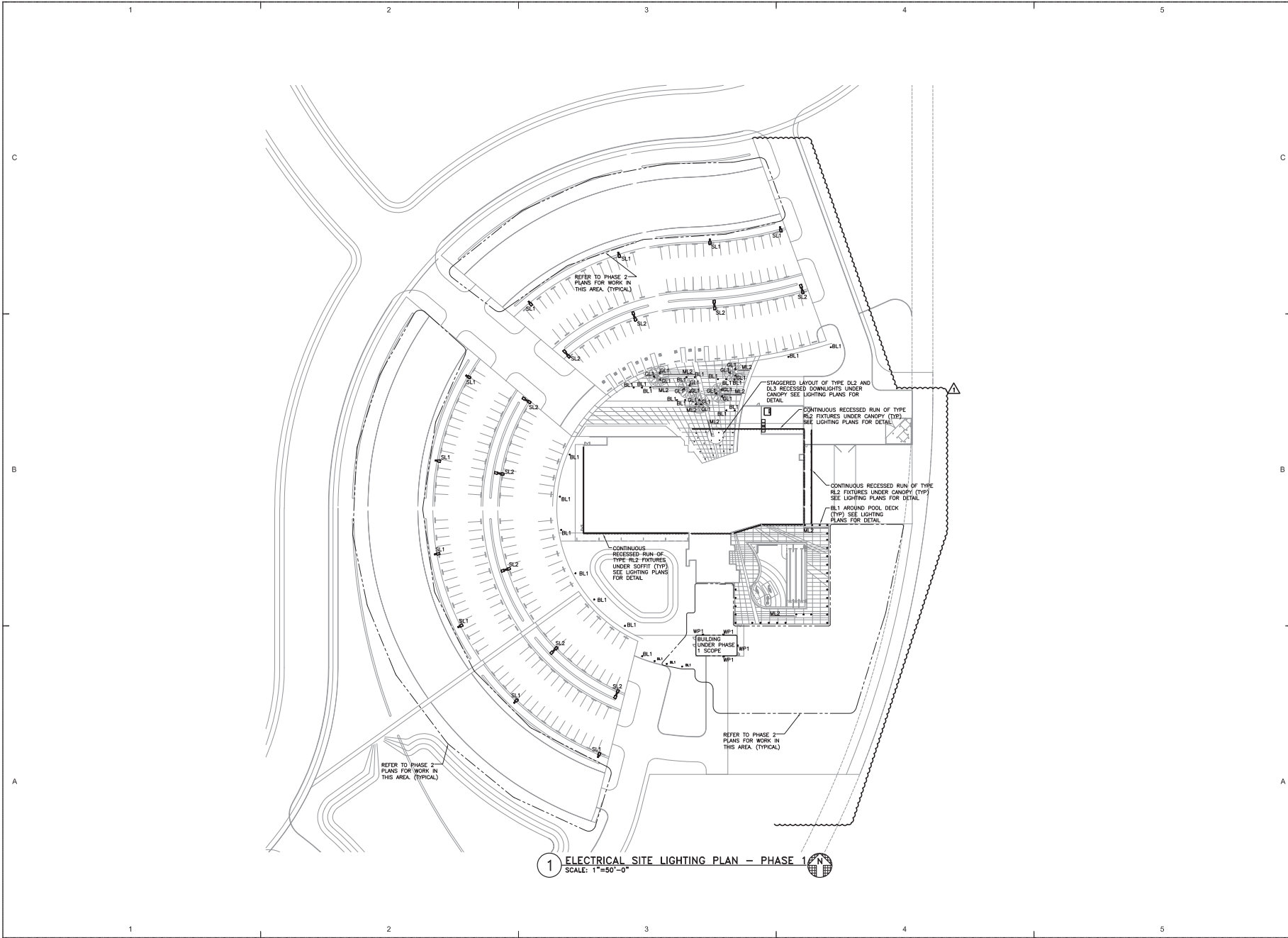
ELECTRICAL NOTES & SYMBOLS  
**ES-001**

No	Description	Date
1	COMMENTS	08/01/12

PERMIT SET  
07/27/2012

ELECTRICAL SITE  
LIGHTING PLAN  
PHASE 1

ES-051A



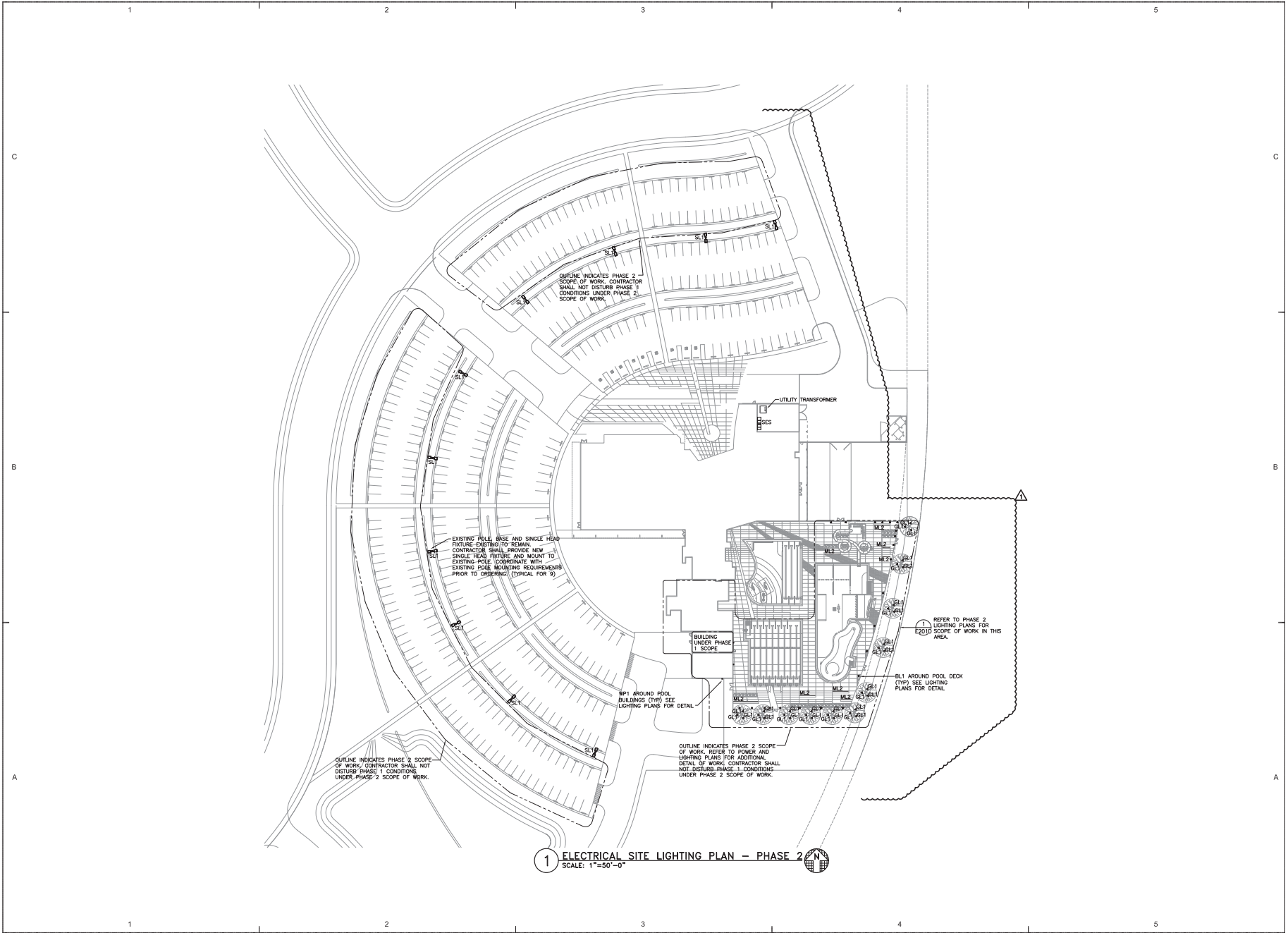
1 ELECTRICAL SITE LIGHTING PLAN - PHASE 1  
SCALE: 1"=50'-0"

No.	Description	Date
1	DRB COMMENTS	08/01/12

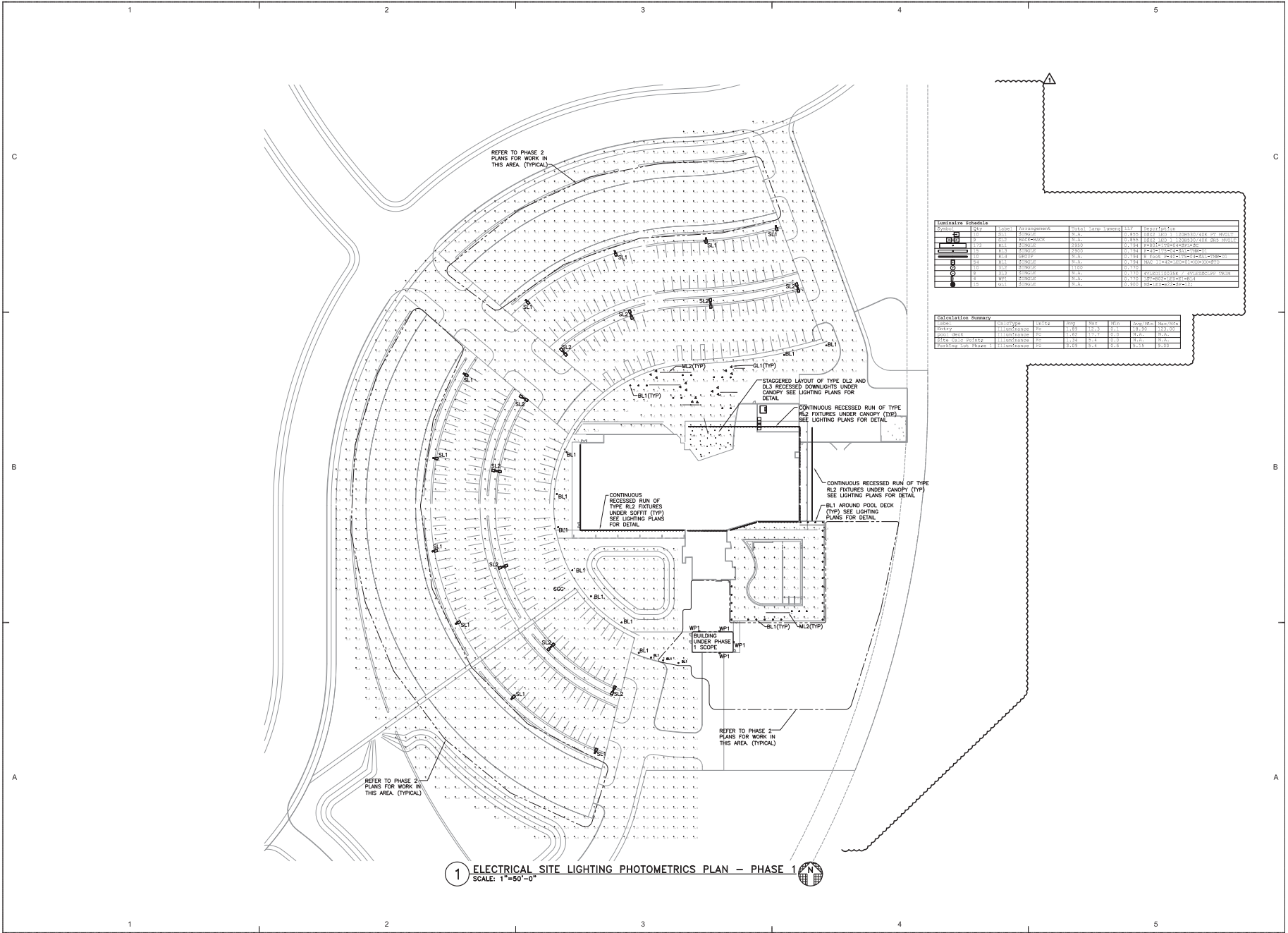
PERMIT SET  
07/27/2012

ELECTRICAL SITE  
LIGHTING PLAN  
PHASE 2

ES-051B



No.	Description	Date
1	DRB COMMENTS	08/01/12

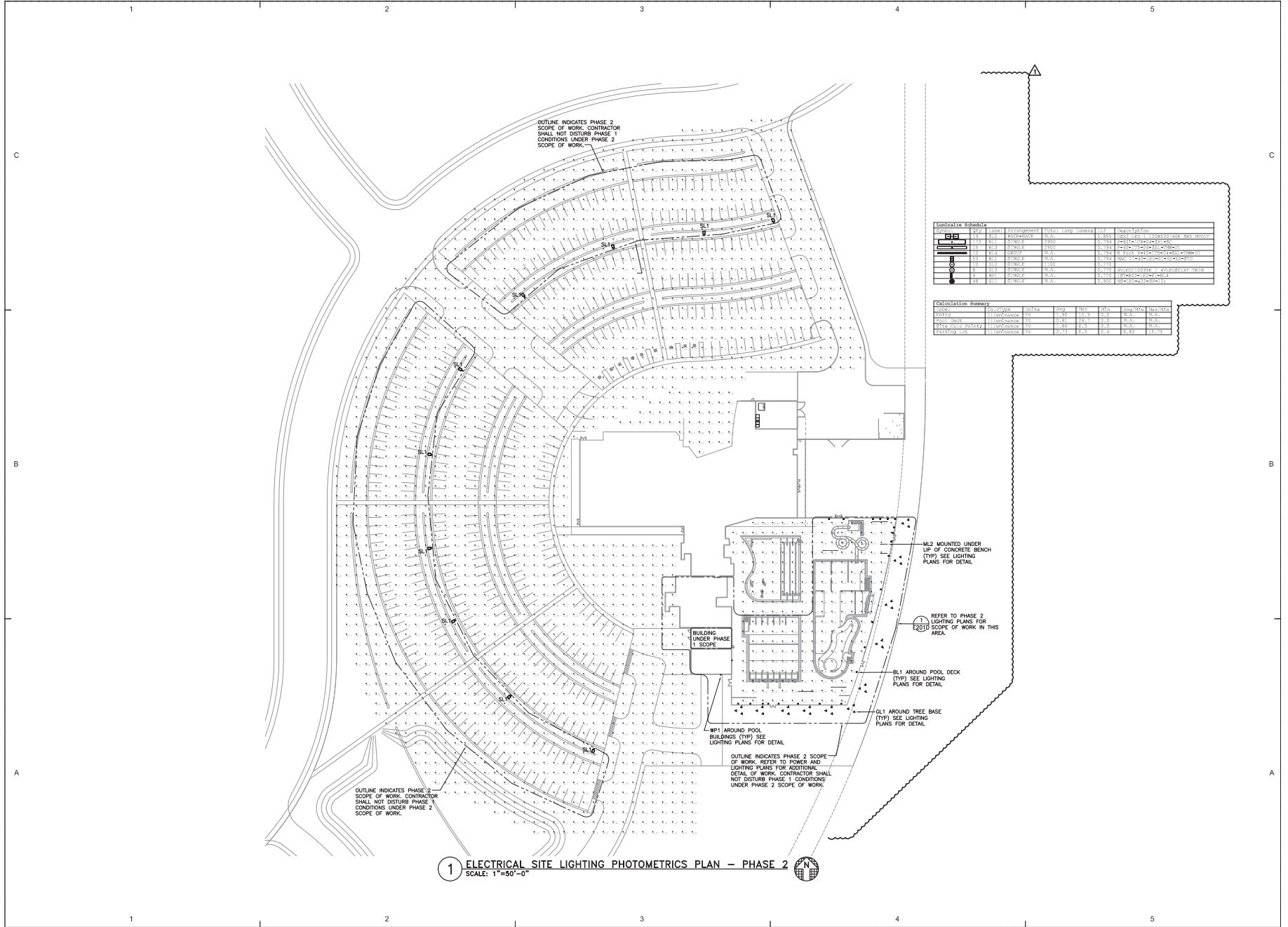


Fixture #	Qty	Model	Wattage	Total Lamp Wattage	WSP	Height	Notes
DL1	200	DL2	30.0	6000	0.75	10.0	1200x1000-IP-WH
DL2	200	DL3	30.0	6000	0.75	10.0	1200x1000-IP-WH
SL1	100	SL2	20.0	2000	0.75	10.0	1200x1000-IP-WH
SL2	100	SL3	20.0	2000	0.75	10.0	1200x1000-IP-WH
BL1	100	BL2	10.0	1000	0.75	10.0	1200x1000-IP-WH
BL2	100	BL3	10.0	1000	0.75	10.0	1200x1000-IP-WH
WP1	100	WP2	10.0	1000	0.75	10.0	1200x1000-IP-WH
WP2	100	WP3	10.0	1000	0.75	10.0	1200x1000-IP-WH

Fixture	Category	Units	Watt	WSP	Height	Notes
DL1	DL	200	30.0	0.75	10.0	1200x1000-IP-WH
DL2	DL	200	30.0	0.75	10.0	1200x1000-IP-WH
SL1	SL	100	20.0	0.75	10.0	1200x1000-IP-WH
SL2	SL	100	20.0	0.75	10.0	1200x1000-IP-WH
BL1	BL	100	10.0	0.75	10.0	1200x1000-IP-WH
BL2	BL	100	10.0	0.75	10.0	1200x1000-IP-WH
WP1	WP	100	10.0	0.75	10.0	1200x1000-IP-WH
WP2	WP	100	10.0	0.75	10.0	1200x1000-IP-WH

1 ELECTRICAL SITE LIGHTING PHOTOMETRICS PLAN - PHASE 1  
SCALE: 1"=50'-0"

No.	Description	Date
1	DRB COMMENTS	08/01/12



**SSS**  
Square Slough Shed

**Specifications**  
Length: 48"  
Width: 18"  
Height: 12"  
Weight: 27 lbs

Model	Part No.	Part No.	Part No.	Part No.	Part No.	Part No.	Part No.	Part No.	Part No.	Part No.	Part No.	Part No.	Part No.	Part No.	Part No.	Part No.	Part No.	Part No.	Part No.
100W	100W	100W	100W	100W	100W	100W	100W	100W	100W	100W	100W	100W	100W	100W	100W	100W	100W	100W	100W

**Ordering Information**  
EXAMPLE: DSX2 LED L1 120R70A0C S33 M0VUL SPA D0X00

Order	Part No.	Description	Part No.	Description	Part No.	Description	Part No.	Description	Part No.	Description	Part No.	Description
100W	100W	100W	100W	100W	100W	100W	100W	100W	100W	100W	100W	100W

**Shipping**  
Weight: 27 lbs  
Dimensions: 48" x 18" x 12"

**D-Series Size 2**  
LED Area Luminaire

**Specifications**  
Length: 48"  
Width: 18"  
Height: 12"  
Weight: 27 lbs

**Ordering Information**  
EXAMPLE: DSX2 LED L1 120R70A0C S33 M0VUL SPA D0X00

Order	Part No.	Description	Part No.	Description	Part No.	Description	Part No.	Description	Part No.	Description	Part No.	Description
100W	100W	100W	100W	100W	100W	100W	100W	100W	100W	100W	100W	100W

**Shipping**  
Weight: 27 lbs  
Dimensions: 48" x 18" x 12"

**D-Series Size 2**  
LED Area Luminaire

**Specifications**  
Length: 48"  
Width: 18"  
Height: 12"  
Weight: 27 lbs

**Ordering Information**  
EXAMPLE: DSX2 LED L1 120R70A0C S33 M0VUL SPA D0X00

Order	Part No.	Description	Part No.	Description	Part No.	Description	Part No.	Description	Part No.	Description	Part No.	Description
100W	100W	100W	100W	100W	100W	100W	100W	100W	100W	100W	100W	100W

**Shipping**  
Weight: 27 lbs  
Dimensions: 48" x 18" x 12"

**SKYGUARD**

**Ordering Information**  
EXAMPLE: DSX2 LED L1 120R70A0C S33 M0VUL SPA D0X00

Order	Part No.	Description	Part No.	Description	Part No.	Description	Part No.	Description	Part No.	Description	Part No.	Description
100W	100W	100W	100W	100W	100W	100W	100W	100W	100W	100W	100W	100W

**Shipping**  
Weight: 27 lbs  
Dimensions: 48" x 18" x 12"

**Linear P40**

**Ordering - Standard System\***

Order	Part No.	Description	Part No.	Description	Part No.	Description	Part No.	Description	Part No.	Description	Part No.	Description
100W	100W	100W	100W	100W	100W	100W	100W	100W	100W	100W	100W	100W

**Ordering - 1 Imp Staggered System\***

Order	Part No.	Description	Part No.	Description	Part No.	Description	Part No.	Description	Part No.	Description	Part No.	Description
100W	100W	100W	100W	100W	100W	100W	100W	100W	100W	100W	100W	100W

**Core & Reflector P80i**

**Ordering**

Order	Part No.	Description	Part No.	Description	Part No.	Description	Part No.	Description	Part No.	Description	Part No.	Description
100W	100W	100W	100W	100W	100W	100W	100W	100W	100W	100W	100W	100W

**Corentory**  
Series iVLED

**Ordering**

Order	Part No.	Description	Part No.	Description	Part No.	Description	Part No.	Description	Part No.	Description	Part No.	Description
100W	100W	100W	100W	100W	100W	100W	100W	100W	100W	100W	100W	100W

**Corentory**  
Series oVLED

**Ordering**

Order	Part No.	Description	Part No.	Description	Part No.	Description	Part No.	Description	Part No.	Description	Part No.	Description
100W	100W	100W	100W	100W	100W	100W	100W	100W	100W	100W	100W	100W

**TYPES RL3 & RL4**

**Ordering**

Order	Part No.	Description	Part No.	Description	Part No.	Description	Part No.	Description	Part No.	Description	Part No.	Description
100W	100W	100W	100W	100W	100W	100W	100W	100W	100W	100W	100W	100W

**TYPE RL1 & RL2**

**Ordering**

Order	Part No.	Description	Part No.	Description	Part No.	Description	Part No.	Description	Part No.	Description	Part No.	Description
100W	100W	100W	100W	100W	100W	100W	100W	100W	100W	100W	100W	100W

**TYPE DL3**

**Ordering**

Order	Part No.	Description	Part No.	Description	Part No.	Description	Part No.	Description	Part No.	Description	Part No.	Description
100W	100W	100W	100W	100W	100W	100W	100W	100W	100W	100W	100W	100W

**TYPE DL2**

**Ordering**

Order	Part No.	Description	Part No.	Description	Part No.	Description	Part No.	Description	Part No.	Description	Part No.	Description
100W	100W	100W	100W	100W	100W	100W	100W	100W	100W	100W	100W	100W

**ARCHITEKTON**

464 S Farmer Ave., Suite 101  
Tempe, AZ 85281  
T 480.884.4837  
F 480.884.4038  
www.architekton.com

**HENDERSON**  
**ENGINEERS**  
7330 NORTH MILITARY STREET, SUITE 4110  
PHOENIX, AZ 85021  
TEL 480.354.5200 FAX 480.354.5201  
www.henderson.com

**MULTI-GENERATIONAL CENTER AND**  
**AQUATICS FACILITY**

No Description Date  
OR COMMENTS 8/8/12

PERMIT SET  
07/27/2012  
ELECTRICAL SITE  
LIGHTING  
OUTSHEETS  
ES-151