

Anderson Farms - Phase 2

Maricopa, Arizona



Preliminary Landscape Design Package

Submitted: February 09, 2024

Resubmitted: May 31, 2024

Resubmitted: July 18, 2024

DEVELOPER:
LENNAR

1665 W. Alameda Drive #130
Tempe, AZ 85282
(480) 702-8766
Contact: Vickey Morris
vickey.morris@lennar.com

LANDSCAPE ARCHITECT:
EPS GROUP, INC.

1130 N. Alma School Rd, Suite 120
Mesa, AZ 85201
(480) 503-2250
Contact: Aliza Sabin, RLA, LEED AP
aliza.sabin@epsgroupinc.com

PLANNER:
EPS GROUP, INC.

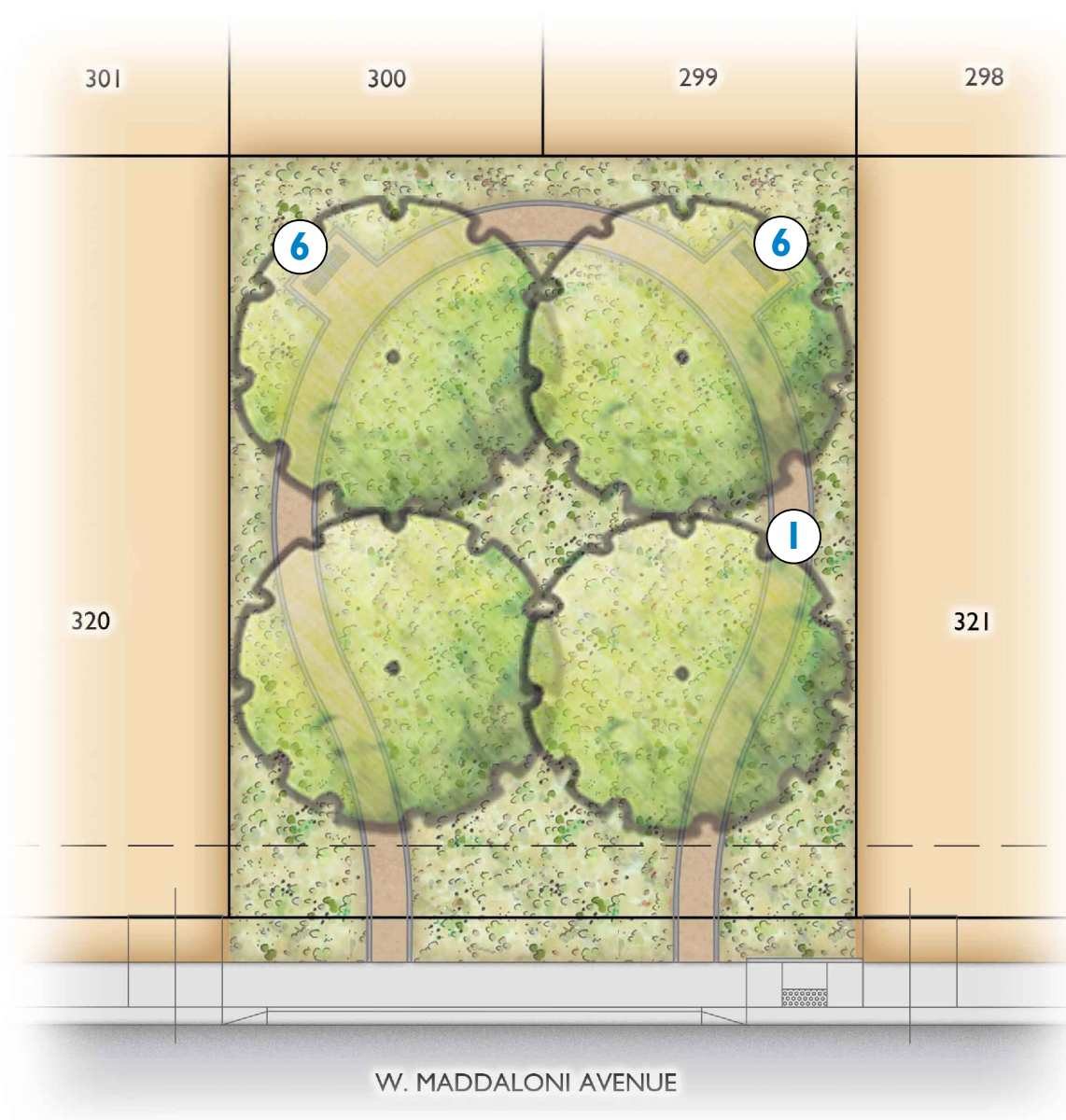
1130 N. Alma School Rd, Suite 120
Mesa, AZ 85201
(480) 503-2250
Contact: Josh Hannon
josh.hannon@epsgroupinc.com

CIVIL ENGINEER:
EPS GROUP, INC.

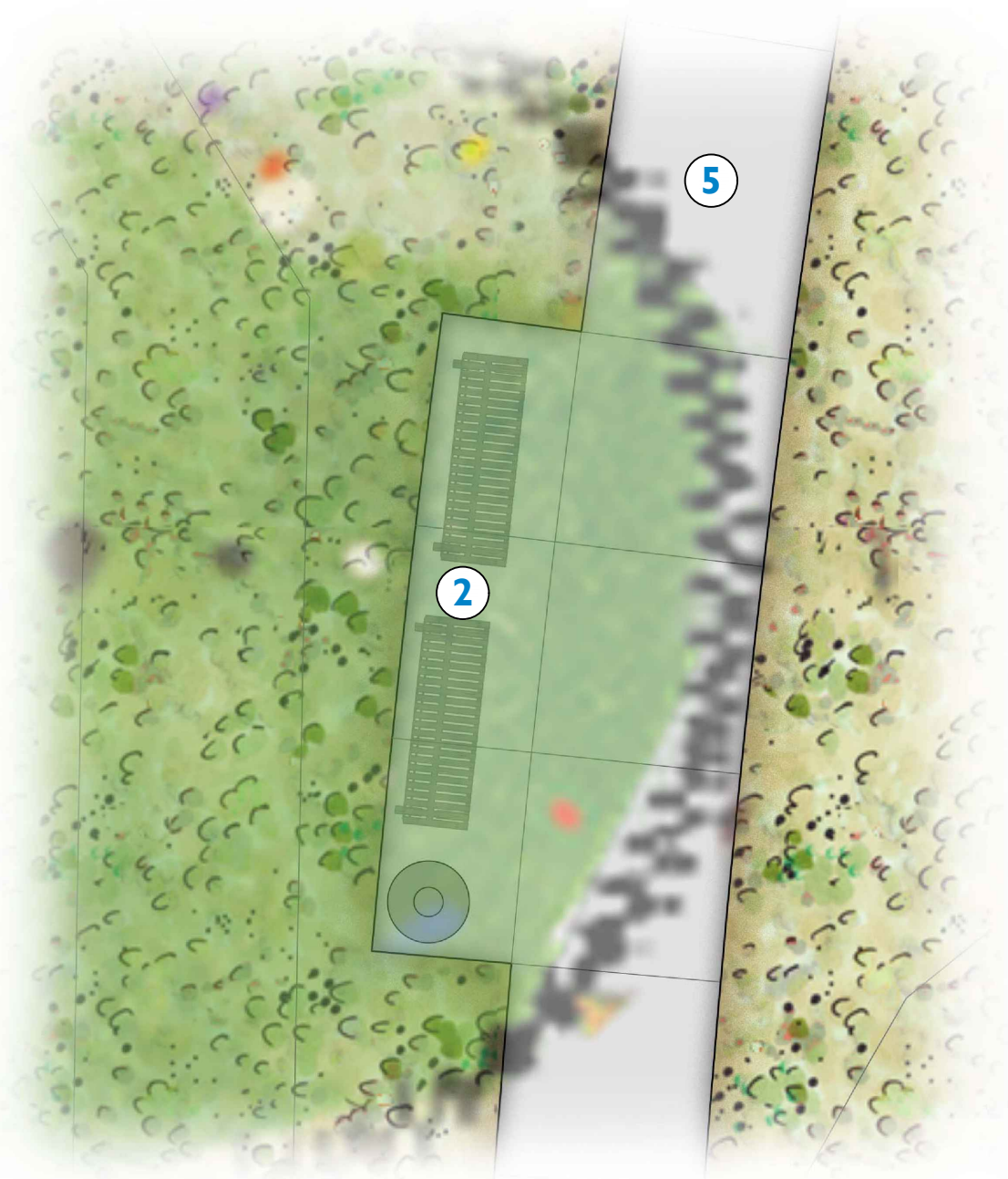
1130 N. Alma School Rd, Suite 120
Mesa, AZ 85201
(480) 503-2250
Contact: Eric Winters, P.E.
eric.winters@epsgroupinc.com

LENNAR



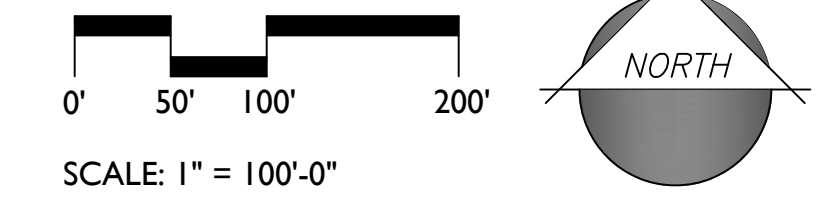
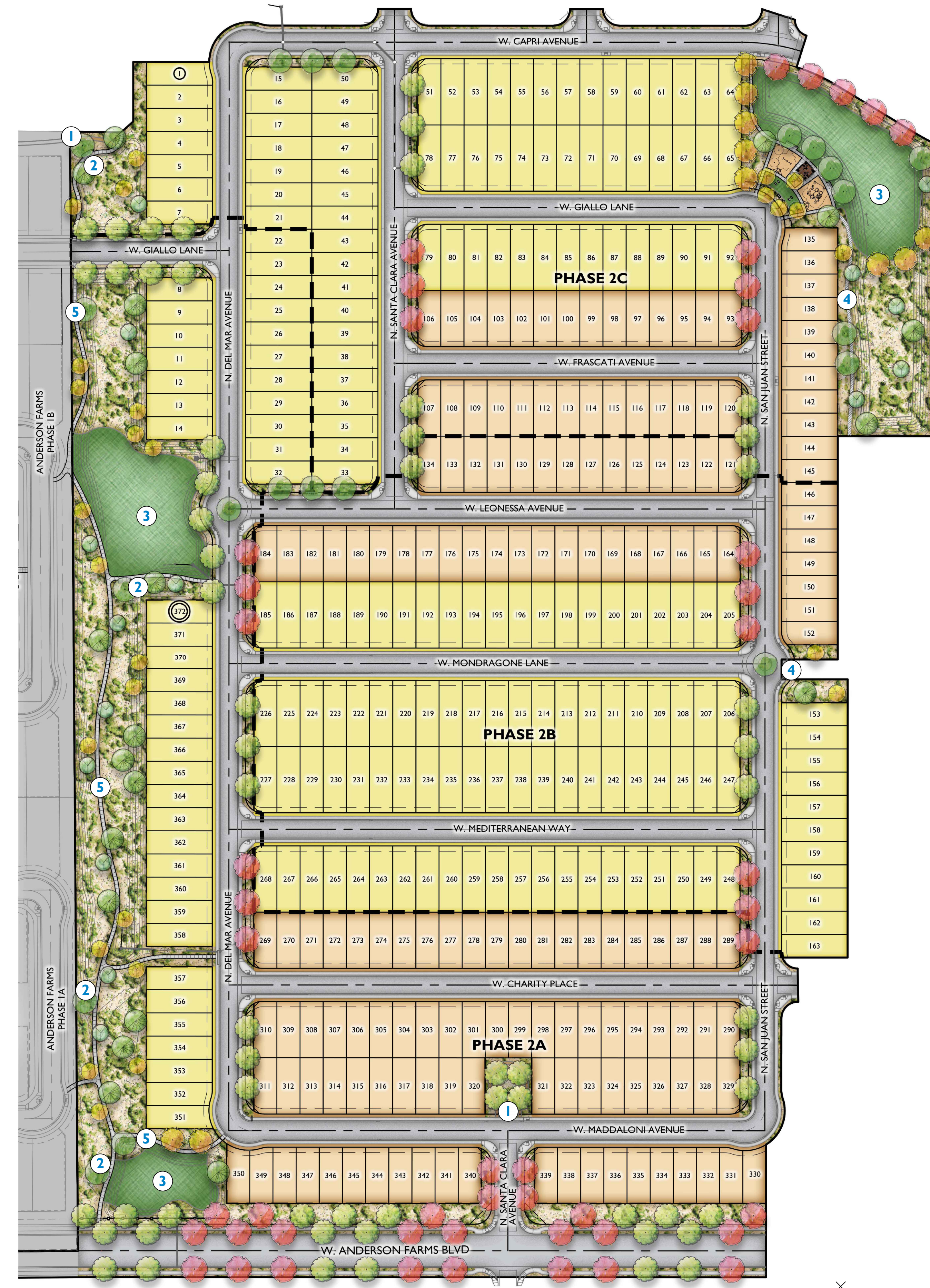
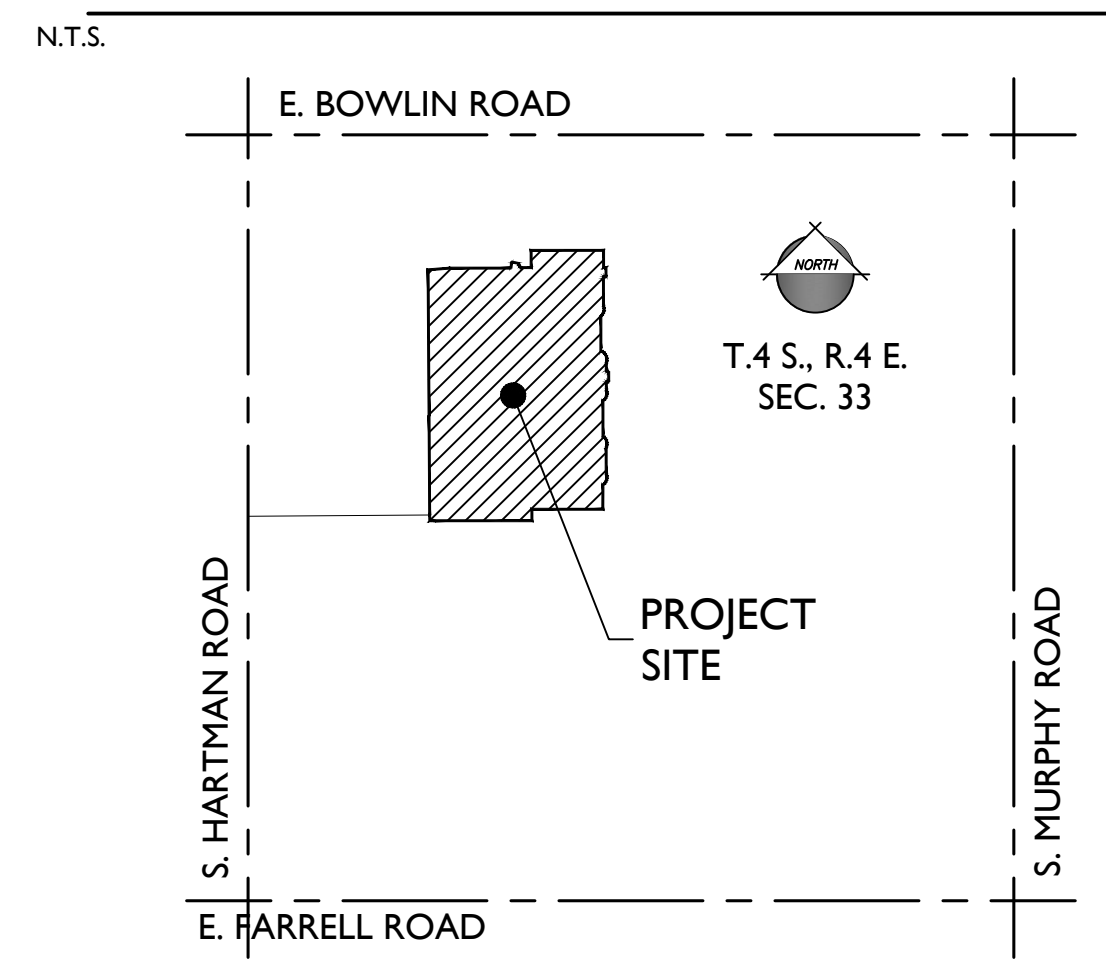


1 POCKET PARK
Scale: 1" = 20'-0"



2 SEATING NODE ENLARGEMENT
Scale: 1" = 5'-0"

VICINITY MAP



PLANT LEGEND

SYMBOL	SCIENTIFIC NAME	COMMON NAME	SIZE
TREES			
	Acacia aneura	Mulga Acacia	24" Box
	Caesalpinia mexicana	Mexican Bird of Paradise	24" Box
	Eucalyptus papuana	Ghost Gum	24" Box
	Fraxinus velutina 'Fan Tex'	Fan Tex Ash	24" Box
	Pistacia X 'Red Push'	Red Push Pistacia	24" Box
	Quercus virginiana 'Heritage'	'Heritage' Live Oak	24" Box
	Ulmus parvifolia	Chinese Evergreen Elm	24" Box

SHRUBS/ACCENTS

SYMBOL	COMMON NAME	SIZE
	Bougainvillea 'La Jolla'	'La Jolla' Bougainvillea 5 Gal
	Calliandra californica	Baja Fairy Duster 5 Gal
	Caesalpinia pulcherrima	Red Bird of Paradise 5 Gal
	Callistemon viminalis 'Little John'	Little John 5 Gal
	Encelia farinosa	Brittlebush 5 Gal
	Eremophila hygrophana 'Blue Bells'	Blue Bells 5 Gal
	Glandularia rigida	Sandpaper Verbena 5 Gal
	Gossypium harknessii	San Marcos Hibiscus 5 Gal
	Hesperaloe funifera	Giant Hesperaloe 1 Gal
	Justicia californica	Chuparosa 1 Gal
	Lantana x 'Dallas Red'	Dallas Red Lantana 5 Gal
	Leucophyllum langmaniae 'Rio Bravo'	Rio Bravo Sage 5 Gal
	Muhlenbergia capillaris 'Regal Mist'	'Regal Mist' Muhly 5 Gal
	Muhlenbergia lindheimeri 'Autumn Glow'	'Autumn Glow' Muhly 5 Gal
	Myrtus communis 'Compacta'	Dwarf Myrtle 5 Gal
	Nerium oleander 'Petite Pink'	Dwarf Pink Oleander 5 Gal
	Ruella brittoniana	Purple Ruella 5 Gal
	Russelia equisetiformis	Coral Fountain 5 Gal
	Salvia greggii	Autumn sage 5 Gal
	Senna nemophila	Desert Cassia 5 Gal
	Simmondsia chinensis	Joboba 5 Gal
	Simmondsia chinensis 'Vista'	Compact Joboba 5 Gal
	Tecoma x 'Sunrise'	Sunrise Esperanza 5 Gal

GROUNDCOVERS

SYMBOL	COMMON NAME	SIZE
	Acacia redolens Desert Carpet	Prostrate Acacia 1 Gal
	Dalea greggii	Trailing Indigo Bush 1 Gal
	Convolvulus cneorum	Bush Morning Glory 1 Gal
	Lantana montevidensis	Trailing Purple Lantana 1 Gal
	Lantana x 'New Gold'	New Gold Lantana 1 Gal
	Rosmarinus officinalis 'Huntington Carpet'	Trailing Rosemary 1 Gal
	Sphagneticola trilobata	Yellow Dot 1 Gal

TURF & INERT MATERIALS

	Cynodon dactylon 'Midiron'	'Midiron' Hybrid Bermuda Sod
	3/4\"/>	Apache Brown or Equal, 2\"/>

NOTE: BOLLARD LIGHTING ALONG PASEO PATH WILL BE PROVIDED FOR WAYFINDING

LOT SIZES

	DREAM SERIES - 35'x85'
	COTTAGE SERIES - 35'x100'

PROJECT DATA

A.P.N.	A PORTION OF 502-03-015H
CURRENT USE:	AGRICULTURAL
GENERAL PLAN LAND USE:	MASTER PLANNED COMMUNITY
EXISTING ZONING:	RS-5 PAD (PAD21-09)
GROSS AREA:	± 50.79 ACRES
NET AREA:	± 48.36 ACRES (EXCLUDES COLLECTOR R/W)
NO. OF LOTS:	163
35' x 85'	209
35' x 100'	372
TOTAL	
GROSS DENSITY:	7.32 DU/AC
OPEN SPACE TRACT AREA:	8.96 ACRES (18.5% OF NET AREA)
USEABLE OPEN SPACE AREA:	5.40 ACRES (60% OF TOTAL OPEN SPACE AREA)

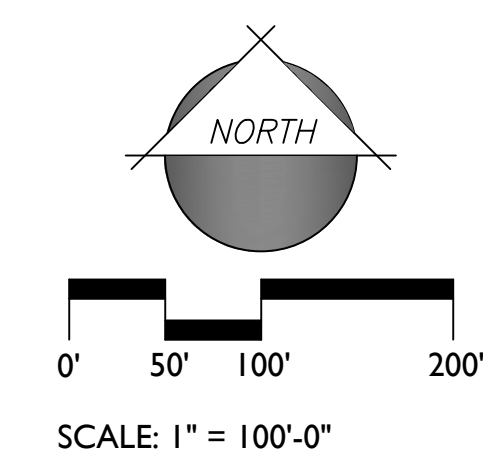
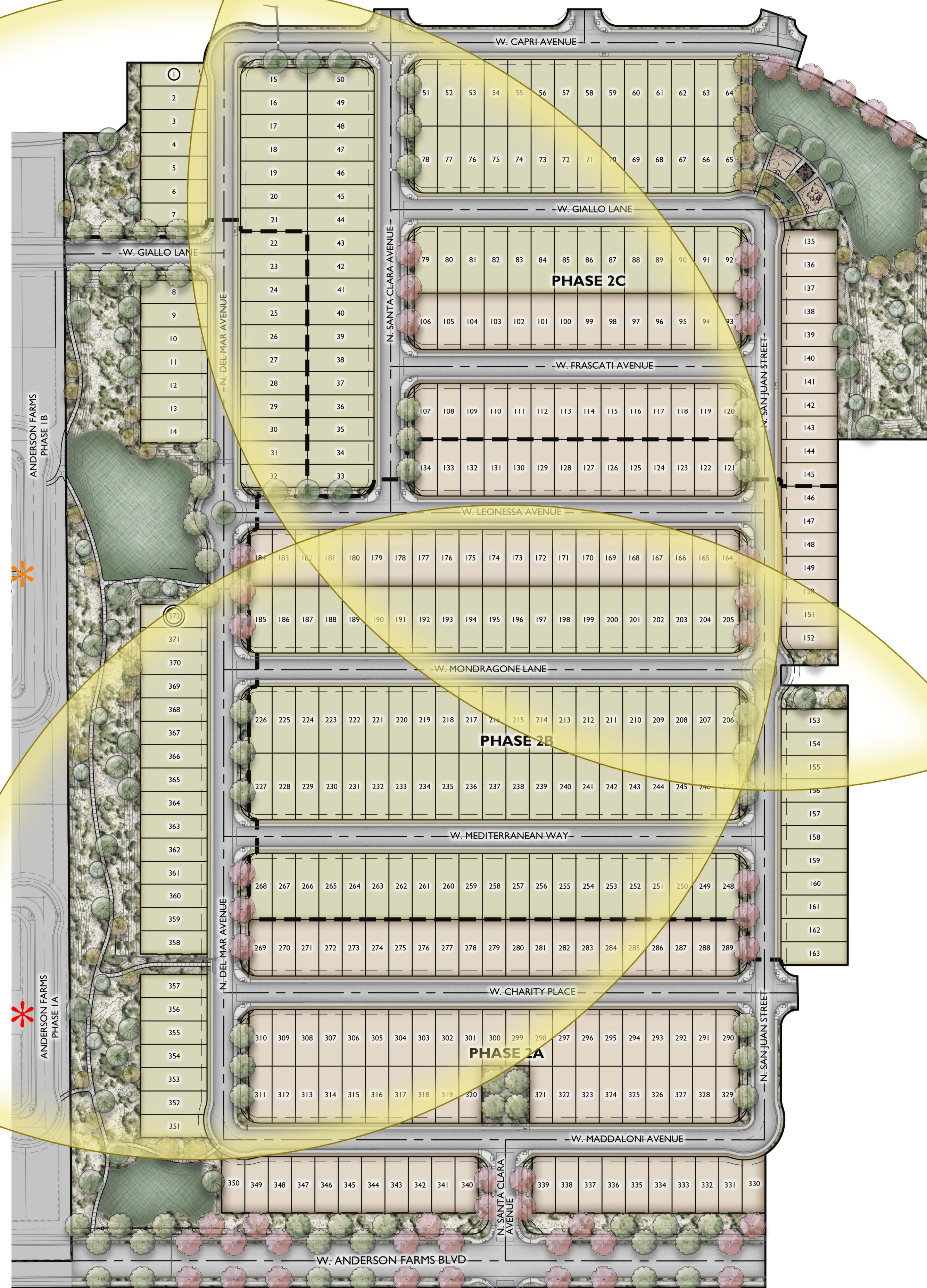
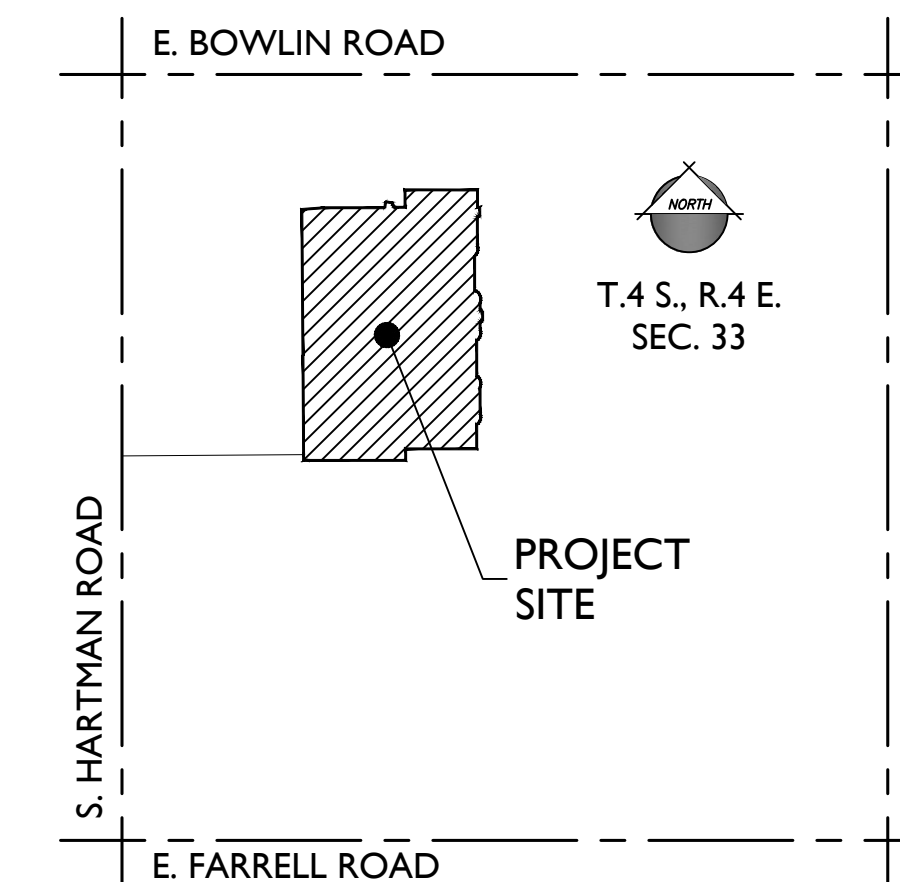
KEYNOTES

- 1 DECOMPOSED GRANITE TRAIL
- 2 SEATING NODE
- 3 TURF
- 4 FUTURE CONCRETE SIDEWALK
- 5 CONCRETE SIDEWALK / TRAIL (LIGHTED)
- 6 BENCH






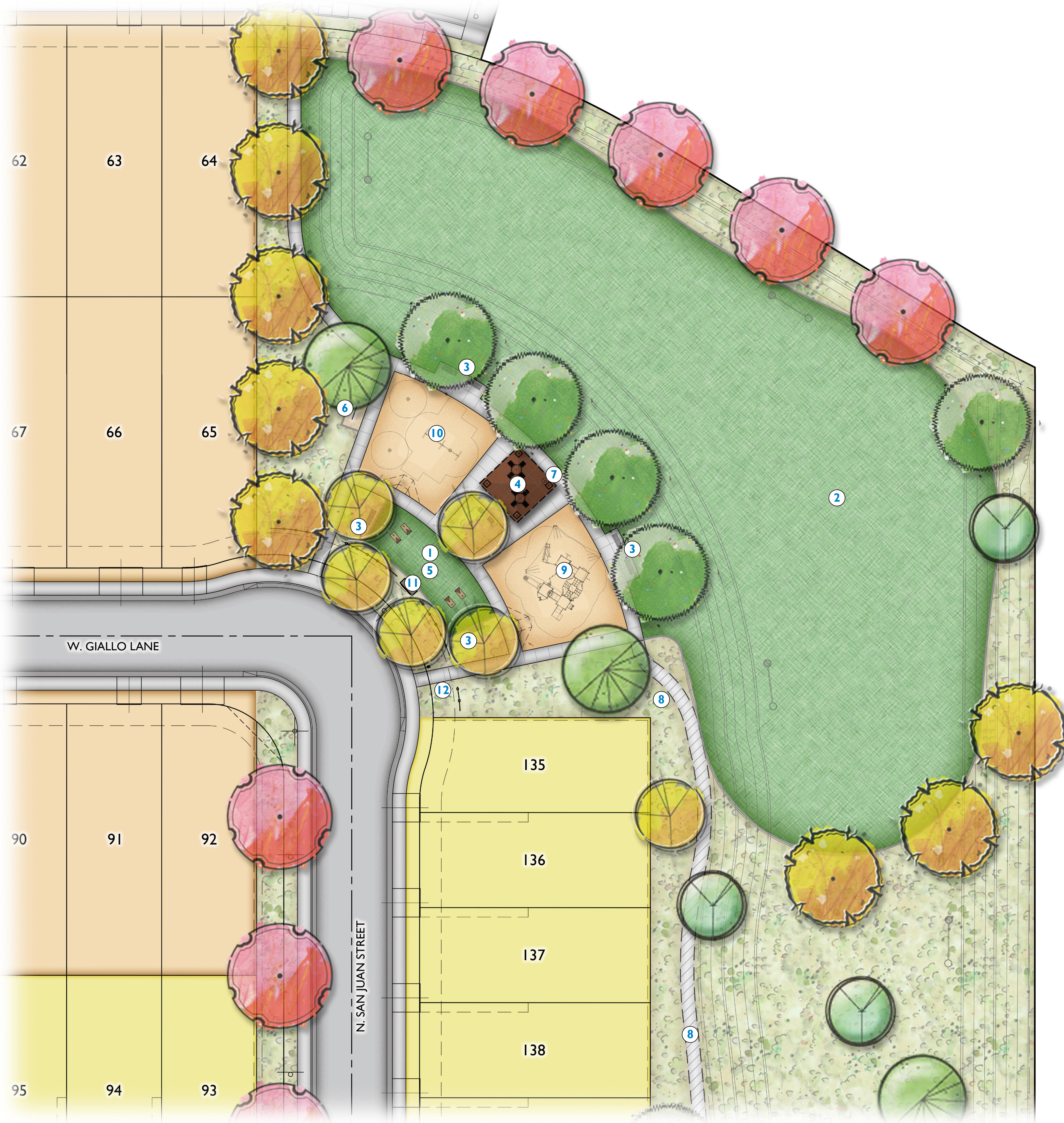
VICINITY MAP

N.T.S.



KEYNOTES

-  PH1B EXISTING PARK (BOCCE / PICKLEBALL / RAMADA)
-  PH1A EXISTING PARK (TOT LOT / RAMADA)
-  880' PARK RADIUS



CORNHOLE



TURF PLAY



RAMADA



PLAY STRUCTURE AND SWINGS
NOTE: PLAY STRUCTURE TO BE DETERMINED AT CONSTRUCTION DOCUMENTS LEVEL

PLANT LEGEND

SYMBOL	SCIENTIFIC NAME	COMMON NAME	SIZE
TREES			
	<i>Acacia aneura</i>	Mulga Acacia	24" Box
	<i>Caesalpinia mexicana</i>	Mexican Bird of Paradise	24" Box
	<i>Eucalyptus papuana</i>	Ghost Gum	24" Box
	<i>Fraxinus velutina 'Fan Tex'</i>	Fan Tex Ash	24" Box
	<i>Pistacia X 'Red Push'</i>	Red Push Pistacia	24" Box
	<i>Quercus virginiana 'Heritage'</i>	'Heritage' Live Oak	24" Box
	<i>Ulmus parvifolia</i>	Chinese Evergreen Elm	24" Box

SYMBOL	COMMON NAME	SIZE
SHRUBS/ACCENTS		
	<i>Bougainvillea 'La Jolla'</i>	'La Jolla' Bougainvillea 5 Gal
	<i>Calliandra californica</i>	Baja Fairy Duster 5 Gal
	<i>Caesalpinia pulcherrima</i>	Red Bird of Paradise 5 Gal
	<i>Callistemon viminalis 'Little John'</i>	Little John 5 Gal
	<i>Encelia farinosa</i>	Brittlebush 5 Gal
	<i>Eremophila hygrophana 'Blue Bells'</i>	Blue Bells 5 Gal
	<i>Glandularia rigida</i>	Sandpaper Verbena 5 Gal
	<i>Gossypium harknessii</i>	San Marcos Hibiscus 5 Gal
	<i>Hesperaloe funifera</i>	Giant Hesperaloe 1 Gal
	<i>Justicia californica</i>	Chuparosa 1 Gal
	<i>Lantana x 'Dallas Red'</i>	Dallas Red Lantana 5 Gal
	<i>Leucophyllum langmaniae 'Rio Bravo'</i>	Rio Bravo Sage 5 Gal
	<i>Muhlenbergia capillaris 'Regal Mist'</i>	'Regal Mist' Muhly 5 Gal
	<i>Muhlenbergia lindheimeri 'Autumn Glow'</i>	'Autumn Glow' Muhly 5 Gal
	<i>Myrtus communis 'Compacta'</i>	Dwarf Myrtle 5 Gal
	<i>Nerium oleander 'Petite Pink'</i>	Dwarf Pink Oleander 5 Gal
	<i>Ruellia brittoniana</i>	Purple Ruellia 5 Gal
	<i>Russelia equisetiformis</i>	Coral Fountain 5 Gal
	<i>Salvia greggii</i>	Autumn sage 5 Gal
	<i>Senna nemophila</i>	Desert Cassia 5 Gal
	<i>Simmondsia chinensis</i>	Jojoba 5 Gal
	<i>Simmondsia chinensis 'Vista'</i>	Compact Jojoba 5 Gal
	<i>Tecoma x 'Sunrise'</i>	Sunrise Esperanza 5 Gal

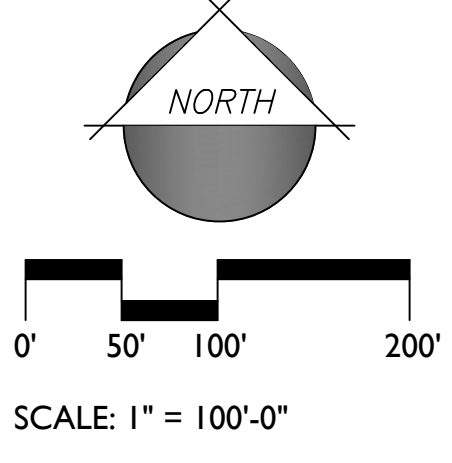
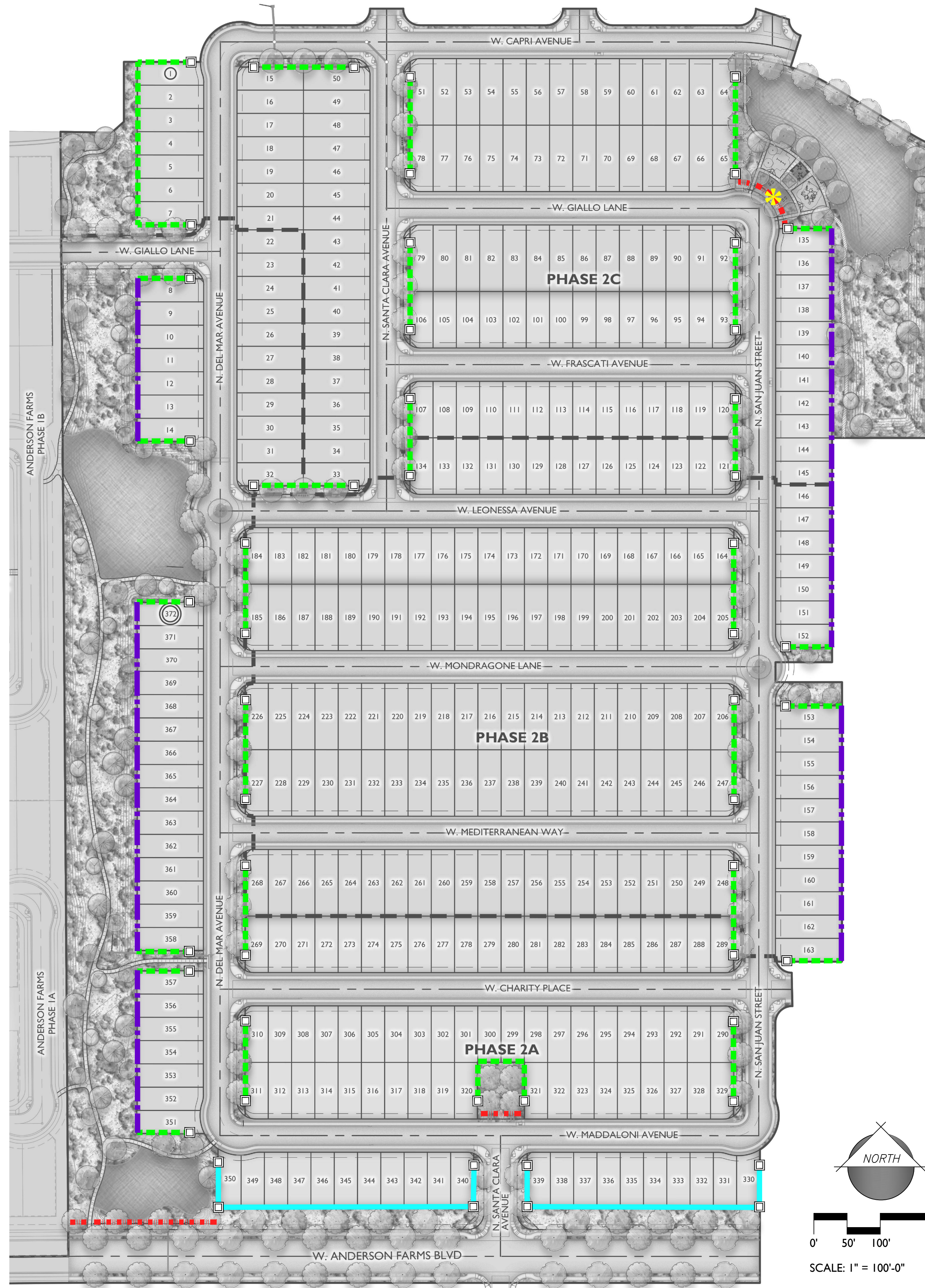
SYMBOL	COMMON NAME	SIZE
GROUNDCOVERS		
	<i>Acacia redolens Desert Carpet</i>	Prostrate Acacia 1 Gal
	<i>Dalea greggii</i>	Trailing Indigo Bush 1 Gal
	<i>Convolvulus cneorum</i>	Bush Morning Glory 1 Gal
	<i>Lantana montevidensis</i>	Trailing Purple Lantana 1 Gal
	<i>Lantana x 'New Gold'</i>	New Gold Lantana 1 Gal
	<i>Rosmarinus officianlis 'Huntington Carpet'</i>	Trailing Rosemary 1 Gal
	<i>Sphagnetocola trilobata</i>	Yellow Dot 1 Gal

TURF & INERT MATERIALS		
	Cynodon dactylon 'Midiron'	'Midiron' Hybrid Bermuda Sod
	3/4" Screened Decomposed Granite Apache Brown or Equal, 2" Depth Min.	
	Engineered Wood Fiber	

KEYNOTES

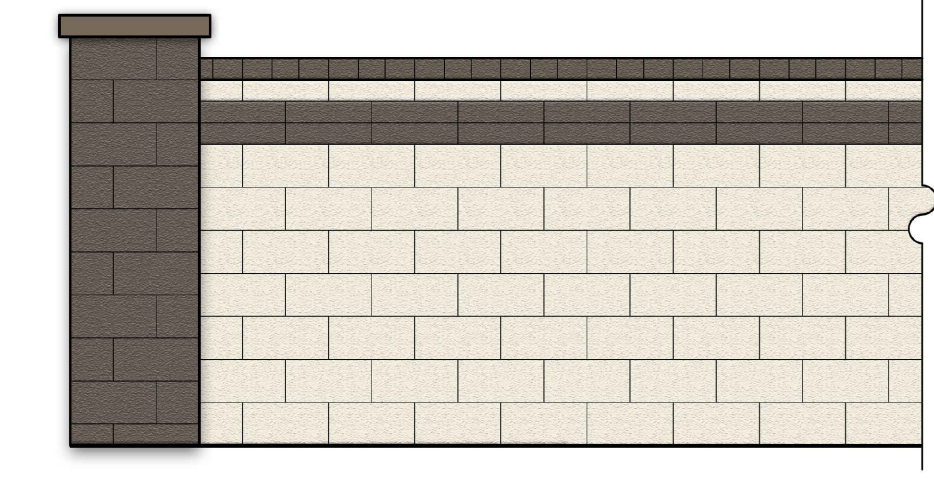
- 1 CORNHOLE
- 2 ACTIVE TURF
- 3 LANDSCAPE BENCH
- 4 RAMADA WITH TABLES
- 5 ARTIFICIAL TURF
- 6 BIKE RACK
- 7 WASTE RECEPTACLE
- 8 FUTURE CONCRETE SIDEWALK
- 9 PLAY STRUCTURE
- 10 SWINGSET WITH TODDLER SEAT
- 11 PARK SIGN
- 12 PET WASTE RECEPTACLE



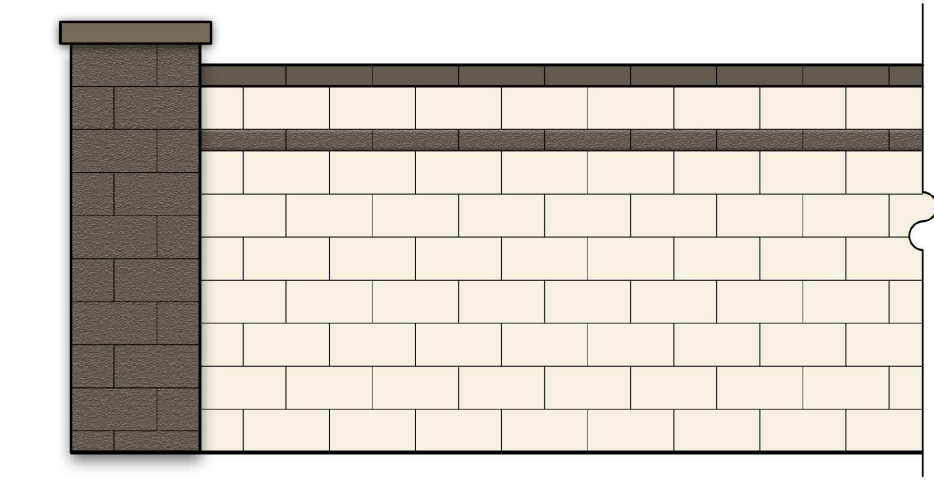


WALLS LEGEND

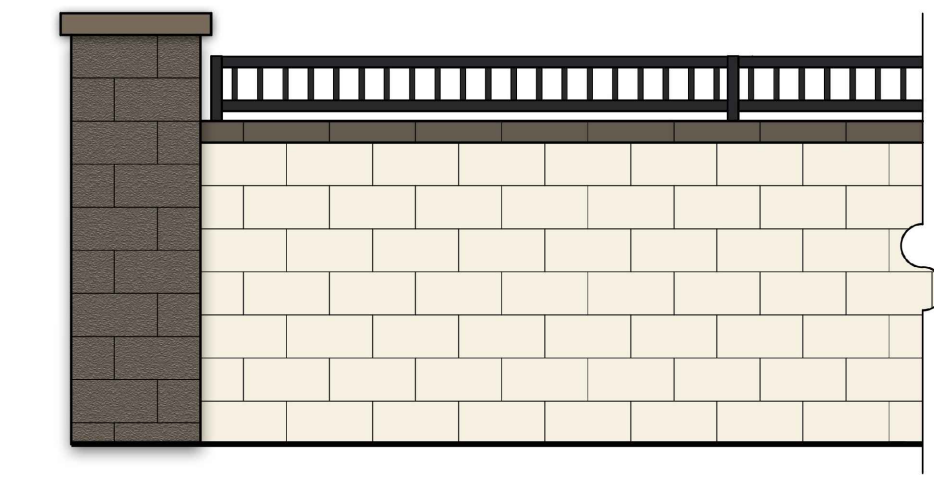
SYMBOL	ITEM
	DECORATIVE COLUMN
	PRIMARY THEME WALL
	SECONDARY THEME WALL
	PARTIAL VIEW WALL (1' ON 5')
	RAIL FENCE



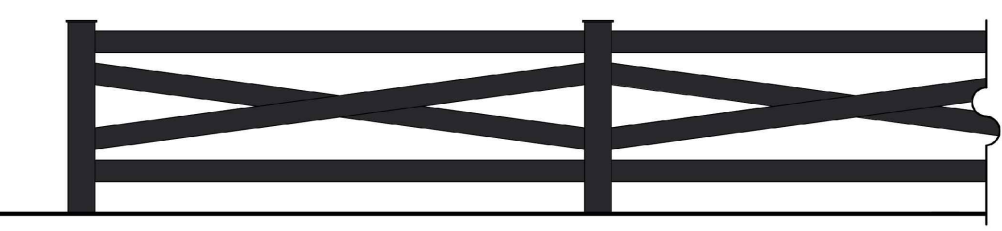
PRIMARY THEME WALL



SECONDARY THEME WALL



PARTIAL VIEW WALL



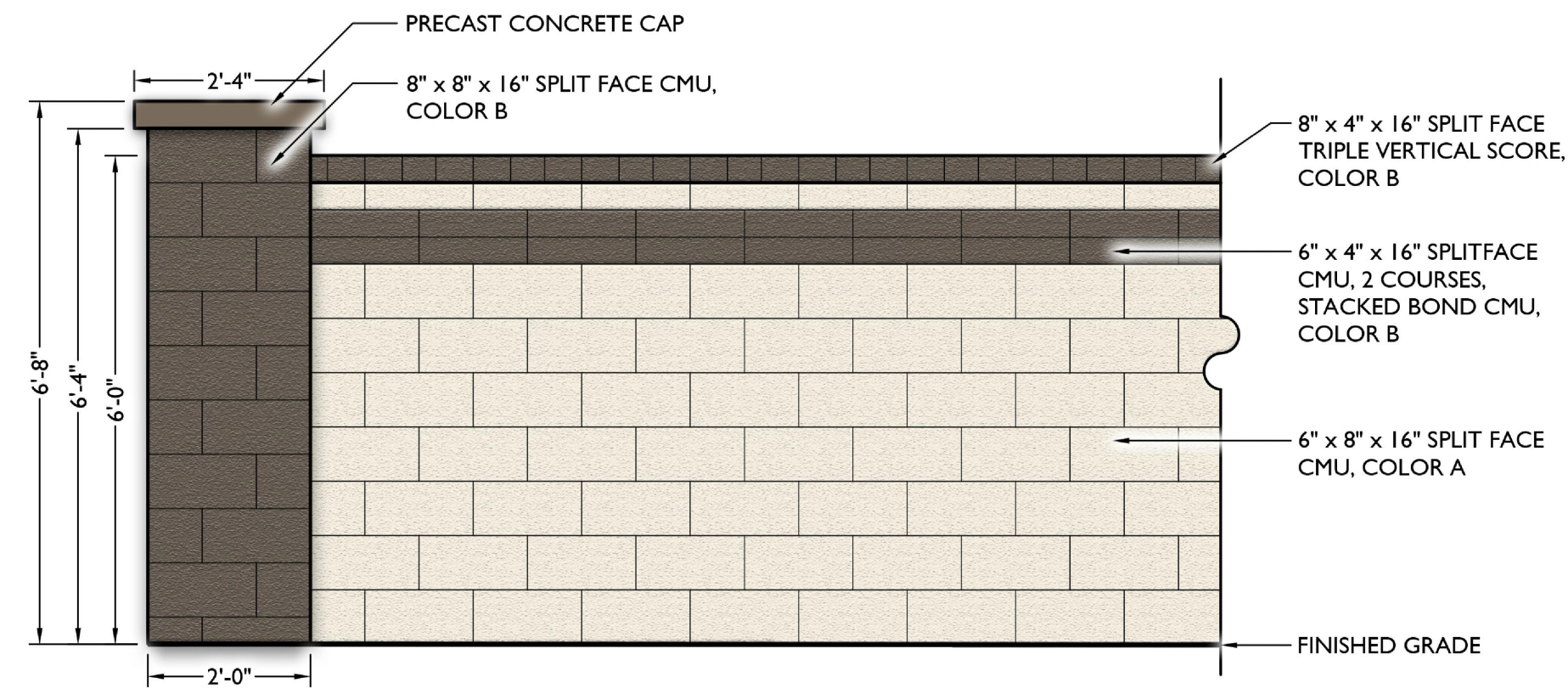
RAIL FENCE



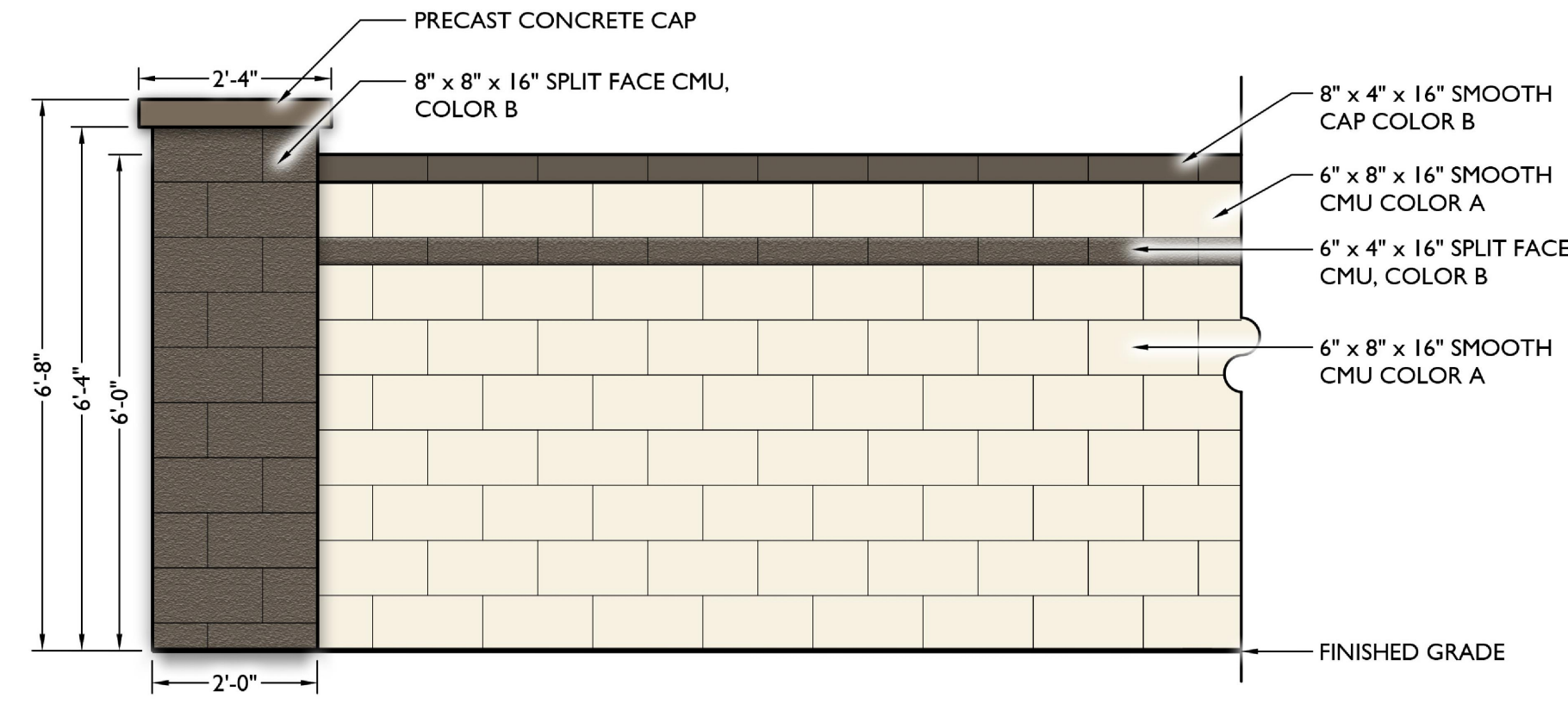
* PARK SIGNAGE - NTS

COLOR & MATERIALS SCHEDULE

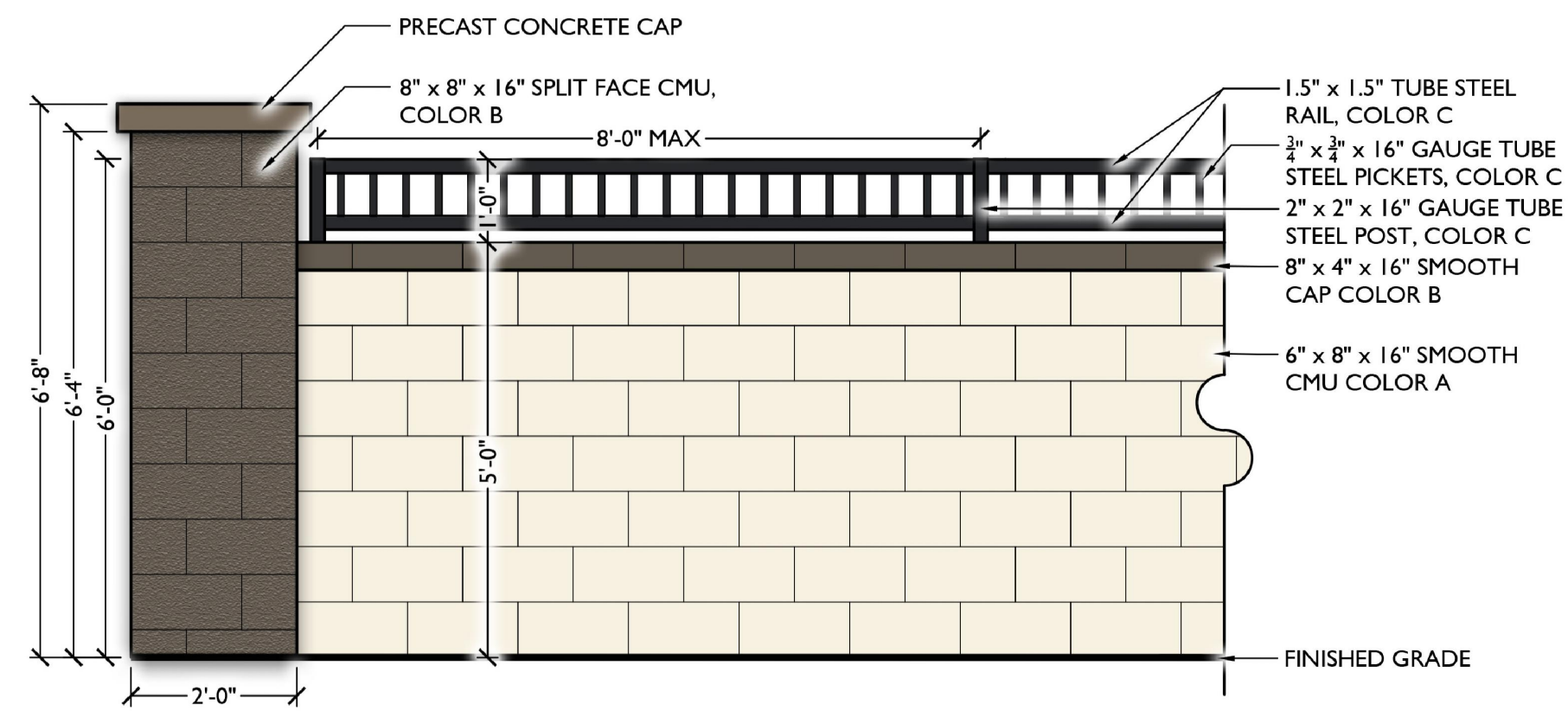
ITEM	COLOR & MANUFACTURER
COLOR A (CMU)	COLOR: SWAN WHITE (DEW346) BY DUNN EDWARDS, OAE.
COLOR B (CMU)	COLOR: DOWNING TO EARTH (DEW634) BY DUNN EDWARDS, OAE.
COLOR C (STEEL)	POWDER COATED TO MATCH RAL 9011 GRAPHITE BLACK
STONE VENEER	ROUGH CUT, COLOR: CASA BLANCA, BY EL DORADO STONE, OAE.
PRECAST CONCRETE CAP	COLOR: PORTOBELLO BY MESA PRECAST OAE.



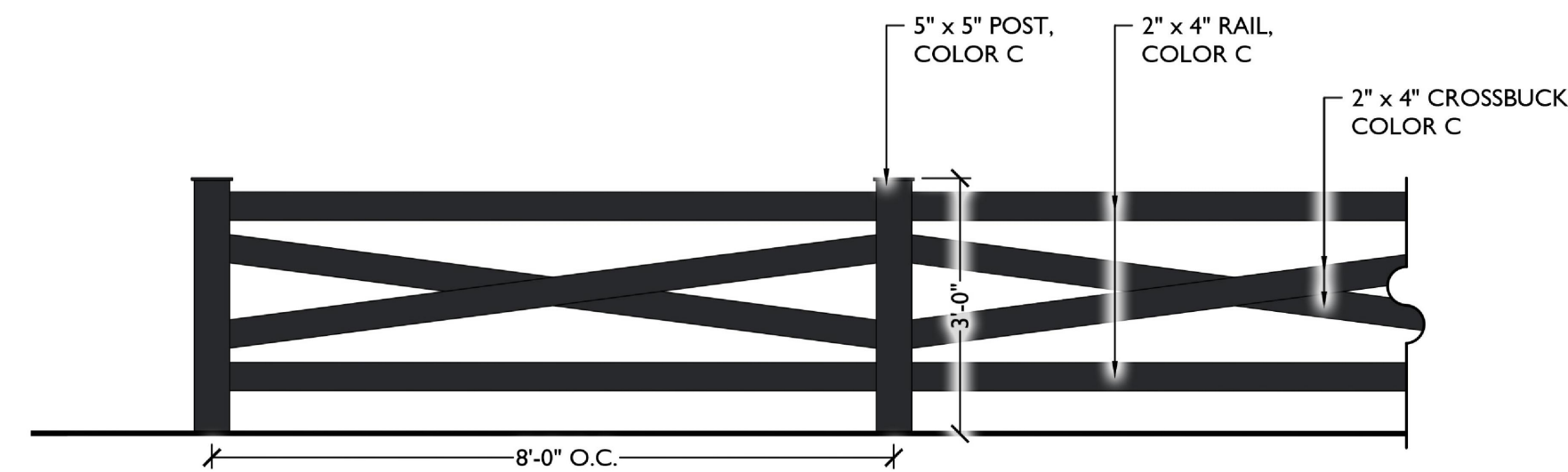
1 PRIMARY THEME WALL
Scale: 1/2" = 1'-0"



2 SECONDARY THEME WALL
Scale: 1/2" = 1'-0"



3 PARTIAL VIEW WALL
Scale: 1/2" = 1'-0"



4 RAIL FENCE
Scale: 1/2" = 1'-0"



5 PARK SIGNAGE
Scale: 1/2" = 1'-0"

MATERIALS & COLOR BOARD



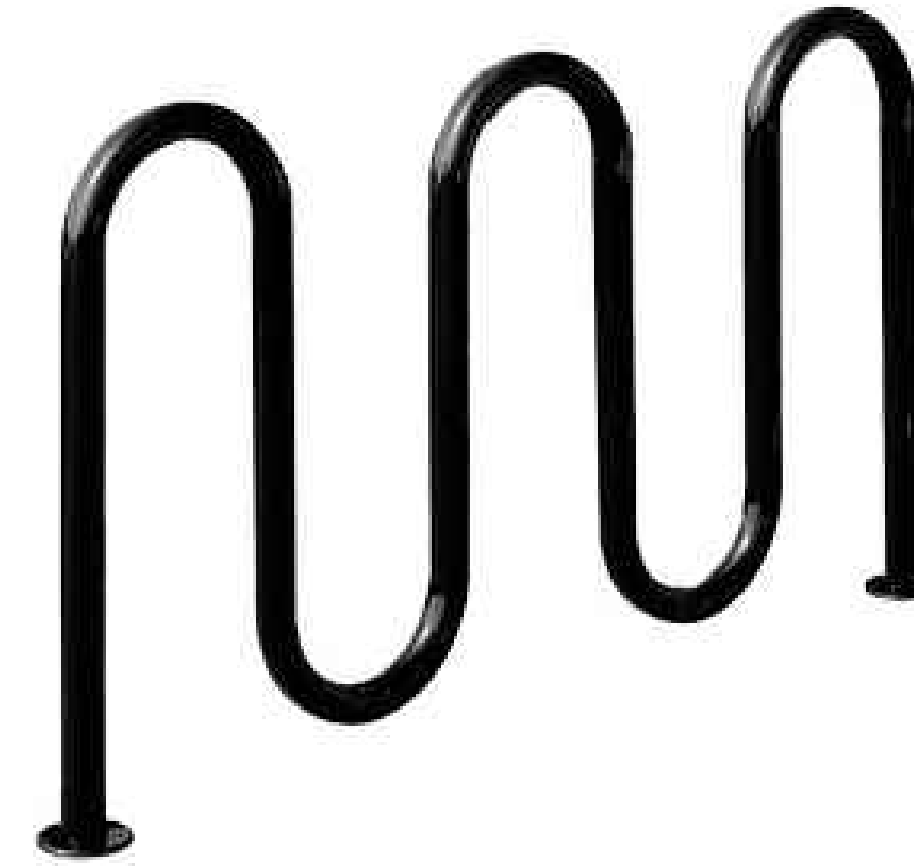
LANDSCAPE BENCH
Model: Rendezvous
Color: Black, By Anova, OAE



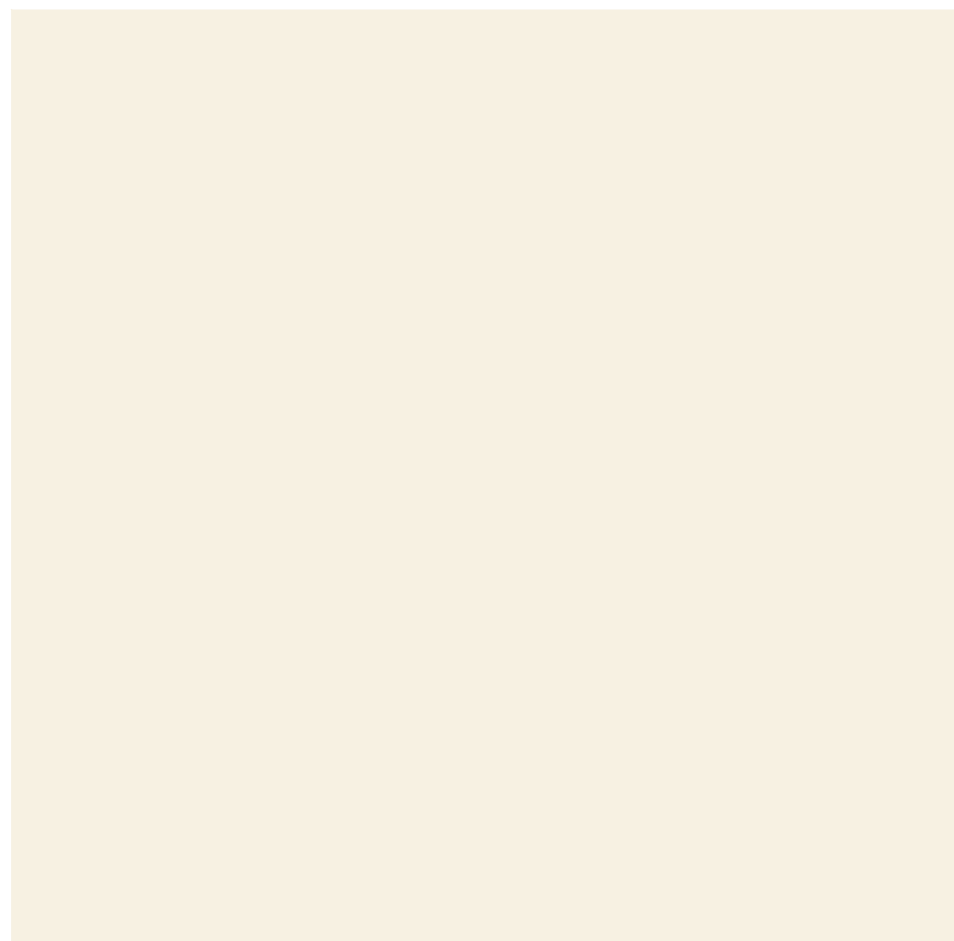
PICNIC TABLE
Model: Rendezvous
Color: Black, By Anova, OAE



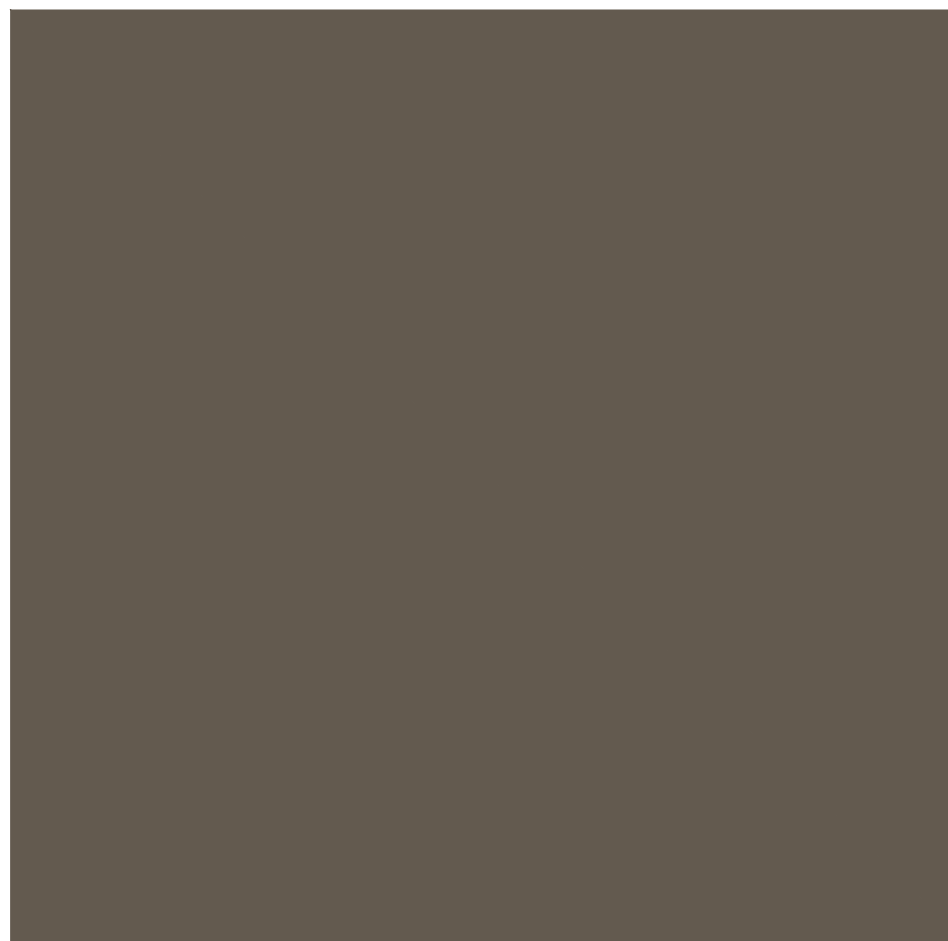
TRASH RECEPTACLE
Model: Rendezvous
Color: Black, By Anova, OAE



BIKE RACK
Model: Streetside 5-Loop/7 Bike
Color: Black, By Anova, OAE



COLOR A (CMU)
Color: Swan White (DEW346)
By: Dunn Edwards, OAE



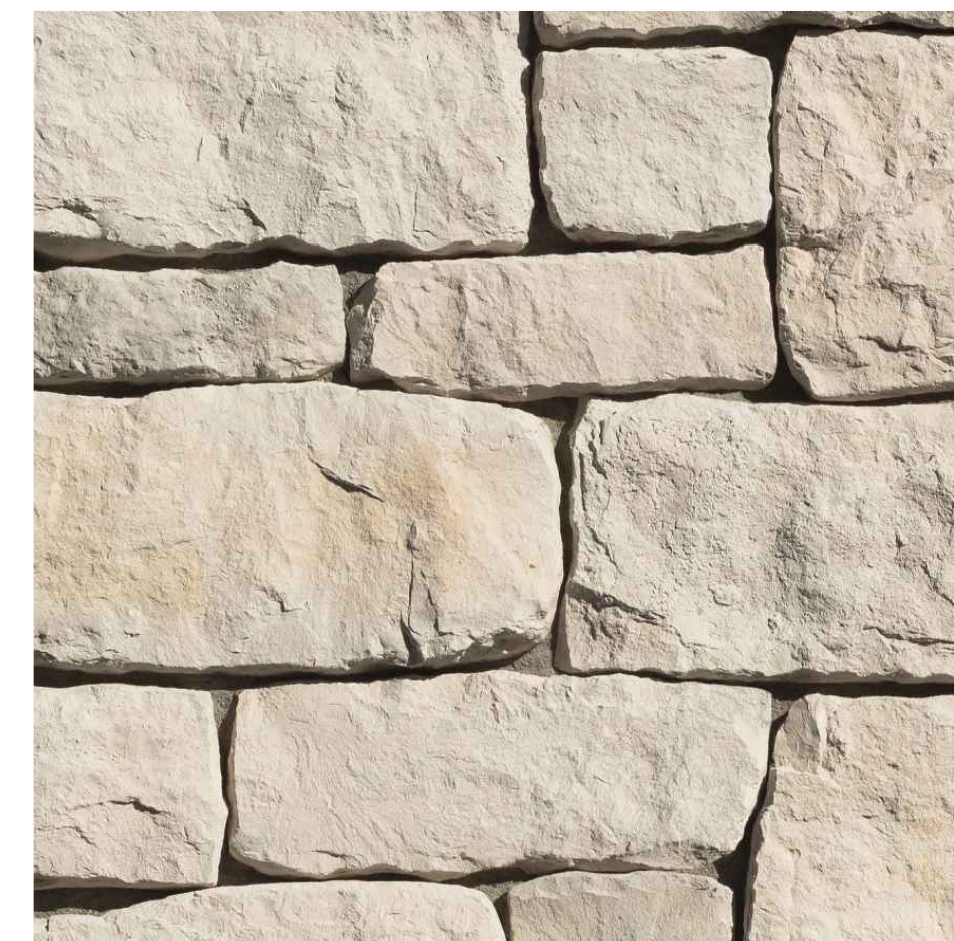
COLOR B (CMU)
Color: Downing To Earth (DEW634)
By: Dunn Edwards, OAE



COLOR C (STEEL)
Powder coated to match RAL 9011 Graphite Black



CONCRETE CAP
Color: Portobello by Mesa Precast OAE



STONE VENEER
Rough Cut, Color Casa Blanca
by Eldorado Stone OAE