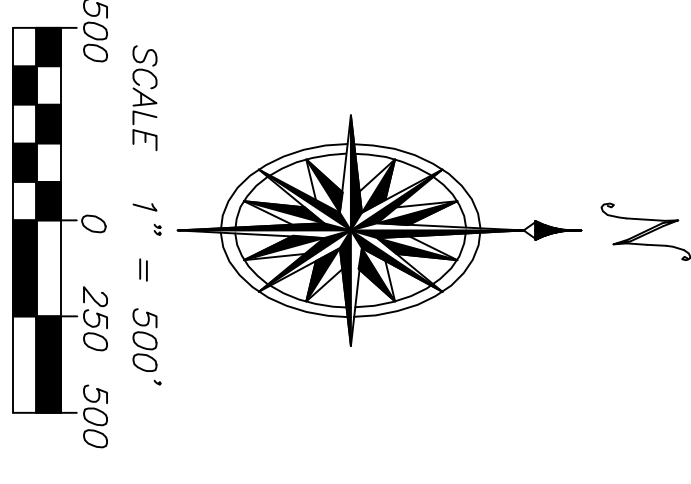
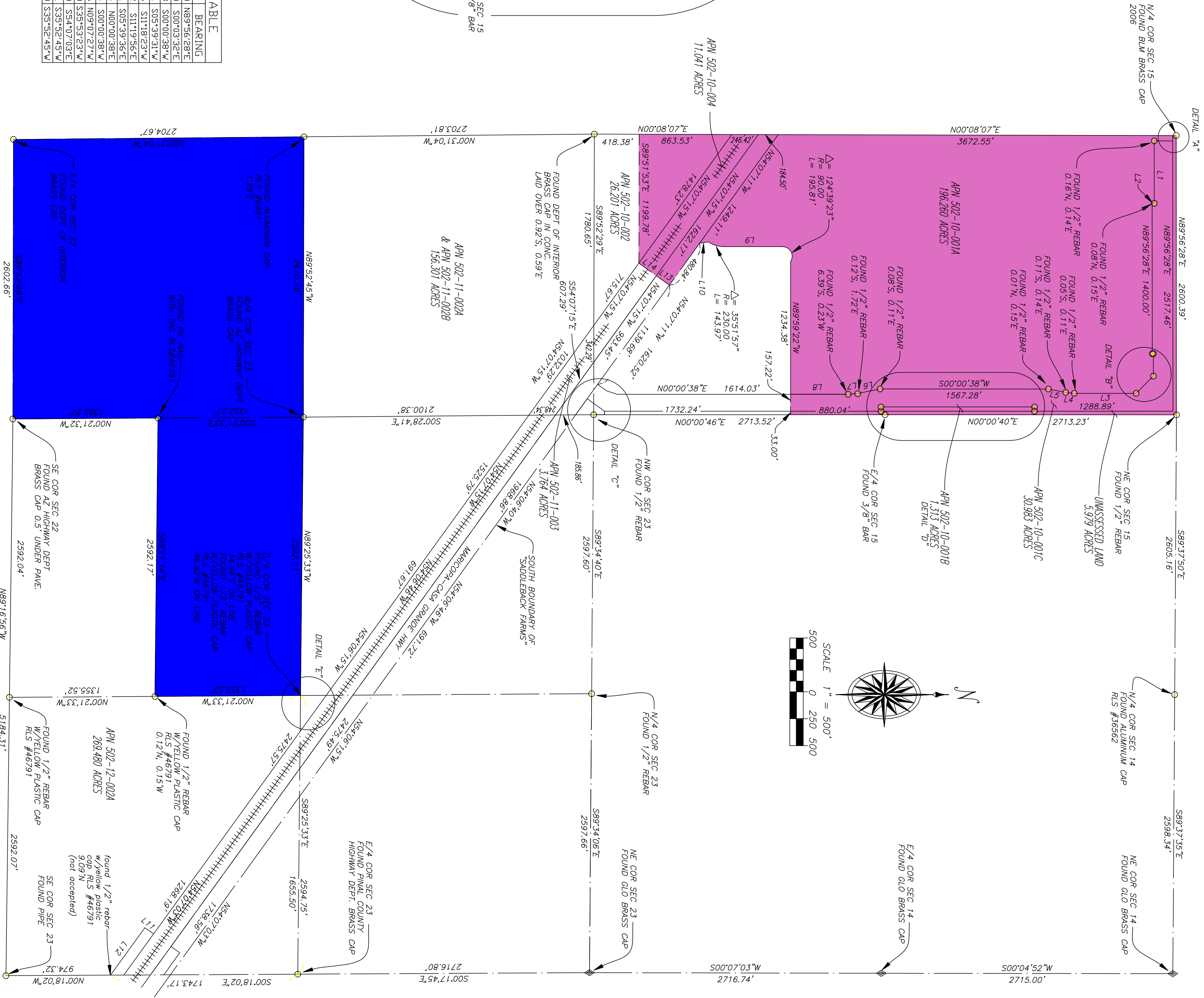
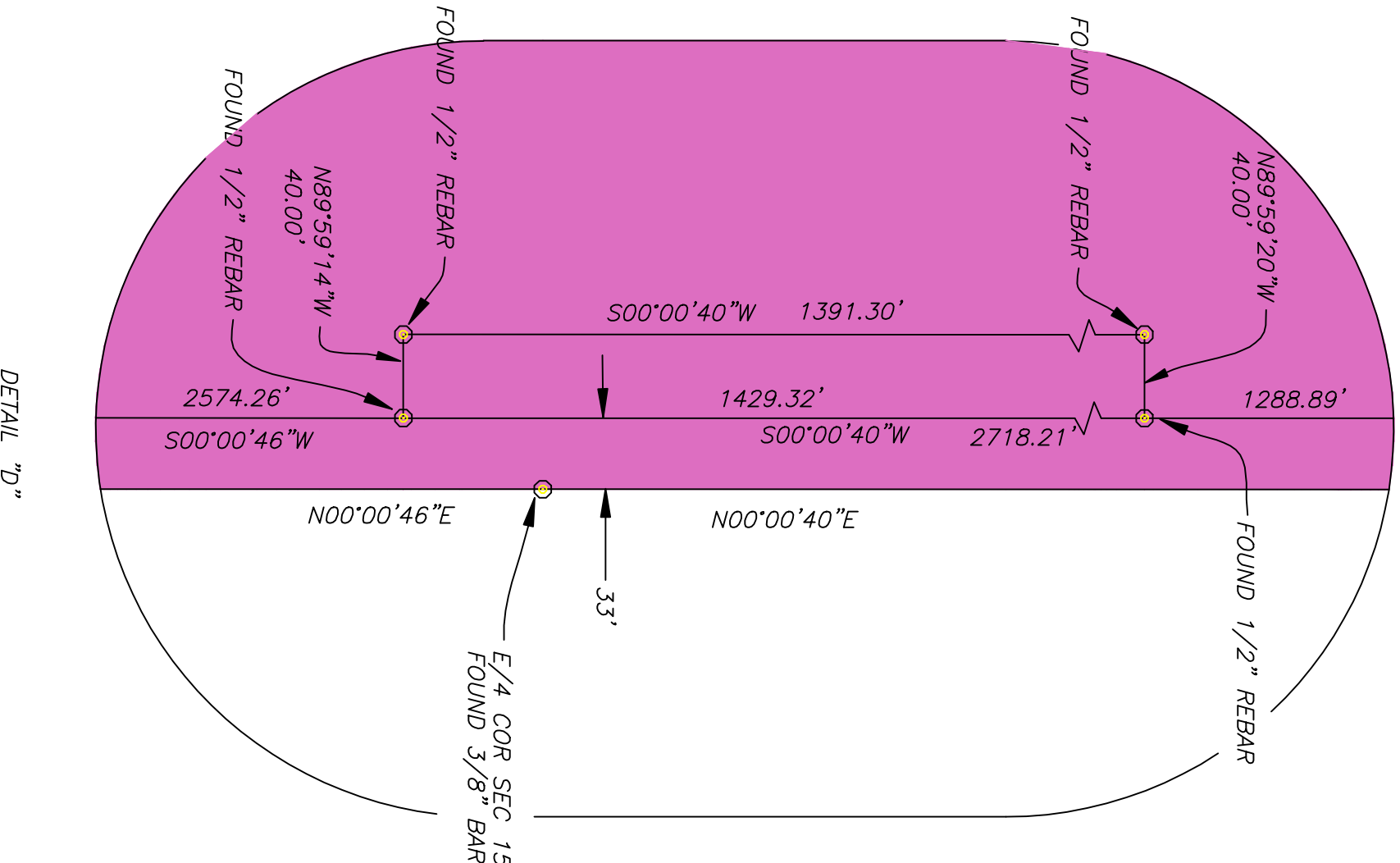
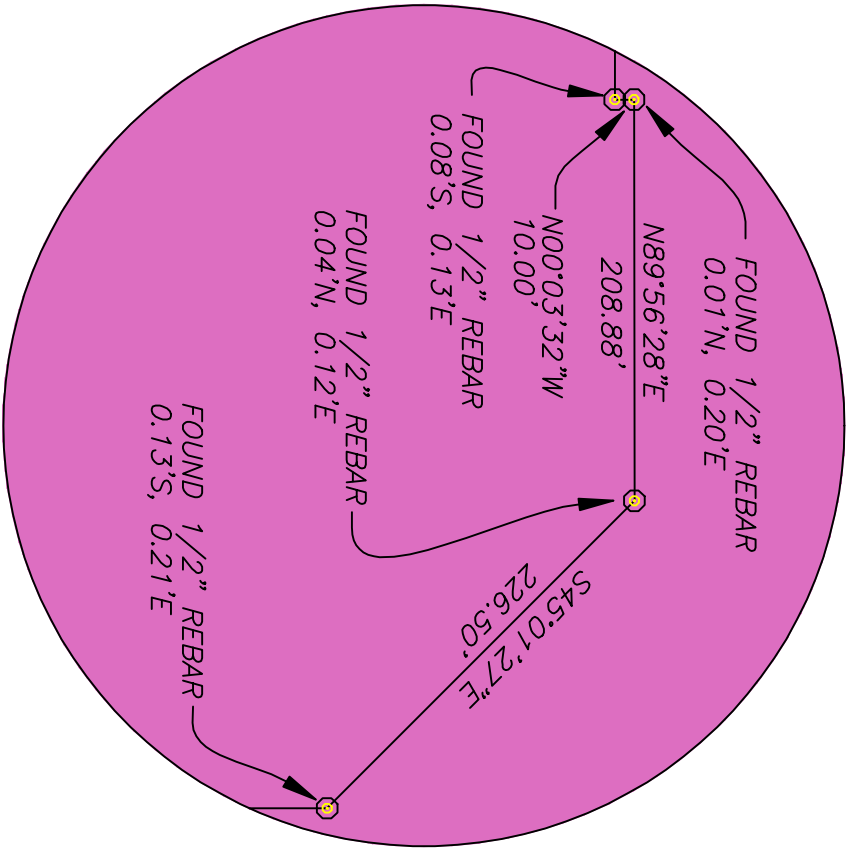
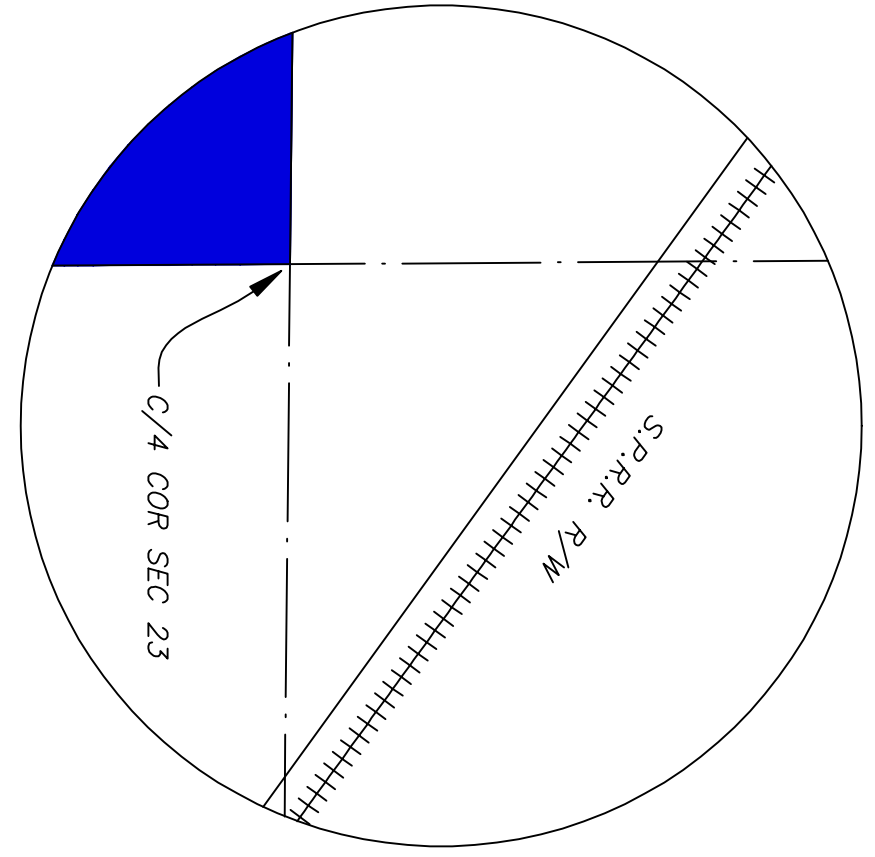
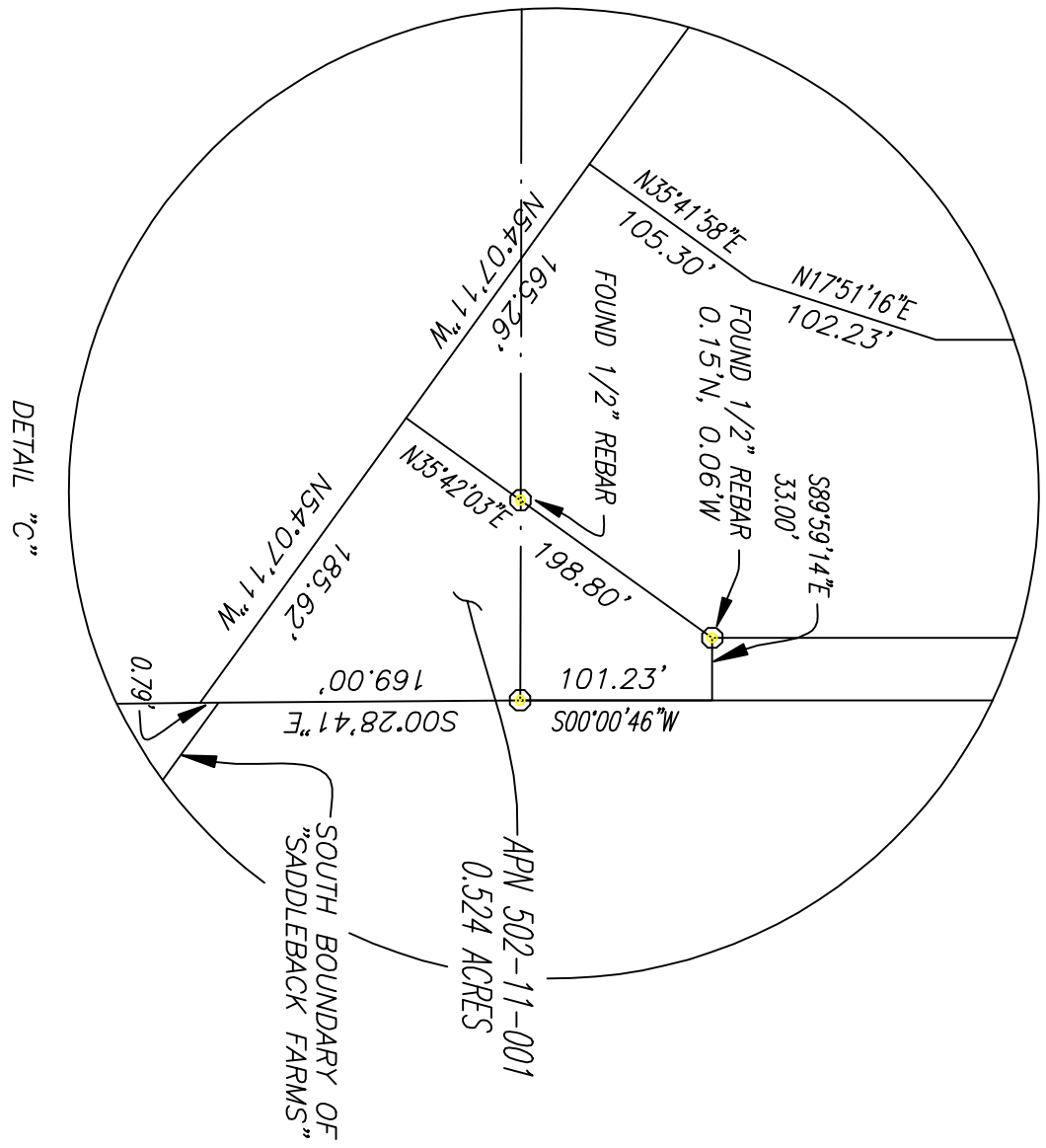
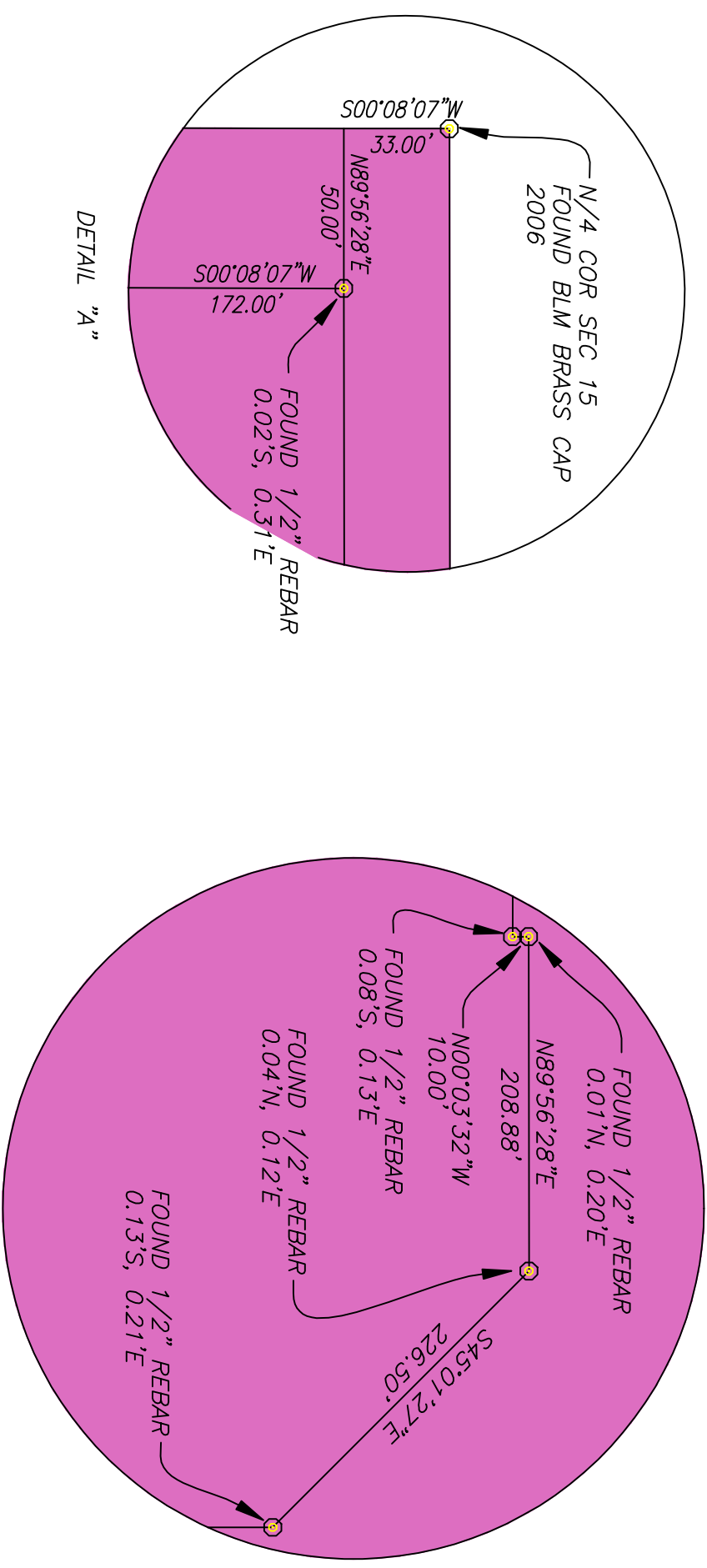


RECORD OF SURVEY



LAND NOT SUBJECT TO ANNEXATION
 STATE TRUST LAND
 LAND SUBJECT TO ANNEXATION

LINE	LENGTH	BEARING
L1	581.40	N89°56'28"E
L2	20.00	S00°03'22"E
L3	576.38	S00°08'38"W
L4	80.71	S05°39'31"W
L5	163.66	S11°18'23"W
L6	212.92	S11°19'56"E
L7	82.21	S05°39'36"E
L8	542.74	N00°00'38"E
L9	556.34	S00°00'38"W
L10	83.26	N09°07'27"W
L11	100.00	S35°53'23"W
L12	545.90	S54°07'03"E
L13	149.71	S35°52'45"W
L14	200.00	S35°52'45"W

SURVEY CERTIFICATE

I hereby certify that this survey was done by me or under my direct supervision, that this plat is a true and correct representation of that survey, and that all monuments shown were found or set accurately as indicated hereon.

Dated: _____

Jeremy R. Dalmacio, R.L.S.
Registration No. 49864

STATE OF ARIZONA } SS
COUNTY OF PINAL }

I hereby certify that the within instrument is filed in the official records of this County in Date: _____

Request of: _____
Witness my hand and official seal.
Laura Deem-Lyle Pinal County Recorder
Deputy

City of Maricopa BOUNDARY SURVEY

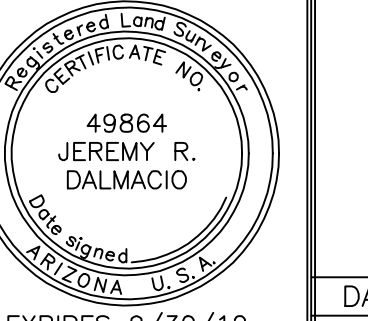
PORTIONS OF SECTION 15,
T5S, R4E, G&SRM, PINAL COUNTY, ARIZONA

DRAWING NO. 120032
SHEET 1 OF 1



HANSEN
ENGINEERING & SURVEYING

115 S. MAIN ST.
COOLIDGE, AZ 85128
(520) 723-3288 FAX (520) 723-3739
WWW.HANSENSURVEY.COM



DATE: APR. 2012 DRAWN BY: CK DESIGN: REVIEW: JRD
SURVEY: REVISED BY: REVISION No.

EXPIRES 9/30/12