



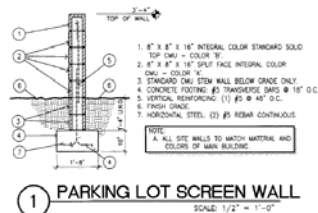
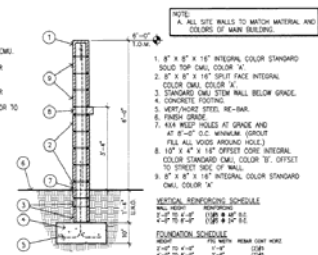
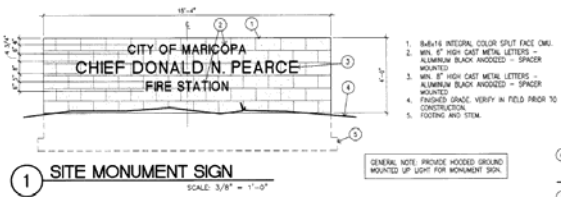
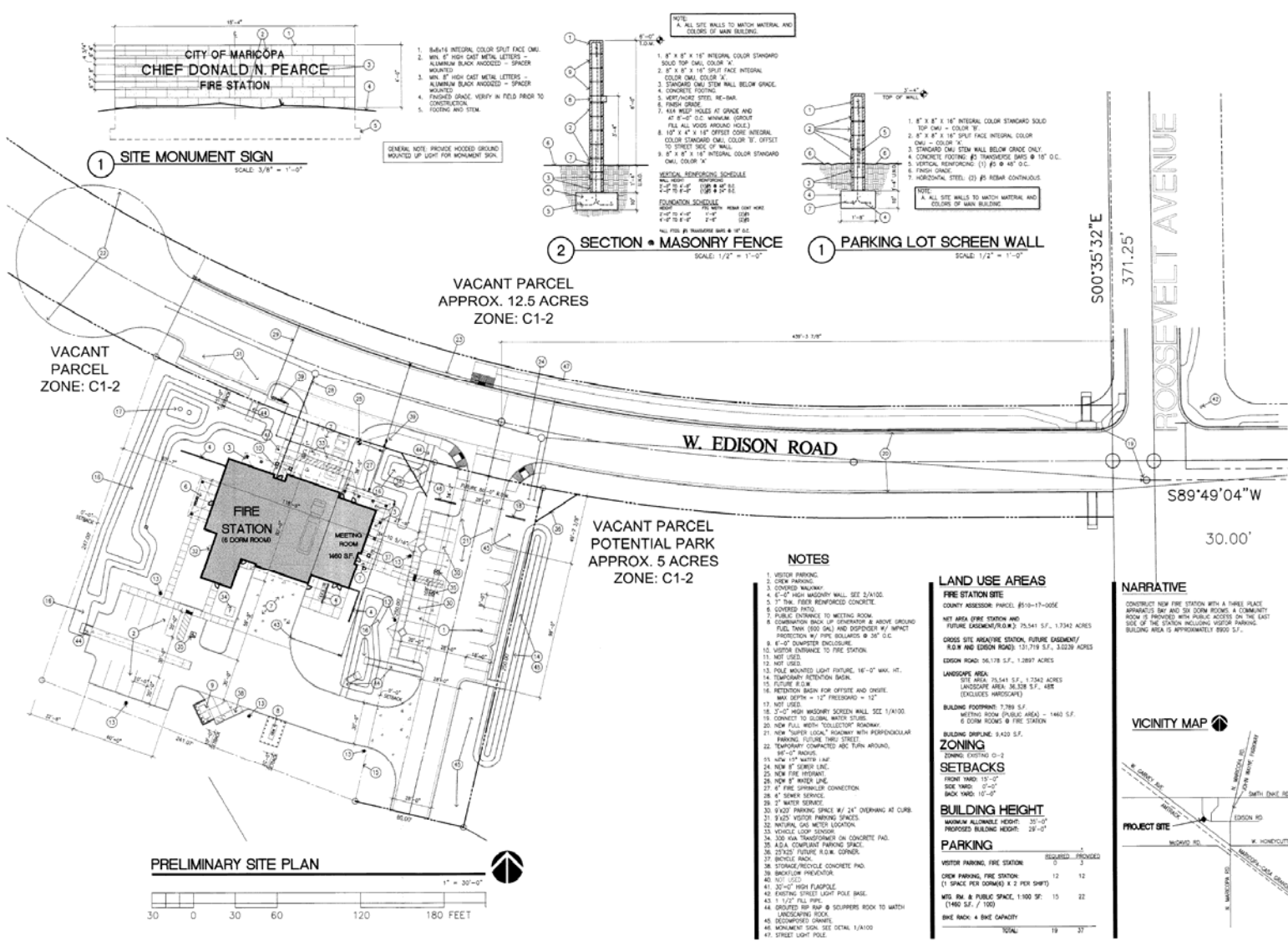
Site Plan Review

12-08

Chief Donald N. Pearce Fire Station







VACANT PARCEL
APPROX. 12.5 ACRES
ZONE: C1-2

VACANT PARCEL
ZONE: C1-2

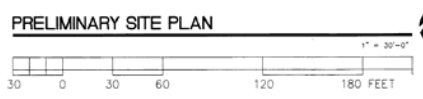
VACANT PARCEL
POTENTIAL PARK
APPROX. 5 ACRES
ZONE: C1-2

W. EDISON ROAD

ROOSEVELT AVENUE

S00°35'32"E
371.25'

S89°49'04"W
30.00'



NOTES

1. VISITOR PARKING
2. CREW PARKING
3. COVERED WALKWAY
4. 6'-0" HIGH MASONRY WALL, SEE 2/A100
5. COVERED PORCH
6. PUBLIC ENTRANCE TO MEETING ROOM
7. COMBINATION BACK LIP STAIRWELL & ABOVE GROUND FUEL TANK (500 GALS) AND DEPENDENT #1 IMPACT PROTECTION BY FIRE BELLWALL @ 30' O.C.
8. 6'-0" DIAMETER ENCLOSURE
9. VISITOR ENTRANCE TO FIRE STATION
10. NOT USED
11. NOT USED
12. 12" x 12" x 16" (1) #5 @ 16" O.C.
13. POLE MOUNTED LIGHT FIXTURE, 16'-0" MAX. HT.
14. TEMPORARY RETENTION BASIN
15. FUTURE #10 M
16. RETENTION BASIN FOR OFFSITE AND ONSITE, MAX. DEPTH = 12" FREEBOARD = 12"
17. NOT USED
18. 2'-0" HIGH MASONRY SCREEN WALL, SEE 1/A100
19. CONNECT TO EXISTING WATER STUDY
20. NEW FULL WIDTH "COLLECTOR" ROADWAY
21. NEW "TURNER" LOCAL ROADWAY WITH PERPENDICULAR PARKING, FUTURE THIRD STREET
22. TEMPORARY COMPACTED 400 TONS AROUND, 16'-0" RADIUS
23. NEW 10" WATER L&P
24. NEW 8" SEWER LINE
25. NEW FIRE HYDRANT
26. NEW 8" WATER LINE
27. #1 FIRE SPRINKLER CONNECTION
28. #1 SEWER SERVICE
29. #1 WATER SERVICE
30. 8'x20' PARKING SPACE #1/24' OVERHANG AT CURB
31. 8'x20' VISITOR PARKING SPACES
32. METRIC GAS METER LOCATION
33. VEHICLE LOOP SIGNATOR
34. 300 KVA TRANSFORMER ON CONCRETE PAD
35. ADA COMPLIANT PARKING SPACE
36. 20'x25' VISITOR #10 M SIGNATOR
37. BICYCLE RACK
38. STORAGE RECYCLE CONCRETE PAD
39. BRACKLEW PREVENTOR
40. #1
41. 30'-0" HIGH FLUAPSOLE
42. FINISH STREET LIGHT POLE BASE
43. 1 1/2" FULL PIPE
44. DISCONNECT SIGN @ SLIPPERS ROAD TO MATCH LANDSCAPING PLAN
45. DISCONNECT SIGN @ SLIPPERS ROAD TO MATCH LANDSCAPING PLAN
46. MONUMENT SIGN, SEE DETAIL 1/A100
47. STREET LIGHT POLE

LAND USE AREAS

FIRE STATION SITE
COUNTY ASSESSOR: PARCEL #510-17-005E
NET AREA (FIRE STATION AND FUTURE LANDSCAPING): 75,541 S.F., 1.7343 ACRES
GROSS SITE (NARRATIVE STATION, FUTURE SIGNMENT/ R.O.M. AND EDISON ROAD): 131,719 S.F., 3.0239 ACRES
EDISON ROAD: 56,178 S.F., 1.2897 ACRES

LANDSCAPE AREA
SITE AREA: 75,541 S.F., 1.7343 ACRES
LANDSCAPE AREA: 38,528 S.F., .881 ACRES (EXCLUDES HORIZONTALS)

BUILDING FOOTPRINT: 7,788 S.F.
MEETING ROOM (PUBLIC AREA) - 1,440 S.F.
6 OFFICE ROOMS & FIRE STATION

BUILDING SPILLAGE: 3,420 S.F.

ZONING
ZONING EXISTING: O-2

SETBACKS
FRONT YARD: 13'-0"
SIDE YARD: 5'-0"
BACK YARD: 10'-0"

BUILDING HEIGHT
MAXIMUM ALLOWABLE HEIGHT: 35'-0"
PROPOSED BUILDING HEIGHT: 28'-0"

PARKING

VISITOR PARKING, FIRE STATION	REQUIRED	PROVIDED
CREW PARKING, FIRE STATION	12	12
(1 SPACE PER OFFICER) x 2 PER SHIFT		
W/O IN. & PUBLIC SPACE, 1100 SF.	15	22
1100 SF. / 100		
Bike Rack 4 Bike Capacity		
TOTAL	19	37

NARRATIVE

CONSTRUCT NEW FIRE STATION WITH A THREE PLACE APPROXIMATE 8'x12' SIGN, A COMMUNITY ROOM (3' PROVIDED WITH PUBLIC ACCESS) ON THE EAST SIDE OF THE STATION INCLUDING VISITOR PARKING. BUILDING AREA IS APPROXIMATELY 8000 S.F..

VICINITY MAP



CITY OF MARICOPA
CHIEF DONALD N. PEARCE F.S. 575
6885 WEST EDISON ROAD
MARICOPA, ARIZONA 85181

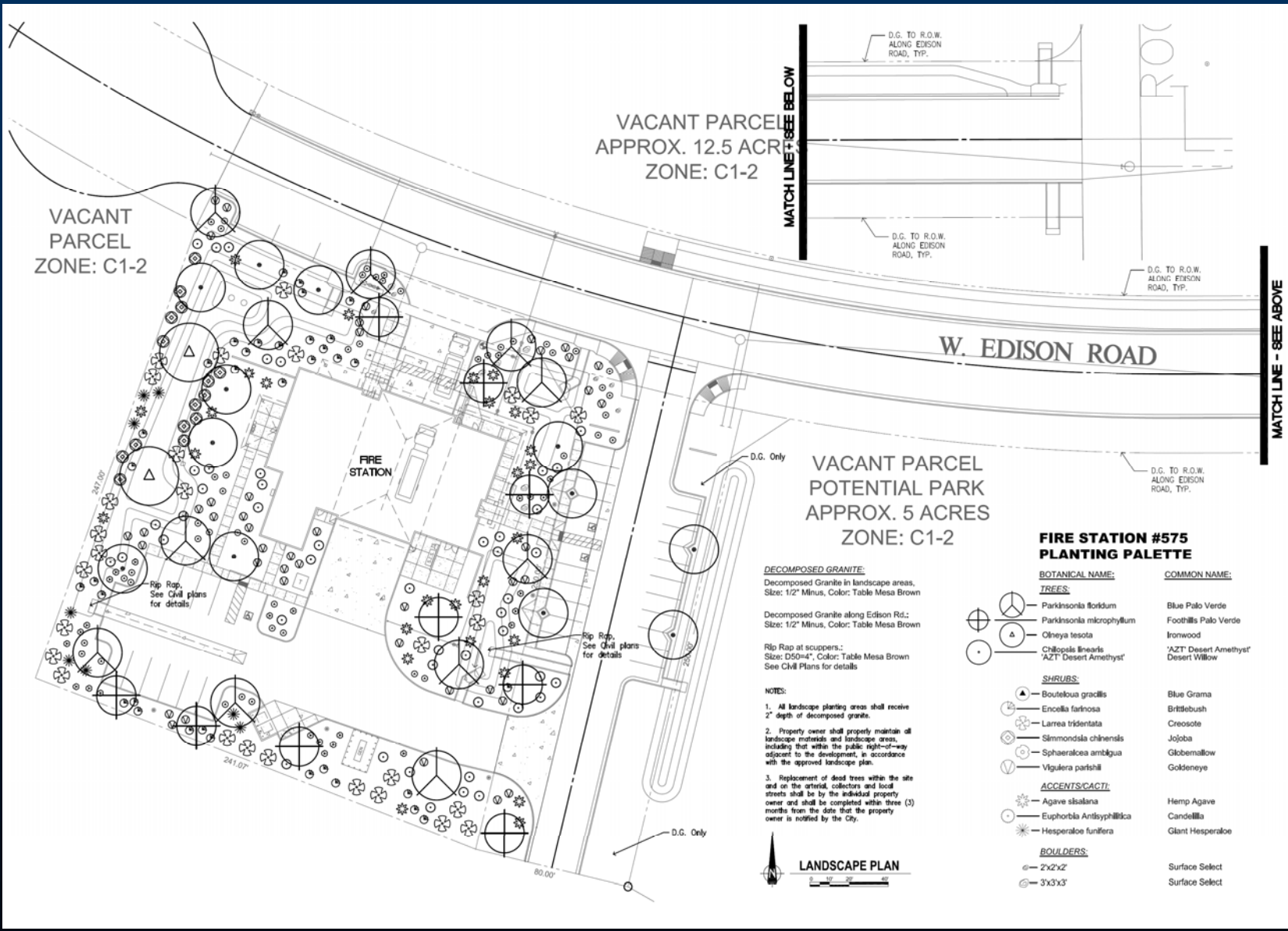
HDA ARCHITECTS, L.L.C.
459 N. GILBERT ROAD SUITE C-200 GILBERT, AZ 85234
TEL: (480) 559 8500 FAX: (480) 559 6508

HDA ARCHITECTS, L.L.C.
SITE PLAN AND PROJECT INFORMATION

Sheet No. **A100**

SPR12-08





DECOMPOSED GRANITE:
Decomposed Granite in landscape areas,
Size: 1/2" Minus, Color: Table Mesa Brown

Decomposed Granite along Edison Rd.,
Size: 1/2" Minus, Color: Table Mesa Brown

Rip Rap at scuppers.,
Size: D50=4", Color: Table Mesa Brown
See Civil Plans for details

- NOTES:**
- All landscape planting areas shall receive 2" depth of decomposed granite.
 - Property owner shall properly maintain all landscape materials and landscape areas, including that within the public right-of-way adjacent to the development, in accordance with the approved landscape plan.
 - Replacement of dead trees within the site and on the arterial, collectors and local streets shall be by the individual property owner and shall be completed within three (3) months from the date that the property owner is notified by the City.



FIRE STATION #575 PLANTING PALETTE

BOTANICAL NAME:	COMMON NAME:	
TREES:		
⊕	Parkinsonia floridum	Blue Palo Verde
△	Parkinsonia microphyllum	Foothills Palo Verde
○	Olneya tesota	Ironwood
⊙	Chilopsis linearis	'AZT' Desert Amethyst'
⊙	'AZT' Desert Amethyst'	Desert Willow
SHRUBS:		
▲	Bouteloua gracilis	Blue Grama
⊕	Encelia farinosa	Brittlebush
⊕	Larrea tridentata	Creosote
⊕	Slimmondsia chinensis	Jojoba
⊕	Sphaeralcea ambigua	Globeamallow
∇	Viguiera parviflora	Goldeneye
ACCENTS/CACTI:		
⊕	Agave sisalana	Hemp Agave
⊕	Euphorbia Antisyphilitica	Candleilla
⊕	Hesperaloe funifera	Giant Hesperaloe
BOULDERS:		
⊕	2'x2'x2'	Surface Select
⊕	3'x3'x3'	Surface Select

CITY OF MARICOPA
CHIEF DONALD N. PEARCE F.S. 575
45995 WEST EDISON ROAD
MARICOPA, ARIZONA 85138

EXPIRES: 09/30/2014
Job No. 11-0038
Checked: [Signature]
Designed: [Signature]
Reviewed: [Signature]

95% SET

J2 Engineering & Environmental Design
4649 E. Cotton Gin Loop B2 Phoenix, Az 85040
TEL: (602) 438 2221 FAX: (602) 438 2225
LANDSCAPE_PLAN

Sheet No.
L301





SITE LIGHTING PHOTOMETRY PLAN

1" = 30'-0"

Symbol	Label	Qty	Quantity Number	Description	Height	Lumens	LF	Watts
⊙	SA 1	1		SUN VALLEY MISC P.O. 10 FT PT DARK BRONZE H/3 POLE 1500 BASE 400	20" W X 34" H MOUNT LUMINAIRE HEAD TYPE B SPECULAR REFLECTOR WITH INSIDE SIDE SHIELD FULL CUTOFF DARK BRONZE OVERALL HEIGHT 14.75	1100	0.81	100
	SA			AAL PROVIDENCE P.O. 10 FT PT DARK BRONZE	23.6" W X 36" H MOUNT LUMINAIRE HEAD TYPE B SPECULAR REFLECTOR WITH INSIDE SIDE SHIELD FULL CUTOFF DARK BRONZE OVERALL HEIGHT 14.75			
⊙	SB 2	2		SUN VALLEY MISC P.O. 10 FT PT DARK BRONZE H/3 POLE 1500 BASE 400	20" W X 34" H MOUNT LUMINAIRE HEAD TYPE B SPECULAR REFLECTOR FULL CUTOFF DARK BRONZE OVERALL HEIGHT 14.75	1100	0.81	100
	SB			AAL PROVIDENCE P.O. 10 FT PT DARK BRONZE	23.6" W X 36" H MOUNT LUMINAIRE HEAD TYPE B SPECULAR REFLECTOR FULL CUTOFF DARK BRONZE OVERALL HEIGHT 14.75			
⊙	SC 3	3		SUN VALLEY MISC P.O. 10 FT PT DARK BRONZE H/3 POLE 1500 BASE 400	20" W X 34" H MOUNT LUMINAIRE HEAD TYPE B SPECULAR REFLECTOR FULL CUTOFF DARK BRONZE OVERALL HEIGHT 14.75	1100	0.81	100
	SC			AAL PROVIDENCE P.O. 10 FT PT DARK BRONZE	23.6" W X 36" H MOUNT LUMINAIRE HEAD TYPE B SPECULAR REFLECTOR FULL CUTOFF DARK BRONZE OVERALL HEIGHT 14.75			
□	SD 4	4		SUN VALLEY MOUNT LUMINAIRE HEAD TYPE B SPECULAR REFLECTOR FULL CUTOFF DARK BRONZE OVERALL HEIGHT 14.75	20" W X 28" H MOUNT LUMINAIRE HEAD TYPE B SPECULAR REFLECTOR FULL CUTOFF DARK BRONZE OVERALL HEIGHT 14.75	800	0.81	100
	SD			AAL PROVIDENCE P.O. 10 FT PT DARK BRONZE	23.6" W X 36" H MOUNT LUMINAIRE HEAD TYPE B SPECULAR REFLECTOR FULL CUTOFF DARK BRONZE OVERALL HEIGHT 14.75			
□	SE 5	5		SUN VALLEY MOUNT LUMINAIRE HEAD TYPE B SPECULAR REFLECTOR FULL CUTOFF DARK BRONZE OVERALL HEIGHT 14.75	16" W X 31" H MOUNT LUMINAIRE HEAD TYPE B SPECULAR REFLECTOR FULL CUTOFF DARK BRONZE OVERALL HEIGHT 14.75	400	0.75	44
	SE			AAL PROVIDENCE P.O. 10 FT PT DARK BRONZE	23.6" W X 36" H MOUNT LUMINAIRE HEAD TYPE B SPECULAR REFLECTOR FULL CUTOFF DARK BRONZE OVERALL HEIGHT 14.75			
---	SP 1	1		1.0 LPA-D-08-B- 10	1.0 LPA-D-08-B- 10	2000	0.81	50

PHOTOMETRIC LAYOUT IS BASED ON THE SUN VALLEY FIXTURES

Description	Symbol	Avg	Max	Min	Max/Mn	Avg/Mn
PROPERTY LINE	⊗	0.0%	0.2%	0.0%	N/A	N/A
SITE	+	0.0%	10.0%	0.0%	N/A	N/A



CITY OF MARICOPA
CHIEF DONALD N. PEARCE F.S. 575
4489 WEST EDISON ROAD
MARICOPA, ARIZONA 85338

APPROVED FOR THE CITY OF MARICOPA
DATE: 07-24-17

JOB NO. 1712
DATE: 07-24-17
REVISED: 07-24-17

**95%
SET**

HDA ARCHITECTS, LLC
409 N. Gilbert Road, Suite C-300, Gilbert, AZ 85234
TEL: (480) 559-8800 FAX: (480) 559-8608
MARICOPA, ARIZONA 85234
**SITE LIGHTING PHOTOMETRY PLAN
AND FIXTURE SCHEDULE**

HDA ARCHITECTS, LLC

Sheet No.
ES101

Kramer Consulting Engineers, PLLC
Professional Engineer
2025 North McDowell Road, Suite 100
Phoenix, Arizona 85008
TEL: (602) 998-8800 • FAX: (602) 998-8801
WWW.KRAMERENGINEERS.COM



