

SEC. 36; T4S; R3E

VICINITY MAP
N.T.S.

PROJECT DATA

SITE AREA:	+/- 25.8 AC (gr.)
EXISTING GENERAL PLAN (gr.)	
P (PUBLIC / INSTITUTIONAL)	+/- 25.8 AC
PROPOSED GENERAL PLAN (gr.)	
C (COMMERCIAL)	+/- 4.6 AC
H (HIGH DENSITY RESIDENTIAL)	+/- 21.2 AC

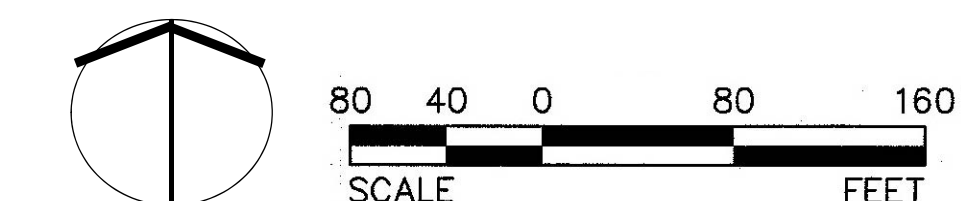
DEVELOPER CONTACT:

EL DORADO RESOURCES CAPITAL, LLC
8501 N SCOTTSDALE RD, SUITE 120
SCOTTSDALE, AZ 85253
CONTACT: BRAD HINTON
V: (602) 955-2424

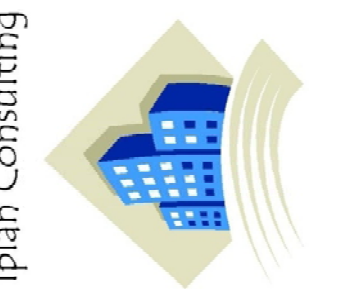
ENTITLEMENTS:

IPLAN CONSULTING
3317 S. HIGLEY RD., STE. 114-622
GILBERT, AZ 85297
CONTACT: GREG DAVIS
V: (480) 227-9850

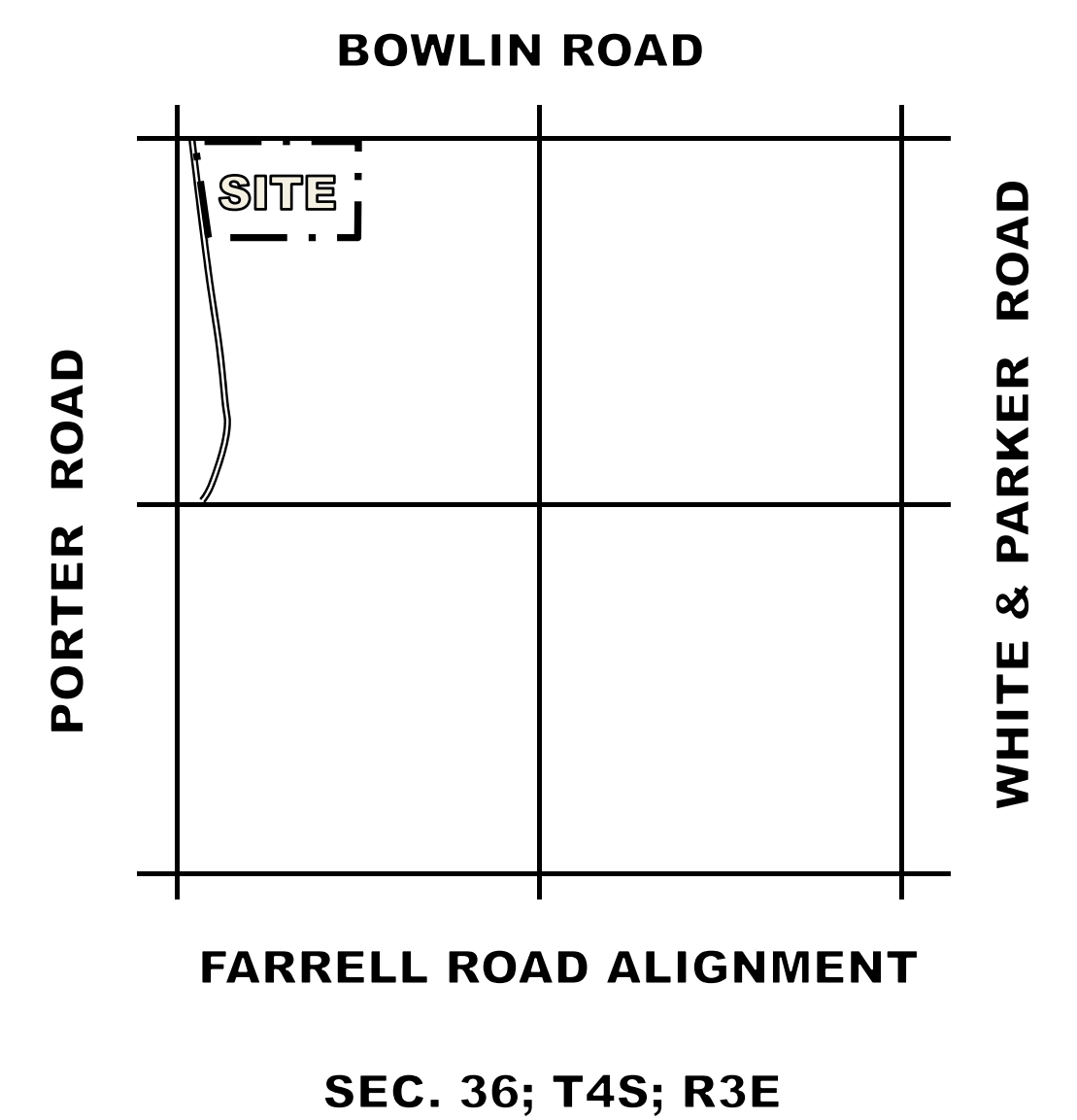
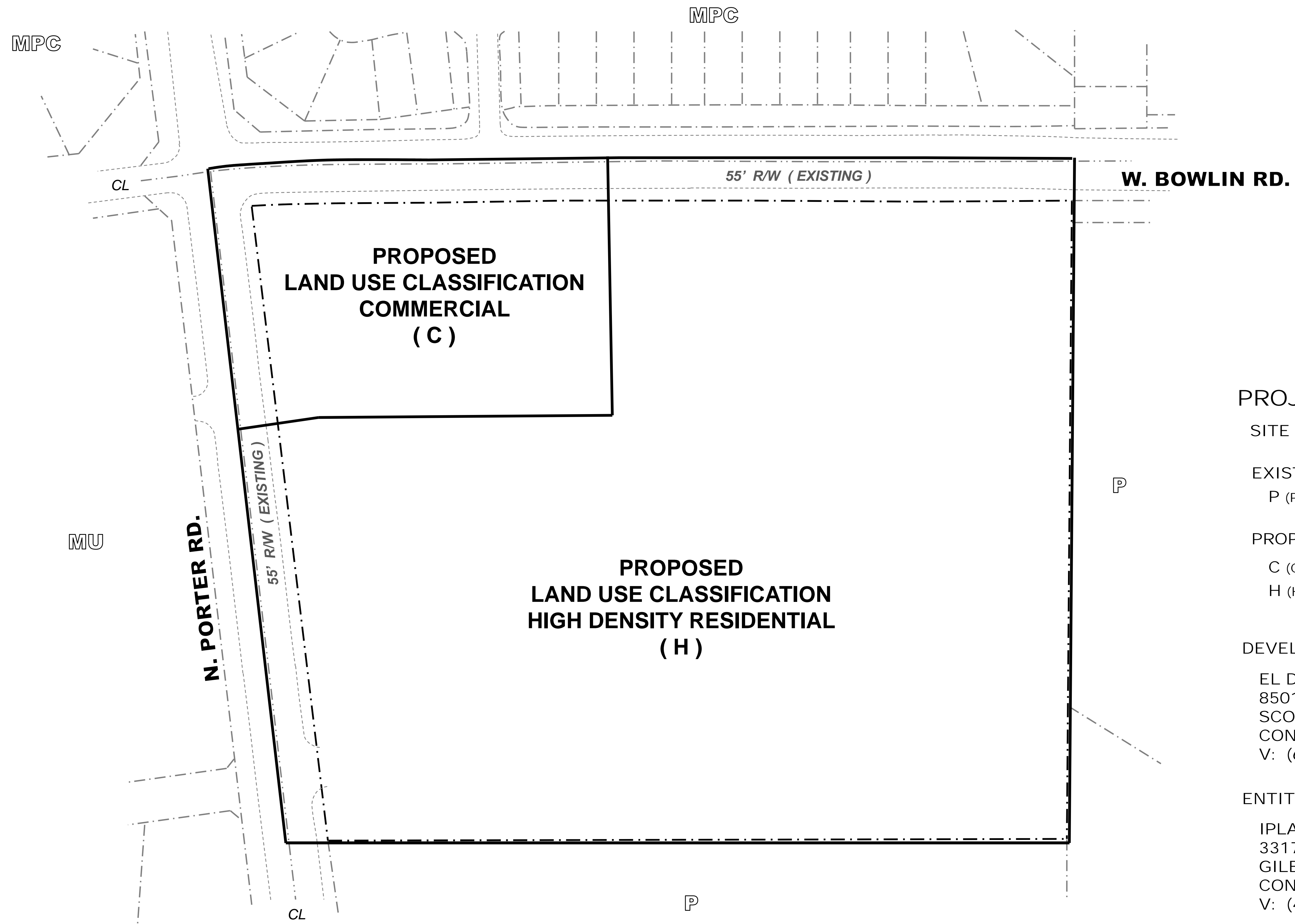
EXISTING GENERAL PLAN



JUNE 24, 2020



GENERAL PLAN AMENDMENT EXHIBIT
 MARICOPA, ARIZONA



VICINITY MAP
N.T.S.

PROJECT DATA

SITE AREA:	+/- 25.8 AC (gr.)
EXISTING GENERAL PLAN (gr.)	
P (PUBLIC / INSTITUTIONAL)	+/- 25.8 AC
PROPOSED GENERAL PLAN (gr.)	
C (COMMERCIAL)	+/- 4.6 AC
H (HIGH DENSITY RESIDENTIAL)	+/- 21.2 AC

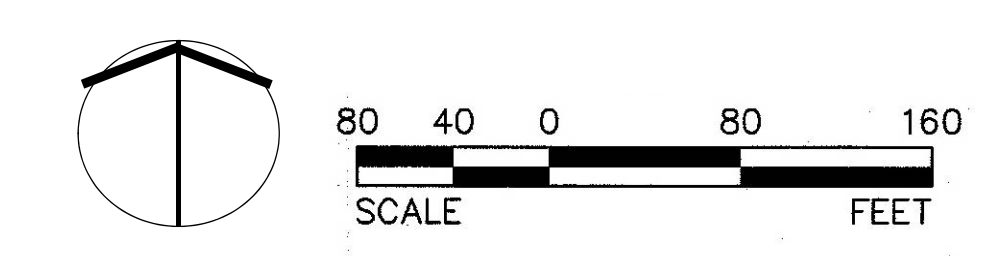
DEVELOPER CONTACT:

EL DORADO RESOURCES CAPITAL, LLC
8501 N SCOTTSDALE RD, SUITE 120
SCOTTSDALE, AZ 85253
CONTACT: BRAD HINTON
V: (602) 955-2424

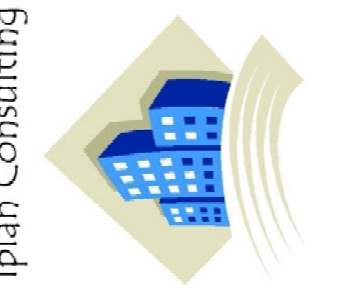
ENTITLEMENTS:

IPLAN CONSULTING
3317 S. HIGLEY RD., STE. 114-622
GILBERT, AZ 85297
CONTACT: GREG DAVIS
V: (480) 227-9850

PROPOSED GENERAL PLAN



JUNE 24, 2020

Iplan Consulting 
GENERAL PLAN AMENDMENT EXHIBIT
MARICOPA, ARIZONA