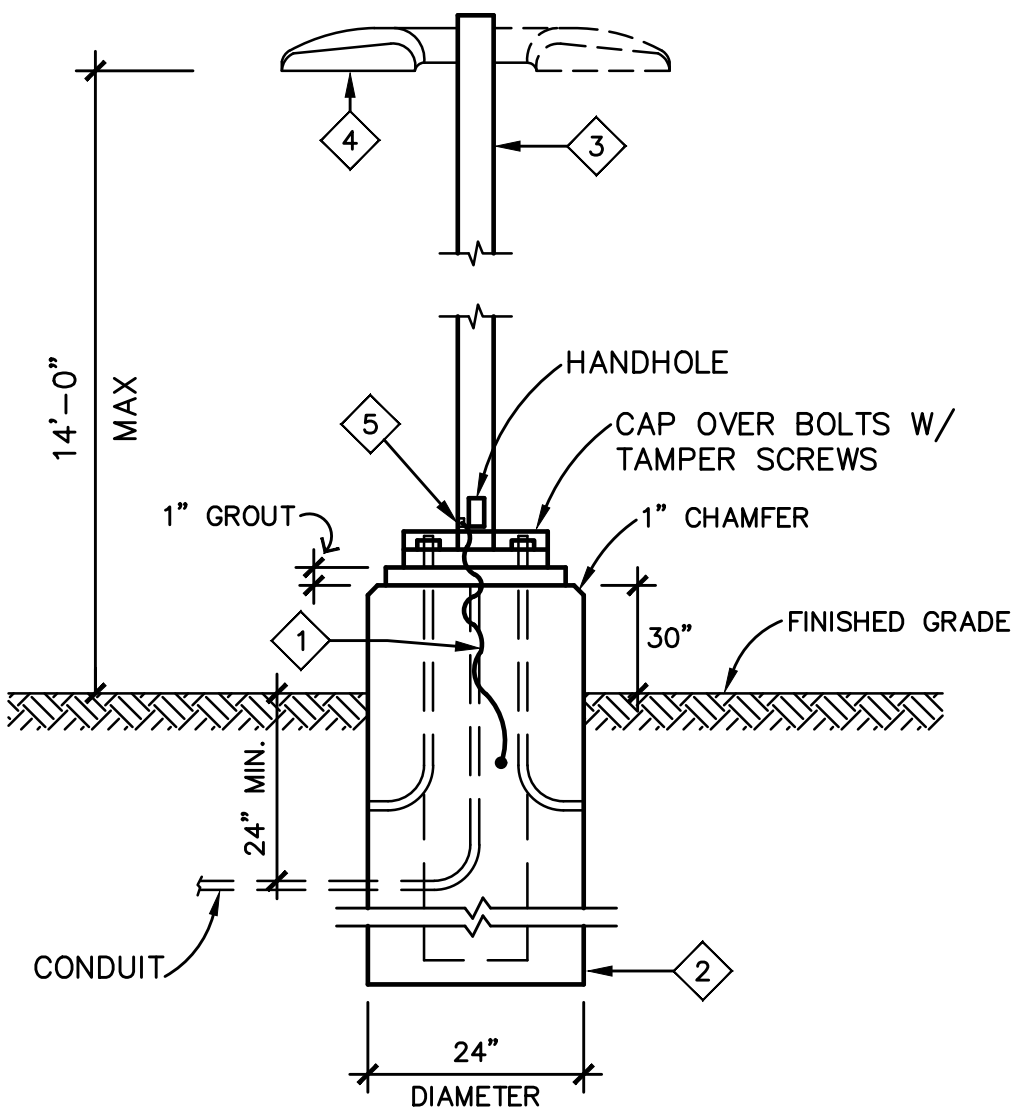


GENERAL NOTES:

- A. ALL EXTERIOR LIGHT FIXTURES TO COMPLY WITH LOCAL NIGHT SKY ORDINANCE.
- B. ALL EXTERIOR LIGHTING AND SIGNAGE TO BE FED WITH #10 CU. U.N.O.
- C. ALL EXTERIOR ELECTRICAL EQUIPMENT TO BE NEMA-3R RATED.
- D. CONTRACTOR TO COORDINATE EXACT SITE LIGHTING FIXTURE LOCATIONS WITH LANDSCAPE DRAWINGS.
- E. ALL FIXTURES INSTALLED OUTDOORS SHALL BE RATED FOR DAMP/WET LOCATIONS AS REQUIRED. THE CONTRACTOR SHALL COORDINATE DAMP/WET LOCATION RATING PER NEC ARTICLE 410.10(A). ALL INSTALLATIONS SHALL CONFORM TO NEC ARTICLE 410.10, ALL SUB ARTICLES.
- F. ALL PVC CONDUIT MUST HAVE A MINIMUM OF #12 CU. GROUND CONDUCTOR.



LIGHT POLE AND FIXTURE

NOTE:
CONTRACTOR SHALL PROVIDE NEW POLE BASES WHERE INDICATED ON PLANS. LIGHTING FIXTURE POLE DETAILS AND DESCRIPTIONS ARE FOR ELECTRICAL REFERENCES ONLY. THE POLE AND BASE SHALL BE DESIGNED BY A STRUCTURAL ENGINEER REGISTERED IN THE STATE OF ARIZONA AND BE STAMPED AND SEALED ACCORDINGLY AS A DEFERRED SUBMITTAL.

KEYED NOTES :

- #4 BARE CU. CONDUCTOR, 20'-0" LONG, COILED CONTINUOUS WITHIN THE LIGHT POLE BASE AND BONDED TO REBAR. NOTE: WIRE MAY BE COILED AT THE BASE OF HOLE.
- CONCRETE BASE SEE STRUCTURAL DRAWINGS.
- 4" SQUARE TO MATCH FIXTURE (100mph RATED)
- SEE FIXTURE SCHEDULE FOR TYPE.
- PROVIDE (2) LUG TERMINAL ATTACHED TO GROUND STUD.

ELECTRICAL PHOTOMETRIC

SCALE: 1" = 30'-0"



MAVEN ENGINEERING Job #25RLM076
Tel: (480) 303-0180
Fax: (480) 302-7927
8011 S Avenida del Yagui
Guadalupe, Arizona 85283
Note: Any changes made to final bid documents due to field changes will be billed hourly to the contractor.

Legacy on Porter
NEC Maricopa - Porter Road and Casa Grande Hwy.
City of Maricopa, AZ

04.08.2025
PROJECT NO. 24112



EXPIRES 09/30/25

SHEET NO.
E0.0

UPWARD ARCHITECTS

1155 W. Rio Salado Parkway, Suite B-101
Tempe, AZ 85281
Ph 602.753.5222 www.upwardarchitects.com

