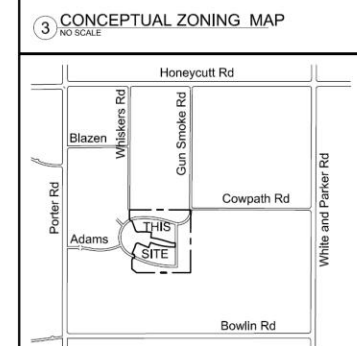
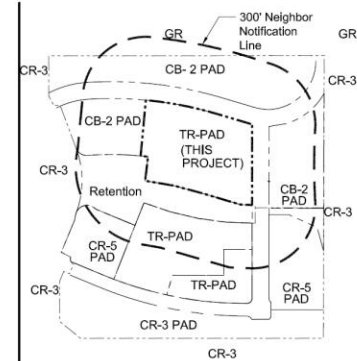




# Site Plan Review

## 12-05 Our Lady of Grace Catholic Church





**SHEET LIST**

SPR.1	Overall Site Plan
SPR.2	Project Site- Phase I
SPR.3	Phase 2 Site - Conceptual
SPR.4	Preliminary Landscape Plan
SPR.5.1	Site Photometry
SPR.5.2	Site Lighting Specification
SPR.6	Phase I - Grading & Drainage
SPR.7	Phase I - Water & Sewer
SPR.8a	Church Elevations (b&w)
SPR.8c	Church Elevations (color)
SPR.9a	Admin Elevations (b&w)
SPR.9c	Admin Elevations (color)
SPR.10a	Phase I & 2 Elevations (b&w)
SPR.10c	Phase I & 2 Elevations (color)



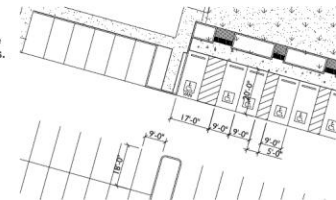
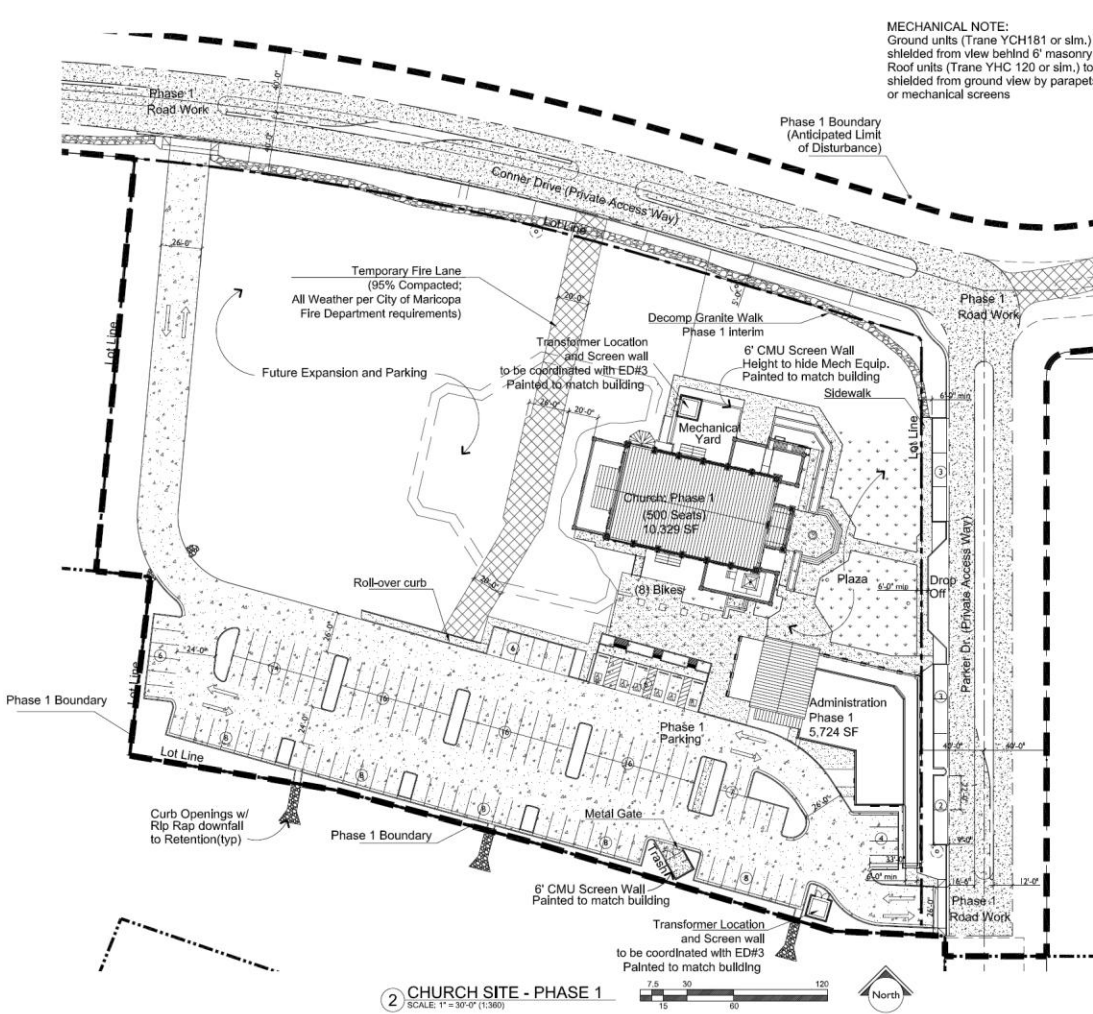
**Liturgical Environs PC**  
9402 South 47th Place  
Phoenix, Arizona 85044  
Office: 480.783.8787  
Fax: 480.783.8787  
Email: steve@liturgicalenvirons.com  
Website: liturgicalenvirons.com

**SITE PLAN REVIEW for**  
**Our Lady of Grace Catholic Church**  
SW Corner of Gunsmoke & Cow Path, Maricopa AZ, 85138  
Our Lady of Grace Roman Catholic Parish - Maricopa



**Overall Site Plan**  
ALL DESIGNS AND DRAWINGS ARE BY  
**LITURGICAL ENVIRONS PC 2012**  
Job Number: **2011-OLGM-03**  
Date: **14 May 2012**  
Drawing Number: **SPR.1**





**Development Standards**

**LOCATION:**  
 SW Corner of Gunsnoke and Cowpath, Maricopa AZ 85138  
 Glenviewe Parcel 17 Rapids (see number 2009-117628)  
 Parcel 512-42-717 (Lot 1)

**ZONING**  
 TR-PAD per PAD P&Z 11-01, adopted 20 March 2012

**ZONING REQUIREMENTS**  
 Required Front Yard Setback: 0 feet  
 Required Side Yard Setback: 0 feet  
 Required Rear Yard Setback: 0 feet  
 Maximum Building Height: 75 feet (note: nonhabitable towers, etc. unlimited)  
 Maximum Lot Coverage: unlimited

**LAND USE DATA**  
 SITE AREA (increase in both net and gross): 37.41 AC  
 Total PAD Project: 1,829,563 SF  
 This Project Phase - Site: 199,928 SF  
 This Project Phase - Roads, etc.: 150,032 SF  
 This Project Phase - TOTAL: 349,960 SF  
 8.83 AC

**LANDSCAPE CALCULATION**  
 Parking Surface: 55,359 SF 27.68%  
 Hardscape (Sidewalks, Patio): 1,123 SF 5.66%  
 Building Road Areas: 18,537 SF 9.27%  
 Landscape: 114,772 SF 57.39%  
 Total Site: 199,928 SF 100%

**BUILDING AREA**  
 Church: 10,329 SF  
 Administration / Social Hall: 5,724 SF  
 Total Building Area: 16,053 SF

**PARKING CALCULATIONS** (Per City of Maricopa Chp 16 Section 2103 modified by PAD P&Z 11-01, adopted 20 March 2012)

**REQUIRED PARKING**

Building	Ratio	Seats	Count
Church (Fixed seats)	1:5	500 seats	100
Administration	1:375	5724 sf	16
Total			116

HIC Spaces (101 - 150 per IBC 1106): 5  
 Standard Parking Spaces: 111

**PROVIDED PARKING**

Parking Lot	Count
Street Parking	8
Total Parking Provided	139

Bicycles: 1:20 139 7

**PARKING ISLAND LANDSCAPE REQUIREMENTS**

Plant Type	Quantity
Trees	18
Bushes	141

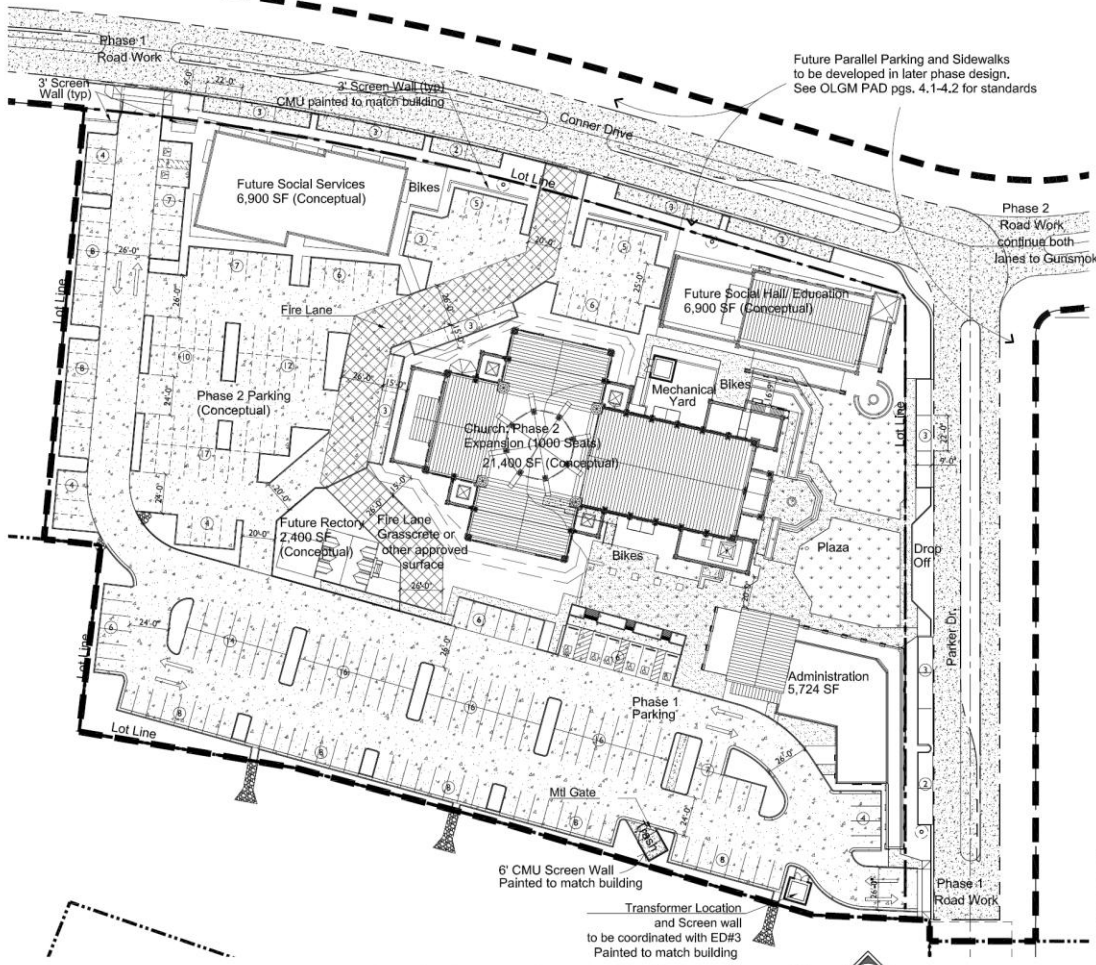


**SITE PLAN REVIEW for**  
**Our Lady of Grace Catholic Church**  
 SW Corner of Gunsnoke & Cow Path, Maricopa AZ, 85138  
 Our Lady of Grace Roman Catholic Parish - Maricopa

Stamp: 21384 STEVEN SCHLORDER 13-14-2012

**Project Site Phase 1**  
 ALL DESIGNS AND DRAWINGS ARE © LITURGICAL ENVIRONMENTS PC 2012  
 Job Number: 2011-OLGM-03  
 Date: 14 May 2012  
 Drawing Number: SPR.2





1 CHURCH SITE - PHASE 2  
SCALE: 1" = 30'-0" (1:360)

**Development Standards (estimated per concept)**

**LOCATION:**  
SW Corner of Gunsnoke and Cowpath, Maricopa AZ 85138  
Glenwide Parcel 17 Replat (see number 2009-117628)  
Parcel 512-42-717 (Lot 1)

**ZONING**  
TR-PAD per PAD PB&Z 11-01, adopted 20 March 2012

**ZONING REQUIREMENTS**

Required Front Yard Setback	0 feet
Required Side Yard Setback	0 feet
Required Rear Yard Setback	0 feet
Maximum Building Height	75 feet (note: nonhabitable towers, etc. unlimited)
Maximum Lot Coverage	unlimited

**LAND USE DATA**

SITE AREA (increase in both net and gross)  
Total PAD Project 1,629,563 SF 37.41 AC  
This Project Phase - TOTAL 199,928 SF 4.59 AC

**LANDSCAPE CALCULATION** (all calculations are conceptual and approximate)

Parking Surface	95,115 SF	47.56%
Hardscape (Sidewalks, Patio)	24,000 SF	12.00%
Building Roof Areas	44,878 SF	22.44%
Landscape	35,995 SF	18.00%
Total Site	199,928 SF	100%

**BUILDING AREA** (conceptual and approximate)

Church	21,400 SF
Administration/ Social Hall	5,724 SF
Rectory w/ Garage	2,400 SF
Social Services	6,900 SF
Social Hall/ Education	6,900 SF
Total Building Area	43,324 SF

**PARKING CALCULATIONS**  
(Per City of Maricopa Chap 16 Section 2103 modified by PAD PB&Z 11-01, adopted 20 March 2012)

**REQUIRED PARKING** (estimated per concept)

Building	Ratio	Basis	Count
Church (fixed seats)	1:5	1500 seats	300
Administration	1:375	5,724 sf	16
Rectory (garage parking)	1:375	6,900 sf	18
Social Services	1:375	6,900 sf	18
Social Hall/ Education	1:375	6,900 sf	18
Total			354

**HIC Spaces** (301-400 per IBC 1106) 8  
Standard Parking Spaces 346

**PROVIDED PARKING**

Parking Lot	243 (includes 8 HIC spaces)
Rectory Garage	2
Shown Street Parking	22
Assumed Street and Shared Parking	87
Total Parking Provided	354

\*Note: Per "Our Lady of Grace Planned Area Development PAD Booklet" approved 3/20/12; pg. 7.3:  
"On street parking con. and shall be assumed to accommodate any additional parking requirements for any type of zoning or function that may require it."

Minimum Assumed Street Parking Calculation:  
Length of Streets (centerline) = +/- 3200 LF  
Assume: 1 car per 60 LF x 2 sides = (3200 x 2)/60 = 107 Street Parking Spaces

Bicycles	1:20	354	18
----------	------	-----	----

**PARKING ISLAND LANDSCAPE REQUIREMENTS\***

Trees	1:8	354	44
Bushes	2:8	354	88

\*Note: Phase Two landscape plans to be developed at time of submission for that phase.



1 CHURCH AERIAL - PHASE 2 (Concept)  
NO SCALE

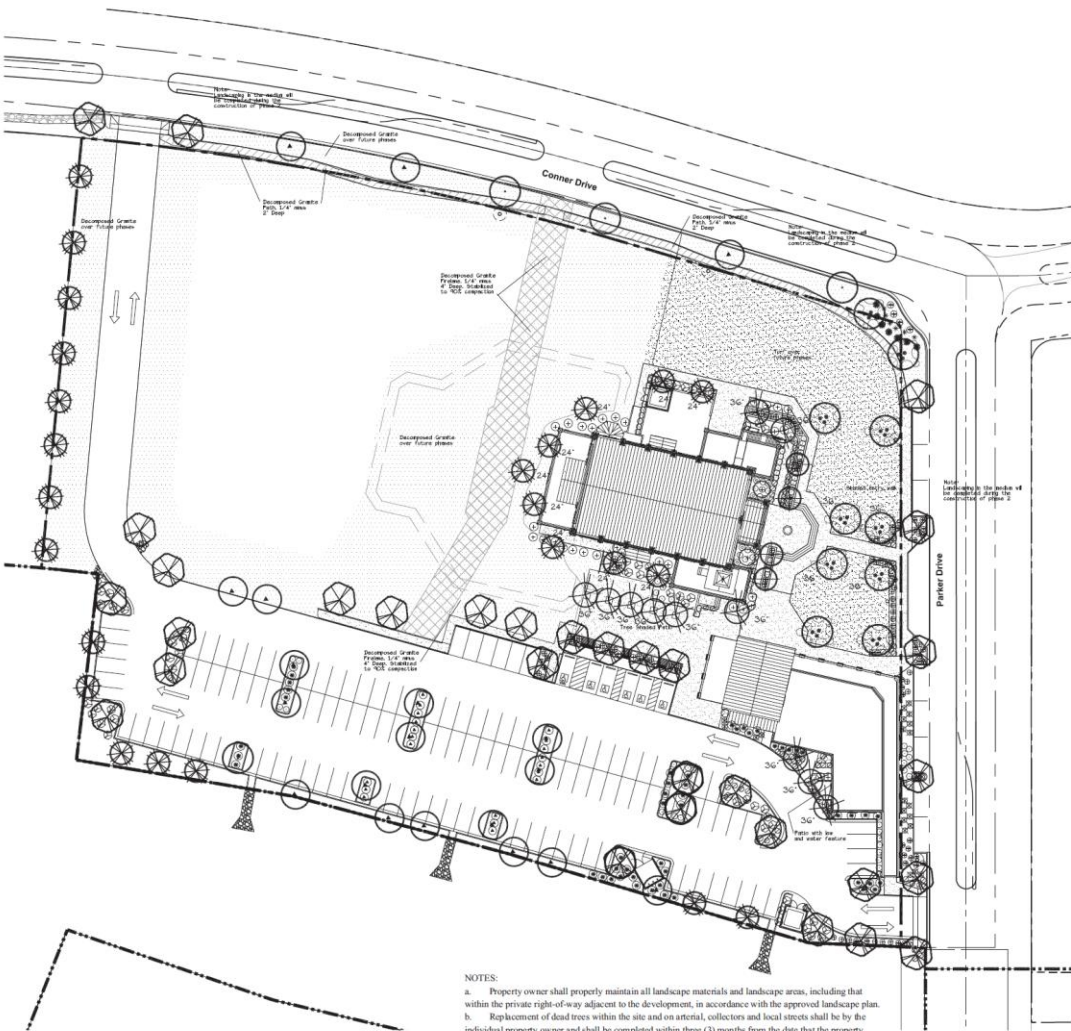
**Liturgical Environs PC**  
9402 South 47th Place  
Phoenix, Arizona 85044  
Office: 480.783.8787  
Fax: 480.783.8787  
Email: steve@liturgicalenvirons.com  
Website: liturgicalenvirons.com

**SITE PLAN REVIEW for**  
**Our Lady of Grace Catholic Church**  
SW Corner of Gunsnoke & Cow Path, Maricopa, AZ 85138  
Our Lady of Grace Roman Catholic Parish - Maricopa



Drawing Title  
**Phase 2 Site (Conceptual)**  
ALL DESIGNS AND DRAWINGS ARE © LITURGICAL ENVIRONS PC 2012  
Job Number:  
**2011-OLGM-03**  
Date:  
**14 May 2012**  
Drawing Number:  
**SPR.3**





NOTES:  
 a. Property owner shall properly maintain all landscape materials and landscape areas, including that within the private right-of-way adjacent to the development, in accordance with the approved landscape plan.  
 b. Replacement of dead trees within the site and on arterial, collectors and local streets shall be by the individual property owner and shall be completed within three (3) months from the date that the property owner is notified by the City.

PLANT MATERIAL LEGEND

KEY SYMBOL	BOTANICAL/COMMON NAME	SIZE	Quant/Quantity	QUANT.
<b>TREES</b>				
1	Salicaria alba	24" Box 10' x 4" 1.25'	21	21
2	Fraxinus v. W. Grandis	24" Box 10' x 4" 1.5'	27	27
3	Nerita glabra 'Water Angel'	24" Box 8' x 1.25'	4	4
4	Albizia julibrissin 'Sweet Pea'	24" Box 8' x 1.25'	4	4
5	Platanus sp.	15" Cal. 6" x 1.5'	10	10
6	Quercus virginiana	24" Box 10' x 4" 2'	12	12
7	Malus sp.	24" Box 8' x 1.25'	3	3
8	Washingtonia robusta	12-25' Tall See plan	0	0
9	Casuarina equisetifolia	48" Box 10' x 3" 3"	2	2
<b>SMALL PALMS</b>				
10	Chlorophytum complanatum	15 Gallon	1	1
<b>LARGE SHRUBS</b>				
11	Fraxinus viridis	5 Gallon	51	51
12	Leucophaea longistylis	5 Gallon	50	50
13	Nerita sp. Petite Pink	5 Gallon	25	25
14	Albizia julibrissin compacta	5 Gallon	28	28
<b>MEDIUM AND SMALL SHRUBS</b>				
15	Casuarina equisetifolia	5 Gallon	33	33
16	Callisander ulmifolia	5 Gallon	81	81
17	Malus sp. Dwarf	5 Gallon	28	28
18	Rubus sp.	5 Gallon	8	8
<b>GROUNDCOVERS</b>				
19	Lantana n. New Gold	1 Gallon	57	57
20	Rosa sp. Pratincola	5 Gallon	63	63
21	Woodsia glabella	1 Gallon	10	10
<b>ACCENTS</b>				
22	Bougainvillea	5 Gallon	3	3
23	Agave sp.	5 Gallon	6	6
24	Daylily	5 Gallon	8	8
<b>LANDSCAPE MATERIALS</b>				
25	Decomposed Granite	1/2" size screened		
26	Concrete Paver	4" x 8" Curbside		
27	Mulch	2" Deep		
28	Decomposed Granite Paver	1/2" size, 4" Deep		
29	Decomposed Granite Patch	1/2" size		
30	Decomposed Granite Patch	2" Deep		

NOTE: PHASE TWO LANDSCAPE DESIGN WILL BE DEVELOPED AND SUBMITTED FOR APPROVAL AT THE TIME OF THE SUBMISSION FOR THAT PHASE OF WORK.

PRELIMINARY LANDSCAPE PLAN  
 SCALE 30'-1"=0'



Liturgical Environments PC  
 8402 South 47th Place  
 Phoenix Arizona 85044  
 Office: 480.763.8787  
 Fax: 480.763.8787  
 Email: steve@liturgicalenvironments.com  
 Website: liturgicalenvironments.com

**SITE PLAN REVIEW for**  
**Our Lady of Grace Catholic Church**  
 SW Corner of Gunsmoke & Cow Path, Maricopa, AZ, 85138  
 Our Lady of Grace Roman Catholic Parish - Maricopa

Stamp

Drawing Title  
**Preliminary Landscape Plan**

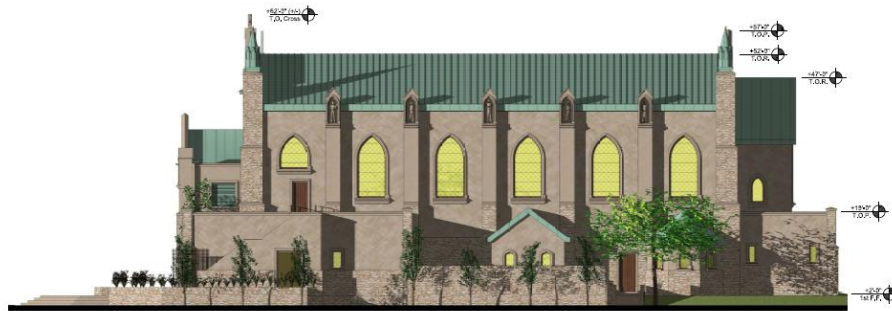
ALL LEGENDS AND DRAWINGS ARE LITURGICAL ENVIRONMENTS PC 2012

Job Number  
 2011-OLGM-03

Date  
 14 May 2012

Drawing Number  
**SPR.4**

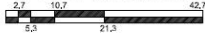




North Elevation



West Elevation



East Elevation



South Elevation



TYPICAL EXTERIOR MATERIALS:

Walls: Stucco/ EIFS painted or integral color (RGB = 200/180/160)

Walls: Manufactured Stone (Coronado "Italian Villa Coastal Brown" or slm.)

Pitched Roofs: Kynar type green copper finish batten seam profile; Sarnafil "Decor" profile Patina Green; or slm.

Coping, Window and Door Surrounds, etc: Integral color or painted precast concrete or GFRC; (RGB = 240/220/200).

Windows: Lt. Bronze Tint, low E, double glazed where clear. Stained glass art panels at church where appropriate.

Doors: Wood finished fiberglass or painted punched metal exterior doors (RGB = 120/80/60).



Liturgical Environments PC

7402 South 47th Place  
Phoenix Arizona 85044  
Office: 480 783 8787  
Fax: 480 783 8787  
Email: steve@liturgicalenvironments.com  
Website: liturgicalenvironments.com

SITE PLAN REVIEW for  
**Our Lady of Grace Catholic Church**  
SW Corner of Guns Smoke & Cow Path, Maricopa AZ, 85138  
Our Lady of Grace Roman Catholic Parish - Maricopa



Drawing Title

**Church Building**

ALL DESIGNS AND DRAWINGS ARE  
BY LITURGICAL ENVIRONMENTS PC 2013

10/18/2013  
2011-OLGM-03

Date  
14 May 2012

Drawing Number  
**SPR.8c**





Liturgical Environments PC  
 9422 South 47th Place  
 Phoenix Arizona 85044  
 Office: 480.783.8787  
 Fax: 480.783.8787  
 Email: steve@liturgicalenviro.com  
 Website: liturgicalenviro.com

**SITE PLAN REVIEW for**  
**Our Lady of Grace Catholic Church**  
 SW Corner of Gunsnoke & Cow Path, Maricopa, AZ, 85138  
 Our Lady of Grace Roman Catholic Parish - Maricopa



Drawing Title:  
**Admin. Building**  
 ALL DESIGNS AND DRAWINGS ARE  
 © LITURGICAL ENVIRONMENTS PC 2012

Job Number:  
**2011-OLGM-03**

Date:  
**14 May 2012**

Drawing Number:  
**SPR.9c**

**TYPICAL EXTERIOR MATERIALS:**

Walls: Stucco/ EIFS painted or Integral color (RGB = 200/180/160)

Walls: Manufactured Stone (Coronado "Italian Villa Coastal Brown" or sim.)

Pitched Roofs: Kynar type green copper finish batten seam profile; Sarnafil "Decor" profile Patina Green; or sim.

Coping, Window and Door Surrounds, etc: Integral color or painted precast concrete or GFRC; (RGB = 240/220/200).

Windows: Lt. Bronze Tint, low E, double glazed where clear. Stained glass art panels at church where appropriate.

Doors: Wood finished fiberglass or painted punched metal exterior doors (RGB = 120/80/60).



**East Elevation**



**North Elevation**

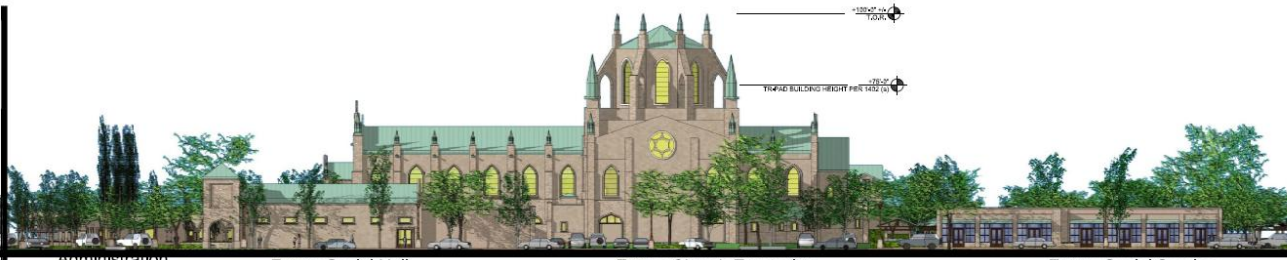


**West Elevation**



**South Elevation**

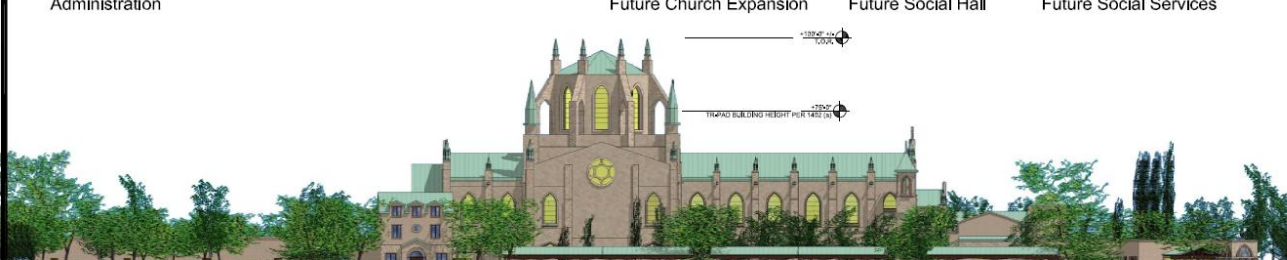




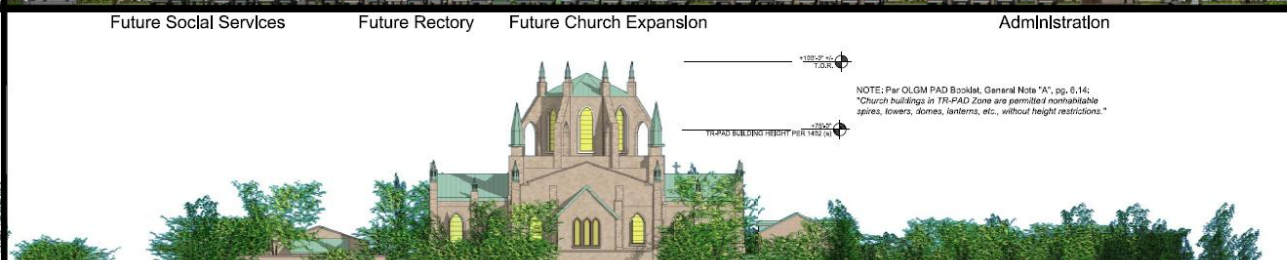
**North Elevation**  
 5.3 21.3 85.3  
 10.7 42.7  
 3/64" = 1' - 0"



**East Elevation**  
 5.3 21.3 85.3  
 10.7 42.7  
 3/64" = 1' - 0"



**South Elevation**  
 5.3 21.3 85.3  
 10.7 42.7  
 3/64" = 1' - 0"



**West Elevation**  
 5.3 21.3 85.3  
 10.7 42.7  
 3/64" = 1' - 0"



**Liturgical Environments PC**  
 3402 South 47th Place  
 Phoenix Arizona 85044  
 Office: 460.763.8787  
 Fax: 460.763.8787  
 Email: [scott@liturgicalenvironments.com](mailto:scott@liturgicalenvironments.com)  
 Website: [liturgicalenvironments.com](http://liturgicalenvironments.com)

**SITE PLAN REVIEW for**  
**Our Lady of Grace Catholic Church**  
 SW Corner of Guns Smoke & Cow Path, Maricopa AZ, 85138  
 Our Lady of Grace Roman Catholic Parish - Maricopa



Drawing Title  
**Phase 1 & Phase 2**  
 ALL DESIGNS AND DRAWINGS ARE  
 © LITURGICAL ENVIRONMENTS PC 2017  
 Job Number  
**2017-OLGM-03**  
 Date  
**14 May 2012**  
 Drawing Number  
**SPR.10c**

