



Economic and Community Development Update



Digital Content: Development Impact Fee Calculator

 Development Impact Fee Calculator

Development Impact Fee Calculator

Use this tool to estimate development impact fees

Follow the Steps Below

Follow the steps below to calculate an estimate of the development impact fees for your development project.

1

Determine if North or South

Use the map below to determine if your development project will be in the North or South fee area.

2

Residential Development

If your project is a residential development project, scroll down to the Residential Development Fee calculator.

3

Non-Residential Development

If your project is a non-residential development project, scroll down to the Non-Residential Development Fee calculator.

4

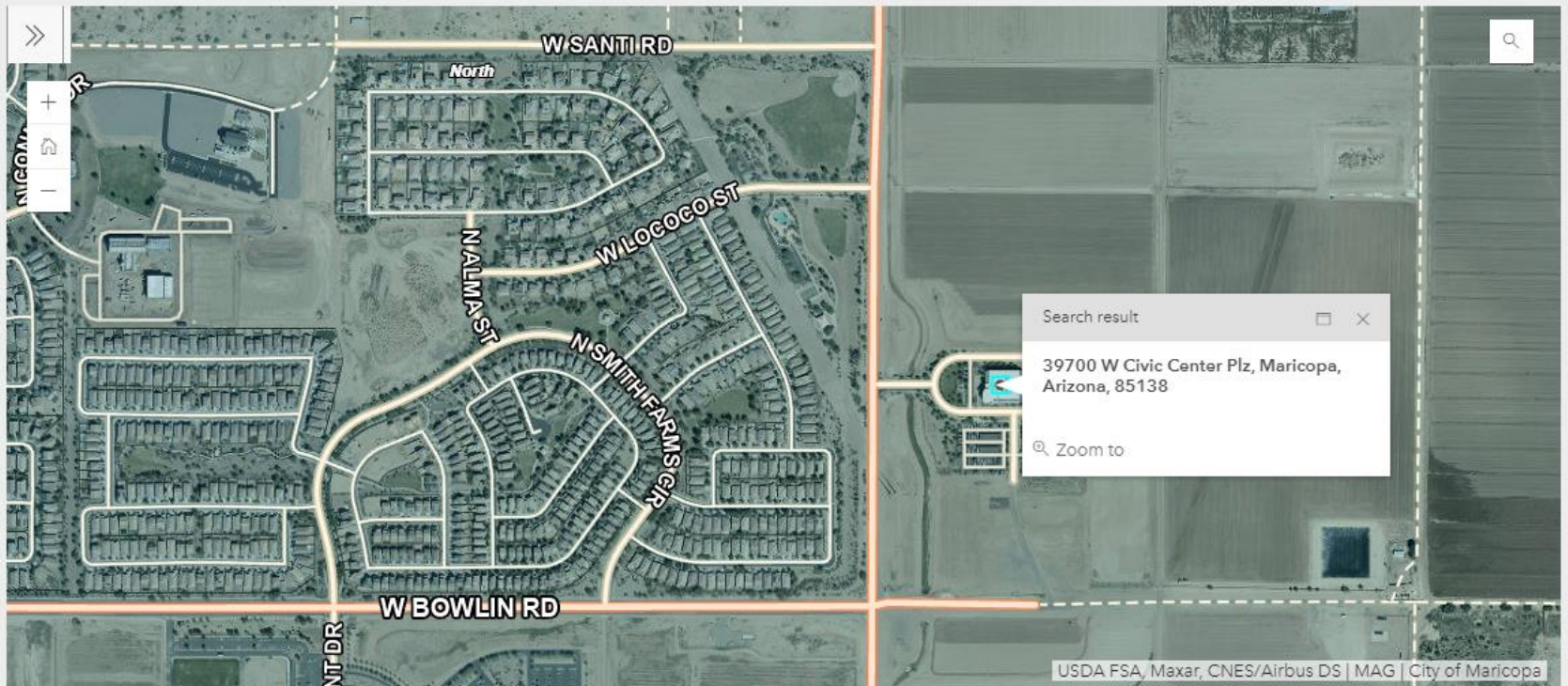
Enter All Required Fields

Enter all required fields in the Residential or Non-Residential Development Fee Calculator to view an estimate of development impact fees.

Digital Content: Development Impact Fee Calculator

North or South Fee Area

Use the map below to determine if your development project will be in the North or South fee area.



Digital Content: Development Impact Fee Calculator

North or South?*

North

Single family or multi-family?*

Single Family

Number of units?*

200

Parks and Recreation

(US Dollars)

241400

Libraries

(US Dollars)

26200

Police

(US Dollars)

99200

Fire

(US Dollars)

154800

Streets

(US Dollars)

595000

Total Estimated Development Fees

(US Dollars)

1094600

Estimate Residential Development Fees

To estimate residential development impact fees, enter North or South, Single or multi-family, and the number of units that will be built with this development project.

Fee calculations are based on the City of Maricopa Fee Schedule, Resolution 20-01, Effective February 2, 2020.

Estimates do not include fees from private utilities or modifications due to development agreements. Additional research is required.

Estimate Non-Residential Development Fees

To estimate non-residential development impact fees, enter North or South and the type of property that you plan to develop. Depending on the property type, you will either need to estimate square footage to the nearest 1,000 square feet, or estimate the number of rooms that will be built (for hotels or motels). Use the button below to view land use definitions to help determine property type.

Fee calculations are based on the City of Maricopa Fee Schedule, Resolution 20-01, Effective February 2, 2020.

Estimates do not include fees from private utilities or modifications due to development agreements. Additional research is required.

[View Definitions](#)

North or South?*

North

Non-residential property type?*

Business Park

Square footage?*

Estimate to nearest 1,000 square feet

95000

Parks and Recreation Development Fee

(U.S. Dollars)

16055

Libraries Development Fee

(U.S. Dollars)

1710

Police Development Fee

(U.S. Dollars)

57665

Fire Development Fee

(U.S. Dollars)

75535

Streets Development Fee

(U.S. Dollars)

181260

Total Estimated Development Fees

(U.S. Dollars)

332025

Digital Content: A Peek over the Fence

A Peek Over the Fence
PRESENTED BY CITY OF MARICOPA ECONOMIC & COMMUNITY DEVELOPMENT

MARICOPA IS BUILDING A BRIGHT FUTURE!
Contractors, developers, and small business owners have been utilizing our existing virtual services to ensure that their projects continue on schedule! Maricopa continues to ensure work gets done while still being responsible and following public health guidelines and instructions. Below is a recap of only some of the exciting single family residential projects happening around our city. Visit the [City of Maricopa, Arizona - Government Facebook page](#) for the latest in project updates.

GLENNWILDE
Glennwilde, in the center of Maricopa's current built environment, has surpassed 95% capacity. Homes in Glennwilde have been snapped up by residents that want to enjoy the community's heated pools, stocked fishing lake, and numerous other recreational opportunities. Being adjacent to The Wells commercial center, near John Wayne Parkway, and City Center means Glennwilde residents are never far from local goods or services. There are currently 1,864 built homes with 84 planned, for a total of 1,948.

SORRENTO
Sorrento is in the center of city limits, just south of the Rancho Mirage subdivision. Sorrento residents enjoy a slew of typical amenities like walking, jogging, biking trails and children's playgrounds, but there are also some unique water features and even a splash pad. Sorrento residents will have easy access to the new library that is currently being constructed at City Center, next to City Hall and the police station. There are currently 764 built homes with 57 planned, for a total of 821 in phase one.

MADISON POINTE
Madison Pointe is a new retail center near John Wayne Parkway. It will include the Edison Place Towne Plaza apartments, Madison Pointe, and our stream of special projects to meet the needs of Maricopans. Our PAD sites, the two developments below are just half of what will be coming to Madison Pointe.

JOHN WAYNE PARKWAY SELF STORAGE FACILITY
John Wayne Parkway Self-Storage will be the second finished piece of the four-site Madison Pointe retail center. Boasting 135,000 sq ft of space with abundant landscaping, this project is the largest piece of Madison Pointe by square footage.

WWW.WHATSNEWMARICOPA.COM

VOL IX - JUNE 18, 2020

VOL VII - JUNE 4, 2020












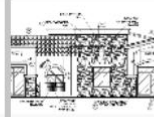







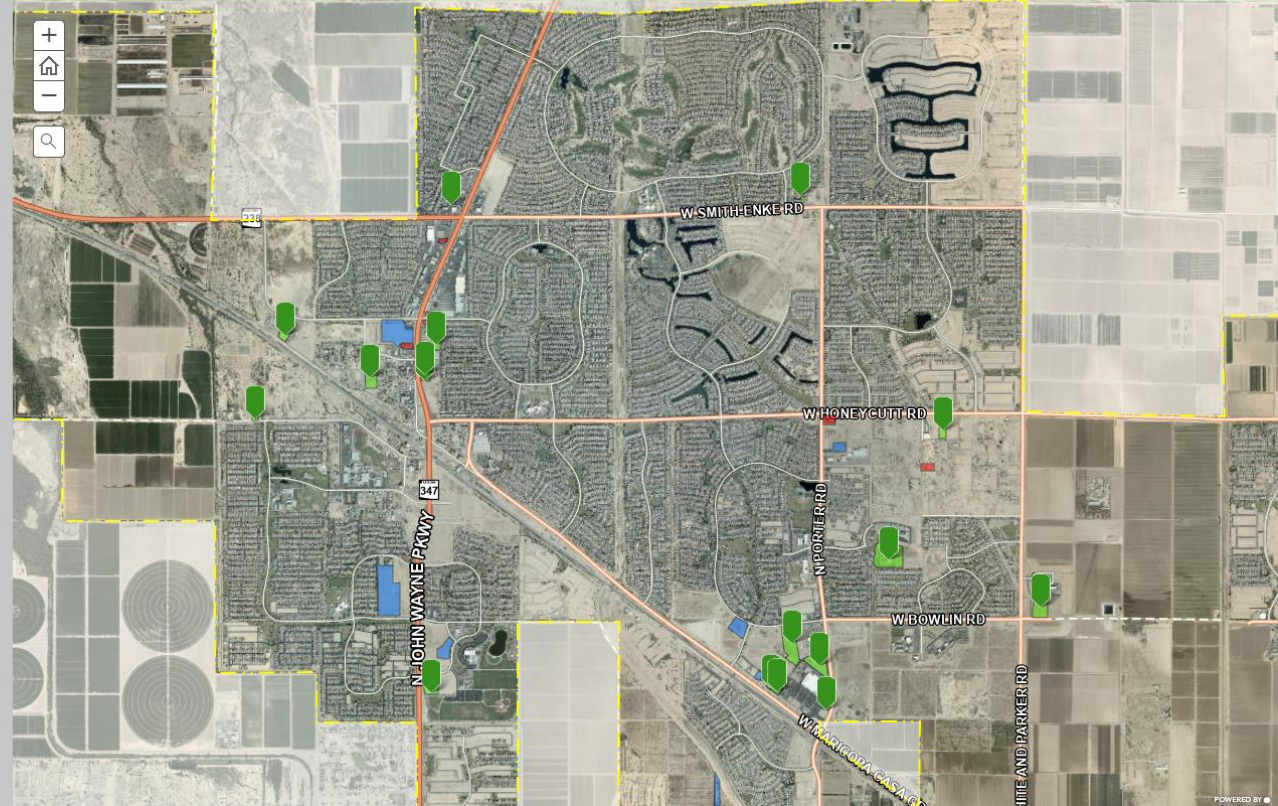
Digital Content: What's new Maricopa?

What's New Maricopa?

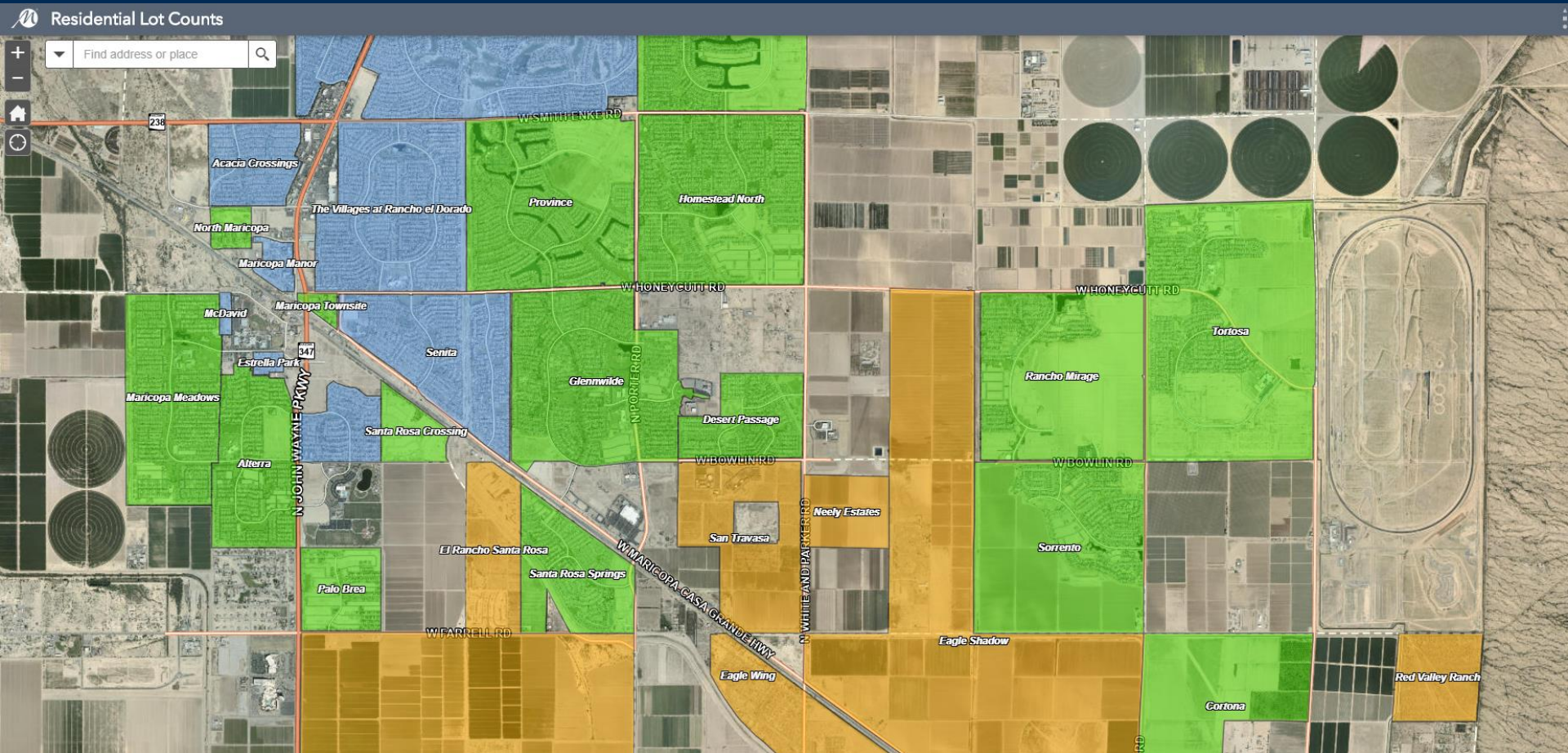


- Planning and Zoning
- Under Construction
- Recently Completed

 <p>A+ Plus Charter School</p>	 <p>ASUI Medical Office</p>	 <p>Bahama Bucks</p>	 <p>City of Maricopa Fire/Medical Administration</p>
 <p>City of Maricopa Public Library</p>	 <p>Heritage Academy</p>	 <p>Hope Women's Center</p>	 <p>Iconic Tires</p>
 <p>Jehovah Witness Kingdom Hall</p>	 <p>John Wayne Parkway Self Storage</p>	 <p>La Quinta Hotel</p>	 <p>New Offices</p>
 <p>Oasis at The Wells</p>	 <p>Pinal County Complex</p>	 <p>Retail Shops / Maricopa Kids' Dentists</p>	 <p>Shell Building / Ritiberto's Fresh Mexican Food</p>
 <p>Walgreens</p>			



Digital Content: Residential Lot Counts



SR 347 / John Wayne Parkway Beautification



SR-347 John Wayne Parkway
View 1 Looking South, just past the entry monument



John Wayne Parkway and Edison Road - Looking East



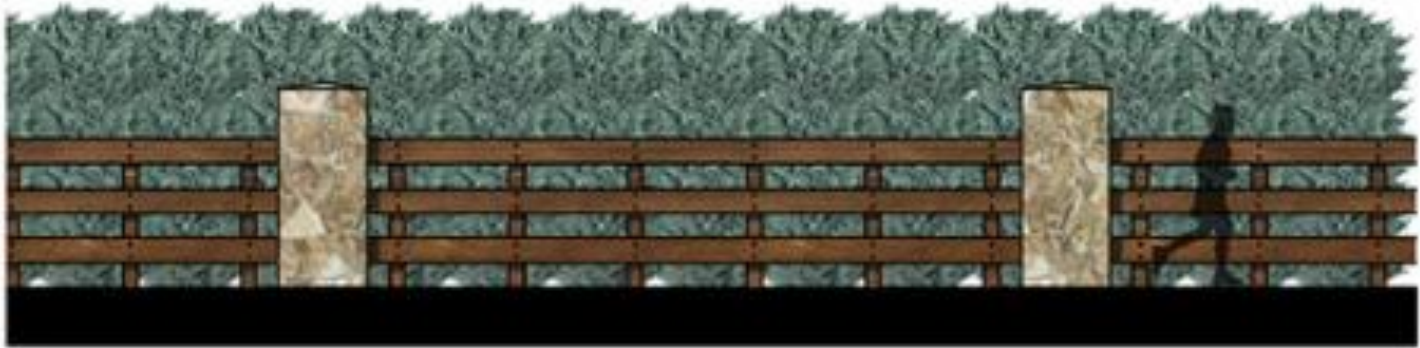
Heritage District: Solar Lights



Heritage District: Main Street



Heritage District: Fences



TYPE-B
WOOD WITH HEDGE | SCREEN WALL

Thank You

