



BUILDING TYPE I, SCHEME A



BUILDING TYPE I, SCHEME B



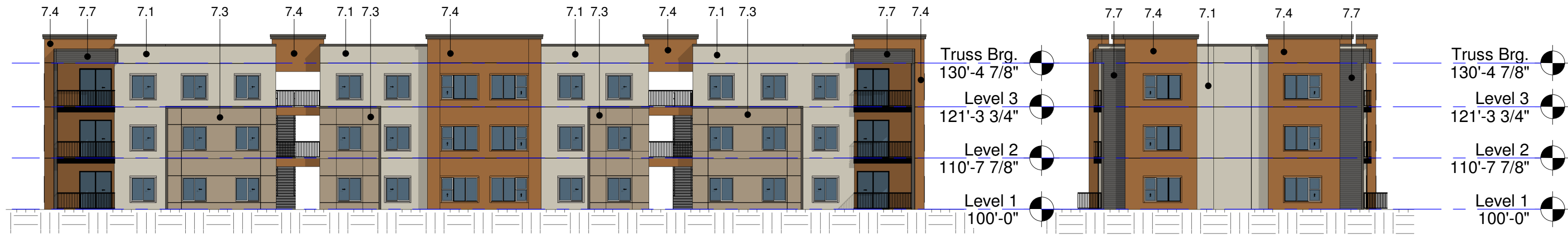
BUILDING TYPE II



CLUBHOUSE

EXTERIOR MATERIALS

Material Mark	Description	Image
7.1	Stucco - Painted - Biege	
7.2	Stucco - Painted - Dark Gray	
7.3	Stucco - Painted - Tan	
7.4	Stucco - Painted - Rust	
7.7	Fiber Cement Lap Siding - Dark Gray	



1 Exterior Elevation - Front
1" = 20'-0"

2 Exterior Elevation - Left
1" = 20'-0"



3 Exterior Elevation - Back
1" = 20'-0"

4 Exterior Elevation - Right
1" = 20'-0"

EXTERIOR MATERIALS

Material Mark	Description	Image
7.1	Stucco - Painted - Biege	
7.2	Stucco - Painted - Dark Gray	
7.3	Stucco - Painted - Tan	
7.5	Stucco - Painted - Green	
7.7	Fiber Cement Lap Siding - Dark Gray	



1 Exterior Elevation - Front
1" = 20'-0"

2 Exterior Elevation - Left
1" = 20'-0"



3 Exterior Elevation - Back
1" = 20'-0"

4 Exterior Elevation - Right
1" = 20'-0"



1 Exterior Elevation - Front
1" = 20'-0"



3 Exterior Elevation - Back
1" = 20'-0"

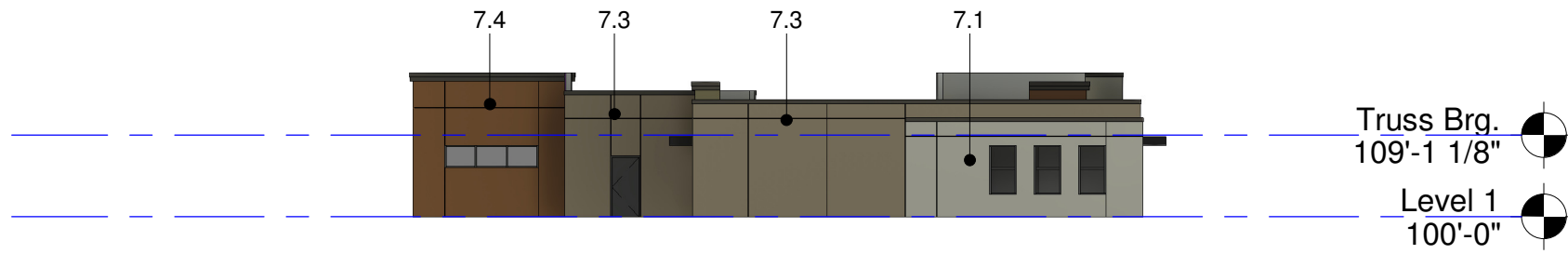


4 Exterior Elevation - Right
1" = 20'-0"



2 Exterior Elevation - Left
1" = 20'-0"

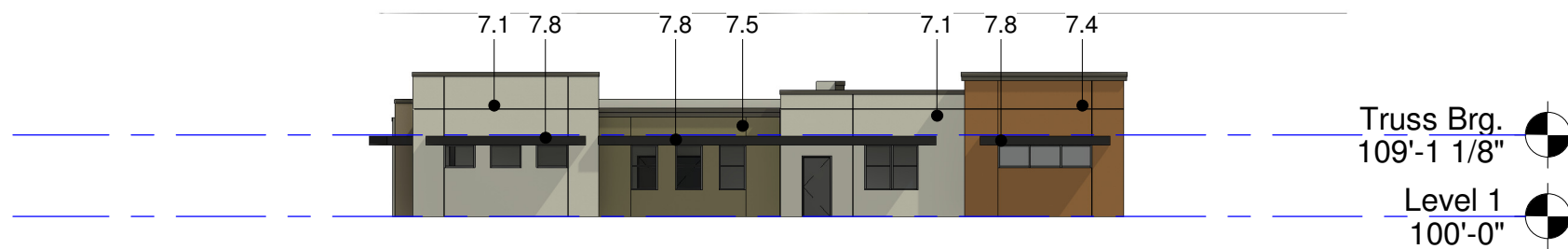
EXTERIOR MATERIALS		
Material Mark	Description	Image
7.1	Stucco - Painted - Biege	
7.2	Stucco - Painted - Dark Gray	
7.3	Stucco - Painted - Tan	
7.4	Stucco - Painted - Rust	
7.5	Stucco - Painted - Green	
7.7	Fiber Cement Lap Siding - Dark Gray	



① Exterior Elevation - North
1" = 20'-0"



② Exterior Elevation - East
1" = 20'-0"



③ Exterior Elevation - South
1" = 20'-0"



④ Exterior (Front) Elevation - West
1" = 20'-0"

EXTERIOR MATERIALS		
Material Mark	Description	Image
7.1	Stucco - Painted - Biege	
7.3	Stucco - Painted - Tan	
7.4	Stucco - Painted - Gold	
7.5	Stucco - Painted - Green	
7.8	Metal Sun Shade - Painted - Dark Grey	