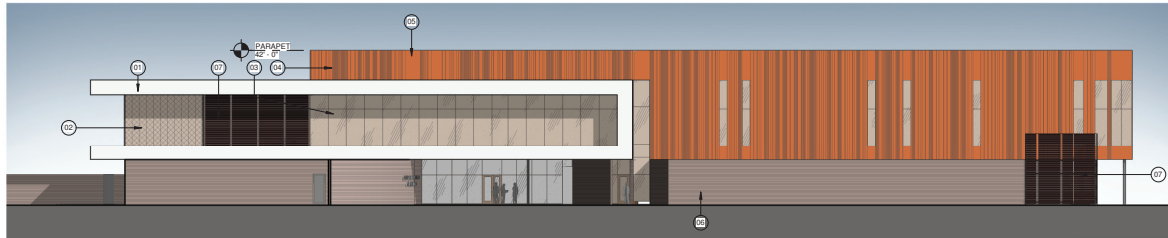




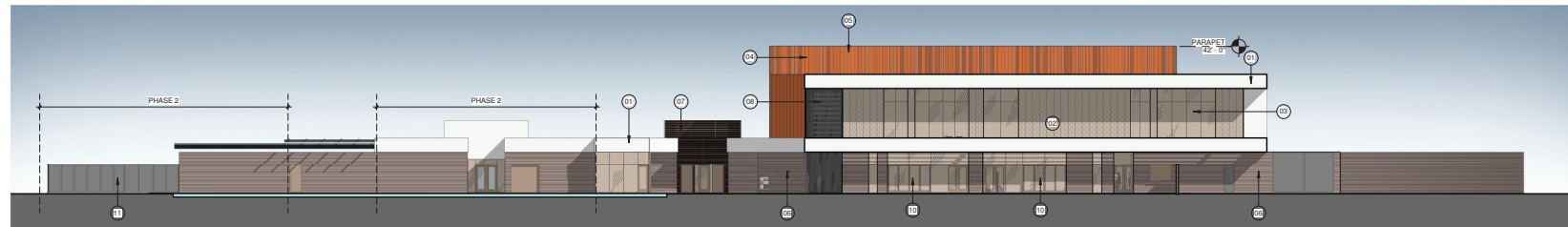
4 PRESENTATION ELEVATION_WEST
1/16" = 1'-0"



3 PRESENTATION ELEVATION_SOUTH
1/16" = 1'-0"



2 PRESENTATION ELEVATION_NORTH
1/16" = 1'-0"



1 PRESENTATION ELEVATION_EAST
1/16" = 1'-0"

- SHEET NOTES_ELEVATION**
- 01 WATER MANAGED EIFS SYSTEM ON 5/8" EXTERIOR GYP BD SHEATHING ON 6" METAL STUDS @ 16" O.C.
 - 02 TRIPLE CLIP POLYCARBONATE ON METAL STUDS
 - 03 ALUMINUM WINDOW SYSTEM, ANODIZED MEDIUM BRONZE FRAME
 - 04 METAL WALL PANEL, RISSED
 - 05 METAL WALL PANEL, SMOOTH
 - 06 PATTERN OF 4" & 8" TALL TRENDSTONE GROUND FACE CMU
 - 07 RAILROAD TIES RIPPED, PLANED, & SEALED
 - 08 2" PURLINS
 - 10 SLIDING GLASS DOORS
 - 11 POOL FENCE
 - 13 ILLUMINATED BUILDING SIGNAGE
 - 14 STEEL STAIR WITH CONCRETE PAN TREADS & STEEL RAIL