



① NORTH ELEVATION

SCALE: 3/16" = 1'-0"



② EAST ELEVATION

SCALE: 3/16" = 1'-0"

GENERAL NOTES

1. ALL ROOF-MOUNTED EQUIPMENT/AC UNITS SHALL BE SCREENED BY PARAPET
2. ALL ROOF DRAINS/DOWNSPOUTS SHALL BE INTERNALIZED

KEYNOTES

- 1 HOLLOW METAL DOOR AND FRAME
- 2 ALUMINUM ENTRY DOORS. DARK BRONZE FINISH
- 3 LIGHT FIXTURE
- 4 ALUMINUM STOREFRONT WITH INSULATED GLAZING. SOLARBAN 90 SOLARBRONZE. DARK BRONZE FINISH
- 5 SIGNAGE UNDER SEPARATE PERMIT
- 6 ROOF LINE (DASHED)
- 7 MECHANICAL UNIT (DASHED) FULLY SCREENED
- 8 PARAPET BEYOND
- 9 ELECTRICAL SERVICE ENTRY SECTION (RECESSED AND PAINTED PT1)
- 10 ALUMINUM STOREFRONT WITH INSULATED GLAZING SPANDREL PANEL. SOLARBAN 90 SOLARBRONZE

COLOR AND MATERIALS

- ST1** 7/8" STUCCO FINISH ON SELF FURRING GALV. METAL LATCH WITH FRY REGLET CORNERS, MOLDING AND TRIM.
COLOR: BENJAMIN MOORE SAIL CLOTH BMOC-142
FINISH: SAND FINISH
- WS** WOOD SIDING (ALLURA CEMENT FIBERBOARD)
8" LAP SIDING, TEXTURED
COLOR: ARMORSHHELL, MAPLE T.S.
MANUF: NORTHWEST
- MT** METAL ROOFING STANDING SEAM
COLOR: MEDIUM BRONZE
MANUF: BERRIDGE OR EQUAL
- PT1** PAINT
COLOR: SAIL CLOTH BMOC-142
FINISH: SATIN
MANUF: BENJAMIN MOORE
- PT2** PAINT
COLOR: BLACK FOX SW 7020
FINISH: SATIN
MANUF: SHERWIN WILLIAMS
- SV** STONE VENEER
TYPE: CUT COARSE STONE
COLOR: SEASHELL
MANUF: EL DORADO STONE
- WT** PORCELAIN WALL TILE
TYPE: PORCELAIN 12" X 24" AMBASSADOR
COLOR: GLOBAL GREY AM35 MATTE WITH MAPEI GROUT 112 MEDIUM GREY
MANUF: DALTILE



ARCHICON
Architecture & Interiors, L.C.

5055 E WASHINGTON STREET
SUITE 200
PHOENIX, ARIZONA 85034
(602) 222-4266
FAX (602) 279-4305
WWW.ARCHICON.COM

TERRIBLE'S C-STORE
41595 W HONEYCUTT RD
SWC W HONEYCUTT RD & N. PORTER RD
MARICOPA, AZ 85138

PROJECT NUMBER: 2428110-10
PROJECT MANAGER: JK
DRAWN BY: JK
CHECKED BY: JK

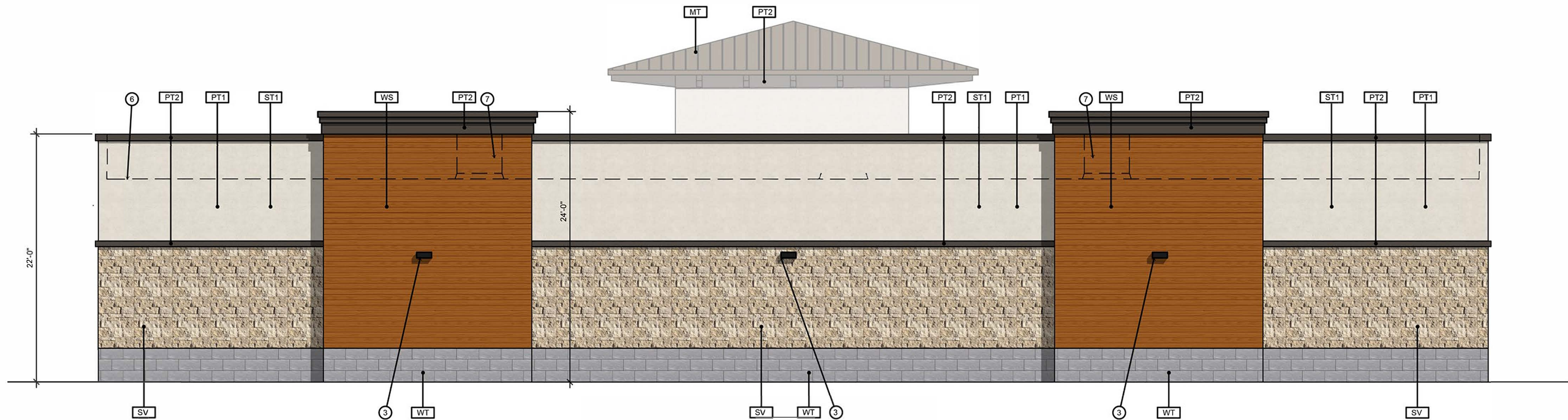
SHEET DESCRIPTION
EXTERIOR ELEVATIONS

SHEET NO.

DR-03

ISSUE DATE: 4 APR 2025

PRELIMINARY
DRAWING



① SOUTH ELEVATION

SCALE: 3/16" = 1'-0"



② WEST ELEVATION

SCALE: 3/16" = 1'-0"

GENERAL NOTES

1. ALL ROOF-MOUNTED EQUIPMENT/AC UNITS SHALL BE SCREENED BY PARAPET
2. ALL ROOF DRAINS/DOWNSPOUTS SHALL BE INTERNALIZED

KEYNOTES

- 1 HOLLOW METAL DOOR AND FRAME
- 2 ALUMINUM ENTRY DOORS. DARK BRONZE FINISH
- 3 LIGHT FIXTURE
- 4 ALUMINUM STOREFRONT WITH INSULATED GLAZING. SOLARBAN 90 SOLARBRONZE. DARK BRONZE FINISH
- 5 SIGNAGE UNDER SEPARATE PERMIT
- 6 ROOF LINE (DASHED)
- 7 MECHANICAL UNIT (DASHED) FULLY SCREENED
- 8 PARAPET BEYOND
- 9 ELECTRICAL SERVICE ENTRY SECTION (RECESSED AND PAINTED PT1)
- 10 ALUMINUM STOREFRONT WITH INSULATED GLAZING SPANDREL PANEL. SOLARBAN 90 SOLARBRONZE

COLOR AND MATERIALS

- ST1 7/8" STUCCO FINISH ON SELF FURRING GALV. METAL LATCH WITH FRY REGLET CORNERS, MOLDING AND TRIM.
COLOR: BENJAMIN MOORE SAIL CLOTH BMOC-142
FINISH: SAND FINISH
- WS WOOD SIDING (ALLURA CEMENT FIBERBOARD) 8" LAP SIDING, TEXTURED
COLOR: ARMORSHHELL, MAPLE T.S.
MANUF: NORTHWEST
- MT METAL ROOFING STANDING SEAM
COLOR: MEDIUM BRONZE
MANUF: BERRIDGE OR EQUAL
- PT1 PAINT
COLOR: SAIL CLOTH BMOC-142
FINISH: SATIN
MANUF: BENJAMIN MOORE
- PT2 PAINT
COLOR: BLACK FOX SW 7020
FINISH: SATIN
MANUF: SHERWIN WILLIAMS
- SV STONE VENEER
TYPE: CUT COARSE STONE
COLOR: SEASHELL
MANUF: EL DORADO STONE
- WT PORCELAIN WALL TILE
TYPE: PORCELAIN 12" X 24" AMBASSADOR
COLOR: GLOBAL GREY AM35 MATTE WITH MAPEI GROUT 112 MEDIUM GREY
MANUF: DALTILE



ARCHICON

Architecture & Interiors, L.C.

5055 E WASHINGTON STREET
SUITE 200
PHOENIX, ARIZONA 85034
(602) 222-4266
FAX (602) 279-4305
www.ARCHICON.COM

TERRIBLE'S C-STORE
41595 W HONEYCUTT RD
SWC W HONEYCUTT RD & N. PORTER RD
MARICOPA, AZ 85138

PROJECT NUMBER: 2428110-10
PROJECT MANAGER: JK
DRAWN BY: JK
CHECKED BY: JK

SHEET DESCRIPTION
EXTERIOR ELEVATIONS

SHEET NO.

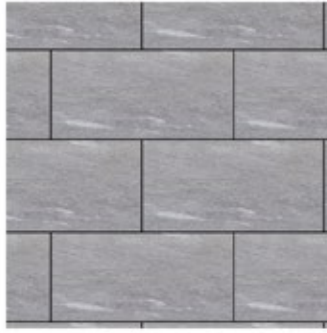
DR-04

ISSUE DATE: 4 APR 2025

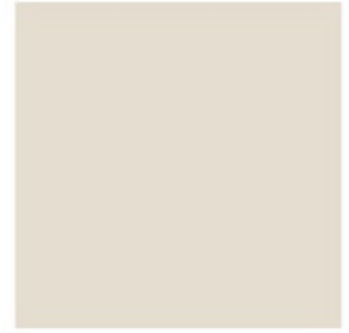
PRELIMINARY
DRAWING



ST - STUCCO FINISH
COLOR: SAIL CLOTH BMOC-142
FINISH: SAND FINISH
MANUF: BENJAMIN MOORE



WT - PORCELAIN WALL TILE
TYPE: PORCELAIN 12" X 24" AMBASSADOR
COLOR: GLOBAL GREY AM35 MATTE
W/ MAPEI GROUT 112 MEDIUM GREY
MANUF: DALTILE



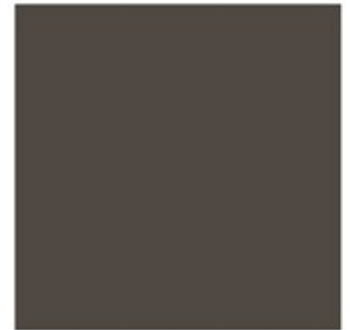
PT1 - PAINT
COLOR: SAIL CLOTH BMOC-142
FINISH: SATIN
MANUF: BENJAMIN MOORE



WS - WOOD SIDING
COLOR: ARMORSELL, MAPLE T.S.
MANUF: NORTHWEST



MT - METAL ROOFING STANDING SEAM
COLOR: MEDIUM BRONZE
MANUF: BERRIDGE OR EQUAL



PT2 - PAINT
COLOR: SW 7020 BLACK FOX
FINISH: FLAT
MANUF: SHERWIN WILLIAMS



SV - STONE VENEER
TYPE: STACKED STONE CUT COURSE
COLOR: SEASHELL
MANUF: EL DORADO STONE



GL - GLAZING
TYPE: GL1 - VITRO SOLARBAN 90 (2)
CLEAR + CLEAR 1" INSULATING
GLASS UNIT, 51% VLT, 12%EXT. REFL.,
19% INT. REFL., 0.24 U-VALUE (ARGON),
0.23 SHGS, 2.22 LSG
GL2 - VITRO SPANDREL GLASS
MANUF: VITRO ARCHITECTURAL GLASS



SF - STOREFRONT
TYPE: ALUMINUM AFG451T
MEDIUM STILE
COLOR: MEDIUM BRONZE
MANUF: ARCADIA

TERRIBLE'S
 COLOR BOARD



5055 E. Washington St., Ste. 200
 Phoenix, Arizona 85034
 Phone: (602) 222-4266
www.archicon.com
ARCHICON
 Architecture & Interiors, L.C.