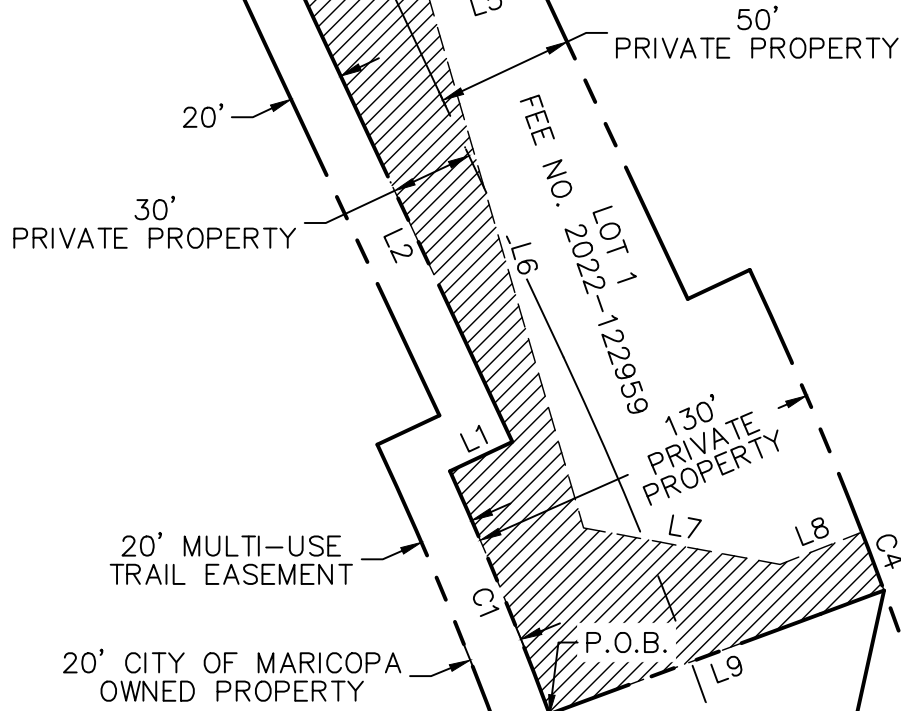



**LOT 2 FEE NO.
2022-122959
P.C.R.**



**CONTAINS 20,760 SQUARE FEET
OR 0.477 ACRES, MORE OR LESS.**

LEGEND

P.O.B. POINT OF BEGINNING
P.C.R. PINAL COUNTY RECORDER
R/W RIGHT OF WAY
 PUBLIC UTILITY EASEMENT
POST ABANDONMENT

**N. JOHN WAYNE PKWY.
(SR 347)**



RICK

**2401 W PEORIA AVE, SUITE 130
PHOENIX, AZ 85029
602-957-3350
rickengineering.com**

EXHIBIT 2 PUBLIC UTILITY EASEMENT MARICOPA, ARIZONA

DRAWING:	7373_First_Baptist_PUE			
JOB#	7373	SCALE:	NTS	SHT: 1 OF 2
DRAFTER:	CRS	CHK:	MAB	DATE: 07/02/25

LINE TABLE		
LINE	DIRECTION	LENGTH
L1	N64°51'48"E	25.15'
L2	N25°08'12"W	169.85'
L3	N75°42'40"E	80.54'
L4	S25°08'11"E	16.52'
L5	S73°01'25"W	39.29'
L6	S16°16'44"E	200.74'
L7	S79°28'33"E	72.86'
L8	N68°31'45"E	32.09'
L9	S69°43'42"W	130.00'

CURVE TABLE				
CURVE	DELTA	RADIUS	LENGTH	CHORD
C1	3°58'47"	1378.07'	95.72'	N22°18'50"W 95.70'
C2	4°23'21"	1462.39'	112.03'	N22°56'31"W 112.00'
C3	4°00'50"	1382.39'	96.84'	S23°07'46"E 96.82'
C4	0°51'48"	1507.39'	22.71'	S20°45'00"E 22.71'



2401 W PEORIA AVE, SUITE 130
PHOENIX, AZ 85029
602-957-3350
rickengineering.com

EXHIBIT "B"

PUBLIC UTILITY EASEMENT
MARICOPA, ARIZONA

DRAWING:	7373_First_Baptist_PUE			
JOB#	7373	SCALE:	NTS	SHT: 2 OF 2
DRAFTER:	CRS	CHK:	MAB	DATE: 07/02/25

EXHIBIT 1

Amended Easement Area

See attached

EXHIBIT 1

**LEGAL DESCRIPTION
PUBLIC UTILITY EASEMENT
FIRST BAPTIST CHURCH
MARICOPA, ARIZONA**

July 2, 2025
Job No. 7373
Page 1 of 1

AN EASEMENT WITHIN A PORTION OF LOT 1 OF RECORD OF SURVEY "MINOR LAND DIVISION", RECORDED AS FEE NO. 2022-122959, PINAL COUNTY RECORDS, LOCATED WITHIN THE SOUTHEAST QUARTER OF SECTION 28, TOWNSHIP 4 SOUTH, RANGE 3 EAST, OF THE GILA AND SALT RIVER MERIDIAN, PINAL COUNTY, ARIZONA, BEING MORE PARTICULARLY DESCRIBED AS FOLLOWS:

BEGINNING AT THE SOUTHWEST CORNER OF LOT 1 OF SAID RECORD OF SURVEY, BEING THE START OF A CURVE CONCAVE WEST, WHOSE RADIUS POINT BEARS SOUTH 69°40'33" WEST, A RADIAL DISTANCE OF 1,378.07 FEET;

THENCE NORTHERLY ALONG THE ARC OF SAID CURVE, THROUGH A CENTRAL ANGLE OF 03°58'47", A DISTANCE OF 95.72 FEET, TO A NON-TANGENT LINE;

THENCE NORTH 64°51'48" EAST, A DISTANCE OF 25.15 FEET;

THENCE NORTH 25°08'12" WEST, A DISTANCE OF 169.84 FEET, TO A TANGENT CURVE CONCAVE NORTHEAST, HAVING A RADIUS OF 1,462.39 FEET;

THENCE NORTHWESTERLY ALONG THE ARC OF SAID CURVE, THROUGH A CENTRAL ANGLE OF 04°23'21", A DISTANCE OF 112.03 FEET, TO A NON-TANGENT LINE;

THENCE NORTH 75°42'40" EAST, A DISTANCE OF 80.54 FEET, TO A NON-TANGENT CURVE CONCAVE NORTHEAST, WHOSE RADIUS POINT BEARS NORTH 68°52'39" EAST, A RADIAL DISTANCE OF 1,382.39 FEET;

THENCE SOUTHEASTERLY ALONG THE ARC OF SAID CURVE, THROUGH A CENTRAL ANGLE OF 04°00'50", A DISTANCE OF 96.84 FEET;

THENCE SOUTH 25°08'11" EAST, A DISTANCE OF 16.52 FEET;

THENCE SOUTH 73°01'25" WEST, A DISTANCE OF 39.29 FEET;

THENCE SOUTH 16°16'44" EAST, A DISTANCE OF 200.74 FEET;

THENCE SOUTH 79°28'33" EAST, A DISTANCE OF 72.86 FEET;

THENCE NORTH 68°31'45" EAST, A DISTANCE OF 32.09 FEET, TO A NON-TANGENT CURVE CONCAVE WEST, WHOSE RADIUS POINT BEARS SOUTH 68°49'06" WEST, A RADIAL DISTANCE OF 1,507.39 FEET;

THENCE SOUTHERLY ALONG THE ARC OF SAID CURVE, THROUGH A CENTRAL ANGLE OF 00°51'48", A DISTANCE OF 22.71 FEET, TO A NON-TANGENT LINE;

THENCE SOUTH 69°43'42" WEST, A DISTANCE OF 130.00 FEET, TO THE **POINT OF BEGINNING**.

CONTAINS 20,760 SQUARE FEET OR
0.477 ACRES, MORE OR LESS.

