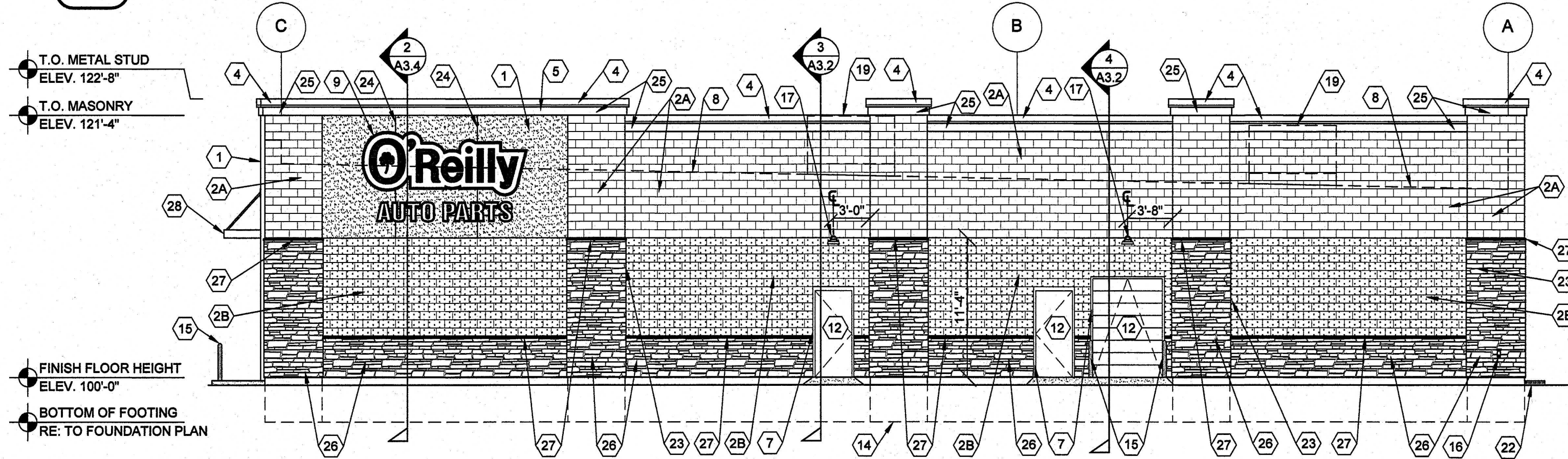


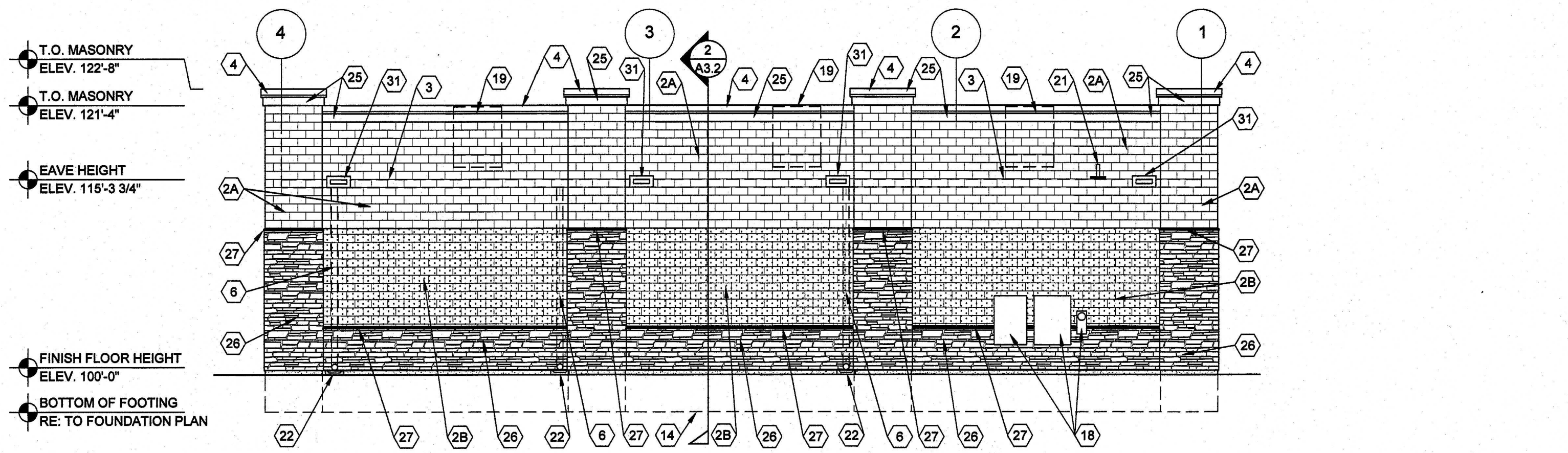
1 EAST EXTERIOR ELEVATION

A2.1 SCALE: 1/8" = 1'-0"



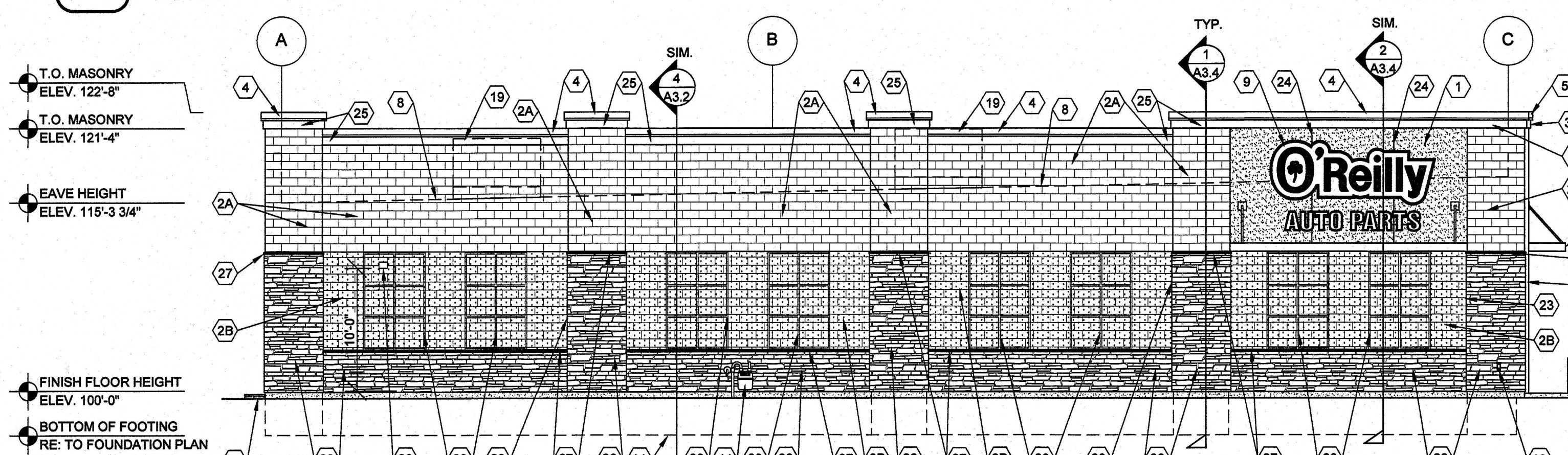
2 NORTH EXTERIOR ELEVATION

A2.1 SCALE: 1/8" = 1'-0"



3 WEST EXTERIOR ELEVATION

A2.1 SCALE: 1/8" = 1'-0"



4 SOUTH EXTERIOR ELEVATION

A2.1

ARCHITECTURAL FEATURES HAVE BEEN REVISED ON ALL ELEVATIONS.
NOTE: SIGNAGE SHALL FALL UNDER A SEPARATE PERMIT.

CONCRETE MASONRY UNIT SPECIAL SCHEDULE OF TREATMENTS

- GENERAL**
- REFER TO PROJECT MANUAL FOR ADDITIONAL REQUIREMENTS.
 - MANUFACTURER: SHERWIN WILLIAMS SPECIFIED. EQUAL PRODUCTS BY PPG INDUSTRIES ACCEPTABLE (NO SUBSTITUTES).
 - APPLICATION: INSTALL PER MANUFACTURER'S RECOMMENDATIONS FOR PROJECT CONDITIONS. EACH COAT SPECIFIED SHALL BE SPRAY APPLIED AND BACK ROLLED. COVERAGE THICKNESS INDICATED IN WET MIL UNITS, UNLESS OTHERWISE INDICATED.
 - QUALITY CONTROL: SUBMIT INSTALLER AND MANUFACTURER WARRANTIES SPECIFIED.
- CONCRETE MASONRY UNIT (CMU) EXTERIOR FINISH COATINGS:**
- FINISH COLORS: (REFER TO EXTERIOR FINISH SCHEDULE).
 - PRIMER: "LOXON" ACRYLIC BLOCK SURFACER "LX01W0200-LXN BLOCK SURF WH" (NO LESS THAN 16 MILS). TWO COATS MAY BE REQUIRED TO ACHIEVE PINHOLE FREE SURFACE. (REFER TO EXTERIOR FINISH SCHEDULE).
 - COAT 1: "LOXON" SELF-CLEANING ACRYLIC COATING "LX13W0051-LXN SELF-CLEAN EW" (NO LESS THAN 6 MILS). (REFER TO EXTERIOR FINISH SCHEDULE).
 - COAT 2: "LOXON" SELF-CLEANING ACRYLIC COATING "LX13W0051-LXN SELF-CLEAN EW" (NO LESS THAN 6 MILS). (REFER TO EXTERIOR FINISH SCHEDULE).
- CONCRETE MASONRY UNIT (CMU) INTERIOR SURFACE COATINGS:**
- APPLY PRIOR TO INSTALLATION OF INTERIOR SURFACE FURRING, INSULATION, AND GYPSUM BOARD ASSEMBLIES.
 - FINISH COLOR: MATCH "W-2" (REFER TO INTERIOR FINISH TYPES).
 - PRIMER: "LOXON" WATER BLOCKING PRIMER "LX12W0050-LXN WTR BLCK PR WH" (NO LESS THAN 6 MILS). APPLICATION WITH OVERNIGHT DRYING BETWEEN COAT 1. MATCH "W-2" (REFER TO INTERIOR FINISH TYPES).
 - COAT 1: "LOXON" WATER BLOCKING PRIMER "LX12W0050-LXN WTR BLCK PR WH" (NO LESS THAN 6 MILS). MATCH "W-2" (REFER TO INTERIOR FINISH TYPES).

EXTERIOR FINISH SCHEDULE

EXTERIOR INSULATION AND FINISH SYSTEM (EIFS)
KEY NOTE NO. 1 & 10:
MFG: DRYVIT SPECIFIED. EQUAL BY STO OR BASF (NO SUBSTITUTES)
SERIES: OUTSULATION PLUS MD
TEXTURE: SANDBLAST
COLOR: DRYVIT "ORAP011030S" STRATOTONE HIGH PERFORMANCE
COLOR STANDARD: SHERWIN WILLIAMS "POSITIVE RED" SW6871 (SHER-CRYL) GLOSS

KEY NOTE NO. 28:
MFG: DRYVIT SPECIFIED. EQUAL BY STO OR BASF (NO SUBSTITUTES)
SERIES: OUTSULATION PLUS MD
TEXTURE: SANDBLAST
COLOR STANDARD: SHERWIN WILLIAMS "SOFTER TAN" SW6141 (SHER-CRYL) GLOSS

UNIT MASONRY
KEY NOTE NO. 2A:
TYPE: CONCRETE MASONRY UNIT (CMU)
MFG: (REFER TO PROJECT MANUAL)
SIZE: 8"x8"x16" (NOM.)
TEXTURE: SMOOTH FACE
COURSING: RUNNING BOND
FINISH: FIELD PAINT (ACCENT COLOR)
COLOR: SHERWIN WILLIAMS "SOFTER TAN" SW6141 (SEMI-GLOSS)
COATS:
(1) COAT SW "PREPRITE" BLOCK FILLER B25W25 (NO LESS THAN 8 MILS) AND (2) COATS SW "CONFLX XL" SMOOTH ELASTOMERIC A6-400 (NO LESS THAN 5.7 MILS EACH COAT) (1) COAT SW "SHER-CRYL HPA SEMI-GLOSS" (NO LESS THAN 4 MILS).

COATS (COLD WEATHER APPLICATIONS):
(1) COAT SW "LOXON BLOCK SURFACER" (NO LESS THAN 8 MILS) AND (2) COATS SW "ULTRACRETE" SOLVENT BORNE SMOOTH B46 (NO LESS THAN 8 MILS EACH COAT OR 16 MILS TOTAL)

KEY NOTE NO. 2B:
TYPE: CONCRETE MASONRY UNIT (CMU)
MFG: (REFER TO PROJECT MANUAL)
SIZE: 8"x8"x16" (NOM.)
TEXTURE: SPLIT FACE
COURSING: RUNNING BOND
FINISH: FIELD PAINT (FIELD COLOR)
COLOR: SHERWIN WILLIAMS "LATTE" SW6108 (SEMI-GLOSS)
COATS:
(1) COAT SW "PREPRITE" BLOCK FILLER B25W25 (NO LESS THAN 8 MILS) AND (2) COATS SW "CONFLX XL" SMOOTH ELASTOMERIC A6-400 (NO LESS THAN 5.7 MILS EACH COAT)

COATS (COLD WEATHER APPLICATIONS):
(1) COAT SW "LOXON BLOCK SURFACER" (NO LESS THAN 8 MILS) AND (2) COATS SW "ULTRACRETE" SOLVENT BORNE SMOOTH B46 (NO LESS THAN 8 MILS EACH COAT OR 16 MILS TOTAL)

FLASHING AND SHEET METAL
KEY NOTE NO. 3:
TYPE: STANDING SEAM ROOFING SYSTEM (BEYOND)
MFG: (REFER TO PRE-ENGINEERED METAL BUILDING SHOP DRAWINGS)
COLOR: GALVALUME

KEY NOTE NO. 4:
TYPE: CAP FLASHING AT MASONRY
MFG: (REFER TO PRE-ENGINEERED METAL BUILDING SHOP DRAWINGS)
FINISH: PREFINISHED
COLOR: EQUAL TO BUTLER BUILDING "COOL BIRCH WHITE"

KEY NOTE NO. 5:
TYPE: CAP FLASHING AT FRONT ENTRY EXTERIOR INSULATION FINISH SYSTEM (EIFS)
MFG: (REFER TO PRE-ENGINEERED METAL BUILDING SHOP DRAWINGS)
FINISH: FACTORY PRIMED AND FIELD PAINT
COLOR: SHERWIN WILLIAMS "POSITIVE RED" SW6871 (SHER-CRYL) GLOSS
WITH SHERWIN WILLIAMS THREE COMPONENT (B65T105 / B65V105 / B65C105) CLEAR URETHANE

KEY NOTE NO. 6:
TYPE: SHEET METAL CONDUCTOR HEAD AND DOWNSPOUTS
MFG: LOCAL SUPPLIER
FINISH: FACTORY PRIMED AND FIELD PAINTED
COLOR: SHERWIN WILLIAMS (MATCH ADJACENT MASONRY FIELD COLOR) (SEMI-GLOSS)

DOORS AND WINDOWS
KEY NOTE NO. 12:
TYPE: STEEL DOORS AND FRAMES (DOORS NO. 2, 3, AND 7)
MFG: (OWNER FURNISHED / CONTRACTOR INSTALLED)
FINISH: FACTORY PRIMED AND FIELD PAINTED
COLOR: SHERWIN WILLIAMS "LATTE" SW6108 (SEMI-GLOSS)

KEY NOTE NO. 13:
TYPE: REFER TO WINDOW SCHEDULE
MFG: EPCO, KAWNEER, OR OLD CASTLE (VISTA WALL). (NO SUBSTITUTES)
COLOR: EPCO "IVY", KAWNEER "DARK IVY", VISTA WALL "INTERSTATE GREEN"

PAINTING
KEY NOTE NO. 16:
TYPE: STEEL BOLLARDS (REFER TO CIVIL DRAWINGS)
FINISH: FIELD PRIME AND PAINT
COLOR: SHERWIN WILLIAMS "HUNT CLUB" SW6468 (SEMI-GLOSS)

STONE VENEER
KEY NOTE 26:
TYPE: STONE VENEER
MFG: ELDERADO STONE
FINISH: RUSTIC LEDGE
COLOR: SAWTOOTH

KEY NOTE 27:
TYPE: STONE VENEER SILL
TYPE: ELDERADO STONE
FINISH: SNAPPED EDGE
COLOR: WALNUT

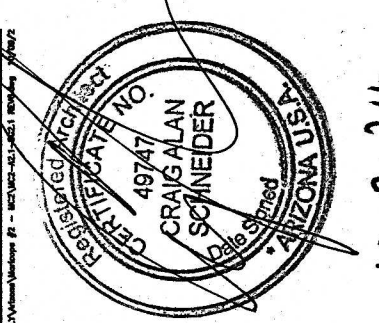
PRE-FABRICATED METAL CANOPY:
KEY NOTE NO. 29:
TYPE: PRE-FABRICATED METAL CANOPY SYSTEM
MFG: (REFER PROJECT MANUAL)
FINISH: KYNAR FINISH
COLOR: (MATCH WINDOW SYSTEM)

GENERAL NOTES

- (A) REFER TO PROJECT MANUAL FOR ADDITIONAL REQUIREMENTS.
- (B) REFER TO CIVIL DRAWINGS FOR ADDITIONAL REQUIREMENTS.
- (C) REFER TO PLUMBING, MECHANICAL, AND ELECTRICAL DRAWINGS FOR SYSTEM TYPES AND ADDITIONAL REQUIREMENTS.
- (D) REFER TO EXTERIOR FINISH SCHEDULE FOR MATERIAL TYPES.
- (E) REFER TO PRE-ENGINEERED METAL BUILDING SHOP DRAWINGS FOR ADDITIONAL REQUIREMENTS.
- (F) REFER TO SCOPE OF WORK SCHEDULE FOR ADDITIONAL REQUIREMENTS.

KEY NOTES

- (1) EXTERIOR INSULATION AND FINISH SYSTEM (EIFS).
- (2A) CONCRETE MASONRY UNIT (CMU) EXTERIOR WALL CONSTRUCTION (ACCENT COLOR). REFER TO PLANS, SECTIONS, AND DETAILS FOR ADDITIONAL REQUIREMENTS.
- (2B) CONCRETE MASONRY UNIT (CMU) EXTERIOR WALL CONSTRUCTION (FIELD COLOR). REFER TO PLANS, SECTIONS, AND DETAILS FOR ADDITIONAL REQUIREMENTS.
- (3) PRE-ENGINEERED METAL BUILDING SHEET METAL ROOFING SYSTEM. (BEYOND)
- (4) PRE-ENGINEERED METAL BUILDING SHEET METAL FLASHING (AT MASONRY). FIELD BREAK FROM PRIME PAINTED FLAT STOCK AS REQUIRED.
- (5) PRE-ENGINEERED METAL BUILDING SHEET METAL FLASHING (AT EIFS). FIELD BREAK FROM PRIME PAINTED FLAT STOCK AS REQUIRED.
- (6) INTERNAL GUTTER AND DOWNSPOUTS (BEYOND): PRE-ENGINEERED INTERNAL METAL GUTTER PER METAL BUILDING MANUFACTURER AND 6" PVC D.S. (BY CONTRACTOR).
- (7) CONCRETE MASONRY UNIT (CMU) CORNER FINISHED JAMB UNIT.
- (8) LINE OF ROOF BEYOND WITH 1/4":12" SLOPE MINIMUM.
- (9) SURFACE MOUNTED SIGN OWNER FURNISHED AND INSTALLED. PROVIDE BACKING FOR MOUNTING AND ROUGH-IN ELECTRICAL. COORDINATE REQUIREMENTS WITH OWNER. REFER TO SHEET SG2.1.
- (10) BUILDING ADDRESS NUMBERS IN 6" HIGH HELVETICA WHITE VINYL ADHERED TO EXTERIOR FACE OF GLAZING.
- (11) GAS METER. REFER TO PLUMBING PLANS. PAINT TO MATCH BUILDING FIELD COLOR.
- (12) EXTERIOR DOOR AND FRAME SYSTEM. REFER TO FLOOR PLAN AND DOOR SCHEDULE FOR TYPES.
- (13) EXTERIOR WINDOW SYSTEM. REFER TO FLOOR PLAN AND WINDOW SCHEDULE FOR TYPES.
- (14) APPROXIMATE LINE OF FOUNDATION, REFER TO STRUCTURAL DRAWINGS.
- (15) STEEL BOLLARDS, REFER TO CIVIL AND STRUCTURAL DRAWINGS.
- (16) HOSE BIB, REFER TO PLUMBING DRAWINGS.
- (17) LIGHT FIXTURE, REFER TO ELECTRICAL DRAWINGS.
- (18) ELECTRIC METER AND BOX. REFER TO ELECTRICAL PLANS. PAINT TO MATCH BUILDING FIELD COLOR.
- (19) MECHANICAL ROOF TOP UNIT, REFER TO MEP M1 DRAWING.
- (20) MECHANICAL WALL PENETRATIONS, REFER TO MECHANICAL DRAWINGS. PROVIDE FRAMING, FLASHING, AND SEALANT AS REQUIRED. INSTALL RESTROOM EXHAUST FANS 12" MINIMUM ABOVE INTERIOR CEILING FRAMING.
- (21) PLUMBING ROOF VENT, REFER TO PLUMBING DRAWINGS AND DETAIL 11/A4.2.
- (22) CONCRETE SPLASH BLOCK INSTALL AT EACH DOWNSPOUT.
- (23) MASONRY CONTROL JOINT. REFER TO STRUCTURAL DRAWINGS. PROVIDE SEALANT OVER 1/2" DIAMETER FOAM BACKER ROD.
- (24) RUSTICATION JOINT, REFER TO DETAIL 6/A3.2.
- (25) EXTERIOR INSULATION AND FINISH SYSTEM (EIFS) CORNICE.
- (26) MANUFACTURED STONE VENEER. REFER TO FINISH SCHEDULE.
- (27) MANUFACTURED STONE VENEER SILL. REFER TO FINISH SCHEDULE.
- (28) PRE-FABRICATED METAL CANOPY SYSTEM. REFER TO EXTERIOR FINISH SCHEDULE AND WALL SECTIONS FOR DETAILS.
- (29) PROVIDE AND INSTALL 5'-0" X 8'-0" STEEL TRELIS. PAINT TO MATCH BOLLARD COLOR.
- (30) EXTERIOR INSULATION AND FINISH SYSTEM (EIFS) CORNICE.
- (31) PRE-ENGINEERED METAL BUILDING THRU WALL OVERFLOW SCUPPER SYSTEM. REFER TO SHEET A3.3.



1736 East Sunshine, Suite 417
Springfield, Missouri 65804
417.862.0558
417.862.3265
e-mail: architect@esterlytschneider.com

ESTERLY SCHNEIDER & ASSOCIATES, INC.
architects & planners
AIA

PROJECT:
NEW O'REILLY AUTO PARTS STORE
41910 W. MARICOPA-CASA GRANDE HWY
MARICOPA, AZ #2
EXTERIOR ELEVATIONS

O'Reilly AUTO PARTS
CORPORATE OFFICES
233 SOUTH PATTERSON
SPRINGFIELD, MISSOURI 65802
(417) 862-2674 TELEPHONE

COMM # 4807
DATE: 4-12-24
REVISION
DATE: 7-17-24

10-3-24



1 SOUTH EXTERIOR ELEVATION

CE1 SCALE: 1/8" = 1'-0"



2 EAST EXTERIOR ELEVATION

CE1 SCALE: 1/8" = 1'-0"



3 NORTH EXTERIOR ELEVATION

CE1 SCALE: 1/8" = 1'-0"



4 WEST EXTERIOR ELEVATION

CE1 SCALE: 1/8" = 1'-0"

FINISH LEGEND:

	FIELD BLOCK -	PAINTED SPLIT FACE C.M.U. COLOR: SHERWIN WILLIAMS "LATTE" SW6108
	ACCENT BLOCK -	PAINTED SMOOTH FACE C.M.U. COLOR: SHERWIN WILLIAMS "SOFTER TAN" SW6141
	EIFS AROUND SIGN -	CUSTOM RED MIX BY DRYVIT ORAP011030S SHERWIN WILLIAMS "POSITIVE RED" SW6871
	STOREFRONT -	KAWNEER "DARK IVY"
	STONE VENEER -	CORONADO STONE SIERRA LEDGE COLOR: BROOKSIDE



5 REFUSE ENCLOSURE ELEVATION

CE1 SCALE: NOT TO SCALE



1736 East Sunshine, Suite 417
Springfield, Missouri 65804
417.862.0558
Fax: 417.862.3965
e-mail: architect@esterlyschneider.com

ESTERLY SCHNEIDER & ASSOCIATES, INC.
architects & planners
AIA

PROJECT:
NEW O'REILLY AUTO PARTS STORE
41910 W MARICOPA-CASA GRANDE HWY
MARICOPA, AZ #2
COLOR ELEVATIONS

O'Reilly AUTO PARTS
CORPORATE OFFICES
233 SOUTH PATTERSON
SPRINGFIELD, MISSOURI 65802
(417) 862-2674 TELEPHONE

COMM #	
DATE:	3-15-24
REVISION	
DATE:	10-4-24

NOT FOR CONSTRUCTION

CE1