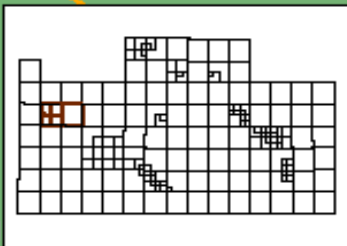
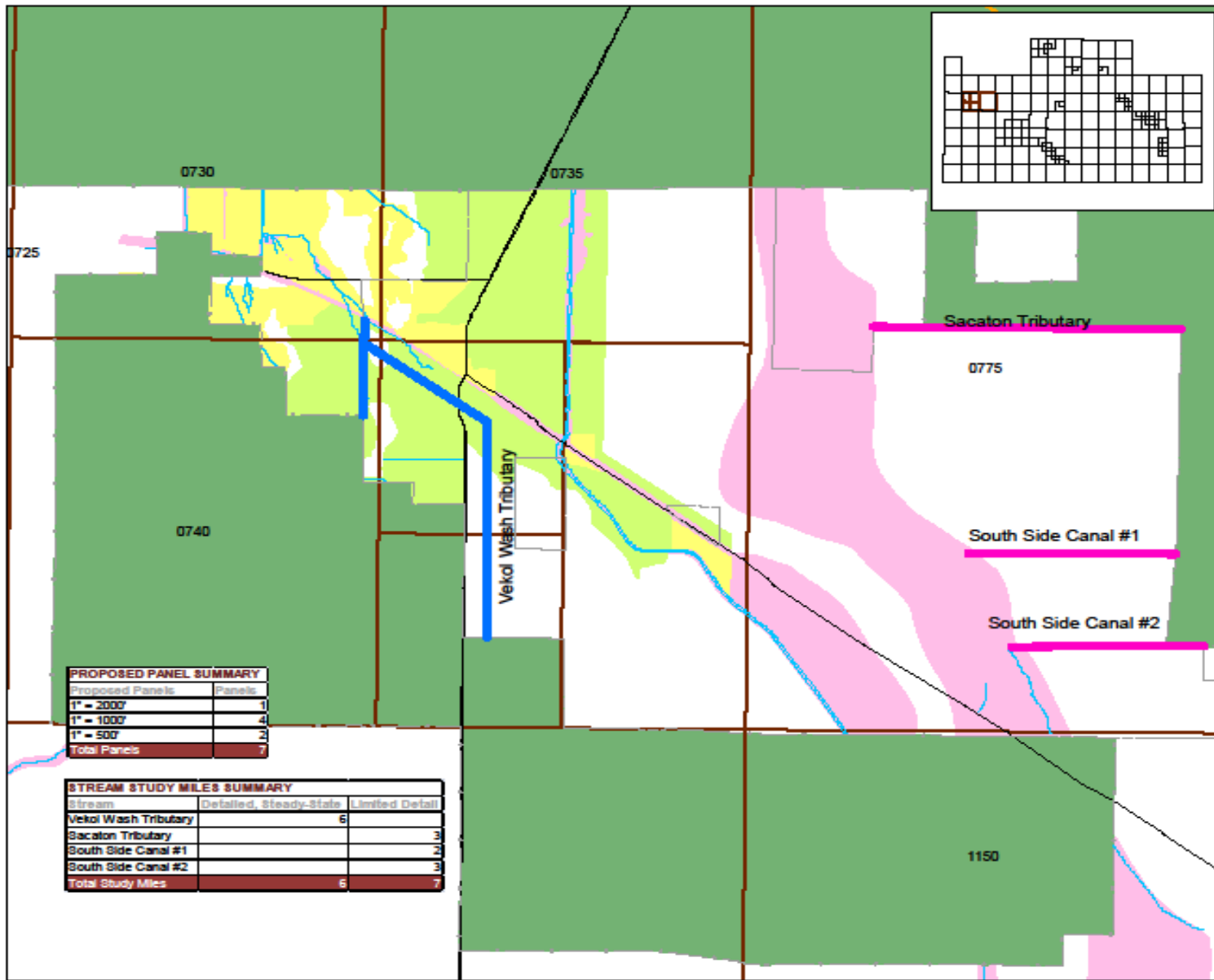




FEMA Appeal Update

July 17, 2012





MAP SYMBOLOLOGY

BASE DATA*

- FIRM Panel
- Revised Panel Neatline
- 1001 FIRM Panel Number
- Corporate Boundary
- County Boundary
- Reservation Boundary
- Primary Road
- Levee
- HUC-8 Watershed Boundary

FINALIZED SCOPE

- Approximate Study
- Limited Detailed Study
- Use of Effective Information
- Redelineated Study
- Detailed Study, Steady Flow
- Detailed Study, Unsteady Flow
- Detailed Study, 2-D
- No Restudy

FLOOD ZONES*

- Zone A
- Zone AE
- Zone AE/Floodway
- Zone AE (static elevations)
- Zone AH
- Zone AO
- Zone V
- Zone VE
- Zone VE static elevations
- Zone D
- Shaded Zone X

*From 2007 OFRM Database

MAP SCALE 1" = 7,000'

0 1,000 2,000 3,000 4,000 5,000 Feet

PROPOSED PANEL SUMMARY

Proposed Panels	Panels
1" = 2000'	1
1" = 1000'	4
1" = 500'	2
Total Panels	7

STREAM STUDY MILES SUMMARY

Stream	Detailed, Steady-State	Limited Detail
Vekol Wash Tributary	6	
Sacaton Tributary		3
South Side Canal #1		2
South Side Canal #2		3
Total Study Miles	6	7

NATIONAL FLOOD INSURANCE PROGRAM

PMR/OEN MAP

FINAL COUNTY ARIZONA

COMMUNITY: MARICOPA CITY OF PINAL COUNTY

NUMBER: 04022 04022

SUBMISSION BY: **BakerACCOM**

DATE: **APRIL 2, 2010**

Federal Emergency Management Agency



Vekol Wash Tributary



Legend

- APPEAL FLOODPLAIN
- CURRENT FLOODPLAIN (BAKERAEOM)

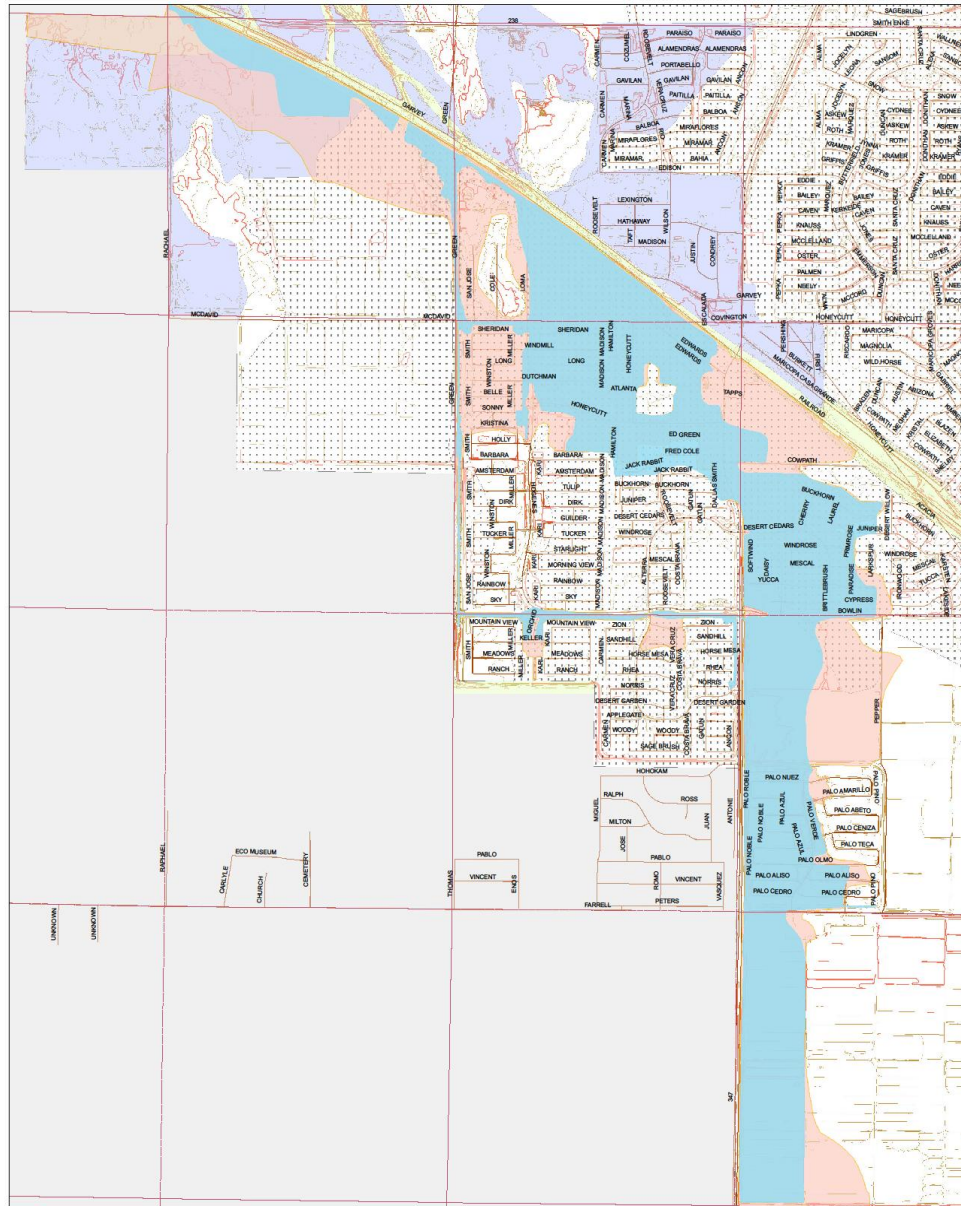
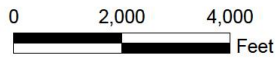
EFFECTIVE FLOOD ZONES

- A
- AE
- AH
- AO
- D
- SHADED X



VEKOL WASH TRIBUTARY
FLOODPLAIN DELINEATION STUDY

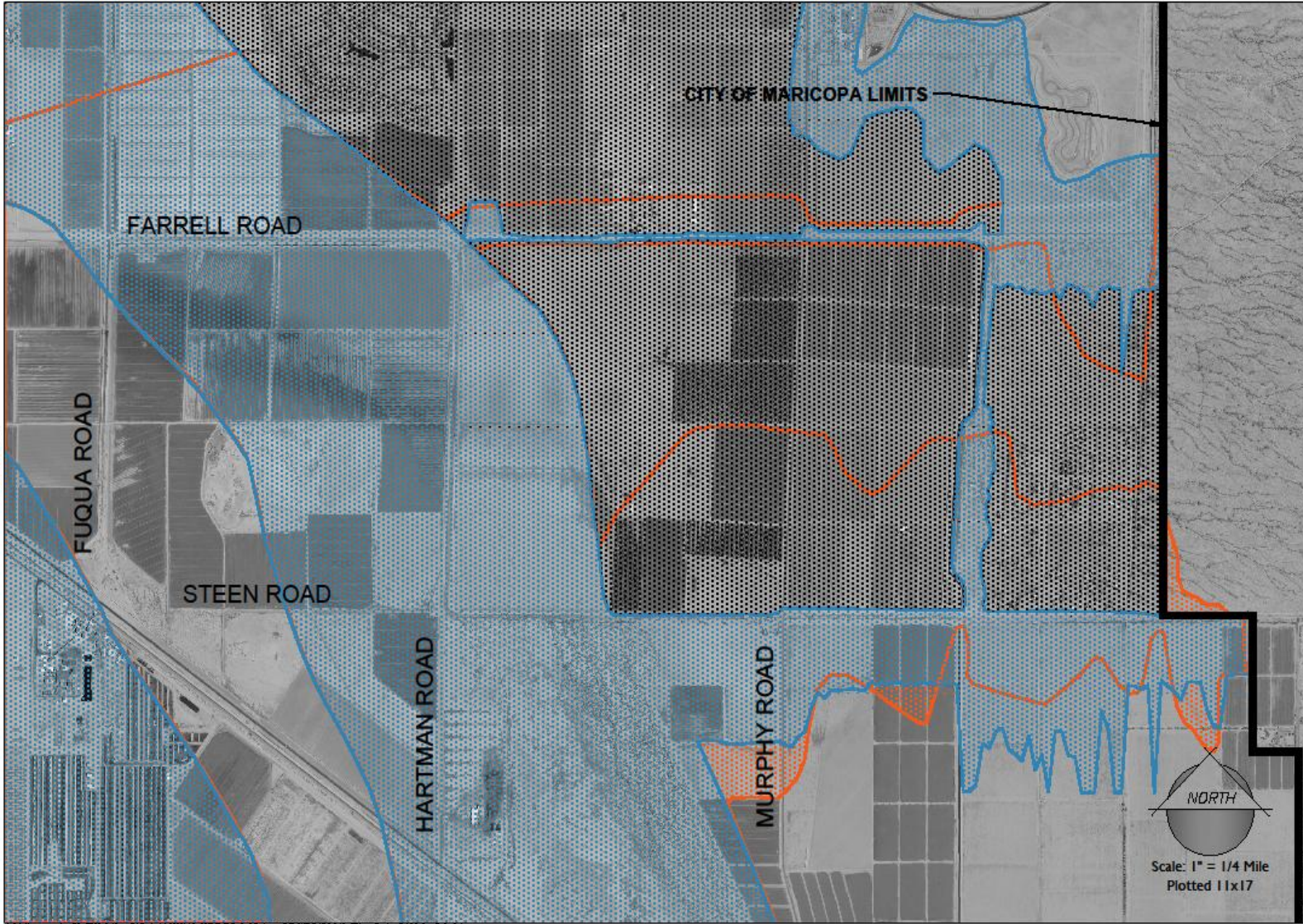
WOOD/PATEL
JUNE 29, 2012



Southside Watersheds



10-091



10/16/16 1:24:10 PM C:\Users\j\Documents\10-091\10-091\10-091.dwg - Display Scale for Plot 1.dwg



ceps group
 Engineers, Planners & Architects
 2425 West McDowell Avenue, Suite 100
 Phoenix, AZ 85015

SOUTHSIDE WATERSHED ANALYSIS
 CITY OF MARICOPA, ARIZONA
 OVERLAY EXHIBIT

Job No.	10-091
Sheet	1
Sheet No.	1
of 1	



Scale: 1" = 1/4 Mile
 Plotted 11x17



Questions ?



