

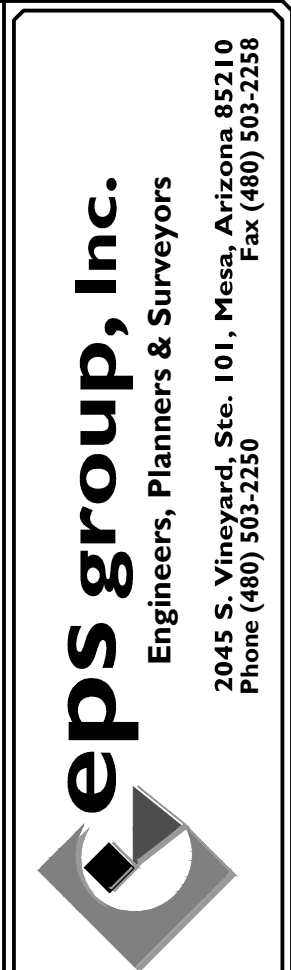
PHASE 1A

| | | |
|--|---------------------------------|------------------|
| | INFRASTRUCTURE IMPROVEMENTS | |
| | PARK A * | |
| | ALL WEATHER ROAD IMPROVEMENTS * | |
| | PARCEL 3 (60'x125') | 93 |
| | PARCEL 4 (50'x120') | 78 |
| | PARCEL 4A (50'x120') | 87 |
| | PARCEL 5 (70'x130') | 84 |
| | PARCEL 5 (20,000 S.F.) | 10 |
| | | 352 TOTAL |
| | EMERGENCY & SECONDARY ACCESS | |

PHASE 1B

| | | |
|--|-----------------------------------|------------------|
| | PHASE 1B INFRASTRUCTURE | |
| | PARK B * | |
| | PHASE 1B COLLECTOR IMPROVEMENTS * | |
| | PARCEL 6 (90'x135') | 59 |
| | PARCEL 6 (20,000 S.F.) | 11 |
| | PARCEL 7 (50'x120') | 81 |
| | PARCEL 7A (50'x120') | 85 |
| | PARCEL 8 (60'x125') | 57 |
| | PARCEL 8A (60'x125') | 61 |
| | | 354 TOTAL |

* INFRASTRUCTURE IMPROVEMENTS

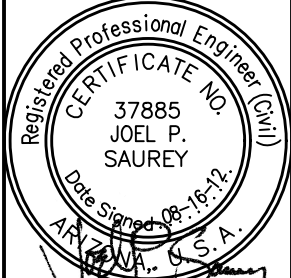


2045 S. Vineyard, Ste. 101, Mesa, Arizona 85210
Phone (480) 305-2250 Fax (480) 305-2258

CORTONA
CITY OF MARICOPA, ARIZONA
PHASING PLAN

Project: **CORTONA**
Revisions:
JUNE 18, 2012 - PRELIMINARY PLAT PRE-APP.
AUGUST 16, 2012 - 1ST PRELIMINARY PLAT SUBMITTAL
OCTOBER 31, 2012 - 2ND PRELIMINARY PLAT SUBMITTAL
DECEMBER 4, 2012 - 3RD PRELIMINARY PLAT SUBMITTAL

263-1100
1-800-STAKE-IT
(OUTSIDE MARICOPA COUNTY)
Designer: **APH**
Drawn by: **APH**



Expires: 09/30/14
Job No. **12-041**
PHASE
Sheet No. **11 of 11**

NOTE: THIS PRELIMINARY PLAT REMAINS IN STRICT ACCORDANCE WITH THE SUPPORTING SUBMITTAL DOCUMENTS AND THE STIPULATIONS APPROVED BY THE PLANNING AND ZONING COMMISSION AND THE MARICOPA CITY COUNCIL, CASE NOS. ZON05.06 & PAD05.06