

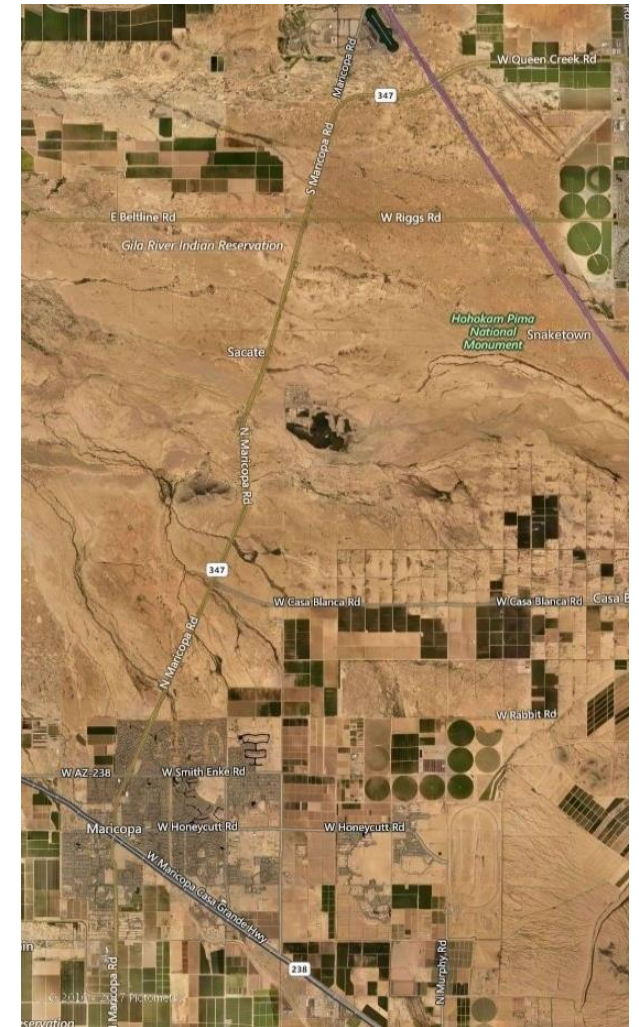


# SR-347, SR-238 to I-10/Maricopa Scoping Study and PEL Statement

City of Maricopa City Council Meeting  
July 17, 2018

# Study Overview

- Identify transportation needs along SR-347
- Provide implementation strategy
- Prepare a Planning and Environmental Linkages (PEL) Statement





# Study Scope

- **Maricopa County**
  - Determine I-10/SR-347/Queen Creek Road traffic interchange improvements
  - Evaluate need for intersection grade separation
  - Identify roadway widening geometry
- **Pinal County**
  - Identify roadway geometry to inform Pinal Regional Transportation Authority (Pinal RTA)'s widening project
- **Potential Scope Addition: City of Maricopa**
  - Evaluate Arizona Parkway and other concepts to alleviate congestion and facilitate continuous flow



# Looking Forward

- Draft Memorandums of Understanding
  - Pinal County/MAG
  - City of Maricopa/MAG (pending funding)
- Update project limits in MAG's work program
- Issue a Request for Proposals
- Kickoff project





# SR-347, SR-238 to I-10/Maricopa Scoping Study and PEL Statement

Quinn Quihui Castro  
Transportation Engineer  
(602) 254-6300