



These drawings are instruments of service and are the property of Perleman Architects, Inc. They are prepared by the architect and are not to be reproduced, copied or used for any other purpose without the written consent of Perleman Architects, Inc. The architect shall not be held responsible for any errors or omissions in these drawings. The contractor shall be responsible for obtaining all necessary permits and for compliance with all applicable laws, codes and regulations. The architect's liability is limited to the professional services rendered and does not extend to the construction of the project. The contractor shall be responsible for obtaining all necessary permits and for compliance with all applicable laws, codes and regulations. The architect's liability is limited to the professional services rendered and does not extend to the construction of the project.

© COPYRIGHT 2014, ROBERT PERLEMAN, AIA

PARKING ANALYSIS

REQUIRED
STAFF PARKING (2X SHIFT COUNT)
2 X SHIFT COUNT (8) = 12
VISITOR 2 (1 ADA) = 9

PROVIDED
STAFF PARKING = 12
VISITOR PARKING = 9

ACCESSIBLE PARKING SPACES PER
IBC 2006 TABLE 1106.1 = 1

GENERAL NOTES

- NO COMMUNICATION TOWER IS EXPECTED ON SITE
- RETENTION IS TO BE SHALLOW BASIN AND ONLY AGGREGATE FOR AREA OF DISTURBANCE
- PHASE II OF THE PROJECT INCLUDES LANDSCAPING SITE ASPHALT AND CONCRETE PAVING, CURB AND GUTTER DESIGN AND SITE FENCING WITH GATES.

LEGEND

INDICATES ACCESSIBLE ROUTE. MAX SLOPE TO BE 1:12 WITH A MAX. CROSS SLOPE TO BE 2:9.

↑ DIRECTION OF TRAFFIC FLOW

KEY NOTES

DESCRIPTION	DATE	BY	REV
501 NEW 3'-4" HIGH CMU MALL - SEE DETAIL 2-A-13			
502 PAINT EXISTING WATER EQUIPMENT TO MATCH BUILDING			
503 NEW 4" PAINTED STRIPING PER CITY OF MARICOPA STANDARDS			
504 NEW 3'-0" WIDE ADA ACCESSIBLE ROUTE. SLOPE TO BE A MAX. OF 1:20 WITH A MAX. CROSS SLOPE OF 2%			
505 30'-0" HIGH FLARE POLE CENTERED ON 8' X 8' X 4' CONCRETE PAD WITH LIGHTS - SEE ELECTRICAL DRAWINGS FOR ADDITIONAL INFORMATION			
506 EXISTING CONCRETE MALL TO REMAIN			
507 EXISTING CONCRETE APRON TO REMAIN - SEE CIVIL			
508 EXISTING CONCRETE DRIVE TO REMAIN			
509 ADA PARKING SIGNAGE PER CITY OF MARICOPA STANDARDS TO REMAIN			
510 EXISTING CONCRETE CURB TO REMAIN			
511 NEW CONCRETE CURB OR CONCRETE RIBBON CURB			
512 EXISTING HVAC AND STANDBY GENERATOR TO REMAIN			
513 RECONFIGURED RETENTION BASIN - SEE CIVIL			
514 NEW DECOMPOSED GRANITE BRUSHCOVER AND CUT ROCK BEDS - SEE LANDSCAPE			
515 NEW CONCRETE DRIVE OVER COMPACTED SUB BASE - SEE CIVIL FOR ADDITIONAL INFORMATION			
516 EXISTING SAND AND OIL INTERCEPTOR - ADJUST WITH TRAFFIC RINGS TO FLUSH OUT WITH TOP OF CONCRETE - SEE CIVIL			
517 NEW 6" GALV. ABOVE GROUND FUEL TANK AND DISPENSER ON 6" CONCRETE PAD WITH PROTECTION BOLLARDS - SEE NOTE FUEL NOTE AND ELECTRICAL DRAWINGS			
518 NEW 6" DIA. BOLLARDS (TYP OF 6) - SEE DETAIL T-A12			
519 NEW ELECTRIC ROLLING GATE, TRACK AND OPERATOR - CONTROLLED WITH ACCESS PROXY READER, KEY CODE AND OPTICOM. PROVIDE FREE EXIT AND SAFETY LOOPS - SEE ELECTRICAL & DETAILS 15-A13, 15-A15			
520 NEW POLE MOUNTED LIGHT FIXTURES - SEE ELECTRICAL & DETAIL 11-A13			
521 NEW 6'-0" HIGH CMU SCREEN MALL - SEE DETAIL 15-A13			
522 NEW 3'-4" HIGH DECORATIVE CMU MALL WITH 3'-0" HIGH PICKET VIBRA FENCE AND CMU PILLAR WITH CONCRETE CAP PAINTED FINISH PICKETS - SEE DETAIL T-A13			
523 NEW FENCE PER KEY NOTE 52.2, BUT CONTRACTOR TO KNOCK OUT SECTION FOR FUTURE EXPANSION			
524 NEW LANDSCAPE - SEE LANDSCAPE PLANS			
525 6" RAISED CONCRETE - SEE CIVIL			
526 CONCRETE JOINTS AS SHOWN - SEE CIVIL			
527 EXISTING ELECTRICAL EQUIPMENT - SEE ELECTRICAL			
528 ACCESS CONTROL PEDESTAL - SEE DETAIL 1-A13			
529 CONCRETE WHEEL STOP			

Description	Date	By	Rev

**FIRE STATION 572
SITE IMPROVEMENTS**
BOWLIN ROAD
MARICOPA, ARIZONA

Drawn/Checked By
CSH / GRA

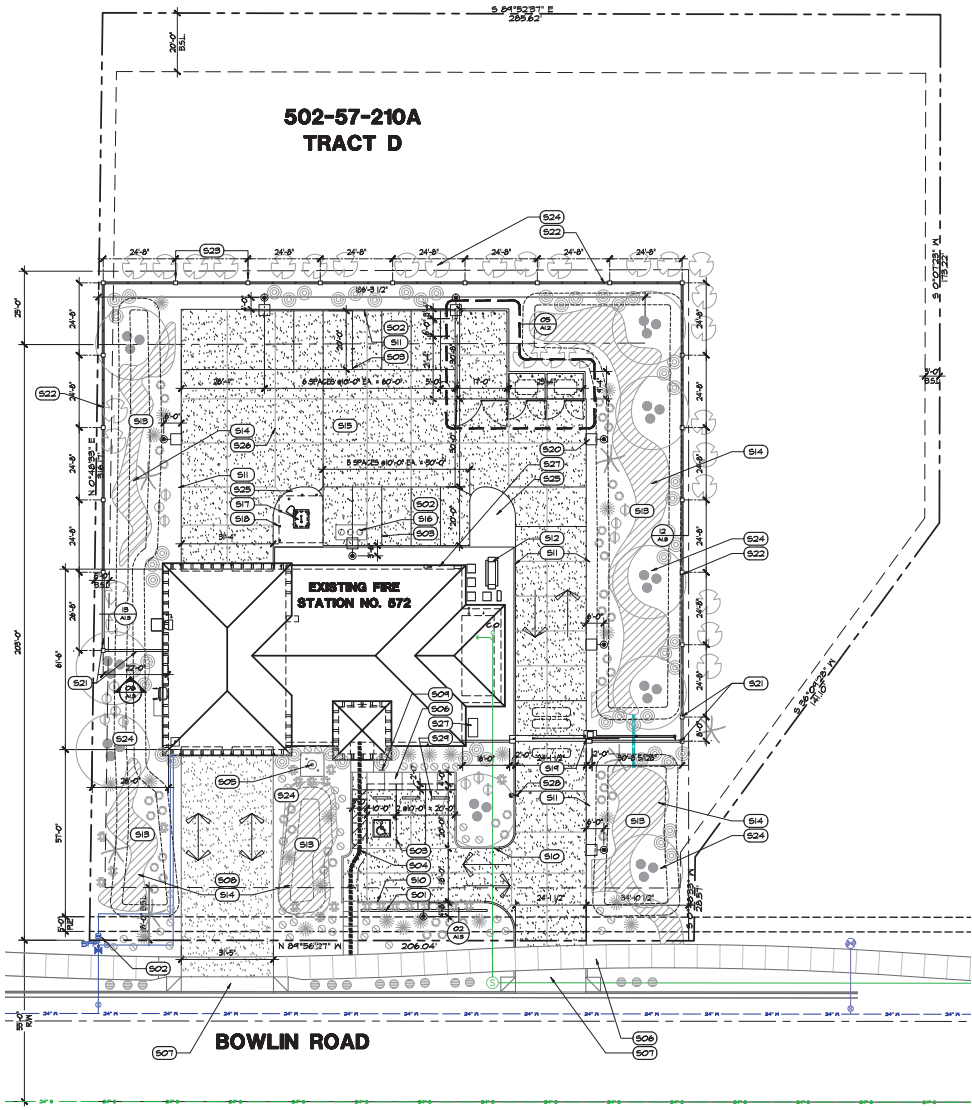
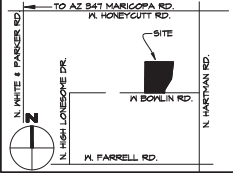
Date
17 MAR-14

Project Number
313055

Sheet Number
**ARCHITECTURAL
SITE PLAN**

A1.1

VICINITY MAP



FUEL FILLING SYSTEM

DIESEL FUELING SYSTEM
ABOVE GROUND DIESEL FUEL SYSTEM
550 GAL. UL2089 LISTED SUB-BASE TANK WITH TANK MOUNTED FILL-RITE PUMP DISPENSER, 20' OF 1" HOSE AND DISPENSER, 416 CLOCK GAUGE ALARM SYSTEM TO NOTIFY AT 40% TO WARN DRIVER NEARLY FULL AND TO SHUT PUMP DOWN, 518 SPILL BOX WITH THE 40% OVERFILL VALVE TO SHUT FLOW OFF AT 45%, AND ALL ASSOCIATED FITTINGS AND HARDWARE FOR COMPLETE TURNKEY SYSTEM.
CONTACT:
SUPERIOR SYSTEMS & TECHNOLOGIES
214 COUNTY ROAD 281
MCKENZIE, TX 75266
525-640-0248
SAMMY PEACOCK
sp@superiorstms.com

ARCHITECTURAL SITE PLAN

SCALE: 1" = 20'-0"

