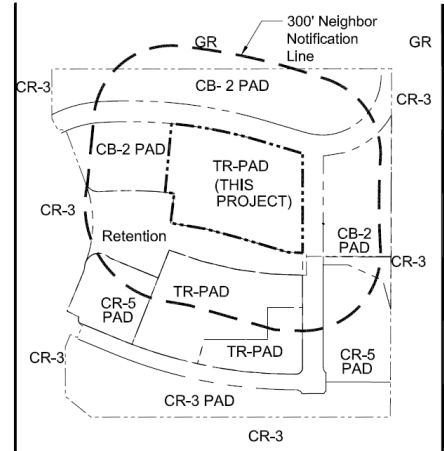
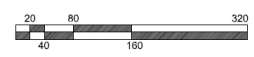
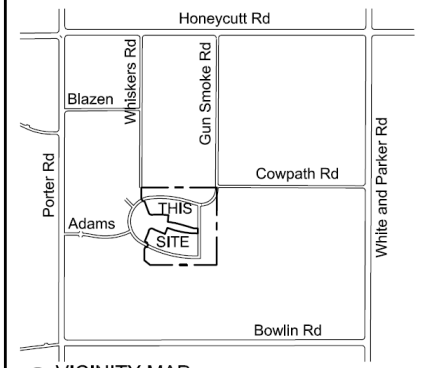


**1 SITE PLAN NEW P.A.D.**  
SCALE: 1" = 80'-0" (1:960)



**3 CONCEPTUAL ZONING MAP**  
NO SCALE



**2 VICINITY MAP**  
NO SCALE

**SHEET LIST**

- |         |                                |
|---------|--------------------------------|
| SPR.1   | Overall Site Plan              |
| SPR.2   | Project Site- Phase I          |
| SPR.3   | Phase 2 Site - Conceptual      |
| SPR.4   | Preliminary Landscape Plan     |
| SPR.5.1 | Site Photometry                |
| SPR.5.2 | Site Lighting Specification    |
| SPR.6   | Phase I - Grading & Drainage   |
| SPR.7   | Phase I - Water & Sewer        |
| SPR.8b  | Church Elevations (b&w)        |
| SPR.8c  | Church Elevations (color)      |
| SPR.9b  | Admin Elevations (b&w)         |
| SPR.9c  | Admin Elevations (color)       |
| SPR.10b | Phase I & 2 Elevations (b&w)   |
| SPR.10c | Phase I & 2 Elevations (color) |



**Liturgical Environs PC**  
9402 South 47th Place  
Phoenix Arizona 85044  
Office: 480.783.8787  
Fax: 480.783.8787  
Email: steve@liturgicalenvirons.com  
Website: liturgicalenvirons.com

**SITE PLAN REVIEW for**  
**Our Lady of Grace Catholic Church**  
SW Corner of Gunsmoke & Cow Path, Maricopa, AZ, 85138  
Our Lady of Grace Roman Catholic Parish - Maricopa



Drawing Title  
**Overall Site Plan**

ALL DESIGNS AND DRAWINGS ARE  
© LITURGICAL ENVIRONS PC 2012

Job Number  
**2011-OLGM-03**

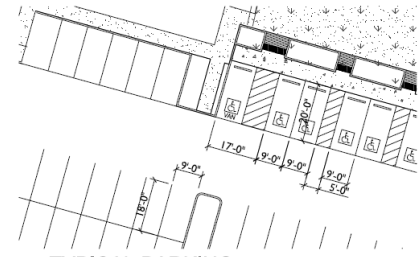
Date  
**14 May 2012**

Drawing Number  
**SPR. I**



Liturgical Environments PC  
 9402 South 47th Place  
 Phoenix Arizona 85044  
 Office: 480.783.8787  
 Fax: 480.783.8787  
 Email: steve@liturgicalenviro.com  
 Website: liturgicalenviro.com

**MECHANICAL NOTE:**  
 Ground units (Trane YCH181 or sim.) to be shielded from view behind 6' masonry walls.  
 Roof units (Trane YHC 120 or sim.) to be shielded from ground view by parapets or mechanical screens



2 TYPICAL PARKING  
 1" = 20'-0"

**Development Standards**

**LOCATION:**  
 SW Corner of Guns smoke and Cowpath, Maricopa AZ 85138  
 Glennwind Parcel 17 Replat (see number 2009-117628)  
 Parcel 512-42-717 (Lot 1)

**ZONING**  
 TR-PAD per PAD P&Z 11-01, adopted 20 March 2012

**ZONING REQUIREMENTS**

Required Front Yard Setback	0 feet
Required Side Yard Setback	0 feet
Required Rear Yard Setback	0 feet
Maximum Building Height	75 feet (note: nonhabitable towers, etc. unlimited)
Maximum Lot Coverage	unlimited

**LAND USE DATA**  
 SITE AREA (acreage is both net and gross)

Total PAD Project	1,629,563 SF	37.41 AC
This Project Phase - Site	199,928 SF	4.59 AC
This Project Phase - Roads, etc	150,032 SF	3.44 AC
This Project Phase - TOTAL	349,960 SF	8.03 AC

**LANDSCAPE CALCULATION**

Parking Surface	55,359 SF	27.68%
Hardscape (Sidewalks, Patio)	11,323 SF	5.66%
Building Roof Areas	18,537 SF	9.27%
Landscape	114,772 SF	57.39%
Total Site	199,928 SF	100%

**BUILDING AREA**

Church	10,329 SF
Administration/ Social Hall	5,724 SF
Total Building Area	16,053 SF

**PARKING CALCULATIONS** (Per City of Maricopa Chap. 16 Section 2103 modified by PAD P&Z 11-01, adopted 20 March 2012)

REQUIRED PARKING	Ratio	Basis	Count
Building	1:5	500 seats	100
Administration	1:375	5724 sf	16
<b>Total</b>			<b>116</b>

H/C Spaces (101-150 per IBC 1106) 5  
 Standard Parking Spaces 111

**PROVIDED PARKING**

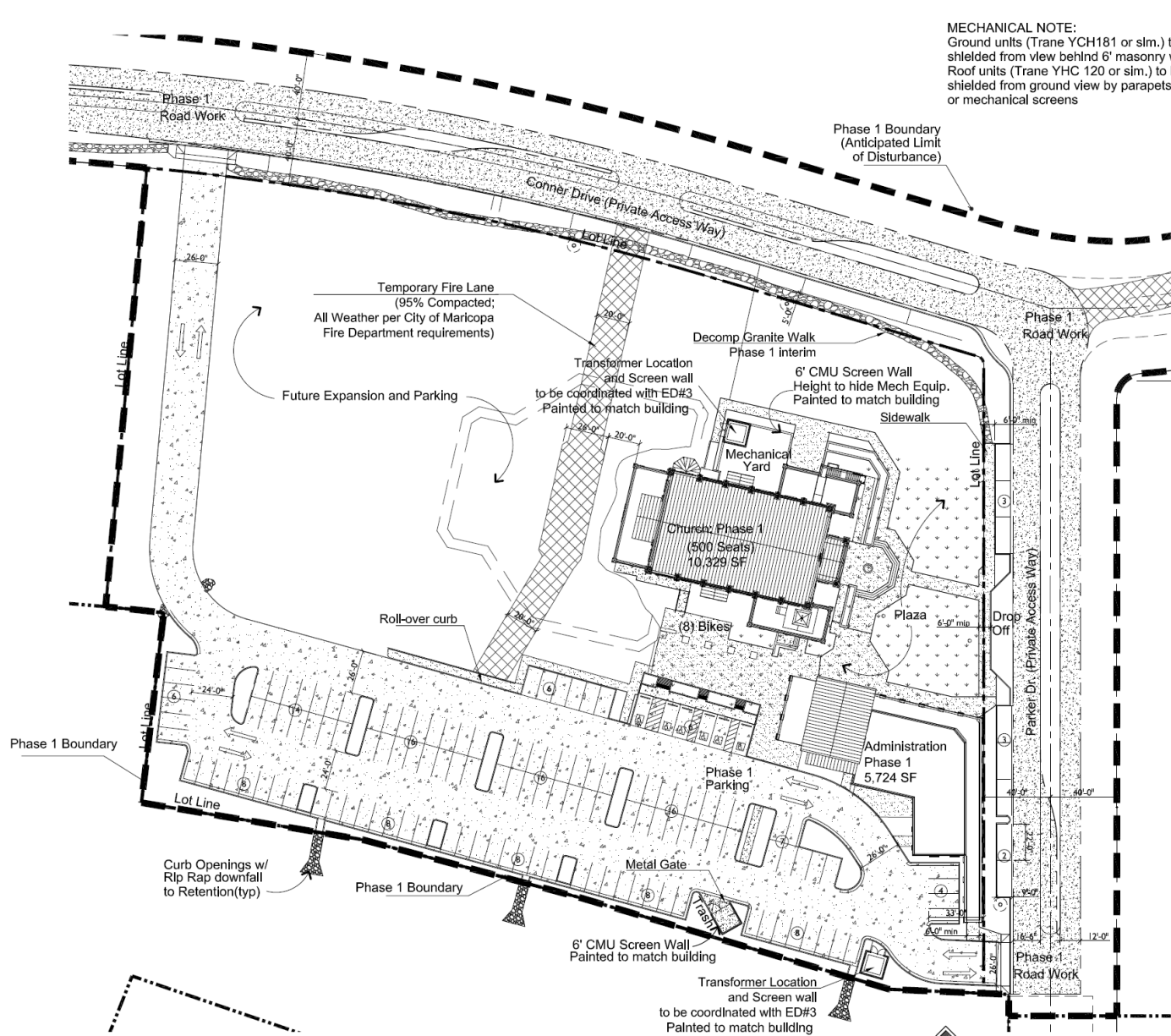
Parking Lot	131	(includes 6 H/C spaces)
Street Parking	8	
<b>Total Parking Provided</b>	<b>139</b>	

**PARKING ISLAND LANDSCAPE REQUIREMENTS**

Bicycles	1:20	139	7
Trees	1:8	139	18
Bushes	2:8	141	35



1 CHURCH AERIAL - PHASE 1  
 NO SCALE



2 CHURCH SITE - PHASE 1  
 SCALE: 1" = 30'-0" (1:360)



**SITE PLAN REVIEW for**  
**Our Lady of Grace Catholic Church**  
 SW Corner of Guns smoke & Cow Path, Maricopa AZ, 85138  
 Our Lady of Grace Roman Catholic Parish - Maricopa



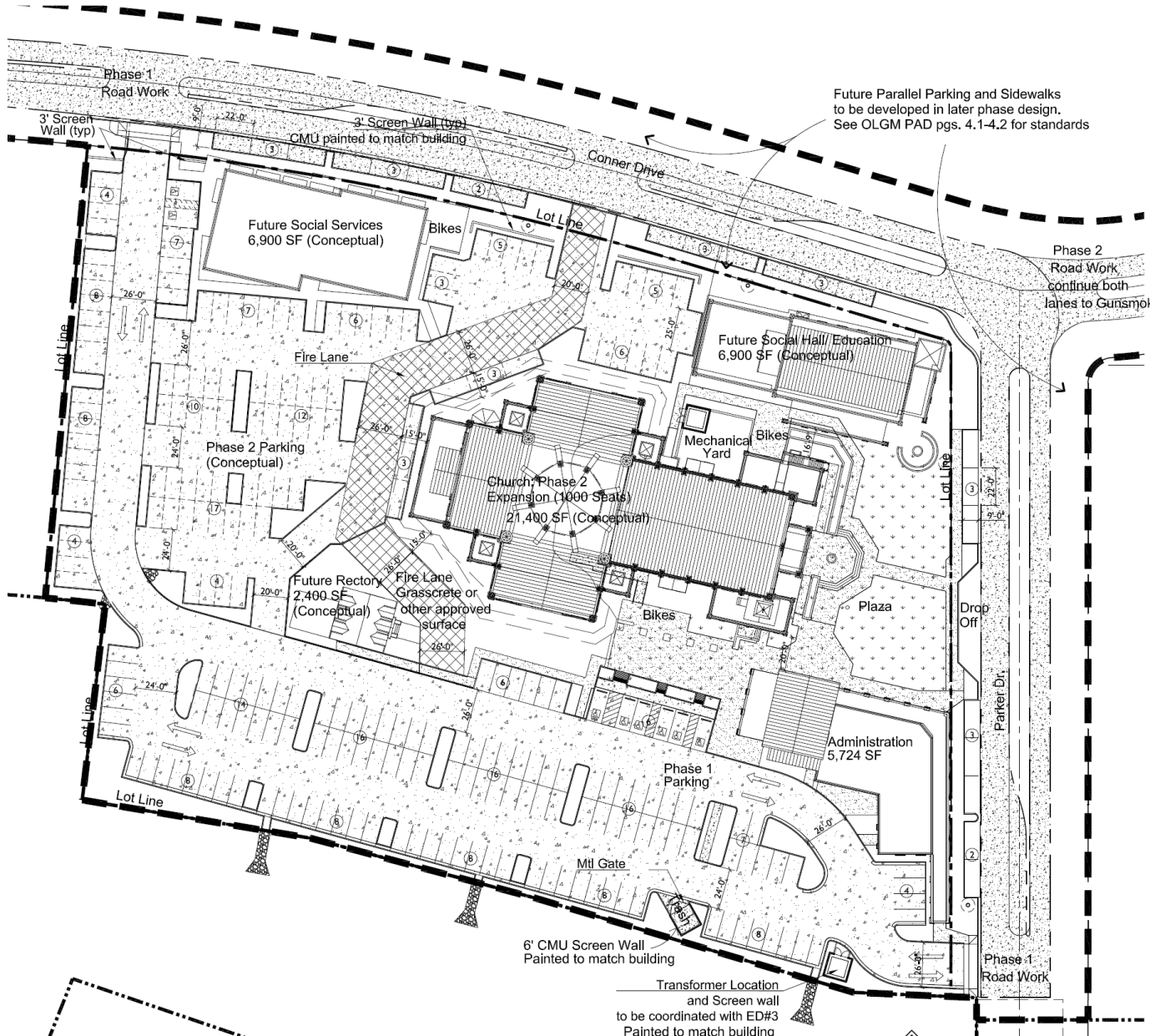
Drawing Title  
**Project Site Phase 1**

ALL DESIGNS AND DRAWINGS ARE  
 © LITURGICAL ENVIRONNS PC 2012

Job Number  
**2011-OLGM-03**

Date:  
**14 May 2012**

Drawing Number  
**SPR.2**



Future Parallel Parking and Sidewalks to be developed in later phase design. See OLG M PAD pgs. 4.1-4.2 for standards

Development Standards (estimated per concept)

**LOCATION:**  
SW Corner of Gunsmoke and Cowpath, Maricopa AZ 85138  
Glennville Parcel 17 Replat (see number 2009-117628)  
Parcel 512-42-717 (Lot 1)

**ZONING**  
TR-PAD per PAD P&Z 11-01, adopted 20 March 2012

**ZONING REQUIREMENTS**

Required Front Yard Setback	0 feet
Required Side Yard Setback	0 feet
Required Rear Yard Setback	0 feet
Maximum Building Height (unlimited)	75 feet (note: nonhabitable towers, etc.)
Maximum Lot Coverage	unlimited

**LAND USE DATA**

SITE AREA (acreage is both net and gross)		
Total PAD Project	1,629,563 SF	37.41 AC
This Project Phase - TOTAL	1,99,928 SF	4.59 AC

**LANDSCAPE CALCULATION** (all calculations are conceptual and approximate)

Parking Surface	95,115 SF	47.56%
Hardscape (Sidewalks, Patio)	24,000 SF	12.00%
Building Roof Areas	44,878 SF	22.44%
Landscape	35,998 SF	18.00%
Total Site	199,928 SF	100%

**BUILDING AREA** (conceptual and approximate)

Church	21,400 SF
Administration/ Social Hall	5,724 SF
Rectory w/ Garage	2,400 SF
Social Services	6,900 SF
Social Hall/ Education	6,900 SF
Total Building Area	43,324 SF

**PARKING CALCULATIONS**  
(Per City of Maricopa Chap 16 Section 2103 modified by PAD P&Z 11-01, adopted 20 March 2012)

**REQUIRED PARKING** (estimated per concept)

Building	Ratio	Basis	Count
Church (fixed seats)	1:5	1500 seats	300
Administration	1:375	5,724 sf	16
Rectory (garage parking)			2
Social Services	1:375	6,900 sf	18
Social Hall/ Education	1:375	6,900 sf	18
Total			354

H/C Spaces (301-400 per IBC 1106)

Standard Parking Spaces	346
-------------------------	-----

**PROVIDED PARKING**

Parking Lot	243 (includes 8 H/C spaces)
Rectory Garage	2
Shown Street Parking	22
Assumed Street and Shared Parking	87*
Total Parking Provided	354

\*Note: Per "Our Lady of Grace Planned Area Development PAD Booklet" (approved 3/20/12); pg. 7.3:

"On street parking can, and shall be assumed to accommodate any additional parking requirements for any type of zoning or function that may require it."

Minimum Assumed Street Parking Calculation:  
Length of Streets (centerline) = +/- 3200 LF  
Assume 1 car per 60 LF x 2 sides = (3200 x 2)/60 = 107 Street Parking Spaces

**PARKING ISLAND LANDSCAPE REQUIREMENTS\***

Bicycles	1:20	354	18
Trees	1:8	354	44
Bushes	2:8	354	88

\*Note: Phase Two landscape plans to be developed at time of submission for that phase.

1 CHURCH SITE - PHASE 2  
SCALE: 1" = 30'-0" (1:360)



1 CHURCH AERIAL - PHASE 2 (Concept)  
NO SCALE



**Liturgical Environs PC**  
9402 South 47th Place  
Phoenix, Arizona 85044  
Office: 480.783.8787  
Fax: 480.783.8787  
Email: steve@liturgicalenvirons.com  
Website: liturgicalenvirons.com

**SITE PLAN REVIEW for**  
**Our Lady of Grace Catholic Church**  
SW Corner of Gunsmoke & Cow Path, Maricopa AZ, 85138  
Our Lady of Grace Roman Catholic Parish - Maricopa



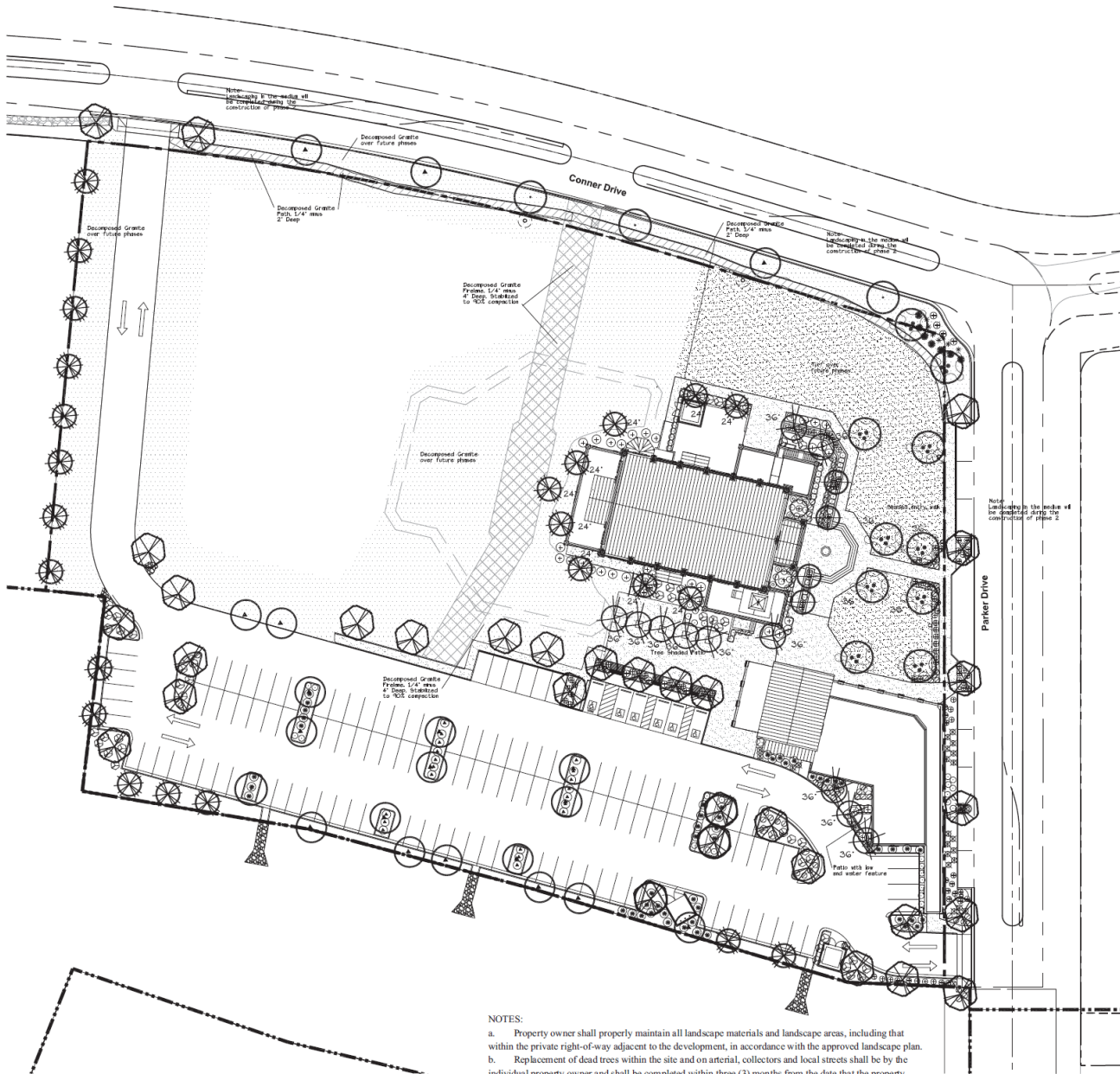
**Phase 2 Site (Conceptual)**

ALL DESIGNS AND DRAWINGS ARE  
© LITURGICAL ENVIRONS PC 2012

Job Number:  
**2011-OLGM-03**

Date:  
**14 May 2012**

Drawing Number:  
**SPR.3**



NOTES:  
 a. Property owner shall properly maintain all landscape materials and landscape areas, including that within the private right-of-way adjacent to the development, in accordance with the approved landscape plan.  
 b. Replacement of dead trees within the site and on arterial, collectors and local streets shall be by the individual property owner and shall be completed within three (3) months from the date that the property owner is notified by the City.

PLANT MATERIAL LEGEND

KEY	SYMBOL	BOTANICAL/Common NAME	SIZE	Height/Spread	QUANT.
<b>TREES:</b>					
1	(Symbol)	Dalbergia sissoo Sissoo	24" Box	10' x 4' 1.25'	21
2	(Symbol)	Fraxinus v. 'Rio Grande' Rio Grande Ash	24" Box	10' x 4' 1.5'	27
3	(Symbol)	Nerium Oleander 'Silver Ages' Standard Oleander	24" Box	9' x 4' 1.25'	4
4	(Symbol)	Olea europaea 'Swan Hill' Swan Hill Olive	24" Box	8' x 5' 1.5'	4
5	(Symbol)	Ficus elastica Model Ficus	15 Gal	6' x 2' 1.5'	15
6	(Symbol)	Quercus virginiana Heritage Live Oak	24" Box	9' x 4' 1.25'	8
7	(Symbol)	Ulmus parviflora Evergreen Elm	24" Box	10' x 4' 2'	3
8	(Symbol)	Washingtonia robusta Mexican Fan Palm	10'-25' Tall	see plan	0
9	(Symbol)	Cyperus sempervirens 'Strictus' Italian Cypress	48" Box	10' x 3' 3"	2
<b>SMALL PALMS:</b>					
10	(Symbol)	Chamaecyparis humilis Mediterranean Fan Palm	10 Gallon		1
<b>LARGE SHRUBS:</b>					
11	(Symbol)	Dryopteris 'Valentine' Valentine Bush	5 Gallon		51
12	(Symbol)	Leucophyllum angustifolium Rio Bravo Texas Ranger	5 Gallon		55
13	(Symbol)	Nerium o. 'Festive Pink' Festive Pink Oleander	5 Gallon		20
14	(Symbol)	Xylococcus congestus compactus Xylococcus	5 Gallon		28
<b>MEDIUM AND SMALL SHRUBS:</b>					
15	(Symbol)	Carex grandiflora Green Carex, Natal Plum	5 Gallon		33
16	(Symbol)	Callistemon citrinus 'Little John' Little John Bottle Brush	5 Gallon		84
17	(Symbol)	Muhlenbergia capensis 'Royal Mist' Royal Mist Deer Grass	5 Gallon		28
18	(Symbol)	Ruellia peninsularis Beja Ruella	5 Gallon		8
<b>GROUNDCOVERS:</b>					
19	(Symbol)	Lantana n. 'New Gold' New Gold Lantana	1 Gallon		57
20	(Symbol)	Rosmarinus officinalis 'Prostratus' Dwarf Rosemary	5 Gallon		63
21	(Symbol)	Waldenia tripartita Yellow Dot	1 Gallon		10
<b>ACCENTS:</b>					
22	(Symbol)	Bougainvillea 'Torch Glow' Torch Glow Bougainvillea	5 Gallon		3
23	(Symbol)	Agave gemiflora Tall Flower Agave	5 Gallon		6
24	(Symbol)	Dasylistron wheeleri Desert Spoon	5 Gallon		6
<b>LANDSCAPE MATERIALS:</b>					
25	(Symbol)	Decomposed Granite Desert Gold	1/2" size screened	2' Deep	
26	(Symbol)	Concrete Header	4' x 6', Curbstyle	2' Deep	
27	(Symbol)	Mulch Bermuda		Sod	
28	(Symbol)	Decomposed Granite Paveless Desert Gold	1/4" size, 4" Deep	Stabilized to 100% compaction	
29	(Symbol)	Decomposed Granite Path Desert Gold	1/4" size	2' Deep	

NOTE:  
 PHASE TWO LANDSCAPE DESIGN WILL BE DEVELOPED AND SUBMITTED FOR APPROVAL AT THE TIME OF SUBMISSION FOR THAT PHASE OF WORK.

PRELIMINARY  
 LANDSCAPE PLAN  
 SCALE 30"=1'-0"  
 0 30 60 120



Liturgical Environs PC  
 9402 South 47th Place  
 Phoenix Arizona 85044  
 Office: 480.783.8787  
 Fax: 480.783.8787  
 Email: steve@liturgicalenvirons.com  
 Website: liturgicalenvirons.com

**SITE PLAN REVIEW for**  
**Our Lady of Grace Catholic Church**  
 SW Corner of Gunsake & Cow Path, Maricopa, AZ, 85138  
 Our Lady of Grace Roman Catholic Parish - Maricopa

Stamp

Drawing Title  
**Preliminary  
 Landscape Plan**

ALL DESIGNS AND DRAWINGS ARE  
 LITURGICAL ENVIRONS PC 2012

Job Number  
**2011-OLGM-03**

Date  
**14 May 2012**

Drawing Number  
**SPR.4**



- SA USARCHITECTURAL SIK-HR-V-SQ-250MK/RSS13.5 (16' MOUNTING HEIGHT)
- SB USARCHITECTURAL SIK-103-13-250MK/RSS13.5 (16' MOUNTING HEIGHT)
- SC USARCHITECTURAL SIK-HR-V-SQ-250MK/RSS12 (12' MOUNTING HEIGHT)
- SD AMERICAN ELECTRIC ATRI-30LE7-E15-INVLT-R3 (2' HEADS, 20' MOUNTING HEIGHT)
- ▽ SF EXTERIOR LED FLOOD (FIXTURE TO ILLUMINATE SIDE OF BUILDING TO BE AIMED LESS THAN 90 DEGREES UPWARD)
- SG FLUSH GRADE LED UPLIGHT IN TREE PLANTERS (FIXTURE TO ILLUMINATE UNDERSIDE OF TREE CANOPY)
- SH EXTERIOR REFRACTIVE SPINNER (FRL)
- ✦ SK CHANDELER PENDANT (OFL)
- SL RECESSED LED STEP LIGHT
- H RECESSED DOWNLIGHT (OFL)

**SITE PHOTOMETRY**  
1"=30'-0"



**Liturgical Environments PC**  
9402 South 47th Place  
Phoenix Arizona 85044  
Office: 480.783.8787  
Email: steve@liturgicalenvironments.com  
Website: liturgicalenvironments.com

225 N. Greenway Parkway  
Suite 100  
Phoenix, Arizona 85004  
Phone: 480.783.8787  
Fax: 480.783.8787  
E-MAIL: steve@liturgicalenvironments.com  
www.liturgicalenvironments.com

ALL WORK IS DONE IN ACCORDANCE WITH THE ILLINOIS PROFESSIONAL ENGINEERING ACT (2005) AND THE ILLINOIS PROFESSIONAL ARCHITECTURE ACT (2005). THE DESIGNER ASSUMES NO LIABILITY FOR THE DESIGN OR CONSTRUCTION OF THE WORKS.

**SITE PLAN REVIEW for**  
**Our Lady of Grace Catholic Church**  
SW Corner of Gunsmoke & Cow Path, Maricopa AZ. 35133  
Our Lady of Grace Roman Catholic Parish - Maricopa



Drawing Title  
**Site Photometry**

ALL DESIGNS AND DRAWINGS ARE  
© LITURGICAL ENVIRONMENTS PC 2012

No. Number  
2011-OLGM-03

Date  
02 April 2012

Drawing Number  
**SPR.5.1**





North Elevation  
 2.7 10.7 42.7  
 5.3 21.3



West Elevation  
 2.7 10.7 42.7  
 5.3 21.3



East Elevation  
 2.7 10.7 42.7  
 5.3 21.3



South Elevation  
 2.7 10.7 42.7  
 5.3 21.3

TYPICAL EXTERIOR MATERIALS:

Walls; Stucco/ EIFS painted or integral color (RGB = 200/180/160)

Walls; Manufactured Stone (Coronado "Italian Villa Coastal Brown" or sim.)

Pitched Roofs; Kynar type green copper finish batten seam profile; Sarnafil "Decor" profile Patina Green; or sim.

Coping, Window and Door Surrounds, etc; Integral color or painted precast concrete or GFRC; (RGB = 240/220/200),

Windows; Lt. Bronze Tint, low E, double glazed where clear. Stained glass art panels at church where appropriate.

Doors; Wood finished fiberglass or painted punched metal exterior doors (RGB = 120/80/60).



Liturgical Environs PC  
 7402 South 47th Place  
 Phoenix Arizona 85044  
 Office: 480.783.8787  
 Fax: 480.783.8787  
 Email: steve@liturgicalenvirons.com  
 Website: liturgicalenvirons.com

SITE PLAN REVIEW for  
**Our Lady of Grace Catholic Church**  
 SW Corner of Guns Smoke & Cow Path, Maricopa AZ, 85138  
 Our Lady of Grace Roman Catholic Parish - Maricopa



Drawing Title  
**Church Building**

ALL DESIGNS AND DRAWINGS ARE  
 © LITURGICAL ENVIRONS PC 2012

Job Number  
 2011-OLGM-03

Date  
 14 May 2012

Drawing Number  
**SPR.8c**



East Elevation



TYPICAL EXTERIOR MATERIALS:

Walls: Stucco/ EIFS painted or Integral color (RGB = 200/180/160)

Walls; Manufactured Stone (Coronado "Italian Villa Coastal Brown" or sim.)

Pitched Roofs: Kynar type green copper finish batten seam profile; Sarnafil "Decor" profile Patlna Green; or sim.

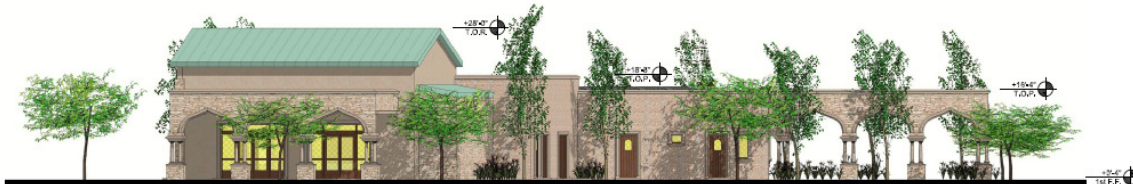
Coping, Window and Door Surrounds, etc; Integral color or painted precast concrete or GFRC; (RGB = 240/220/200).

Windows: Lt. Bronze Tint, low E, double glazed where clear. Stained glass art panels at church where appropriate.

Doors: Wood finished fiberglass or painted punched metal exterior doors (RGB = 120/80/60).



North Elevation



West Elevation



South Elevation



Liturgical Environs PC

9402 South 47th Place  
Phoenix Arizona 85044  
Office: 480.783.8787  
Fax: 480.783.8787  
Email: steve@liturgicalenvirons.com  
Website: liturgicalenvirons.com

**SITE PLAN REVIEW for**  
**Our Lady of Grace Catholic Church**  
 SW Corner of Gunsmoke & Cow Path, Maricopa AZ, 85138  
 Our Lady of Grace Roman Catholic Parish - Maricopa



Drawing Title

**Admin. Building**

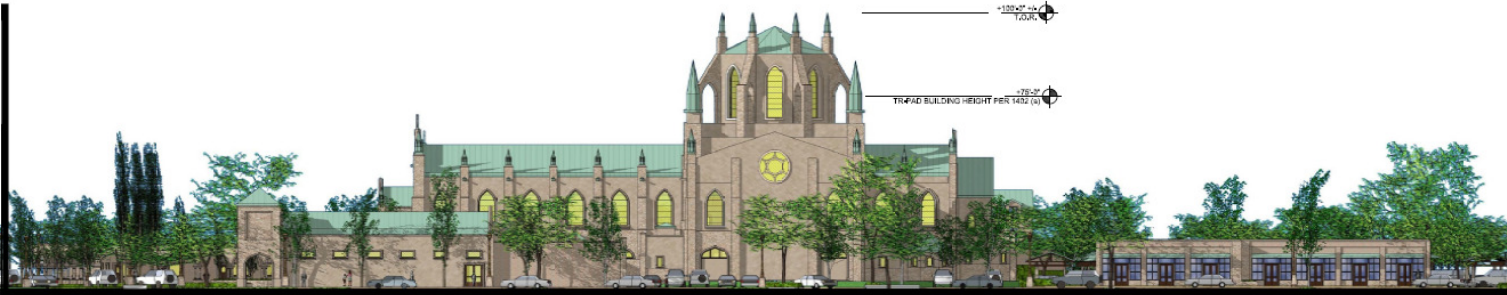
ALL DESIGNS AND DRAWINGS ARE  
© LITURGICAL ENVIRONS PC 2012

Job Number  
2011-OLGM-03

Date  
14 May 2012

Drawing Number  
**SPR.9c**





North Elevation



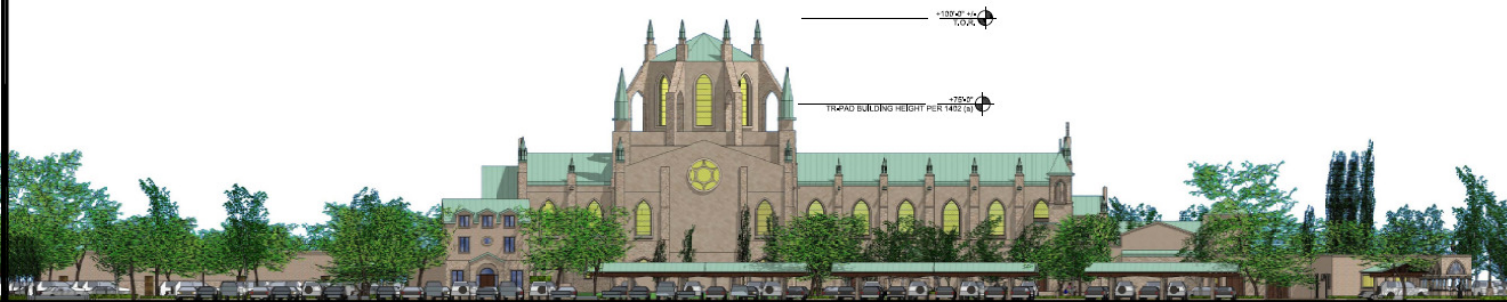
3/64" = 1' - 0"



East Elevation



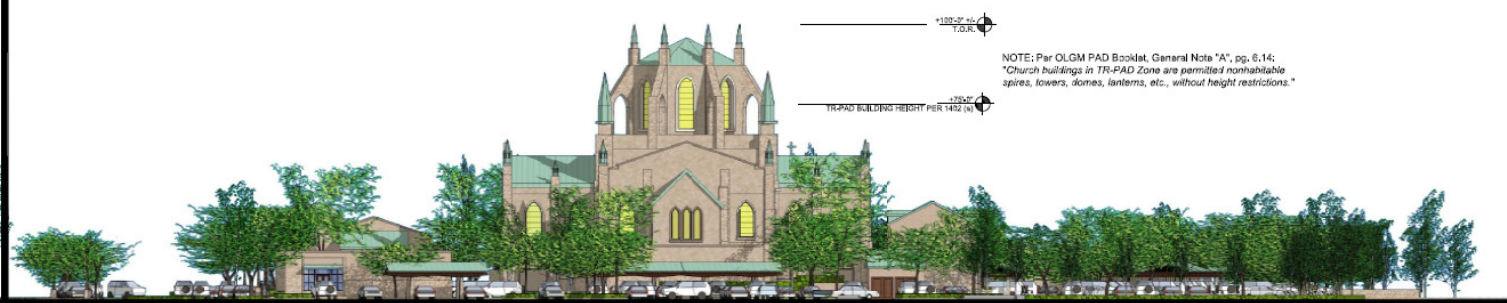
3/64" = 1' - 0"



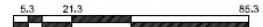
South Elevation



3/64" = 1' - 0"



West Elevation



3/64" = 1' - 0"

NOTE: Per OLG M PAD Booklet, General Note "A", pg. 6.14:  
 "Church buildings in TR-PAD Zone are permitted nonhabitable  
 spires, towers, domes, lanterns, etc., without height restrictions."



Liturgical Environments PC  
 1402 South 47th Place  
 Phoenix Arizona 85044  
 Office: 480.763.8767  
 Fax: 480.763.8767  
 Email: steve@liturgicalenviro.com  
 Website: liturgicalenviro.com

**SITE PLAN REVIEW for**  
**Our Lady of Grace Catholic Church**  
 SW Corner of Gunsomoke & Cow Path, Maricopa AZ, 85138  
 Our Lady of Grace Roman Catholic Parish - Maricopa



Drawing Title  
**Phase I & Phase 2**

ALL DESIGNS AND DRAWINGS ARE  
 © LITURGICAL ENVIRONMENTS PC 2012

Job Number  
**2011-OLGM-03**

Date  
**14 May 2012**

Drawing Number  
**SPR.10c**