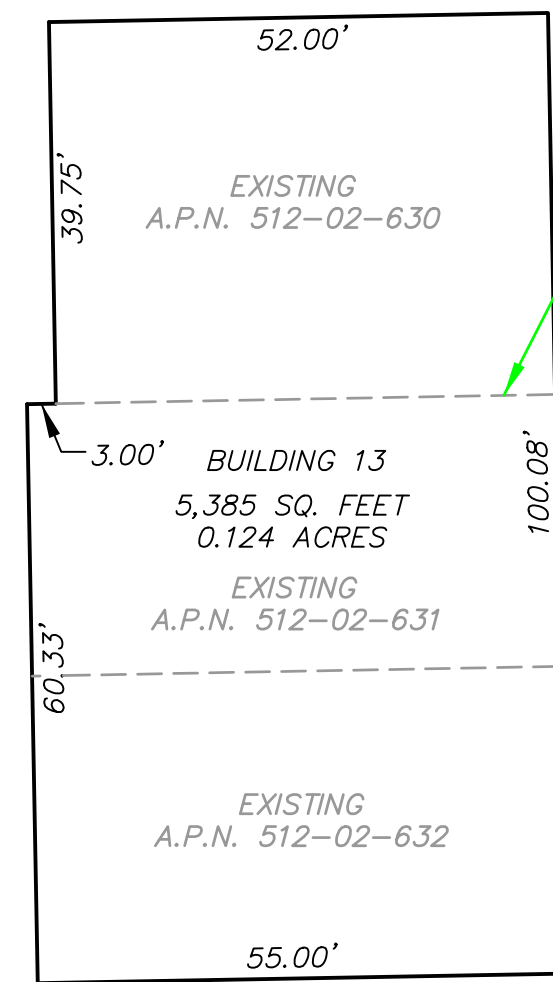


LEGEND

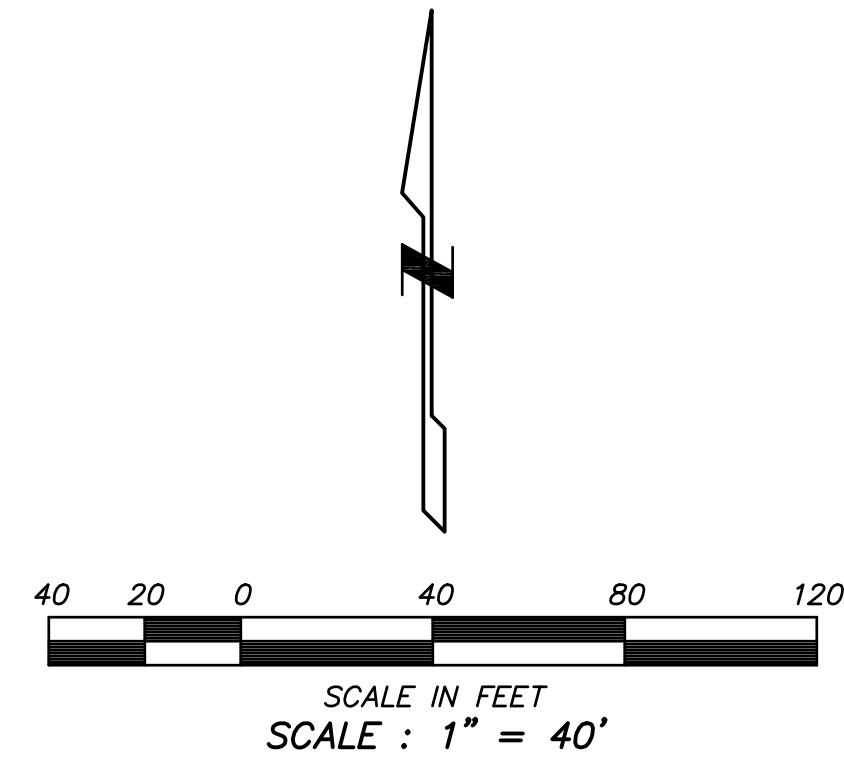
- BOUNDARY LINE
- - - CENTER LINE OR MONUMENT LINE
- ▨ CONCRETE SURFACE
- ▨ 24 INCH VERTICAL CURB & GUTTER
- ▨ 6 INCH CONCRETE CURB
- ▨ INDICATES DRIVEWAY (MEANS OF ACCESS)
- ▨ WALL
- ⊗ INDICATES BOUNDARY CORNER NOTHING FOUND OR SET
- ⊕ FOUND 1/2" CAPPED REBAR STAMPED "ONEILL 17403"
- ⊕ FOUND 1/2" CAPPED REBAR WITH ILLEGIBLE STAMP
- ⊕ FOUND 1/2" REBAR WITH NO IDENTIFICATION
- ⊕ FOUND 2" ALUMINUM CAP IN POTHOLE STAMPED "32222" (1.3" DOWN)
- ⊕ FOUND 3" CITY OF MARICOPA BRASS CAL FLUSH STAMPED "33851"
- ⊕ FOUND 3" CITY OF MARICOPA BRASS CAP FLUSH
- ⊕ CALCULATED POSITION NO MONUMENT FOUND OR SET
- ⊕ SPRINKLER HOOK-UP (FIRE DEPARTMENT)
- ⊕ BACK FLOW PREVENTER
- ⊕ FIRE HYDRANT
- ⊕ GUARD POST OR GATE POST
- ⊕ HANDICAPPED SPACE
- ⊕ LIGHT POLE
- ⊕ PEDESTRIAN ACCESS RAMP
- A.P.N. ASSESSORS PARCEL NUMBER
- P.C.R. PINAL COUNTY RECORDS
- R/W RIGHT OF WAY
- BK. BOOK
- CAB. CABINET
- DKT. DOCKET
- E ELECTRICAL ROOM
- F FIRE ROOM
- PG. PAGE
- SLD. SLIDE
- (TYP.) TYPICAL
- (R) RECORD PER DESCRIPTION & 2008-074725, P.C.R.
- (M) MEASURED

DETAIL

NOT TO SCALE

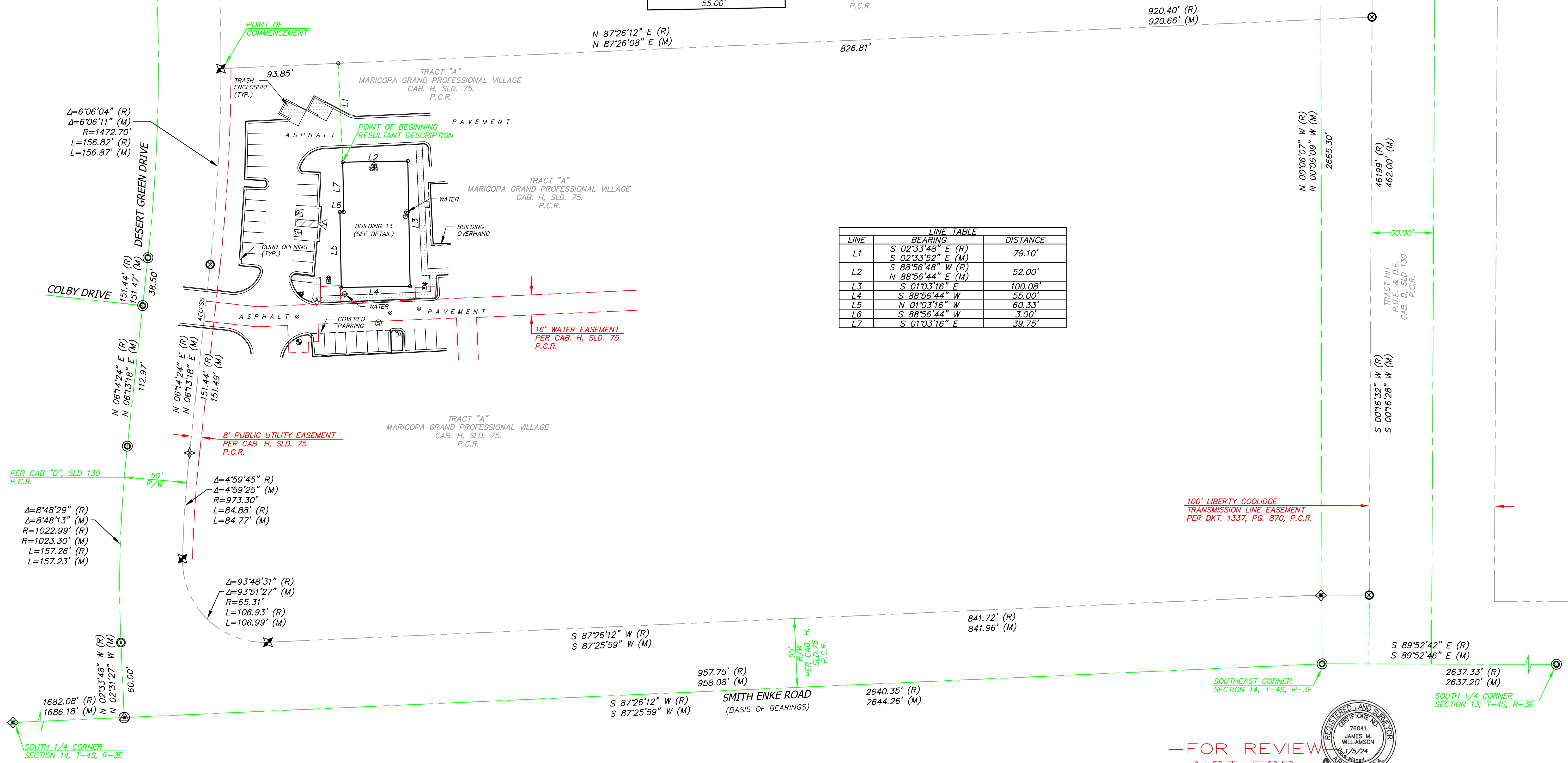


TRACY "D"
RANCHO EL DORADO PHASE II
CAB D, SLD 130,
P.C.R.

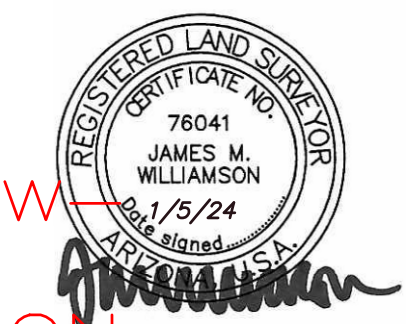


EAST 1/4 CORNER
SECTION 14, T-4S, R-6E

LINE	BEARING	DISTANCE
L1	S 02°33'48" E (R) S 02°33'52" E (M)	79.10'
L2	S 88°56'48" W (R) N 88°56'44" E (M)	52.00'
L3	S 01°03'16" E	100.08'
L4	S 88°56'44" W	55.00'
L5	N 01°03'16" W	60.33'
L6	S 88°56'44" W	3.00'
L7	S 01°03'16" E	39.75'



—FOR REVIEW—
NOT FOR
CONSTRUCTION
OR RECORDING



REPLAT FOR MARICOPA GRAND PROFESSIONAL VILLAGE
"UNITS 130-132 BUILDING 13"
41600 W. SMITH ENKE ROAD, MARICOPA, AZ 85138

2122 W. Lone Cactus Drive, Suite 11
Phoenix, AZ 85027
623-869-0223 (office) 623-869-0726 (fax)
www.superiorsurveying.com
info@superiorsurveying.com

