



DISCLAIMER
THESE PLANS ARE COPYRIGHTED AND ARE SUBJECT TO COPYRIGHT PROTECTION AS AN "ARCHITECTURAL WORK" UNDER SEC. 102 OF THE COPYRIGHT ACT, 17 U.S.C. AS AMENDED DECEMBER 1990 AND KNOWN AS ARCHITECTURAL WORKS COPYRIGHT PROTECTION ACT OF 1990. THE PROTECTION INCLUDES BUT IS NOT LIMITED TO THE OVERALL FORM AS WELL AS THE ARRANGEMENT AND COMPOSITION OF SPACES AND ELEMENTS OF THE DESIGN. UNDER SUCH PROTECTION, UNAUTHORIZED USE OF THESE PLANS CAN LEGALLY RESULT IN THE CESSATION OF CONSTRUCTION OR BUILDINGS BEING SEIZED AND/OR MONETARY COMPENSATION TO COTTON ARCHITECTURE + DESIGN LLC.

PROJECT INFORMATION

U-HAUL
U-HAUL OF MARICOPA
40455 HONEYCUTT ROAD
MARICOPA, AZ 85138

PROJECT #: 24015

ISSUE
DRP SUBMISSION

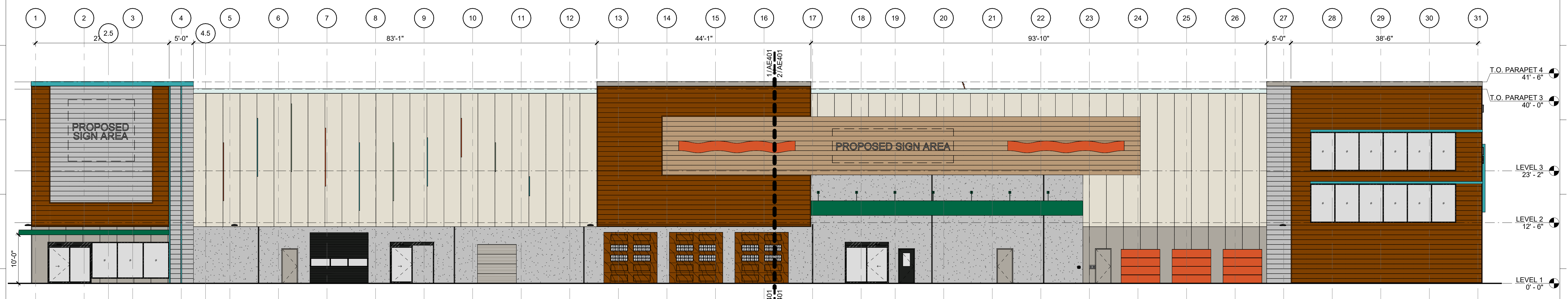
ISSUE DATE
07/19/2024

ISSUE REVISIONS

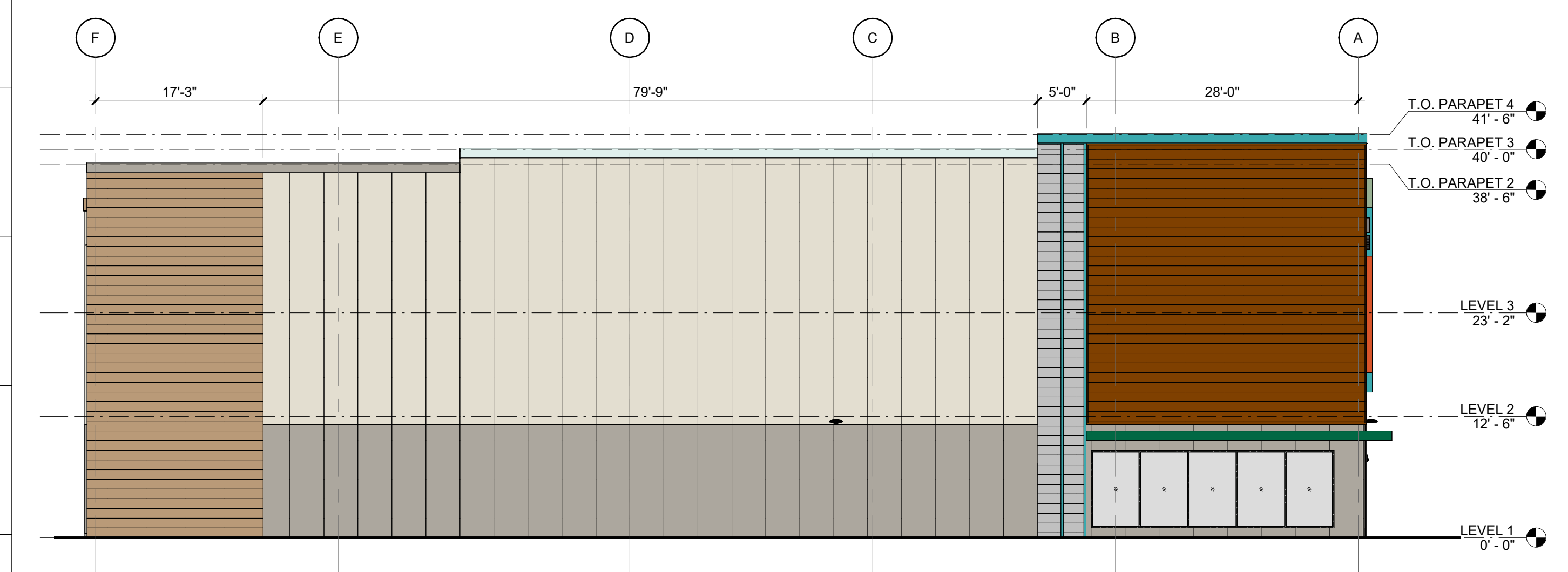
#	Date	Description

SHEET NAME
OVERALL PRELIMINARY EXTERIOR ELEVATIONS

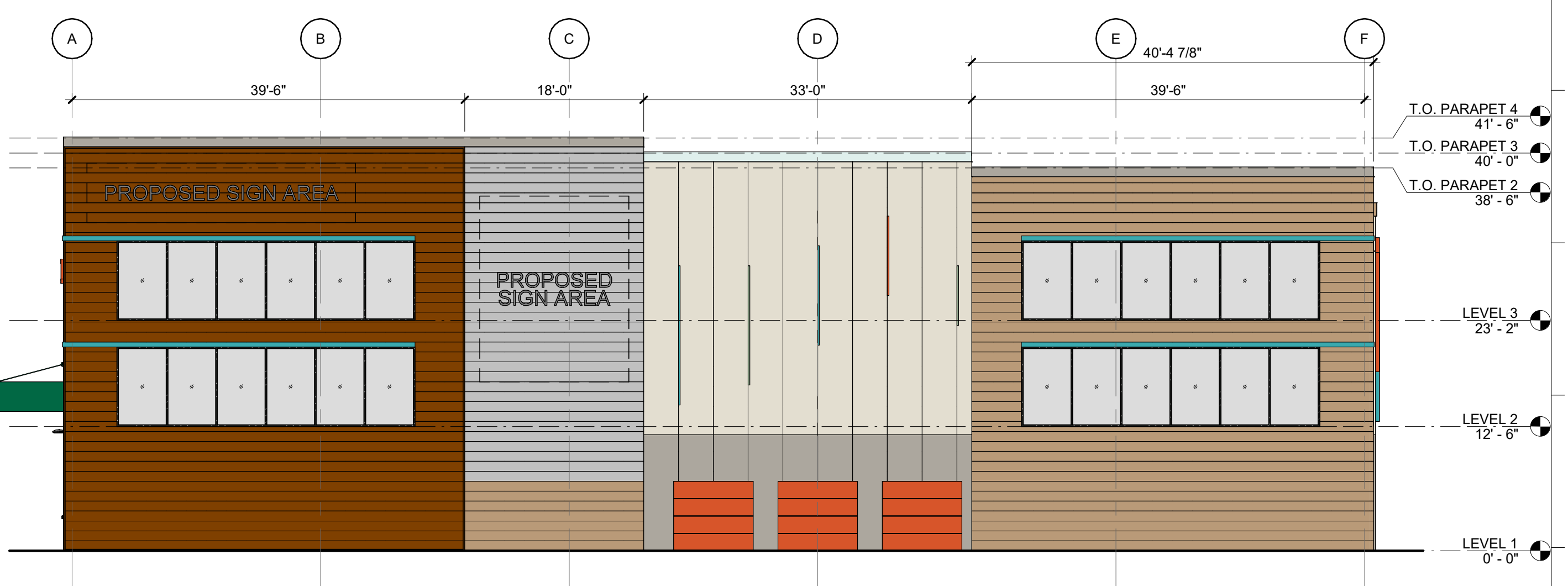
AE400



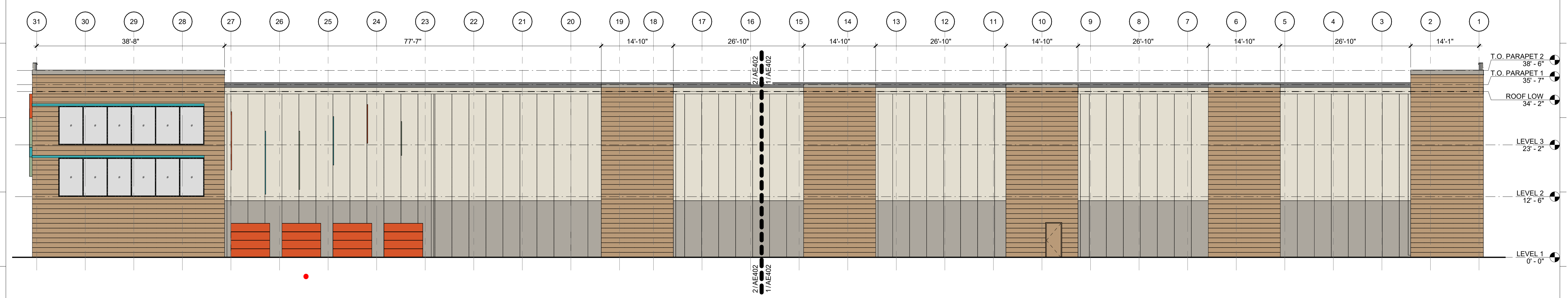
1 EAST ELEVATION - OVERALL
AE400
3/32" = 1'-0"
0'-0" 8'-0" 16'-0" 32'-0"



2 SOUTH ELEVATION - OVERALL
AE400
3/32" = 1'-0"
0'-0" 8'-0" 16'-0" 32'-0"



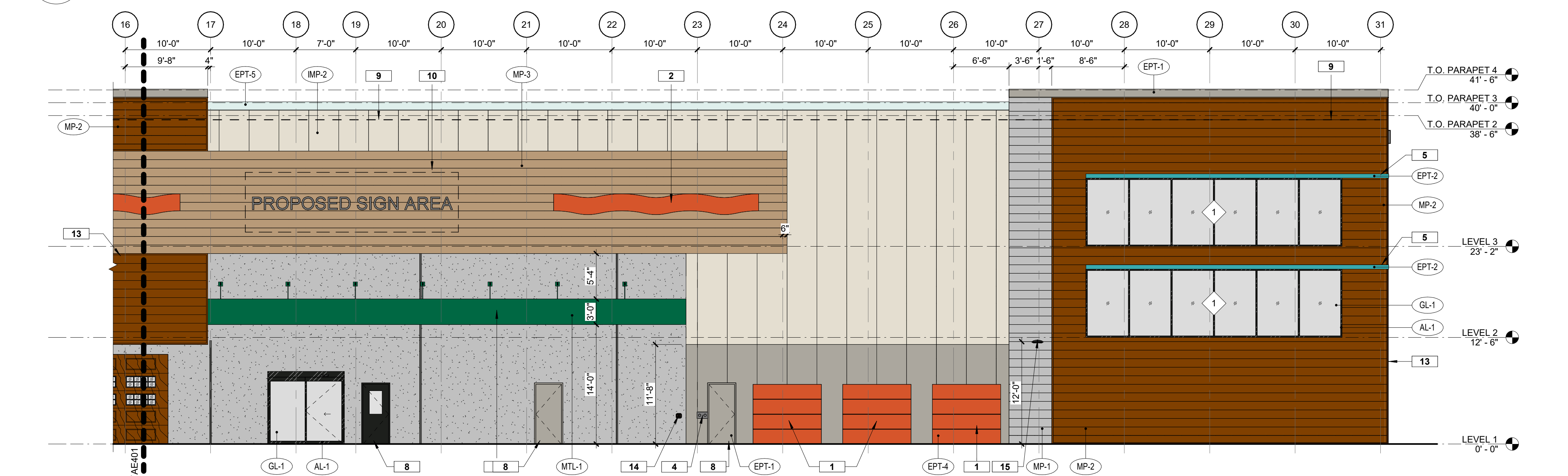
3 NORTH ELEVATION - OVERALL
AE400
3/32" = 1'-0"
0'-0" 8'-0" 16'-0" 32'-0"



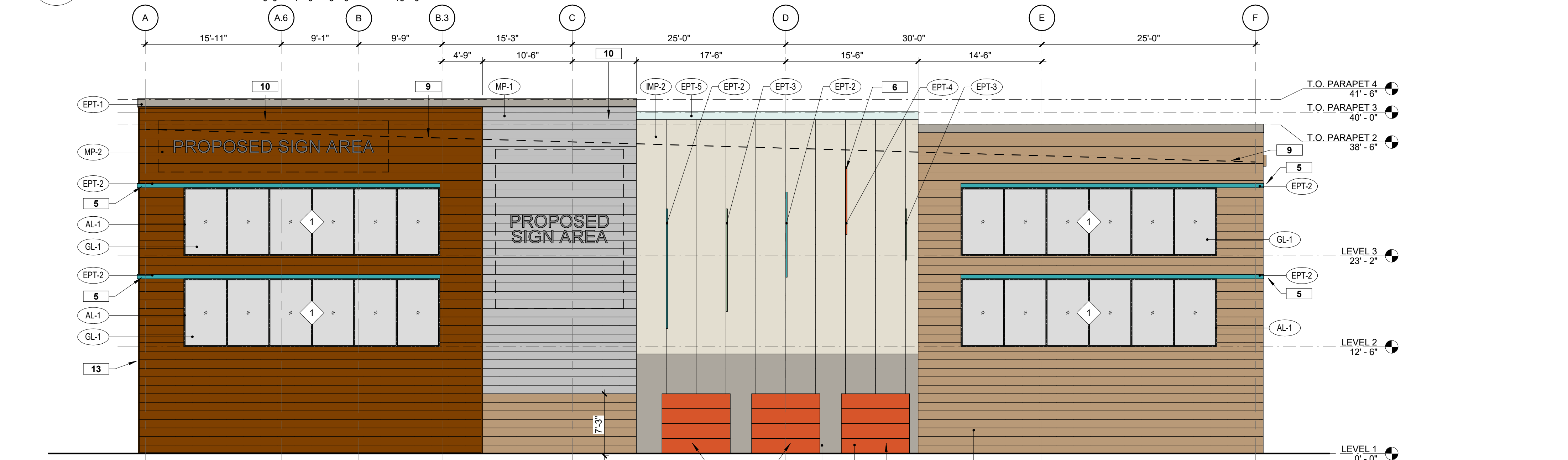
4 WEST ELEVATION - OVERALL
AE400
3/32" = 1'-0"
0'-0" 8'-0" 16'-0" 32'-0"



1 EAST ELEVATION - SECTOR A
AE401 1/8" = 1'-0"



2 EAST ELEVATION - SECTOR B
AE401 1/8" = 1'-0"



3 NORTH ELEVATION
AE401 1/8" = 1'-0"

BUILDING ELEVATION NOTES

- A. SOLID MASONRY WALLS AND GATES EQUAL TO, OR GREATER THAN, THE HIGHEST POINT ON THE MECHANICAL EQUIPMENT SHALL SCREEN ALL GROUND MOUNTED MECHANICAL EQUIPMENT
- B. SIGNS REQUIRE SEPARATE PERMIT
- C. SEE WINDOW ELEVATIONS ON SHEET AE600 FOR WINDOW AND STOREFRONT DIMENSIONS AND GLAZING TYPES

REFERENCE KEYNOTES

- 1 FAUX LOCKER DOOR
- 2 DECORATIVE BRAND WAVE
- 3 CANOPY
- 4 FIRE DEPARTMENT CONNECTION, REFERENCE CIVIL
- 5 CANOPY
- 6 9" DEEP LYRICAL ARTICULATED DESIGN ELEMENT
- 7 12" H METAL TRIM
- 8 HM DOOR AND FRAME
- 9 ROOF LINE, 38'-0" TO HIGHEST LEVEL OF ROOF SURFACE
- 10 EXTERIOR BUILDING SIGNAGE (TO BE COMPLETED BY SEPARATE SUBMITTAL AND PERMITTING)
- 11 INSULATED OVERHEAD SECTIONAL DOOR
- 12 OVERHEAD DOORS
- 13 2" TRIM ON SIDES OF FAUX WOOD PANELS
- 14 KNOX BOX EMERGENCY KEY
- 15 WALL MOUNTED DECORATIVE LIGHT FIXTURE, REFERENCE ELECTRICAL

MATERIAL LEGEND

- AL-1**
PRODUCT: ALUMINUM STOREFRONT
MFR: ARGADIA
FINISH: ANODIZED ALUMINUM
COLOR: BLACK AB-8
- EPT-1**
PRODUCT: EXTERIOR GRADE FLAT TYPICAL
MFR: SHERWIN WILLIAMS
LOCATIONS: EXTERIOR METAL AREAS, DOORS, ETC
COLOR: SW 7017 DORIAN GRAY
- EPT-2**
PRODUCT: EXTERIOR GRADE FLAT TYPICAL
MFR: SHERWIN WILLIAMS
LOCATIONS: METAL ACCENT ELEMENTS
COLOR: SW 6767 AQUARIUM
- EPT-3**
PRODUCT: EXTERIOR GRADE FLAT TYPICAL
MFR: SHERWIN WILLIAMS
LOCATIONS: METAL ACCENT ELEMENTS
COLOR: SW 6451 NURTURE GREEN
- EPT-4**
PRODUCT: EXTERIOR GRADE FLAT TYPICAL
MFR: SHERWIN WILLIAMS
LOCATIONS: METAL ACCENT ELEMENTS
COLOR: SW 6884 OBSTINATE ORANGE
- EPT-5**
PRODUCT: EXTERIOR GRADE FLAT TYPICAL
MFR: BEHR
LOCATIONS: METAL COPINGS
COLOR: POLAR WHITE
- EPT-6**
PRODUCT: EXTERIOR GRADE FLAT TYPICAL
MFR: BENJAMIN MOORE
LOCATIONS: EXTERIOR HM DOORS
COLOR: SADDLE TAN
- GL-1**
PRODUCT: STOREFRONT GLAZING
MFR: VITRO (BASIS OF DESIGN)
LOCATIONS: EXTERIOR GLAZING
COLOR: SOLARBAN 90 (2) STARPHIRE + STARPHIRE
- IMP-1**
PRODUCT: INSULATED METAL PANEL - ISOLERIN IM
MFR: ATAS
FINISH: TROWELED EMBOSSED
COLOR: COLOR MATCH SW 7017 DORIAN GRAY
- IMP-2**
PRODUCT: INSULATED METAL PANEL - ISOLERIN IM
MFR: ATAS
FINISH: TROWELED EMBOSSED
COLOR: SANDSTONE
- MP-1**
PRODUCT: FW-120-2 HORIZONTAL PANELS
MFR: MBCI
FINISH: EMBOSSED (WITH BEADS)
COLOR: GALVALUME
- MP-2**
PRODUCT: INSULATED METAL PANEL
MFR: ATAS
COLOR: WOODLAND SERIES WALNUT
- MP-3**
PRODUCT: FW-120-2 HORIZONTAL PANELS
MFR: MBCI
FINISH: EMBOSSED (WITH BEADS)
COLOR: SADDLE TAN
- MTL-1**
PRODUCT: MOULEZE II FASCIA PANEL
MFR: BUTLER
LOCATIONS: CANOPIES
COLOR: U-HAUL GREEN
- TILT-1**
PRODUCT: CONCRETE TILT PANEL
FINISH: BROOM FINISHED CONCRETE
LOCATIONS: GENERAL FIELD COLOR TILT



DISCLAIMER
THESE PLANS ARE COPYRIGHTED AND ARE SUBJECT TO COPYRIGHT PROTECTION AS AN "ARCHITECTURAL WORK" UNDER SEC. 102 OF THE COPYRIGHT ACT, 17 U.S.C. AS AMENDED DECEMBER 1990 AND KNOWN AS ARCHITECTURAL WORKS COPYRIGHT PROTECTION ACT OF 1990. THE PROTECTION INCLUDES BUT IS NOT LIMITED TO THE OVERALL FORM AS WELL AS THE ARRANGEMENT AND COMPOSITION OF SPACES AND ELEMENTS OF THE DESIGN. UNDER SUCH PROTECTION, UNAUTHORIZED USE OF THESE PLANS CAN LEGALLY RESULT IN THE CESSATION OF CONSTRUCTION OR BUILDINGS BEING SEIZED AND/OR MONETARY COMPENSATION TO COTTON ARCHITECTURE + DESIGN LLC.

PROJECT INFORMATION
U-HAUL
U-HAUL OF MARICOPA
40455 HONEYCUTT ROAD
MARICOPA, AZ 85138

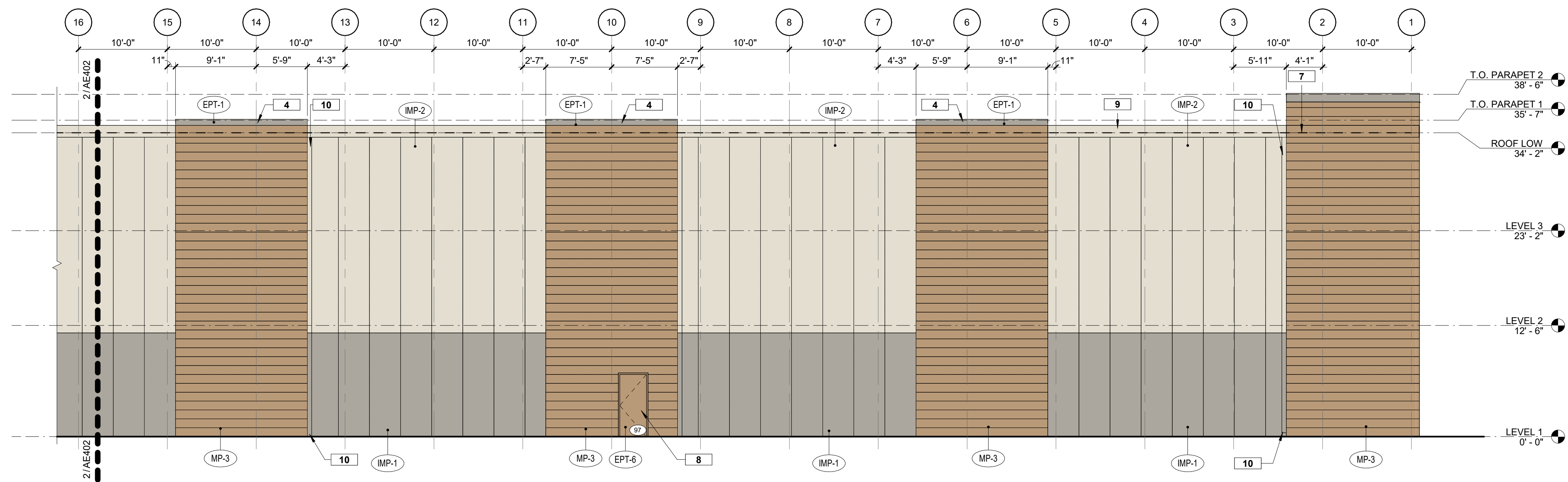
PROJECT #: 24015
ISSUE
DRP SUBMISSION

ISSUE DATE
07/19/2024

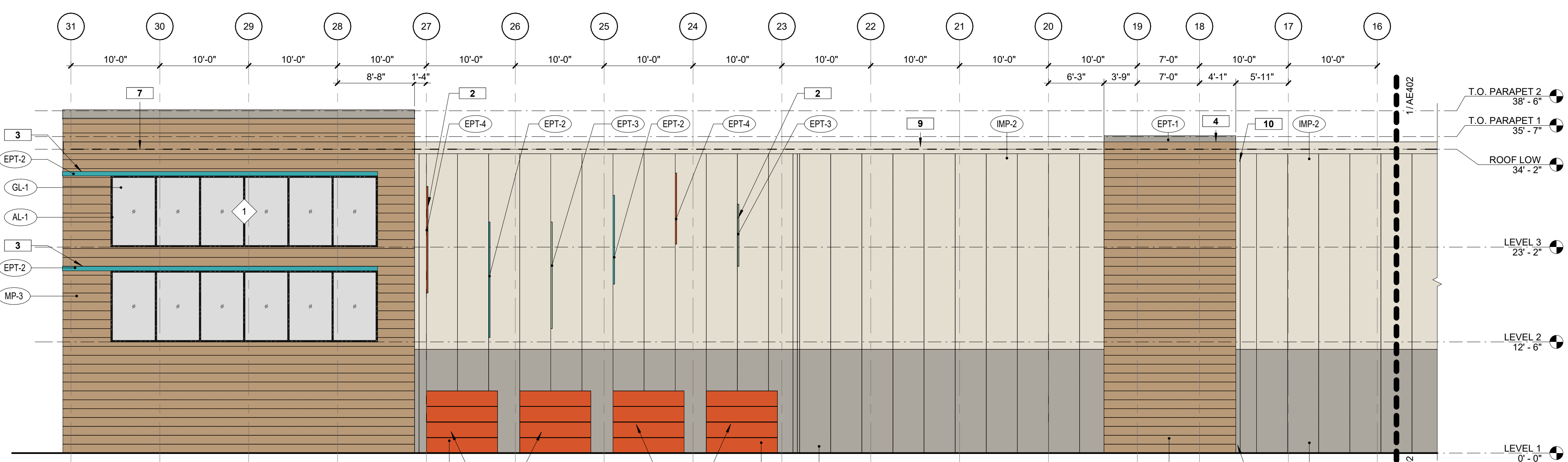
ISSUE REVISIONS

#	Date	Description
---	------	-------------

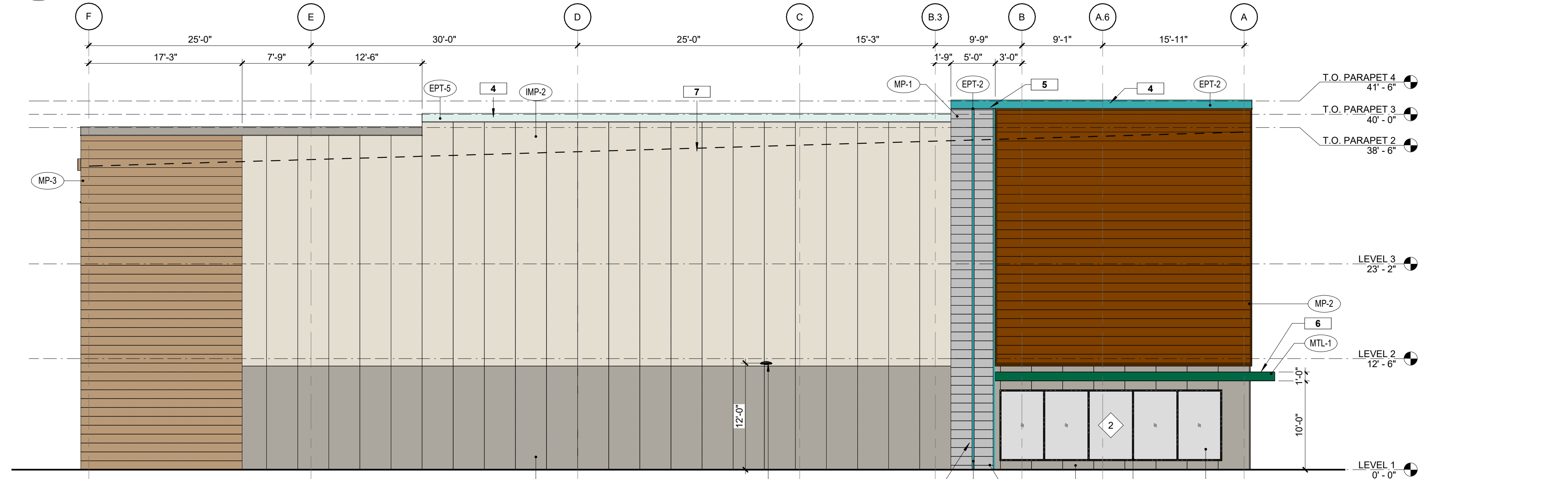
SHEET NAME
EXTERIOR ELEVATIONS - BUILDING A SECTORS



1 WEST ELEVATION - SECTOR A
 AE402 1/8" = 1'-0"
 0'-0" 4'-0" 8'-0" 16'-0"



2 WEST ELEVATION - SECTOR B
 AE402 1/8" = 1'-0"
 0'-0" 4'-0" 8'-0" 16'-0"



3 SOUTH ELEVATION
 AE402 1/8" = 1'-0"
 0'-0" 4'-0" 8'-0" 16'-0"

BUILDING ELEVATION NOTES

- A. SOLID MASONRY WALLS AND GATES EQUAL TO, OR GREATER THAN, THE HIGHEST POINT ON THE MECHANICAL EQUIPMENT SHALL SCREEN ALL GROUND MOUNTED MECHANICAL EQUIPMENT
- B. SIGNS REQUIRE SEPARATE PERMIT
- C. SEE WINDOW ELEVATIONS ON SHEET AE600 FOR WINDOW AND STOREFRONT DIMENSIONS AND GLAZING TYPES

REFERENCE KEYNOTES

- 1 FAUX LOCKER DOOR
- 2 9" DEEP LYRICAL ARTICULATED DESIGN ELEMENT
- 3 CANOPY
- 4 12" H METAL TRIM
- 5 RIGID WALL II MFN121 & MFN 160 HORIZONTAL PANELING MATERIAL DEPTH, TYP
- 6 CANOPY
- 7 ROOF LINE, 38'-0" TO HIGHEST LEVEL OF ROOF SURFACE
- 8 HM DOOR AND FRAME
- 9 METAL SCUPPER SCREEN, PAINT TO MATCH ADJACENT METAL PANEL COLOR
- 10 METAL DOWNSPOUT, PAINT TO MATCH ADJACENT METAL PANEL COLOR
- 11 WALL MOUNTED DECORATIVE LIGHT FIXTURE, REFERENCE ELECTRICAL

MATERIAL LEGEND

- AL-1**
 PRODUCT: ALUMINUM STOREFRONT
 MFR: ARCADIA
 FINISH: ANODIZED ALUMINUM
 COLOR: BLACK AB-8
- EPT-1**
 PRODUCT: EXTERIOR GRADE FLAT TYPICAL
 MFR: SHERWIN WILLIAMS
 LOCATIONS: EXTERIOR METAL AREAS, DOORS, ETC
 COLOR: SW 7017 DORIAN GRAY
- EPT-2**
 PRODUCT: EXTERIOR GRADE FLAT TYPICAL
 MFR: SHERWIN WILLIAMS
 LOCATIONS: METAL ACCENT ELEMENTS
 COLOR: SW 6767 AQUARIUM
- EPT-3**
 PRODUCT: EXTERIOR GRADE FLAT TYPICAL
 MFR: SHERWIN WILLIAMS
 LOCATIONS: METAL ACCENT ELEMENTS
 COLOR: SW 6451 NURTURE GREEN
- EPT-4**
 PRODUCT: EXTERIOR GRADE FLAT TYPICAL
 MFR: SHERWIN WILLIAMS
 LOCATIONS: METAL ACCENT ELEMENTS
 COLOR: SW 6884 OBSTINATE ORANGE
- EPT-5**
 PRODUCT: EXTERIOR GRADE FLAT TYPICAL
 MFR: BEHR
 LOCATIONS: METAL COPINGS
 COLOR: POLAR WHITE
- EPT-6**
 PRODUCT: EXTERIOR GRADE FLAT TYPICAL
 MFR: BENJAMIN MOORE
 LOCATIONS: EXTERIOR HM DOORS
 COLOR: SADDLE TAN
- GL-1**
 PRODUCT: STOREFRONT GLAZING
 MFR: VITRO (BASIS OF DESIGN)
 LOCATIONS: EXTERIOR GLAZING
 COLOR: SOLARBAN 90 (2) STARPHIRE + STARPHIRE
- IMP-1**
 PRODUCT: INSULATED METAL PANEL - ISOLERIN IM
 MFR: ATAS
 FINISH: TROWELED EMBOSSED
 COLOR: COLOR MATCH SW 7017 DORIAN GRAY
- IMP-2**
 PRODUCT: INSULATED METAL PANEL - ISOLERIN IM
 MFR: ATAS
 FINISH: TROWELED EMBOSSED
 COLOR: SANDSTONE
- MP-1**
 PRODUCT: FW-120-2 HORIZONTAL PANELS
 MFR: MBCI
 FINISH: EMBOSSED (WITH BEADS)
 COLOR: GALVALUME
- MP-2**
 PRODUCT: INSULATED METAL PANEL
 MFR: ATAS
 COLOR: WOODLAND SERIES WALNUT
- MP-3**
 PRODUCT: FW-120-2 HORIZONTAL PANELS
 MFR: MBCI
 FINISH: EMBOSSED (WITH BEADS)
 COLOR: SADDLE TAN
- MTL-1**
 PRODUCT: MOULEZZE II FASCIA PANEL
 MFR: BUTLER
 LOCATIONS: CANOPIES
 COLOR: U-HAUL GREEN
- TILT-1**
 PRODUCT: CONCRETE TILT PANEL
 FINISH: BROOM FINISHED CONCRETE
 LOCATIONS: GENERAL FIELD COLOR TILT



DISCLAIMER
 THESE PLANS ARE COPYRIGHTED AND ARE SUBJECT TO COPYRIGHT PROTECTION AS AN ARCHITECTURAL WORK UNDER SEC. 102 OF THE COPYRIGHT ACT, 17 U.S.C. AS AMENDED DECEMBER 1990 AND KNOWN AS ARCHITECTURAL WORKS COPYRIGHT PROTECTION ACT OF 1990. THE PROTECTION INCLUDES BUT IS NOT LIMITED TO THE OVERALL FORM AS WELL AS THE ARRANGEMENT AND COMPOSITION OF SPACES AND ELEMENTS OF THE DESIGN. UNDER SUCH PROTECTION, UNAUTHORIZED USE OF THESE PLANS CAN LEGALLY RESULT IN THE CESSATION OF CONSTRUCTION OR BUILDINGS BEING SEIZED AND/OR MONETARY COMPENSATION TO COTTON ARCHITECTURE + DESIGN LLC.

PROJECT INFORMATION
 U-HAUL
U-HAUL OF MARICOPA
 40455 HONEYCUTT ROAD
 MARICOPA, AZ 85138

PROJECT #: 24015
 ISSUE
 DRP SUBMISSION
 ISSUE DATE
 07/19/2024

ISSUE REVISIONS

#	Date	Description

SHEET NAME
 EXTERIOR ELEVATIONS - BUILDING A SECTORS

BUILDING ELEVATION NOTES

- SOLID MASONRY WALLS AND GATES EQUAL TO, OR GREATER THAN, THE HIGHEST POINT ON THE MECHANICAL EQUIPMENT SHALL SCREEN ALL GROUND MOUNTED MECHANICAL EQUIPMENT
- SIGNS REQUIRE SEPARATE PERMIT
- SEE WINDOW ELEVATIONS ON SHEET AE600 FOR WINDOW AND STOREFRONT DIMENSIONS AND GLAZING TYPES

REFERENCE KEYNOTES

- 9" DEEP LYRICAL ARTICULATED DESIGN ELEMENT
- HM DOOR AND FRAME
- FAUX LOCKER DOOR
- OVERHEAD DOORS
- 12" H METAL TRIM
- WALL MOUNTED DECORATIVE LIGHT FIXTURE, REFERENCE ELECTRICAL

MATERIAL LEGEND

- AL-1**
PRODUCT: ALUMINUM STOREFRONT
MFR: ARCADIA
FINISH: ANODIZED ALUMINUM
COLOR: BLACK AB-8
- EPT-1**
PRODUCT: EXTERIOR GRADE FLAT TYPICAL
MFR: SHERWIN WILLIAMS
LOCATIONS: EXTERIOR METAL AREAS, DOORS, ETC
COLOR: SW 7017 DORIAN GRAY
- EPT-2**
PRODUCT: EXTERIOR GRADE FLAT TYPICAL
MFR: SHERWIN WILLIAMS
LOCATIONS: METAL ACCENT ELEMENTS
COLOR: SW 6767 AQUARIUM
- EPT-3**
PRODUCT: EXTERIOR GRADE FLAT TYPICAL
MFR: SHERWIN WILLIAMS
LOCATIONS: METAL ACCENT ELEMENTS
COLOR: SW 6451 NURTURE GREEN
- EPT-4**
PRODUCT: EXTERIOR GRADE FLAT TYPICAL
MFR: SHERWIN WILLIAMS
LOCATIONS: METAL ACCENT ELEMENTS
COLOR: SW 6884 OBSTINATE ORANGE
- EPT-5**
PRODUCT: EXTERIOR GRADE FLAT TYPICAL
MFR: BEHR
LOCATIONS: METAL COPINGS
COLOR: POLAR WHITE
- EPT-6**
PRODUCT: EXTERIOR GRADE FLAT TYPICAL
MFR: BENJAMIN MOORE
LOCATIONS: EXTERIOR HM DOORS
COLOR: SADDLE TAN
- GL-1**
PRODUCT: STOREFRONT GLAZING
MFR: VITRO (BASIS OF DESIGN)
LOCATIONS: EXTERIOR GLAZING
COLOR: SOLARBAN 90 (2) STARPHIRE + STARPHIRE
- IMP-1**
PRODUCT: INSULATED METAL PANEL - ISOLERIN IM
MFR: ATAS
FINISH: TROWELED EMBOSSED
COLOR: COLOR MATCH SW 7017 DORIAN GRAY
- IMP-2**
PRODUCT: INSULATED METAL PANEL - ISOLERIN IM
MFR: ATAS
FINISH: TROWELED EMBOSSED
COLOR: SANDSTONE
- MP-1**
PRODUCT: FW-120-2 HORIZONTAL PANELS
MFR: MBCI
FINISH: EMBOSSED (WITH BEADS)
COLOR: GALVALUME
- MP-2**
PRODUCT: INSULATED METAL PANEL
MFR: ATAS
COLOR: WOODLAND SERIES WALNUT
- MP-3**
PRODUCT: FW-120-2 HORIZONTAL PANELS
MFR: MBCI
FINISH: EMBOSSED (WITH BEADS)
COLOR: SADDLE TAN
- MTL-1**
PRODUCT: MOULEZE II FASCIA PANEL
MFR: BUTLER
LOCATIONS: CANOPIES
COLOR: U-HAUL GREEN
- TILT-1**
PRODUCT: CONCRETE TILT PANEL
FINISH: BROOM FINISHED CONCRETE
LOCATIONS: GENERAL FIELD COLOR TILT



DISCLAIMER
THESE PLANS ARE COPYRIGHTED AND ARE SUBJECT TO COPYRIGHT PROTECTION AS AN "ARCHITECTURAL WORK" UNDER SEC. 102 OF THE COPYRIGHT ACT, 17 U.S.C. AS AMENDED DECEMBER 1990 AND KNOWN AS ARCHITECTURAL WORKS COPYRIGHT PROTECTION ACT OF 1990. THE PROTECTION INCLUDES BUT IS NOT LIMITED TO THE OVERALL FORM AS WELL AS THE ARRANGEMENT AND COMPOSITION OF SPACES AND ELEMENTS OF THE DESIGN. UNAUTHORIZED USE OF THESE PLANS CAN LEGALLY RESULT IN THE CESSATION OF CONSTRUCTION OR BUILDINGS BEING SEIZED AND/OR MONETARY COMPENSATION TO COTTON ARCHITECTURE + DESIGN LLC.

PROJECT INFORMATION

U-HAUL
U-HAUL OF MARICOPA
40455 HONEYCUTT ROAD
MARICOPA, AZ 85138

PROJECT #: 24015

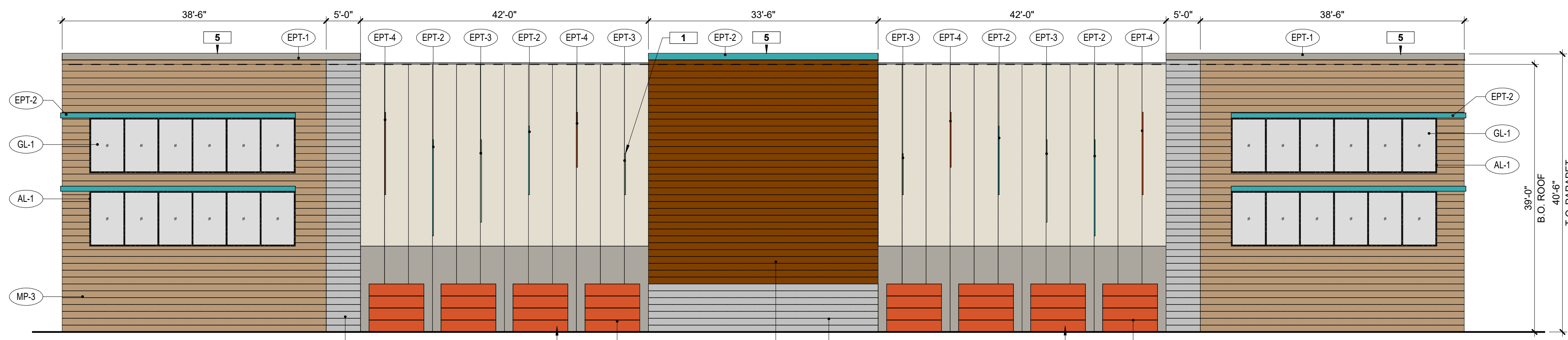
ISSUE
DRP SUBMISSION

ISSUE DATE
07/19/2024

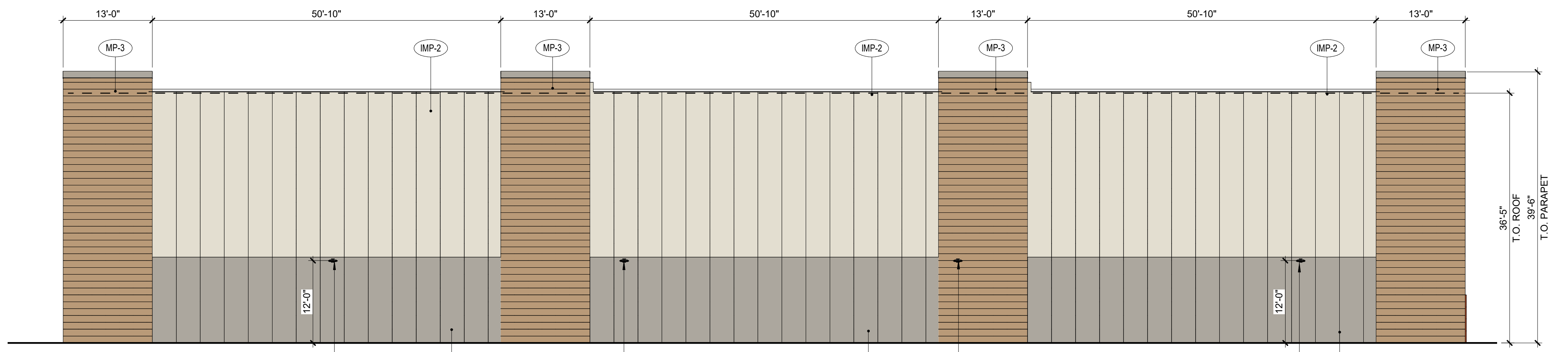
ISSUE REVISIONS

#	Date	Description

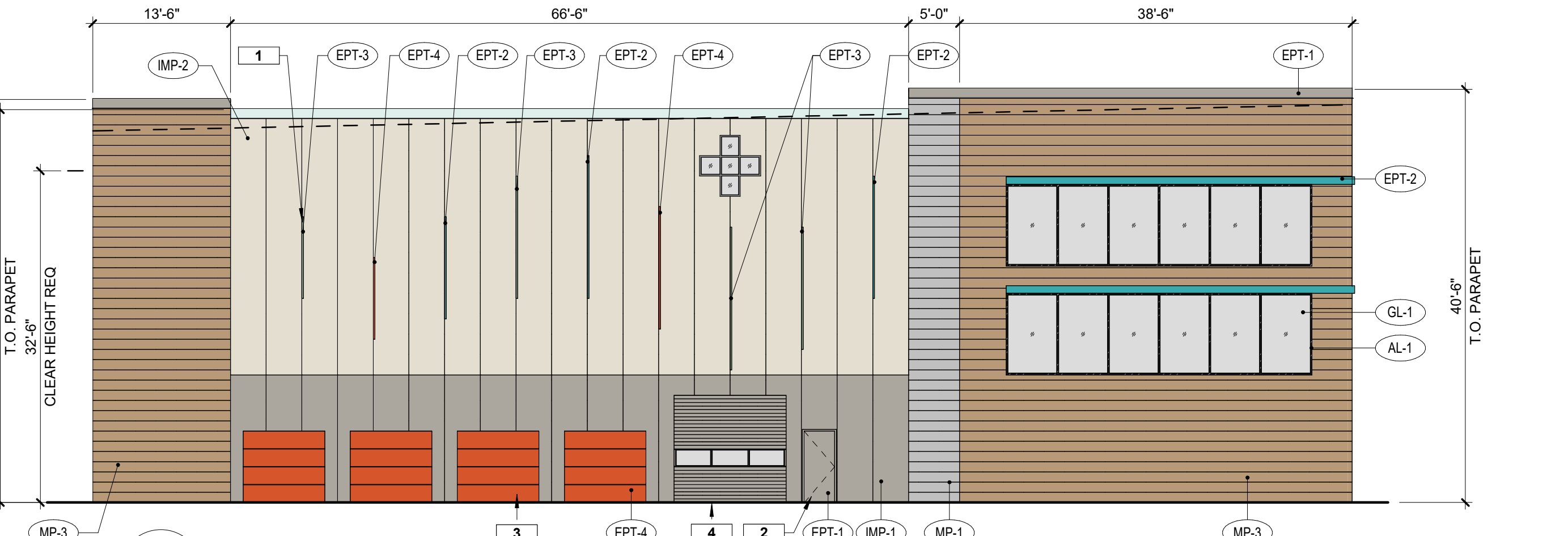
SHEET NAME
EXTERIOR ELEVATIONS - BUILDING B



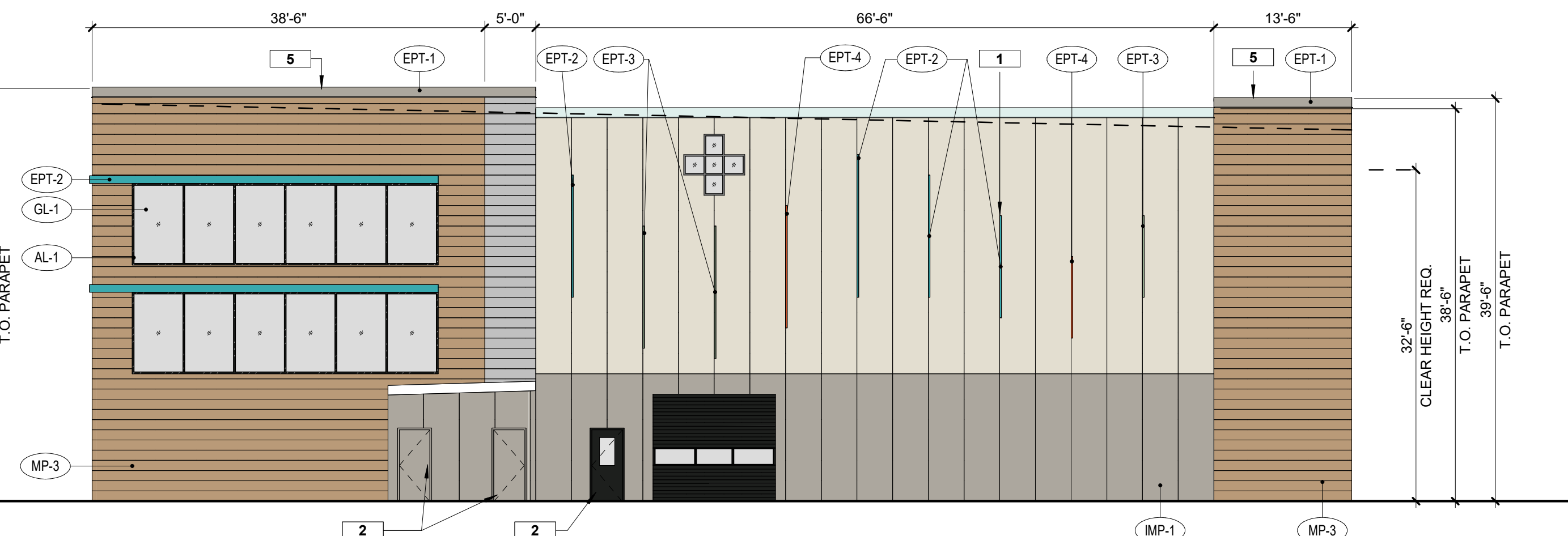
1 BUILDING B - NORTH
AE403 3/32" = 1'-0"



2 BUILDING B - SOUTH
AE403 3/32" = 1'-0"



3 BUILDING B - EAST
AE403 3/32" = 1'-0"



4 BUILDING B - WEST
AE403 3/32" = 1'-0"