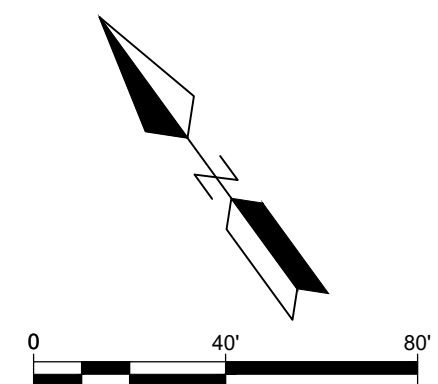
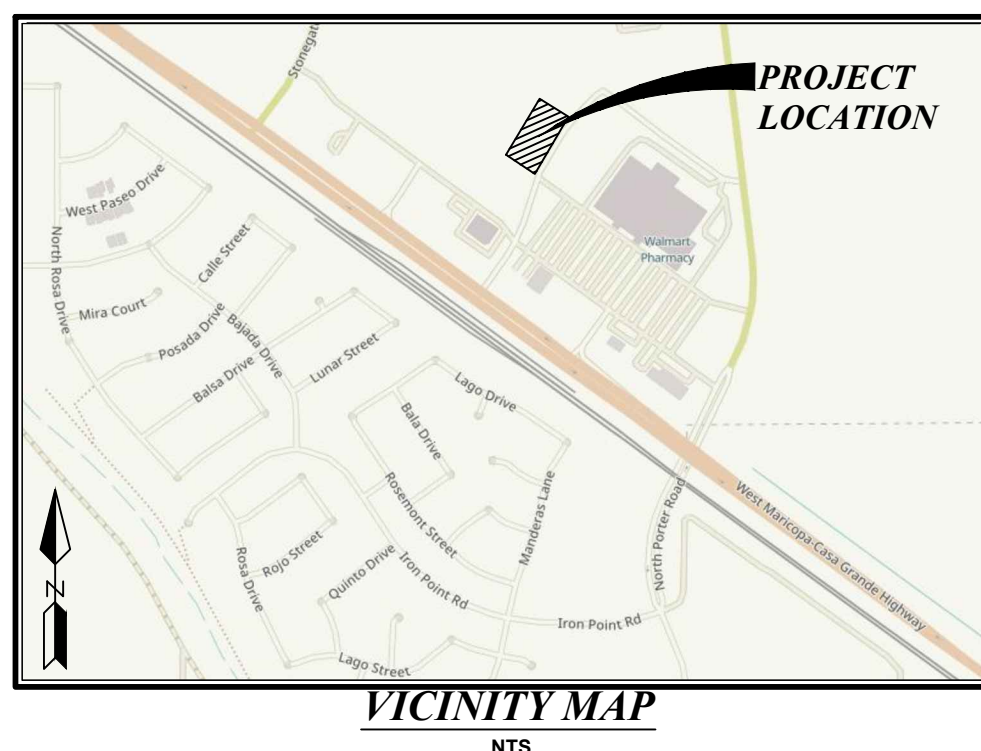
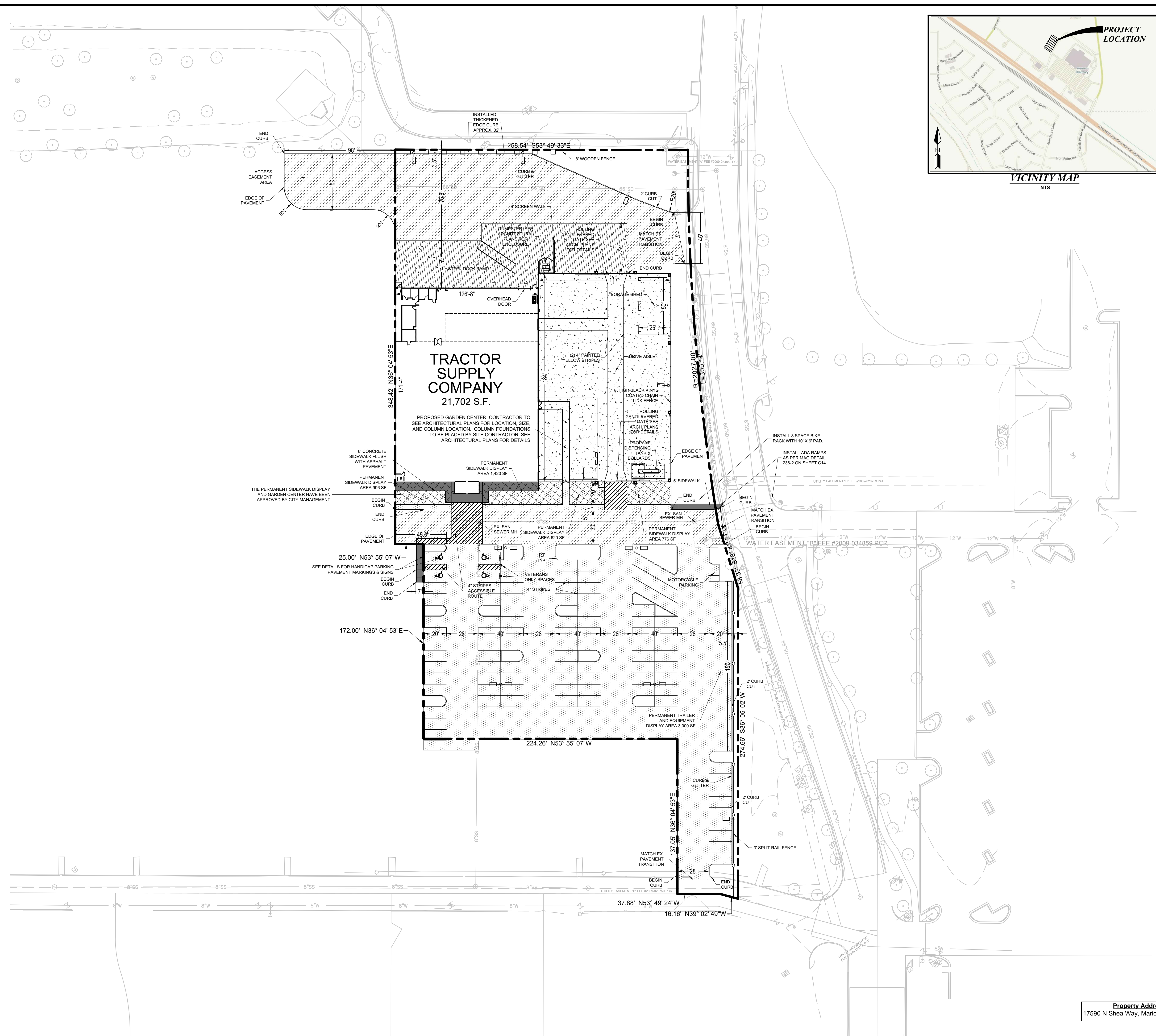


FILE NAME: I:\projects\03_204_001_17590 N Shea Way, Maricopa, AZ\032022_211319.dwg DATE PLOTTED: 11/29/2022 2:13:50 PM



LEGEND

| | |
|----------------------------------|-----------|
| BOUNDARY LINE | --- |
| EASEMENT LINE | ---- |
| PARKING / BUILDING SETBACK LINE | - - - - - |
| PROPOSED 8' CHAIN LINK FENCE | - - - - - |
| PROPOSED 8' WOODEN FENCE | □ |
| PROPOSED 3' SPLIT RAIL FENCE | + |
| PROPOSED SIGN | + |
| PROPOSED LIGHT POLE & FIXTURE(S) | + |
| SIDEWALK PAVEMENT | ▒ |
| HEAVY DUTY ASPHALT PAVEMENT | ▒ |
| LIGHT DUTY ASPHALT PAVEMENT | ▒ |
| FOD CONCRETE PAVEMENT | ▒ |
| HEAVY DUTY CONCRETE PAVEMENT | ▒ |
| PERMANENT SIDEWALK DISPLAY AREA | ▒ |

- NOTE:**
PAVEMENT TO BE CONSTRUCTED TO THE APPLICABLE PAVEMENT SECTIONS IN THE CONSTRUCTION DETAILS
- NOTES:**
- LIGHTING LOCATIONS ARE SHOWN FOR ILLUSTRATIVE PURPOSES ONLY. REFER TO ELECTRICAL PLANS TO CONFIRM LOCATIONS AND FOR PHOTOMETRIC VALUES.
 - STRIPING ON CONCRETE TO BE YELLOW AND STRIPING ON ASPHALT TO BE WHITE.
 - DIMENSIONS ARE SHOWN TO FACE OF CURB.
 - DETECTABLE WARNING SURFACES (TRUNCATED DOMES) SHALL CONTRAST VISUALLY WITH ADJACENT WALKING SURFACES - EITHER LIGHT-ON-DARK, OR DARK-ON-LIGHT.
 - CONFIRM VERTICAL AND HORIZONTAL CLEARANCE WITH ELECTRIC COMPANY PRIOR TO PLACEMENT.

- PARKING LOT PAINT SPECIFICATIONS - 15 MIL APPLICATION (0.015 INCH THICKNESS):**
- NEW PAVEMENT SURFACE TO CURE FOR A PERIOD OF NOT LESS THAN 14 DAYS BEFORE APPLICATION OF MARKING MATERIALS.
 - REMOVE ALL DIRT, GRAVEL, DEBRIS, VEGETATION, OR OTHER MISCELLANEOUS OBJECTS FROM THE SURFACE WITH A BROOM TRUCK OR EQUIVALENT RIGOROUS METHOD. PROVIDE A CLEAN, DUST-FREE AND COMPLETELY DRY SURFACE FOR PAINT APPLICATION. DO NOT APPLY PAINT OVER EXISTING TAPE MARKINGS.
 - CONFIRM & RECORD PROPER AIR AND SURFACE TEMPERATURES OF 55° AND RISING AND LESS THAN 95°. IF THE SURFACE TEMPERATURE IS NOT WITHIN THE TEMPERATURE RANGE OR IF THE PAINT APPLICATION IS DONE UNDER ADVERSE CONDITIONS (AS DETERMINED BY THE CONSTRUCTION PROJECT MANAGER) SUCH AS ABOVE 75% HUMIDITY, NIGHT STRIPING, ETC. IN ORDER TO MEET TSC OPENING SCHEDULE, CONTRACTOR TO RE-SCHEDULE AND COMPLETE SURFACE STRIPING UNDER PROPER CONDITIONS A MINIMUM OF 30 DAYS PRIOR TO THE EXPIRATION OF THE (1) ONE YEAR CONSTRUCTION WARRANTY.
 - PROVIDE A 15 MIL THICK 4" WIDE CONTINUOUS STRIPE WHERE AND IN THE COLOR INDICATED, MINIMUM OF (2) TWO COATS.
 - PROVIDE PRIMER AND SEALER TO BE APPLIED PER THE MANUFACTURER'S RECOMMENDATIONS ON ALL CONCRETE SURFACES AND ON ASPHALT SURFACES THAT ARE MORE THAN TWO YEARS OLD. OXIDIZED AND/OR HAVE AGGREGATE EXPOSED.
 - SEE ARCHITECTURAL PLANS FOR VETERAN AND ON-LINE ORDER PARKING SPACES.

PARKING SPACE CALCULATION

| | | |
|--|------------------------|----|
| REQUIRED: | | |
| 1 SPACE PER 250 SQ FT OF BLDG | 21,702 SF / 250 SF = | 87 |
| 1 SPACE PER 5,000 SQ FT OF OUTDOOR DISPLAY | 28,340 SF / 5,000 SF = | 6 |
| TOTAL SPACES REQUIRED: | | 93 |
| PROVIDED: | | |
| REGULAR SPACES: | | 86 |
| MOTORCYCLE SPACES: | | 3 |
| ADA SPACES (INCLUDING 1 VAN ACCESSIBLE) | | |
| PER §208.2 OF THE U.S. ACCESS BOARD ADA ACCESSIBILITY STANDARDS: | | 4 |
| TOTAL SPACES PROVIDED: | | 93 |

AREA SUMMARY

| |
|--------------------------|
| 16,607.00 SF OPEN AREA |
| 148,372.42 SF TOTAL AREA |
| 11.19% OPEN AREA |

SITE DATA

| | |
|------------------|--|
| PARCEL #: | 510120510 |
| ZONING: | LIGHT INDUSTRY & WAREHOUSE (CI-1) |
| BUILDING SIZE: | 21,702 SF |
| BUILDING HEIGHT: | 21'4" FRONT MASONRY WALL / 30'8" GABLE FACADE |
| GROSS ACRE: | 15.35 ACRES |
| NET ACRE: | 3.41 ACRES |
| SETBACKS: | |
| FRONT YARD: | 15FT |
| SIDE YARD: | NONE |
| REAR YARD: | 10FT |
| | 1:1 SETBACK FOR THE FENCED OUTDOOR DISPLAY (8' HIGH FENCE) |

Property Address:
17590 N Shea Way, Maricopa, AZ 85138

PREPARED BY:
SEA
13747 MONTFORT DR
SUITE 275
DALLAS, TX 75240
214-678-9968

PREPARED FOR:
STNL MARICOPA, LLC

8150 CORPORATE PARK DRIVE,
SUITE 110
CINCINNATI, OH 45242
(630) 464-9008

PRELIMINARY - FOR REVIEW ONLY
THESE DOCUMENTS ARE FOR DESIGN REVIEW AND NOT INTENDED FOR CONSTRUCTION, BIDDING OR PERMIT PURPOSES. THEY WERE PREPARED BY, OR UNDER SUPERVISION OF:
MATT GAUNITT 73377 11/29/22
TYPE OR PRINT NAME PE# DATE

PROJECT NOTES:

BENCHMARKS:
COUNTY OF PINAL DATUM (NAV088)
NORTH QUARTER CORNER, SECTION 35,
TOWNSHIP 4 SOUTH, RANGE 3 EAST
C&SRM, BEING A FOUND REBAR WITHOUT CAP
1.0 FOOT DOWN
ELEVATION = 1188.43

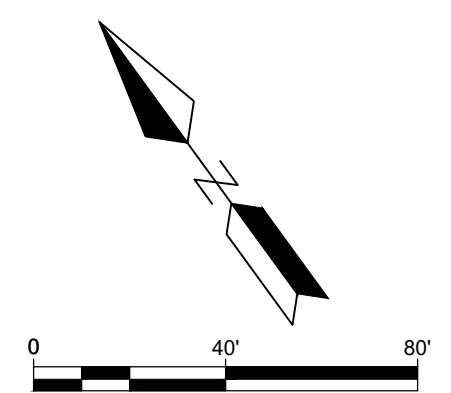
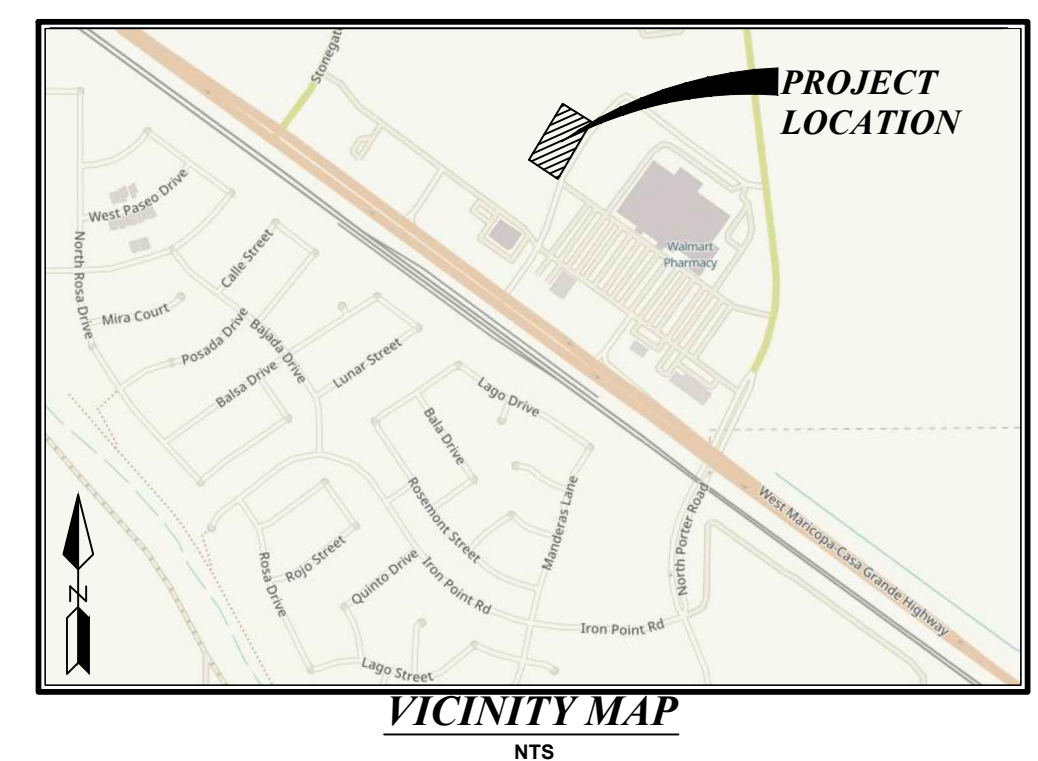
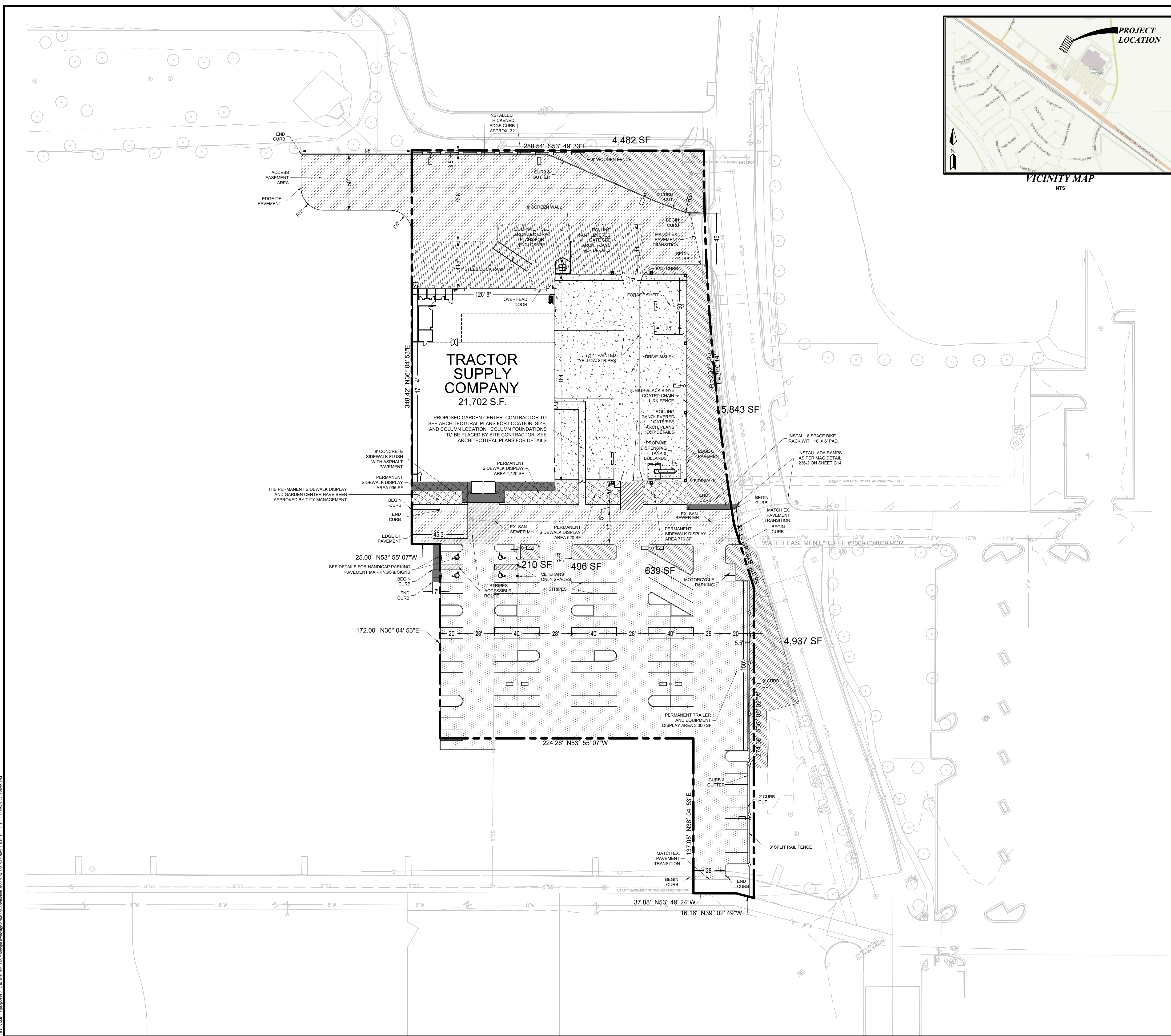
REVISIONS / ISSUANCES

| No. | DATE | BY | DESCRIPTION |
|-----|------|----|-------------|
| | | | |
| | | | |

TRACTOR SUPPLY COMPANY
TSC-MARICOPA, AZ

SITE PLAN

| | |
|-----------------|------------|
| PROJECT NUMBER: | 03.204.026 |
| DATE: | 11/29/2022 |
| DRAFTED BY: | LMG |
| DESIGNED BY: | EMFO |
| CHECKED BY: | MAG |
| SCALE: | 1"=40' |
| SHEET No. | C4 |
| OF 19 SHEETS | |



LEGEND

| | |
|---------------------------------|-----------|
| BOUNDARY LINE | --- |
| EASEMENT LINE | - - - - |
| PARKING / BUILDING SETBACK LINE | - · - · - |
| PROPOSED 8' CHAIN LINK FENCE | —○—○—○—○— |
| PROPOSED 8' WOODEN FENCE | —□—□—□—□— |
| PROPOSED 3' SPLIT RAIL FENCE | —+—+—+—+— |
| PROPOSED SIGN POLE & FIXTURE(S) | + |
| PROPOSED SIGN | + |
| SIDEWALK PAVEMENT | ▨ |
| HEAVY DUTY ASPHALT PAVEMENT | ▩ |
| LIGHT DUTY ASPHALT PAVEMENT | ▧ |
| FOD CONCRETE PAVEMENT | ▦ |
| HEAVY DUTY CONCRETE PAVEMENT | ▥ |
| PERMANENT SIDEWALK DISPLAY AREA | ▣ |

NOTE:
PAVEMENT TO BE CONSTRUCTED TO THE APPLICABLE PAVEMENT SECTIONS IN THE CONSTRUCTION DETAILS

NOTES:

1. LIGHTING LOCATIONS ARE SHOWN FOR ILLUSTRATIVE PURPOSES ONLY. REFER TO ELECTRICAL PLANS TO CONFIRM LOCATIONS AND FOR PHOTOMETRIC VALUES.
2. STRIPING ON CONCRETE TO BE YELLOW AND STRIPING ON ASPHALT TO BE WHITE.
3. DIMENSIONS ARE SHOWN TO FACE OF CURB.
4. DETECTABLE WARNING SURFACES (TRUNCATED DOMES) SHALL CONTRAST VISUALLY WITH ADJACENT WALKING SURFACES - EITHER LIGHT-ON-DARK, OR DARK-ON-LIGHT.
5. CONFIRM VERTICAL AND HORIZONTAL CLEARANCE WITH ELECTRIC COMPANY PRIOR TO PLACEMENT.

PARKING LOT PAINT SPECIFICATIONS - 15 MIL APPLICATION (0.015 INCH THICKNESS):

1. NEW PAVEMENT SURFACE TO CURE FOR A PERIOD OF NOT LESS THAN 14 DAYS BEFORE APPLICATION OF MARKING MATERIALS.
2. REMOVE ALL DIRT, GRAVEL, DEBRIS, VEGETATION, OR OTHER MISCELLANEOUS OBJECTS FROM THE SURFACE WITH A BROOM, TRUCK OR EQUIVALENT RIGOROUS METHOD. PROVIDE A CLEAN, DUST-FREE AND COMPLETELY DRY SURFACE FOR PAINT APPLICATION. DO NOT APPLY PAINT OVER EXISTING TAPE MARKINGS.
3. CONFIRM & RECORD PROPER AIR AND SURFACE TEMPERATURES OF 55° AND RISING AND LESS THAN 95°. IF THE SURFACE TEMPERATURE IS NOT WITHIN THE TEMPERATURE RANGE OR IF THE PAINT APPLICATION IS DONE UNDER ADVERSE CONDITIONS (AS DETERMINED BY THE CONSTRUCTION PROJECT MANAGER) SUCH AS ABOVE 75% HUMIDITY, NIGHT STRIPING, ETC. IN ORDER TO MEET TSC OPENING SCHEDULE, CONTRACTOR TO RE-SCHEDULE AND COMPLETE SURFACE STRIPING UNDER PROPER CONDITIONS A MINIMUM OF 30 DAYS PRIOR TO THE EXPIRATION OF THE (1) ONE YEAR CONSTRUCTION WARRANTY.
4. PROVIDE A 15 MIL THICK 4" WIDE CONTINUOUS STRIPE WHERE AND IN THE COLOR INDICATED, MINIMUM OF (2) TWO COATS.
5. PROVIDE PRIMER AND SEALER TO BE APPLIED PER THE MANUFACTURER'S RECOMMENDATIONS ON ALL CONCRETE SURFACES AND ON ASPHALT SURFACES THAT ARE MORE THAN TWO YEARS OLD. OXIDIZED AND/OR HAVE AGGREGATE EXPOSED.
6. SEE ARCHITECTURAL PLANS FOR VETERAN AND ON-LINE ORDER PARKING SPACES.

PARKING SPACE CALCULATION

| | |
|--|-----------|
| REQUIRED: | |
| 1 SPACE PER 250 SQ FT OF BLDG | |
| 21,702 SF/250 SF = | 87 |
| 1 SPACE PER 5,000 SQ FT OF OUTDOOR DISPLAY | |
| 28,340 SF/5,000 SF = | 6 |
| TOTAL SPACES REQUIRED: | 93 |
| PROVIDED: | |
| REGULAR SPACES: | 86 |
| MOTORCYCLE SPACES: | 3 |
| ADA SPACES (INCLUDING 1 VAN ACCESSIBLE) | |
| PER §208.2 OF THE U.S. ACCESS BOARD ADA ACCESSIBILITY STANDARDS: | 4 |
| TOTAL SPACES PROVIDED: | 93 |

AREA SUMMARY

| |
|--------------------------|
| 16,607.00 SF OPEN AREA |
| 148,372.42 SF TOTAL AREA |
| 11.19% OPEN AREA |

SITE DATA

| | |
|------------------|--|
| PARCEL #: | 510120510 |
| ZONING: | LIGHT INDUSTRY & WAREHOUSE (CI-1) |
| BUILDING SIZE: | 21,702 SF |
| BUILDING HEIGHT: | 21'4" FRONT MASONRY WALL / 30'8" GABLE FACADE |
| GROSS ACRE: | 15.35 ACRES |
| NET ACRE: | 3.41 ACRES |
| SETBACKS: | |
| FRONT YARD: | 15FT |
| SIDE YARD: | NONE |
| REAR YARD: | 10FT |
| | 1:1 SETBACK FOR THE FENCED OUTDOOR DISPLAY (8' HIGH FENCE) |

PREPARED BY:
SEA
13747 MONTFORT DR
SUITE 275
DALLAS, TX 75240
214-678-9968

PREPARED FOR:
STNL MARICOPA, LLC

8150 CORPORATE PARK DRIVE,
SUITE 110
CINCINNATI, OH 45242
(630) 464-9008

PRELIMINARY - FOR REVIEW ONLY
THESE DOCUMENTS ARE FOR DESIGN REVIEW AND NOT INTENDED FOR CONSTRUCTION, BIDDING OR PERMIT PURPOSES. THEY WERE PREPARED BY, OR UNDER SUPERVISION OF:
MATT GAUNITT 73377 11/29/22
TYPE OR PRINT NAME PE# DATE

PROJECT NOTES:

BENCHMARKS:
COUNTY OF PINAL DATUM (NAVDB8)
NORTH QUARTER CORNER, SECTION 35,
TOWNSHIP 4 SOUTH, RANGE 3 EAST
C&SRM, BEING A FOUND REBAR WITHOUT CAP
1.0 FOOT DOWN
ELEVATION = 1188.43

| REVISIONS / ISSUANCES | | | |
|-----------------------|------|----|-------------|
| No. | DATE | BY | DESCRIPTION |
| | | | |

TRACTOR SUPPLY COMPANY
TSC-MARICOPA, AZ

SITE PLAN

| | |
|-----------------|------------|
| PROJECT NUMBER: | 03.204.026 |
| DATE: | 11/29/2022 |
| DRAFTED BY: | LMG |
| DESIGNED BY: | EMFO |
| CHECKED BY: | MAG |
| SHEET No. | C4 |
| OF 19 SHEETS | |

FILE NAME: I:\projects\03_204_026\stnl-maricopa\03204026\siteplan.dwg DATE PLOTTED: 11/29/2022 2:30:39 PM