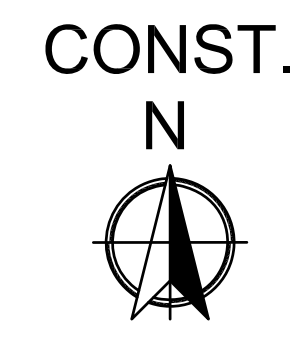
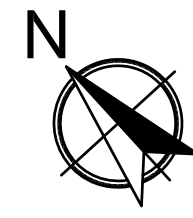


1 COLOR LANDSCAPE PLAN

CL1.1 SCALE: 1" = 20'-0"



1736 East Sunshine, Suite 417
Springfield, Missouri 65804
417.862.0558
Fax: 417.862.3265
e-mail: architect@esterlyschneider.com

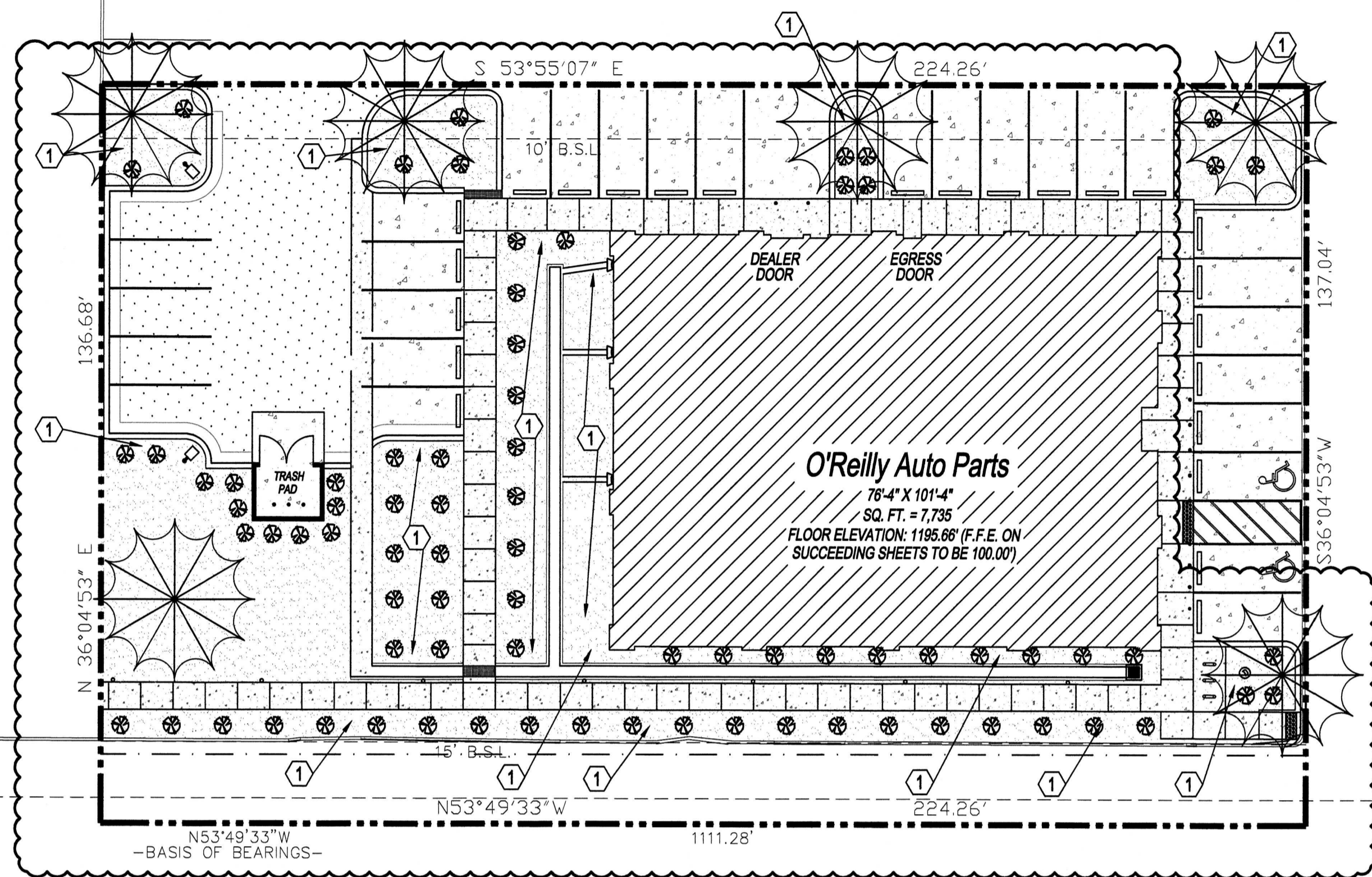
ESTERLY SCHNEIDER & ASSOCIATES, INC.
architects & planners
AIA

PROJECT:
NEW O'REILLY AUTO PARTS STORE
41910 W. MARICOPA-CASA GRANDE HWY
MARICOPA, AZ #2
COLOR LANDSCAPE PLAN

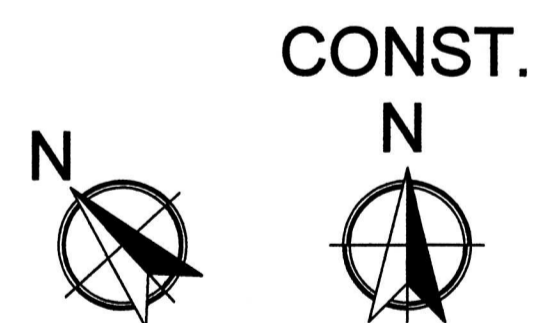
O'Reilly AUTO PARTS
CORPORATE OFFICES
233 SOUTH PATTERSON
SPRINGFIELD, MISSOURI 65802
(417) 862-2674 TELEPHONE

COMM #	4807
DATE:	6-24-24
REVISION	
DATE:	10-3-24

CL1.1



1 LANDSCAPE PLAN
 L1.1 SCALE: 1" = 20'-0"



PLANTING SCHEDULE					
REFER TO PROJECT MANUAL FOR ADDITIONAL REQUIREMENTS. ALL PLANTINGS MAY BE SUBSTITUTED DUE TO REGION OR LOCAL REQUIREMENTS IF NECESSARY.					
MARK	COMMON NAME	BOTANICAL NAME	SIZE	DETAIL	NOTES
	RED PUSH PISTACHE	PISTACIA X 'RED PUSH'	2" CALIPER MIN.	5/L1.2	WELL BRANCHED, FULL HEAD, 10' HEIGHT MIN., B & B
	WOOLLY BUTTERFLY BUSH	BUDDLEJA MARRUBIFOLJA	1 GALLON MIN.	4/L1.2	FULL PLANT

GENERAL NOTES

- (A) REFER TO PROJECT MANUAL FOR ADDITIONAL REQUIREMENTS.
- (B) SITE CONDITIONS BASED UPON SURVEY PROVIDED BY OWNER. CONTRACTOR TO FIELD VERIFY EXISTING CONDITIONS BY DETAILED INSPECTION PRIOR TO SUBMITTING BID AND BEGINNING CONSTRUCTION. NOTIFY ARCHITECT IF EXISTING CONDITIONS DEVIATE SUBSTANTIALLY FROM THOSE INDICATED HEREIN.
- (C) REFER TO CIVIL DRAWINGS FOR ADDITIONAL REQUIREMENTS. COORDINATE WORK WITH OTHER SITE RELATED DEVELOPMENT DRAWINGS.
- (D) ALL PLANTING TYPES SHALL COMPLY WITH LOCAL GOVERNING CODES AND REGULATIONS, CONFORM TO REQUIREMENTS OF PLANT LIST AND TO THE AMERICAN ASSOCIATION OF NURSERYMEN "AMERICAN STANDARD OF NURSERY STOCK" AND "HORTICULTURAL STANDARDS" AS TO SPECIES, AGE, SIZE, AND PLANTING RECOMMENDATIONS.
- (E) NO MATERIAL SUBSTITUTIONS SHALL BE MADE WITHOUT THE ARCHITECT'S PRIOR WRITTEN APPROVAL. ALTERNATE MATERIALS OF SIMILAR SIZE AND CHARACTER MAY BE CONSIDERED IF SPECIFIED PLANT MATERIALS CANNOT BE OBTAINED.
- (F) PLANT LOCATIONS ARE APPROXIMATE. ADJUST AS NECESSARY TO AVOID CONFLICTS.
- (G) PROVIDE 4" TOPSOIL AT ALL SOD, SEED AND PLANTING AREAS. GRADE SHALL BE ADJUSTED FOR SOD THICKNESS. REFER TO CIVIL SITE GRADING PLAN FOR SLOPE REQUIREMENTS.
- (H) WHEN CLAY SOIL IS ENCOUNTERED IN THE ESTABLISHED AREA OF THE LAWN OR THE INSTALLATION OF PLANT MATERIAL IT SHALL BE IMPROVED IN ACCORDANCE WITH STANDARD TRADE PRACTICE.
- (I) RE-ESTABLISH TURF IN AREAS DISTURBED BY GRADING OR UTILITY TRENCHING IN THE RIGHT-OF-WAY.
- (J) PRIOR TO INSTALLATION, GENERAL CONTRACTOR TO CONFIRM THAT LIGHT POLES, LANDSCAPING AND UTILITIES DO NOT CONFLICT WITH SIGN LOCATION SHOWN. IF ANY POTENTIAL CONFLICT IS DISCOVERED, GENERAL CONTRACTOR IS TO CONTACT OWNER'S REPRESENTATIVE BEFORE PROCEEDING WITH THE WORK.

KEY NOTES

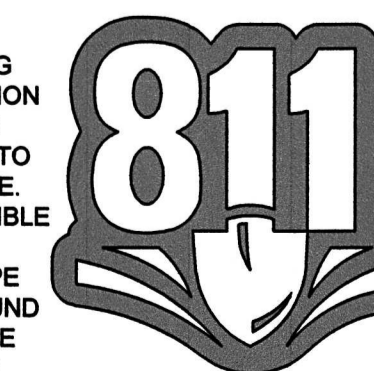
- (1) CREEK GRAVEL, REFER TO DETAIL 2/L1.2.

SYMBOLS LEGEND

NOTE: REFER TO SURVEY SHEET FOR SYMBOLS LEGEND OF EXISTING CONDITIONS.

- NEW AREA OF LANDSCAPE GRAVEL
- SHRUB PLANTING
- UNDER STORY TREE

CAUTION: INFORMATION ON THIS DRAWING CONCERNING TYPE AND LOCATION OF UNDERGROUND AND OTHER UTILITIES IS NOT GUARANTEED TO BE ACCURATE OR ALL INCLUSIVE. THE CONTRACTOR IS RESPONSIBLE FOR MAKING HIS OWN DETERMINATION AS TO THE TYPE AND LOCATION OF UNDERGROUND AND OTHER UTILITIES AS MAY BE NECESSARY TO AVOID DAMAGE THERETO.



**Know what's below
 Call before you dig.**



1736 East Sunshine, Suite 417
 Springfield, Missouri 65804
 417.862.0558

Fax: 417.862.3265
 e-mail: architect@esterylschneider.com

**ESTERYL
 SCHNEIDER &
 ASSOCIATES, INC.**
 architects & planners
 AIA

PROJECT:
NEW O'REILLY AUTO PARTS STORE
41910 W. MARICOPA-CASA GRANDE HWY
MARICOPA, AZ #2
LANDSCAPE PLAN

O'Reilly AUTO PARTS
 CORPORATE OFFICES
 233 SOUTH PATTERSON
 SPRINGFIELD, MISSOURI 65802
 (417) 862-2674 TELEPHONE

COMM #	4807
DATE:	4-12-24
REVISION	
DATE:	7-17-24
	10-3-24