

LEGAL DESCRIPTION

A PARCEL OF LAND LOCATED IN THE NORTHEAST QUARTER OF SECTION 35, TOWNSHIP 4 SOUTH RANGE 3 EAST OF THE GILA AND SALT RIVER BASE AND MERIDIAN, PINAL COUNTY, ARIZONA MORE PARTICULARLY DESCRIBED AS FOLLOWS:

COMMENCING AT THE INTERSECTION OF ALAN STEPHENS PARKWAY AND STONEGATE ROAD ACCORDING TO A MAP OF DEDICATION FOR ALAN STEPHENS PARKWAY ON FILE IN CABINET E, SLIDE 163, AND A SPECIAL WARRANTY DEED OF DEDICATION FOR STONEGATE ROAD ON FILE IN FEE NUMBER 2008-005496, IN THE OFFICE OF THE PINAL COUNTY RECORDER, PINAL COUNTY, ARIZONA;

THENCE ALONG THE MONUMENT LINE OF STONEGATE ROAD, SOUTH 19 DEGREES, 21 MINUTES, 12 SECONDS WEST, A DISTANCE OF 622.33 FEET;

THENCE DEPARTING SAID LINE, SOUTH 70 DEGREES, 38 MINUTES, 48 SECONDS EAST, A DISTANCE OF 40.00 FEET TO A POINT ON THE EAST RIGHT OF WAY LINE OF STONEGATE ROAD, ALSO BEING COINCIDENT WITH THE WEST LINE OF LOT 17, ACCORDING TO THE FINAL PLAT OF RECORD FOR "MARIKOPIA POWER CENTER THE WELLS", ON FILE AT THE OFFICE OF THE PINAL COUNTY ARIZONA RECORDER, IN CABINET H, SLIDE 53, SAID POINT BEING THE POINT OF BEGINNING;

THENCE ALONG THE WEST LINE OF LOTS 17 AND 18 OF SAID FINAL PLAT, NORTH 19 DEGREES, 21 MINUTES, 12 SECONDS EAST, A DISTANCE OF 568.32 FEET;

THENCE CONTINUE ALONG THE WESTERLY LINE OF SAID LOT 18, NORTH 63 DEGREES, 12 MINUTES, 52 SECONDS EAST, A DISTANCE OF 20.87 FEET TO THE POINT OF CURVE OF A NON TANGENT CURVE TO THE LEFT, OF WHICH THE RADIUS POINT LIES NORTH 17 DEGREES, 11 MINUTES, 08 SECONDS EAST, A RADIAL DISTANCE OF 1,440.00 FEET;

THENCE CONTINUE ALONG THE NORTH LINE OF SAID LOT 18, EASTERLY ALONG THE ARC, THROUGH A CENTRAL ANGLE OF 24 DEGREES, 01 MINUTE, 55 SECONDS, A DISTANCE OF 603.99 FEET;

THENCE CONTINUE ALONG THE NORTH LINE OF SAID LOT 18, NORTH 83 DEGREES, 09 MINUTES, 13 SECONDS EAST, A DISTANCE OF 196.23 FEET TO THE NORTHEAST CORNER OF LOT 18A ACCORDING TO A MINOR LAND DIVISION OF LOTS 18 AND 20 OF MARIKOPIA POWER CENTER WELLS ON FILE IN THE OFFICE OF THE PINAL COUNTY, ARIZONA RECORDER, IN FEE NUMBER 2020-021061;

THENCE ALONG THE EAST LINE OF SAID LOT 18A, SOUTH 06 DEGREES, 50 MINUTES, 47 SECONDS EAST, A DISTANCE OF 105.48 FEET;

THENCE CONTINUE ALONG SAID LINE, NORTH 83 DEGREES, 06 MINUTES, 13 SECONDS EAST, A DISTANCE OF 49.54 FEET;

THENCE CONTINUE ALONG SAID LINE, SOUTH 06 DEGREES, 50 MINUTES, 34 SECONDS EAST, A DISTANCE OF 632.56 FEET TO THE SOUTHEAST CORNER OF SAID LOT 18A;

THENCE ALONG THE SOUTHERLY LINE OF SAID LOT 18A, NORTH 53 DEGREES, 49 MINUTES, 33 SECONDS WEST, A DISTANCE OF 406.67 FEET TO THE NORTHEAST CORNER OF SAID LOT 17 OF SAID MARIKOPIA POWER CENTER WELLS FINAL PLAT;

THENCE ALONG THE EASTERLY LINE OF SAID LOT 17, SOUTH 36 DEGREES, 10 MINUTES, 27 SECONDS WEST, A DISTANCE OF 424.53 FEET;

THENCE CONTINUE ALONG SAID LINE, NORTH 53 DEGREES, 49 MINUTES, 33 SECONDS WEST, A DISTANCE OF 62.00 FEET;

THENCE CONTINUE ALONG SAID LINE, SOUTH 36 DEGREES, 10 MINUTES, 27 SECONDS WEST, A DISTANCE OF 75.00 FEET;

THENCE DEPARTING SAID LINE NORTH 53 DEGREES, 49 MINUTES, 33 SECONDS WEST, A DISTANCE OF 573.42 FEET TO THE POINT OF BEGINNING.

PRELIMINARY PLAT FOR VILLAS AT STONEGATE

NORTHEAST QUARTER OF SECTION 35, TOWNSHIP 4 SOUTH, RANGE 3 EAST OF THE GILA AND SALT RIVER BASE AND MERIDIAN, PINAL COUNTY, ARIZONA

SHEET INDEX

- 1..... COVER SHEET
2 & 3.. FINAL PLAT
4 & 5.. TABLE & DETAILS

OWNER

CAPDEVLO60, LLC
790 NW 107TH AVE #400
MIAMI, FL 33172
PHONE: 801,489,3215
CONTACT: MCKAY MORLEY

NOTE: OWNER INFORMATION WAS OBTAINED FROM COUNTY ASSESSOR AT THE TIME OF THE SURVEY AND MAY NOT REPRESENT CURRENT OWNERSHIP

APN

APN:
PARCEL 1: 510-120-54J NET AREA:7.1588 AC
PARCEL 2: 510-120-520 NET AREA:8.0459 AC

SITE SUMMARY

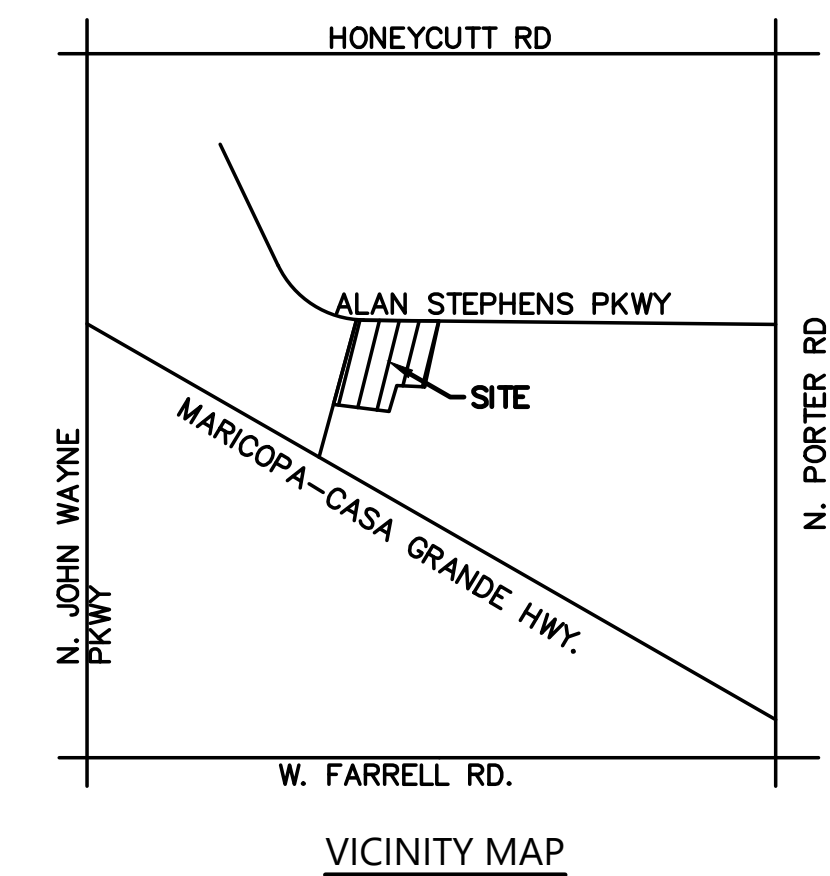
GROSS SITE AREA: 701,130 S.F. (16.10 ACRES)
NET SITE AREA: 662,241 S.F. (15.20 ACRES)
ZONING: RH
PROPOSED NO. UNITS: 293
ALLOWABLE DENSITY: 20.0 DU/AC (RH OPTION)
PROPOSED DENSITY:= 293 DU / 16.10 AC = 18.20 DU/AC
ALLOWABLE LOT COVERAGE: 50%
PROPOSED BLDG COVERAGE: = 254,222 SF = 38.4%
REQUIRED OPEN SPACE: = 140,226 SF = 20% MIN.
PROPOSED OPEN SPACE: = 183,138 SF = 27.7%
UNIT PRODUCT MIX: 153 TOWNHOMES = 44'x21'
140 TOWNHOMES = 36'x24'

BASIS OF BEARING

THE MONUMENT LINE OF STONEGATE ROAD BETWEEN A FOUND 3" BRASS CAP FLUSH AT THE INTERSECTION OF STONEGATE ROAD AND ALAN STEPHEN PARKWAY AND A FOUND 3" BRASS CAP FLUSH LOCATED IN THE NORTHEAST QUARTER OF SECTION 35, TOWNSHIP 4 SOUTH, RANGE 3 EAST OF THE GILA AND SALT RIVER BASE AND MERIDIAN, PINAL COUNTY, ARIZONA BEARING N19°21'12"E. (ASSUMED BEARING)

FLOOD INSURANCE RATE MAP (F.I.R.M.) INFORMATION

Table with 6 columns: COMMUNITY NUMBER, PANEL NUMBER, SUFFIX, FIRM DATE (INDEX DATE), FIRM ZONE, BASE FLOOD ELEVATION (IN AO ZONE USE DEPTH). Row 1: 04021C, 745, F, 06/16/14, X, N/A



ENGINEER

BFH GROUP
3707 EAST SOUTHERN AVENUE
MESA, ARIZONA, 85206
PHONE: 480.734.1446
CONTACT: DAVID M. BOHN

SURVEYOR

HARVEY LAND SURVEYING, INC.
P.O. BOX 10772
CASA GRANDE, ARIZONA, 85130
PHONE: 520,87,4786
E-MAIL: COLEHARVEY@HARVEYSURVEYING.COM

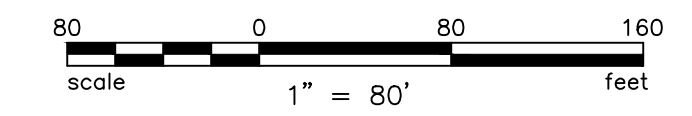
SERVICE PROVIDERS

WATER GLOBAL WATER
SEWER GLOBAL WATER
POLICE CITY OF MARIKOPIA
FIRE CITY OF MARIKOPIA

NOTE: THE MAINTENANCE OF THE STREET LIGHTS SHALL BE THE RESPONSIBILITY OF THE HOMEOWNER'S ASSOCIATION OR ADJACENT PROPERTY OWNER.

BENCHMARK

A "BENCH MARK DISK SET IN A LIGHT STRUCTURE" AS DESCRIBED BY THE NATIONAL GEODETIC SURVEY WITH A DESIGNATION NUMBER OF S 360 AND A PID OF DU1047, SAID POINT BEING IN SECTION 35, TOWNSHIP 4 SOUTH, RANGE 3 EAST, OF THE GILA AND SALT RIVER BASE AND MERIDIAN, PINAL COUNTY, ARIZONA. ELEVATION = 1206.28' (NAVD 88 DATUM)



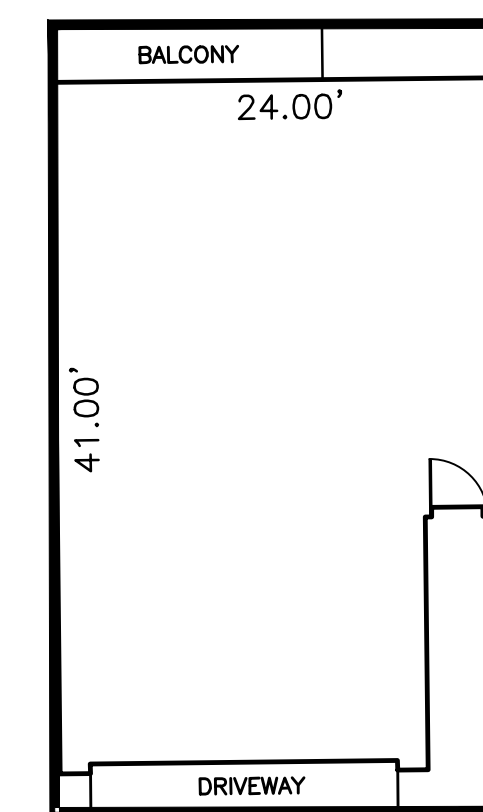
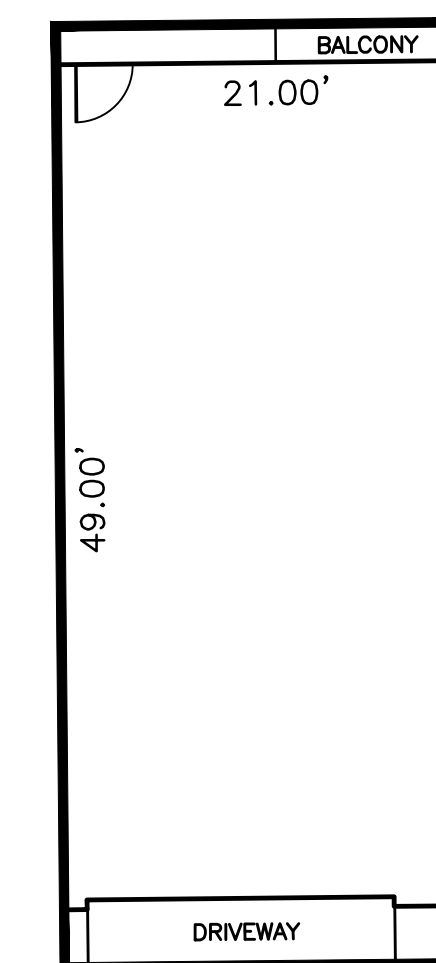
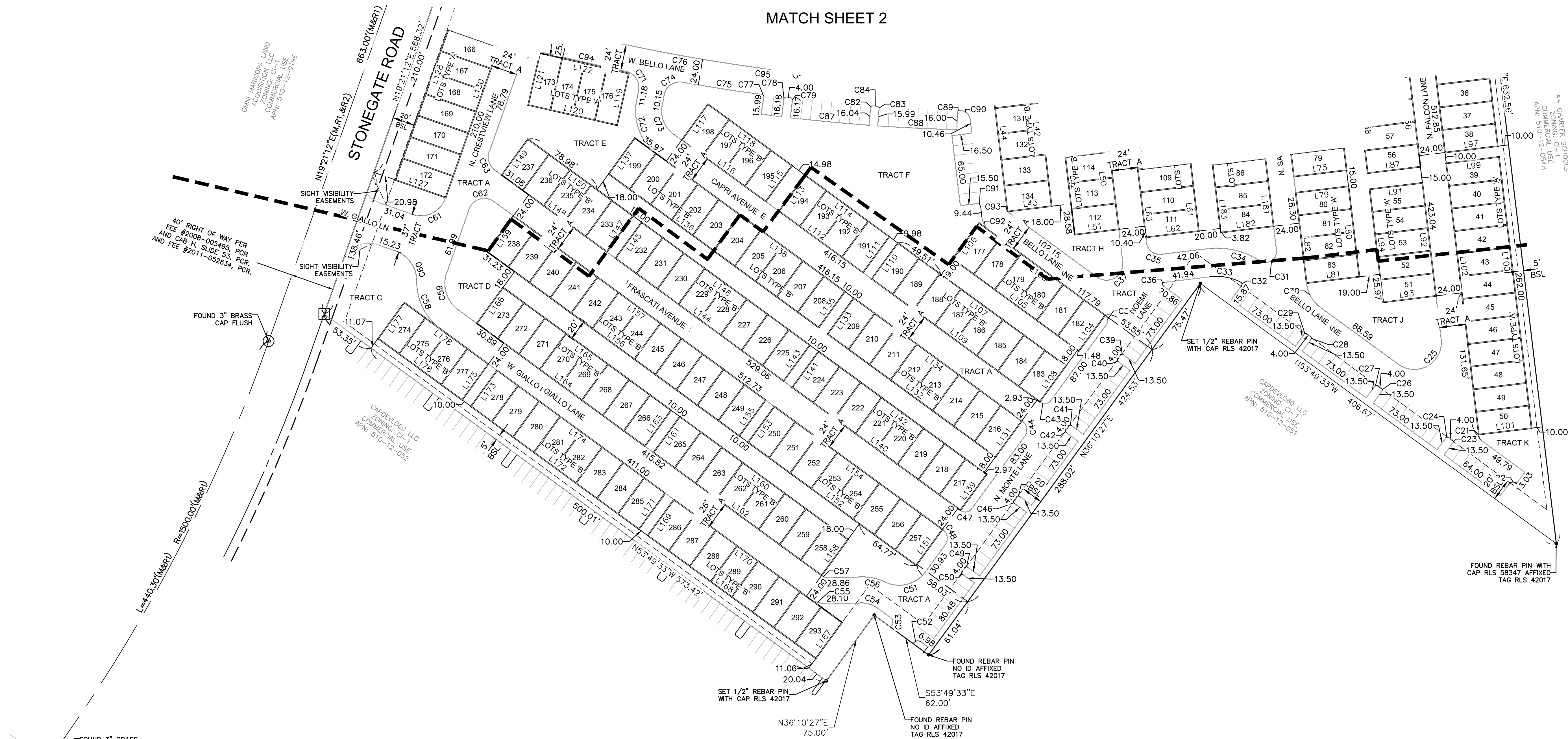
INDEX MAP SCALE 1:80

C:\Users\David\Shared Drive\2021\002021100909\FIS VILLAS AT STONEGATE\DWG\CIVIL\PRELIM\PRELIM PLAT\11622\PRELIM PLAT-01.dwg, 12/13/2022 10:17:20 AM

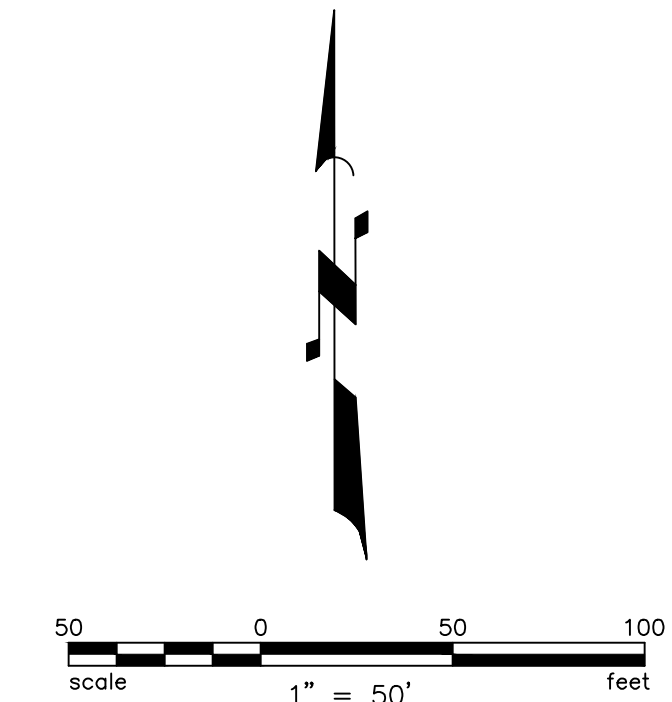
Vertical sidebar containing: BFH Group logo, project name 'VILLAS AT STONEGATE', 'COVER SHEET' label, revision table, project details, engineer/surveyor seals, job number '202110090', and sheet number '1 OF 5'.

C:\Users\David\Shared Drive\2021\0020211009090\090\090\CIVIL\PRELIMINARY\PRELIMINARY PLAT\11622\PRELIM PLAT-02.dwg, 12/13/2022 10:32:55 AM

MATCH SHEET 2



LOT TYPE 'A' LOT TYPE 'B' TYPICAL LOT DETAILS N.T.S.



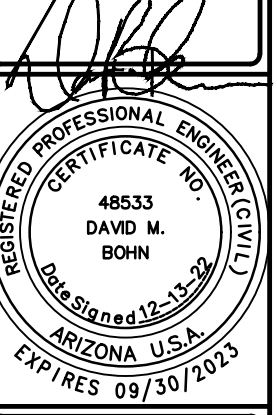
BFHgroup
3707 EAST SOUTHERN AVENUE
MESA, ARIZONA, 85206
PHONE: 480.734.1446

NO.	REVISIONS

PRELIMINARY PLAT
VILLAS AT STONEGATE
CITY OF MARICOPA, AZ

PROJECT:
JOB NO.:
Drawn By: AEA
Checked: DB

CALL THE WORKING DAYS BEFORE YOU DIE
(602) 263-1100
1-800-STAKE-IT
(OUTSIDE MARICOPA COUNTY)



JOB NO.
202110090

SHEET NO.
3

3 OF 5

CURVE TABLE				
CURVE #	LENGTH	RADIUS	DELTA	CHORD
C1	13.11	10.00	75.13	12.19
C2	37.68	21.00	102.80	32.82
C3	11.22	8.00	80.33	10.32
C4	16.04	10.00	91.92	14.38
C5	1.77	2.00	50.66	1.71
C6	1.77	2.00	50.64	1.71
C7	13.84	10.00	79.28	12.76
C8	15.74	12.00	75.15	14.64
C9	1.97	2.00	56.57	1.90
C10	2.60	2.50	59.60	2.48
C11	13.54	10.00	77.60	12.53
C12	15.71	10.00	90.00	14.14
C13	3.14	2.00	90.00	2.83
C14	3.42	2.00	97.98	3.02
C15	29.61	19.76	85.83	26.91
C16	8.87	5.00	101.62	7.75
C17	8.12	40.00	11.62	8.10
C18	6.03	3.00	115.15	5.06
C19	18.33	40.00	26.25	18.17
C20	2.34	5.00	26.80	2.32
C21	4.10	5.00	46.98	3.99
C22	8.35	5.00	95.74	7.42
C23	3.14	2.00	90.00	2.83
C24	3.14	2.00	90.00	2.83
C25	59.01	25.00	135.25	46.24

CURVE TABLE				
CURVE #	LENGTH	RADIUS	DELTA	CHORD
C26	3.14	2.00	90.00	2.83
C27	3.14	2.00	90.00	2.83
C28	3.14	2.00	90.00	2.83
C29	3.14	2.00	90.00	2.83
C30	26.24	32.00	46.98	25.51
C31	22.49	10.00	128.84	18.04
C32	3.47	2.00	99.27	3.05
C33	29.45	50.00	33.74	29.02
C34	51.52	76.00	38.84	50.54
C35	18.85	12.00	90.00	16.97
C36	4.78	2.00	136.98	3.72
C37	34.82	15.00	133.02	27.51
C38	9.42	6.00	90.00	8.49
C39	3.14	2.00	90.00	2.83
C40	3.14	2.00	90.00	2.83
C41	3.14	2.00	90.00	2.83
C42	3.14	2.00	90.00	2.83
C43	11.00	7.00	90.00	9.90
C44	15.71	10.00	90.00	14.14
C45	3.14	2.00	90.00	2.83
C46	3.14	2.00	90.00	2.83
C47	11.00	7.00	90.00	9.90
C48	15.71	10.00	90.00	14.14
C49	3.14	2.00	90.00	2.83
C50	3.14	2.00	90.00	2.83

CURVE TABLE				
CURVE #	LENGTH	RADIUS	DELTA	CHORD
C51	41.44	30.00	79.14	38.22
C52	7.85	5.00	90.00	7.07
C53	7.85	5.00	90.00	7.07
C54	17.25	26.00	38.01	16.94
C55	22.56	34.00	38.01	22.15
C56	23.70	50.00	27.15	23.47
C57	6.63	10.00	38.01	6.51
C58	52.95	55.03	55.13	50.93
C59	38.32	30.00	73.18	35.76
C60	37.67	30.00	71.95	35.24
C61	37.70	24.00	90.00	33.94
C62	27.97	15.00	106.82	24.09
C63	19.16	15.00	73.18	17.88
C64	37.01	25.00	84.81	33.72
C65	48.79	31.06	90.00	43.93
C66	40.91	30.00	78.13	37.81
C67	3.14	2.00	90.00	2.83
C68	3.14	2.00	90.00	2.83
C69	4.57	2.00	130.89	3.64
C70	28.53	30.00	54.49	27.47
C71	23.04	15.00	88.02	20.84
C72	55.54	50.00	63.64	52.73
C73	28.88	26.00	63.64	27.42
C74	23.62	15.00	90.21	21.25
C75	73.61	1734.00	2.43	73.61

CURVE TABLE				
CURVE #	LENGTH	RADIUS	DELTA	CHORD
C76	207.66	1710.00	6.96	207.54
C77	3.16	2.00	90.39	2.84
C78	3.14	2.00	90.00	2.83
C79	3.14	2.00	90.00	2.83
C80	34.46	18.98	104.04	29.92
C81	10.91	8.01	78.05	10.09
C82	3.25	2.00	93.00	2.90
C83	3.15	2.00	90.12	2.83
C84	3.89	1734.00	0.13	3.89
C85	99.77	1714.27	3.33	99.75
C86	20.36	12.00	97.21	18.00
C87	72.97	1752.00	2.39	72.97
C88	73.06	1752.00	2.39	73.05
C89	3.14	2.00	89.92	2.83
C90	14.25	10.00	81.62	13.07
C91	4.71	3.00	90.00	4.24
C92	16.40	20.00	46.98	15.94
C93	0.21	0.25	46.98	0.20
C94	71.92	1734.00	2.38	71.92
C95	207.66	1710.00	6.96	207.54

TRACT TABLE			
TRACT	ACRES	AREA SQ. FT.	DESCRIPTION OF USE
TRACT A	3.86	168325.97	INGRESS, EGRESS, PUBLIC UTILITY, REFUSE COLLECTION, DRAINAGE EASEMENT AND EMERGENCY VEHICLE ACCESS
TRACT B	0.18	7877.96	OPEN SPACE/LANDSCAPE
TRACT C	0.32	13856.03	OPEN SPACE/LANDSCAPE
TRACT D	0.35	15444.60	OPEN SPACE/LANDSCAPE/AMENITIES
TRACT E	0.40	17525.92	OPEN SPACE/LANDSCAPE/AMENITIES
TRACT F	0.54	23486.00	OPEN SPACE/LANDSCAPE/AMENITIES
TRACT G	0.15	6527.39	OPEN SPACE/LANDSCAPE
TRACT H	0.23	10017.20	OPEN SPACE/LANDSCAPE
TRACT I	0.24	10524.03	OPEN SPACE/LANDSCAPE
TRACT J	0.37	16007.07	OPEN SPACE/LANDSCAPE/AMENITIES
TRACT K	0.35	15402.43	OPEN SPACE/LANDSCAPE/AMENITIES
TRACT L	1.43	62145.08	OPEN SPACE/LANDSCAPE/AMENITIES

LOT TABLE		
LOT#	S.F.	AC
1	1026.77	0.02
2	1022.97	0.02
3	1029.00	0.02
4	1029.00	0.02
5	1029.00	0.02
6	1029.00	0.02
7	1025.71	0.02
8	1029.00	0.02
9	1028.35	0.02
10	1029.00	0.02
11	1029.00	0.02
12	1029.00	0.02
13	1029.00	0.02
14	1029.00	0.02
15	1027.31	0.02
16	1029.00	0.02
17	1029.00	0.02
18	1029.00	0.02
19	1029.00	0.02
20	1034.37	0.02
21	1029.00	0.02
22	1029.00	0.02
23	1029.00	0.02
24	1024.09	0.02
25	1029.28	0.02
26	1026.46	0.02
27	1029.00	0.02
28	1029.00	0.02
29	1029.00	0.02
30	1029.00	0.02

LOT TABLE		
LOT#	S.F.	AC
31	1029.00	0.02
32	1029.00	0.02
33	1029.00	0.02
34	1029.00	0.02
35	1029.00	0.02
36	1029.00	0.02
37	1029.00	0.02
38	1029.00	0.02
39	1029.00	0.02
40	1029.00	0.02
41	1029.00	0.02
42	1029.00	0.02
43	1029.00	0.02
44	1029.00	0.02
45	1029.00	0.02
46	1029.00	0.02
47	1029.00	0.02
48	1029.00	0.02
49	1029.00	0.02
50	1029.00	0.02
51	1029.00	0.02
52	1029.00	0.02
53	1029.00	0.02
54	1029.00	0.02
55	1029.00	0.02
56	1029.00	0.02
57	1029.00	0.02
58	1029.00	0.02
59	1029.00	0.02
60	1029.00	0.02

LOT TABLE		
LOT#	S.F.	AC
61	1029.00	0.02
62	1029.00	0.02
63	1029.00	0.02
64	1029.00	0.02
65	1029.00	0.02
66	1029.00	0.02
67	1029.00	0.02
68	1029.00	0.02
69	1029.00	0.02
70	1029.00	0.02
71	1029.00	0.02
72	1029.00	0.02
73	1029.00	0.02
74	1029.00	0.02
75	1029.00	0.02
76	1029.00	0.02
77	1029.00	0.02
78	1029.00	0.02
79	1029.00	0.02
80	1029.00	0.02
81	1031.63	0.02
82	1026.37	0.02
83	1029.00	0.02
84	1029.00	0.02
85	1029.00	0.02
86	1029.00	0.02
87	1029.00	0.02
88	1029.00	0.02
89	1029.00	0.02
90	1029.00	0.02

LOT TABLE		
LOT#	S.F.	AC
91	1029.00	0.02
92	1029.00	0.02
93	1029.00	0.02
94	1029.00	0.02
95	1029.00	0.02
96	1029.00	0.02
97	1029.00	0.02
98	1029.00	0.02
99	1029.00	0.02
100	1029.00	0.02
101	1029.00	0.02
102	1029.00	0.02
103	1029.00	0.02
104	1029.00	0.02
105	1029.00	0.02
106	1029.00	0.02
107	1029.00	0.02
108	1029.00	0.02
109	1029.00	0.02
110	1028.72	0.02
111	1028.98	0.02
112	984.00	0.02
113	984.00	0.02
114	984.00	0.02
115	984.00	0.02
116	984.00	0.02
117	984.00	0.02
118	984.00	0.02
119	984.00	0.02
120	984.00	0.02

LOT TABLE		
LOT#	S.F.	AC
121	984.00	0.02
122	984.00	0.02
123	984.00	0.02
124	984.00	0.02
125	984.00	0.02
126	984.00	0.02
127	984.00	0.02
128	984.00	0.02
129	984.00	0.02
130	984.00	0.02
131	984.00	0.02
132	984.00	0.02
133	984.00	0.02
134	984.00	0.02
135	1029.00	0.02
136	1029.00	0.02
137	1029.00	0.02
138	1029.00	0.02
139	1029.00	0.02
140	1029.00	0.02
141	1029.00	0.02
142	1029.00	0.02
143	1029.00	0.02
144	1029.00	0.02
145	1029.00	0.02
146	1029.00	0.02
147	1029.00	0.02
148	1029.00	0.02
149	1029.00	0.02
150	1029.00	0.02

LOT TABLE		
LOT#	S.F.	AC
151	1029.00	0.02
152	1029.00	0.02
153	1029.00	0.02
154	1029.00	0.02
155	1029.00	0.02
156	1029.00	0.02
157	1029.00	0.02
158	1029.00	0.02
159	1029.00	0.02
160	1029.00	0.02
161	1029.00	0.02
162	1029.00	0.02
163	1029.00	0.02
164	1029.00	0.02
165	1029.00	0.02
166	1029.00	0.02
167	1029.00	0.02
168	1029.00	0.02

LINE #	LENGTH	BEARING
L2	42.00	S84° 20' 08"E
L3	42.00	S84° 20' 08"E
L4	42.00	N88° 35' 20"E
L5	84.00	N88° 35' 20"E
L6	42.00	N88° 35' 20"E
L7	44.00	S05° 39' 52"W
L8	42.00	S84° 20' 08"E
L9	84.00	S84° 20' 08"E
L10	42.00	S84° 20' 08"E
L11	44.00	S05° 39' 52"W
L12	44.00	S01° 24' 40"E
L13	42.01	N89° 57' 10"E
L14	84.00	N88° 35' 20"E
L15	42.00	N88° 35' 20"E
L16	44.00	N01° 24' 40"W
L17	44.00	N06° 34' 29"W
L18	84.00	N83° 25' 31"E
L19	84.00	N83° 25' 31"E
L20	42.00	N83° 25' 31"E
L21	44.00	S06° 34' 29"E
L22	84.00	N83° 25' 31"E
L23	84.00	N83° 25' 31"E
L24	42.00	N83° 25' 31"E
L25	44.00	N83° 09' 27"E
L26	147.00	S06° 50' 33"E
L27	44.00	S83° 09' 27"W
L28	147.00	S06° 50' 33"E
L29	44.00	N83° 09' 27"E
L30	147.00	S06° 50' 33"E
L31	147.00	N06° 50' 33"W
L32	44.00	S83° 09' 27"W

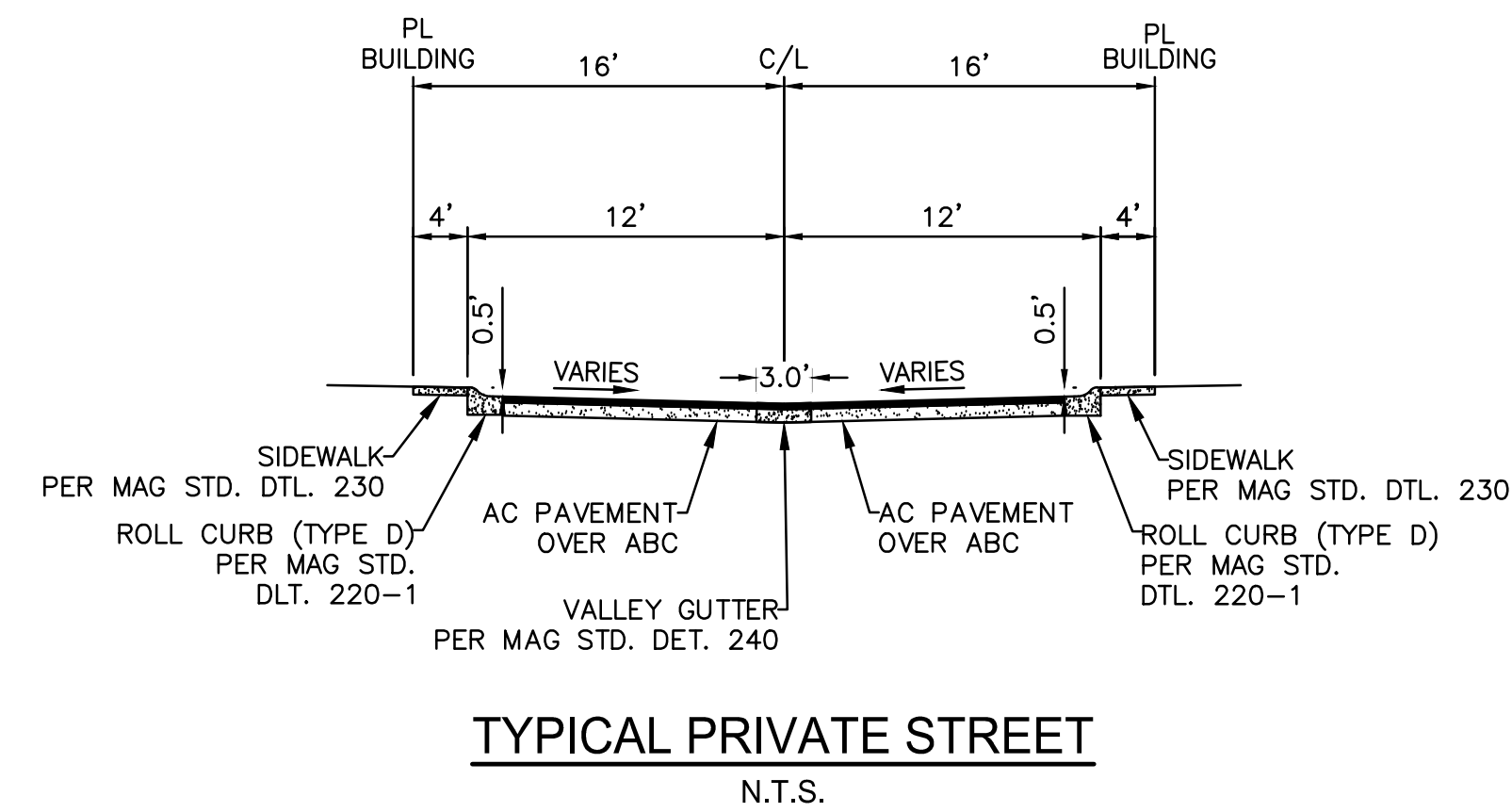
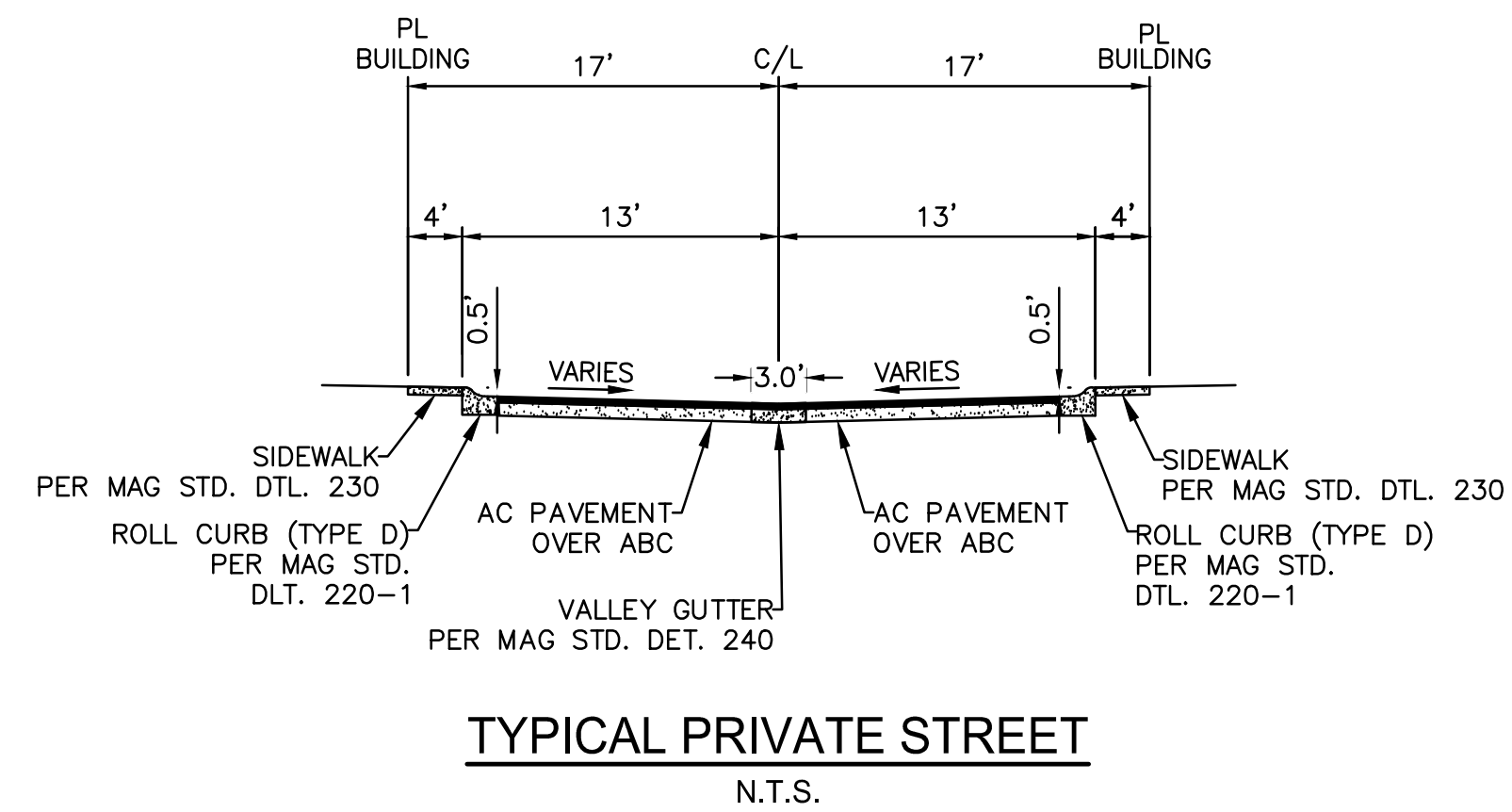
LINE #	LENGTH	BEARING
L33	44.00	N83° 09' 27"E
L34	147.00	S06° 50' 33"E
L35	44.00	S83° 09' 27"W
L36	147.00	N06° 50' 33"W
L37	36.00	N83° 09' 27"E
L38	120.00	S06° 50' 33"E
L39	36.00	S83° 09' 27"W
L40	120.00	N06° 50' 33"W
L41	36.00	N83° 09' 27"E
L42	144.00	S06° 50' 33"E
L43	36.00	S83° 09' 27"W
L44	144.00	N06° 50' 33"W
L45	36.00	N83° 09' 27"E
L46	192.00	S06° 50' 33"E
L47	36.00	S83° 09' 27"W
L48	192.00	N06° 50' 33"W
L49	36.00	N83° 09' 27"E
L50	96.00	S06° 50' 33"E
L51	36.00	S83° 09' 27"W
L52	96.00	N06° 50' 33"W
L53	44.00	N83° 09' 27"E
L54	84.00	N06° 50' 33"W
L55	84.00	S06° 50' 33"E
L56	44.00	S83° 09' 27"W
L57	84.00	N06° 50' 33"W
L58	84.00	N06° 50' 33"W
L59	44.00	N83° 09' 27"E
L60	84.00	S06° 50' 33"E
L61	42.00	S06° 50' 33"E
L62	44.00	N83° 09' 27"E
L63	42.00	N06° 50' 33"W
L64	84.00	N06° 50' 33"W

LINE #	LENGTH	BEARING
L65	44.00	N83° 09' 27"E
L66	84.00	S06° 50' 33"E
L67	84.00	S06° 50' 33"E
L68	44.00	S83° 09' 27"W
L69	84.00	N06° 50' 33"W
L70	84.00	N06° 50' 33"W
L71	44.00	N83° 09' 27"E
L72	84.00	S06° 50' 33"E
L73	84.00	S06° 50' 33"E
L74	84.00	S06° 50' 33"E
L75	44.00	S83° 09' 27"W
L76	84.00	N06° 50' 33"W
L77	84.00	N06° 50' 33"W
L78	84.00	N06° 50' 33"W
L79	44.00	N83° 09' 27"E
L80	84.00	S06° 50' 33"E
L81	44.00	S83° 09' 27"W
L82	84.00	N06° 50' 33"W
L83	44.00	N83° 09' 27"E
L84	84.00	S06° 50' 33"E
L85	84.00	S06° 50' 33"E
L86	84.00	S06° 50' 33"E
L87	44.00	S83° 09' 27"W
L88	84.00	N06° 50' 33"W
L89	84.00	N06° 50' 33"W
L90	84.00	N06° 50' 33"W
L91	44.00	N83° 09' 27"E
L92	105.00	S06° 50' 33"E
L93	44.00	S83° 09' 27"W
L94	105.00	N06° 50' 33"W
L95	44.00	N83° 09' 27"E
L96	252.00	S06° 50' 33"E

LINE #	LENGTH	BEARING
L97	44.00	S83° 09' 27"W
L98	252.00	N06° 50' 33"W
L99	44.00	N83° 09' 27"E
L100	252.00	N06° 50' 33"W
L101	44.00	S83° 09' 27"W
L102	252.00	N06° 50' 33"W
L103	144.00	S53° 49' 33"E
L104	36.00	S36° 10' 28"W
L105	144.00	N53° 49' 32"W
L106	36.00	N36° 10' 28"E
L107	192.00	S53° 49' 32"E
L108	36.00	S36° 10' 28"W
L109	192.00	N53° 49' 32"W
L110	36.00	S36° 10' 28"W
L111	36.00	S36° 10' 28"W
L112	96.00	N53° 49' 32"W
L113	36.00	N36° 10' 28"E
L114	96.00	S53° 49' 32"E
L115	36.00	S36° 10' 28"W
L116	96.00	N53° 49' 32"W
L117	36.00	N36° 10' 28"E
L118	96.00	S53° 49' 32"E
L119	44.00	S12° 51' 05"W
L120	84.00	N77° 08' 55"W
L121	44.00	N12° 51' 05"E
L122	84.00	S77° 08' 55"E
L123	44.00	N11° 25' 39"E
L124	147.00	S78° 34' 21"E
L125	44.00	S11° 25' 39"W
L126	147.00	N78° 34' 21"W
L127	44.00	N70° 38' 47"W
L128	210.00	N19° 21' 13"E

LINE #	LENGTH	BEARING
L129	44.00	S70° 38' 47"E
L130	210.00	S19° 21' 13"W
L131	36.00	S36° 10' 28"W
L132	192.00	N53° 49' 32"W
L133	36.00	N36° 10' 28"E
L134	192.00	S53° 49' 32"E
L135	36.00	S36° 10' 28"W
L136	240.00	N53° 49' 32"W
L137	36.00	N36° 10' 28"E
L138	240.00	S53° 49' 32"E
L139	36.00	S36° 12' 42"W
L140	192.00	N53° 49' 32"W
L141	36.00	N36° 10' 28"E
L142	192.00	S53° 49' 32"E
L143	36.00	S36° 10' 28"W
L144	191.98	N53° 49' 32"W
L145	36.00	N36° 10' 28"E
L146	192.00	S53° 49' 32"E
L147	36.00	S36° 10' 28"W
L148	120.00	N53° 49' 32"W
L149	36.00	N36° 10' 28"E
L150	120.00	S53° 49' 32"E
L151	36.00	S36° 10' 28"W
L152	192.00	N53° 49' 32"W
L153	36.00	N36° 10' 28"E
L154	192.00	S53° 49' 32"E
L155	36.00	S36° 10' 28"W
L156	288.00	N53° 49' 32"W
L157	288.00	S53° 49' 32"E
L158	36.00	S36° 10' 28"W
L159	36.00	S36° 10' 28"W
L160	192.00	N53° 49' 32"W

LINE #	LENGTH	BEARING
L161	36.00	S36° 10' 28"W
L162	192.00	S53° 49' 32"E
L163	36.00	S36° 10' 29"W
L164	192.00	N53° 47' 18"W
L165	192.00	N53° 49' 32"W
L166	36.00	S36° 10' 28"W
L167	36.00	S36° 10' 28"W
L168	192.00	N53° 49' 32"W
L169	36.00	N36° 10' 28"E
L170	192.00	S53° 49' 32"E
L171	36.00	S36° 10' 28"W
L172	192.00	N53° 47' 18"W
L173	36.00	N36° 12' 42"E
L174	192.00	S53° 47' 18"E
L175	36.00	S36° 10' 28"W
L176	96.00	N53° 49' 32"W
L177	36.00	N36° 10' 28"E
L178	96.00	S53° 49' 32"E
L179	44.00	N83° 09' 27"E
L180	84.00	S06° 50' 33"E
L181	42.00	S06° 50' 33"E
L182	44.00	S83° 09' 27"W
L183	42.00	N06° 50' 33"W
L184	84.00	N06° 50' 33"W



C:\Users\David\Shared Drive\2021\0020211009090\DRIVE\2021\0020211009090\DRIVE\2021\0020211009090\PRELIM\PLAT-02.dwg, 12/13/2022 10:35:11 AM

BFH Group
 3707 EAST SOUTHERN AVENUE
 MESA, ARIZONA, 85206
 PHONE: 480.734.1446

NO.	DATE	REVISIONS

TABLES & DETAILS
VILLAS AT STONEGATE
 CITY OF MARICOPA, AZ
 PROJECT:

Job No.:
 Drawn By: AEA
 Checked: DB

CALL THE WORKING DAYS BEFORE YOU DIG
 (602) 263-1100
 1-800-STAKE-IT
 (OUTSIDE MARICOPA COUNTY)

REGISTERED PROFESSIONAL ENGINEER
 48533
 DAVID M. BOHN
 ARIZONA U.S.A.
 EXP. RES. 09/30/2023

JOB NO.
 202110090

SHEET NO.
5
 5 OF 5