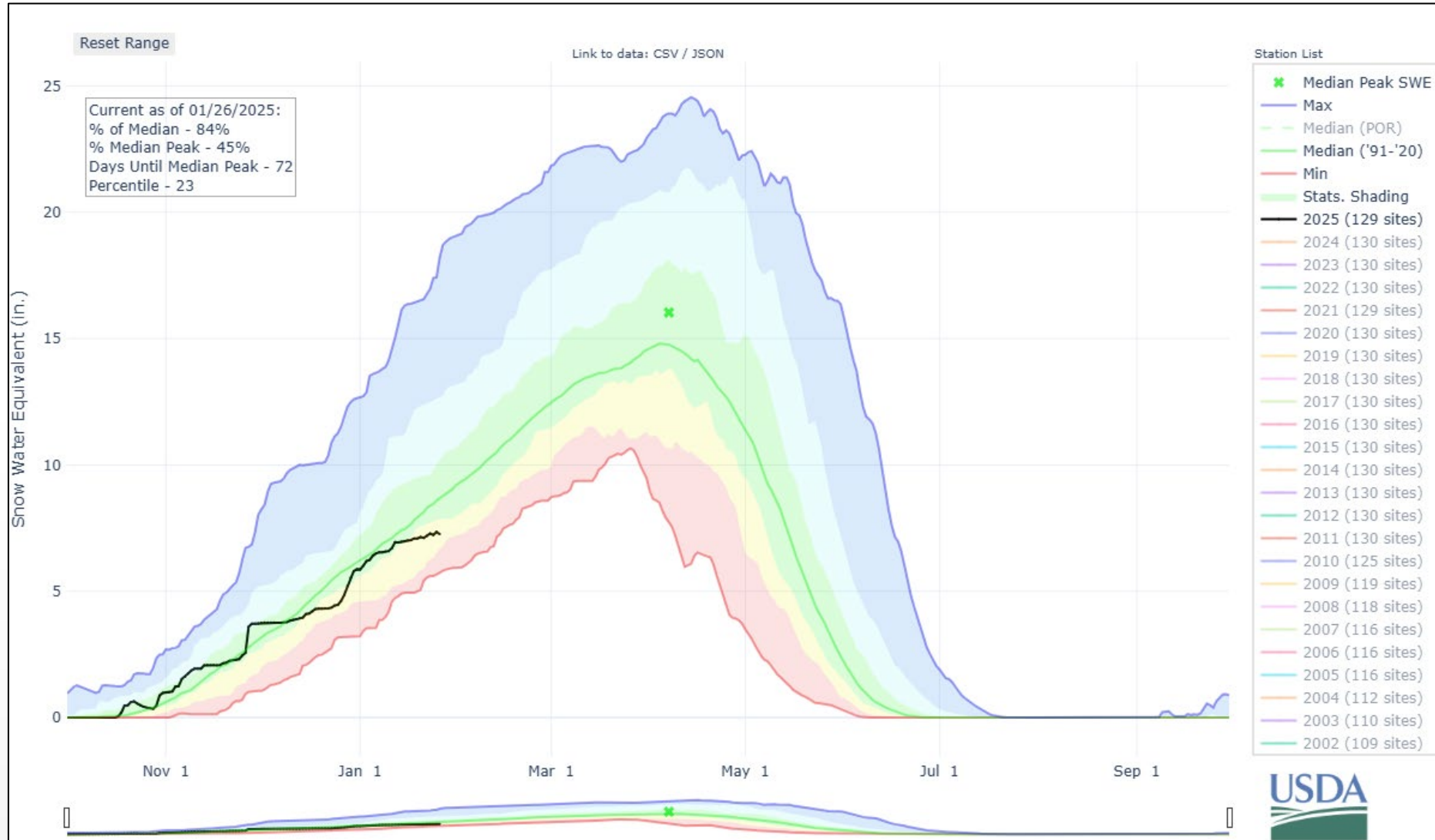




# ***2025 Water Resources and Legislative Update***

- Water Resources Background
  - Colorado River
  - Groundwater
- Legislative
  - Where we've been
  - Where we are heading
- Water Augmentation
  - Aquifer Recharge
  - Bartlet Dam water
- Summary

# Colorado River





## Post 2026 Guidelines

- Current interim guidelines 2007 – 2026
- DCP expires in 2026
- New, post-2026 guidelines need to be put in place and involves:
  - 7 Basin States
  - Federal Government
  - Mexico



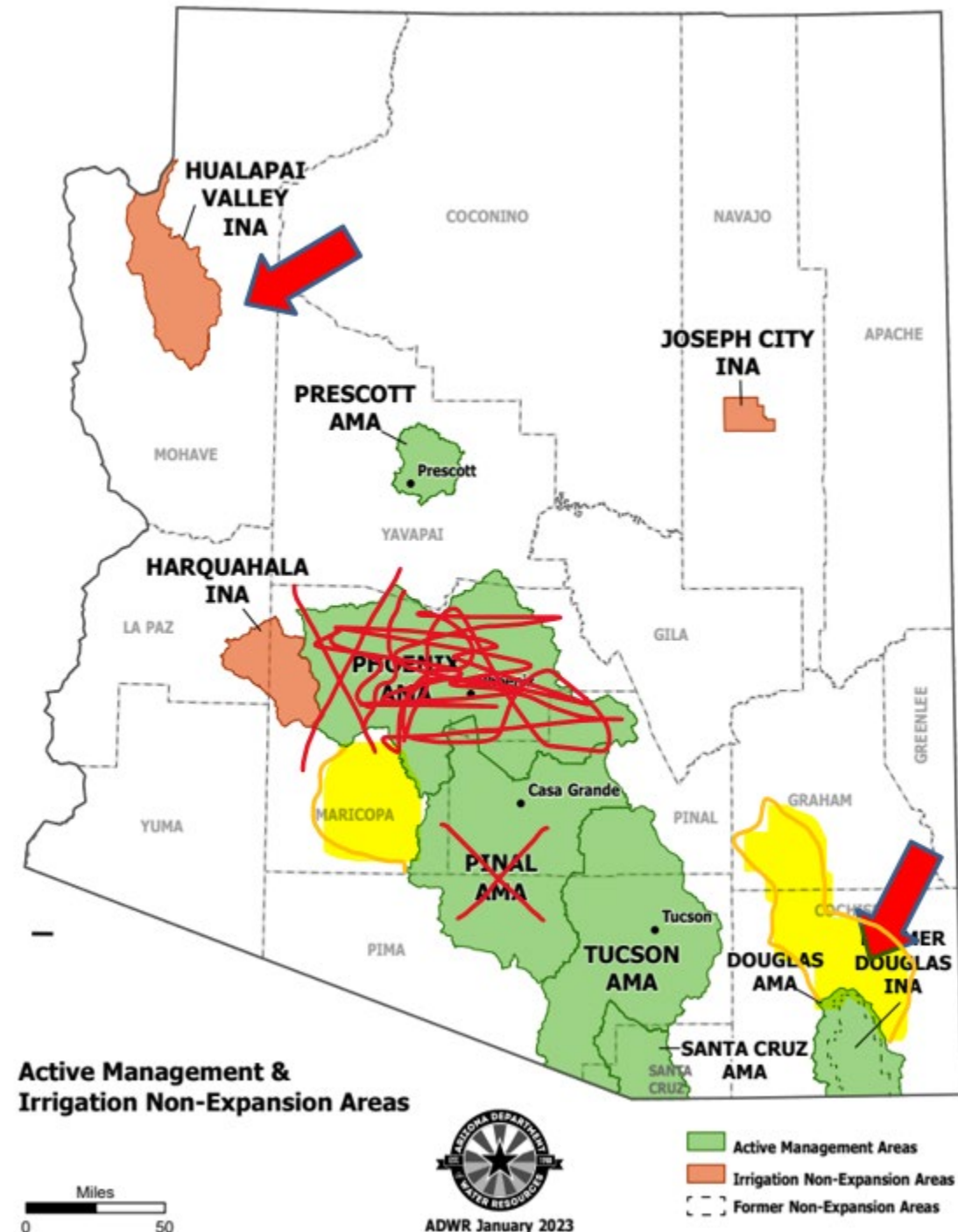
## Two Major Issues

1. Over pumping in rural areas
2. Projected unmet demand over the next 100-years in Assured Water Supply (AWS) groundwater models (regulatory program for new subdivisions)

# Groundwater Regulation – A Massive Amount of Recent Changes

- 2019 – Closed the Pinal AMA (AWS) \*
  - ADWR Director Buschatzke, “It’s not if, but when[...]”
- 12/1/22 – Douglas AMA created
- 12/19/22 – Hualapai INA created
- 1/9/23 – Closed the Lower-Hassayampa basin (AWS)
- 6/1/23 – Closed the Phoenix AMA (AWS)
- Current – Gila Bend and Wilcox AMAs are proposed
- 11/22/24 – ADAWS Rule Finalized

\* note – we have a DAWS for GW SCWC (Maricopa) which transcends this issue



- Legislation has been gaining importance for years
- Historical success
  - SB 1274 (2021 Pinal Stakeholder bill)
    - Protected our (and others') DAWS
    - Allowed for reconfiguring plats for CAWS
    - Protected water stored underground by statutorily defining key terms



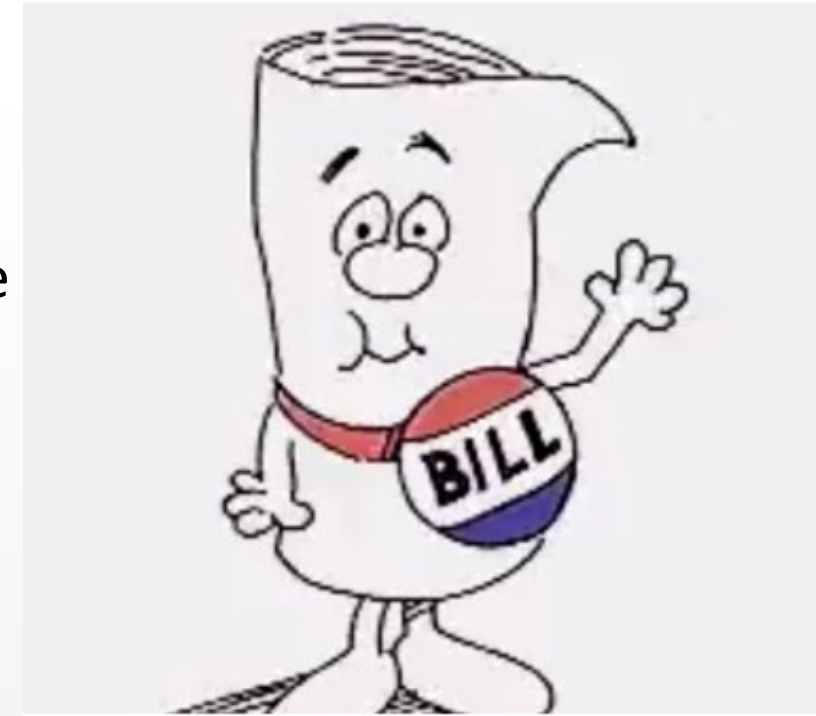
## 2024 Legislative Session Statistics



- 1,660 bills introduced
- 394 bills mentioned water
- > 80 water bills tracked
- 332 bills transmitted to the Governor
- 259 signed by the Governor
- Three significant water bills signed by the Governor



- 2025 statistics
- 1,046 bills introduced (as of 1/28/25)
- 163 bills mention water (as of 1/28/25)
- > 90 water bills that we are tracking (as of 1/28/25)
- The last day to introduce bills in the Senate and House are Feb 3 and Feb 10 respectively
- The AZ State budget needs to be complete by June 30





- Assured Water Supply “Agriculture To Urban”
- A new and very important process to allow for an incentive to convert agriculture lands to municipal uses
- Two separate processes:
  - Senator Shope is leading a Legislative process
  - The Arizona Department of Water Resources is leading a Rule Process

# Water Augmentation – Recharge

- Managed aquifer recharge is the process of intentionally recharging aquifers with water
- We'll use excess recycled water to recharge the aquifer
- Save water for the future
- Keep aquifer levels up



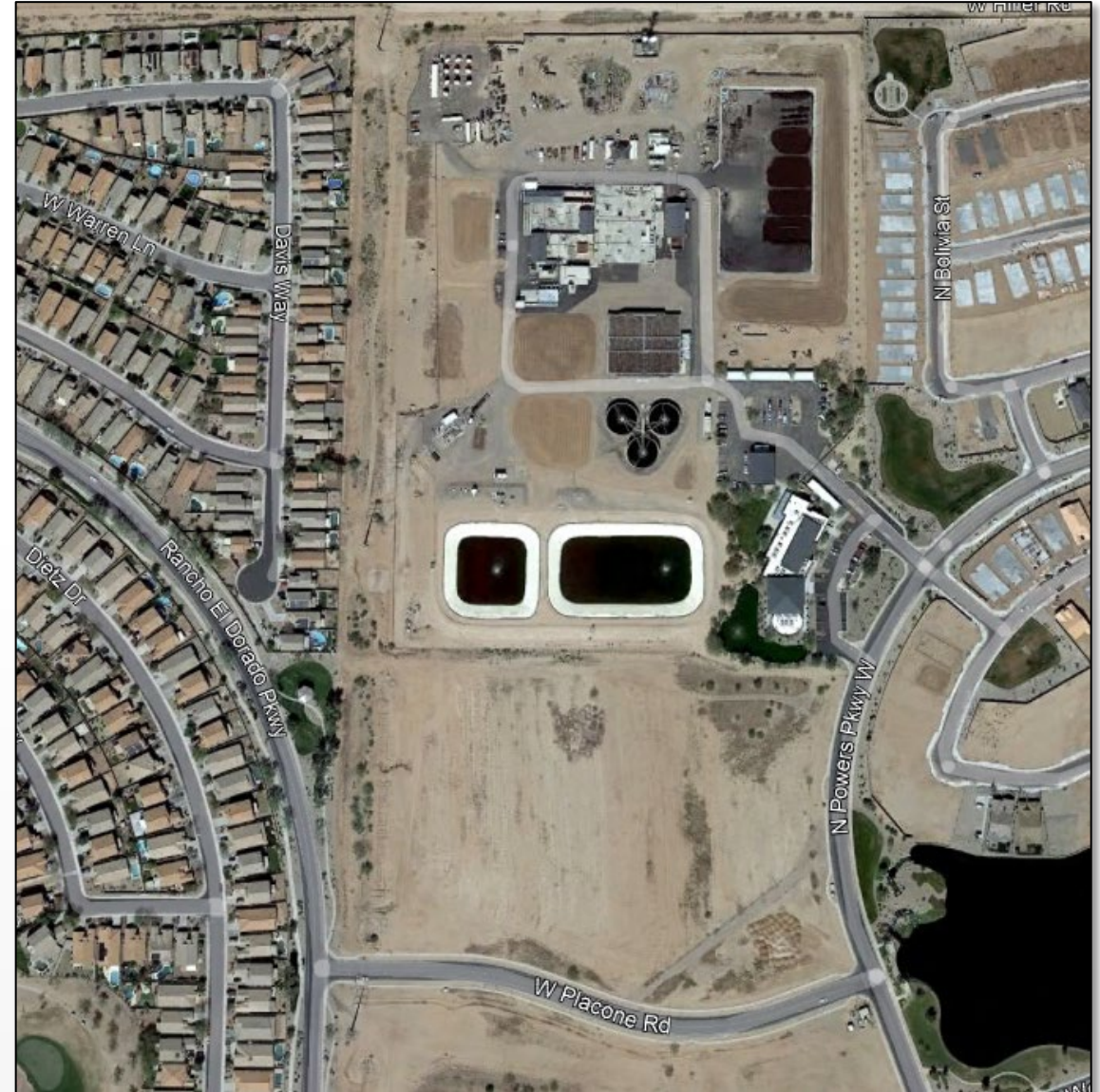


- Several methods
  - Aquifer Storage and Recovery (ASR) wells (direct injection)
  - Vadose zone wells
  - Recharge trenches
  - Percolation basins



# Water Augmentation – Recharge

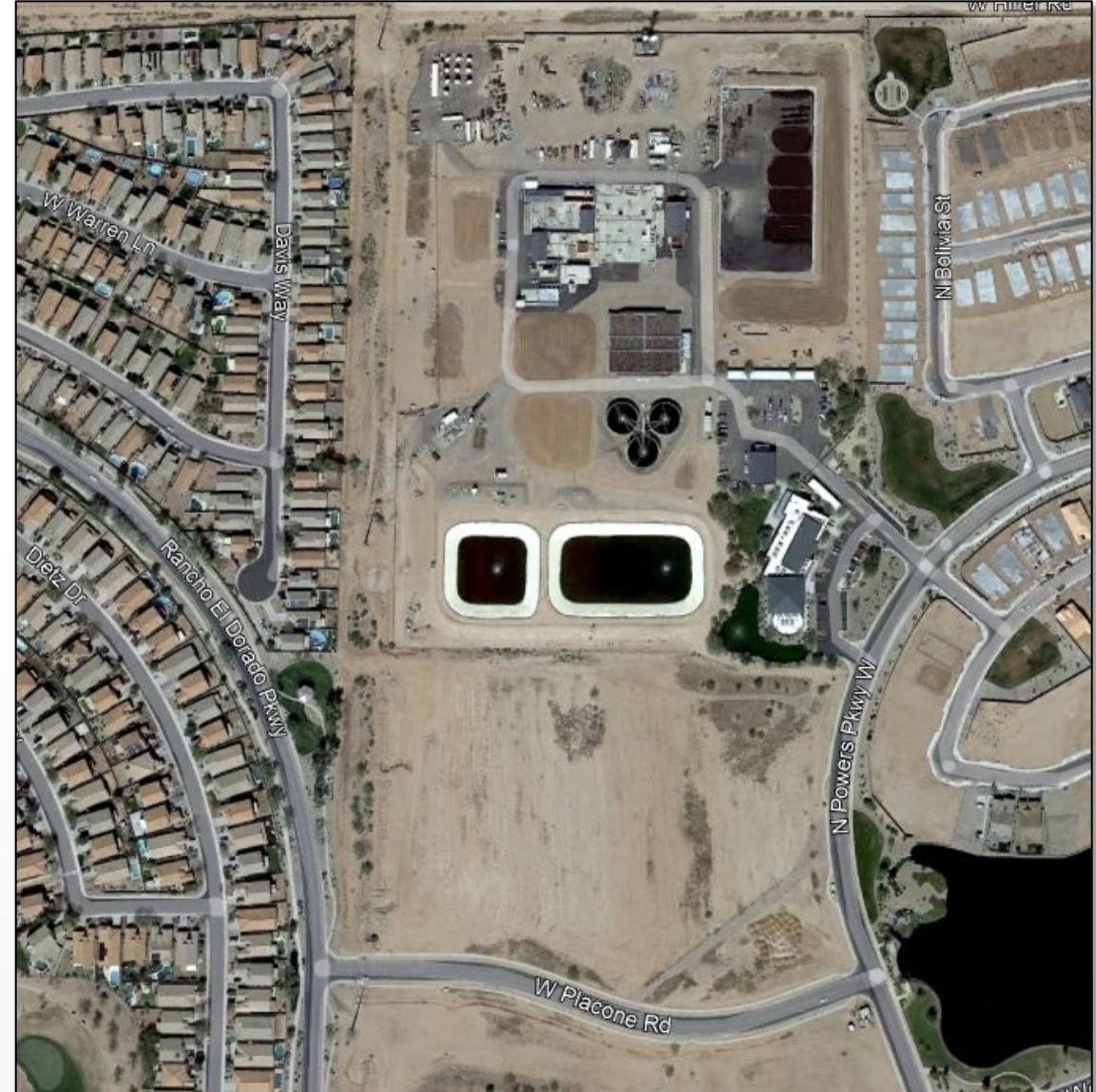
- Recharge adjacent to Campus 1 WRF
  - Partnership with the City of Maricopa
  - \$8M project
    - \$6M of federal funds
    - Managed by Corps under 595 program
- Made possible with assistance from Congressman Greg Stanton





# Water Augmentation – Recharge

- Two or three percolation basins
- Wet and dry cycling
- Projected recharge capacity of 400 to 600 million gallons per year
- Additive to our long-term water supplies
- Interpretive and education signage and exhibit





# Water Augmentation - Bartlett Dam

- Verde Reservoirs Sedimentation Mitigation Study

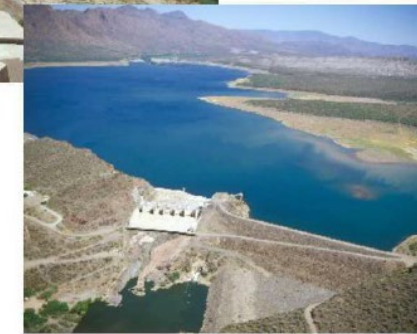


- Construct a new Bartlett Dam to:
  - Mitigate sediment buildup in Horseshoe Reservoir
  - Increase storage capacity
- Partners
  - Salt River Project
  - Federal government
  - Local utilities
    - Including Pinal County Water Augmentation Authority (PCWAA)



BUREAU OF  
RECLAMATION

## Appendix L DRAFT Verde Reservoirs Sediment Mitigation Feasibility Plan of Study

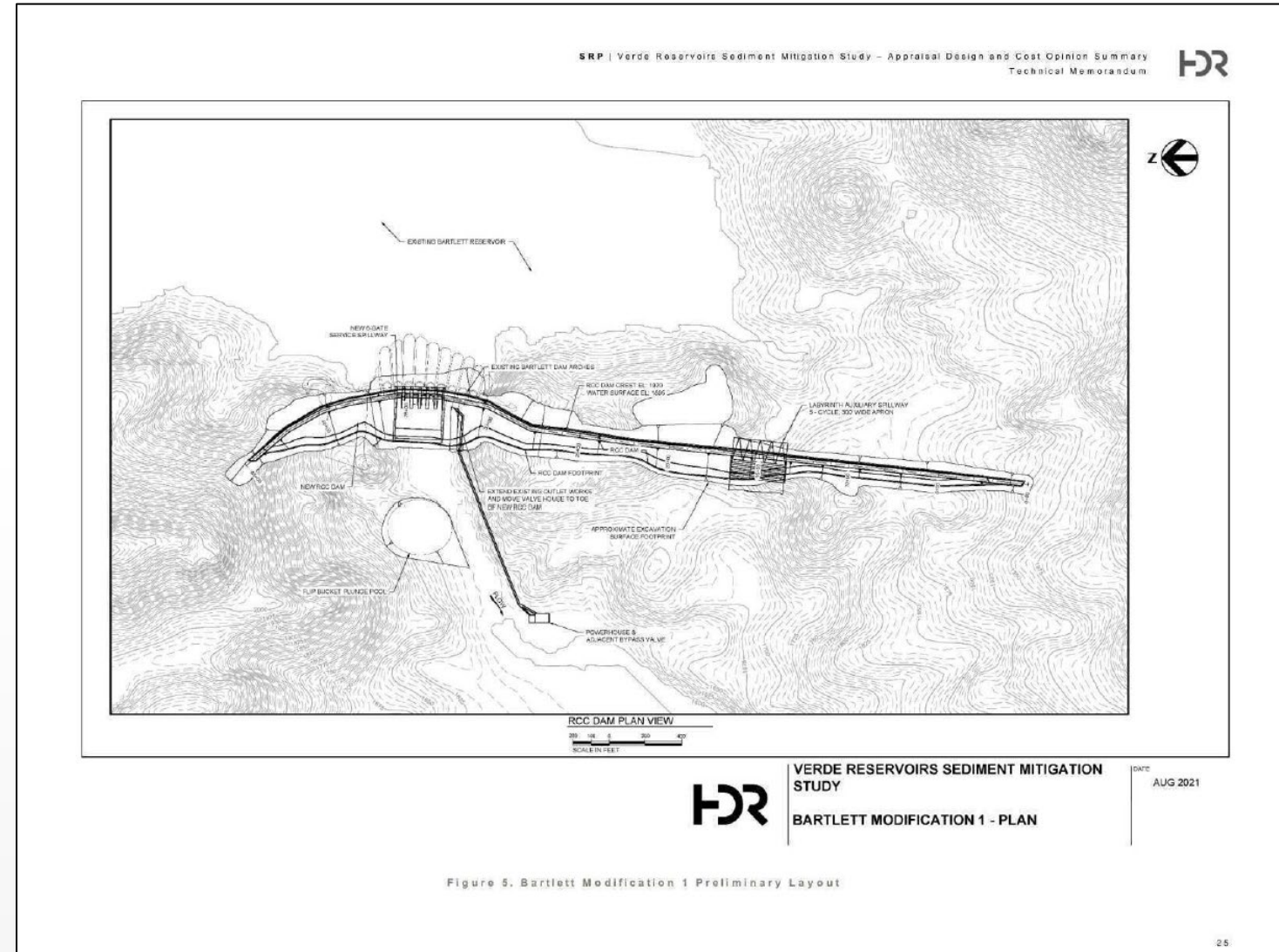


DRAFT



# Water Augmentation - Bartlett Dam

- PCWAA Capacity  
Allocation = 7,291 AF
  - Annual yield is ~2,083 AF
- Global Water 3,645 AF
  - Annual yield is ~1,041 AF
- Preliminary Cost
  - \$860 million in total
  - \$11 million for Global
- PCWAA Legislation





- Water leases
- Water exchanges
- Long-Term Storage Credits
- Harquahala Valley imported water



- Water is scarce
  - Drought on the Colorado River with new guidelines are in the works
  - Groundwater regulations are continuing to become stricter
- Maintain our DAWS
  - Water Augmentation
    - Recharge
    - Bartlett Dam





**GWR**  

---

*Global Water Resources*

NASDAQ: *GWRS*

Thank You