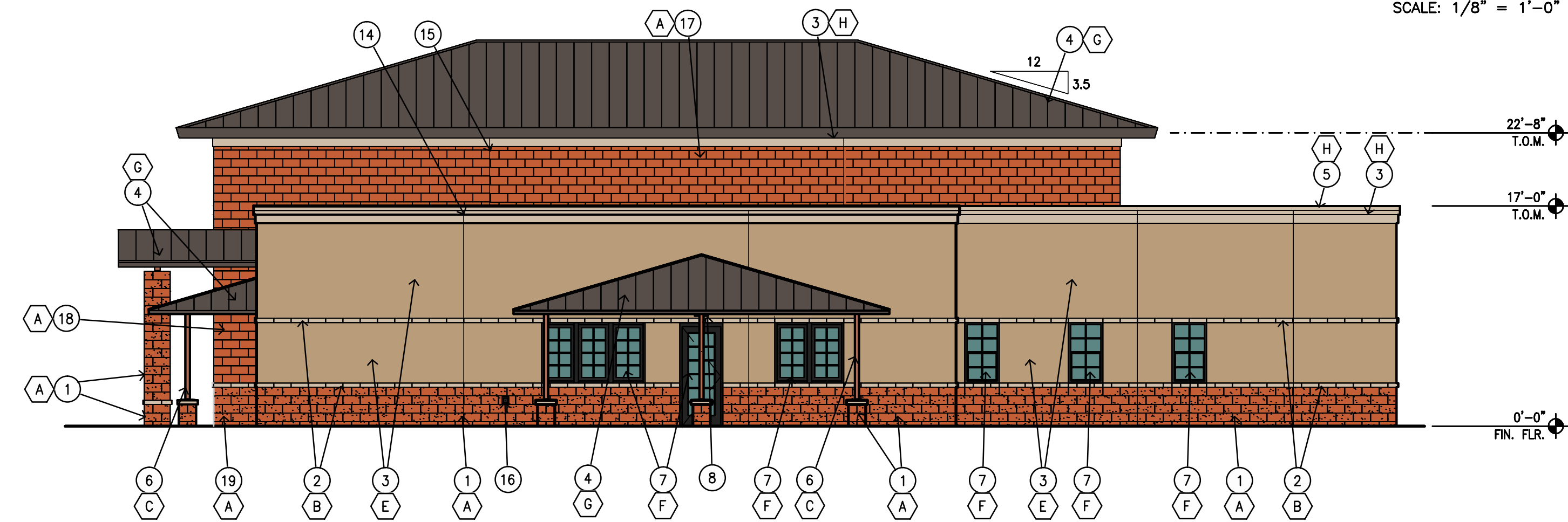
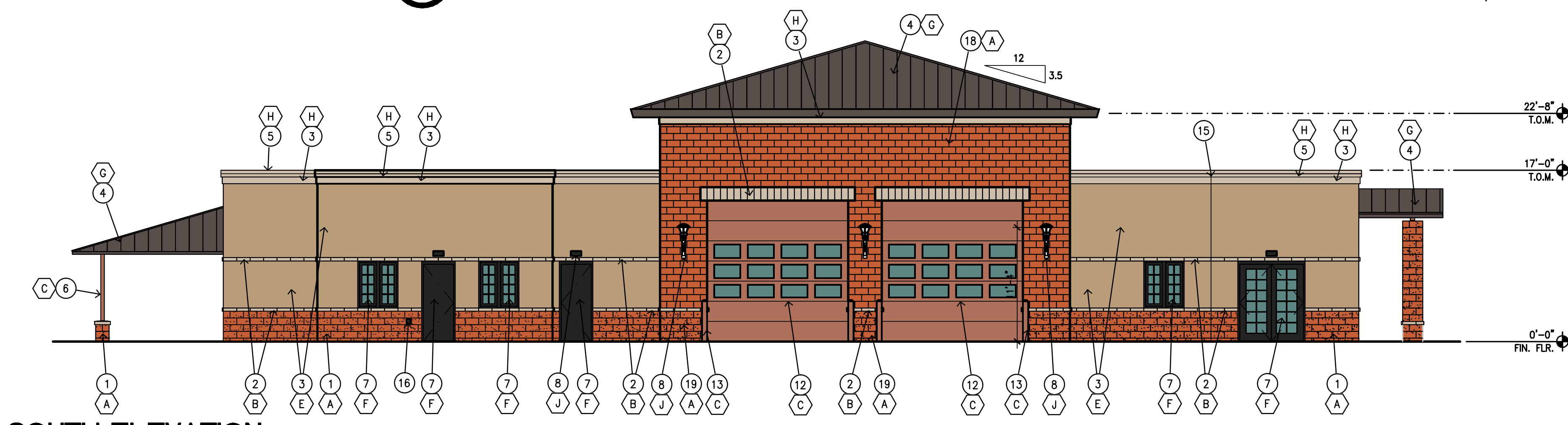


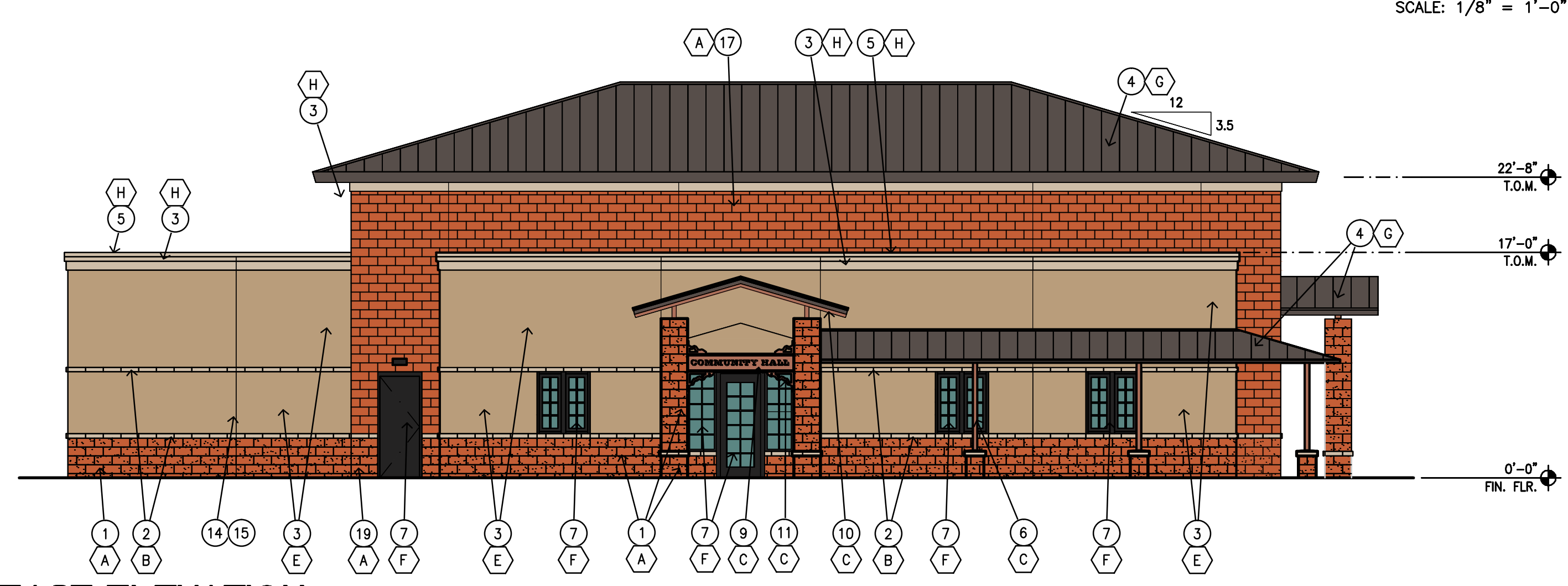
1 NORTH ELEVATION



2 WEST ELEVATION



3 SOUTH ELEVATION



4 EAST ELEVATION

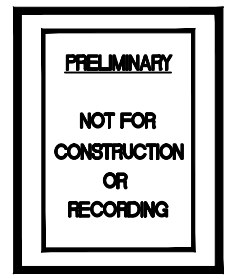
NOTES

1. 8x8x16 INTEGRAL COLORED SPLIT FACE CMU.
2. 8x4x16 CMU BAND. PAINTED.
3. INTEGRAL COLOR, 3-COAT STUCCO FINISH SYSTEM WITH SYNTHETIC COAT.
4. PREFINISHED STANDING SEAM METAL ROOFING.
5. METAL COPING CAP, PAINTED.
6. STEEL COLUMN, PAINTED.
7. DOOR/WINDOW AND FRAME, PAINTED.
8. LIGHT FIXTURE.
9. GLU-LAM BEAM SIGNAGE, PAINTED.
10. STEEL STRUCTURE, PAINTED.
11. DECORATIVE METAL BRACKET.
12. APPARATUS BAY DOORS W/SOLARBAN 60 SOLAR CONTROL LOW-E GLASS.
13. STEEL BOLLARDS, PAINTED.
14. MASONRY CONTROL JOINT. SEE --/A---.
15. STUCCO CONTROL JOINT. SEE --/A---.
16. WALL HYDRANT. SEE PLUMBING.
17. 8x8x16 INTEGRAL COLOR STANDARD CMU.
18. 12x8x16 INTEGRAL COLOR STANDARD CMU.
19. 12x8x16 INTEGRAL COLOR SPLIT FACE CMU.

COLOR SCHEDULE

- A CMU: FUEGO RED (62.25.3)
- B CMU BAND: DEC747, SAHARA
- C EXPOSED STEEL STRUCTURE/COLUMNS: DES187 WEATHERED SADDLE
- E STUCCO FIELD: DE6144 GRAHAM CRACKER
- F DOOR/WINDOW FRAMES: DARK BRONZE ALUMINUM GLASS: SOLARBAN 60 SOLAR CONTROL LOW-E GLASS
- G METAL ROOFING: AEP SPAN, COOL WEATHERED COPPER
- H METAL/STUCCO TRIM: DEC747, SAHARA
- J LIGHT FIXTURES: DARK BRONZE

CITY OF MARICOPA
CHIEF DONALD N. PEARCE F.S. 575
 45695 WEST EDISON ROAD
 MARICOPA, ARIZONA 85138



Job No.	1122
Drawn	AJD
Checked	PJ
Date	07-24-12
Revised	

95%
 SET

HDA ARCHITECTS, LLC.
 459 N. Gilbert Road, Suite C-200, GILBERT, AZ 85234
 TEL: (480) 539 8800 FAX: (480) 539 8608
EXTERIOR ELEVATIONS - COLORS



Sheet No.

A300

Plot Date: 7-25-12 09:26am Drawing scale: 1/8" By: chrylfh
 Drawing file: G:\1122 FS 575\1122_Arch\1122A300
 Last Saved: 7-25-12 09:07am

SCALE: 1/8" = 1'-0"