

CITY OF MARICOPA

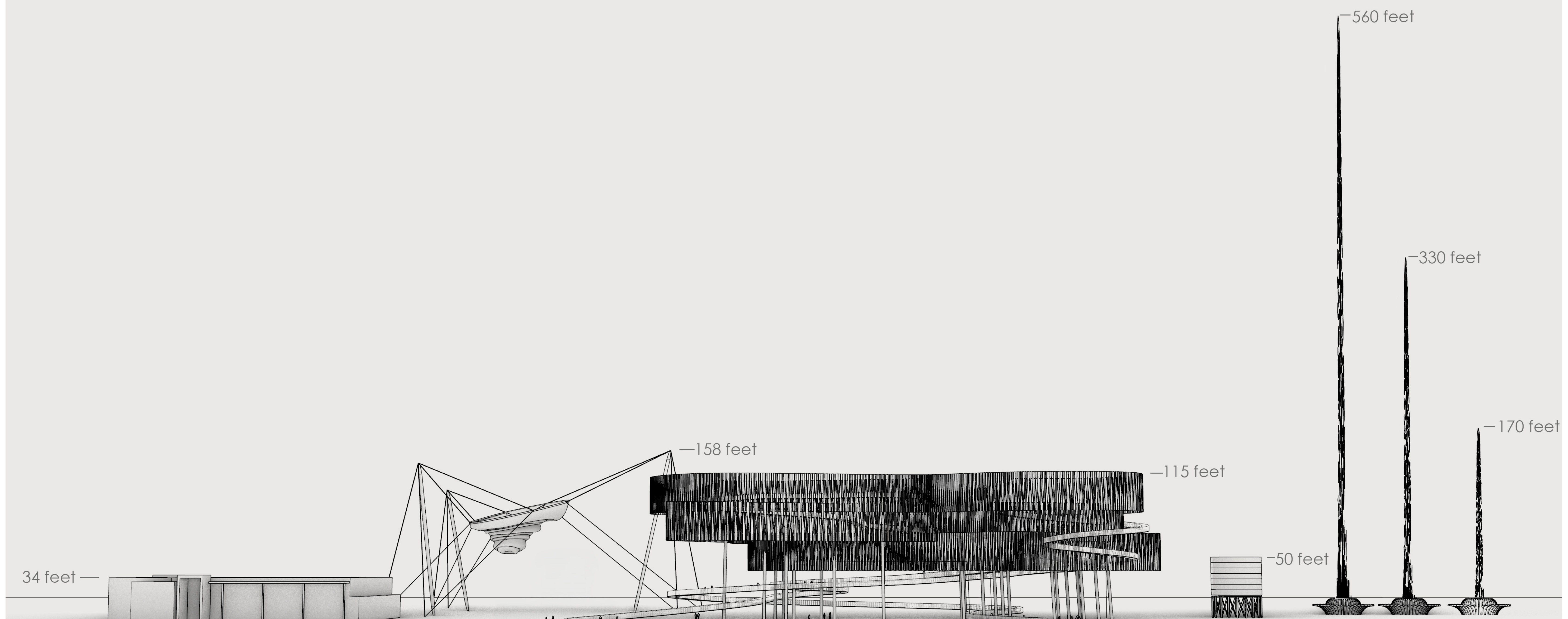
**Park 48** AT CIVIC CENTER

CONCEPTUAL IMAGERY



AUGUST, 2025





**City Hall**

Maricopa City Hall

**Janet Echelman**

City of Phoenix  
Landmark

**The Cloud**

Iconic Park Feature  
Continuation of Ribbon Trail  
1/3 mile path up and through  
Launching point for Zip Lines  
Vantage for distant views  
Shade below

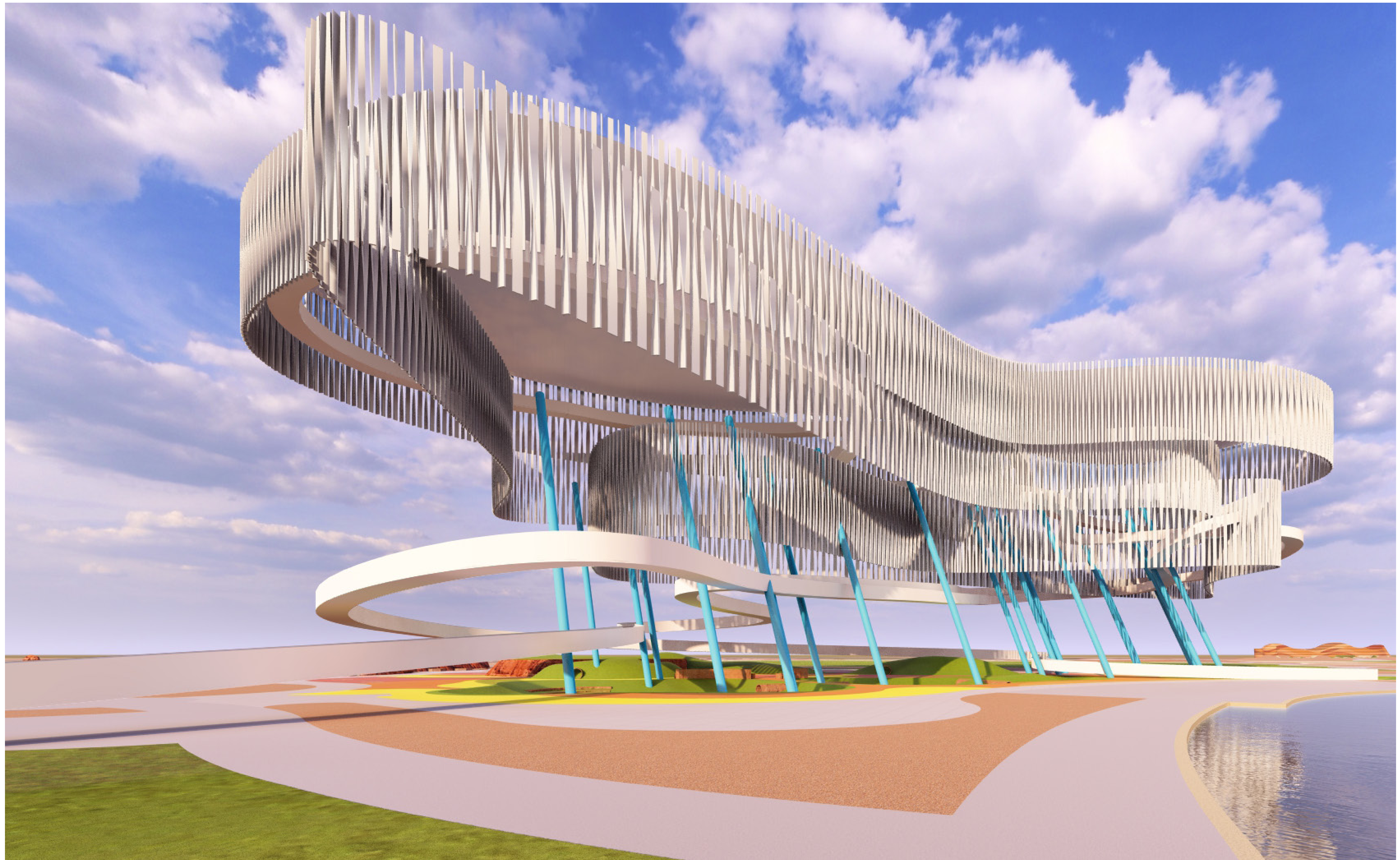
**Maricopa  
Water  
Tower**

Historical  
Maricopa  
Landmark

**Fountain Hills**

Landmark Fountain  
Variable heights  
-1 pump  
-2 pumps  
-3 pumps

















CITY OF MARICOPA

**Park 48** AT CIVIC CENTER

CONCEPTUAL IMAGERY



ARDURRA  
ARCHITEKTON

AUGUST, 2025





CITY OF MARICOPA

**Park 48** AT CIVIC CENTER

CONCEPTUAL IMAGERY

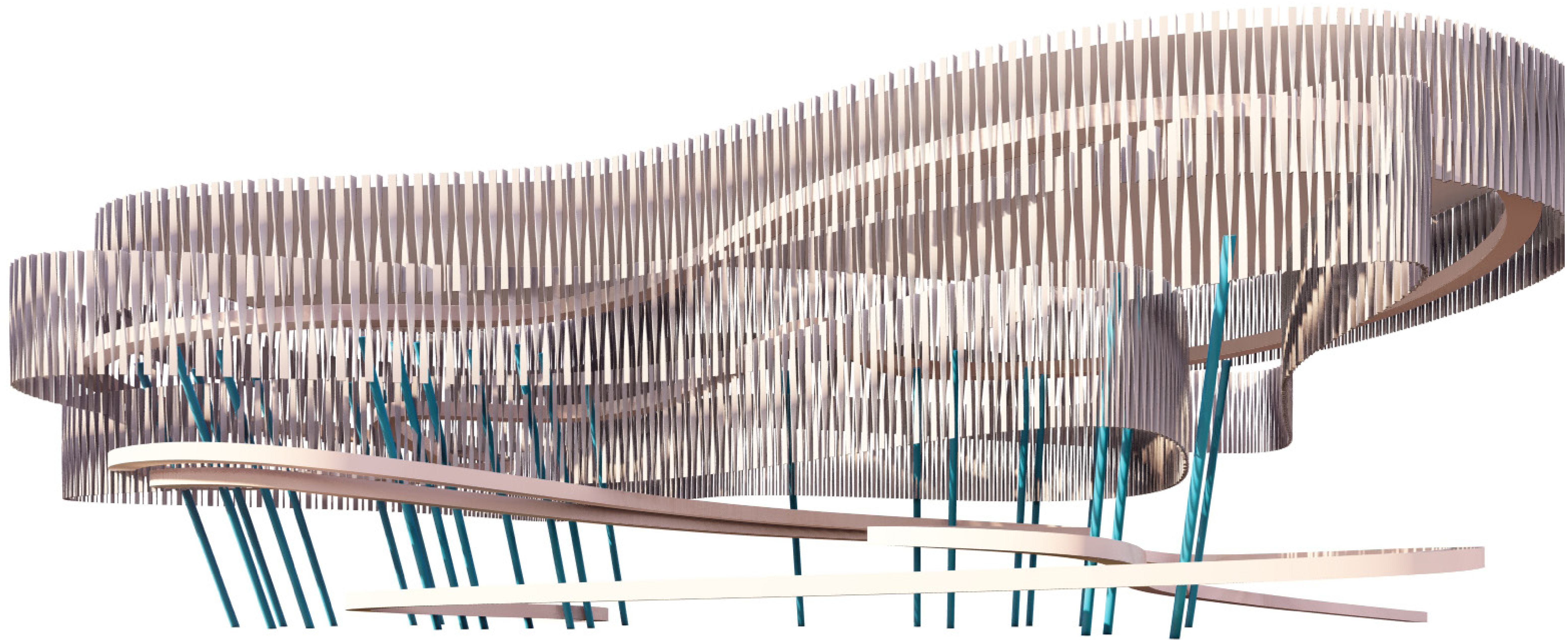


AUGUST, 2025









CITY OF MARICOPA

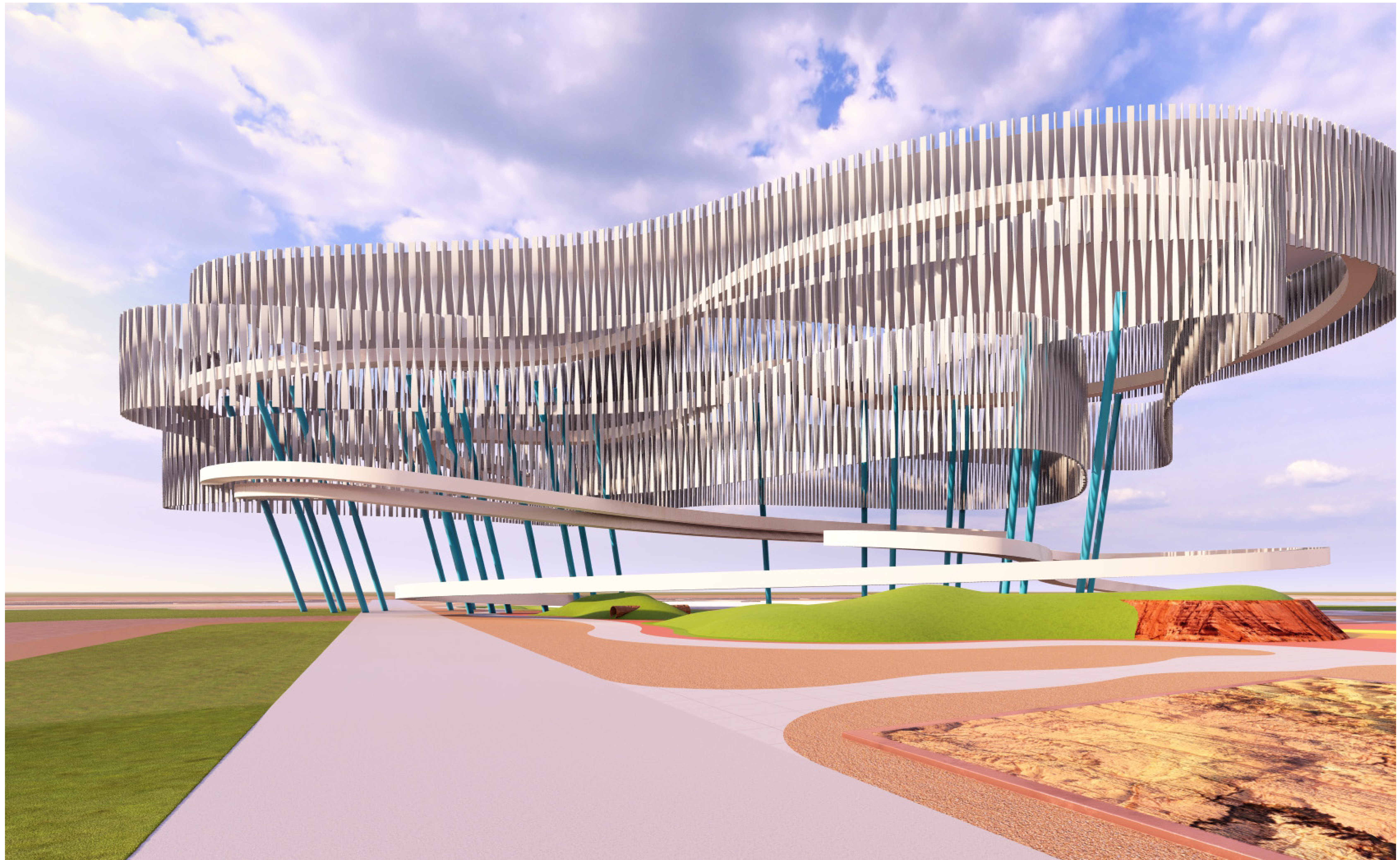
**Park 48** AT CIVIC CENTER

CONCEPTUAL IMAGERY

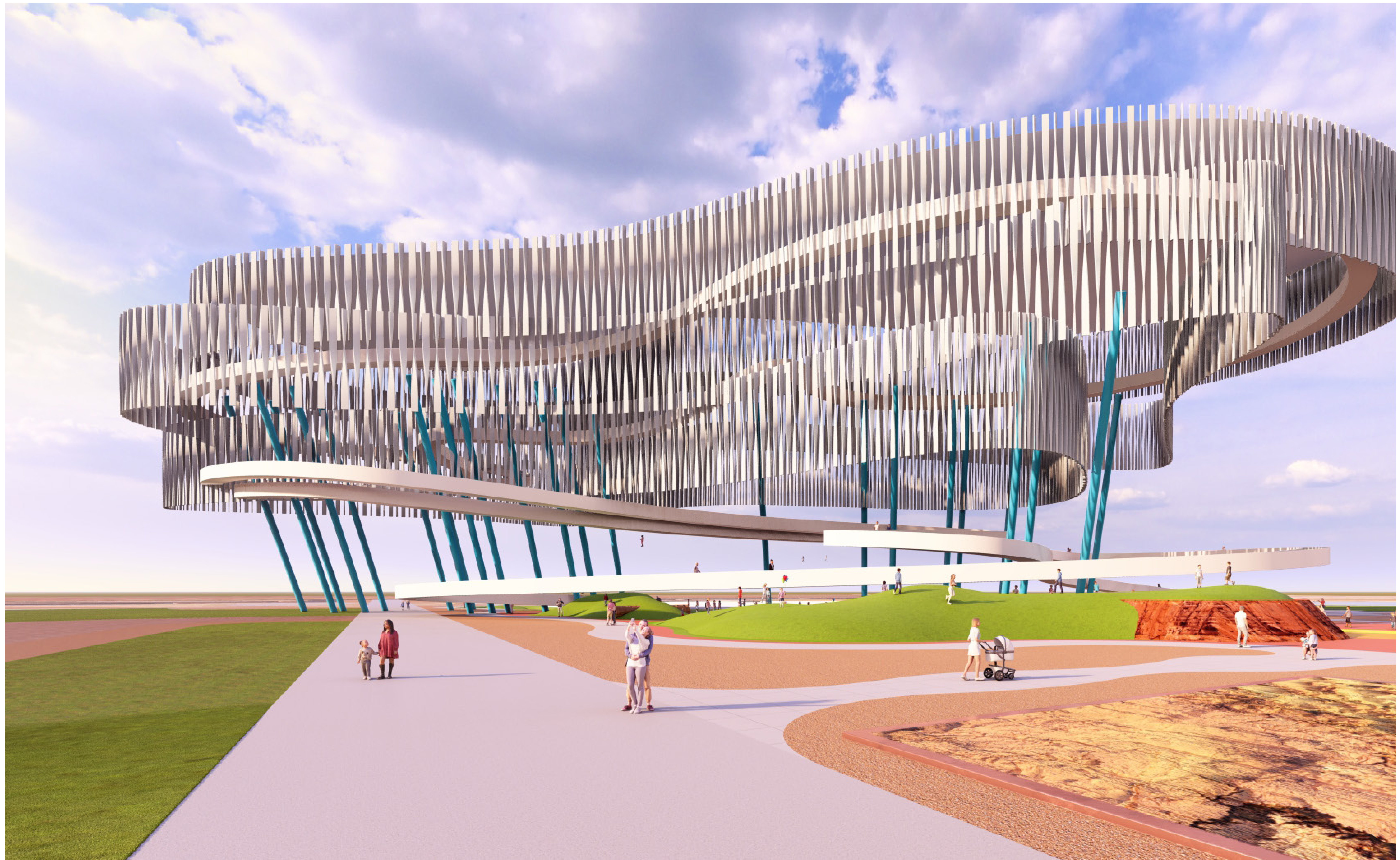


AUGUST, 2025









CITY OF MARICOPA

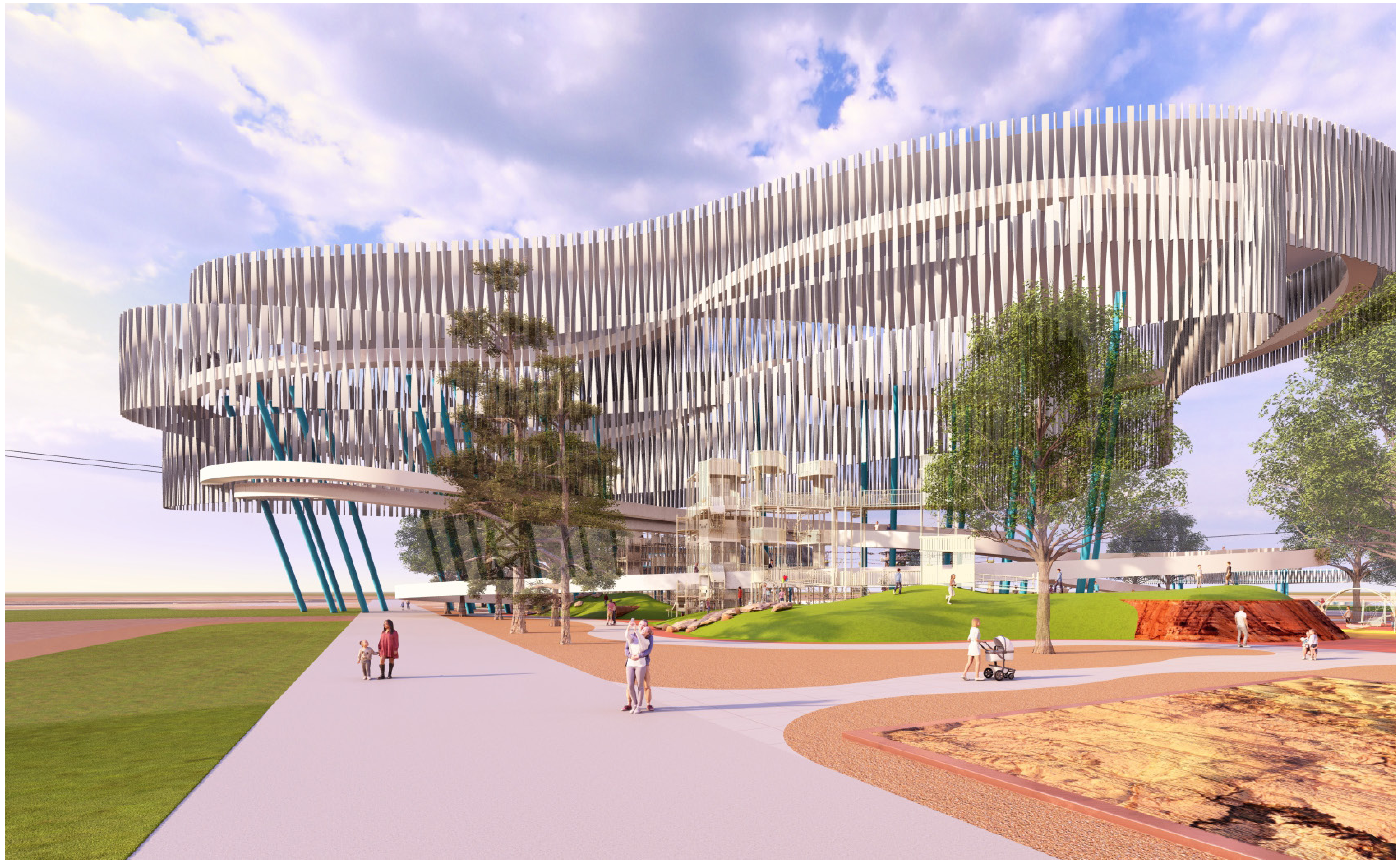
**Park 48** AT CIVIC CENTER

CONCEPTUAL IMAGERY



AUGUST, 2025

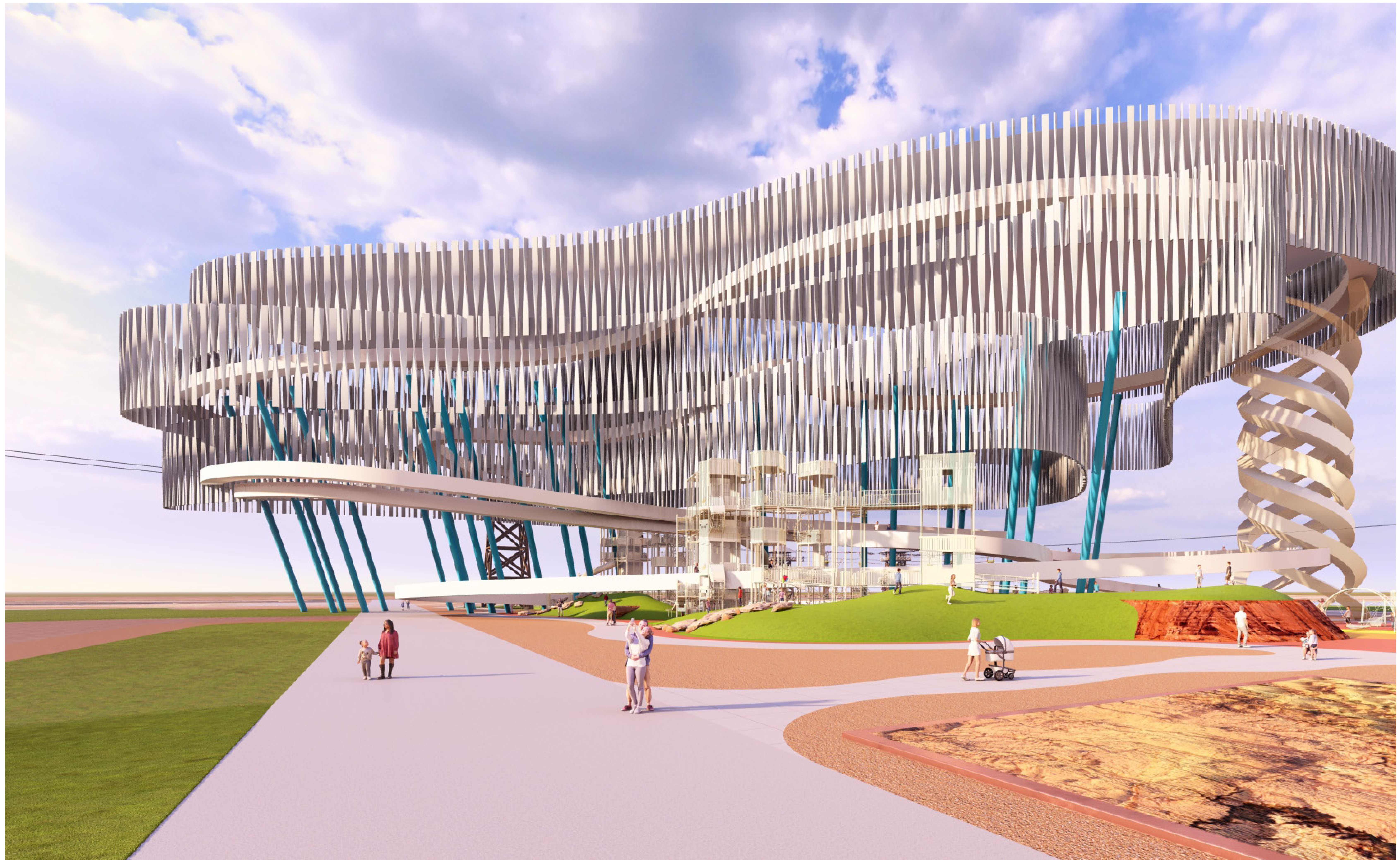
















CITY OF MARICOPA

**Park 48** AT CIVIC CENTER

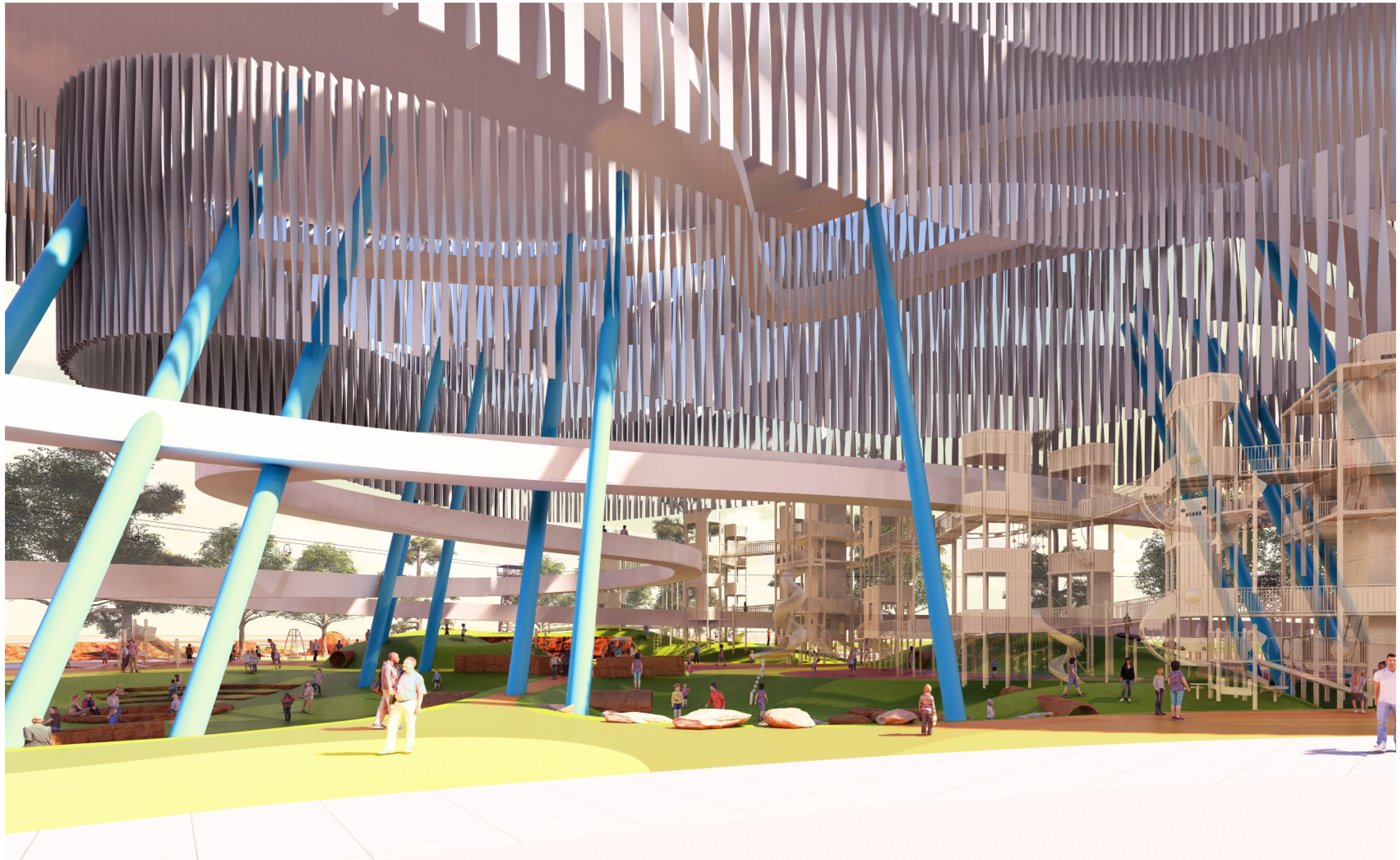
CONCEPTUAL IMAGERY



ARDURRA  
ARCHITEKTON

AUGUST, 2025





CITY OF MARICOPA

**Park 48** AT CIVIC CENTER

CONCEPTUAL IMAGERY



ARDURRA  
ARCHITEKTON

AUGUST, 2025





CITY OF MARICOPA

**Park 48** AT CIVIC CENTER

CONCEPTUAL IMAGERY



AUGUST, 2025





CITY OF MARICOPA

**Park 48** AT CIVIC CENTER

CONCEPTUAL IMAGERY



AUGUST, 2025













CITY OF MARICOPA

**Park 48** AT CIVIC CENTER

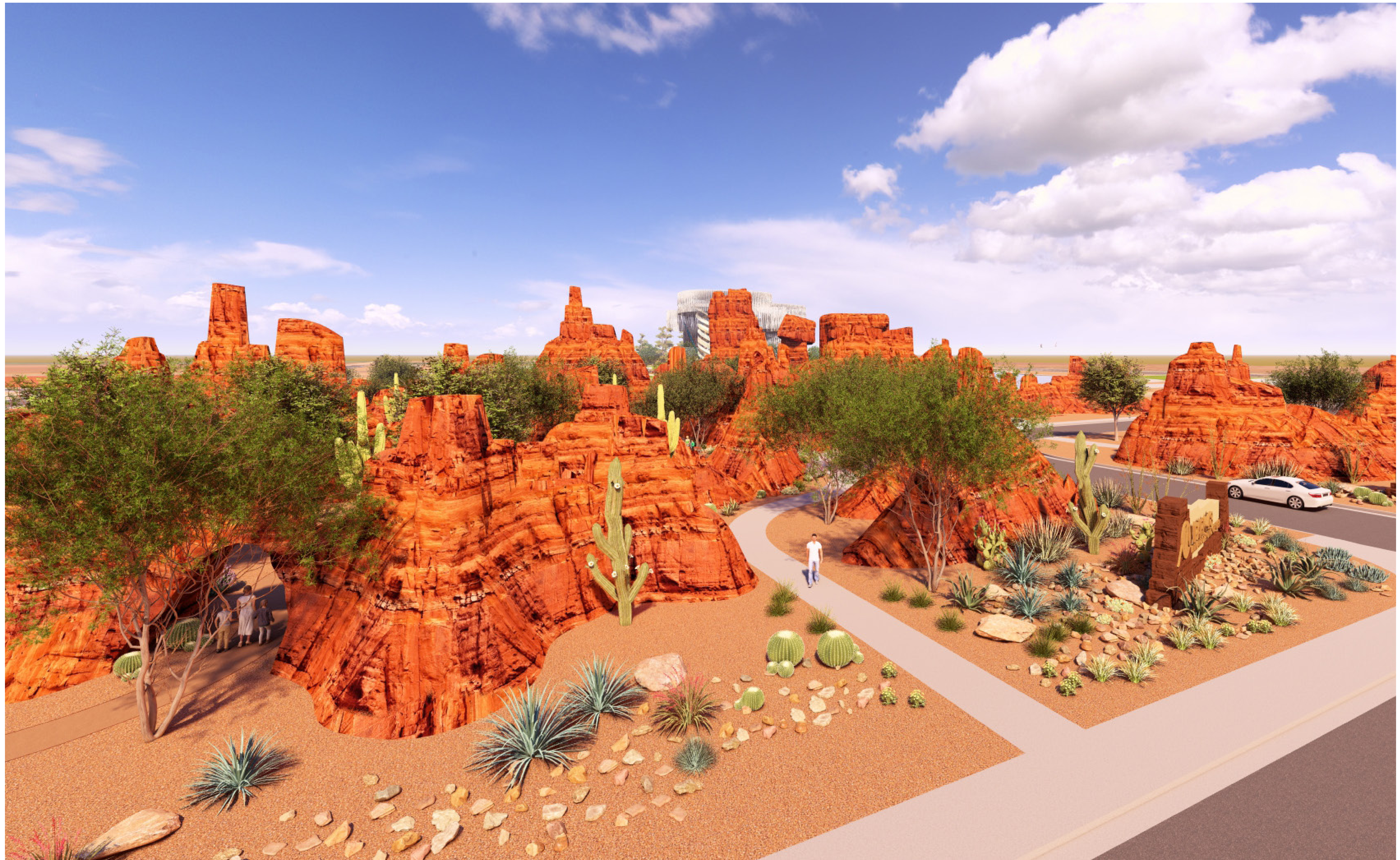
CONCEPTUAL IMAGERY



ARCHITEKTON

AUGUST, 2025





CITY OF MARICOPA

**Park 48** AT CIVIC CENTER

CONCEPTUAL IMAGERY



ARCHITEKTON

AUGUST, 2025





CITY OF MARICOPA

**Park 48** AT CIVIC CENTER

CONCEPTUAL IMAGERY



AUGUST, 2025









CITY OF MARICOPA

**Park 48** AT CIVIC CENTER

CONCEPTUAL IMAGERY



ARDURRA  
ARCHITEKTON

AUGUST, 2025





CITY OF MARICOPA

**Park 48** AT CIVIC CENTER

CONCEPTUAL IMAGERY



AUGUST, 2025





CITY OF MARICOPA

**Park 48** AT CIVIC CENTER

CONCEPTUAL IMAGERY



AUGUST, 2025





CITY OF MARICOPA

**Park 48** AT CIVIC CENTER

CONCEPTUAL IMAGERY











CITY OF MARICOPA

**Park 48** AT CIVIC CENTER

CONCEPTUAL IMAGERY



AUGUST, 2025





CITY OF MARICOPA

**Park 48** AT CIVIC CENTER

CONCEPTUAL IMAGERY



ARCHITEKTON

AUGUST, 2025





CITY OF MARICOPA

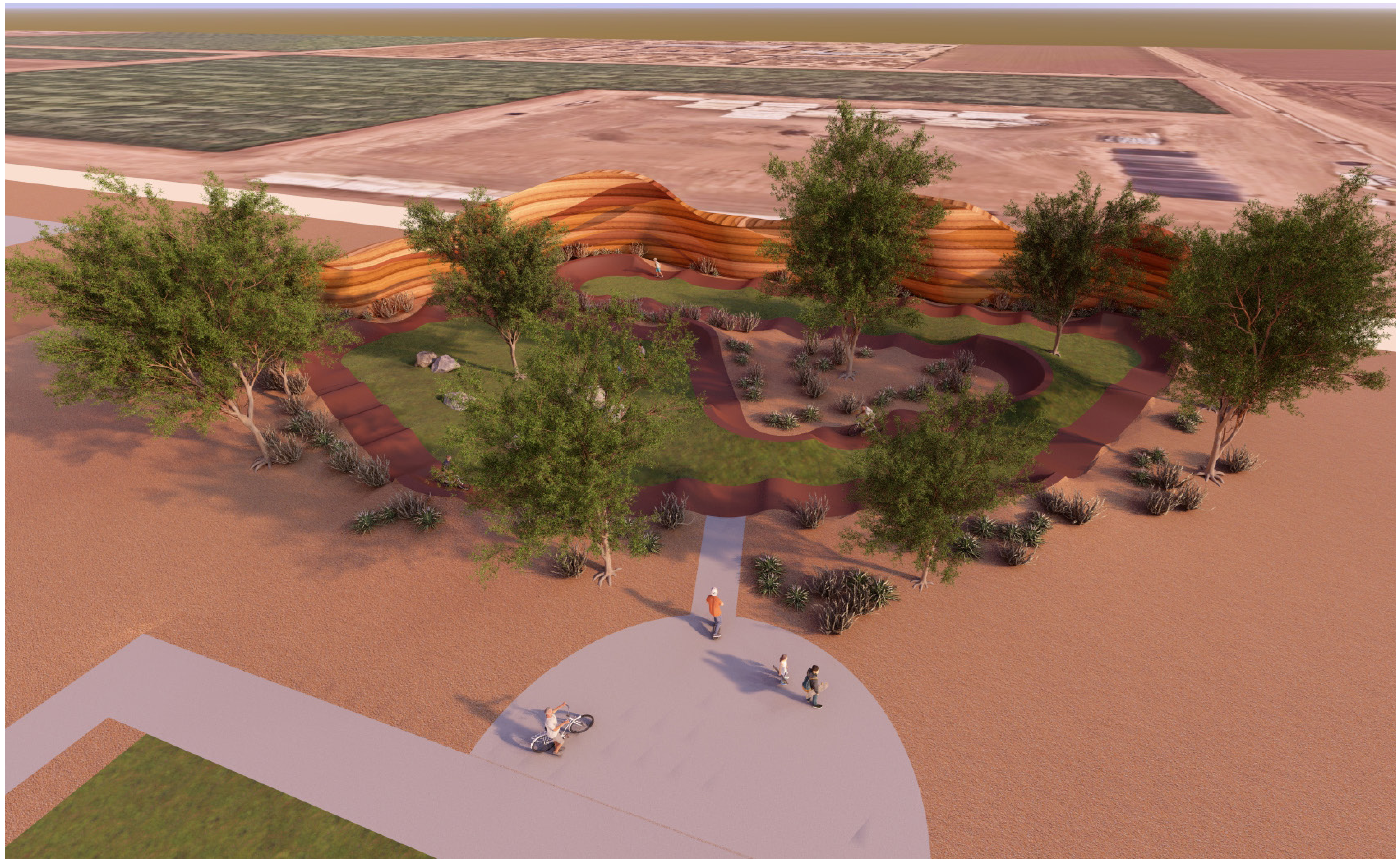
**Park 48** AT CIVIC CENTER

CONCEPTUAL IMAGERY



AUGUST, 2025





CITY OF MARICOPA

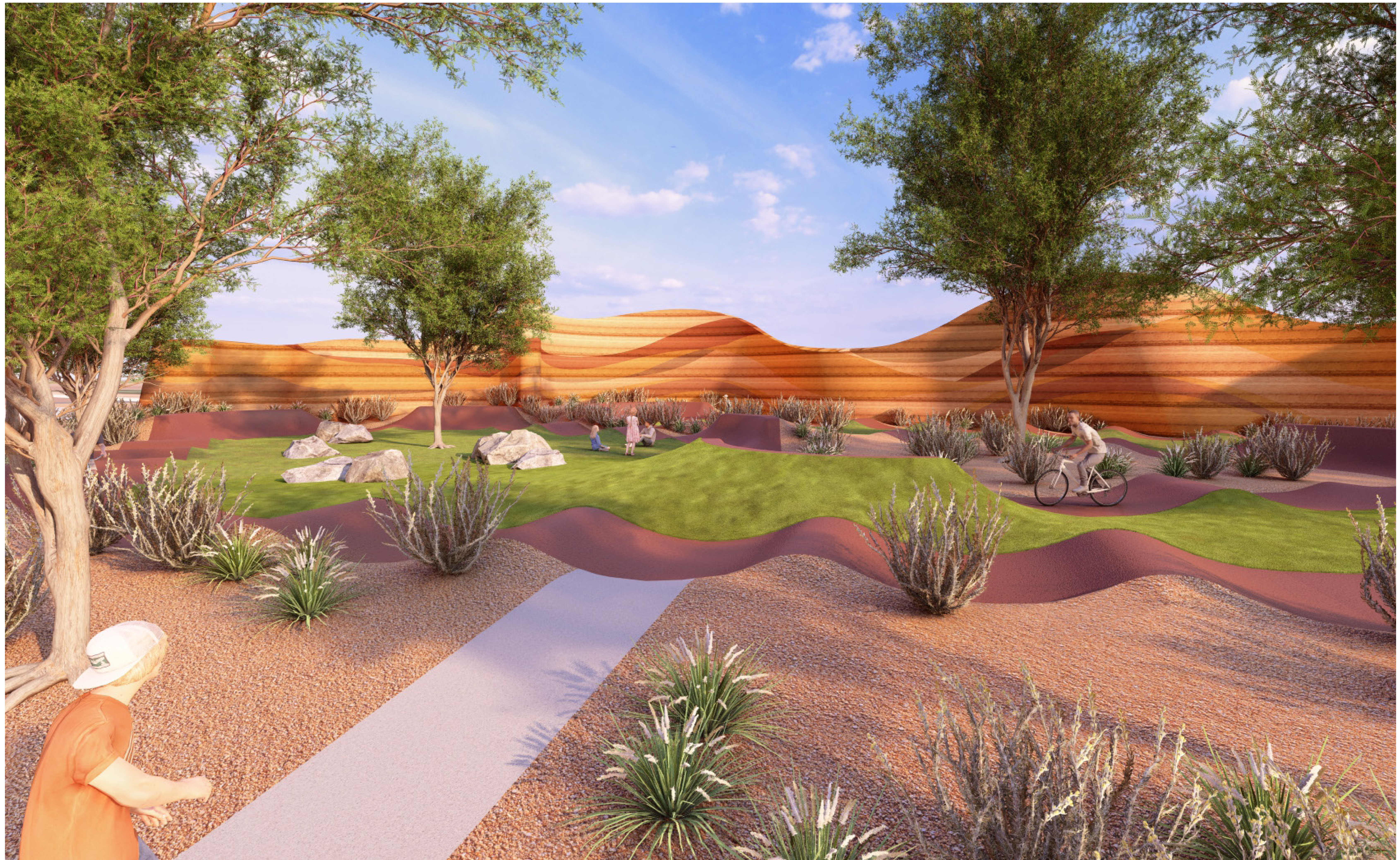
**Park 48** AT CIVIC CENTER

CONCEPTUAL IMAGERY



AUGUST, 2025





CITY OF MARICOPA

**Park 48** AT CIVIC CENTER

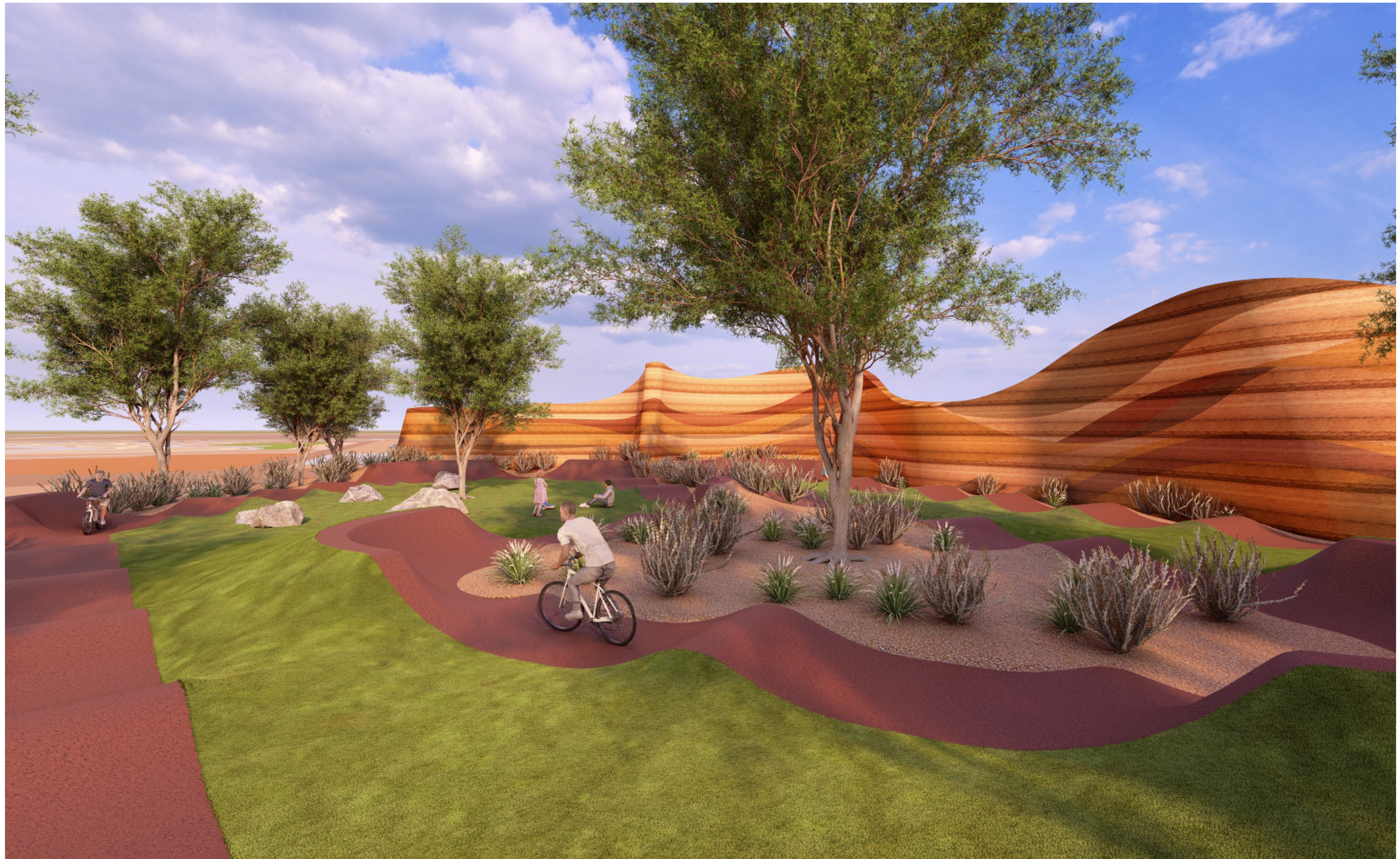
CONCEPTUAL IMAGERY



ARDURRA  
ARCHITEKTON

AUGUST, 2025





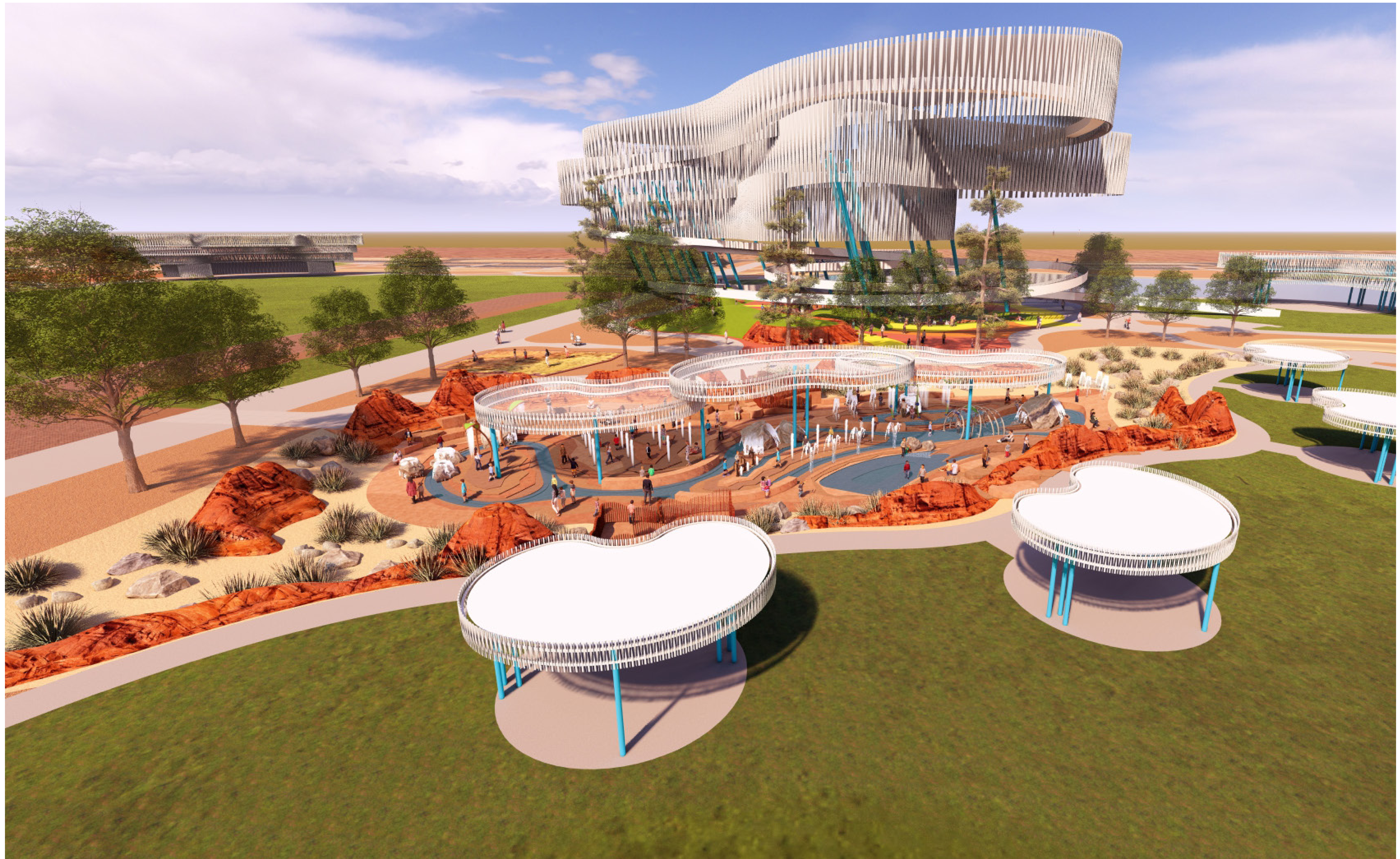
CITY OF MARICOPA

**Park 48** AT CIVIC CENTER

CONCEPTUAL IMAGERY







CITY OF MARICOPA

**Park 48** AT CIVIC CENTER

CONCEPTUAL IMAGERY



ARDURRA  
ARCHITEKTON

AUGUST, 2025





CITY OF MARICOPA

**Park 48** AT CIVIC CENTER

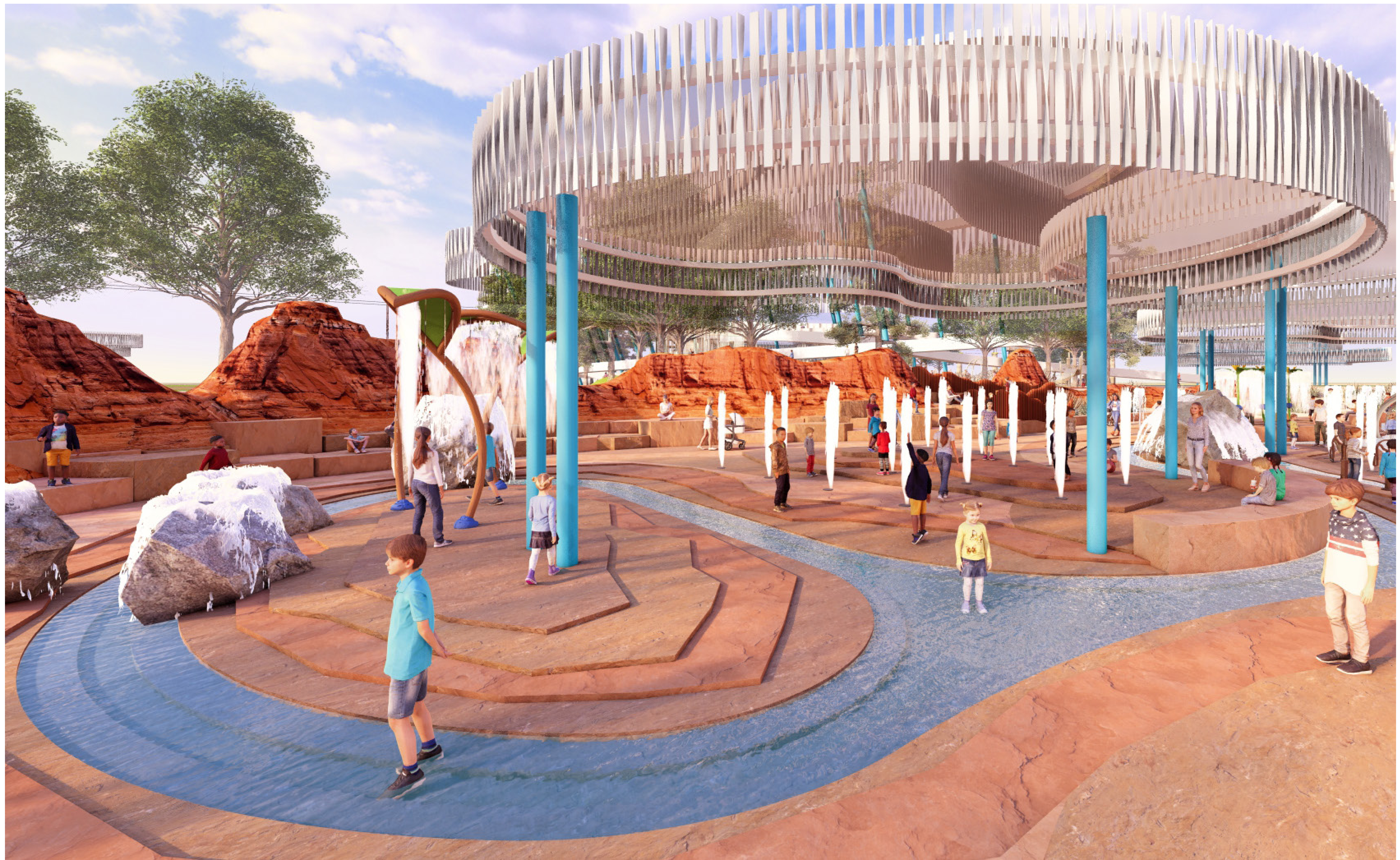
CONCEPTUAL IMAGERY



Design **ARCHITEKTON**

AUGUST, 2025













CITY OF MARICOPA

**Park 48** AT CIVIC CENTER

CONCEPTUAL IMAGERY



ARDURRA  
ARCHITEKTON

AUGUST, 2025





CITY OF MARICOPA

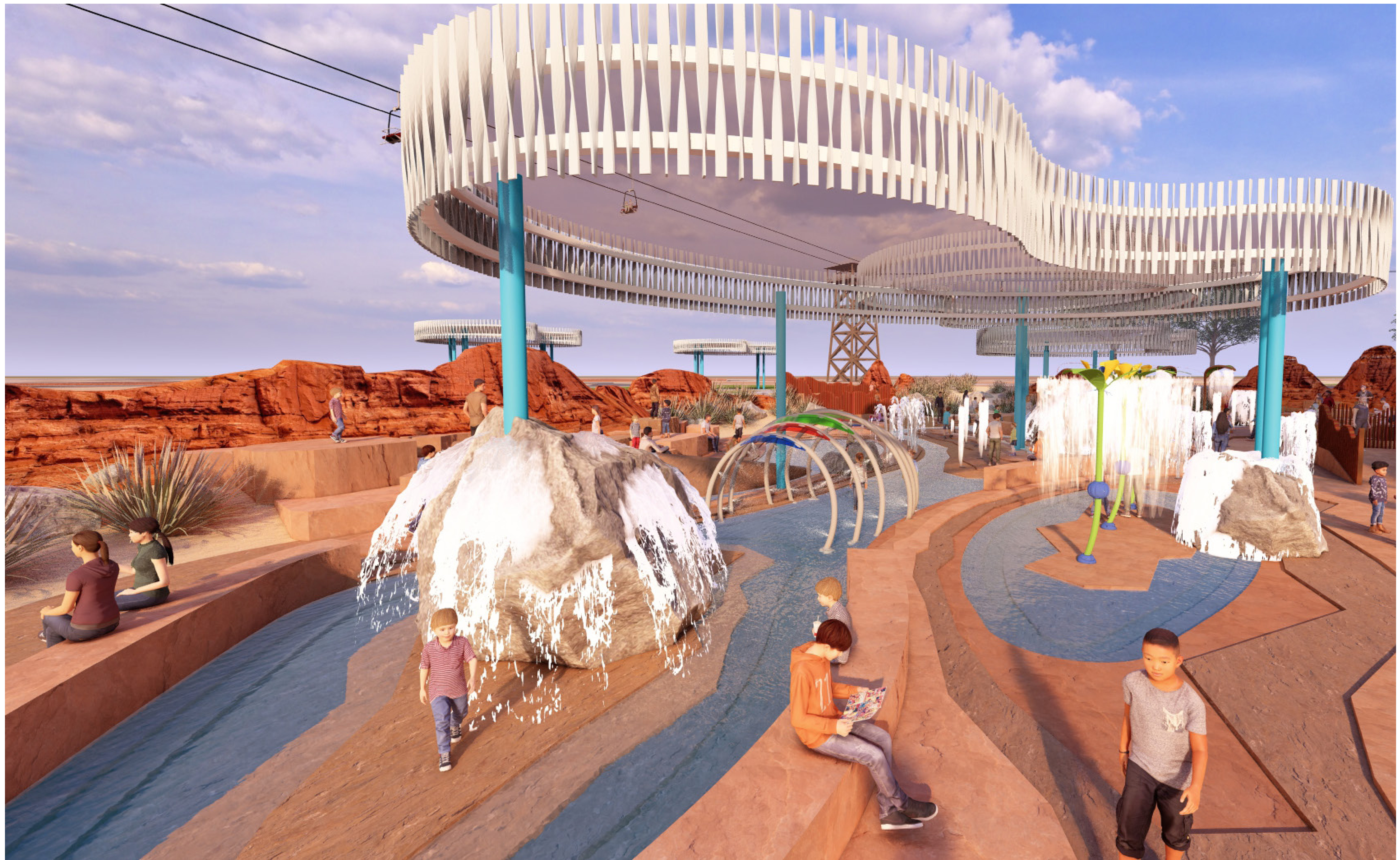
**Park 48** AT CIVIC CENTER

CONCEPTUAL IMAGERY



AUGUST, 2025





CITY OF MARICOPA

**Park 48** AT CIVIC CENTER

CONCEPTUAL IMAGERY



AUGUST, 2025





CITY OF MARICOPA

**Park 48** AT CIVIC CENTER

CONCEPTUAL IMAGERY



ARDURRA  
ARCHITEKTON

AUGUST, 2025





CITY OF MARICOPA

**Park 48** AT CIVIC CENTER

CONCEPTUAL IMAGERY



ARDURRA  
ARCHITEKTON

AUGUST, 2025







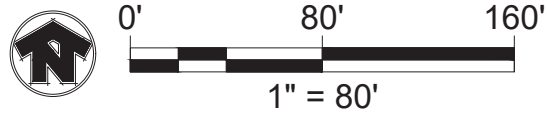




# Red Rock Bouldering Zone

The grand entrance to the Park provides an immersive visual experience. Large iconic boulder outcroppings and desert rock formations hug the road while creating interesting nooks for vegetation and opportunities for winding pathways. To add even more into the aesthetics, a large Bouldering Zone, with formations similar to Monument Valley, comes into view. A pedestrian bridge with a 'Cloud' shade structure concept lands in this zone, connecting the north and south side of W. Bowlin Rd. and allowing for access between the future development to the south and the Park.

- 1 Primary Park entrance, off W. Bowlin Rd. Turning east at the entry leads visitors to parking for the **Maricopa Wells Plaza** and retail area. Entry monuments are provided on both sides of the road
- 2 The **Stratus Pedestrian Bridge** landing within the Park with a 'Cloud' shade structure, for connections/direct access to the future development south of W. Bowlin Rd.
- 3 **Red Rock Bouldering Park** with rubberized surfacing and large climbing boulders for an exciting outdoor climbing experience
- 4 A large climbing wall with a sandstone-canyon aesthetic, providing another element/style/difficulty of climbing for users
- 5 Large rock outcroppings and boulders used as an entry feature to introduce the aesthetics and theme of the Park are scattered throughout the entry drive
- 6 **Rattlesnake Canyon Trail** cuts through the backside of the rock outcropping area at the entrance for a more natural bouldering and climbing experience with vegetation and slot-canyon aesthetics
- 7 One of the six **Zip Line Fire Towers**, with views from the entry drive, peaks between the rock climbing boulders and the Stratus Pedestrian Bridge 'Cloud' structure nearby, providing an 'in the sky' feeling
- 8 **Bell Rock Picnic Ramadas** with picnic benches and litter receptacles
- 9 A section of the 'Arroyo' runs past the bridge landing and Zip Line Fire Tower for interest and sustainable stormwater retention through the space
- 10 Parking lot entrances from the primary Park entrance drive
- 11 Connection from **Red Rock Bouldering Zone** to **Maricopa Wells Lake** and **Maricopa Wells Plaza**



CITY OF MARICOPA

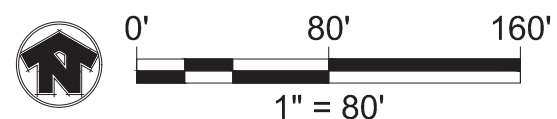
**Park 48** AT CIVIC CENTER

PARK ZONE NARRATIVE



AUGUST, 2025





# Slide Rock Splash Zone

The destination splash pad is recessed and situated within a section of the arroyo, providing an immersive canyon-like experience. Stairs along the east and west of the splash pad provide comfortable seating opportunities. Ramps are provided for accessibility. Elevation changes provide opportunities for slides that mimic the natural forms of Slide Rock. A wading pool with a slide, spray equipment, and a large shade element is provided. Covered picnic areas are located nearby in natural turf.

- ① Natural turf for functionality adjacent to the parking lot
- ② Stairs down the arroyo to the **Slide Rock Splash Zone**, to be used for seating and canyon-style aesthetics with pockets of vegetation and boulders scattered throughout the space
- ③ **Oak Creek Wading Pool** within the splash pad, with a slide, adjacent to bench seating
- ④ Ramp for accessible entry down to the splash zone
- ⑤ In-ground jet/spray equipment within the splash zone
- ⑥ Large splash equipment and water tables/games along the play creek within splash zone
- ⑦ Landscape area for plant material and trees to add to the canyon aesthetic
- ⑧ **Oak Creek Picnic Ramadas** with tables, trash receptacles, and charcoal grills that can be rented out for events
- ⑨ Central pedestrian spine, connecting major elements within the Park to the Maricopa Civic Center to the west and future development to the east
- ⑩ Restroom structure
- ⑪ Large interactive State of Arizona Relief Map with geographic features, QR codes, and lit elements for photo and educational opportunities
- ⑫ One of the six **Zip Line 'Fire Towers'** near the entry monument on the western end of the pedestrian spine
- ⑬ Interactive 'Cloud' shade structure within the **Mogollon Rim Playground**



# Mogollon Rim Playground

The iconic, inclusive destination playground is in the center of the Park, off the main pedestrian spine. Large pine and shade trees intertwine with ramps coming off of the 'Cloud' shade structure for an immersive experience. A massive multi-tiered treehouse play structure is connected by bridges and nets, nestled within the forests of the Mogollon Rim in northern Arizona. Space underneath the 'Cloud' structure is a respite for all ages. A relaxing sensory play space is provided adjacent to the playground at the Fossil Creek Play Space. Restrooms, natural turf for play, and family/group dining ramadas are nearby for ease of access and comfort.



- ① The 'Cloud' Shade Structure, with levels of accessible ramps looping between posts, indicative of monsoon rains. Interactive screens and exciting lighting elements can be seen from the entire Park. The **'Rainburst'** is connected to the structure and would be the largest outdoor spiral playground slide in Arizona
- ② One of the six **Zip Line 'Fire Towers'** within the playground. The space beneath the tower will include a zip line play element for children
- ③ The **Fossil Creek Play Space** is an extension of the playground, with musical/interactive equipment for children and adults, surrounded by lush plantings and large shade trees with hammock seating and public art installations
- ④ Group picnic ramadas can be rented out for events. All located along an accessible path with sandblasted and integral colored patterns/motifs
- ⑤ A portion of the massive inter-connected treehouse play structure, mimicking natural materials. Taller towers/areas of the treehouse equipment are located outside of the 'Cloud' shade structure
- ⑥ **Mogollon Rim Lakeside Ramada** with café tables and swinging benches for views of the lake. Accessible to the playground with a gate at the playground fence
- ⑦ Central pedestrian spine, connecting the playground to the **Mesquite Bosque Seating Area** where food truck events occur and the **Sunset Point Event Lawn**
- ⑧ **Sycamore Creek Group Picnic Ramadas** at islands within the arroyo, with charcoal grills, picnic tables, and litter receptacles
- ⑨ A large vertical sculptural element/monument acts as a wayfinding backdrop to the playground, and is an ode to the 'Five C's' of Arizona
- ⑩ Viewing and lounge area underneath the 'Cloud' shade structure, with rubberized surfacing and artificial turf seating areas. Workstations and charging ports are provided for work or study



0' 80' 160'  
1" = 80'



CITY OF MARICOPA

**Park 48** AT CIVIC CENTER

PARK ZONE NARRATIVE

AUGUST, 2025

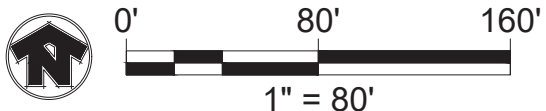




# Maricopa Wells Lake

The 3.4-acre fishing lake serves as the primary source of irrigation for the natural turf areas and planting areas. The lake will be stocked for fishing.

Natural and concrete lake edges are provided. Two fishing docks on opposite sides of the lake provide more fishing opportunities. Nighttime lighting elements will illuminate the lake.



- 1 A 12' wide concrete boardwalk circles the lake and mimics the "Ribbon." Seating elements, hardscape details like sandblasted or stamped patterns, public art elements, and pockets of landscape areas with tree canopies create interest for lakeside strolls
- 2 **Maricopa Wells Lake**, named after the first settlement in the City of Maricopa. The lake will be used to irrigate the Park and provide views from restaurants and shops at the **Maricopa Wells Plaza**
- 3 A primary fishing dock, also used for fish re-stocking, with vehicular access from the adjacent parking lot. A secondary fishing dock, located on the opposite end of **Maricopa Wells Lake**, in close proximity to smaller intimate picnic areas nestled against the arroyo
- 4 **Sycamore Creek Group and Picnic Ramadas** within the arroyo, complete with charcoal grills, picnic tables, and litter receptacles
- 5 Semi-natural lake edge landscaped area at the small picnic ramadas. Bench seating is provided for fishing and/or respite
- 6 Natural lake edge landscaped area with vegetation and clearings for fishing access. Users are able to bring their own seating or use boulders for a more natural experience under the trees
- 7 **Sierra Estrella Agility Course and Zip Line** concessionaire. Zip line towers themed to resemble fire towers seen in the mountains of Arizona. Four additional towers are scattered throughout the Park for a thrilling experience
- 8 Single or group picnic ramadas with litter receptacles and charcoal grills, located in close proximity to **Maricopa Wells Lake**.
- 9 Additional retail pad space for future development, as needed, at **Maricopa Wells Plaza**
- 10 Large-group 'Cloud' ramada shade structure with stage and natural turf at the **Maricopa Wells Event Space**, to be used for smaller performances or markets/festivals
- 11 **Maricopa Wells Plaza** with retail space, tot lot, and outdoor dining area adjacent to food/drink concessionaires
- 12 **Mogollon Lakeside Large-group Ramada** with café table seating, and swinging benches facing the lake for respite and views





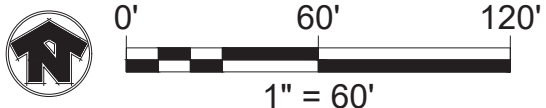
# Sunset Point Event Lawn

Over 221,000 S.F. of multi-use space for music festivals and large events.

A world-class 'Cloud' amphitheater is the iconic element of this space.

The adjacent arroyo within the "Ribbon" provides pockets of respite and seating. A food truck space to the south provides concessions. A large "5 C's" art piece is at the entrance of the Event Lawn, accessed from the major pedestrian spine and parking lots, and acts as a wayfinding element.

- 1 Views of the large art sculpture within the **Huhugam Cultural Plaza** as the backdrop to the Event Lawn
- 2 Elevated stage with stairs and ramps at the 'Cloud' amphitheater structure. Lighting effects within the cloud structure create interest for night events
- 3 Arroyo at the "Ribbon" for stormwater conveyance surrounding the event lawn, bisected by the amphitheater/stage. Aesthetics will mimic a natural desert arroyo with vegetation and boulders. Educational signage included
- 4 **Agua Fria Picnic Area** at islands within the arroyo, each with picnic tables, litter receptacles, and charcoal grills. Covered picnic spaces are reservable for a fee during larger events
- 5 "Ribbon" paving hardscape with arroyo; including colorful concrete or lithomosaic detailing, stamped concrete, and sandblasted patterns that intertwines with seating elements, landscape areas, and public art
- 6 A large vertical sculptural element/monument acts as a wayfinding feature to the center of the Park and is an ode to the "Five C's" of Arizona.
- 7 Multi-use space with stabilized decomposed granite for food truck parking or farmers market setup
- 8 **Mesquite Bosque Seating Area** with moveable café tables for outdoor dining
- 9 Central pedestrian spine, connecting major elements within the Park to the Maricopa Civic Center to the west and future development to the east
- 10 Direct vehicular access to stage ramp from parking lot for event setup
- 11 Flat natural turf at **Sunset Point Event Lawn** with structural soils, providing space for heavier equipment for fairs or specialty events
- 12 Large interactive State of Arizona Relief Map with geographic features, QR codes, and lit elements for photo and educational opportunities. Located between the **Slide Rock Splash Zone** and **Mogollon Rim Playground**
- 13 Interactive 'Cloud' shade structure within the **Mogollon Rim Playground**



CITY OF MARICOPA

**Park 48** AT CIVIC CENTER

**PARK ZONE NARRATIVE**

AUGUST, 2025



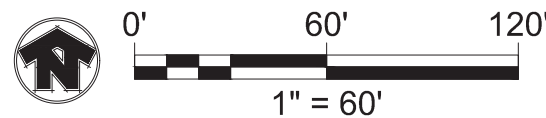


# North Country Sports Plaza

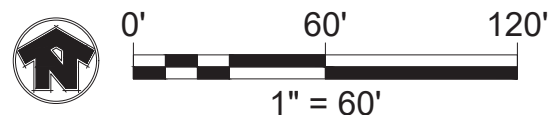
A comfortable and visually stunning space for outdoor recreation which contributes to the community's health and wellness in positive ways. Sport courts surrounded by painted murals, screen wraps, and specialty hardscape details immerse users in the stunning canyons of Arizona, drawing in visitors to make use of the amenities.



- 1 Ponderosa pine forest mosaic or painted mural along entirety of wall as aesthetic screen / backdrop for the North Country Sports Plaza
- 2 The **Four Peaks 'Extreme Ninja' Course** with nature-themed equipment to blend with the northern Arizona backdrop and low-desert pine and deciduous tree varieties within the landscape area
- 3 The **Kaibab Basketball Courts** complete with courtside seating and colors to complement the surrounding aesthetics and ponderosa pine backdrop
- 4 **Antelope Canyon Pump Track** surrounded by berms/mounds resembling the smooth sandstone of Antelope Canyon with landscape plantings to soften the space and provide shade
- 5 Shade structures with weathered steel and gabion posts resemble styles commonly seen in National, State, and County parks. Seating is provided to create a comfortable space to rest and for views of the courts and pump track
- 6 A restroom structure is centrally located in close proximity to all courts. Materials and finishes will match the adjacent shade structures for a unified look throughout the sports plaza
- 7 The **Painted Desert Volleyball Courts** including four courts for tournaments and group events. Fencing associated with the courts will include themed panoramic wraps
- 8 The **Blue Range Dog Park** is divided into multiple spaces to accommodate small/large and high/low energy dogs. Large shade trees, boulders, mounds, and agility course equipment are provided for both training opportunities and play
- 9 12 **Grand Canyon Pickleball Courts** complete with wraps/screens of the south rim surrounding each court for visual interest
- 10 The **Juniper Yoga Lawn** acts as a multi-use natural turf space and as a buffer between the Huhugam Cultural Plaza and Sports Plaza. These spaces may be rented out as outdoor class space for health/wellness use
- 11 A large and iconic 'Cloud' amphitheater structure over the stage area at **Sunset Point Event Lawn**







## Maricopa Courtyard

A formal event space which can be rented out for weddings, quinceañeras/birthdays, city/corporate events/fundraisers, and outdoor or indoor public market space. Aesthetics will resemble materials and finishes classically seen in the southwest. Adobe structures, wooden pergolas, and colorful painted tiles are a few of the architectural details which create an iconic backdrop for special occasions.

- ① Natural mounds and boulders with vegetation to screen parking
- ② Wooden gazebo structure for formal events and photography opportunities at the rose garden
- ③ Stabilized decomposed granite for seating or table setup
- ④ Large flat area of natural turf for tent, stage, and/or seating setup
- ⑤ **Maricopa Courtyard Venue** with kitchen, restroom, office, and open event space
- ⑥ Maintenance building and security office
- ⑦ Maintenance yard for equipment
- ⑧ Event overflow at **Juniper Yoga Lawn**

## Huhugam Cultural Plaza

Displays depicting the art and culture of the historic and current indigenous communities in Arizona. Views of public artwork at the plaza are centered as a backdrop to the Sunset Point Event Lawn. The Cultural Plaza may be used for community gatherings, performances, or as a place of respite and reflection.

- ⑨ The arroyo within the "Ribbon" for site stormwater conveyance and visual interest
- ⑩ **Sierra Estrella Zip Line Tower** - one of six towers within the Park
- ⑪ Raised angled planters with cantilevered seating along the Ribbon's arroyo
- ⑫ Seat walls adjacent to planting areas with views of the Event Lawn or art pieces within the **Huhugam Cultural Plaza**
- ⑬ Large landscape area for revolving public art sculptures by local indigenous artists
- ⑭ Large, artistic, custom shade structure with a copper finish
- ⑮ Tall walls with mounted graphic wraps and night lighting effects
- ⑯ Bridge at the arroyo to connect the Maricopa Courtyard to the Huhugam Cultural Plaza and Sunset Point Event Lawn