

Anderson Farms - Phase 1B

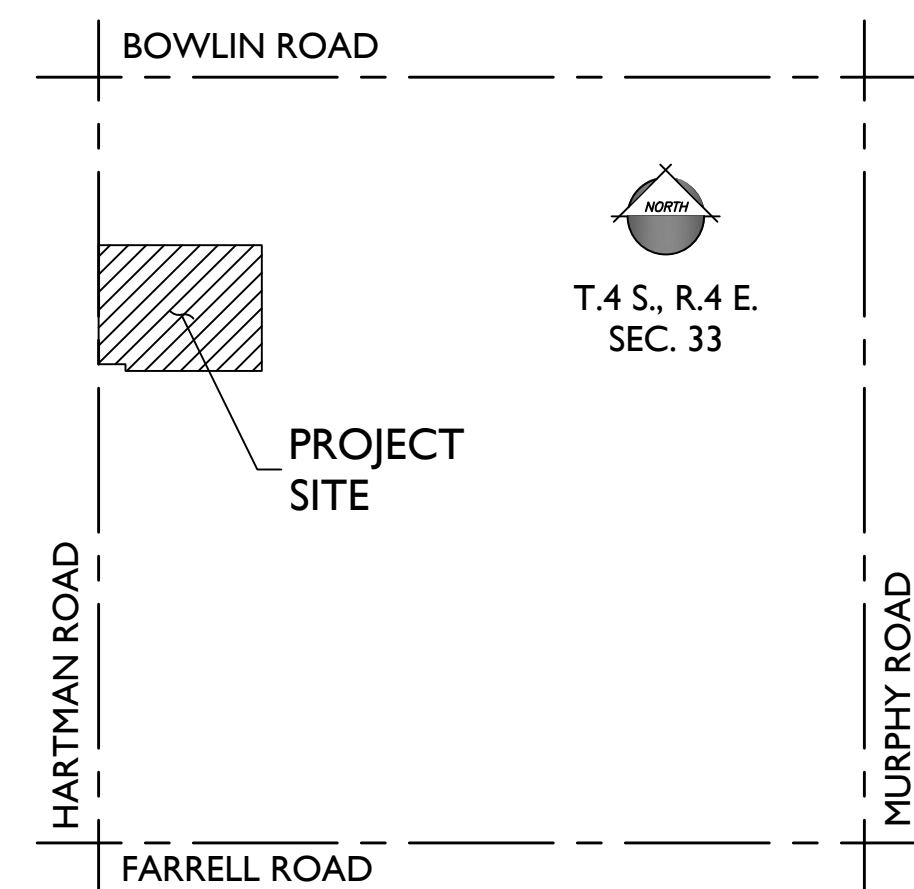
City of Maricopa, Arizona

Preliminary Landscape Design Package

Submitted: March 8, 2019
 Resubmitted: June 18, 2019

VICINITY MAP

N.T.S.



PROJECT TEAM

DEVELOPER:
MARBELLA HOMES
 18835 N. THOMPSON PEAK PKWY, STE 215
 SCOTTSDALE, AZ 85255
 TEL: (480)-420-3355
 CONTACT: JOHN WITTRICK

LANDSCAPE ARCHITECT:
EPS GROUP, INC.
 1130 N ALMA SCHOOL RD, SUITE 120
 MESA, AZ 85201
 TEL: (480) 503-2250
 CONTACT: SHAWN BYRON, RLA
 EMAIL: Shawn.Byron@epsgroupinc.com

CIVIL ENGINEER:
EPS GROUP, INC.
 1130 N ALMA SCHOOL RD, SUITE 120
 MESA, AZ 85201
 TEL: (480) 503-2250
 CONTACT: DAN AUXIER, PE
 EMAIL: Dan.Auxier@epsgroupinc.com

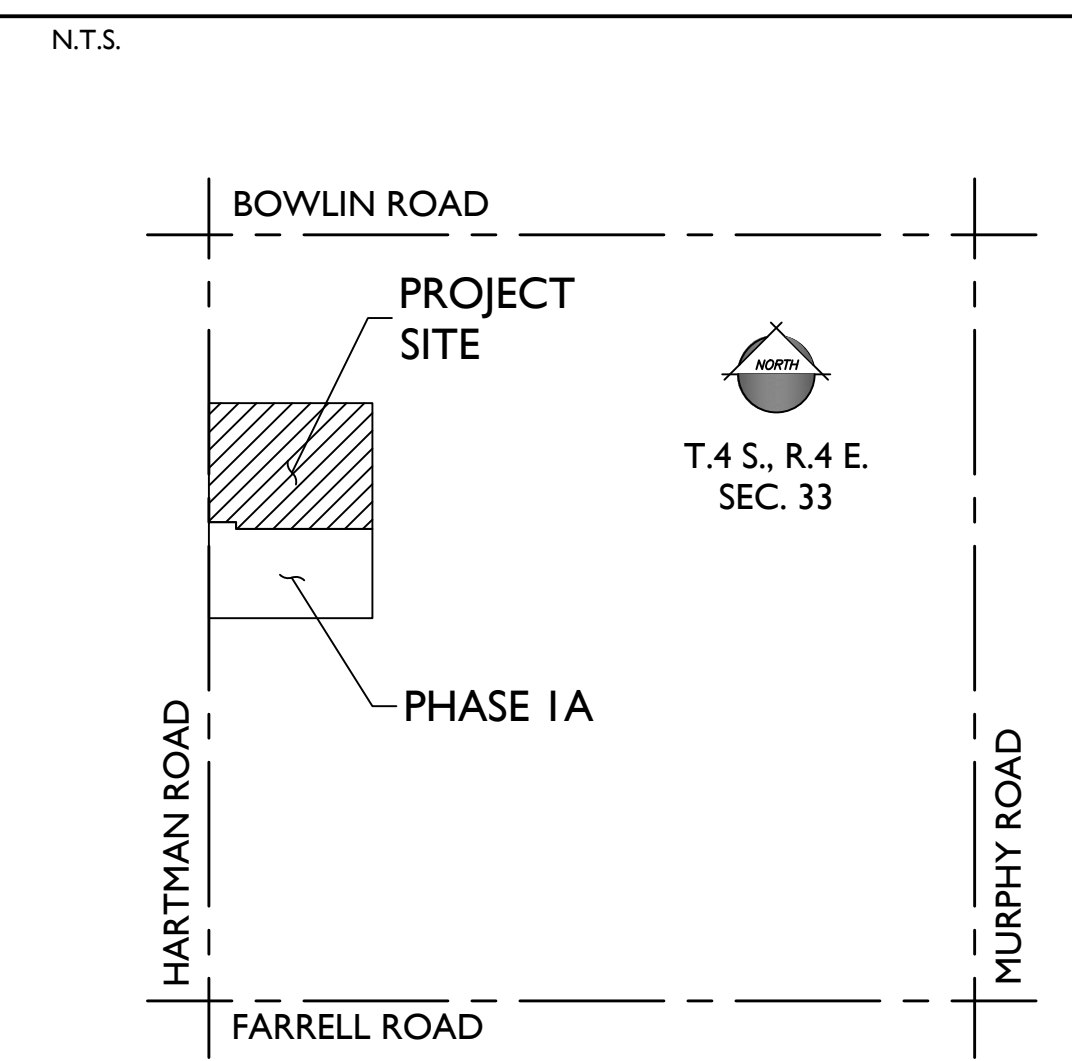




KEYNOTES

- ① CORNER MONUMENT
- ② 8ft CONCRETE TRAIL
- ③ STABILIZED DG TRAIL
- ④ BENCH/ SEATING AREA
- ⑤ CHANNEL
- ⑥ TURF AREAS
- ⑦ SIDEWALK CONNECTION

VICINITY MAP



PROJECT DATA

A.P.N. CURRENT USE: A PORTION OF 502-03-015H AGRICULTURAL
 GENERAL PLAN LAND USE: MASTER PLANNED COMMUNITY
 EXISTING ZONING: GENERAL RURAL (GR)
 PROPOSED ZONING: RS-5

GROSS AREA: ± 28.65 ACRES
 NET AREA: ± 27.41 ACRES (EXCLUDES ARTERIAL & COLLECTOR R/W)

LOT SIZE: 50' x 115'
 TOTAL LOTS: 111

GROSS DENSITY: ± 3.9 DU/AC

OPEN SPACE TRACT AREA: ± 7.17 ACRES (26% OF NET)
 USEABLE OPEN SPACE AREA: ± 5.88 ACRES (82% OF TOTAL OPEN SPACE AREA)

PLANT LEGEND

SYMBOL	SCIENTIFIC NAME	COMMON NAME	SIZE
TREES			
	Acacia aneura	Mulga	24" Box
	Acacia salicina	Willow Acacia	24" Box
	Caesalpinia cacalaco 'Smoothie'	Thornless Cascalote	24" Box
	Chitalpa tashkentensis 'Pink Dawn'	Chitalpa	24" Box
	Ebenopsis ebano	Texas Ebony	24" Box
	Eucalyptus Papuana	Ghost Gum	20' Matched
	Fraxinus velutina 'Fan West'	Fan West Ash	24" Box
	Olea europaea 'Swan Hill'	'Swan Hill' Olive	24" Box
	Olneya tesota	Ironwood	24" Box
	Parkinsonia x 'Sonoran Emerald'	Sonoran Emerald Palo Verde	24" Box
	Phoenix dactylifera	Date Palm	20' Matched
	Pinus edlarica	Mondel Pine	24" Box
	Pistacia X 'Red Push'	Red Push Pistacia	24" Box
	Prosopis hybrid 'Phoenix'	Thornless Mesquite	24" Box
	Quercus virginiana	Live Oak	24" Box
	Ulmus parvifolia	Chinese Evergreen Elm	24" Box

SHRUBS/ACCENTS

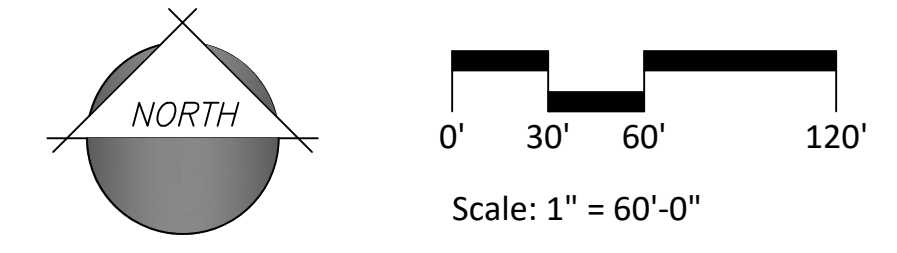
SYMBOL	SCIENTIFIC NAME	COMMON NAME	SIZE
	Aloe hybrid 'Blue Elf'	Blue Elf Aloe	5 Gal
	Agave americana	Century Plant	5 Gal
	Baccharis hybrid 'Starn'	Thompson Baccharis	5 Gal
	Bougainvillea 'La Jolla'	'La Jolla' Bougainvillea	5 Gal
	Caesalpinia pulcherrima	Red Bird of Paradise	5 Gal
	Calliandra californica	Baja Fairy Duster	5 Gal
	Callistemon viminalis 'Little John'	Little John	5 Gal
	Dalea capitata 'Sierra Gold'	Sierra Gold Dalea	1 Gal
	Dasyliion wheeleri	Desert Spoon	5 Gal
	Encella farinosa	Brittlebush	5 Gal
	Eremophila glabra ssp. Carnosa 'Winter Blaze'	'Winter Blaze' Emu Bush	5 Gal
	Eremophila macuata 'Valentine'	'Valentine' Emu Bush	5 Gal
	Eremophila hygrophana 'Blue Bells'	Blue Bells	5 Gal
	Glandularia rigida	Sandpaper Verbena	5 Gal
	Gossypium harknessii	San Marcos Hibiscus	5 Gal
	Hesperaloe funifera	Giant Hesperaloe	1 Gal
	Hesperaloe parviflora 'Brakelights'	Brakelights Red Yucca	1 Gal
	Justicia californica	Chuparosa	1 Gal
	Lantana x 'Dallas Red'	Dallas Red Lantana	5 Gal
	Leucophyllum langmaniae 'Rio Bravo'	Rio Bravo Sage	5 Gal
	Leucophyllum candidum 'Thunder Cloud'	Thunder Cloud Sage	5 Gal
	Muhlenbergia capillaris 'Regal Mist'	'Regal Mist' Muhly	5 Gal
	Muhlenbergia lindheimeri 'Autumn Glow'	'Autumn Glow' Muhly	5 Gal
	Muhlenbergia rigens	Deer Grass	5 Gal
	Myrtus communis 'Compacta'	Dwarf Myrtle	5 Gal
	Nerium oleander 'Petite Pink'	Dwarf Pink Oleander	5 Gal
	Ruellia brittoniana	Purple Ruellia	5 Gal
	Ruellia peninsularis	Desert Ruellia	5 Gal
	Russelia equisetiformis	Coral Fountain	5 Gal
	Salvia greggii	Autumn sage	5 Gal
	Senna nemophila	Desert Cassia	5 Gal
	Simmondsia chinensis	Jojoba	5 Gal
	Simmondsia chinensis 'Vista'	Compact Jojoba	5 Gal
	Tecoma x 'Sunrise'	Sunrise Esperanza	5 Gal

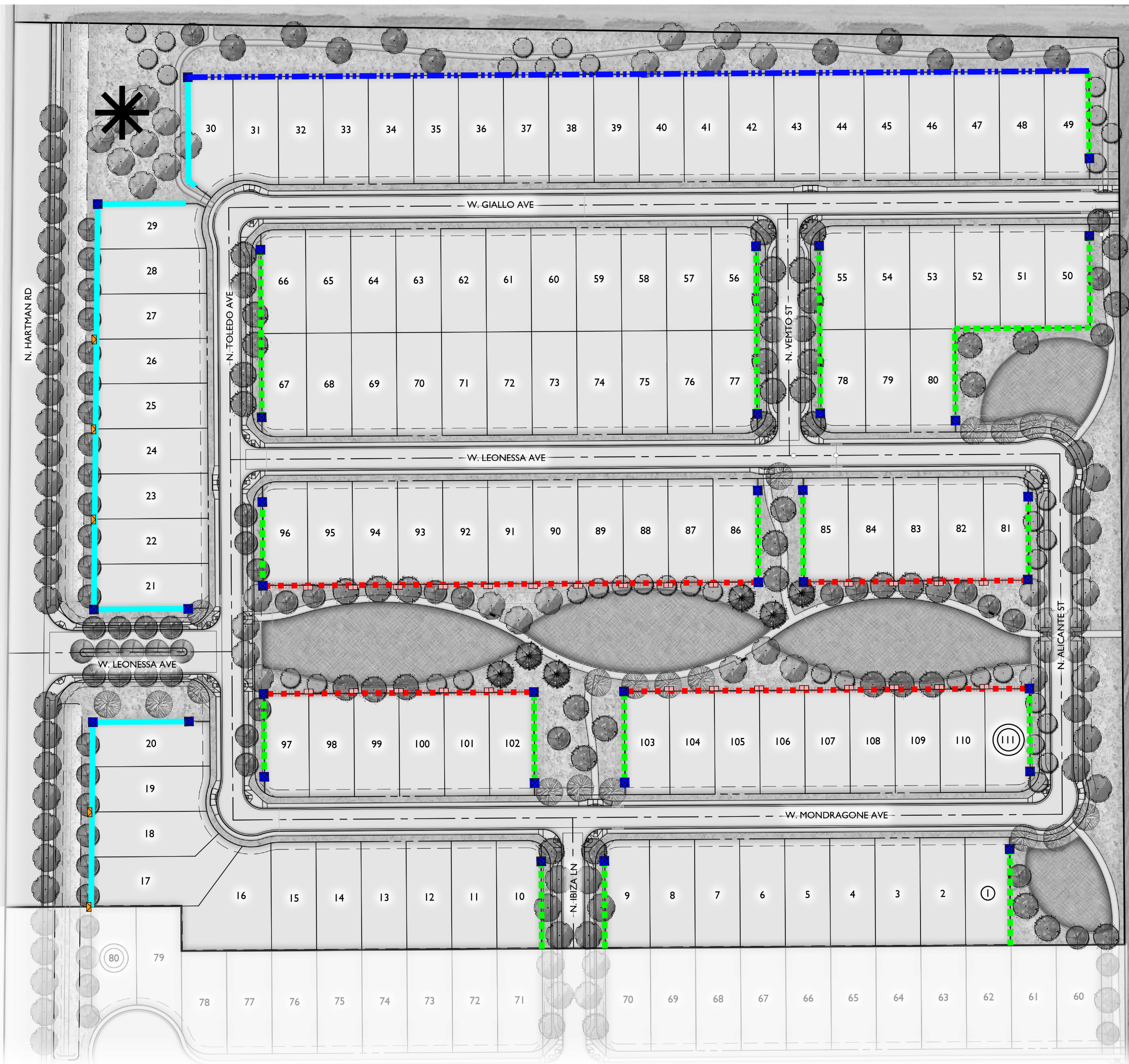
GROUNDCOVERS

SYMBOL	SCIENTIFIC NAME	COMMON NAME	SIZE
	Acacia redolens Desert Carpet	Prostrate Acacia	1 Gal
	Dalea greggii	Trailing Indigo Bush	1 Gal
	Convolvulus cneorum	Bush Morning Glory	1 Gal
	Lantana montevidensis	Trailing Purple Lantana	1 Gal
	Lantana x 'New Gold'	New Gold Lantana	1 Gal
	Rosmarinus officinalis 'Huntington Carpet'	Trailing Rosemary	1 Gal
	Sphagnetocola trilobata	Yellow Dot	1 Gal

TURF & INERT MATERIALS

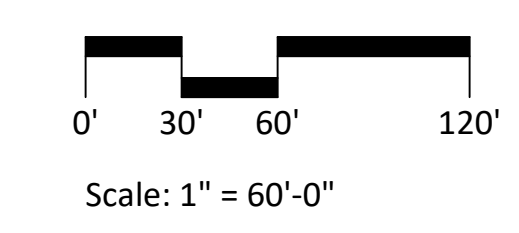
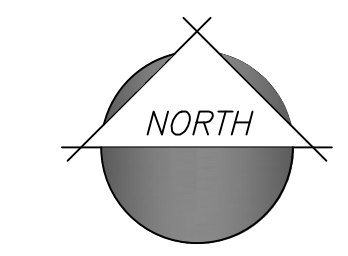
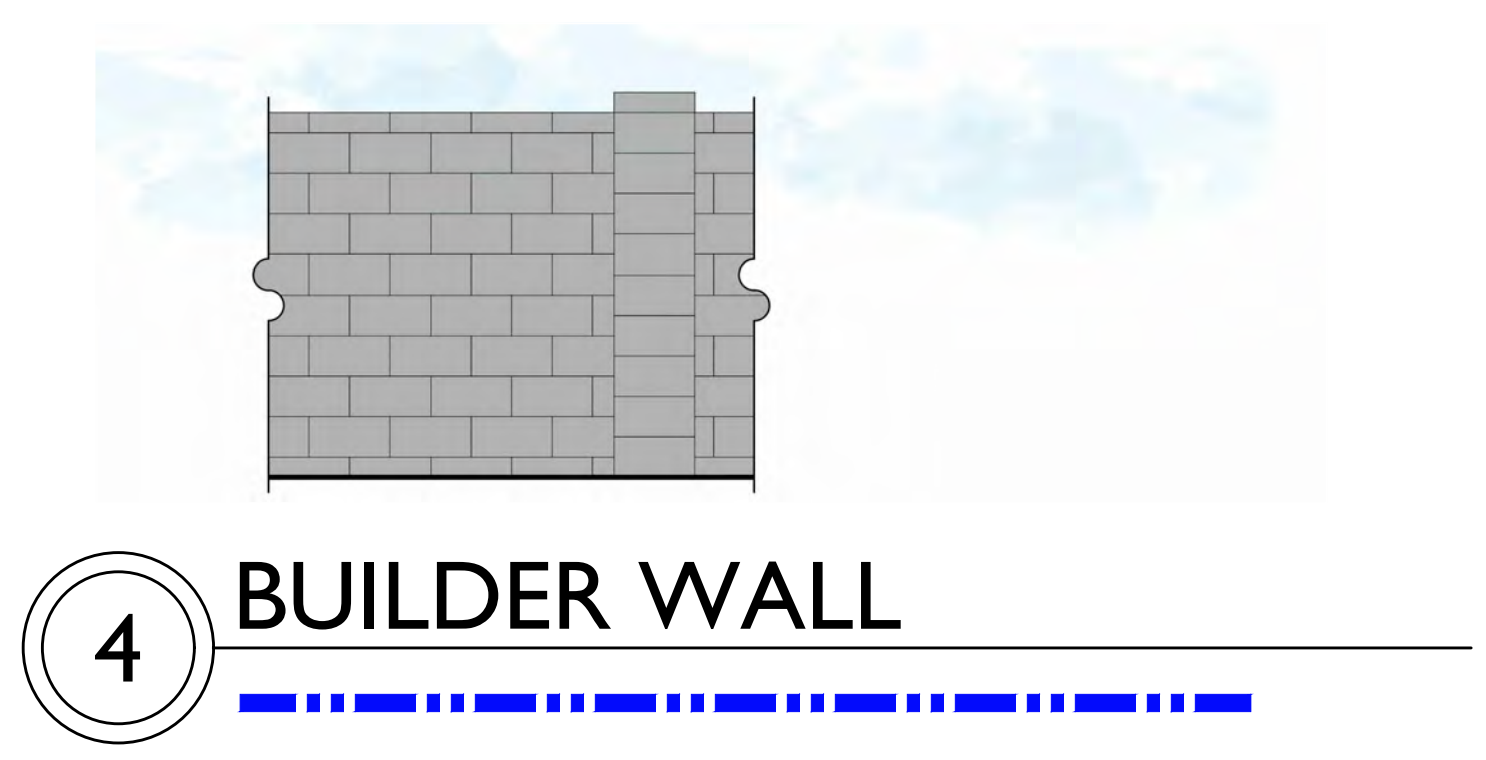
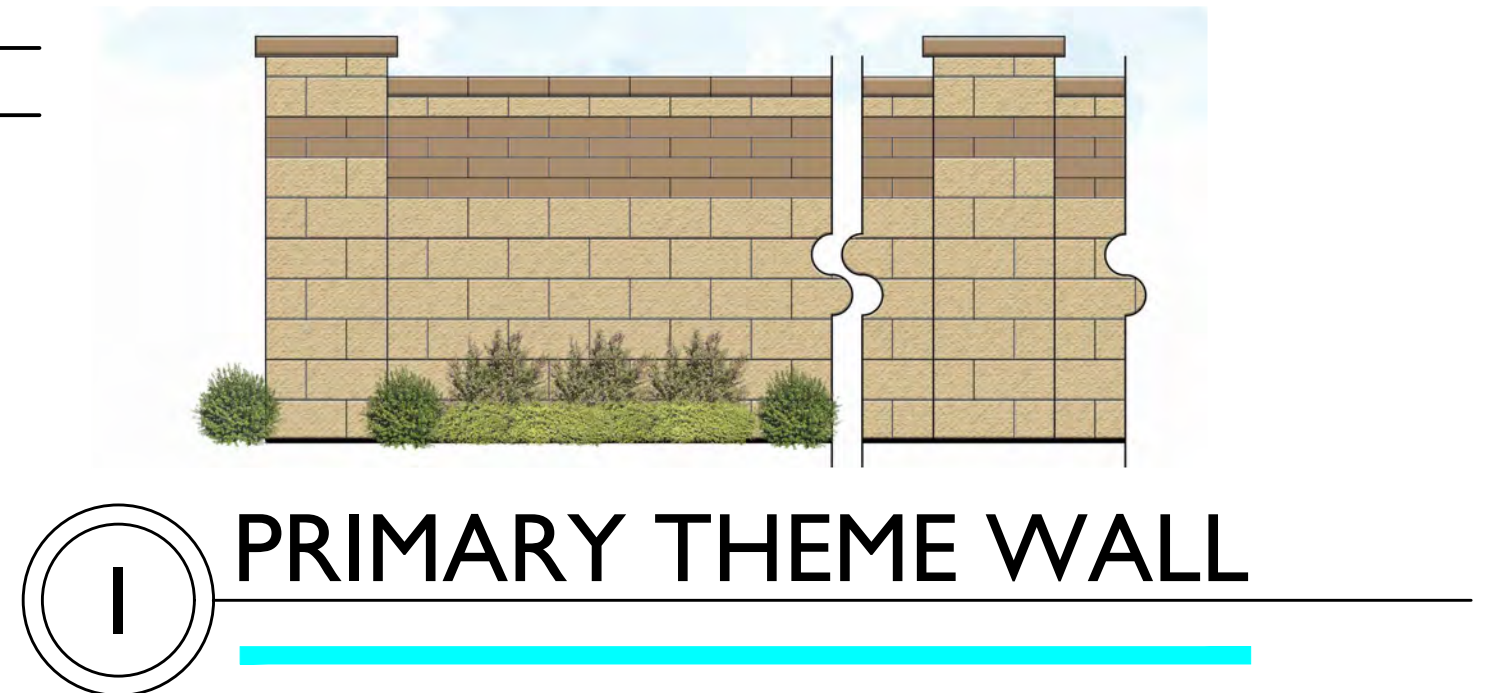
	Hybrid Bermuda Sod	Midiron	Hydressed
	3/4" Screened Decomposed Granite	Apache Brown or Equal, 2" Depth Min.	





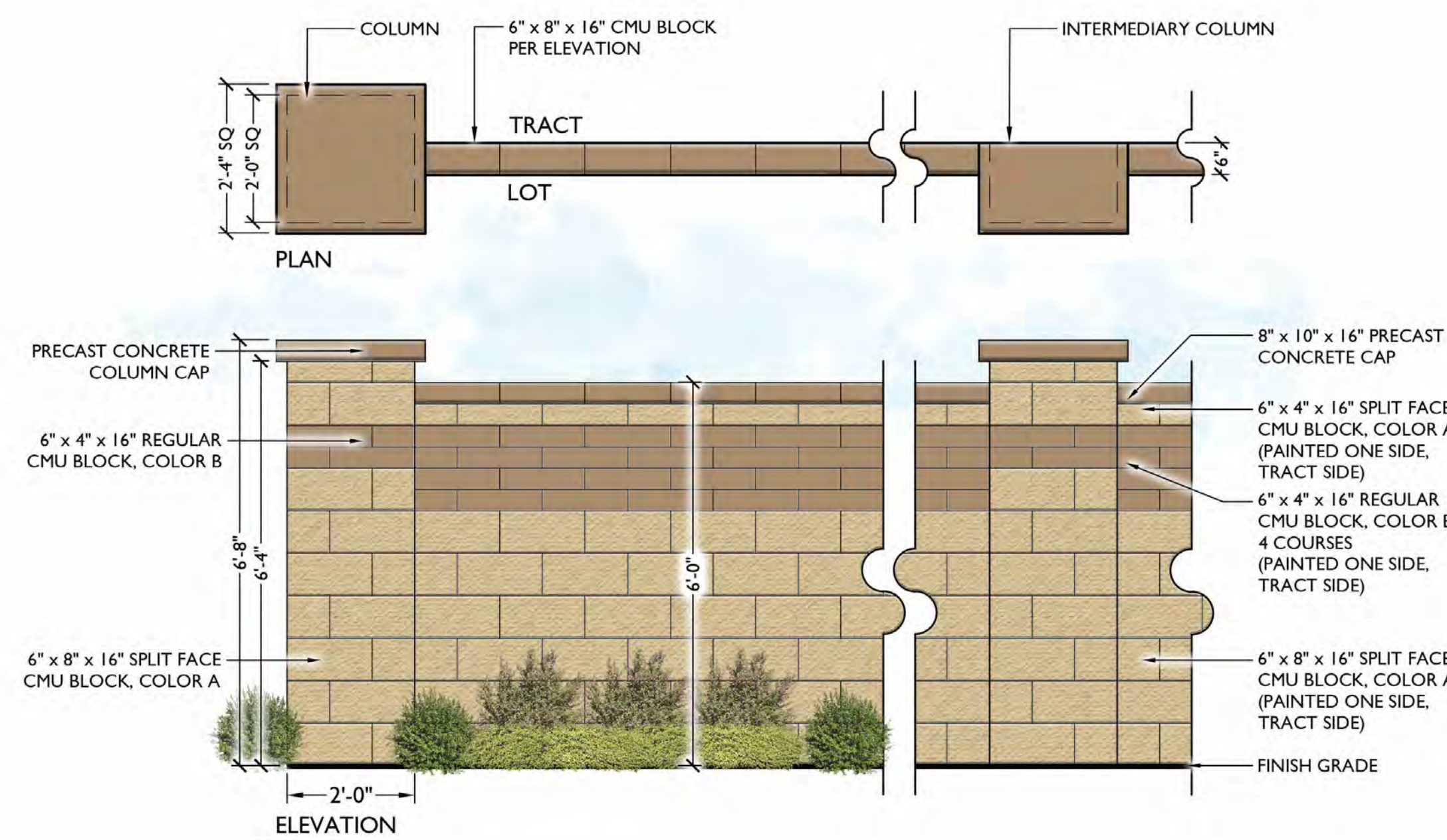
WALLS LEGEND

SYMBOL	ITEM
	DECORATIVE COLUMN
	PRIMARY WALL INTERMEDIATE COLUMN
	PARTIAL VIEW WALL INTERMEDIATE COLUMN
	PRIMARY THEME WALL
	SECONDARY THEME WALL
	PARTIAL VIEW WALL
	BUILDER WALL
	CORNER MONUMENT

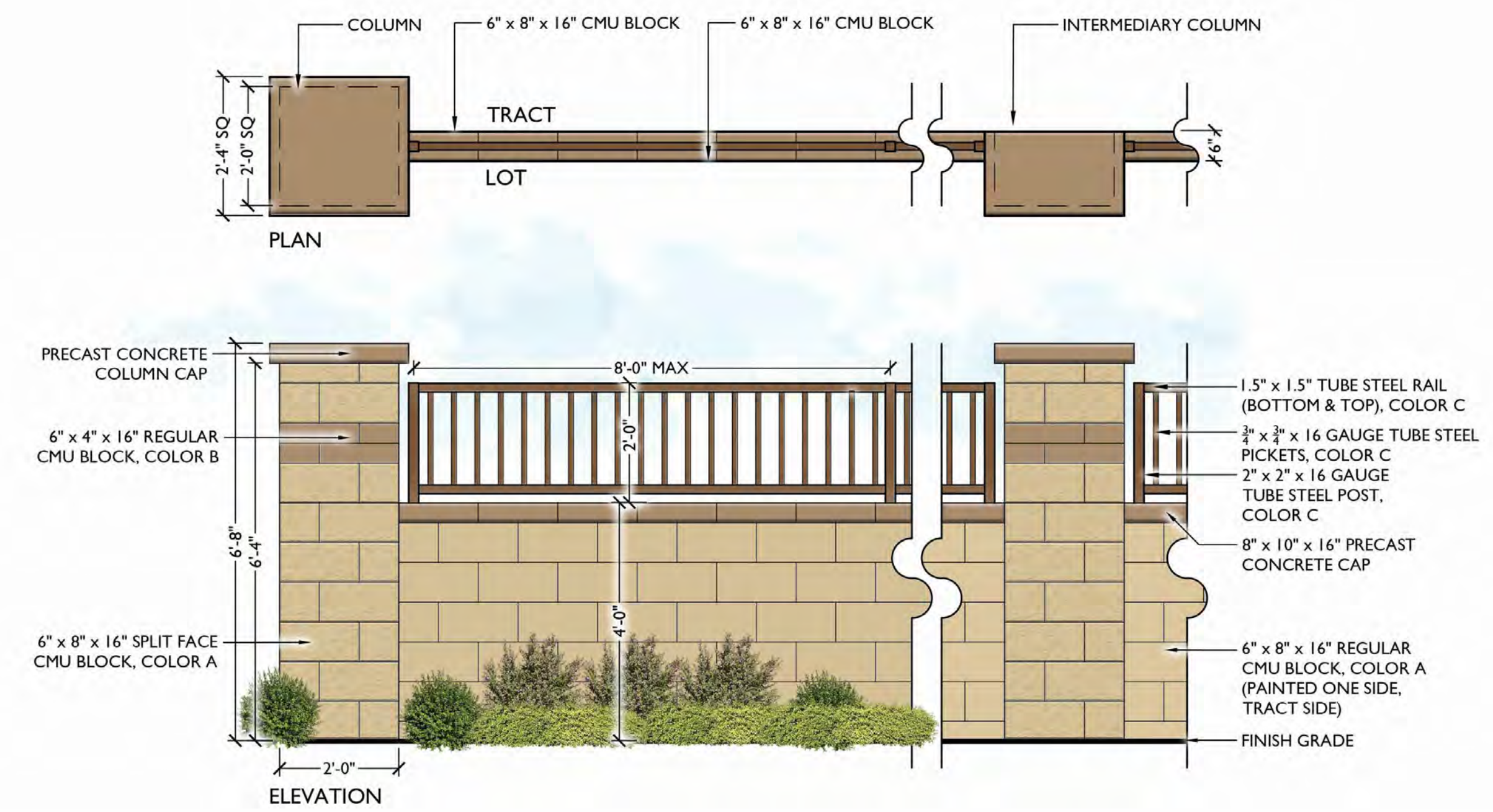


COLOR & MATERIALS SCHEDULE

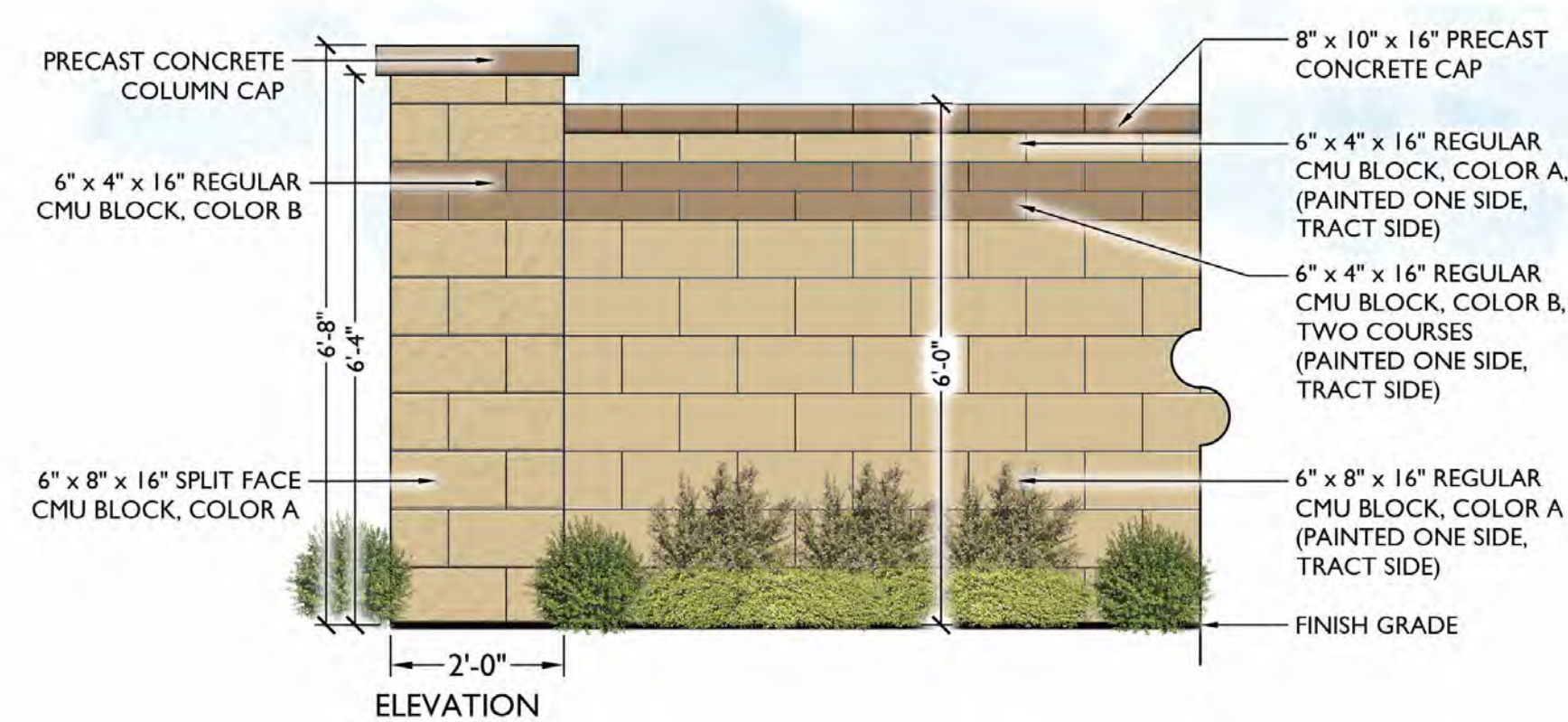
ITEM	COLOR & MANUFACTURER
COLOR A (CMU)	COLOR: GRAIN MILL DET665 BY DUNN EDWARDS OAE
COLOR B (CMU)	COLOR: WITH THE GRAIN DET668 BY DUNN EDWARDS OAE
COLOR C (STEEL)	POWDER COATED RAL 1036
STONE VENEER	3" SPLIT LIMESTONE - GENOA SANDS, BY CORONADO STONE, OAE
WALL PRECAST CONCRETE CAP	M-8-24 NO RADIUS WALL CAP, COLOR: MOCHA CAMEL BY MESA PRECAST OAE
COLUMN PRECAST CONCRETE FLAT CAP	FC-24-4 COLUMN CAP, COLOR: MOCHA CAMEL BY MESA PRECAST OAE



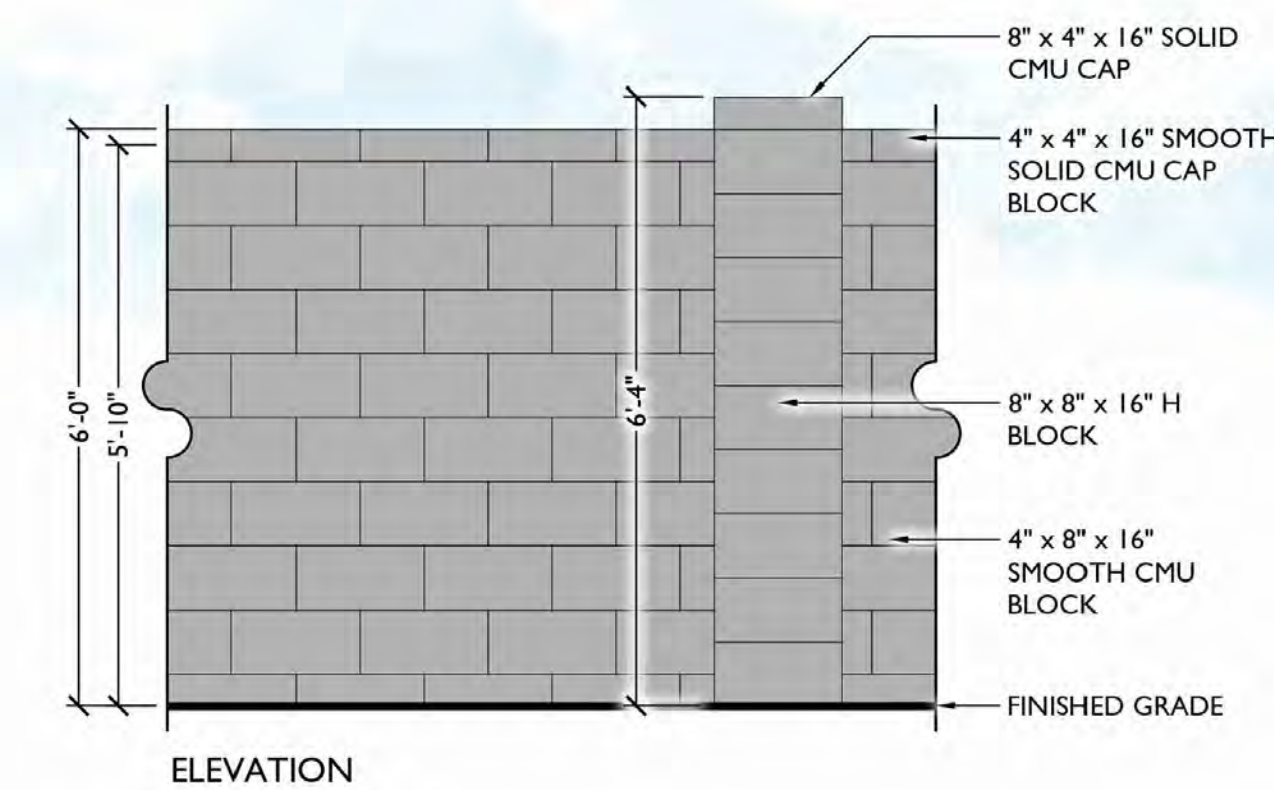
1 PRIMARY THEME WALL
SCALE: 1/2" = 1'-0"



3 PARTIAL VIEW WALL
SCALE: 1/2" = 1'-0"



2 SECONDARY THEME WALL
SCALE: 1/2" = 1'-0"



4 BUILDER WALL
SCALE: 1/2" = 1'-0"

KEYNOTES

- ① ENTRY MONUMENT
- ② STABILIZED DG
- ③ FUTURE CHANNEL

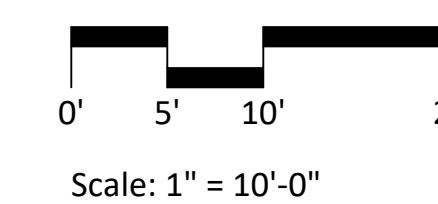
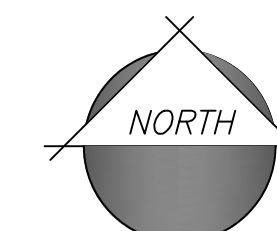
PLANT LEGEND

SYMBOL	SCIENTIFIC NAME	COMMON NAME	SIZE
TREES			
	<i>Acacia aneura</i>	Mulga	24" Box
	<i>Acacia salicina</i>	Willow Acacia	24" Box
	<i>Caesalpinia cacalaco</i> 'Smoothie'	Thornless Cascalote	24" Box
	<i>Chitalpa tashkentensis</i> 'Pink Dawn'	Chitalpa	24" Box
	<i>Ebenopsis ebano</i>	Texas Ebony	24" Box
	<i>Eucalyptus Papuana</i>	Ghost Gum	20' Matched
	<i>Fraxinus velutina</i> 'Fan West'	Fan West Ash	24" Box
	<i>Olea europaea</i> 'Swan Hill'	'Swan Hill' Olive	24" Box
	<i>Olneya tesota</i>	Ironwood	24" Box
	<i>Parkinsonia x 'Sonoran Emerald'</i>	Sonoran Emerald Palo Verde	24" Box
	<i>Phoenix dactylifera</i>	Date Palm	20' Matched
	<i>Pinus eldarica</i>	Mondel Pine	24" Box
	<i>Pistacia X 'Red Push'</i>	Red Push Pistacia	24" Box
	<i>Prosopis hybrid 'Phoenix'</i>	Thornless Mesquite	24" Box
	<i>Quercus virginiana</i>	Live Oak	24" Box
	<i>Ulmus parvifolia</i>	Chinese Evergreen Elm	24" Box

SYMBOL	SCIENTIFIC NAME	COMMON NAME	SIZE
SHRUBS/ACCENTS			
	<i>Aloe hybrid 'Blue Elf'</i>	Blue Elf Aloe	5 Gal
	<i>Agave americana</i>	Century Plant	5 Gal
	<i>Baccharis hybrid 'Starn'</i>	Thompson Baccharis	5 Gal
	<i>Bougainvillea 'La Jolla'</i>	'La Jolla' Bougainvillea	5 Gal
	<i>Caesalpinia pulcherrima</i>	Red Bird of Paradise	5 Gal
	<i>Calliandra californica</i>	Baja Fairy Duster	5 Gal
	<i>Callistemon viminalis</i> 'Little John'	Little John	5 Gal
	<i>Dalea capitata</i> 'Sierra Gold'	Sierra Gold Dalea	1 Gal
	<i>Dasylirion wheeleri</i>	Desert Spoon	5 Gal
	<i>Encelia farinosa</i>	Brittlebush	5 Gal
	<i>Eremophila glabra</i> ssp. <i>Carnosa</i> 'Winter Blaze'	'Winter Blaze' Emu Bush	5 Gal
	<i>Eremophila maculata</i> 'Valentine'	'Valentine' Emu Bush	5 Gal
	<i>Eremophila hygrophana</i> 'Blue Bells'	Blue Bells	5 Gal
	<i>Glandularia rigida</i>	Sandpaper Verbena	5 Gal
	<i>Gossypium harknessii</i>	San Marcos Hibiscus	5 Gal
	<i>Hesperaloe funifera</i>	Giant Hesperaloe	1 Gal
	<i>Hesperaloe parviflora</i> 'Brakelights'	Brakelights Red Yucca	1 Gal
	<i>Justicia californica</i>	Chuparosa	1 Gal
	<i>Lantana x 'Dallas Red'</i>	Dallas Red Lantana	5 Gal
	<i>Leucophyllum langmaniae</i> 'Rio Bravo'	Rio Bravo Sage	5 Gal
	<i>Leucophyllum candidum</i> 'Thunder Cloud'	Thunder Cloud Sage	5 Gal
	<i>Muhlenbergia capillaris</i> 'Regal Mist'	'Regal Mist' Muhly	5 Gal
	<i>Muhlenbergia lindheimeri</i> 'Autumn Glow'	'Autumn Glow' Muhly	5 Gal
	<i>Muhlenbergia rigens</i>	Deer Grass	5 Gal
	<i>Myrtus communis</i> 'Compacta'	Dwarf Myrtle	5 Gal
	<i>Nerium oleander</i> 'Petite Pink'	Dwarf Pink Oleander	5 Gal
	<i>Ruellia brittoniana</i>	Purple Ruellia	5 Gal
	<i>Ruellia pensularis</i>	Desert Ruellia	5 Gal
	<i>Russelia equisetiformis</i>	Coral Fountain	5 Gal
	<i>Salvia greggii</i>	Autumn sage	5 Gal
	<i>Senna nemophila</i>	Desert Cassia	5 Gal
	<i>Simmondsia chinensis</i>	Jojoba	5 Gal
	<i>Simmondsia chinensis</i> 'Vista'	Compact Jojoba	5 Gal
	<i>Tecoma x 'Sunrise'</i>	Sunrise Esperanza	5 Gal

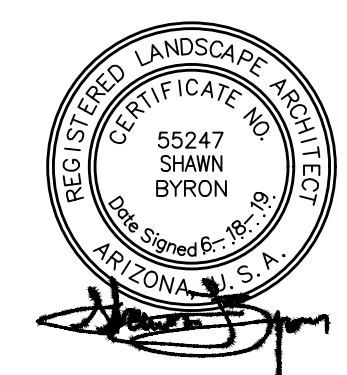
SYMBOL	SCIENTIFIC NAME	COMMON NAME	SIZE
GROUNDCOVERS			
	<i>Acacia redolens</i> Desert Carpet	Prostrate Acacia	1 Gal
	<i>Dalea greggii</i>	Trailing Indigo Bush	1 Gal
	<i>Convolvulus cneorum</i>	Bush Morning Glory	1 Gal
	<i>Lantana montevidensis</i>	Trailing Purple Lantana	1 Gal
	<i>Lantana x 'New Gold'</i>	New Gold Lantana	1 Gal
	<i>Rosmarinus officianalis</i> 'Huntington Carpet'	Trailing Rosemary	1 Gal
	<i>Sphagneticola trilobata</i>	Yellow Dot	1 Gal

TURF & INERT MATERIALS
 3/4" Screened Decomposed Granite
 Apache Brown or Equal, 2" Depth Min.



1 MAIN ENTRY ENLARGEMENT

SCALE: 1" = 10'-0"



COLOR & MATERIALS SCHEDULE

ITEM	COLOR & MANUFACTURER
COLOR A (CMU)	COLOR: GRAIN MILL DET665 BY DUNN EDWARDS OAE
COLOR B (CMU)	COLOR: WITH THE GRAIN DET668 BY DUNN EDWARDS OAE
COLOR C (STEEL)	POWDER COATED RAL 1036
STONE VENEER	3" SPLIT LIMESTONE - GENOA SANDS, BY CORONADO STONE, OAE.
WALL PRECAST CONCRETE CAP	M-8-24 NO RADIUS WALL CAP, COLOR: MOCHA CAMEL BY MESA PRECAST OAE.
COLUMN PRECAST CONCRETE FLAT CAP	FC-24-4 COLUMN CAP, COLOR: MOCHA CAMEL BY MESA PRECAST OAE.



I ENTRY MONUMENT
SCALE: 1/2" = 1'-0"